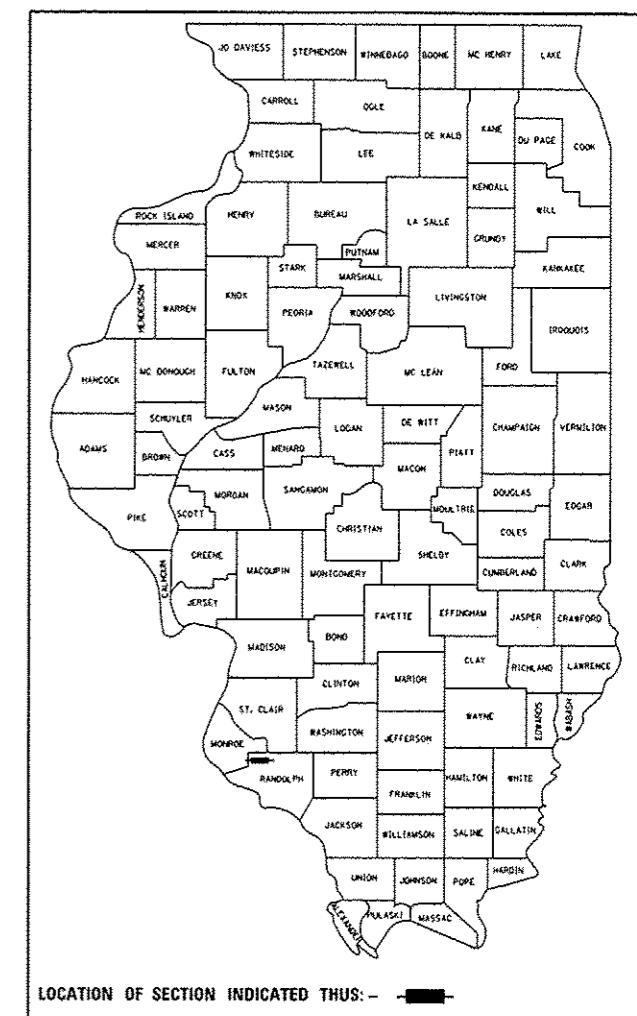


F.A. RTE.	SECTION	COUNTY	TOTAL SHEETS	SHEET NO.
329	125-1	RANDOLPH	20	1
		ILLINOIS	CONTRACT NO. 76G70	

D-98-069-13



LOCATION OF SECTION INDICATED THUS: -

FUNCTIONAL CLASSIFICATION:	OTHER ARTERIAL
2014 ADT:	4300
MU%	7.1%
SU%	3.5%

STATE OF ILLINOIS
DEPARTMENT OF TRANSPORTATION
DIVISION OF HIGHWAYS

**PROPOSED
HIGHWAY PLANS**

FAP ROUTE 329 (IL 154)
SECTION 125-1

PROJECT ACHSIP-0329(015)
RESURFACING AND WIDENING FOR
LEFT TURN LANES AT PRAIRIE RD.
RANDOLPH COUNTY

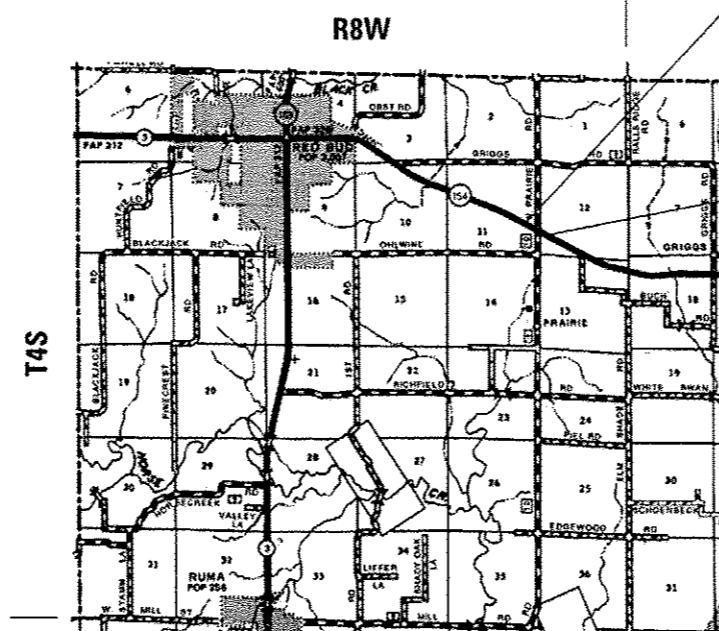
C-98-071-13

INDEX OF SHEETS

1. COVER SHEET
2. GENERAL NOTES
3. SUMMARY OF QUANTITIES
4. TYPICAL SECTIONS
5. SCHEDULE OF QUANTITIES
6. HORIZONTAL ALIGNMENT/SURVEY TIES
- 7-8. REMOVAL PLANS
- 9-11. PLAN AND PROFILE SHEETS
- 12-13. EROSION CONTROL PLANS
- 14-15. PAVEMENT MARKING PLANS
16. MISCELLANEOUS DETAILS
- 17-20. CROSS SECTIONS

HIGHWAY STANDARDS

- | | |
|-----------|---|
| 000001-06 | STANDARD SYMBOLS, ABBREVIATIONS AND PATTERNS |
| 280001-07 | TEMPORARY EROSION CONTROL SYSTEMS |
| 482001-02 | HMA SHOULDER ADJACENT TO FLEXIBLE PAVEMENT |
| 482011-03 | HMA SHLD. STRIPS/SHLDS. WITH RESURFACING OR WIDENING AND RESURFACING PROJECTS |
| 642006 | SHOULDER RUMBLE STRIPS, 8 IN. |
| 701001-02 | OFF-RD OPERATIONS, 2L, 2W, MORE THAN 15' AWAY |
| 701006-05 | OFF-RD OPERATIONS, 2L, 2W, 15' TO 24" FROM PAV. EDGE |
| 701011-04 | OFF-RD MOVING OPERATIONS, 2L, 2W, DAY ONLY |
| 701201-04 | LANE CLOSURE, 2L, 2W, DAY ONLY, FOR SPEEDS > 45 MPH |
| 701301-04 | LANE CLOSURE, 2L, 2W, SHORT TIME OPERATIONS |
| 701306-03 | LANE CLOSURE, 2L, 2W, SLOW MOVING OPERATIONS, DAY ONLY, FOR SPEEDS > 45 MPH |
| 701311-03 | LANE CLOSURE, 2L, 2W MOVING OPERATIONS, DAY ONLY |
| 701326-04 | LANE CLOSURE, 2L, 2W, PAVEMENT WIDENING, FOR SPEEDS > 45 MPH |
| 701336-06 | LANE CLOSURE, 2L, 2W, WORK AREAS IN SERIES, FOR SPEEDS > 45 MPH |
| 701901-03 | TRAFFIC CONTROL DEVICES |
| 720001-01 | SIGN PANEL MOUNTING DETAILS |
| 720006-04 | SIGN PANEL ERECTION DETAILS |
| 728001-01 | TELESCOPING STEEL SIGN SUPPORT |
| 780001-04 | TYPICAL PAVEMENT MARKINGS |
| 781001-03 | TYPICAL APPLICATIONS RAISED REFLECTIVE PAVEMENT MARKERS |

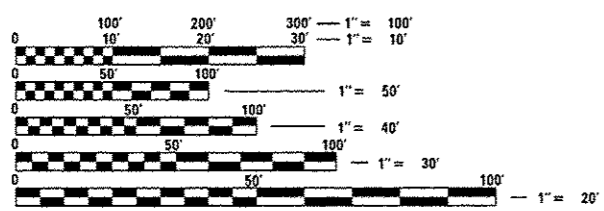


LOCATION MAP

SCALE: 1" = 1 MILE

BEGIN PROJECT
STA. 152 + 62.00
LAT: 38.1981
LONG: 89.9451

END PROJECT
STA. 165 + 59.00
LAT: 38.1965
LONG: 89.9411



FULL SIZE PLANS HAVE BEEN PREPARED USING STANDARD ENGINEERING SCALES. REDUCED SIZED PLANS WILL NOT CONFORM TO STANDARD SCALES. IN MAKING MEASUREMENTS ON REDUCED PLANS, THE ABOVE SCALES MAY BE USED.

J.U.L.I.E.
JOINT UTILITY LOCATION INFORMATION FOR EXCAVATION
1-800-892-0123
OR 811

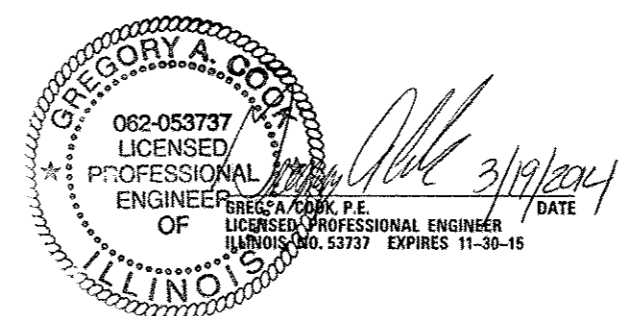
PROJECT ENGINEER:
TIM PADGETT, (618) 346-3325

PROJECT MANAGER:
PHIL COPPERNOLL, (618) 346-3480

CONTRACT NO. 76G70



GROSS LENGTH = 1,297 FT. = 0.246 MILE
NET LENGTH = 1,297 FT. = 0.246 MILE



STATE OF ILLINOIS
DEPARTMENT OF TRANSPORTATION
DIVISION OF HIGHWAYS

SUBMITTED March 21 2014
Jeffrey Z. K...
DEPUTY DIRECTOR OF HIGHWAYS, REGION ENGINEER

May 9 2014
John D. Baranzelli, P.E.
ENGINEER OF DESIGN AND ENVIRONMENT

May 9 2014
Omer Osman, P.E.
DIRECTOR OF HIGHWAYS, CHIEF ENGINEER

**PRINTED BY THE AUTHORITY
OF THE STATE OF ILLINOIS**

I:\Bentley\781\Print\Printer\LDOT\LDOT_printer_bw.pltcfq
3/19/2014 12:00:31 PM \\chprint\CHKM452
X:\CH116\2011\11004-18\CAD\Plans\0875g70-sht-cover.dgn