

DEPARTMENT OF TRANSPORTATION
DIVISION OF HIGHWAYS

**PROPOSED
HIGHWAY PLANS**

FAP ROUTE 329 (IL 154)
SECTION 125-1

PROJECT ACHSIP-0329(015)
RESURFACING AND WIDENING FOR
LEFT TURN LANES AT PRAIRIE RD.
RANDOLPH COUNTY

C-98-071-13

F.A. RTE.	SECTION	COUNTY	TOTAL SHEETS	SHEET NO.
329	125-1	RANDOLPH	20	1
		ILLINOIS	CONTRACT NO. 76G70	

D-98-069-13



FUNCTIONAL CLASSIFICATION:	OTHER ARTERIAL
2014 ADT:	4300
MU%	7.1%
SU%	3.5%

INDEX OF SHEETS

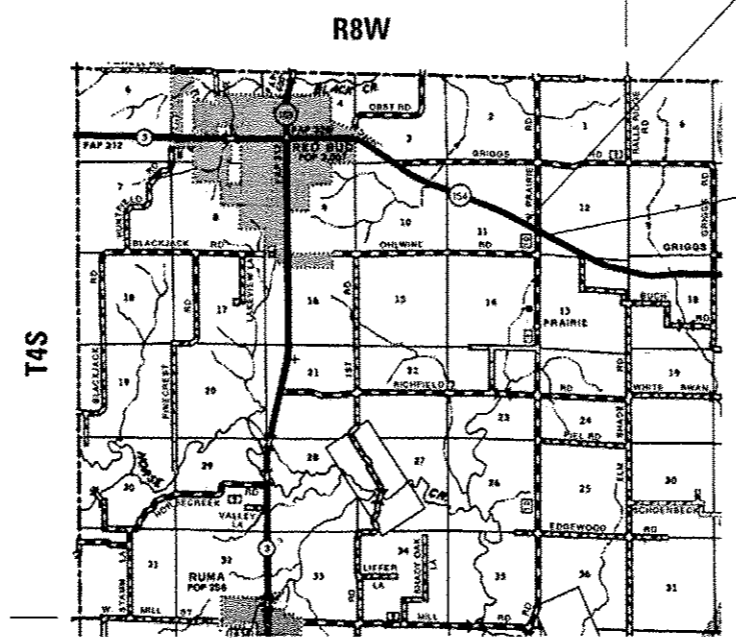
- 1. COVER SHEET
- 2. GENERAL NOTES
- 3. SUMMARY OF QUANTITIES
- 4. TYPICAL SECTIONS
- 5. SCHEDULE OF QUANTITIES
- 6. HORIZONTAL ALIGNMENT/SURVEY TIES
- 7-8. REMOVAL PLANS
- 9-11. PLAN AND PROFILE SHEETS
- 12-13. EROSION CONTROL PLANS
- 14-15. PAVEMENT MARKING PLANS
- 16. MISCELLANEOUS DETAILS
- 17-20. CROSS SECTIONS

HIGHWAY STANDARDS

- 000001-06 STANDARD SYMBOLS, ABBREVIATIONS AND PATTERNS
- 280001-07 TEMPORARY EROSION CONTROL SYSTEMS
- 482001-02 HMA SHOULDER ADJACENT TO FLEXIBLE PAVEMENT
- 482011-03 HMA SHLD. STRIPS/SHLDS. WITH RESURFACING OR WIDENING AND RESURFACING PROJECTS
- 642006 SHOULDER RUMBLE STRIPS, 8 IN.
- 701001-02 OFF-RD OPERATIONS, 2L, 2W, MORE THAN 15' AWAY
- 701006-05 OFF-RD OPERATIONS, 2L, 2W, 15' TO 24" FROM PAV. EDGE
- 701011-04 OFF-RD MOVING OPERATIONS, 2L, 2W, DAY ONLY
- 701201-04 LANE CLOSURE, 2L, 2W, DAY ONLY, FOR SPEEDS > 45 MPH
- 701301-04 LANE CLOSURE, 2L, 2W, SHORT TIME OPERATIONS
- 701306-03 LANE CLOSURE, 2L, 2W, SLOW MOVING OPERATIONS, DAY ONLY, FOR SPEEDS > 45 MPH
- 701311-03 LANE CLOSURE, 2L, 2W MOVING OPERATIONS, DAY ONLY
- 701326-04 LANE CLOSURE, 2L, 2W, PAVEMENT WIDENING, FOR SPEEDS > 45 MPH
- 701336-06 LANE CLOSURE, 2L, 2W, WORK AREAS IN SERIES, FOR SPEEDS > 45 MPH
- 701901-03 TRAFFIC CONTROL DEVICES
- 720001-01 SIGN PANEL MOUNTING DETAILS
- 720006-04 SIGN PANEL ERECTION DETAILS
- 728001-01 TELESCOPING STEEL SIGN SUPPORT
- 780001-04 TYPICAL PAVEMENT MARKINGS
- 781001-03 TYPICAL APPLICATIONS RAISED REFLECTIVE PAVEMENT MARKERS

BEGIN PROJECT
STA. 152 + 62.00
LAT: 38.1981
LONG: 89.9451

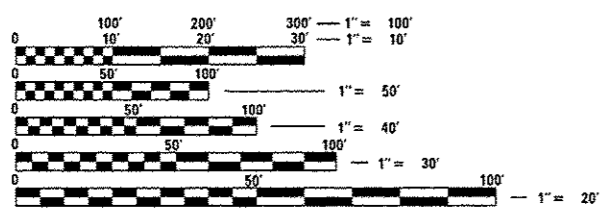
END PROJECT
STA. 165 + 59.00
LAT: 38.1965
LONG: 89.9411



LOCATION MAP

SCALE: 1" = 1 MILE

GROSS LENGTH = 1,297 FT. = 0.246 MILE
NET LENGTH = 1,297 FT. = 0.246 MILE



FULL SIZE PLANS HAVE BEEN PREPARED USING STANDARD ENGINEERING SCALES. REDUCED SIZED PLANS WILL NOT CONFORM TO STANDARD SCALES. IN MAKING MEASUREMENTS ON REDUCED PLANS, THE ABOVE SCALES MAY BE USED.

J.U.L.I.E.
JOINT UTILITY LOCATION INFORMATION FOR EXCAVATION
1-800-892-0123
OR 811

PROJECT ENGINEER:
TIM PADGETT, (618) 346-3325

PROJECT MANAGER:
PHIL COPPERNOLL, (618) 346-3480

CONTRACT NO. 76G70



STATE OF ILLINOIS
DEPARTMENT OF TRANSPORTATION
DIVISION OF HIGHWAYS

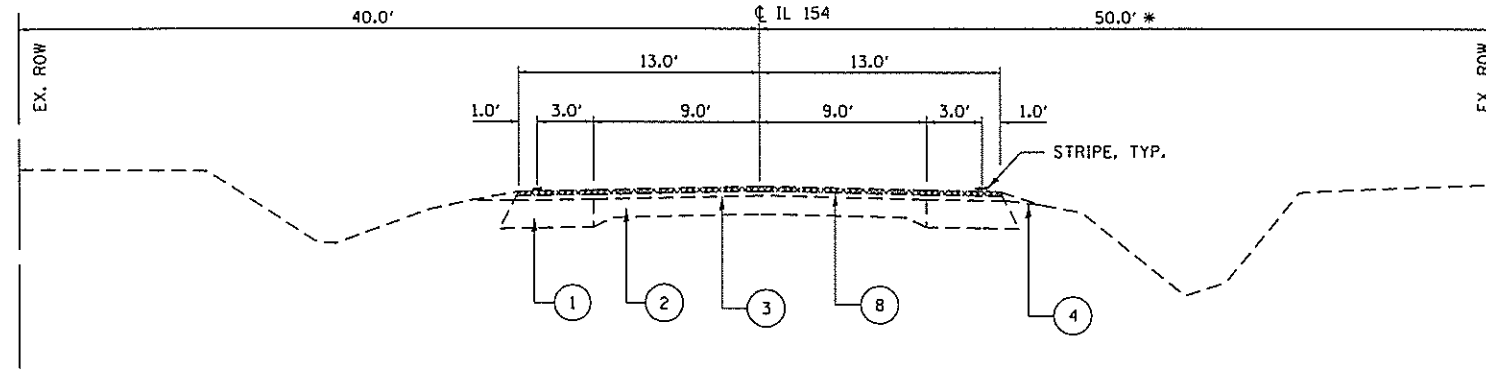
SUBMITTED March 21 2014
Jeffrey Z. K...
DEPUTY DIRECTOR OF HIGHWAYS, REGION ENGINEER

May 9 2014
John D. Baranzelli, P.E.
ENGINEER OF DESIGN AND ENVIRONMENT

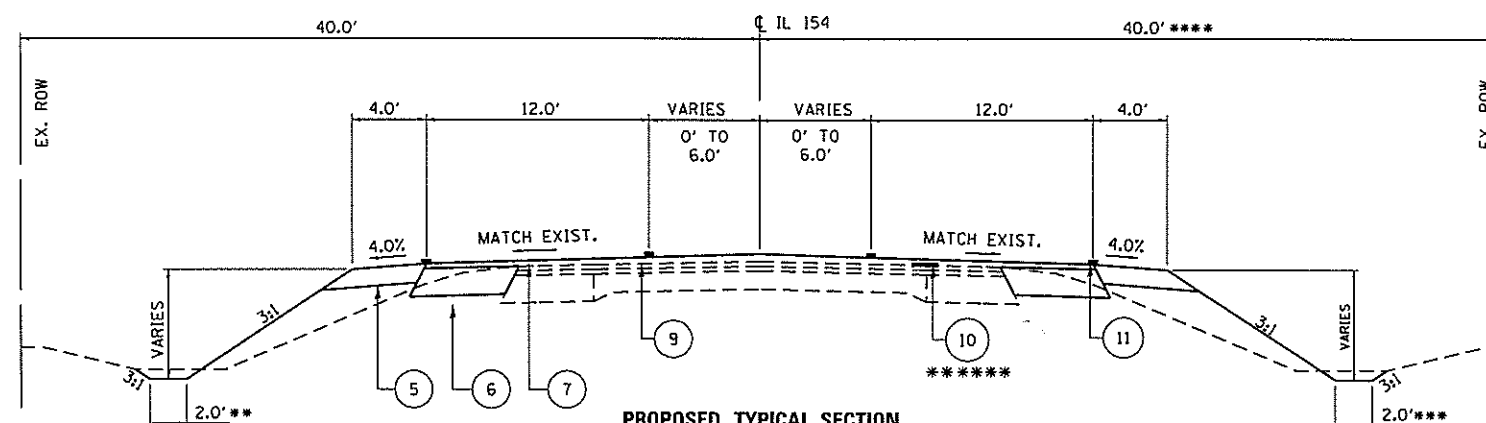
May 9 2014
Omer Osman, P.E.
DIRECTOR OF HIGHWAYS, CHIEF ENGINEER

**PRINTED BY THE AUTHORITY
OF THE STATE OF ILLINOIS**

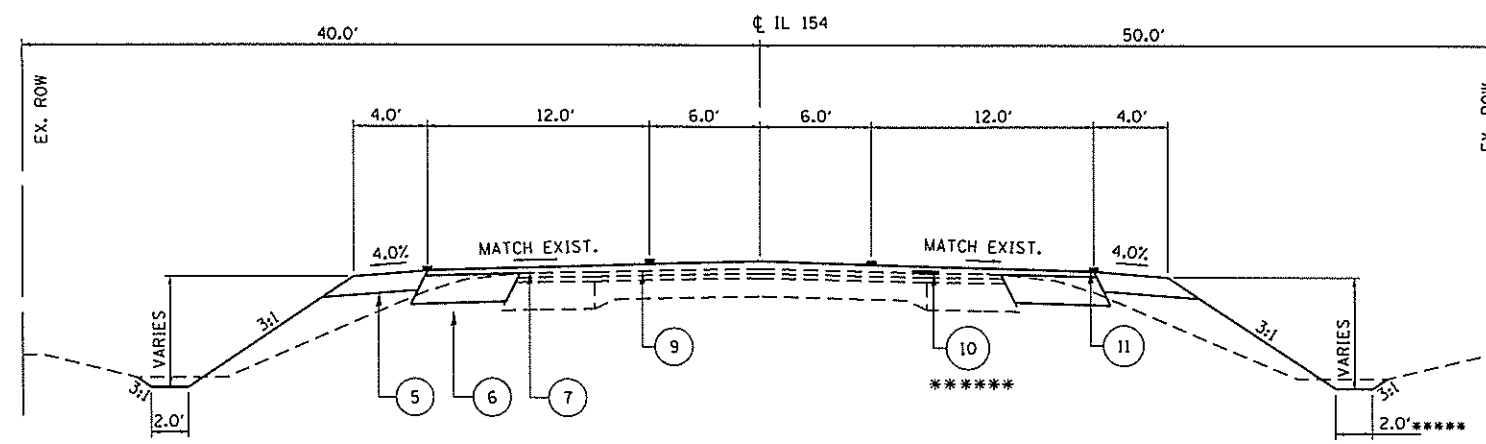
I:\Bentley\781\Print\Printer\LDOT\LDOT_printer_bw.pltcfq
3/19/2014 12:00:31 PM \\chprint\CHKMPC452
X:\CH116\2011\11004-18\CAD\Plans\0875g70-sht-cover.dgn



EXISTING TYPICAL SECTION
STA. 152+62.00 TO STA. 165+59.00



PROPOSED TYPICAL SECTION
STA. 152+62.00 TO STA. 155+62.00
STA. 162+59.00 TO STA. 165+59.00



PROPOSED TYPICAL SECTION
STA. 155+62.00 TO STA. 162+59.00

LEGEND

- ① EX. HMA BASE COURSE WIDENING, 9"
- ② EX. PCC PAVEMENT (9"-6"-9")
- ③ EX. HMA RESURFACING (3" AND VARIES)
- ④ EX. AGGREGATE SHOULDER
- ⑤ PROPOSED HMA SHOULDERS, 6"
- ⑥ PROPOSED HMA BASE COURSE WIDENING, 9"
- ⑦ PROPOSED HMA SURFACE COURSE, MIX "D", N70 2 1/2"
- ⑧ PROPOSED HMA SURFACE REMOVAL, 3/4"
- ⑨ PROPOSED BITUMINOUS MATERIAL (PRIME COAT)
- ⑩ PROPOSED STRIP REFLECTIVE CRACK CONTROL TREATMENT
- ⑪ PROPOSED THERMOPLASTIC PAVEMENT MARKING

- * 40.0' ROW FROM STA. 152+62.00 TO STA. 155+00.00
- ** DITCH WIDTH IS 4.0' FROM STA. 152+62.00 TO STA. 155+00.00
- DITCH WIDTH IS 4.0' TO 2.0' FROM STA. 155+00.00 TO STA. 155+50.00
- *** DITCH WIDTH VARIES FROM 4.0' TO 8.0' FROM STA. 152+62.00 TO STA. 153+50.00
- DITCH WIDTH IS 8.0' TO STA. 153+50.00 TO STA. 155+62.00
- **** ROW CHANGES TO 50.0' FROM STA. 155+00.00 TO STA. 165+59.00
- ***** DITCH WIDTH VARIES FROM 8.0' TO 2.0' FROM STA. 155+62.00 TO STA. 156+50.00
- ***** STRIP REFLECTIVE CRACK CONTROL TREATMENT BEGINS AT STA. 159+12.00

STRUCTURAL PAVEMENT DESIGN/INFORMATION

THE PAVEMENT WIDENING WAS DETERMINED BY THE POLICIES AS SET FORTH IN CHAPTER 54 OF THE BDE MANUAL. HMA BASE COURSE WAS SELECTED DUE TO THE PROPOSED WIDENING ADJACENT TO THE EXISTING HMA WIDENING ON IL 154.

DRIVER: I:\Bentley\Bentley\Projects\11001\11001.dwg
 FILE NAME: I:\Bentley\Bentley\Projects\11001\11001.dwg
 PLOT DATE: 3/19/2014



USER NAME = jdm1	DESIGNED - JGG	REVISED -
PRINTER =	DRAWN - MSJ	REVISED -
PLOT SCALE = 10.00' / 1"	CHECKED - MJB	REVISED -
PLOT DATE = 3/19/2014	DATE - 3-18-14	REVISED -

**STATE OF ILLINOIS
DEPARTMENT OF TRANSPORTATION**

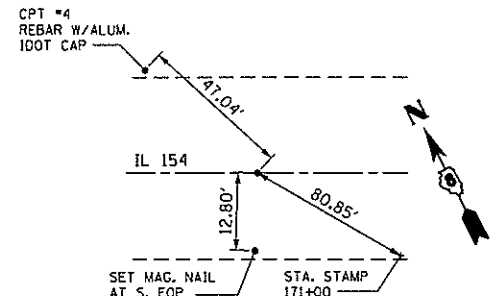
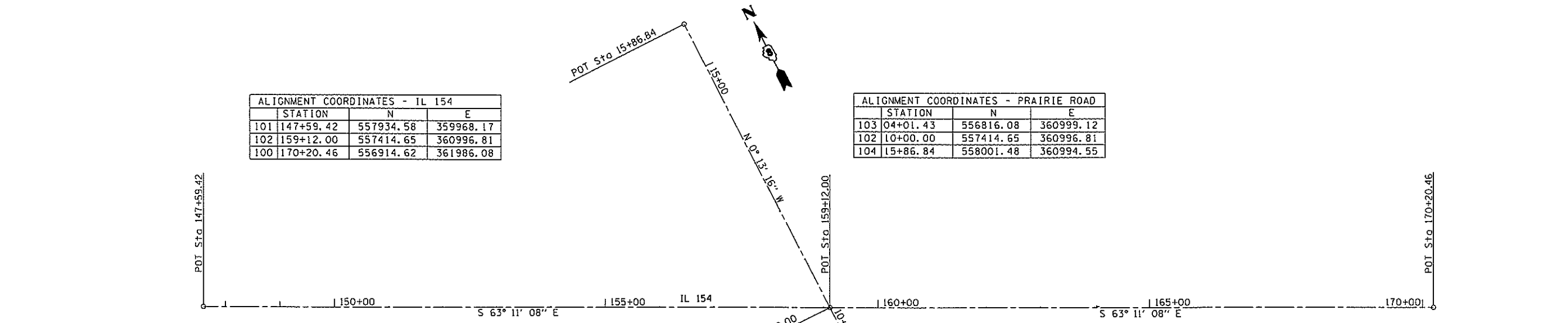
TYPICAL SECTIONS

SCALE: NTS SHEET NO. 1 OF 1 SHEETS STA. TO STA.

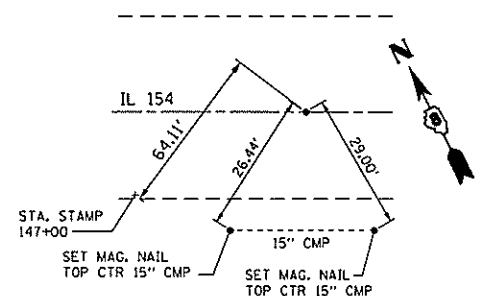
F.A.P. RTE.	SECTION	COUNTY	TOTAL SHEETS	SHEET NO.
329	125-1	RANDOLPH	20	4
CONTRACT NO. 76GTO				
ILLINOIS FED. AID PROJECT				

ALIGNMENT COORDINATES - IL 154			
STATION	N	E	
101	147+59.42	557934.58	359968.17
102	159+12.00	557414.65	360996.81
100	170+20.46	556914.62	361986.08

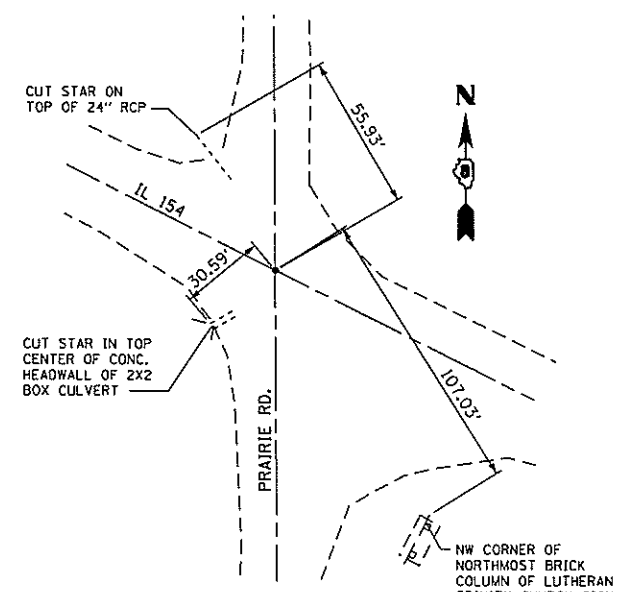
ALIGNMENT COORDINATES - PRAIRIE ROAD			
STATION	N	E	
103	04+01.43	556816.08	360999.12
102	10+00.00	557414.65	360996.81
104	15+86.84	558001.48	360994.55



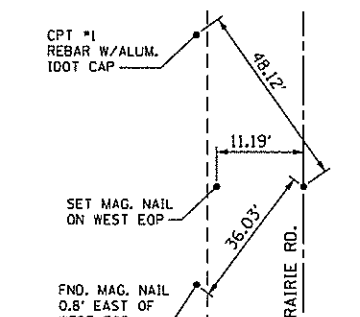
CONTROL POINT #100
 SET MAG. NAIL - ϕ IL 154
 STA. 170+20.46
 N: 556,914.62
 E: 361,986.08



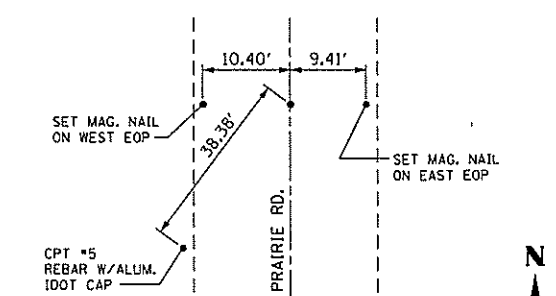
CONTROL POINT #101
 SET MAG. NAIL - ϕ IL 154
 STA. 147+59.42
 N: 557,934.58
 E: 359,968.17



CONTROL POINT #102
 SET MAG. NAIL - ϕ PRAIRIE RD. & IL 154
 STA. 159+12.00 IL 154 =
 STA. 10+00.00 PRAIRIE RD.
 N: 557,414.65
 E: 360,996.81



CONTROL POINT #103
 SET MAG. NAIL - ϕ PRAIRIE RD.
 STA. 04+01.43
 N: 556,816.08
 E: 360,999.12



CONTROL POINT #104
 SET MAG. NAIL - ϕ PRAIRIE RD.
 STA. 15+86.84
 N: 558,001.48
 E: 360,994.55

BENCHMARK DATA

B.M. NO.	DESCRIPTION	ELEVATION
BM 154-5	CUT "X" ON NORTH FLANGE BOLT ON FIRE HYDRANT @ SE CORNER OF IL 154 & PRAIRIE ROAD.	416.26

POWER - I:\Bentley\Bentley\Projects\2014\111004-1B\CD\DWG\111004-1B.dwg
 FILE NAME - 111004-1B.dwg
 PLOT DATE - 3/19/2014



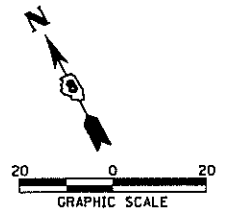
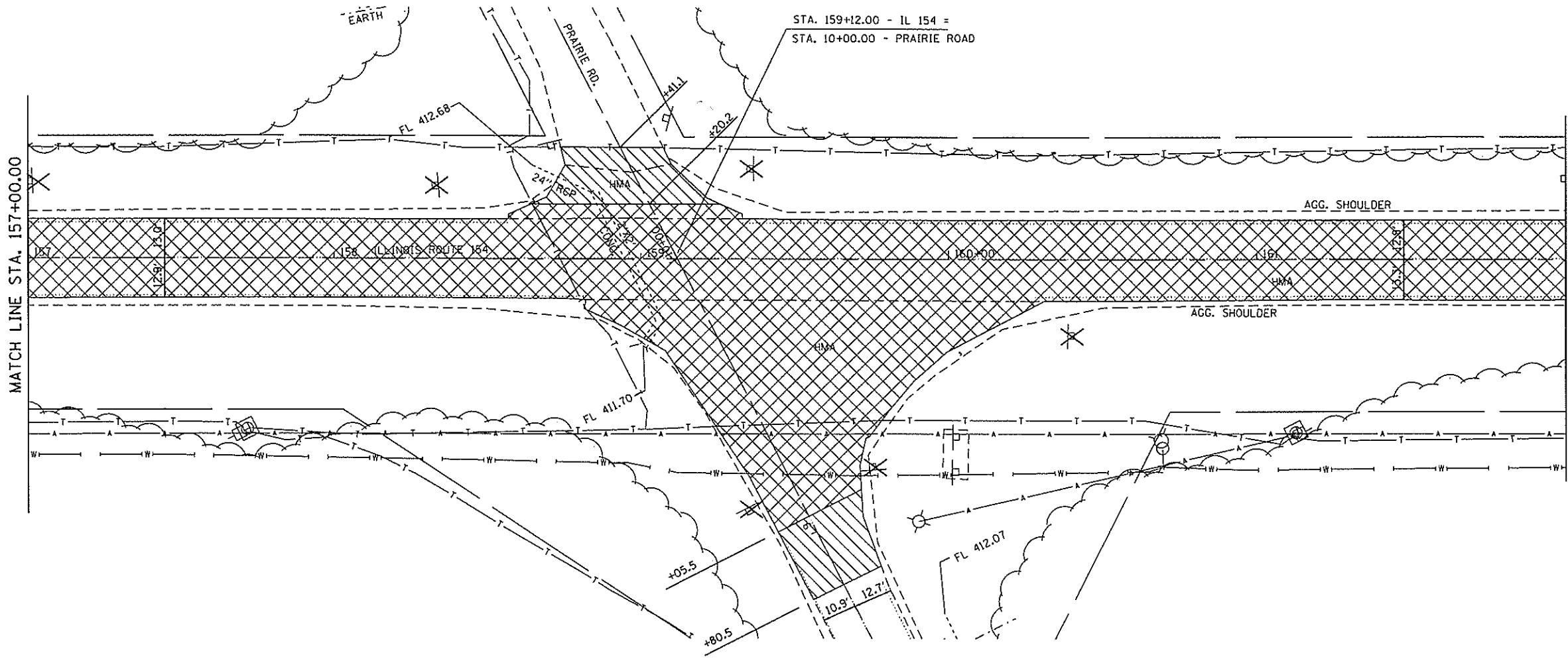
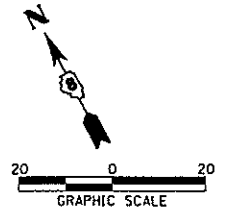
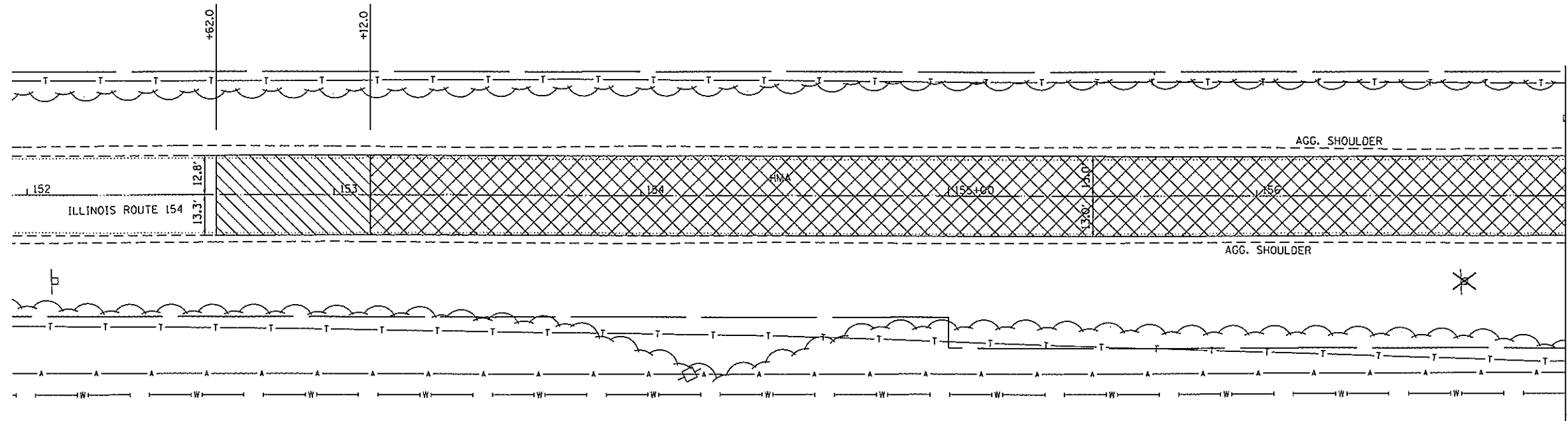
USER NAME = jdk1	DESIGNED - JCG	REVISED -
PRINTER =	DRAWN - MSJ	REVISED -
PLDT SCALE = 2.00' / in.	CHECKED - MJB	REVISED -
PLOT DATE = 3/19/2014	DATE - 3-18-14	REVISED -

STATE OF ILLINOIS
 DEPARTMENT OF TRANSPORTATION

HORIZONTAL ALIGNMENT / SURVEY TIES

SCALE: NTS SHEET NO. 1 OF 1 SHEETS STA. TO STA.

F.A.P. RTE. 329	SECTION 125-1	COUNTY RANDOLPH	TOTAL SHEETS 20	SHEET NO. 6
ILLINOIS FED. AID PROJECT				CONTRACT NO. 76G70



- REMOVAL LEGEND**
- BUTT JOINT
 - PAVEMENT MILLING
 - SIGN RELOCATION

DRIVER: I:\Benley\91\Prnt\p-rnd-gntzr-1\DOT\1\DOT.plt, b=pltefg
 FILE NAME: X:\DATA\15711184-18\CD\2-11-14\15711184-18.dwg
 PLOT DATE: 3/19/2014

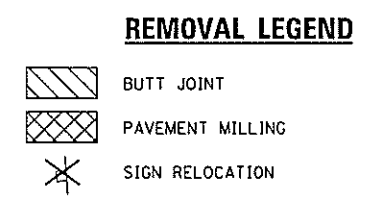
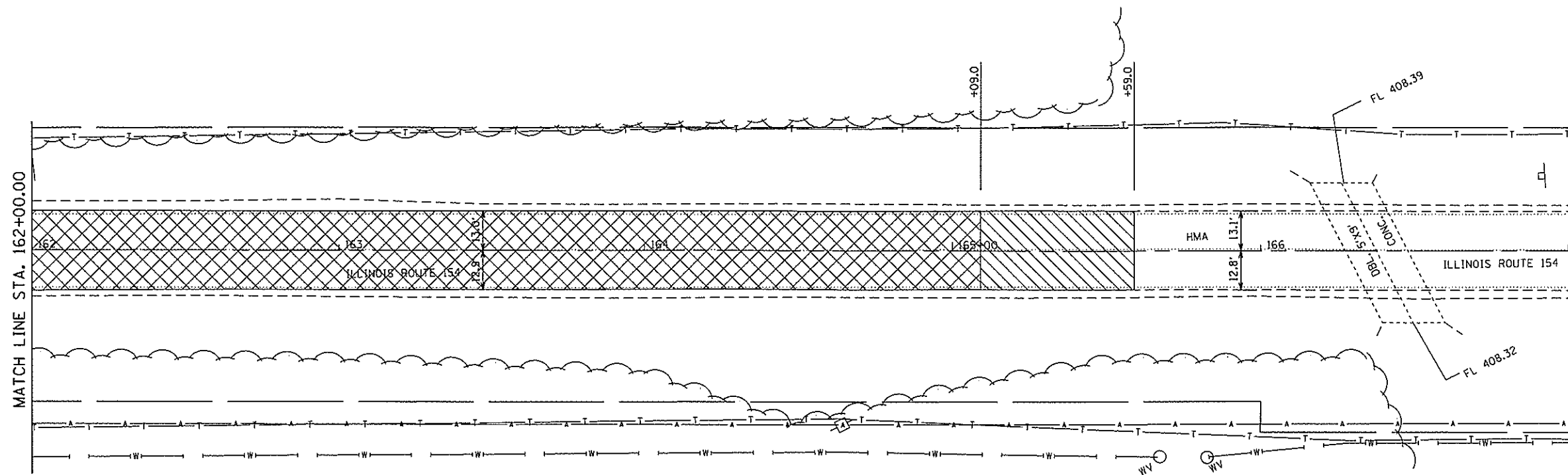
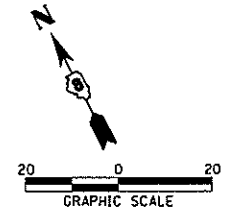


USER NAME = jgd1	DESIGNED - JGG	REVISED -
PRINTER =	DRAWN - MSJ	REVISED -
PLOT SCALE = 48.00' / 1"	CHECKED - MJB	REVISED -
PLOT DATE = 3/19/2014	DATE - 3-18-14	REVISED -

STATE OF ILLINOIS
DEPARTMENT OF TRANSPORTATION

REMOVAL PLANS
 SCALE: 1"=20' SHEET NO. 1 OF 2 SHEETS STA. 152+00 TO STA. 162+00

F.A.P. RTE. 329	SECTION 125-1	COUNTY RANDOLPH	TOTAL SHEETS 20	SHEET NO. 7
CONTRACT NO. 76G70				
[ILLINOIS] FED. AID PROJECT				



DRIVER = J:\BenChay\1\Print\Print\Print\11007\11007.dwg
 FILE NAME = X:\GIVE\2014\11007\11007.dwg
 TO: 11007\11007.dwg

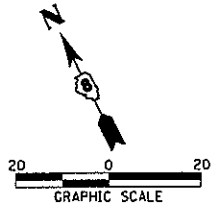


USER NAME = jdk1	DESIGNED - JGG	REVISED -
PRINTER =	DRAWN - MSJ	REVISED -
PLOT SCALE = 48.00' / in.	CHECKED - MJB	REVISED -
PLOT DATE = 3/19/2014	DATE - 3-18-14	REVISED -

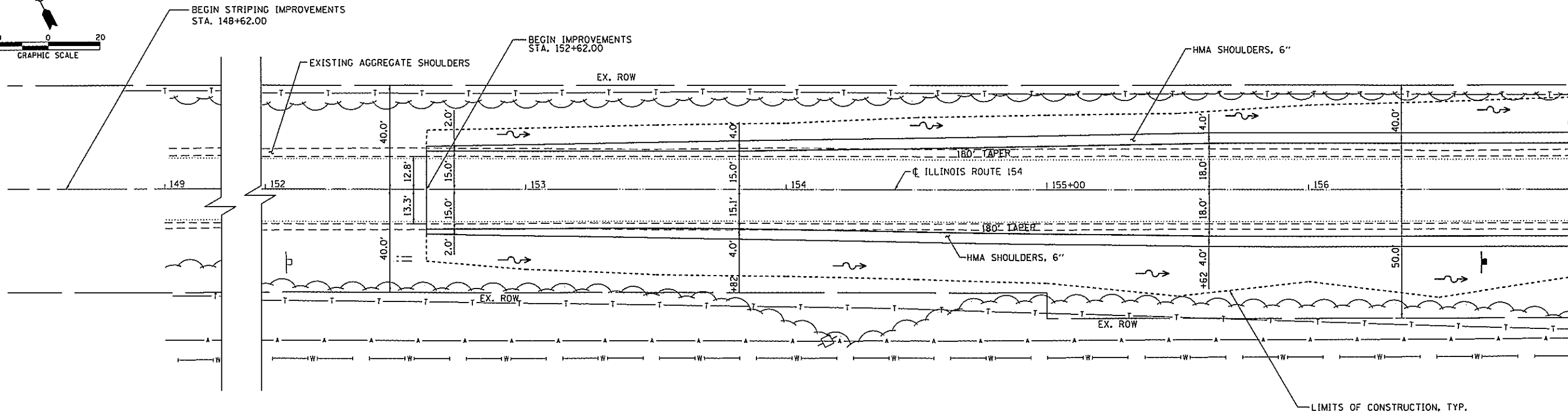
STATE OF ILLINOIS
DEPARTMENT OF TRANSPORTATION

REMOVAL PLANS
 SCALE: 1"=20' SHEET NO. 2 OF 2 SHEETS STA. 162+00 TO STA. 167+00

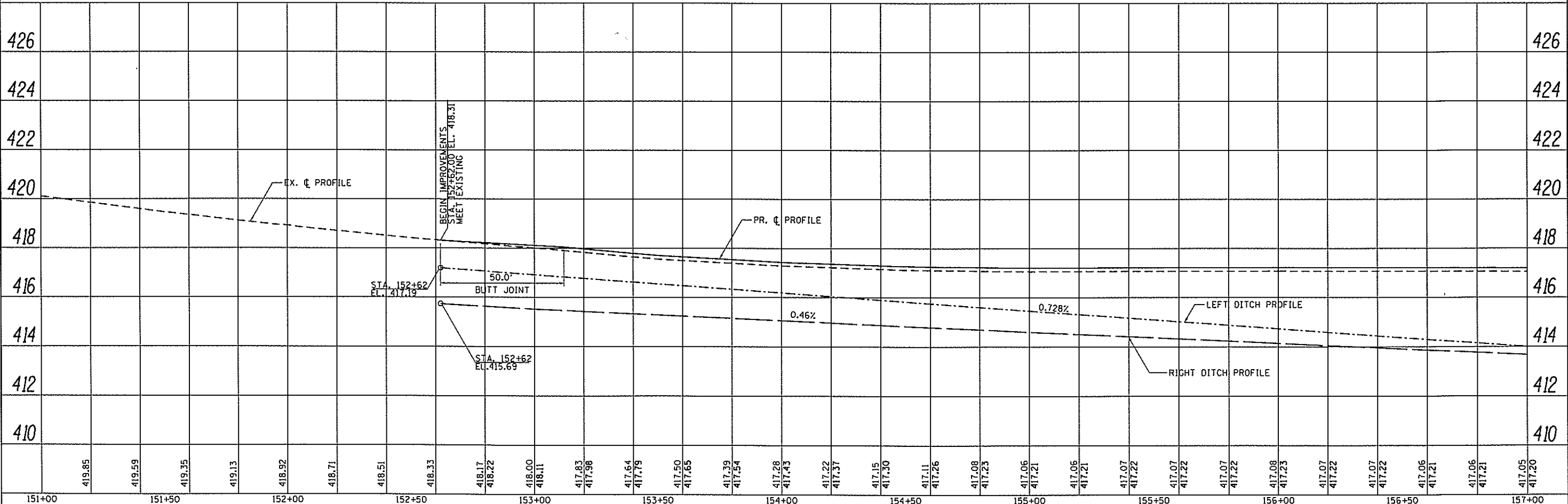
F.A.P. RTE.	SECTION	COUNTY	TOTAL SHEETS	SHEET NO.
329	125-1	RANDOLPH	20	8
CONTRACT NO. 76G70				
[ILLINOIS] FED. AID PROJECT				



DATE	
BY	
REVISIONS	
NO.	
DATE	
BY	
DESCRIPTION	



DATE	
BY	
REVISIONS	
NO.	
DATE	
BY	
DESCRIPTION	



DRIVER: J:\Bentley\Bentley\Print\pmp\gpenzer\15007\15007.dwg, plotter: f:\plotter\lpr2.dwg
 FILE NAME: X:\CNC\15007\15007.dwg, printer: lpr2.dwg, scale: 1"=20'

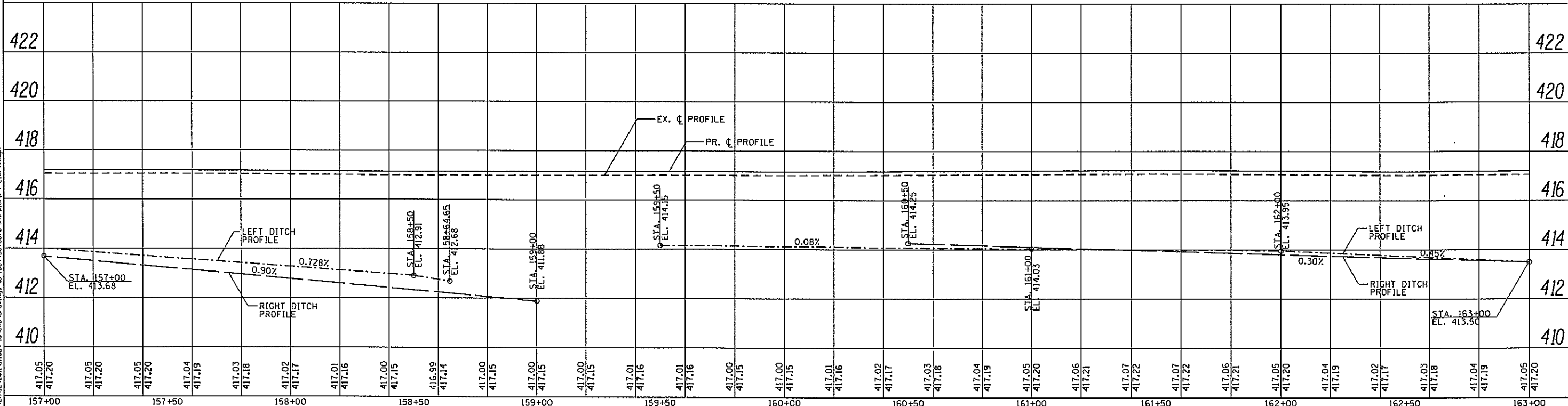
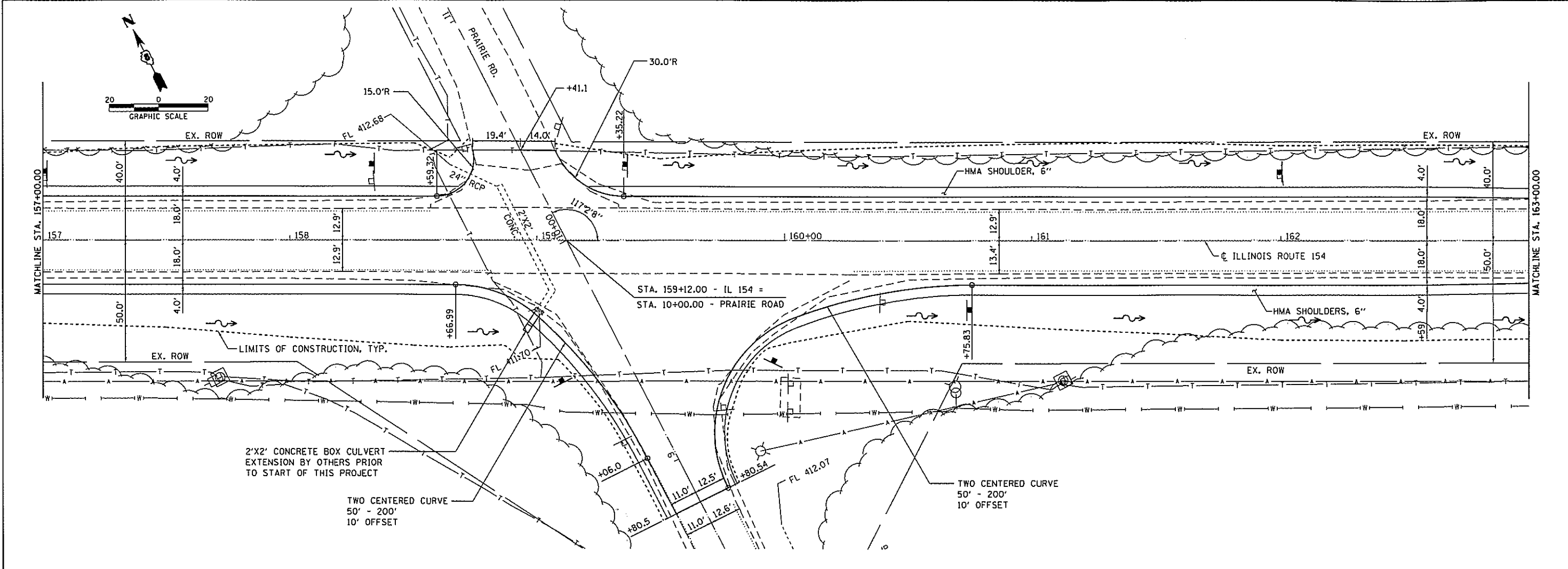
Foth Infrastructure & Environment, LLC		USER NAME: jdk1 PRINTER: MSJ PLOT SCALE: 48.0000' / in. PLOT DATE: 3/19/2014	DESIGNED: JGG DRAWN: MSJ CHECKED: MJB DATE: 3-18-14	REVISED: - REVISED: - REVISED: - REVISED: -	STATE OF ILLINOIS DEPARTMENT OF TRANSPORTATION		PLAN AND PROFILE - IL RTE 154		F.A.P. RTE.: 329 SECTION: 125-1 COUNTY: RANDOLPH CONTRACT NO.: 76G70 ILLINOIS FED. AID PROJECT	TOTAL SHEETS: 9 SHEET NO.: 1
--	--	---	--	--	---	--	--------------------------------------	--	--	---------------------------------

SCALE: 1"=20' SHEET 1 OF 3 SHEETS STA. 151+00.00 TO STA. 157+00.00

DATE	
BY	
PLAN	DESIGNED - JGG
NOTED	DRAWN - MSJ
ALIGNED	CHECKED - MJB
CHECKED	DATE - 3-18-14
FILE NO.	

DATE	
BY	
PROFILE	DESIGNED - JGG
NOTED	DRAWN - MSJ
ALIGNED	CHECKED - MJB
CHECKED	DATE - 3-18-14
FILE NO.	

DRIVER: j:\Bentley\BVP\print\print\mtd\gmszr\1007\1007.plt
 FILE NAME: x:\CHN\1501\11054-18\CAD\dwg\154-pln.dwg



157+00	157+50	158+00	158+50	159+00	159+50	160+00	160+50	161+00	161+50	162+00	162+50	163+00													
417.05	417.20	417.05	417.20	417.04	417.19	417.03	417.18	417.02	417.17	417.07	417.22	417.06	417.21	417.05	417.20	417.04	417.19	417.02	417.17	417.03	417.18	417.04	417.19	417.05	417.20



USER NAME = jdk1	DESIGNED - JGG	REVISED -
PRINTER =	DRAWN - MSJ	REVISED -
PLOT SCALE = 40.0000' / 1" =	CHECKED - MJB	REVISED -
PLOT DATE = 3/19/2014	DATE - 3-18-14	REVISED -

**STATE OF ILLINOIS
DEPARTMENT OF TRANSPORTATION**

PLAN AND PROFILE - IL RTE 154

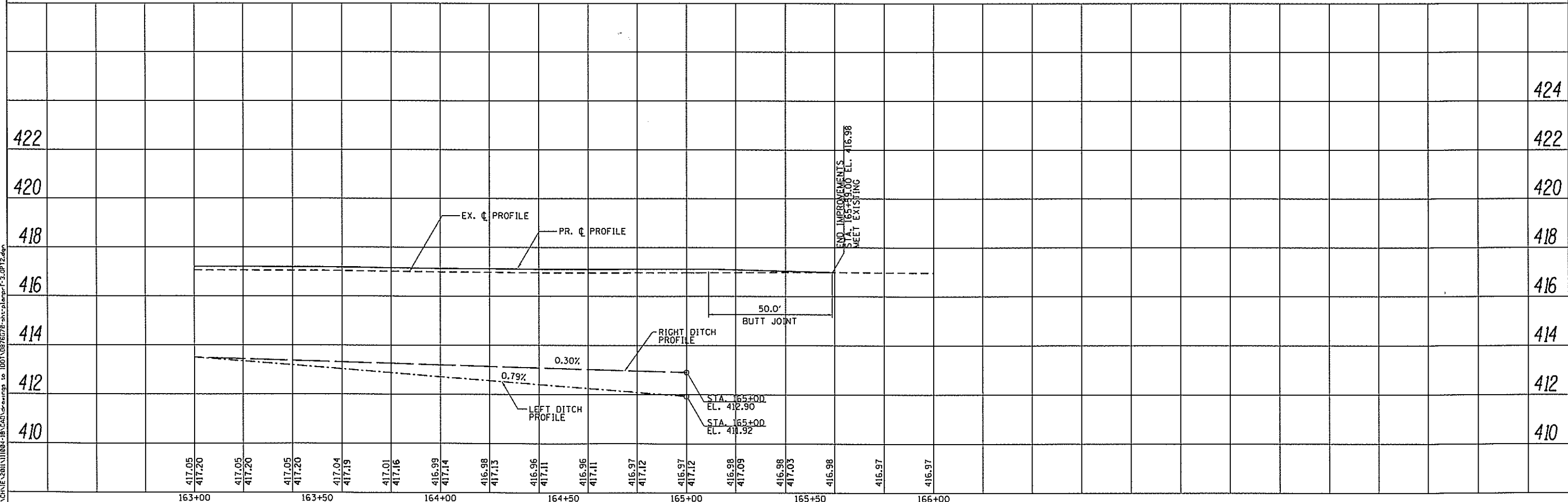
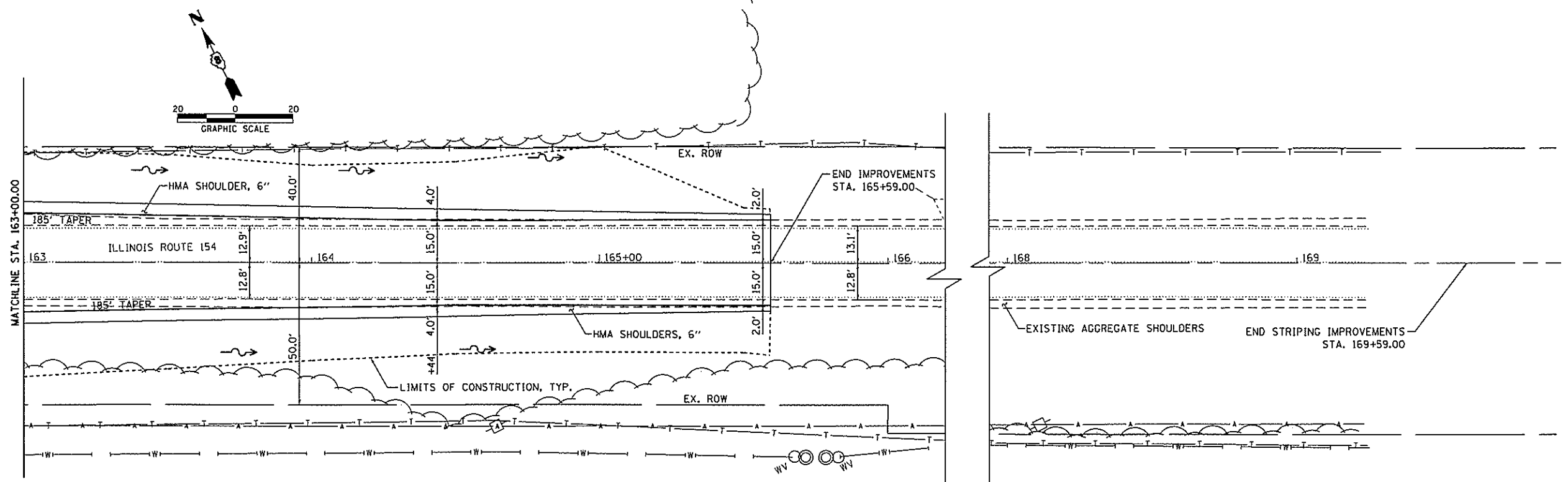
SCALE: 1"=20' SHEET 2 OF 3 SHEETS STA. 157+00.00 TO STA. 163+00.00

F.A.P. RTE.	SECTION	COUNTY	TOTAL SHEETS	SHEET NO.
329	125-1	RANDOLPH	20	10
CONTRACT NO. 76G70			ILLINOIS FED. AID PROJECT	

PLAN	DESIGNED	BY	DATE
NOTE BOOK	PLOTTED		
NO.	ALIGNED		
	CHECKED		
	FILE NAME		

PROFILE	DESIGNED	BY	DATE
NOTE BOOK	PLOTTED		
NO.	ALIGNED		
	CHECKED		
	FILE NAME		

DRIVER: J:\Ben\164\164-Plan\Profile\164-Plan\164-Plan.dwg
 FILE NAME: X:\CHN\164\164-Plan\Profile\164-Plan.dwg

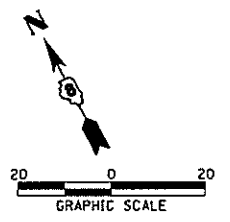
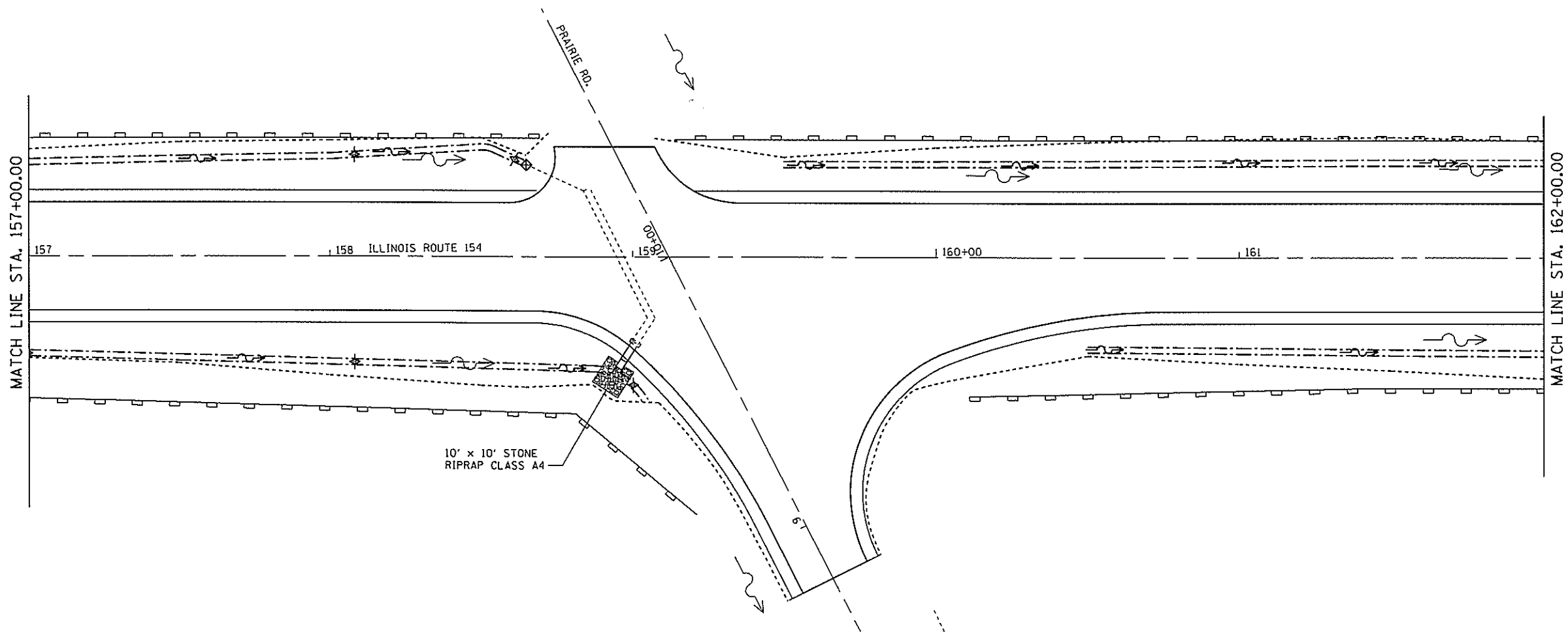
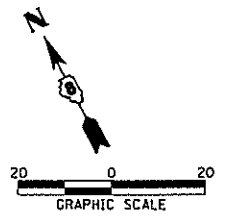
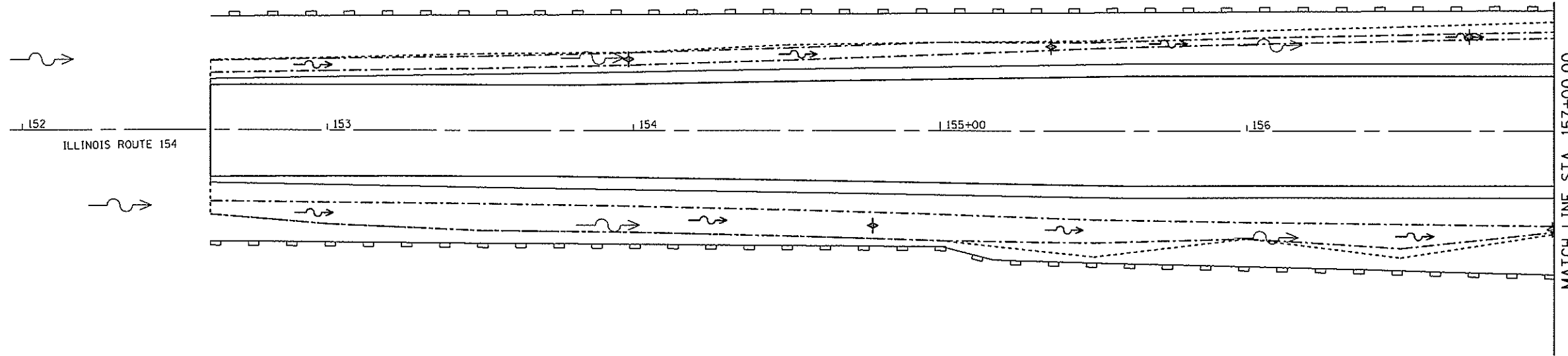


USER NAME = jca1	DESIGNED - JCC	REVISED -
PRINTER =	DRAWN - MSJ	REVISED -
PLOT SCALE = 40.0000' / in.	CHECKED - MJB	REVISED -
PLOT DATE = 3/19/2014	DATE - 3-18-14	REVISED -

STATE OF ILLINOIS
DEPARTMENT OF TRANSPORTATION

PLAN AND PROFILE - IL RTE 154
SCALE: 1"=20' SHEET 3 OF 3 SHEETS STA. 163+00.00 TO STA. 166+00.00

F.A.P. RTE.	SECTION	COUNTY	TOTAL SHEETS	SHEET NO.
329	125-1	RANDOLPH	20	11
			CONTRACT NO. 76G70	
[ILLINOIS] FED. AID PROJECT				



- LEGEND**
- TEMPORARY DITCH CHECK
 - INLET AND PIPE PROTECTION
 - PERIMETER EROSION BARRIER

DRIVER = I:\Bentley\Bentley\Print\Print\mde-gmizer\111001\11001.plt_bep1.ctb
 FILE NAME = Z:\CADD\PROJECTS\111001\11001.dwg

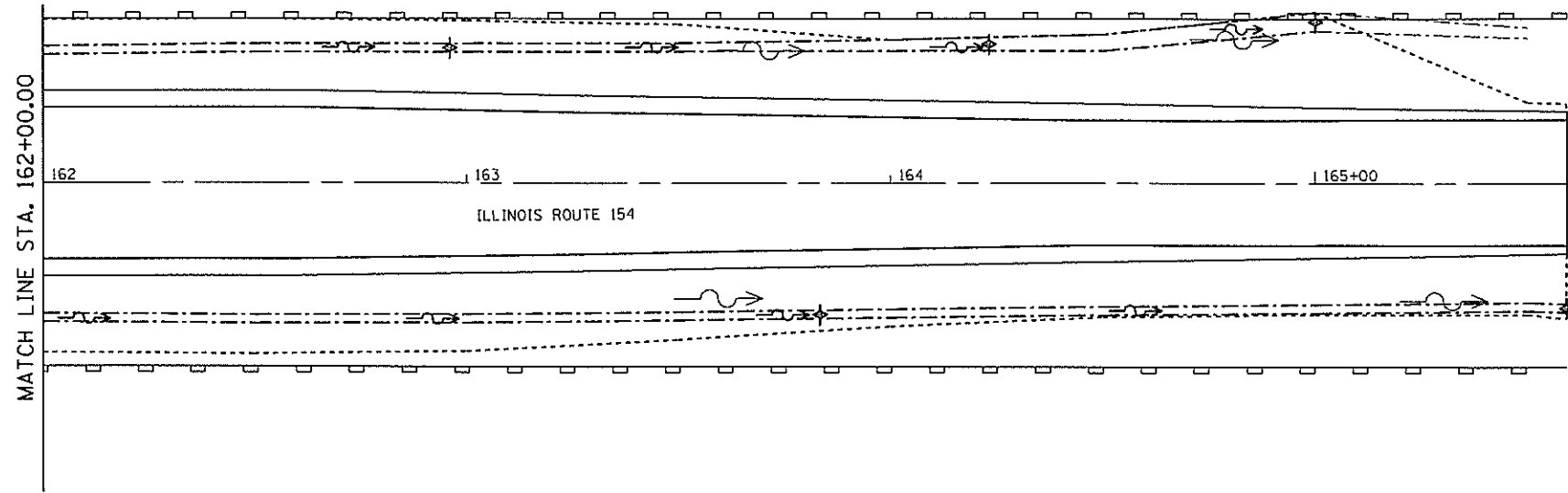
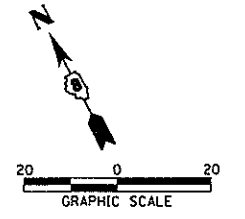


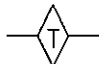


USER NAME = jdk1	DESIGNED = JGG	REVISED =
PRINTER =	DRAWN = MSJ	REVISED =
PLDT SCALE = 48.00' / in.	CHECKED = MJB	REVISED =
PLDT DATE = 3/19/2014	DATE = 3-18-14	REVISED =

STATE OF ILLINOIS
DEPARTMENT OF TRANSPORTATION

EROSION CONTROL PLANS
SCALE: 1"=20' SHEET NO. 1 OF 2 SHEETS STA. 152+00 TO STA. 162+00

F.A.P. RTE.	SECTION	COUNTY	TOTAL SHEETS	SHEET NO.
329	125-1	RANDOLPH	20	12
ILLINOIS FED. AID PROJECT				



- LEGEND**
-  TEMPORARY DITCH CHECK
 -  INLET AND PIPE PROTECTION
 -  PERIMETER EROSION BARRIER

DRIVER - J:\Ben\cay\81\Print\PrintDgn\er\11001\11001.dwg
 FILE NAME - X:\SCALE\2011\11001\11001.dwg
 TO: 1001\1001\11001.dwg



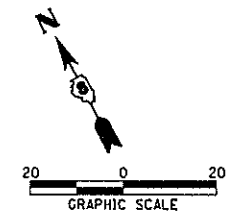
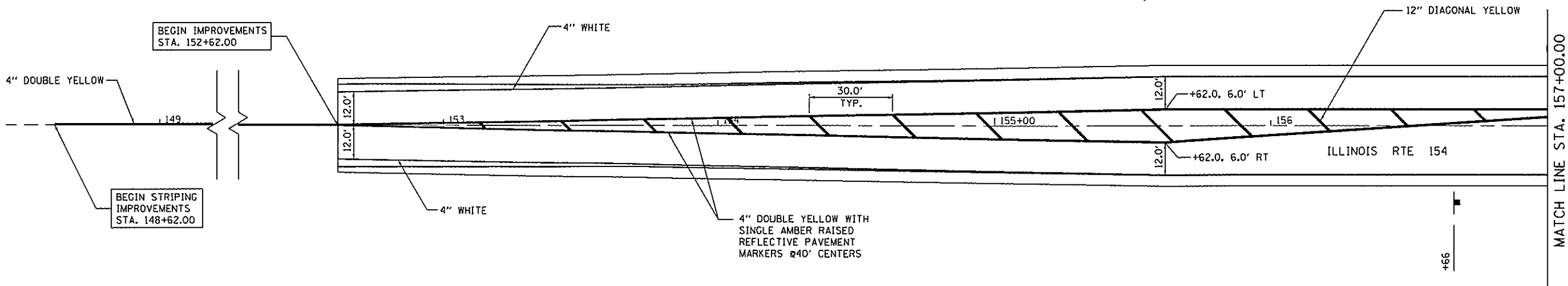
USER NAME - jdk1	DESIGNED - JGC	REVISED -
PRINTER -	DRAWN - MSJ	REVISED -
PLOT SCALE - 48.00' / 1"	CHECKED - MJB	REVISED -
PLOT DATE - 3/19/2014	DATE - 3-18-14	REVISED -

**STATE OF ILLINOIS
DEPARTMENT OF TRANSPORTATION**

EROSION CONTROL PLANS

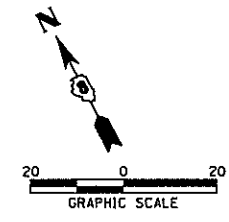
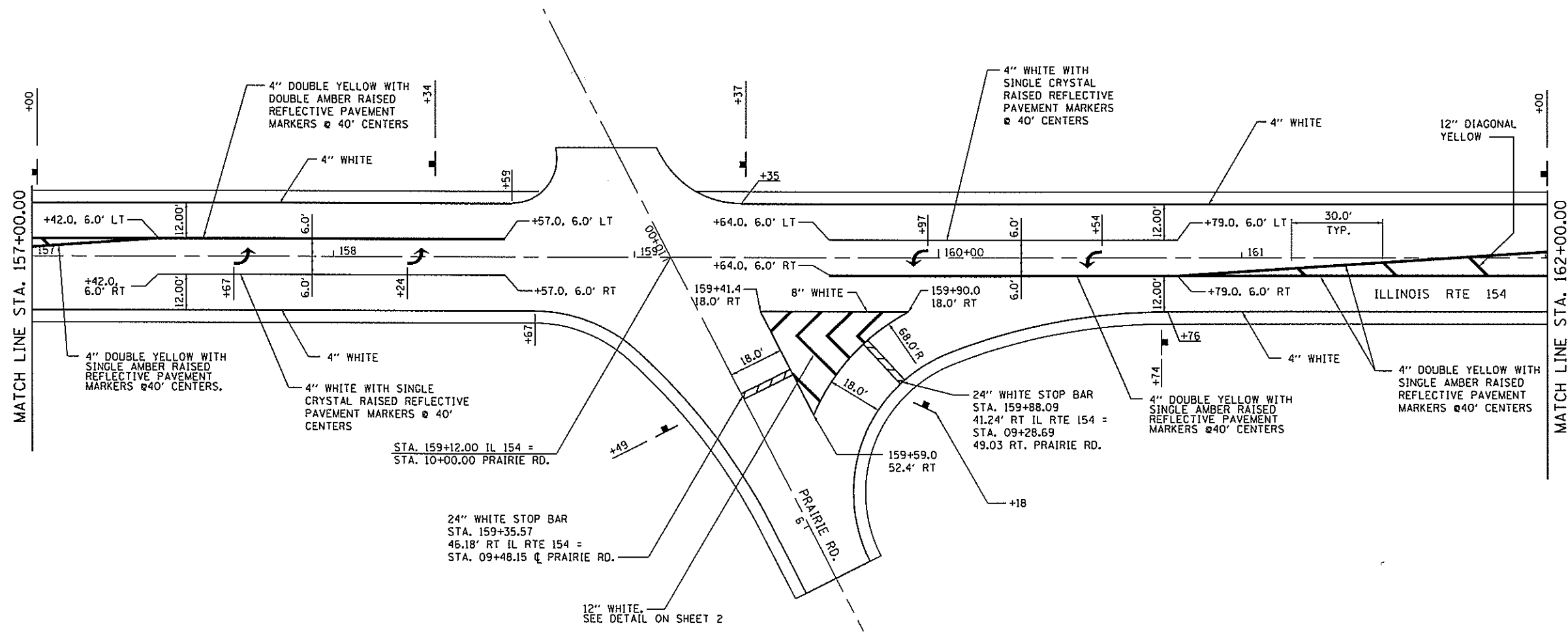
F.A.P. RTE.	SECTION	COUNTY	TOTAL SHEETS	SHEET NO.
329	125-1	RANDOLPH	20	13
CONTRACT NO. 76G70			ILLINOIS FED. AID PROJECT	

SCALE: 1"=20' SHEET NO. 2 OF 2 SHEETS STA. 163+00 TO STA. 166+00



NOTES

1. SIGNS SHOWN ARE EXISTING SIGNS THAT WERE RELOCATED.



DRIVER - J:\Bentley\GIS\Print\Print\mxd\gmsm\11.001\11.001.dwg
 FILE NAME - X:\GIS\15701\15701.dwg
 PLOT DATE - 3/19/2014

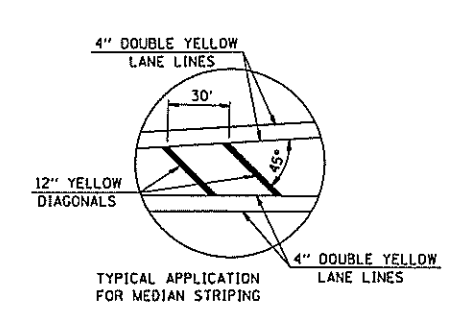
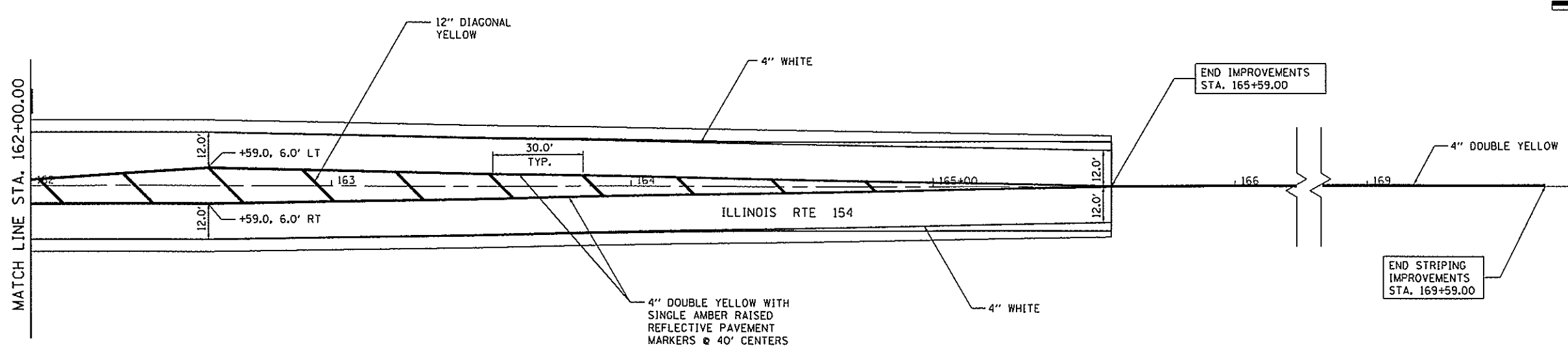
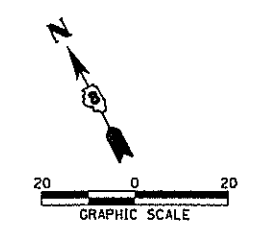


USER NAME = jgkl	DESIGNED - JGG	REVISED -
PRINTER =	DRAWN - MSJ	REVISED -
PLOT SCALE = 40.00' / in.	CHECKED - MJB	REVISED -
PLOT DATE = 3/19/2014	DATE - 3-18-14	REVISED -

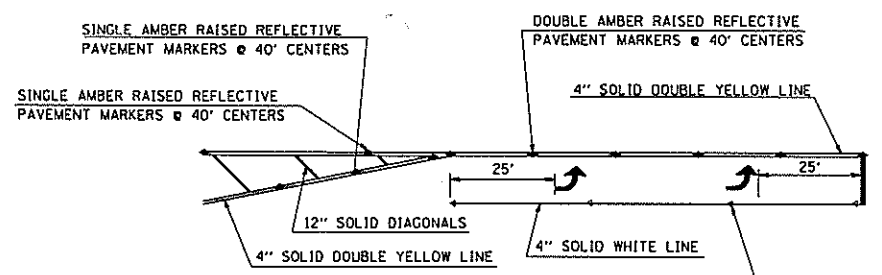
STATE OF ILLINOIS
DEPARTMENT OF TRANSPORTATION

PAVEMENT MARKING PLANS
 SCALE: 1"=20' SHEET NO. 1 OF 2 SHEETS STA. 148+62 TO STA. 162+00

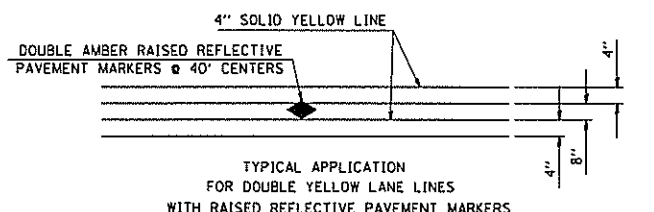
F.A.P. RTE. 329	SECTION 125-1	COUNTY RANDOLPH	TOTAL SHEETS 20	SHEET NO. 14
CONTRACT NO. 76G70			ILLINOIS FED. AID PROJECT	



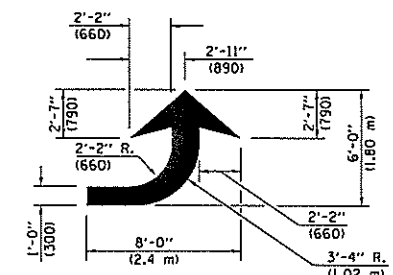
DETAIL 'A'
NOT TO SCALE



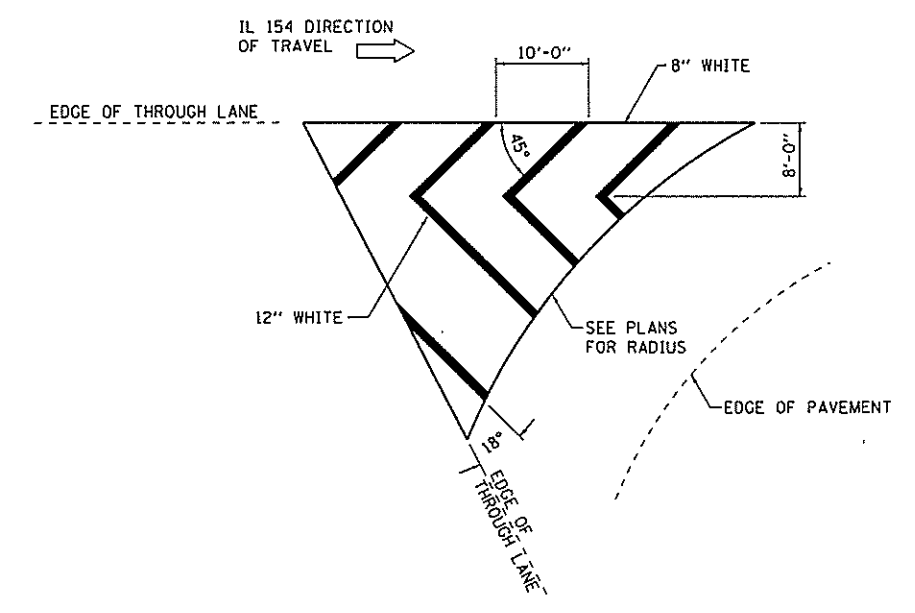
DETAIL 'C'



DETAIL 'B'



LEFT ARROW
REVERSE FOR RIGHT ARROW
AREA = 15.6 SQ. FT. (1.47 m²)
(WHITE)



ISLAND DETAILS

DRIVER = I:\Bentley\B1\Print\PrintGp-gmzr\11001\11001.dwg
 FILE NAME = 215015301\11001.dwg
 PLOT DATE = 3/19/2014



USER NAME = jdk1	DESIGNED - JGG	REVISED -
PRINTER =	DRAWN - MSJ	REVISED -
PLOT SCALE = 48.00' / in.	CHECKED - MJB	REVISED -
PLOT DATE = 3/19/2014	DATE - 3-18-14	REVISED -

**STATE OF ILLINOIS
DEPARTMENT OF TRANSPORTATION**

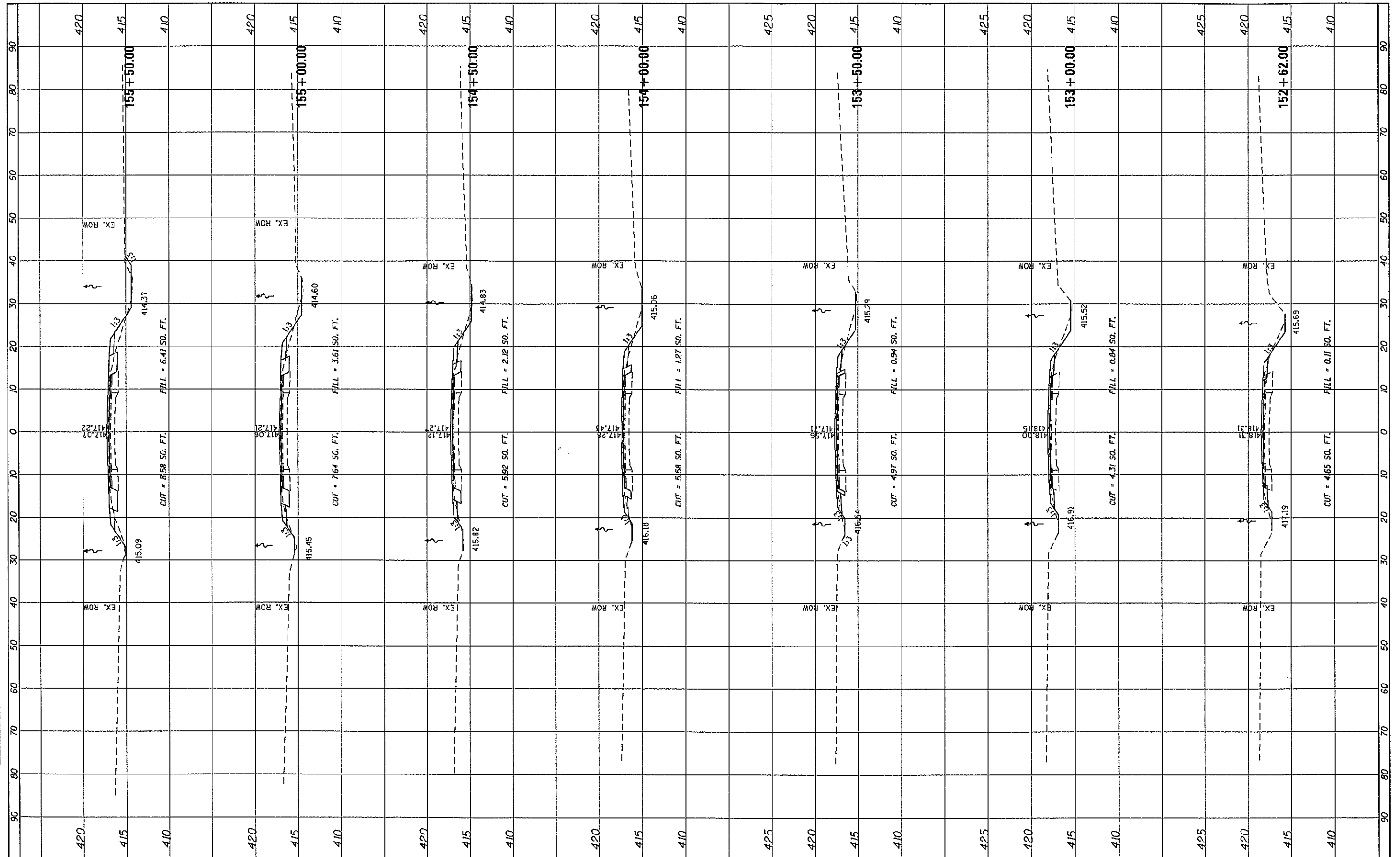
PAVEMENT MARKING PLANS

SCALE: 1"=20' SHEET NO. 2 OF 2 SHEETS STA. 162+00 TO STA. 169+59

F.A.P. RTE. 329	SECTION 125-1	COUNTY RANDOLPH	TOTAL SHEETS 20	SHEET NO. 15
CONTRACT NO. 76G70			ILLINOIS FED. AID PROJECT	

FINAL SURVEY	SURVEYED	BY	DATE
NOTE BOOK NO.	PLOTTED		
	TEMPLATE		
	AREAS CHECKED		

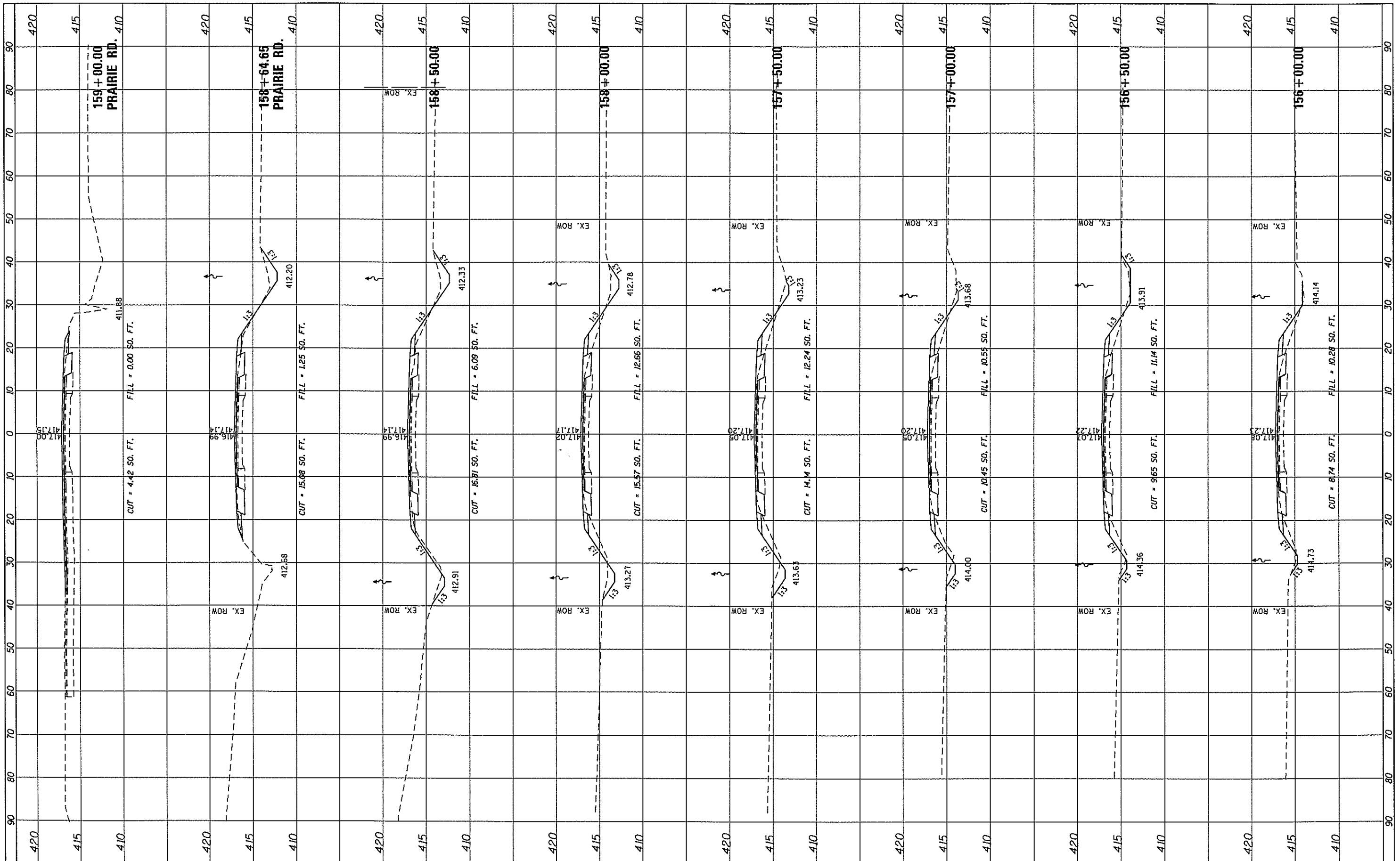
ORIGINAL SURVEY	SURVEYED	BY	DATE
NOTE BOOK NO.	PLOTTED		
	TEMPLATE		
	AREAS CHECKED		



FILE NAME = X:\CH\154\2011\11084-15\CAD\Drawings to IOD\086670-shs-xshs.dgn	USER NAME = jdg1	DESIGNED - JGG	REVISED -	STATE OF ILLINOIS DEPARTMENT OF TRANSPORTATION	CROSS SECTION - IL RTE 154			F.A.P. RTE. 154	SECTION 125-1	COUNTY RANDOLPH	TOTAL SHEETS 20	SHEET NO. 17
	PLOT SCALE = 20.00' / in.	CHECKED - MJB	REVISED -		SCALE:	SHEET 1 OF 4 SHEETS	STA. 152+62.00 TO STA. 155+50.00	CONTRACT NO. 76G70				
MODELNAME	PLOT DATE = 3/19/2014	DATE - 3/18/2014	REVISED -		ILLINOIS FED. AID PROJECT							

FINISHED SURVEY	BY	DATE
PLOTTED		
NOTE BOOK		
AREAS CHECKED		

ORIGINAL SURVEY	BY	DATE
PLOTTED		
NOTE BOOK		
AREAS CHECKED		



FILE NAME = X:\CH\154\2011\11084-18\CAD\Drawings to 100\1084-18\154-18-1.dwg	USER NAME = jgd	DESIGNED - JGG	REVISED -	STATE OF ILLINOIS DEPARTMENT OF TRANSPORTATION	CROSS SECTION - IL RTE 154 SCALE: SHEET 2 OF SHEETS STA. 156+00.00 TO STA. 159+00.00	F.A. RTE. 154	SECTION 125-1	COUNTY RANDOLPH	TOTAL SHEETS 20	SHEET NO. 18	
PLLOT SCALE = 20.00' / in.	CHECKED - MJB	DATE - 3/18/2014	REVISED -			CONTRACT NO. 76G70					
PLLOT DATE = 3/19/2014						ILLINOIS FED. AID PROJECT					

