

06-13-14 LETTING ITEM 138

STATE OF ILLINOIS  
DEPARTMENT OF TRANSPORTATION  
DIVISION OF HIGHWAYS

F.A.I. RTE.	SECTION	COUNTY	TOTAL SHEETS	SHEET NO.
55/70	60-(6, 7, 8, 9, 10)I, 60-(1, 2)I-3	MADISON	9	1
		ILLINOIS	CONTRACT NO. 76G88	

FOR INDEX OF SHEETS, SEE SHEET NO. 2

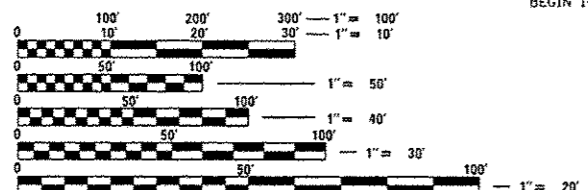
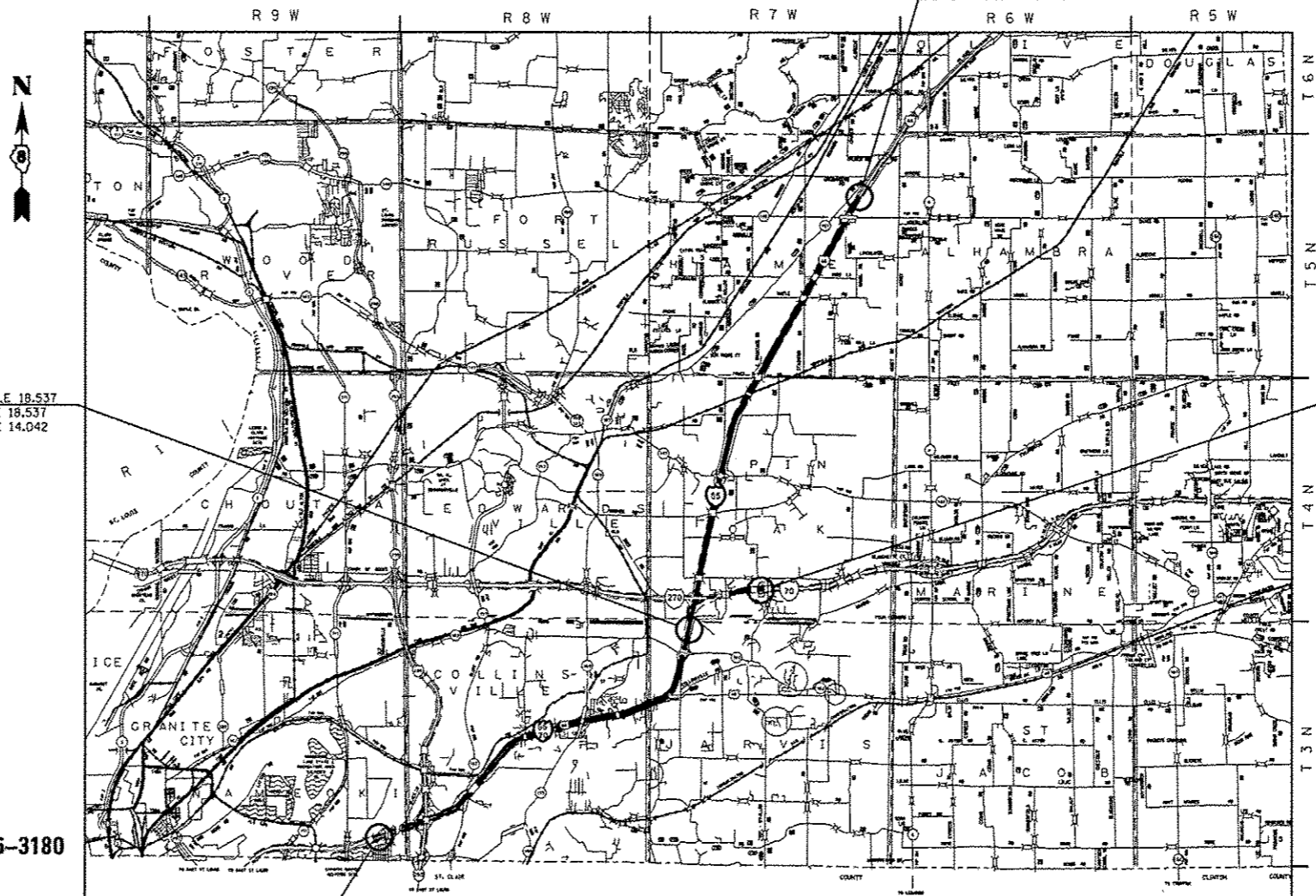
AAOT: I-55/70 - 51,900(2014)/59,600(2034) MU = 14.4% SU = 2.3%  
I-70 - 30,200(2014)/34,700(2034) MU = 27.3% SU = 2.8%  
I-55 - 30,100(2014)/34,600(2034) MU = 20.1% SU = 1.6%

PROPOSED  
HIGHWAY PLANS

FAI ROUTE 55/70 (I-55/70)  
SECTION 60-(6, 7, 8, 9, 10)I, 60-(1, 2)I-3

CRACK SEAL  
MADISON COUNTY  
C-98-012-14

BEGIN I-55/70: LAT. - 38°39'55"N  
LONG. - 90°03'24"W  
END I-55/70: LAT. - 38°44'30"N  
LONG. - 89°54'36"W  
BEGIN I-70: LAT. - 38°44'30"N  
LONG. - 89°54'36"W  
END I-70: LAT. - 38°45'20"N  
LONG. - 89°52'08"W  
BEGIN I-55: LAT. - 38°44'30"N  
LONG. - 89°54'36"W  
END I-55: LAT. - 38°54'21"N  
LONG. - 89°49'35"W



FULL SIZE PLANS HAVE BEEN PREPARED USING STANDARD ENGINEERING SCALES. REDUCED SIZED PLANS WILL NOT CONFORM TO STANDARD SCALES. IN MAKING MEASUREMENTS ON REDUCED PLANS, THE ABOVE SCALES MAY BE USED.

J.U.L.I.E.  
JOINT UTILITY LOCATION INFORMATION FOR EXCAVATION  
1-800-892-0123  
OR 811

PROJECT ENGINEER: MICHAEL PRITCHETT (618) 346-3180  
DESIGNER: BO WEDMORE (618) 346-3206

CONTRACT NO. 76G88

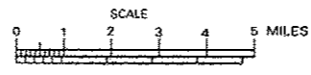
END I-55/70 MILE 18.537  
BEGIN I-55 MILE 18.537  
BEGIN I-70 MILE 14.042

END I-55 MILE 31.051

END I-70 MILE 16.796

BEGIN I-55/70 MILE 8.122

LOCATION MAP



GROSS LENGTH = x.xx FT. = x.xxx MILE  
NET LENGTH = x.xx FT. = x.xxx MILE

STATE OF ILLINOIS  
DEPARTMENT OF TRANSPORTATION  
DIVISION OF HIGHWAYS

SUBMITTED *May 28 2014*  
*Jeffrey Z. Kan...*  
DEPUTY DIRECTOR OF HIGHWAYS, REGION ENGINEER

*May 9 2014*  
*John D. Baranzelli P.E.*  
ENGINEER OF DESIGN AND ENVIRONMENT

*May 9 2014*  
*Omer Osman P.E.*  
DIRECTOR OF HIGHWAYS, CHIEF ENGINEER

PRINTED BY THE AUTHORITY  
OF THE STATE OF ILLINOIS

INDEX OF SHEETS

1. COVER SHEET
2. GENERAL NOTES, INDEX OF SHEETS & HIGHWAY STANDARDS
3. SUMMARY OF QUANTITIES
- 4.-6. TYPICAL SECTIONS
7. SCHEDULES
8. LOCATION MAP
9. CRACK & JOINT SEALING DETAIL

STANDARDS

- |           |   |
|-----------|---|
| 000001-06 | STANDARD SYMBOLS, ABBREVIATIONS AND PATTERNS                                |
| 701101-04 | OFF-RD OPERATIONS, MULTILANE, 15'(4.5m) TO 24'(600mm) FROM EDGE OF PAVEMENT |
| 701106-02 | OFF-RD OPERATIONS, MULTILANE, MORE THAN 15'(4.5m) AWAY                      |
| 701400-07 | APPROACH TO LANE CLOSURE, FREEWAY/EXPRESSWAY                                |
| 701401-08 | LANE CLOSURE FREEWAY/EXPRESSWAY   |
| 701411-08 | LANE CLOSURE, MULTILANE, AT ENTRANCE OR EXIT RAMP, FOR SPEEDS ≥ 45MPH       |
| 701426-06 | LANE CLOSURE, MULTILANE, INTERMITTENT OR MOVING OPER., FOR SPEEDS ≥ 45MPH   |
| 701428    | TRAFFIC CONTROL SETUP AND REMOVAL FREEWAY/EXPRESSWAY                        |
| 701901-03 | TRAFFIC CONTROL DEVICES   |

GENERAL NOTES

1. ILLINOIS STATE LAW REQUIRES A 48-HOUR NOTICE TO BE GIVEN TO UTILITIES BEFORE DIGGING. FIELD MARKING OF FACILITIES MAY BE OBTAINED BY CONTACTING J.U.L.I.E. (1-800-892-0123 OR 811) OR FOR NON-MEMBERS THE UTILITY COMPANY DIRECTLY.
2. UTILITY INTERFERENCES ARE NOT ANTICIPATED ON THIS CONTRACT. IT SHALL BE THE CONTRACTOR'S RESPONSIBILITY TO COORDINATE HIS CONSTRUCTION ACTIVITIES WITH THE VARIOUS UTILITY OWNERS. ALL POTENTIAL CONFLICTS SHALL BE INVESTIGATED AND REMEDIAL ACTION TAKEN PRIOR TO INTERRUPTION OF THE CONTRACTOR'S PROGRESS. NO ADDITIONAL COST SHALL BE ADDED TO THE CONTRACT RESULTING FROM UTILITY CONFLICTS.
3. FLAGGERS SHALL BE PRESENT DURING ALL CLOSURE HOURS INCLUDING LUNCH HOUR AND NO ADDITIONAL COMPENSATION SHALL BE ALLOWED.
4. ANY RAISED REFLECTIVE PAVEMENT MARKERS ENCOUNTERED SHALL BE LEFT IN PLACE. ROUTING SHALL BE GAPPED WHERE RAISED REFLECTIVE PAVEMENT MARKERS ARE ENCOUNTERED SO AS TO LEAVE THEM FUNCTIONAL.
5. RESIDENT ENGINEER SHALL DETERMINE EXACT LOCATION WHERE CRACKS ARE TO BE ROUTED AND FILLED.
6. ESTIMATED APPLICATION RATES : 0.33 LB/FT
7. CARE SHALL BE TAKEN TO AVOID ALL PAVEMENT MARKING CENTERLINES. ANY PAVEMENT MARKING DISTURBED FOR ANY REASON BY THE CONTRACTOR SHALL BE REPAIRED BY THE CONTRACTOR AT NO COST TO THE DEPARTMENT OF TRANSPORTATION.
8. AN AMOUNT OF 53930 FOOT THERMOPLASTIC PAVEMENT MARKING - LINE 6" HAS BEEN ADDED TO THE PLANS TO ACCOUNT FOR CRACKS ROUTED AND SEALED ON I-70'S EDGELINES.
9. AN AMOUNT OF 2160 FOOT SHORT TERM PAVEMENT MARKING FOR DIAGONALS ALONG I-70 HAS BEEN ADDED TO THE PLANS AND 713 SQ FT WORK ZONE PAVEMEN MARKING REMOVAL.
9. ALL STRUCTURES ARE OMITTED FROM THE CONTRACT.
10. IT IS THE INTENT OF THIS PROJECT TO ROUTE AND SEAL THE CENTERLINES. ROUTING AND SEALING WILL ALSO BE DONE AT THE TRANSVERSE JOINTS AT ALL BRIDGE AND LARGE MULTI-LANE CONCRETE PATCHES. ADDITIONAL TRANSVERSE JOINTS ARE TO BE ROUTED AND SEALED ON I-70 AT INTERVALS APPROXIMATELY 50' OR WHERE INDICATED BY THE ENGINEER.
11. THE RESIDENT ENGINEER SHALL VERIFY THE EXISTENCE OF IN PAVEMENT DETECTOR LOOPS. THE APPROXIMATE LOCATIONS ARE AS FOLLOWS:  
 I-55/70 - 38°40'03"N/90°02'56"W - MILE 8.856  
 I-55 - 38°48'26"N/89°53'32"W - MILE 24.057  
 THESE PIEZOMETER/DETECTOR LOOPS SHALL BE AVOIDED DURING THE OPERATION OF ROUTING AND SEALING. IF THESE LOOPS ARE DISTURBED BY THE CONTRACTOR, THEY SHALL BE REPAIRED/REPLACED AT THE CONTRACTOR'S EXPENSE AND AS DIRECTED BY THE ENGINEER.
12. THE ILLINOIS DEPARTMENT OF TRANSPORTATION STRONGLY ENCOURAGES THE PRIME CONTRACTOR AND THEIR APPROVED SUB-CONTRACTORS TO HIRE MINORITY, WOMEN AND DISADVANTAGED INDIVIDUALS FROM ITS FEDERALLY FUNDED HIGHWAY CONSTRUCTION CAREERS TRAINING PROGRAM (HCCTP) TO HELP MEET WORKFORCE AND TRAINEE GOALS. THIS PROGRAM IS TRAINING MINORITIES, WOMEN AND DISADVANTAGED INDIVIDUALS IN HIGHWAY CONSTRUCTION-RELATED SKILLS, E.G., MATH FOR THE TRADES, JOB READINESS, TECHNICAL SKILLS COURSEWORK (CARPENTRY, CONCRETE FLATWORK, BLUEPRINT READING, SITE PLANS, SITE WORK, TOOLS USE, ETC.) AND OSHA 10 HOUR CERTIFICATION, TO PREPARE THEM FOR A CAREER IN THE HIGHWAY CONSTRUCTION TRADES. GRADUATES ARE WELL-TRAINED AND READY TO BECOME PRODUCTIVE ENTRY-LEVEL CONSTRUCTION WORKERS. PLEASE CONTACT THE DISTRICT 8 EEO OFFICE AT 618-346-3360 AND/OR THE HCCTP COORDINATOR AT 618/874-6528 TO LEARN MORE ABOUT THE PROGRAM AND FOR ASSISTANCE IN MEETING WORKFORCE AND TRAINEE GOALS.

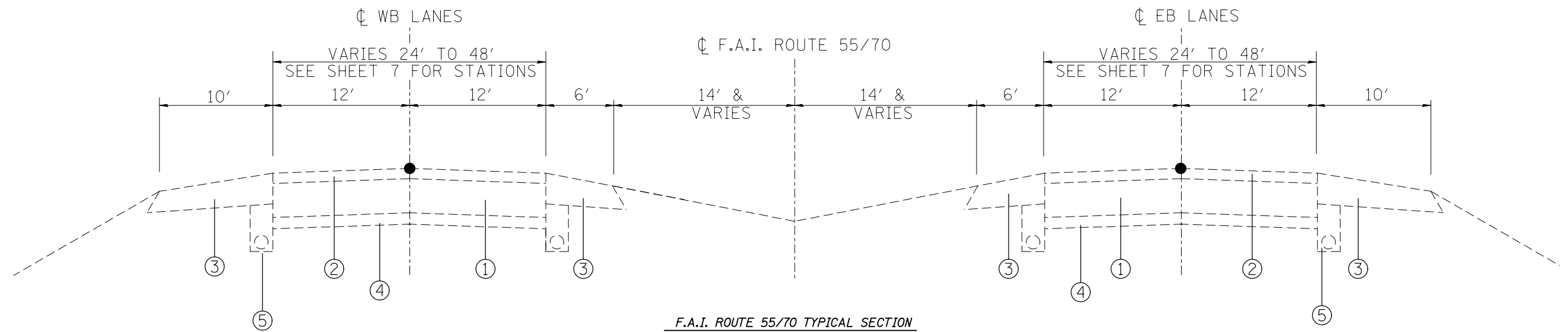
FILE NAME =	USER NAME = wadmora_jb	DESIGNED -	REVISED -	<b>STATE OF ILLINOIS DEPARTMENT OF TRANSPORTATION</b>	<b>GENERAL NOTES</b>				F.A.J. RTE.	SECTION	COUNTY	TOTAL SHEETS	SHEET NO.
c:\pvc\work\pvc\dot\wadmora_jb\0366798\dot\76g88-ahs-plan.dgn	DRAWN -	REVISED -	55/70						60-16,7,9,9,10,1,60-(1,2)-3	MADISON	9	2	
PLOT SCALE = 100.0000' / 1" =	CHECKED -	REVISED -	SCALE: SHEET NO. OF SHEETS STA. TO STA.				FED. ROAD DIST. NO. [ILLINOIS] FED. AID PROJECT						
PLOT DATE = 3/28/2014	DATE -	REVISED -											

# SUMMARY OF QUANTITIES

CODE NO.	ITEM	UNIT	TOTAL QUANTITY	CONSTR. CODE
				100% STATE
				ROADWAY
				0005
URBAN				
45100100	CRACK ROUTING (PAVEMENT)	FOOT	543497	543497
45100200	CRACK FILLING	POUND	179354	179354
67100100	MOBILIZATION	L SUM	1	1
70100420	TRAFFIC CONTROL AND PROTECTION, STANDARD 701411	EACH	52	52
70100800	TRAFFIC CONTROL AND PROTECTION, STANDARD 701401	L SUM	1	1
70300100	SHORT TERM PAVEMENT MARKING	FOOT	2160	2160
70301000	WORK ZONE PAVEMENT MARKING REMOVAL	SO FT	713	713
* 78000400	THERMOPLASTIC PAVEMENT MARKING - LINE 6"	FOOT	53930	53930
X0323583	SPEED INDICATOR SIGN	CAL DA	75	75
X7D10410	SPEED DISPLAY TRAILER	CAL MO	2.5	2.5
Z0076600	TRAINEES	HOOR	0	

\* SPECIALTY ITEM

FILE NAME :	USER NAME : vedmore_jb	DESIGNED -	REVISED -	<b>STATE OF ILLINOIS</b>	<b>SUMMARY OF QUANTITIES</b>	F.A.I. RTE.	SECTION	COUNTY	TOTAL SHEETS	SHEET NO.
o:\pwork\pvidot\vedmore_jb\0366796\0878908-shr-plen.dgn		DRAWN -	REVISED -	<b>DEPARTMENT OF TRANSPORTATION</b>	SCALE:	55/70	60-(6,7,8,9,10),60-(1,2)-3	MADISON	9	3
PLOT SCALE * 100.0000 ** 1/4"		CHECKED -	REVISED -		SHEET OF SHEETS					
PLOT DATE * 3/20/2014		DATE -	REVISED -		STA. TO STA.	ILLINOIS FED. AID PROJECT				
						CONTRACT NO. 76688				

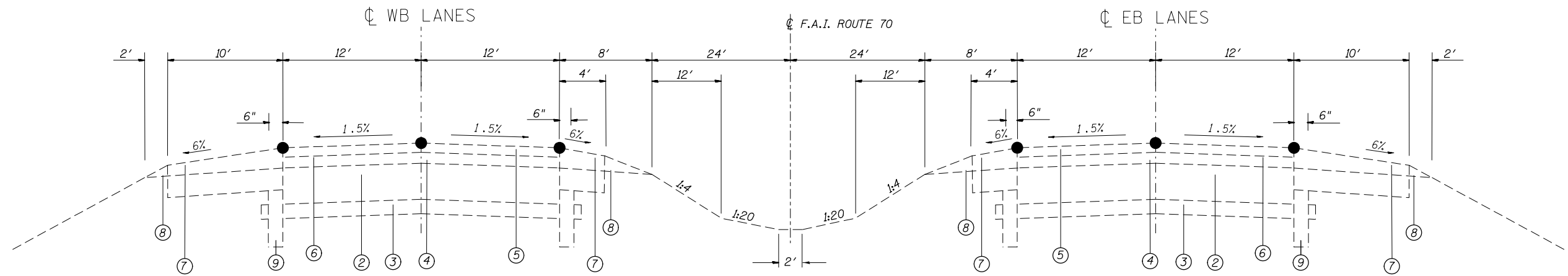


F.A.I. ROUTE 55/70 TYPICAL SECTION

LEGEND FOR I-55/70

- ① EXISTING PCC PAVEMENT 10"
- ② EXISTING HOT-MIX ASPHALT SURFACE
- ③ EXISTING HOT MIX-ASPHALT SHOULDER
- ④ EXISTING SUBBASE
- ⑤ EXISTING PIPE UNDERDRAIN
- PROPOSED ROUTING & FILLING

FILE NAME = c:\pwork\pwork\wedmore_jb\d0366796\d076g98-sht-pln.dgn	USER NAME = wedmore_jb	DESIGNED -	REVISED -	<b>STATE OF ILLINOIS DEPARTMENT OF TRANSPORTATION</b>	<b>TYPICAL SECTIONS</b>				F.A.I. RTE.	SECTION	COUNTY	TOTAL SHEETS	SHEET NO.
	DRAWN -	REVISED -	55/70						60-(6,7,8,9,10)I,60-(1,2)I-3	MADISON	9	4	
	PLOT SCALE = 100.0000' / 1in.	CHECKED -	REVISED -		SCALE:      SHEET NO.    OF    SHEETS    STA.            TO STA.				FED. ROAD DIST. NO.    ILLINOIS FED. AID PROJECT				
	PLOT DATE = 3/28/2014	DATE -	REVISED -						<b>CONTRACT NO. 76G88</b>				

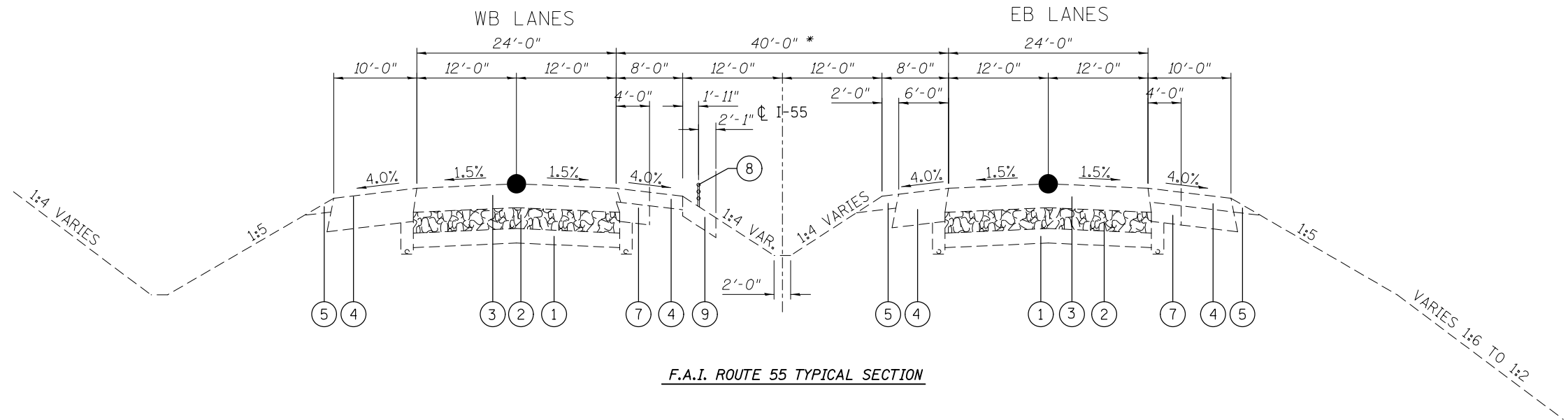


F.A.I. ROUTE 70 TYPICAL SECTION

LEGEND FOR I-70

- ① EXISTING P.C.C PAVEMENT
- ② EXISTING CONTINUOUSLY REINFORCED P.C.C. PAVEMENT, 8"
- ③ EXISTING STABILIZED SUB-BASE, 4"
- ④ EXISTING HMA RESURFACING, 3 1/2"
- ⑤ EXISTING HMA CONC. SURFACE COURSE SUPERPAVE, MIX D,CL I, TYPE, 1 1/2"
- ⑥ EXISTING HMA CONC. BINDER COURSE SUPERPAVE, MIX B, CL I, TYPE I, 2"
- ⑦ EXISTING HMA SHOULDERS
- ⑧ EXISTING AGGREGATE SHOULDER, TYPE B
- ⑨ EXISTING PIPE UNDERDRAINS
- PROPOSED ROUTING & FILLING

FILE NAME =	USER NAME = wedmore_jb	DESIGNED -	REVISED -	<b>STATE OF ILLINOIS DEPARTMENT OF TRANSPORTATION</b>	<b>TYPICAL SECTIONS</b>				F.A.I. RTE.	SECTION	COUNTY	TOTAL SHEETS	SHEET NO.
et:\pw\work\p\dot\wedmore_jb\d0366796\d076g98-sht-pln.dgn		DRAWN -	REVISED -		55/70	60-(6,7,8,9,10)I,60-(1,2)I-3	MADISON	9	5				
	PLOT SCALE = 100.0000' / in.	CHECKED -	REVISED -						<b>CONTRACT NO. 76G88</b>				
	PLOT DATE = 3/28/2014	DATE -	REVISED -		SCALE:	SHEET NO.	OF SHEETS	STA.	TO STA.	FED. ROAD DIST. NO.	ILLINOIS FED. AID PROJECT		



F.A.I. ROUTE 55 TYPICAL SECTION

LEGEND FOR I-55

- ① EXISTING GRANULAR SUB-BASE 7"
- ② EXISTING RUBBLIZED P.C.C. PAVEMENT 10"
- ③ EXISTING HMA PAVEMENT, 11 1/2" MIN.
- ④ EXISTING HMA SHOULDER
- ⑤ EXISTING AGGREGATE SHOULDER, TYPE A
- ⑥ EXISTING PIPE UNDERDRAINS 6"
- ⑦ EXISTING HMA BASE COURSE 12"
- ⑧ EXISTING HIGH TENSION CABLE MEDIAN BARRIER
- ⑨ EXISTING RIPRAP, CLASS A2 (6" THICK) WITH FILTER FABRIC
- PROPOSED ROUTING & FILLING

FILE NAME =	USER NAME = wedmore_jb	DESIGNED -	REVISED -
et:\pw\work\p\dot\wedmore_jb\d0366796\d876g98-sht-pln.dgn		DRAWN -	REVISED -
	PLOT SCALE = 100.0000' / in.	CHECKED -	REVISED -
	PLOT DATE = 3/28/2014	DATE -	REVISED -

STATE OF ILLINOIS  
DEPARTMENT OF TRANSPORTATION

TYPICAL SECTIONS

SCALE: SHEET NO. OF SHEETS STA. TO STA.

F.A.I. RTE.	SECTION	COUNTY	TOTAL SHEETS	SHEET NO.
55/70	60-(6,7,8,9,10)I,60-(1,2)I-3	MADISON	9	6
FED. ROAD DIST. NO. ILLINOIS FED. AID PROJECT			CONTRACT NO. 76G88	

CRACK SEALING SCHEDULE 01								
LOCATION				NUMBER OF LONGITUDINAL LINES	TRANSVERSE JOINT LENGTH FOOT	CRACK ROUTING (PAVEMENT) FOOT	CRACK FILLING POUND	COMMENT
MI. STA.	TO	MI. STA.	DIRECTION					
I-55/70								
8.122	TO	8.179	SB	2		602	198.6	3 LANES/2 CENTERLINES
8.179	TO	8.232	SB		72	72	23.8	BRIDGE OMISSION SN 060-0011
8.232	TO	8.680	SB	2		4731	1561.2	3 LANES/2 CENTERLINES
8.680	TO	9.260	SB	3		9187	3031.8	4 LANES/3 CENTERLINES
9.260	TO	10.515	SB	2		13253	4373.4	3 LANES/2 CENTERLINES
10.515	TO	10.838	SB	1		1705	562.8	2 LANES/1 CENTERLINE
10.838	TO	10.892	SB		48	48	15.8	BRIDGE OMISSION SN 060-0013
10.892	TO	11.394	SB	1		2651	874.7	2 LANES/1 CENTERLINE
11.394	TO	11.448	SB		48	48	15.8	BRIDGE OMISSION SN 060-0015
11.448	TO	12.975	SB	1		8063	2660.6	2 LANES/1 CENTERLINE
12.975	TO	13.014	SB		48	48	15.8	BRIDGE OMISSION SN 060-0017
13.014	TO	16.079	SB	1		16183	5340.5	2 LANES/1 CENTERLINE
16.079	TO	16.107	SB		48	48	15.8	BRIDGE OMISSION SN 060-0019
16.107	TO	17.820	SB	1		9045	2984.7	2 LANES/1 CENTERLINE
17.820	TO	17.895	SB		48	48	15.8	CONCRETE PATCH OMISSION @ IL 162
17.895	TO	18.055	SB	1		845	278.8	2 LANES/1 CENTERLINE
18.055	TO	18.537	SB	2		5090	1679.7	3 LANES/2 CENTERLINES
8.375	TO	8.490	NB	2		1214	400.8	3 LANES/2 CENTERLINES
8.490	TO	8.414	NB		72	72	23.8	BRIDGE OMISSION SN 060-0010
8.414	TO	8.827	NB	2		4361	1439.2	3 LANES/2 CENTERLINES
8.827	TO	9.268	NB	3		6985	2305.2	4 LANES/3 CENTERLINES
9.268	TO	11.069	NB	2		19019	6276.1	3 LANES/2 CENTERLINES
11.069	TO	11.130	NB		72	72	23.8	BRIDGE OMISSION SN 060-0012
11.130	TO	11.379	NB	2		2629	867.7	3 LANES/2 CENTERLINES
11.379	TO	11.675	NB	1		1563	515.8	2 LANES/1 CENTERLINE
11.675	TO	11.722	NB		48	48	15.8	BRIDGE OMISSION SN 060-0014
11.722	TO	13.213	NB	1		7872	2597.9	2 LANES/1 CENTERLINE
13.213	TO	13.247	NB		48	48	15.8	BRIDGE OMISSION SN 060-0016
13.247	TO	16.304	NB	1		16141	5326.5	2 LANES/1 CENTERLINE
16.304	TO	16.332	NB		48	48	15.8	BRIDGE OMISSION SN 060-0018
16.332	TO	18.073	NB	1		9192	3033.5	2 LANES/1 CENTERLINE
18.073	TO	18.148	NB		48	48	15.8	CONCRETE PATCH OMISSION @ IL 162
18.148	TO	18.400	NB	1		1331	439.1	2 LANES/1 CENTERLINE
18.400	TO	18.930	NB	2		5597	1846.9	3 LANES/2 CENTERLINES
SUB-TOTAL THIS SCHEDULE						147907	48809	

CRACK SEALING SCHEDULE 02								
LOCATION				NUMBER OF LONGITUDINAL LINES	TRANSVERSE JOINT LENGTH FOOT	CRACK ROUTING (PAVEMENT) FOOT	CRACK FILLING POUND	COMMENT
MI. STA.	TO	MI. STA.	DIRECTION					
I-55								
18.537	TO	22.330	SB	1		20027	6608.9	2 LANES/1 CENTERLINE
22.330	TO	22.445	SB		48	48	15.8	CONCRETE PATCH OMISSION @ IL 143
22.445	TO	24.567	SB	1		11204	3697.4	2 LANES/1 CENTERLINE
24.567	TO	24.611	SB		48	48	15.8	BRIDGE OMISSION SN 060-0002
24.611	TO	29.602	SB	1		26352	8696.3	2 LANES/1 CENTERLINE
29.602	TO	29.771	SB		48	48	15.8	CONCRETE PATCH OMISSION @ IL 140
29.771	TO	31.051	SB	1		6758	2230.3	2 LANES/1 CENTERLINE
18.930	TO	22.571	NB	1		19224	6344.1	2 LANES/1 CENTERLINE
22.571	TO	22.686	NB		48	48	15.8	CONCRETE PATCH OMISSION @ IL 143
22.686	TO	24.872	NB	1		11542	3808.9	2 LANES/1 CENTERLINE
24.872	TO	24.865	NB		48	48	15.8	BRIDGE OMISSION SN 060-0004
24.865	TO	29.821	NB	1		26168	8635.3	2 LANES/1 CENTERLINE
29.821	TO	29.990	NB		48	48	15.8	CONCRETE PATCH OMISSION @ IL 140
29.990	TO	31.218	NB	1		6484	2139.7	2 LANES/1 CENTERLINE
I-70								
14.042	TO	14.497	WB	3	2306	14126	4661.6	2 LANES/1 CENTERLINE-2 EDGELINES
14.497	TO	14.617	WB		96	96	31.7	BRIDGE OMISSION SN 060-0022
14.617	TO	16.147	WB	3	7755	47501	15675.3	2 LANES/1 CENTERLINE-2 EDGELINES
16.147	TO	16.177	WB		96	96	31.7	BRIDGE OMISSION SN 060-0024
16.177	TO	16.796	WB	3	3138	19218	6341.8	2 LANES/1 CENTERLINE-2 EDGELINES
14.257	TO	16.147	EB	3	9580	58678	19363.6	2 LANES/1 CENTERLINE-2 EDGELINES
16.147	TO	16.177	EB		96	96	31.7	BRIDGE OMISSION SN 060-0023
16.177	TO	16.790	EB	3	3107	19031	6280.4	2 LANES/1 CENTERLINE-2 EDGELINES
SUB-TOTAL THIS SCHEDULE						286890	94674	
SUB-TOTAL SCHEDULE 01 & 02						434797	143483	
25% ALLOWANCE FOR FAILURES						108699	35871	
GRAND TOTAL						543497	179354	

M A D I S O N C O U N T Y

H A M E L

END I-55 MILE 31.051

END I-55/70 MILE 18.537  
 BEGIN I-55 MILE 18.537  
 BEGIN I-70 MILE 14.042

END I-70 MILE 16.796

P I N O A K

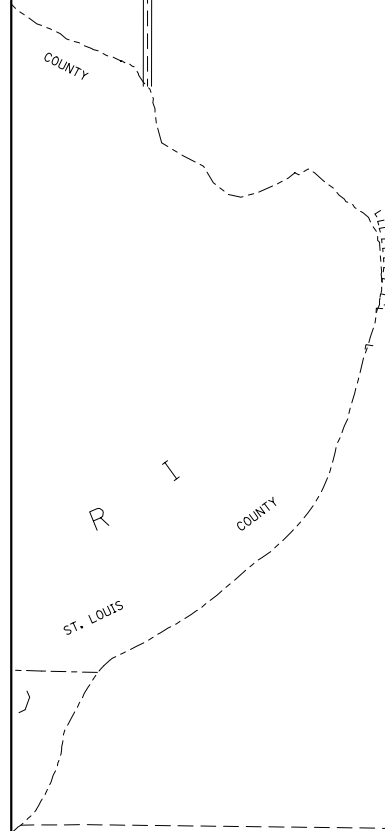
E D W A R D S  
 V I L L E

C O L L I N S -  
 V I L L E

J A R V I S

N A M I O K I

BEGIN I-55/70 MILE 8.122



FILE NAME =	USER NAME = wedmore_jb	DESIGNED -	REVISED -
et:\pw\work\p1dot\wedmore_jb\d0366796\d076g98-sht-pln.dgn		DRAWN -	REVISED -
		CHECKED -	REVISED -
		DATE -	REVISED -

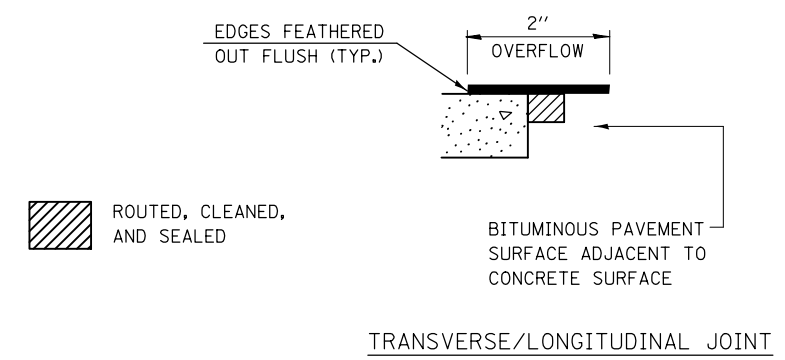
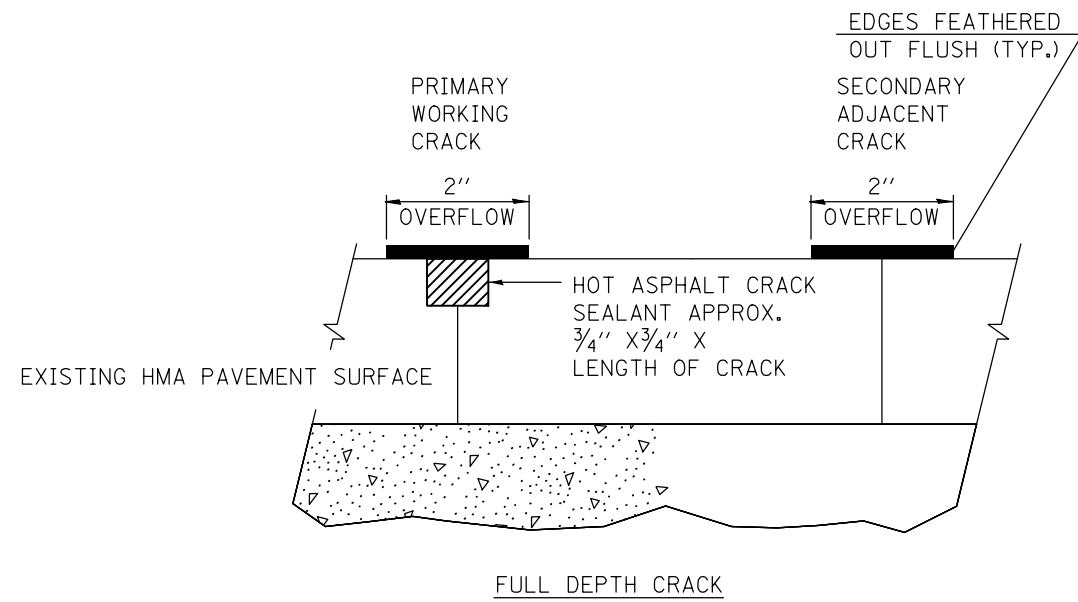
STATE OF ILLINOIS  
 DEPARTMENT OF TRANSPORTATION

LOCATION MAP

SCALE: NONE SHEET NO. OF SHEETS STA. TO STA.

F.A.I. RTE.	SECTION	COUNTY	TOTAL SHEETS	SHEET NO.
55/70	60-(6,7,8,9,10),60-(1,2)I-3	MADISON	9	8
FED. ROAD DIST. NO.		ILLINOIS FED. AID PROJECT		
		CONTRACT NO. 76G88		





CRACK & JOINT SEALING DETAILS

FILE NAME =	USER NAME = wedmore_jb	DESIGNED -	REVISED -	<b>STATE OF ILLINOIS DEPARTMENT OF TRANSPORTATION</b>	<b>CRACK &amp; JOINT SEALING DETAIL</b>				F.A.I. RTE.	SECTION	COUNTY	TOTAL SHEETS	SHEET NO.
et:\pw\work\p\dot\wedmore_jb\d0366796\d076g98-sht-pln.dgn		DRAWN -	REVISED -		55/70	60-(6,7,8,9,10),60-(1,2)I-3	MADISON	9	9				
PLOT SCALE = 100.0000' / in.		CHECKED -	REVISED -		CONTRACT NO. 76C88								
PLOT DATE = 3/28/2014		DATE -	REVISED -		SCALE: NONE	SHEET NO.	OF SHEETS	STA.	TO STA.	FED. ROAD DIST. NO.	ILLINOIS FED. AID PROJECT		