

06-13-14 LETTING ITEM 139

STATE OF ILLINOIS  
DEPARTMENT OF TRANSPORTATION  
DIVISION OF HIGHWAYS

**PROPOSED  
HIGHWAY PLANS**

F.A.P. ROUTE 314/F.A.P. 670 (IL 4)  
SECTION (30,66)I, (108,109,110-2)I-1

**PATCHING  
MADISON COUNTY**

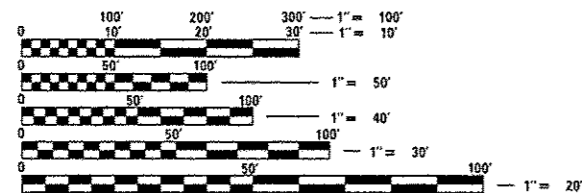
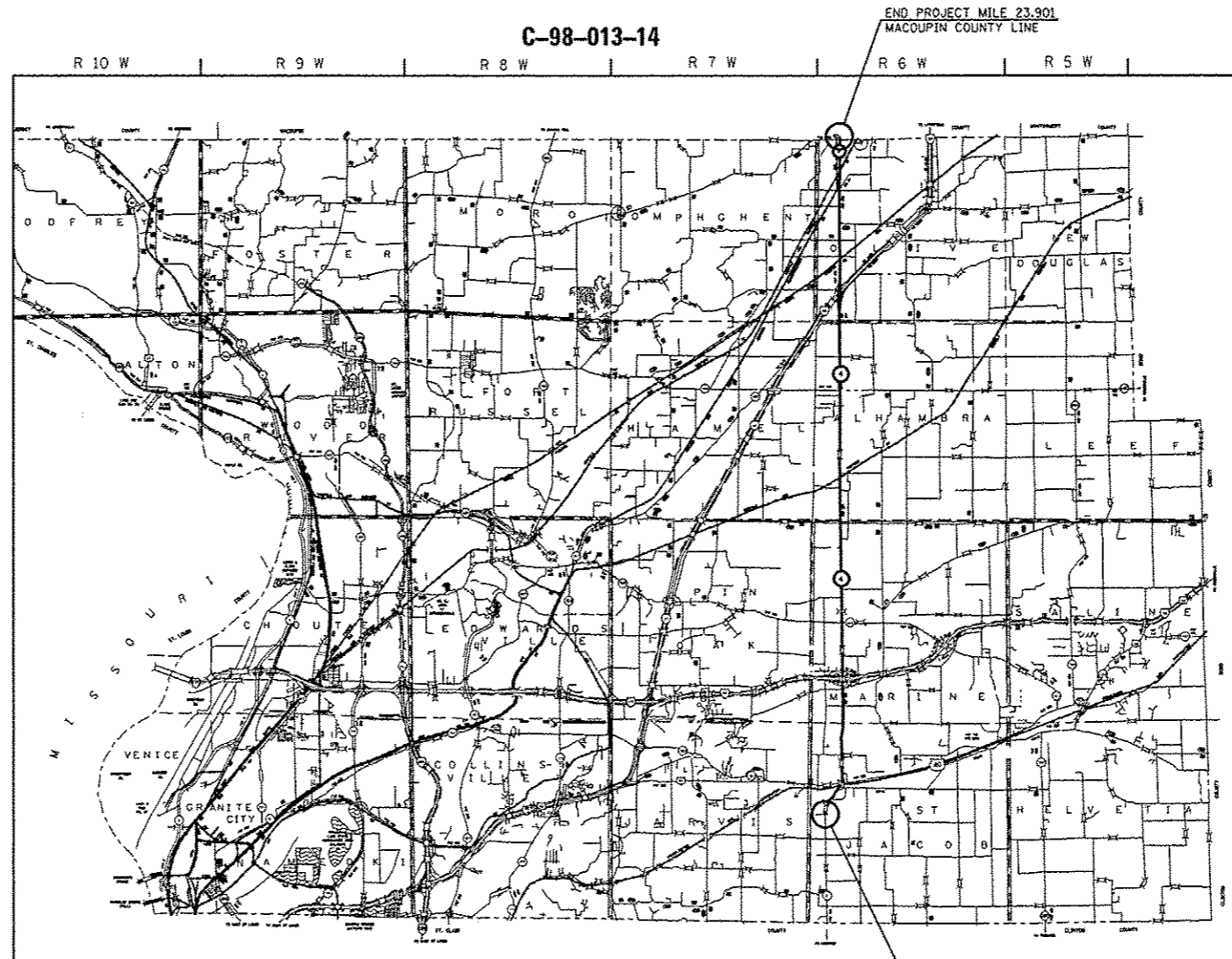
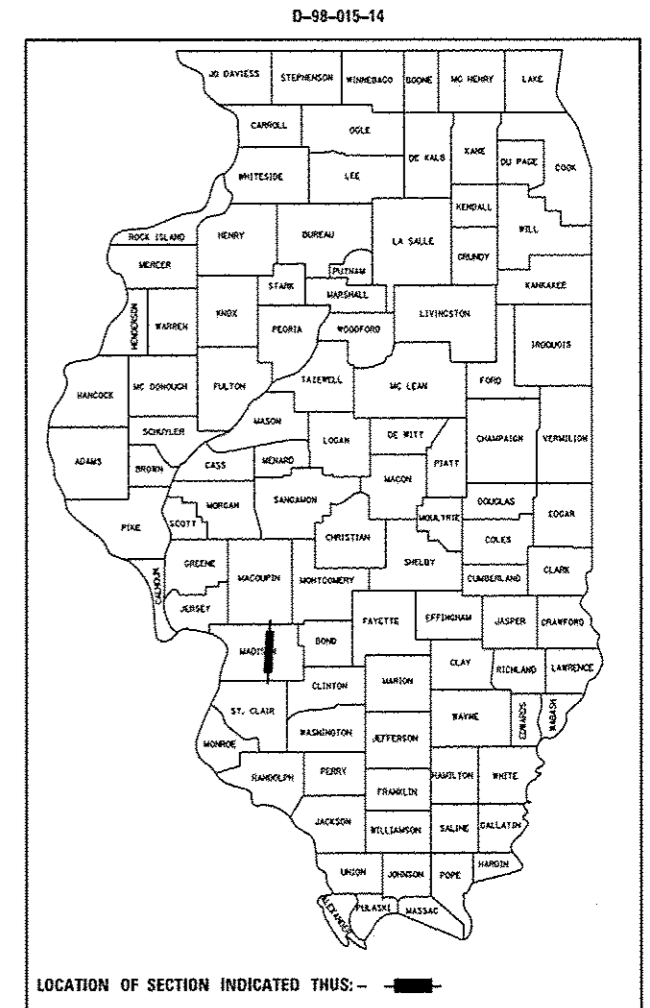
C-98-013-14

F.A.P. RTE.	SECTION	COUNTY	TOTAL SHEETS	SHEET NO.
314/670	(30,66)I, (108,109,110-2)I-1	MADISON	5	1
ILLINOIS			CONTRACT NO. 76G89	

FOR INDEX OF SHEETS, SEE SHEET NO. 2

AADT: IL 4 7,400(2014)/9,000(2034) MU = 12.3% SU = 6.5%

BEGIN IL 4:      LAT. - 38°42'11"N  
                       LONG. - 89°48'36"W  
 END IL 4:        LAT. - 38°59'53"N  
                       LONG. - 89°48'04"W



FULL SIZE PLANS HAVE BEEN PREPARED USING STANDARD ENGINEERING SCALES. REDUCED SIZED PLANS WILL NOT CONFORM TO STANDARD SCALES. IN MAKING MEASUREMENTS ON REDUCED PLANS, THE ABOVE SCALES MAY BE USED.

J.U.L.I.E.  
 JOINT UTILITY LOCATION INFORMATION FOR EXCAVATION  
 1-800-892-0123  
 OR 811

PROJECT ENGINEER: MICHAEL PRITCHETT (618) 346-3180  
DESIGNER: BO WEDMORE (618) 346-3206

CONTRACT NO. 76G89



GROSS LENGTH = 20.606 MILES  
NET LENGTH = 20.606 MILES

BEGIN PROJECT MILE 3.295  
1 MILE SOUTH OF US 40

STATE OF ILLINOIS  
 DEPARTMENT OF TRANSPORTATION  
 DIVISION OF HIGHWAYS

SUBMITTED *May 28 20 14*  
*Jeffrey Z. K...*  
 DEPUTY DIRECTOR OF HIGHWAYS, REGION ENGINEER

*May 9 20 14*  
*John D. Baranzelli, P.E.*  
 ENGINEER OF DESIGN AND ENVIRONMENT

*May 9 20 14*  
*Osber Osman, P.E.*  
 DIRECTOR OF HIGHWAYS, CHIEF ENGINEER

**PRINTED BY THE AUTHORITY  
OF THE STATE OF ILLINOIS**

INDEX OF SHEETS

1. COVER SHEET
2. GENERAL NOTES, INDEX OF SHEETS & HIGHWAY STANDARDS
3. SUMMARY OF QUANTITIES
4. TYPICAL SECTION
5. PATCHING SCHEDULE

GENERAL NOTES

1. ILLINOIS STATE LAW REQUIRES A 48-HOUR NOTICE TO BE GIVEN TO UTILITIES BEFORE DIGGING. FIELD MARKING OF FACILITIES MAY BE OBTAINED BY CONTACTING J.U.L.I.E. (1-800-892-0123 OR 811) OR FOR NON-MEMBERS THE UTILITY COMPANY DIRECTLY.
2. UTILITY INTERFERENCES ARE NOT ANTICIPATED ON THIS CONTRACT. IT SHALL BE THE CONTRACTOR'S RESPONSIBILITY TO COORDINATE HIS CONSTRUCTION ACTIVITIES WITH THE VARIOUS UTILITY OWNERS. ALL POTENTIAL CONFLICTS SHALL BE INVESTIGATED AND REMEDIAL ACTION TAKEN PRIOR TO INTERRUPTION OF THE CONTRACTOR'S PROGRESS. NO ADDITIONAL COST SHALL BE ADDED TO THE CONTRACT RESULTING FROM UTILITY CONFLICTS.
3. NO OVERNIGHT LANE CLOSURES SHALL BE ALLOWED ON THE PROJECT.
4. FLAGGERS SHALL BE PRESENT DURING ALL CLOSURE HOURS INCLUDING LUNCH HOUR AND NO ADDITIONAL COMPENSATION SHALL BE ALLOWED.
5. A QUANTITY OF 42 EACH RAISED REFLECTIVE PAVEMENT MARKER REMOVAL AND 42 EACH RAISED REFLECTIVE PAVEMENT MARKERS HAS BEEN ADDED TO THE PLANS IN ORDER TO HANDLE ANY ENCOUNTERED WITHIN THE PATCH AREA. RAISED REFLECTIVE PAVEMENT MARKER LOCATIONS SHALL BE AS DIRECTED BY THE ENGINEER.
6. THE RESIDENT ENGINEER SHALL DETERMINE EXACT LOCATION WHERE PATCHES ARE TO APPLIED, SINCE THE PLAN LOCATIONS ARE APPROXIMATE.
7. PARTIAL DEPTH PATCHING ESTIMATED APPLICATION RATE : 0.056 TONS/SQ YD
8. A QUANTITY OF 2220 FOOT THERMOPLASTIC PAVEMENT MARKING - LINE 4" HAS BEEN ADDED TO THE PLANS TO REPLACE ANY DISTURBED DURING PATCHING. APPLICATION LOCATIONS SHALL BE DETERMINED BY THE ENGINEER.
9. ALL STRUCTURES ARE OMITTED FROM THE CONTRACT.
10. AN AMOUNT OF 204 FOOT SHORT TERM PAVEMENT MARKING HAS BEEN ADDED TO THE PLANS TO COVER EDGELINES AND CENTERLINE DASHES WHERE PATCHES GREATER THAN 40' IN LENGTH OCCUR. ADDITIONALLY AN AMOUNT OF 68 SQ FT WORK ZONE PAVEMENT MARKING REMOVAL HAS BEEN ADDED TO ACCOUNT FOR REMOVAL OF THE SHORT TERM PAVEMENT MARKING.

STANDARDS

- |           |   |
|-----------|---|
| 000001-06 | STANDARD SYMBOLS, ABBREVIATIONS AND PATTERNS                    |
| 442201-03 | CLASS C AND D PATCHES   |
| 701001-02 | OFF-RD OPERATIONS, 2L, 2W, MORE THAN 15' AWAY                   |
| 701006-05 | OFF-RD OPERATIONS, 2L, 2W, 15' TO 24" FROM PAVEMENT EDGE        |
| 701201-04 | LANE CLOSURE, 2L, 2W, DAY ONLY, FOR SPEEDS ≥ 45 MPH             |
| 701311-03 | LANE CLOSURE 2L, 2W MOVING OPERATIONS-DAY ONLY                  |
| 701336-06 | LANE CLOSURE, 2L, 2W, WORK AREAS IN SERIES, FOR SPEEDS ≥ 45 MPH |
| 701901-03 | TRAFFIC CONTROL DEVICES   |
| 780001-04 | TYPICAL PAVEMENT MARKINGS                                       |

11. THE ILLINOIS DEPARTMENT OF TRANSPORTATION STRONGLY ENCOURAGES THE PRIME CONTRACTOR AND THEIR APPROVED SUB-CONTRACTORS TO HIRE MINORITY, WOMEN AND DISADVANTAGED INDIVIDUALS FROM ITS FEDERALLY FUNDED HIGHWAY CONSTRUCTION CAREERS TRAINING PROGRAM (HCCTP) TO HELP MEET WORKFORCE AND TRAINEE GOALS. THIS PROGRAM IS TRAINING MINORITIES, WOMEN AND DISADVANTAGED INDIVIDUALS IN HIGHWAY CONSTRUCTION-RELATED SKILLS, E.G., MATH FOR THE TRADES, JOB READINESS, TECHNICAL SKILLS COURSEWORK (CARPENTRY, CONCRETE FLATWORK, BLUEPRINT READING, SITE PLANS, SITE WORK, TOOLS USE, ETC.) AND OSHA 10 HOUR CERTIFICATION, TO PREPARE THEM FOR A CAREER IN THE HIGHWAY CONSTRUCTION TRADES. GRADUATES ARE WELL-TRAINED AND READY TO BECOME PRODUCTIVE ENTRY-LEVEL CONSTRUCTION WORKERS. PLEASE CONTACT THE DISTRICT 8 EEO OFFICE AT 618-346-3360 AND/OR THE HCCTP COORDINATOR AT 618/874-6528 TO LEARN MORE ABOUT THE PROGRAM AND FOR ASSISTANCE IN MEETING WORKFORCE AND TRAINEE GOALS.

MIXTURE REQUIREMENTS

ROUTE	FAP 314/670 (IL 4)
SECTION	(30,66)I. (108,109,110-2)I-1
COUNTY	MADISON
CONTRACT	76G89

DESCRIPTION:	PATCHING ON IL 4 FROM MACOUPIN COUNTY LINE TO 1 MILE SOUTH OF US 40.
--------------	--

ADT (Construction Yr):	3900
MU%:	11
SU%:	3.1
20 YR. ESAL'S:	2.41

MIXTURE USE	PATCHING	Partial Depth Patch			
AC/PG	PG 64-22	PG 64-22			
RAP % (MAX)	SEE SPEC	SEE SPEC			
DESIGN AIR VOIDS	4.0% @ Ndes=70	4.0% @ Ndes=70			
MIX COMPOSITION					
GRADATION MIXTURE	IL 19 OFG				
FRICTION AGG	MIXTURE "B"	MIXTURE "D"			
QUALITY MGMT PROGRAM	QC/QA	QC/QA			

Plan quantities for Bituminous Concrete Surface Course items are calculated using a unit weight of 112 lb/sq yd/in (52.3 kg/sq m/25 mm thickness).

FILE NAME =	USER NAME = vedmorejb	DESIGNED -	REVISED -	<b>STATE OF ILLINOIS DEPARTMENT OF TRANSPORTATION</b>	<b>GENERAL NOTES, INDEX OF SHEETS &amp; LIST OF STANDARDS</b>	F.A.P. RTE.	SECTION	COUNTY	TOTAL SHEETS	SHEET NO.
c:\pwork\pwork\vedmorejb\d0366889\d0366889-ehi-plan.dgn	DRAWN -	REVISED -	314/670			(30,66)I. (108,109,110-2)I-1	MADISON	5	2	
PLOT SCALE = 100:0000' / 1"	CHECKED -	REVISED -	CONTRACT NO. 76G89							
PLOT DATE = 3/28/2014	DATE -	REVISED -	SCALE:			SHEET NO. OF SHEETS	STA. TO STA.	FED. ROAD DIST. NO.	ILLINOIS FED. AID PROJECT	

# SUMMARY OF QUANTITIES

CODE NO.	ITEM	UNIT	TOTAL QUANTITY	CONSTR. CODE	
				100% STATE	
				ROADWAY	
				0005	RURAL
44201789	CLASS D PATCHES, TYPE II, 12 INCH	SQ YD	186	186	
44201794	CLASS D PATCHES, TYPE III, 12 INCH	SQ YD	78	78	
44201796	CLASS D PATCHES, TYPE IV, 12 INCH	SQ YD	316	316	
67000400	ENGINEER'S FIELD OFFICE, TYPE A	CAL MO	3	3	
67100100	MOBILIZATION	L SUM	1	1	
70100450	TRAFFIC CONTROL AND PROTECTION, STANDARD 701201	L SUM	1	1	
70100600	TRAFFIC CONTROL AND PROTECTION, STANDARD 701336	L SUM	1	1	
70300100	SHORT TERM PAVEMENT MARKING	FOOT	204	204	
70301000	WORK ZONE PAVEMENT MARKING REMOVAL	SQ FT	68	68	
* 78000200	THERMOPLASTIC PAVEMENT MARKING - LINE 4"	FOOT	2220	2220	
* 78100100	RAISED REFLECTIVE PAVEMENT MARKER	EACH	42	42	
X4406230	PARTIAL DEPTH REMOVAL, TYPE II, 3"	SQ YD	237	237	
X4406430	PARTIAL DEPTH REMOVAL, TYPE III, 3"	SQ YD	261	261	
X4406630	PARTIAL DEPTH REMOVAL, TYPE IV, 3"	SQ YD	2677	2677	

CODE NO.	ITEM	UNIT	TOTAL QUANTITY	CONSTR. CODE	
				100% STATE	
				ROADWAY	
				0005	RURAL
X4421000	PARTIAL DEPTH PATCHING	TON	533.4	533.4	
Z0076600	TRAINEES	HOOR			

\* SPECIALTY ITEM

FILE NAME =	USER NAME = wadmora.jb	DESIGNED -	REVISED -	<b>STATE OF ILLINOIS DEPARTMENT OF TRANSPORTATION</b>	<b>SCHEDULE OF QUANTITIES</b>				F.A.P. RTE.	SECTION	COUNTY	TOTAL SHEETS	SHEET NO.
cr:\pvc\work\pndoc\wadmora.jb\0366889\0376997-akt-plan.dgn	DRAWN -	REVISED -	314/670						(30,66)I, (108,109,110-21)-1	MADISON	5	3	
PLOT SCALE = 100.0000' / 1" =	CHECKED -	REVISED -	CONTRACT NO. 76C89										
PLOT DATE = 3/28/2014	DATE -	REVISED -	SCALE:		SHEET	OF	SHEETS	STA.	TO	STA.	[ILLINOIS] FED. AID PROJECT		



PAVEMENT PATCHING SCHEDULE

LOCATION				DIMENSIONS		PARTIAL DEPTH REMOVAL, TYPE II, 3"	PARTIAL DEPTH REMOVAL, TYPE III, 3"	PARTIAL DEPTH REMOVAL, TYPE IV, 3"	PARTIAL DEPTH PATCHING	CLASS D PATCHES, TYPE II, 12"	CLASS D PATCHES, TYPE III, 12"	CLASS D PATCHES, TYPE IV, 12"
STATION	TO	STATION	DIRECTION	LENGTH	WIDTH	SQ YD	SQ YD	SQ YD	TON	SQ YD	SQ YD	SQ YD
3.732			NB	6	12					8		
3.732			SB	6	12					8		
4.334			SB	6	12					8		
4.392			SB	8	12					11		
4.452			SB	6	12					8		
4.469			SB	6	12					8		
4.471			SB	6	12					8		
4.482			SB	6	12					8		
4.486			SB	6	12					8		
4.490			SB	6	12					8		
4.502			SB	6	12					8		
7.436			NB	12	12						16	
7.436			SB	12	12						16	
10.510	*		NB	12	12	16			2.7			
10.510	*		SB	12	12	16			2.7			
10.635			NB	12	12	16			2.7			
10.635			SB	12	12	16			2.7			
10.699			NB	6	12					8		
10.699			SB	6	12					8		
10.720			NB	10	12					14		
10.720			SB	10	12					14		
10.868			NB	6	12	8			1.3			
10.868			SB	6	12	8			1.3			
10.879			NB	6	12	8			1.3			
10.879			SB	6	12	8			1.3			
10.895			NB	6	12	8			1.3			
10.895			SB	6	12	8			1.3			
10.926			NB	6	12					8		
10.926			SB	6	12					8		
10.945			NB	6	12	8			1.3			
10.945			SB	6	12	8			1.3			
11.186			SB	6	12	8			1.3			
11.570			NB	6	12	8			1.3			
11.690			NB	8	12	11			1.8			
11.690			SB	8	12	11			1.8			
13.676			NB	60	12						20	80
13.676			SB	15	12							
14.054			SB	8	12					11		
14.083			SB	60	12		80		13.4			
14.143			SB	30	12	40			6.7			
14.150			SB	30	12							40
14.156			NB	40	12							54
14.176			SB	12	12						16	
16.118	16.237		SB	629	12			839	141.0			
16.363	16.513		SB	793	12			1058	177.7			
16.435			SB	25	12							34
16.531			SB	50	12							67
17.130	17.191		SB	323	12			431	72.4			
19.375			SB	60	12		80		13.4			
21.952			SB	50	12		67		11.3			
SUBTOTALS						206	227	2328	463.8	162	68	275
15% ALLOWANCE**						31	34	349	69.6	24	10	41
TOTALS						237	261	2677	533.4	186	78	316

\*SKEW PATCH TO ALIGN WITH UNDERLYING CULVERT.

\*\* AN ADDITIONAL 10% HAS BEEN ADDED TO THE FINAL PATCHING QUANTITY TO ALLOW FOR UNFORSEEN DETERIORATION DISCOVERED DURING THE PATCHING PROCESS.

FILE NAME =	USER NAME = wedmore.jb	DESIGNED -	REVISED -	<b>STATE OF ILLINOIS DEPARTMENT OF TRANSPORTATION</b>	<b>PATCHING SCHEDULE</b>	F.A.P. RTE.	SECTION	COUNTY	TOTAL SHEETS	SHEET NO.
et:\pw\work\p\dot\wedmore.jb\d0366809\d876g99-sht-plen.dgn	DRAWN -	REVISED -	314/670			(30,66)I, (108,109,110-2)I-1	MADISON	5	5	
PLOT SCALE = 100.0000' / in.	CHECKED -	REVISED -	CONTRACT NO. 76C89							
PLOT DATE = 3/28/2014	DATE -	REVISED -	FED. ROAD DIST. NO.			ILLINOIS	FED. AID PROJECT			
						SCALE:	SHEET NO.	OF SHEETS	STA.	TO STA.