

F.A.P. RTE.	SECTION	COUNTY	TOTAL SHEETS	SHEET NO.
310	(55,56)RS-3	GREENE	15	1
FED. ROAD DIST. NO.	ILLINOIS	CONTRACT NO. 76H12		

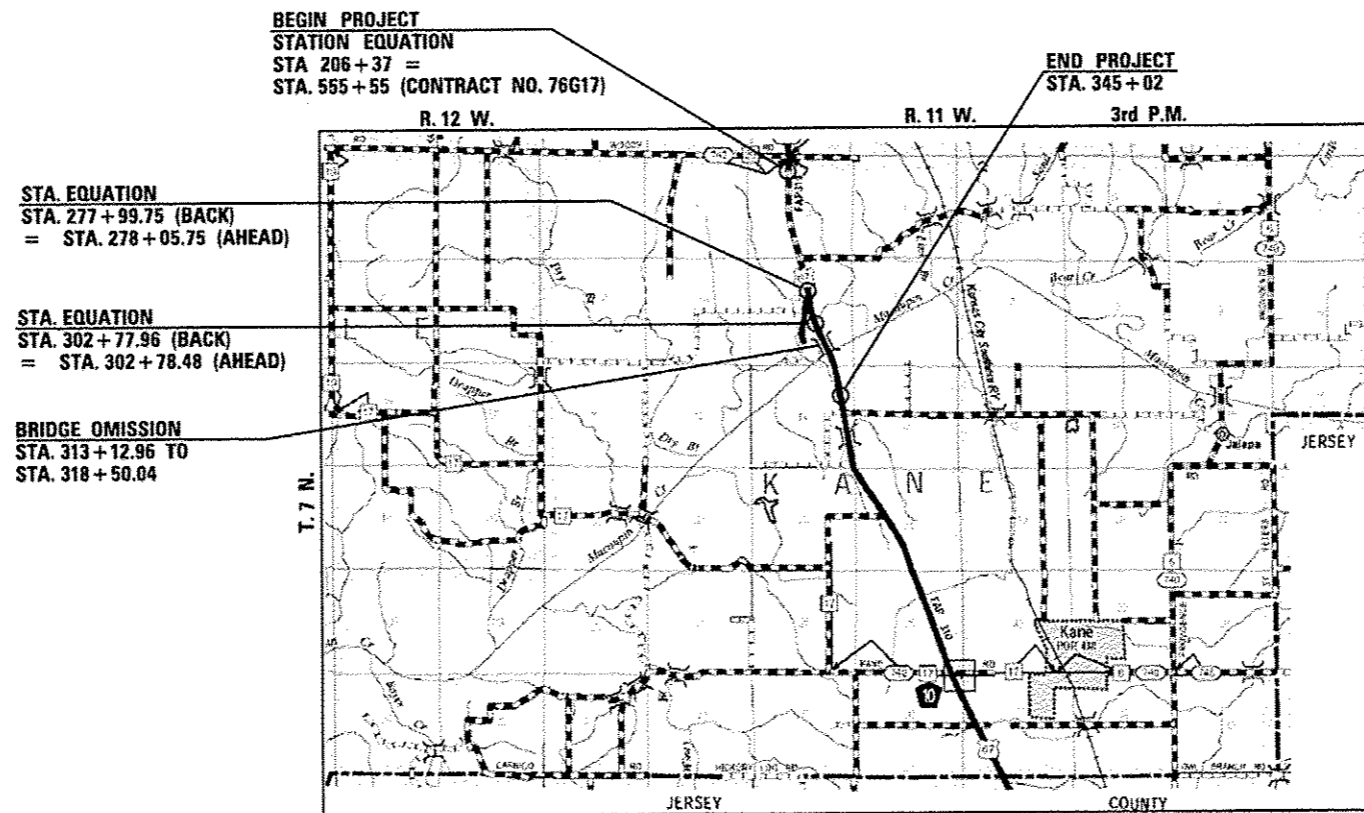
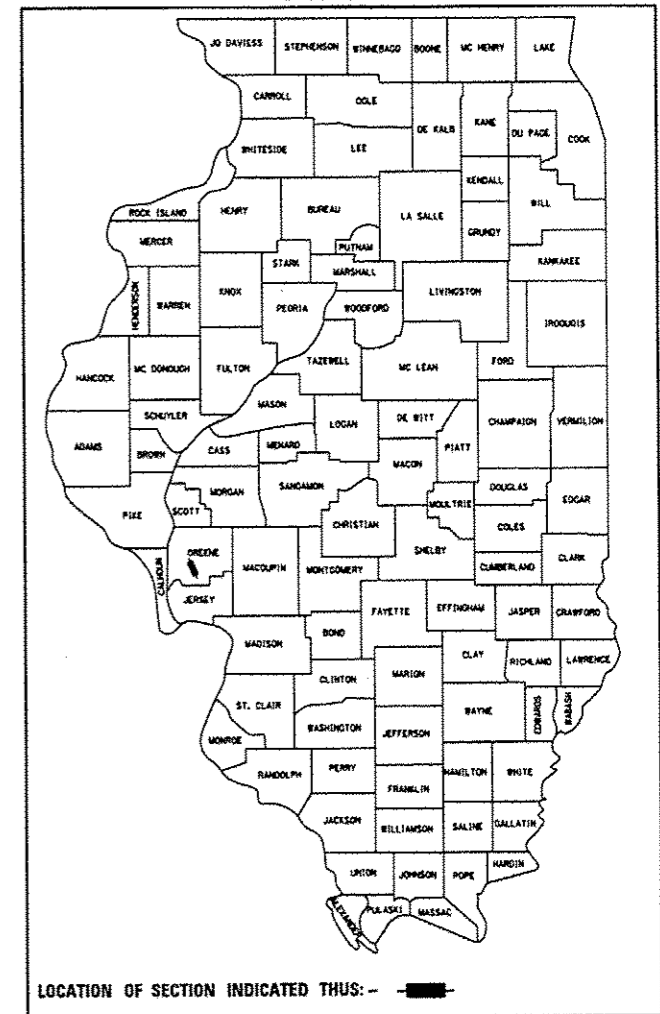
STATE OF ILLINOIS  
DEPARTMENT OF TRANSPORTATION  
DIVISION OF HIGHWAYS

**PROPOSED  
HIGHWAY PLANS**

F.A.P. 310 (US 67)  
SECTION (55,56)RS-3  
RESURFACING - 3P  
GREENE COUNTY  
C-98-037-14

FOR INDEX OF SHEETS, SEE SHEET NO. 2

D-98-036-14

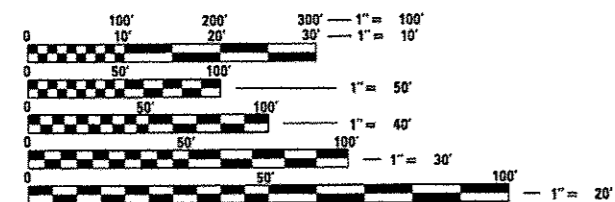


STA. EQUATION  
STA. 277+99.75 (BACK)  
= STA. 278+05.75 (AHEAD)

STA. EQUATION  
STA. 302+77.96 (BACK)  
= STA. 302+78.48 (AHEAD)

BRIDGE OMISSION  
STA. 313+12.96 TO  
STA. 318+50.04

FROM 1100 N. TO 750 N.  
2013 ADT = 4500 (ACTUAL)  
2014 ADT = 4550 (ESTIMATED)  
2034 ADT = 5500 (ESTIMATED)  
SU = 3.6% MU = 5.6%



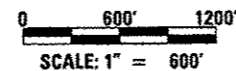
FULL SIZE PLANS HAVE BEEN PREPARED USING STANDARD ENGINEERING SCALES. REDUCED SIZED PLANS WILL NOT CONFORM TO STANDARD SCALES. IN MAKING MEASUREMENTS ON REDUCED PLANS, THE ABOVE SCALES MAY BE USED.

J.U.L.I.E.  
JOINT UTILITY LOCATION INFORMATION FOR EXCAVATION  
1-800-892-0123  
OR 811

BEGIN:	END:
LAT. 39.26194	LAT. 39.22699
LONG. -90.40151	LONG. -90.39219

**LOCATION MAP**

GROSS LENGTH OF PROJECT = 13865.00 FEET = 2.626 MILES  
NET LENGTH OF PROJECT = 13321.40 FEET = 2.523 MILES



PROJECT ENGINEER: PATTI LEBEAU 618-346-3179  
PROJECT MANAGER: BILLIE OWEN 618-346-3209

CONTRACT NO. 76H12

Allen Henderson & Associates, Inc.  
Civil and Structural Engineers Springfield, IL.  
62703 Phone: (217)644-8033 IL Design Firm  
No. 184-001907

Christopher P. Rogals PE  
EXPIRATION: 11/30/2015

STATE OF ILLINOIS  
DEPARTMENT OF TRANSPORTATION  
DIVISION OF HIGHWAYS

SUBMITTED April 11, 2014  
Deputy Director of Highways, Region Five Engineer  
May 9, 2014  
John D. Boranzoli, P.E.  
acting ENGINEER OF DESIGN AND ENVIRONMENT  
May 9, 2014  
Omer Osman, P.E.  
DIRECTOR OF HIGHWAYS, CHIEF ENGINEER

**PRINTED BY THE AUTHORITY  
OF THE STATE OF ILLINOIS**