

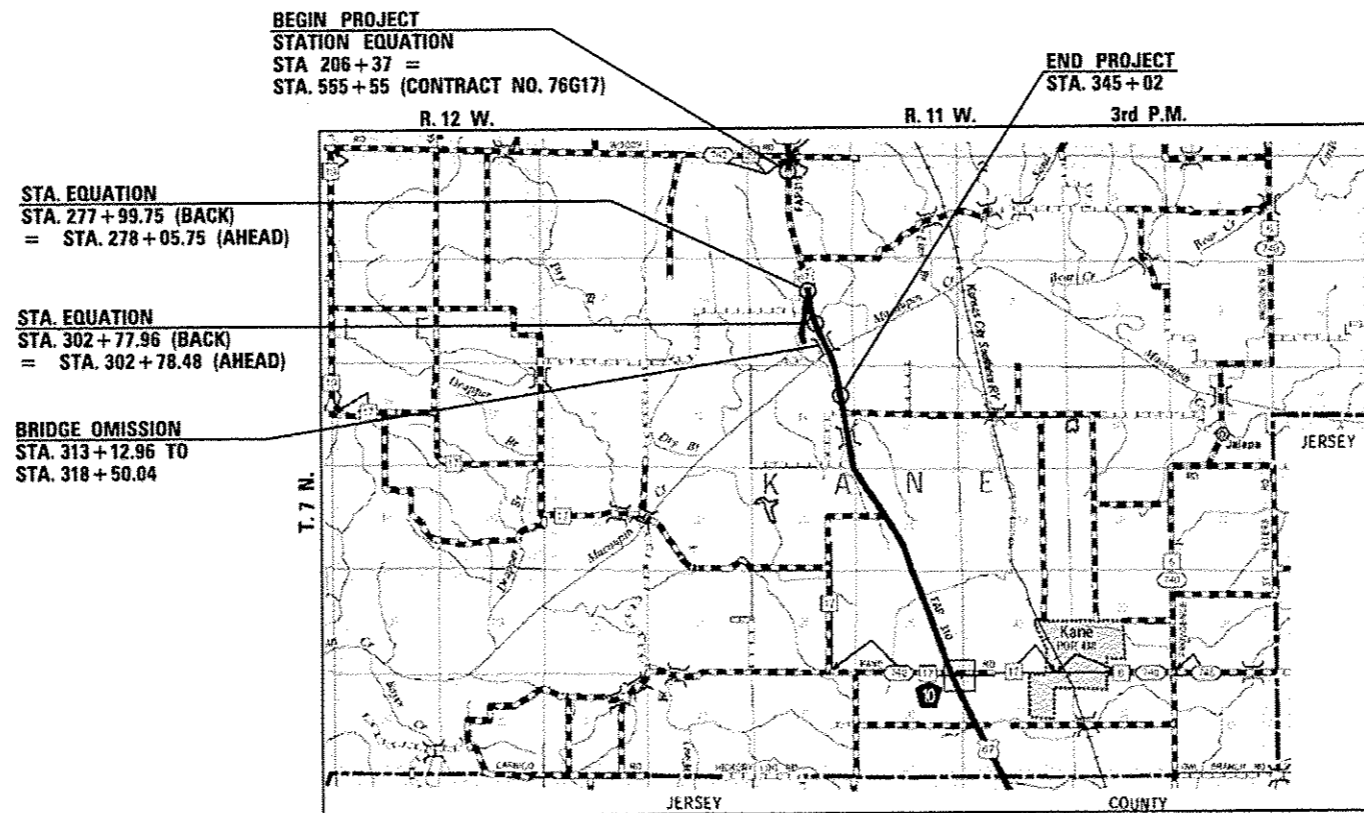
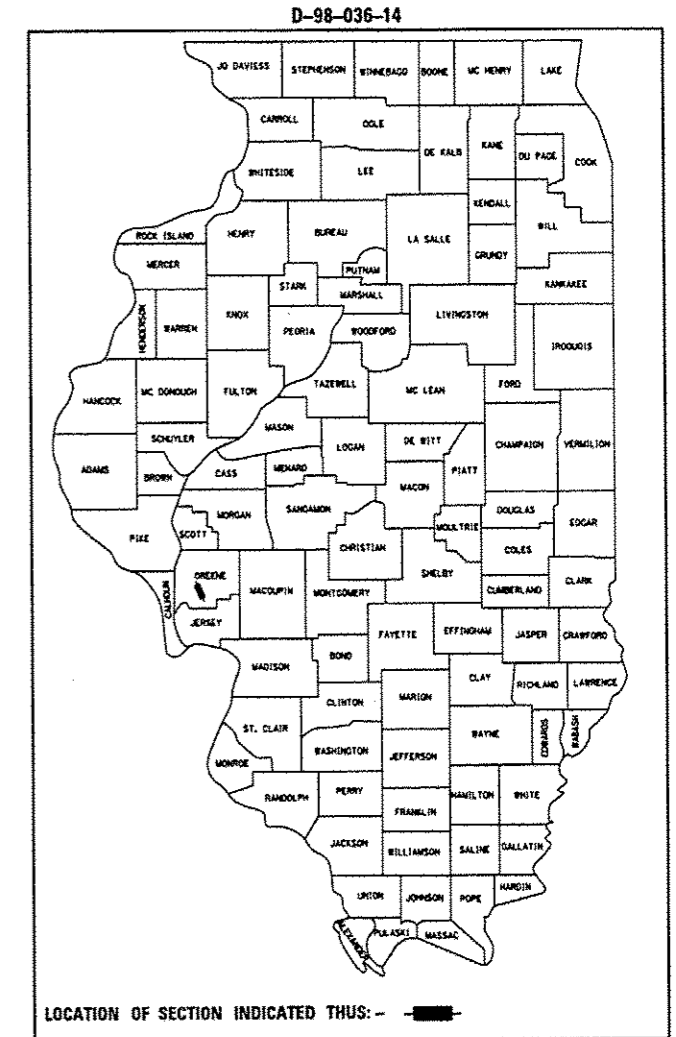
STATE OF ILLINOIS
DEPARTMENT OF TRANSPORTATION
DIVISION OF HIGHWAYS

**PROPOSED
HIGHWAY PLANS**

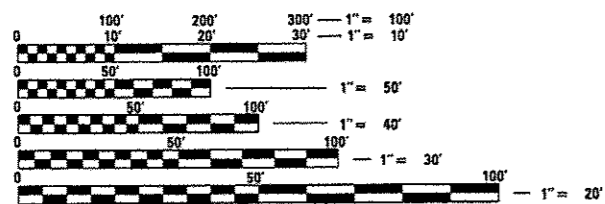
F.A.P. 310 (US 67)
SECTION (55,56)RS-3
RESURFACING - 3P
GREENE COUNTY
C-98-037-14

FOR INDEX OF SHEETS, SEE SHEET NO. 2

F.A.P. RTE.	SECTION	COUNTY	TOTAL SHEETS	SHEET NO.
310	(55,56)RS-3	GREENE	15	1
FED. ROAD DIST. NO.		ILLINOIS	CONTRACT NO. 76H12	



FROM 1100 N. TO 750 N.
2013 ADT = 4500 (ACTUAL)
2014 ADT = 4550 (ESTIMATED)
2034 ADT = 5500 (ESTIMATED)
SU = 3.6% MU = 5.6%



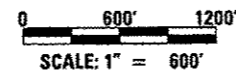
FULL SIZE PLANS HAVE BEEN PREPARED USING STANDARD ENGINEERING SCALES. REDUCED SIZED PLANS WILL NOT CONFORM TO STANDARD SCALES. IN MAKING MEASUREMENTS ON REDUCED PLANS, THE ABOVE SCALES MAY BE USED.

J.U.L.I.E.
JOINT UTILITY LOCATION INFORMATION FOR EXCAVATION
1-800-892-0123
OR 811

BEGIN:	END:
LAT. 39.26194	LAT. 39.22699
LONG. -90.40151	LONG. -90.39219

LOCATION MAP

GROSS LENGTH OF PROJECT = 13865.00 FEET = 2.626 MILES
NET LENGTH OF PROJECT = 13321.40 FEET = 2.523 MILES



PROJECT ENGINEER: PATTI LEBEAU 618-346-3179
PROJECT MANAGER: BILLIE OWEN 618-346-3209

CONTRACT NO. 76H12

Allen Henderson & Associates, Inc.
Civil and Structural Engineers Springfield, IL.
62703 Phone: (217)644-8033 IL Design Firm
No. 184-001907

Christopher P. Rogals PE
EXPIRATION: 11/30/2015

STATE OF ILLINOIS
DEPARTMENT OF TRANSPORTATION
DIVISION OF HIGHWAYS

SUBMITTED April 11, 2014
Deputy Director of Highways, Region Five Engineer
John D. Boranzoli, P.E.
acting ENGINEER OF DESIGN AND ENVIRONMENT
May 9, 2014
Omer Osman, P.E.
DIRECTOR OF HIGHWAYS, CHIEF ENGINEER

**PRINTED BY THE AUTHORITY
OF THE STATE OF ILLINOIS**

GENERAL NOTES

1. ILLINOIS STATE LAW REQUIRES A 48-HOUR NOTICE BE GIVEN TO ALL UTILITIES WITHIN THE PROJECT AREA BEFORE DIGGING. FIELD MARKING OF FACILITIES MAY BE OBTAINED BY CONTACTING J.U.L.I.E. OR FOR NON-MEMBERS, THE UTILITY COMPANY DIRECTLY. AGENCIES KNOWN TO HAVE FACILITIES WITHIN THE PROJECT AREA ARE AS FOLLOWS.

UTILITY	ABOVE GROUND	BELOW GROUND
• FRONTIER NORTH, INC.	X	X
• GREENE COUNTY RURAL WATER DISTRICT		X
• GREENE COUNTY PARTNERS, INC.	X	X
• ILLINOIS RURAL ELECTRIC COOPERATIVE	X	X

MEMBERS OF J.U.L.I.E. CALL TOLL FREE (800) 892-0123 OR 811 AND ARE INDICATED BY •. NON-J.U.L.I.E. MEMBERS MUST BE NOTIFIED INDIVIDUALLY.

- THE CONTRACTOR AND THE ENGINEER SHALL BE AWARE THAT NO SURVEY WAS PERFORMED FOR THIS PROJECT. THE STATIONING AND TOPOGRAPHY SHOWN IN THE PLANS WAS CREATED USING MICROFILM AND FIELD MEASUREMENTS, BOTH SHALL BE CONSIDERED TO BE APPROXIMATE. THE CONTRACTOR SHALL VERIFY DIMENSIONS AND CONDITIONS IN THE FIELD PRIOR TO CONSTRUCTION AND ORDERING MATERIALS.
- THE RESIDENT ENGINEER SHALL VERIFY THE EXISTENCE OF HIGHWAY LIGHTING AND/OR INTELLIGENT TRANSPORTATION SYSTEMS (I.T.S.) UTILITIES WITHIN THE PROJECT LIMITS. IF HIGHWAY LIGHTING AND/OR I.T.S. EXISTS WITHIN THE PROJECT LIMITS, AND IF THESE ITEMS REQUIRE LOCATING, THE CONTRACTOR SHALL BE DIRECTED TO DO SO ACCORDING TO SECTION 803 OF THE STANDARD SPECIFICATIONS. THIS WORK SHALL BE PAID FOR ACCORDING TO ARTICLE 109.04 OF THE STANDARD SPECIFICATIONS.
- THE CONTRACTOR SHALL PROVIDE POSITIVE AND ADEQUATE DRAINAGE AT ALL TIMES.
- NO OVERNIGHT LANE CLOSURES WILL BE PERMITTED.
- THE THICKNESS OF HOT-MIX ASPHALT SURFACE MIXTURES SHOWN ON THE PLANS IS THE NOMINAL THICKNESS. DEVIATIONS MAY OCCUR DUE TO IRREGULARITIES IN THE EXISTING SURFACE OR BASE ON WHICH THE HOT-MIX ASPHALT MIXTURE IS PLACED.
- THE VARIOUS THICKNESS OF HOT-MIX ASPHALT SURFACE REMOVAL SHOWN ON THE PLANS IS THE AVERAGE THICKNESS BASED UPON CONTROLLING THICKNESS AS INDICATED. DEVIATIONS FROM THE NOMINAL THICKNESS WILL BE PERMITTED WHEN SUCH DEVIATIONS OCCUR DUE TO IRREGULARITIES IN THE EXISTING SURFACE. HOT-MIX ASPHALT SURFACE REMOVAL HAS BEEN INCLUDED IN THE PLANS FOR THE PURPOSE OF REMOVING HIGH IRREGULARITIES AND TO ESTABLISH CROSS SLOPE.
- THE LOCATIONS OF THE REPAIR AREAS AS SHOWN IN THE PLANS ARE APPROXIMATE LOCATIONS. THE EXACT LOCATIONS SHALL BE DETERMINED BY THE ENGINEER.
- "ROAD CONSTRUCTION AHEAD" SIGNS SHALL BE PLACED AT THE BEGINNING OF THE PROJECT PLUS THE INTERSECTING SIDEROADS, AND WILL BE CONSIDERED INCLUDED IN THE TRAFFIC CONTROL PAY ITEMS. ALL CONSTRUCTION SIGNS SHALL BE 48" X 48" FLUORESCENT ORANGE.
- THE PROPOSED PAVEMENT MARKING SHALL MATCH THE LOCATIONS OF EXISTING PAVEMENT MARKING, AS DIRECTED BY THE ENGINEER.
- ALL DISTURBED EMBANKMENT AREAS SHALL BE SEEDED WITH CLASS 2A SEED, FERTILIZER AND MULCH AS PER SECTION 250.04 OF THE STANDARD SPECIFICATIONS AND AS DIRECTED BY THE ENGINEER. THE COST FOR PERFORMING THIS WORK SHALL BE CONSIDERED INCLUDED IN THE UNIT PRICE BID FOR FURNISHED EXCAVATION.
- ONLY SHORT TERM PAVEMENT MARKING REMOVAL FROM THE FINAL SURFACE SHALL BE PAID FOR AS "WORK ZONE PAVEMENT MARKING REMOVAL (50. FT.)".
- THE INTENT OF THE MILLING IS TO REMOVE THE HMA RESURFACING ONLY THE UNDERLYING CONCRETE SHALL NOT BE DISTURBED.

THE FOLLOWING RATES OF APPLICATION HAVE BEEN USED TO CALCULATE THE PLAN QUANTITIES:

HOT-MIX ASPHALT SURFACE / BINDER	0.056 TON/SQ. YD. PER 1"
HOT-MIX ASPHALT MATERIALS (PRIME COAT)	0.00038 TON/SQ. YD. (ON PAVEMENT)
HOT-MIX ASPHALT MATERIALS (PRIME COAT)	0.001425 TON/SQ.YD. (ON AGG)
AGGREGATE MATERIAL	2.05 TON/CU. YD.
AGGREGATE PRIME COAT	0.002 TON/SQ. YD.

INDEX OF SHEETS

- COVER SHEET
- INDEX OF SHEETS, HIGHWAY STANDARDS, GENERAL NOTES & COMMITMENTS
- 5 SUMMARY OF QUANTITIES
- 7 TYPICAL SECTIONS
- LINE DIAGRAM
- 13 SCHEDULE OF QUANTITIES
- ENTRANCE & TAPER DETAILS
- GUARDRAIL DETAILS

HIGHWAY STANDARDS

000001-06	701011-04
001006	701201-04
406201-01	701306-03
442201-03	701311-03
630001-10	701326-04
630301-06	701336-06
631031-12	701901-03
635006-03	780001-04
635011-02	781001-03
701006-05	

MIXTURE REQUIREMENT CHART


MIXTURE USE	SURFACE	SHOULDERS 2.25"
AC/PG	PG 64-22	PG 64-22
RAP % (MAX)	SEE SPEC.	SEE SPEC.
DESIGN AIR VOIDS	4.0% @ Ndes=70	**2.0% @ Ndes=30
MIX COMPOSITION		
(GRADATION MIXTURE)	IL 9.5	NMAS 3/4"
FRICTION AGG	MIXTURE "C"	
QUALITY MGMT PROGRAM	QC/OA	QC/OA

PLAN QUANTITIES FOR HOT-MIX ASPHALT SURFACE COURSE ITEMS ARE CALCULATED USING A UNIT WEIGHT OF 112 LB/SQ YD/IN.

** TOP LIFT SHOULDERS - DESIGN THIS MIX AT 2.0% VOIDS AND ADD ASPHALT TO REDUCE VOIDS TO 1.5%.

COMMITMENTS

NONE

FILE NAME *	USER NAME *	DESIGNED - RKA	REVISED -	 Allen Henderson & Associates, Inc. Civil and Structural Engineers Springfield, IL. 62703 Phone: (217)544-8033 IL Design Firm No. 184-001907	INDEX OF SHEETS, HIGHWAY STANDARDS, GENERAL NOTES & COMMITMENTS		F.A.P. RTE.	SECTION	COUNTY	TOTAL SHEETS	SHEET NO.
#FILES*	DRAWN - RKA	REVISED -	310				155.561RS-3	GREENE	15	2	
PLOT SCALE *	CHECKED - CPK	REVISED -	SCALE:		SHEET NO. 1 OF 1 SHEETS	STA.	TO STA.	FED. ROAD DIST. NO. [ILLINOIS] FED. AID PROJECT			
PLOT DATE * DATE*	DATE - 04/10/08	REVISED -						CONTRACT NO. 76H12			

100% STATE

CODE NO.	ITEM	UNIT	TOTAL QUANTITY	CONSTR. CODE
				ROADWAY 0005 RURAL
20400800	FURNISHED EXCAVATION	CU YD	160	160
40200800	AGGREGATE SURFACE COURSE, TYPE B	TON	15	15
40600200	BITUMINOUS MATERIALS (PRIME COAT)	TON	13.7	13.7
40600300	AGGREGATE (PRIME COAT)	TON	72	72
40600982	HOT-MIX ASPHALT SURFACE REMOVAL - BUTT JOINT	SQ YD	56	56
40600985	PORTLAND CEMENT CONCRETE SURFACE REMOVAL - BUTT JOINT	SQ YD	402	402
40600990	TEMPORARY RAMP	SQ YD	136	136
40603315	HOT-MIX ASPHALT SURFACE COURSE, MIX "C", N70	TON	4759	4759
40800050	INCIDENTAL HOT-MIX ASPHALT SURFACING	TON	9	9
44000152	HOT-MIX ASPHALT SURFACE REMOVAL, 3/4"	SQ YD	18598	18598
44000158	HOT-MIX ASPHALT SURFACE REMOVAL, 2 1/4"	SQ YD	120	120
44000159	HOT-MIX ASPHALT SURFACE REMOVAL, 2 1/2"	SQ YD	6	6
44004000	PAVED DITCH REMOVAL	FOOT	291	291
44004250	PAVED SHOULDER REMOVAL	SQ YD	11649	11649

14

CODE NO.	ITEM	UNIT	TOTAL QUANTITY	CONSTR. CODE	
				ROADWAY	
				0005	RURAL
44200094	PAVEMENT PATCHING, TYPE II, 8 INCH	SO YD	816	816	
44300100	AREA REFLECTIVE CRACK CONTROL TREATMENT	SO YD	4032	4032	
44300200	STRIP REFLECTIVE CRACK CONTROL TREATMENT	FOOT	7029	7029	
48102100	AGGREGATE WEDGE SHOULDER, TYPE B	TON	454	454	
48203035	HOT-MIX ASPHALT SHOULDERS, 9 1/2"	SO YD	6226	6226	
48203039	HOT-MIX ASPHALT SHOULDERS, 10 1/2"	SO YD	5423	5423	
* 63000003	STEEL PLATE BEAM GUARDRAIL, TYPE A, 9 FOOT POSTS	FOOT	200	200	
* 63100085	TRAFFIC BARRIER TERMINAL, TYPE 6	EACH	4	4	
* 63100167	TRAFFIC BARRIER TERMINAL, TYPE 1 (SPECIAL) TANGENT	EACH	4	4	
63200310	GUARDRAIL REMOVAL	FOOT	452	452	
67000400	ENGINEER'S FIELD OFFICE, TYPE A	CAL MO	3	3	
67100100	MOBILIZATION	L SUM	1	1	
70100450	TRAFFIC CONTROL AND PROTECTION, STANDARD 701201	L SUM	1	1	
70100460	TRAFFIC CONTROL AND PROTECTION, STANDARD 701306	L SUM	1	1	

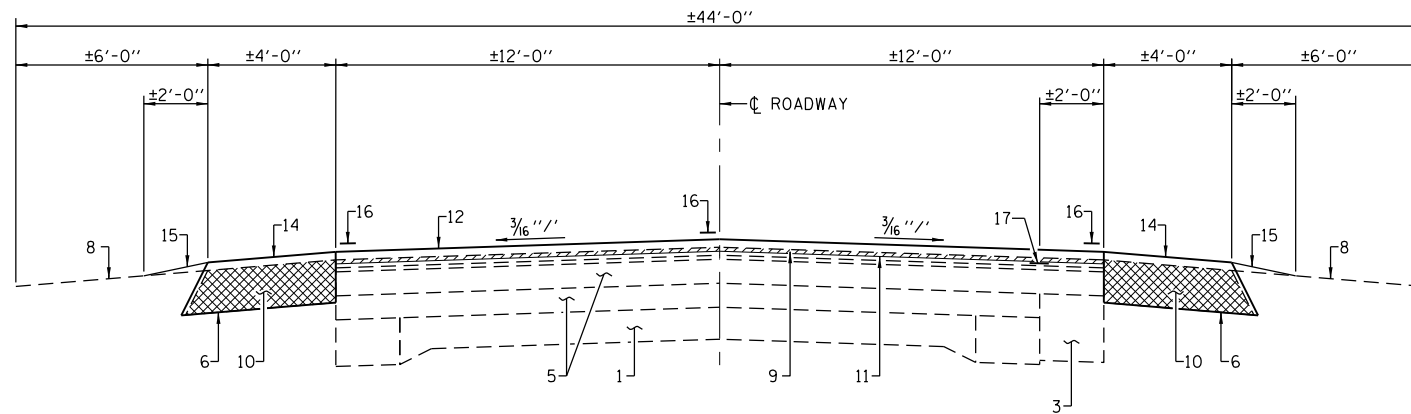
* SPECIALTY ITEM

FILE NAME *	USER NAME *	DESIGNED -	REVISED -	 Allen Henderson & Associates, Inc. Civil and Structural Engineers Springfield, IL. 62703 Phone: (217)544-8033 IL Design Firm No. 184-001907	SUMMARY OF QUANTITIES SHEET NO. 2 OF 3 SHEETS	P.A.P. RTE.	SECTION	COUNTY	TOTAL SHEETS	SHEET NO.
PLOT SCALE *	CHECKED -	REVISED -	310			55.56RS-3	GREENE	15	4	
PLOT DATE *	DRAWN -	REVISED -	CONTRACT NO. 76H12							
	CHECKED -	REVISED -	ILLINOIS FED. AID PROJECT							

4573 B 1 1991

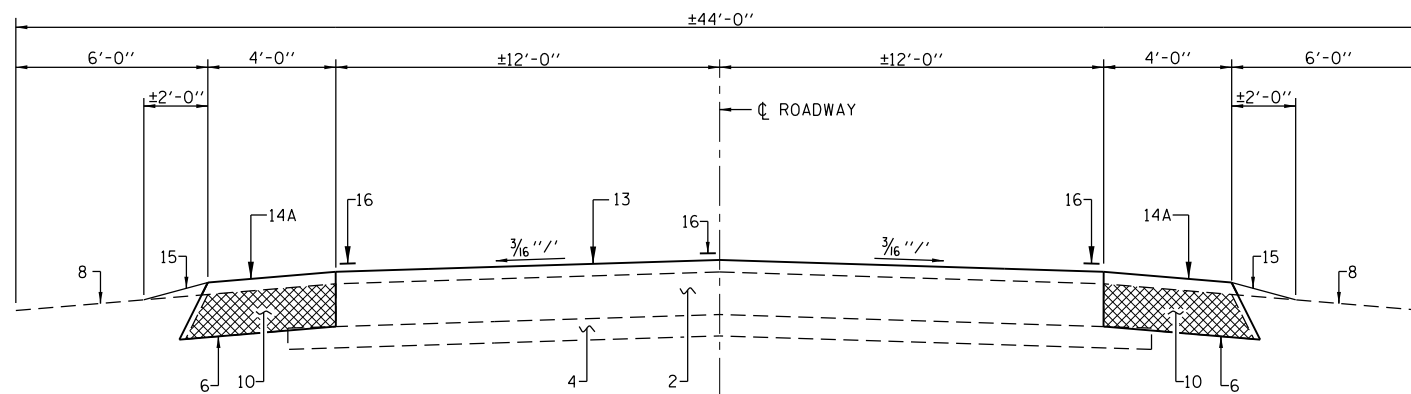
CODE NO.	ITEM	UNIT	TOTAL QUANTITY	CONSTR. CODE	
				ROADWAY	
				0005	RURAL
70100500	TRAFFIC CONTROL AND PROTECTION, STANDARD 701326	L SUM	1	1	
70100600	TRAFFIC CONTROL AND PROTECTION, STANDARD 701336	L SUM	1	1	
70103815	TRAFFIC CONTROL SURVEILLANCE	CAL DA	20	20	
70300100	SHORT TERM PAVEMENT MARKING	FOOT	2650	2650	
70300220	TEMPORARY PAVEMENT MARKING - LINE 4"	FOOT	32434	32434	
70301000	WORK ZONE PAVEMENT MARKING REMOVAL	SQ FT	882	882	
* 78000200	THERMOPLASTIC PAVEMENT MARKING - LINE 4"	FOOT	32434	32434	
* 78008210	POLYUREA PAVEMENT MARKING TYPE I - LINE 4"	FOOT	1214	1214	
* 78100100	RAISED REFLECTIVE PAVEMENT MARKER	EACH	167	167	
* 78200410	GUARDRAIL MARKERS, TYPE A	EACH	10	10	
* 78201000	TERMINAL MARKER - DIRECT APPLIED	EACH	4	4	
78300100	PAVEMENT MARKING REMOVAL	SQ FT	405	405	
78300200	RAISED REFLECTIVE PAVEMENT MARKER REMOVAL	EACH	91	91	
Ø 70076604	TRAINEES TRAINING PROGRAM GRADUATE	HOOR	500	500	
X6061460	PAVED DITCH (SPECIAL)	FOOT	291	291	

* SPECIALTY ITEM
Ø 0042



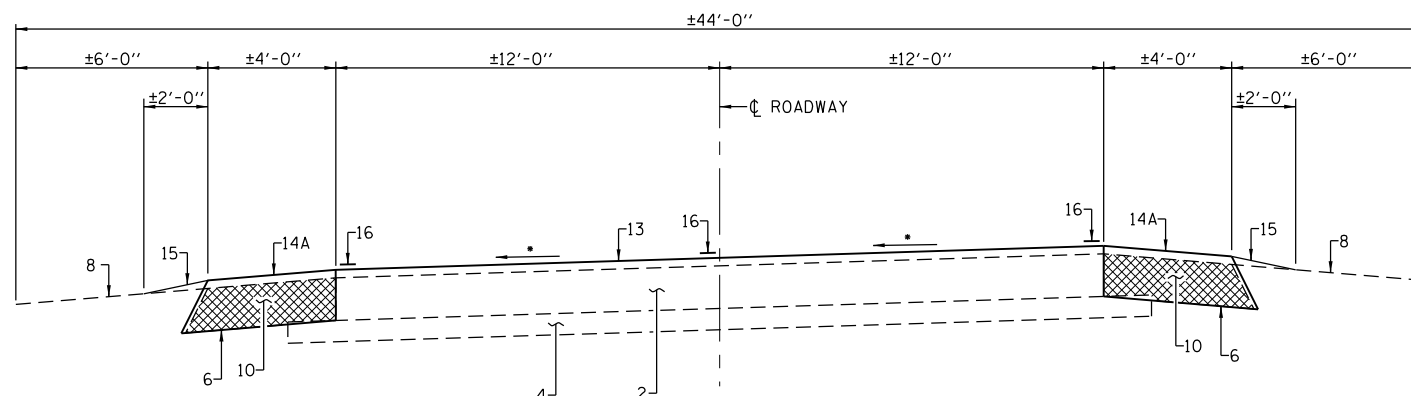
TYPICAL SECTION #1

F.A.P. 310 (U.S. 67)
STA. 206+37 TO STA. 276+66



TYPICAL SECTION #2

F.A.P. 310 (U.S. 67)
STA. 282+39.08 TO STA. 290+46.48
STA. 302+11.29 TO STA. 310+10.96



TYPICAL SECTION #3

F.A.P. 310 (U.S. 67)
STA. 276+66 TO STA. 282+39.08
STA. 290+46.48 TO STA. 302+11.29
STA. 319+72.04 TO STA. 327+10.49

- * S.E. = 0.035'/' STA. 276+66.42 TO STA. 278+72.42
- S.E. = 0.035'/' STA. 284+39.08 TO STA. 282+39.08
- S.E. = 0.042'/' STA. 290+46.48 TO STA. 292+46.48
- S.E. = 0.042'/' STA. 304+11.81 TO STA. 302+11.29

- INDICATES HMA SURFACE REMOVAL
- INDICATES HMA SHOULDER REMOVAL

PAVEMENT LEGEND

1. EX 9"-6"-9" PCC PVMT
2. EX PCC PVMT
3. EX PCC BASE CRSE WIDENING
4. EX SUB-BASE
5. EX BIT OVERLAYS
6. EX HMA SHLDRS 8"
7. EX AGG SHLDRS, TY A
8. EX EARTH SHLDR
9. PR HMA SURF REMOVAL 3/4"
10. PR HMA SHOULDER REMOVAL
11. PR BIT MATERIAL & AGGREGATE (PRIME COAT)
12. PR HMA SURFACE COURSE 2 1/4"
13. PR HMA SURFACE COURSE 2 1/2"
14. PR HMA SHOULDERS, 9 1/2"
- 14A. PR HMA SHOULDERS, 10 1/2"
15. PR AGG WEDGE SHOULDER, TYPE B
16. PR THERMOPLASTIC PVMT MARKING
17. PR STRIP REFLECTIVE CRACK CONTROL

USER NAME = *USER*	DESIGNED -	REVISED -
	DRAWN -	REVISED -
PLOT SCALE = *SCALE*	CHECKED -	REVISED -
PLOT DATE = *DATE*	DATE -	REVISED -

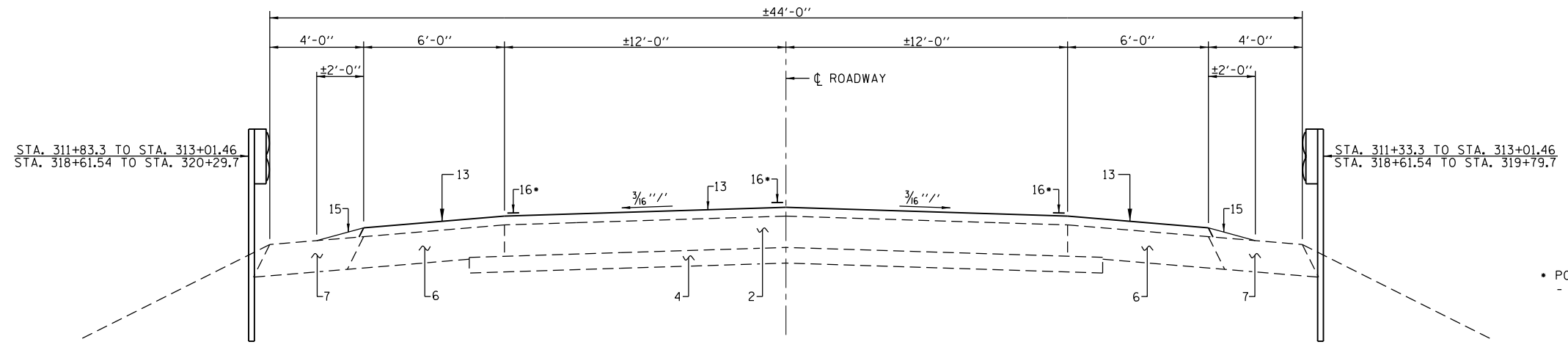


Allen Henderson & Associates, Inc.
Civil and Structural Engineers Springfield, IL
62703 Phone: (217)544-8033 IL Design Firm
No. 184-001907

TYPICAL ROADWAY SECTIONS

SCALE: NONE SHEET NO. 1 OF 2 SHEETS STA. + TO STA. +

F.A.P. RTE.	SECTION	COUNTY	TOTAL SHEETS	SHEET NO.
310	(55,56)RS-3	GREENE	15	6
CONTRACT NO. 76H12				
FED. ROAD DIST. NO. ILLINOIS FED. AID PROJECT				

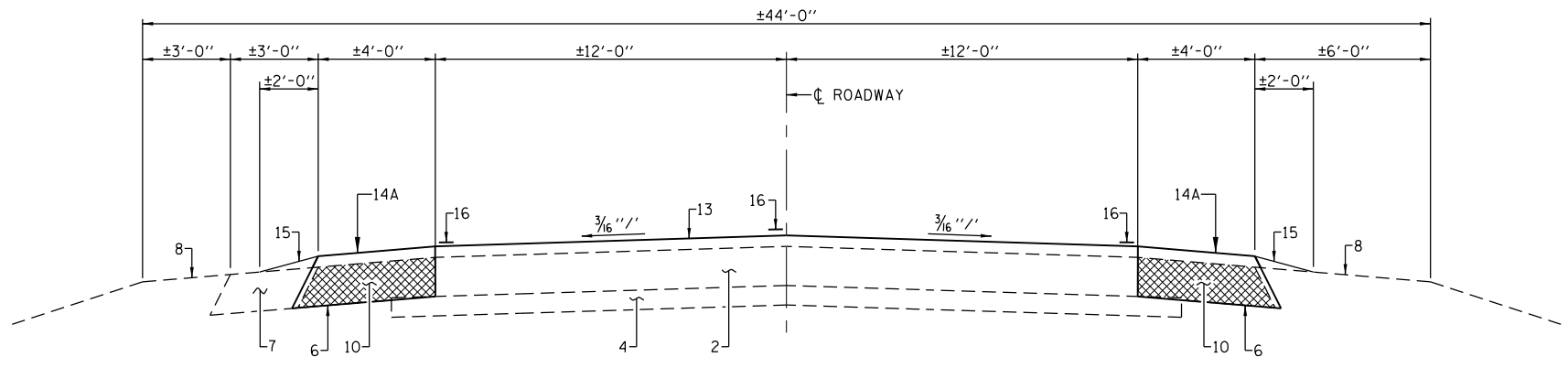


TYPICAL SECTION #4

F.A.P. 310 (U.S. 67)
 STA. 312+10.96 TO STA. 313+12.96
 BRIDGE OMISSION - STA. 313+12.96 TO STA. 318+50.04
 STA. 318+50.04 TO STA. 319+72.04

• POLYUREA PAVEMENT MARKING - LINE 4"
 - STA. 313+12.96 TO STA. 318+50.04

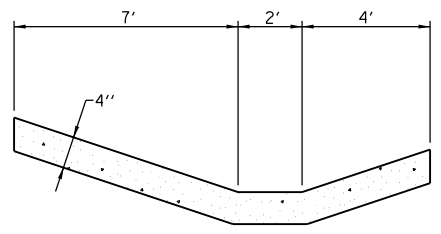
NOTE: RESURFACING (13) OVER THE EXISTING SHOULDER SHALL BE PAID FOR AS HMA SURFACE COURSE.



TYPICAL SECTION #5

F.A.P. 310 (U.S. 67)
 STA. 327+10.99 TO STA. 345+02

- INDICATES HMA SURFACE REMOVAL
- INDICATES HMA SHOULDER REMOVAL



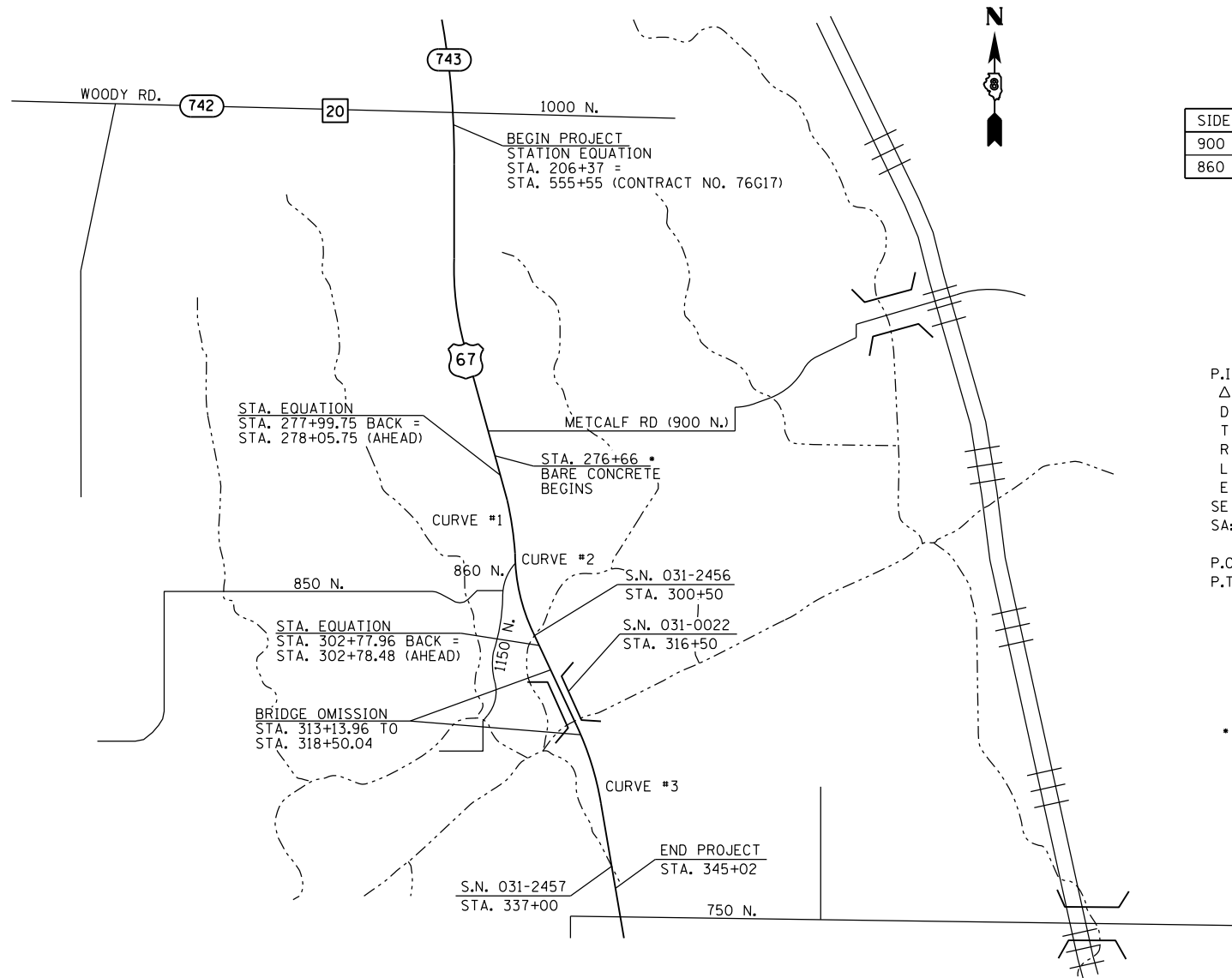
TYPICAL SECTION - PAVED DITCH (SPECIAL)

STA. 287+53 TO STA. 290+44

PAVEMENT LEGEND

1. EX 9"-6"-9" PCC PVMT
2. EX PCC PVMT
3. EX PCC BASE CRSE WIDENING
4. EX SUB-BASE
5. EX BIT OVERLAYS
6. EX HMA SHLDRS 8"
7. EX AGG SHLDRS, TY A
8. EX EARTH SHLDR
9. PR HMA SURF REMOVAL 3/4"
10. PR HMA SHOULDER REMOVAL
11. PR BIT MATERIAL & AGGREGATE (PRIME COAT)
12. PR HMA SURFACE COURSE 2 1/4"
13. PR HMA SURFACE COURSE 2 1/2"
14. PR HMA SHOULDERS, 9 1/2"
- 14A. PR HMA SHOULDERS, 10 1/2"
15. PR AGG WEDGE SHOULDER, TYPE B
16. PR THERMOPLASTIC PVMT MARKING
17. PR STRIP REFLECTIVE CRACK CONTROL

USER NAME = \$USER*	DESIGNED -	REVISED -	 Allen Henderson & Associates, Inc. Civil and Structural Engineers Springfield, IL 62703 Phone: (217)544-8033 IL Design Firm No. 184-001907	TYPICAL ROADWAY SECTIONS		F.A.P. RTE. 310	SECTION (55,56)RS-3	COUNTY GREENE	TOTAL SHEETS 15	SHEET NO. 7	
PLOT SCALE = \$SCALE*	CHECKED -	REVISED -		SCALE: NONE	SHEET NO. 2 OF 2 SHEETS	STA. + TO STA. +	CONTRACT NO. 76H12				
PLOT DATE = \$DATE*	DATE -	REVISED -		FED. ROAD DIST. NO. ILLINOIS FED. AID PROJECT							



SIDE ROAD	STATION
900 N. (METCALF ROAD)	266+13.80
860 N.	287+34.65

CURVE #1
 P.I. STA. 280+56.00
 $\Delta = 6^{\circ}-15'-00''$
 $D = 1^{\circ}-15'-0''$
 $T = 250.25'$
 $R = 4583.66'$
 $L = 500.00'$
 $E = 6.83'$
 $SE = 0.035 \text{ FT/FT}$
 SA: STA. 276+66.42 TO STA. 278+72.42
 STA. 284+39.08 TO STA. 282+39.08
 P.C. STA. 278+05.75
 P.T. STA. 283+05.75

CURVE #2
 P.I. STA. 297+32.70
 $\Delta = 16^{\circ}-28'-20''$
 $D = 1^{\circ}-30'-0''$
 $T = 552.89'$
 $R = 3819.72'$
 $L = 1098.15'$
 $E = 39.81'$
 $SE = 0.042 \text{ FT/FT}$
 SA: STA. 290+46.48 TO STA. 292+46.48
 STA. 304+11.81 TO STA. 302+11.29
 P.C. STA. 291+79.81
 P.T. STA. 302+77.96

CURVE #3
 P.I. STA. 324+04.32
 $\Delta = 15^{\circ}-00'-00''$
 $D = 2^{\circ}-00'-00''$
 $T = 377.16'$
 $R = 2864.79'$
 $L = 750.00'$
 $E = 24.72'$
 $SE = 0.056 \text{ FT/FT}$
 SA: STA. 318+93.83 TO STA. 320+93.83
 STA. 329+10.49 TO STA. 327+10.49
 P.C. STA. 320+27.16
 P.T. STA. 327+77.16

- STA. 206+37 TO STA. 276+66 - EXISTING HMA ROADWAY SECTION WITH $\frac{3}{4}$ " HMA SURFACE REMOVAL AND $\frac{2}{4}$ " HMA OVERLAY
- STA. 276+66 TO STA. 345+02 - EXISTING BARE CONCRETE ROADWAY SECTION WITH $\frac{2}{2}$ " HMA OVERLAY

ENTRANCE SCHEDULE

LOCATION	TYPE	WIDTH		MAILBOX LOCATION	BITUMINOUS MATERIALS PRIME COAT (TON)	AGGREGATE PRIME COAT (TON)	INCIDENTAL HMA SURFACING (TON)	AGGREGATE SURFACE COURSE TYPE B FIELD ENTRANCE (TON)	EXISTING SURFACE TYPE	COMMENTS
		A	B							
STA. 208+47 LT	FE	14		NO				0.2	EARTH	
STA. 227+05 LT	PE	24	20	227+08 RT				0.3	AGG	MAILBOX ACROSS STREET
STA. 227+71 RT	FE	16		NO				0.2	EARTH	
STA. 227+73 LT	PE	22	18	NO				0.3	AGG	
STA. 228+62 LT	PE	37	32	228+98 RT				0.5	AGG	MAILBOX ACROSS STREET
STA. 230+80 RT	PE	34	30	NO				0.5	AGG	
STA. 231+55 LT	PE	34	29	NO				0.5	AGG	
STA. 233+67 LT	FE	50	43	NO				0.7	AGG	
STA. 234+97 LT	FE	59	52	234+86 RT				0.8	AGG	MAILBOX ACROSS STREET
STA. 239+21 LT	PE	23	19	NO				0.3	AGG	
STA. 239+28 RT	CE	46	35	239+49 RT				0.6	AGG	
STA. 245+49 LT	FE	23	19	NO				0.3	EARTH/AGG	
STA. 252+45 LT	FE	15		NO				0.2	EARTH	
STA. 252+51 RT	PE	33	29	NO				0.5	AGG	
STA. 253+26 RT	PE	24	20	253+08 LT				0.3	AGG	MAILBOX ACROSS STREET
STA. 253+70 LT	FE	12		NO				0.2	EARTH	
STA. 255+26 RT	FE	25	21	NO				0.3	AGG	
STA. 255+48 LT	FE	20	17	NO				0.3	EARTH	
STA. 256+15 RT	PE	23	20	255+96 RT				0.3	AGG	
STA. 258+12 LT	PE	35	29	257+54 RT				0.5	AGG	MAILBOX ACROSS STREET
STA. 259+48 RT	PE	28	25	NO				0.4	AGG	
STA. 260+14 RT	PE	22	17	260+01 LT				0.3	AGG	MAILBOX ACROSS STREET
STA. 260+19 LT	PE	27	23	NO				0.4	AGG	
STA. 260+95 RT	PE	37	32	IN BTWN				0.5	AGG	
SUB-TOTAL								9.4		

FILE NAME =	USER NAME =	DESIGNED -	REVISED -
		CHECKED -	REVISED -
		DRAWN -	REVISED -
		CHECKED -	REVISED -



Allen Henderson & Associates, Inc.
 Civil and Structural Engineers Springfield, IL
 62703 Phone: (217)544-8033 IL Design Firm
 No. 184-001907

QUANTITY SCHEDULES

SHEET NO. 1 OF 5 SHEETS

F.A.P. RTE.	SECTION	COUNTY	TOTAL SHEETS	SHEET NO.
310	(55,56)RS-3	GREENE	15	9
			CONTRACT NO. 76H12	
ILLINOIS FED. AID PROJECT				

PAVEMENT MARKING SCHEDULE

LOCATION	LENGTH	THERMOPLASTIC PAVEMENT MARKING			POLYUREA PAVEMENT MARKING			TEMPORARY PAVEMENT MARKING			RAISED REFLECTIVE PAVEMENT MARKER REMOVAL	RAISED REFLECTIVE PAVEMENT MARKERS	SHORT TERM PAVEMENT MARKING	WORK ZONE PAVEMENT MARKING REMOVAL	PAVEMENT MARKING REMOVAL		
		4"			4"			4"									
		SOLID WHITE	SKIP-DASH	SOLID YELLOW	SOLID WHITE	SKIP-DASH	SOLID YELLOW	SOLID WHITE	SKIP-DASH	SOLID YELLOW							
		EDGE LINE	YELLOW CENTERLINE	CENTERLINE	EDGE LINE	YELLOW CENTERLINE	CENTERLINE	EDGE LINE	YELLOW CENTERLINE	CENTERLINE							
		FOOT	FOOT	FOOT	FOOT	FOOT	FOOT	FOOT	FOOT	FOOT	EACH	EACH	FOOT	SQ FT	SQ FT		
STA. 206+37 TO STA. 230+50	2413	4826	610						4826	610			30	30	483	161	
STA. 230+50 TO STA. 242+00	1150	2300	290 LT	1150 RT					2300	290 LT	1150 RT		14	14	230	77	
STA. 242+00 TO STA. 244+00	200	400		400					400		400		5	5	40	13	
STA. 244+00 TO STA. 255+00	1100	2200	280 RT	1100 LT					2200	280 RT	1100 LT		13	13	220	73	
STA. 255+00 TO STA. 313+12.96	5813	11468	1450						11468	1450			27*	105	1147	595	
STA. 313+12.96 TO STA. 318+50.04	537				1074	140										405	
STA. 318+50.04 TO STA. 345+00	2650	5300	660						5300	660					530	177	
SUB-TOTAL		26494	3290	2650					26494	3290	2650						
TOTAL			32434			1214				32434			91	167	2650	882	405

* NO REFLECTIVE PAVEMENT MARKERS FROM STA. 276+66 TO STA. 345+02

GUARDRAIL SCHEDULE

LOCATION	TRAFFIC BARRIER TERMINAL TYPE 1 (SPECIAL) TANGENT EACH	STEEL PLATE BEAM GUARDRAIL TYPE A 9' POSTS FOOT	TRAFFIC BARRIER TERMINAL TYPE 6 EACH	GUARDRAIL MARKERS, TYPE A EACH	TERMINAL MARKERS-DIRECT APPLIED EACH
STA. 311+33.3 TO STA. 311+83.3 RT	1			1	1
STA. 311+83.3 TO STA. 312+58.3 RT		75		1	
STA. 312+58.3 TO STA. 313+01.46 RT			1	1	
STA. 311+83.3 TO STA. 312+33.3 LT	1			1	1
STA. 312+33.3 TO STA. 312+58.3 LT		25			
STA. 312+58.3 TO STA. 313+01.46 LT			1	1	
STA. 318+61.54 TO STA. 319+04.7 RT			1	1	
STA. 319+04.7 TO STA. 319+29.7 RT		25			
STA. 319+29.7 TO STA. 319+79.7 RT	1			1	1
STA. 318+61.54 TO STA. 319+04.7 LT			1	1	
STA. 319+04.7 TO STA. 319+79.7 LT.		75		1	
STA. 319+79.7 TO STA. 320+79.7 LT.	1			1	1
TOTAL	4	200	4	10	4

GUARDRAIL REMOVAL

LOCATION	QUANTITY (FOOT)
STA. 312+07.5 TO STA. 313+01.5 LT	94
STA. 311+69.5 TO STA. 313+01.5 RT	132
STA. 318+61.5 TO STA. 319+93.5 LT	132
STA. 318+61.5 TO STA. 319+55.5 RT	94
TOTAL	452

PAVED DITCH AND PAVED DITCH REMOVAL SCHEDULE

LOCATION	PAVED DITCH (SPECIAL) (EACH)	PAVED DITCH REMOVAL (EACH)
STA. 287+53 TO STA. 290+44	291	291
TOTAL	291	291

FURNISHED EXCAVATION SCHEDULE

LOCATION	QUANTITY (CU. YD.)
STA. 310+98 TO STA. 311+83 RT.	40
STA. 311+48 TO STA. 312+33 LT.	40
STA. 319+30 TO STA. 320+15 RT.	40
STA. 319+80 TO STA. 320+65 LT.	40
TOTAL	160*

* THIS QUANTITY IS AN ESTIMATE FOR THE BUILD UP OF THE EMBANKMENT FOR THE TRAFFIC BARRIER TERMINAL, TYPE 1 (SPECIAL) TANGENT PER STANDARD 630301

FILE NAME =	USER NAME =	DESIGNED -	REVISED -
		CHECKED -	REVISED -
		DRAWN -	REVISED -
		CHECKED -	REVISED -



Allen Henderson & Associates, Inc.
Civil and Structural Engineers Springfield, IL
62703 Phone: (217)544-8033 IL Design Firm
No. 184-001907

QUANTITY SCHEDULES

SHEET NO. 3 OF 5 SHEETS

F.A.P. RTE.	SECTION	COUNTY	TOTAL SHEETS	SHEET NO.
310	(55,56)RS-3	GREENE	15	11
CONTRACT NO. 76H12				
ILLINOIS FED. AID PROJECT				

MAINLINE RESURFACING SCHEDULE							
LOCATION	HMA SURFACE REMOVAL, 3/4"	HMA SURFACE REMOVAL, 2 1/4"	HMA SURFACE REMOVAL, 2 1/2"	BIT. MATERIAL PRIME COAT	AGGREGATE PRIME COAT	HMA SURFACE COURSE MIX D, N70	PORTLAND CEMENT CONCRETE SURFACE REMOVAL-BUTT JT.
	SQ. YD.	SQ. YD.	SQ. YD.	TON	TON	TON	SQ. YD.
STA. 206+37 TO STA. 206+92		120		0.05	0.24	15	
STA. 206+92 TO STA. 276+41	18531			7.05	37.12	2339	
STA. 276+41 TO STA. 312+10.96	67			3.62	19.04	1333	
STA. 312+10.96 TO STA. 313+12.96				0.16	0.82	58	
STA. 318+50.04 TO STA. 319+72.04				0.19	0.98	69	
STA. 319+72.04 TO STA. 345+02			6	2.56	13.49	945	
STA. 311+62.96 TO STA. 312+12.96							134
STA. 318+50.04 TO STA. 319+00.04							134
STA. 344+50 TO STA. 345+00							134
ENTRANCE & SIDEROAD TOTAL (FROM SCHEDULE)				0.03	0.14		
TOTAL	18598	120	6	13.66	71.83	4759	402
ROUNDING				13.7	72		

AREA CRACK CONTROL				
STATION	LANE	LENGTH	WIDTH	AREA
	LT/RT	FOOT	FOOT	SQ FT
344+00.00	LT	8	12	96
344+00.00	RT	8	12	96
343+00.00	LT	8	12	96
343+00.00	RT	8	12	96
342+00.00	LT	8	12	96
342+00.00	RT	8	12	96
339+50.00	LT	8	12	96
339+50.00	RT	8	12	96
330+00.00	LT	8	12	96
330+00.00	RT	8	12	96
312+00.00	LT	8	12	96
312+00.00	RT	8	12	96
311+00.00	LT	8	12	96
311+00.00	RT	8	12	96
306+00.00	LT	8	12	96
306+00.00	RT	8	12	96
304+00.00	LT	8	12	96
304+00.00	RT	8	12	96
303+50.00	LT	8	12	96
303+50.00	RT	8	12	96
301+00.00	LT	8	12	96
301+00.00	RT	8	12	96
300+50.00	LT	8	12	96
300+50.00	RT	8	12	96
296+00.00	LT	8	12	96
296+00.00	RT	8	12	96
290+00.00	LT	8	12	96
290+00.00	RT	8	12	96
288+00.00	LT	8	12	96
288+00.00	RT	8	12	96
282+75.00	LT	8	12	96
282+75.00	RT	8	12	96
281+00.00	LT	8	12	96
281+00.00	RT	8	12	96
280+75.00	LT	8	12	96
280+75.00	RT	8	12	96
278+50.00	LT	8	12	96
278+50.00	RT	8	12	96
278+00.00	LT	8	12	96
278+00.00	RT	8	12	96
277+50.00	LT	8	12	96
277+50.00	RT	8	12	96
TOTAL				4032

SHOULDER SCHEDULE				
LOCATION	HOT-MIX ASPHALT SHOULDERS, 9 1/2"	HOT-MIX ASPHALT SHOULDERS 10 1/2"	PAVED SHOULDER REMOVAL	AGGREGATE WEDGE SHOULDER TYPE B
	SQ. YD.	SQ. YD.	SQ. YD.	TON
STA. 206+37 TO STA. 276+41	6226		6226	124
STA. 276+41 TO STA. 312+10.96		3174	3174	231
STA. 312+10.96 TO STA. 313+12.96				4
STA. 318+50.04 TO STA. 319+72.04				5
STA. 319+72.04 TO STA. 345+02		2249	2249	90
TOTAL	6226	5423	11649	454

TEMP. RAMP / BUTT JOINT SCHEDULE		
	TEMPORARY RAMP	HMA SURFACE REMOVAL BUTT JOINT
	SQ. YD.	SQ. YD.
STA. 206+37 TO STA. 206+42	14	
METCALF ROAD - STA. 266+13.80 LT	30	21
860 N. - STA. 287+34.65 RT.	50	35
STA. 311+07.96 TO STA. 311+12.96	14	
STA. 318+50.04 TO STA. 318+55.04	14	
STA. 344+97 TO STA. 345+02	14	
TOTAL	136	56

STRIP REFLECTIVE CRACK CONTROL TREATMENT SCHEDULE	
LOCATION	QUANTITY (FOOT)
STA. 206+37 TO STA. 276+66 RT.	7029
TOTAL	7029

FILE NAME =	USER NAME =	DESIGNED -	REVISED -
		CHECKED -	REVISED -
	PLOT SCALE =	DRAWN -	REVISED -
	PLOT DATE =	CHECKED -	REVISED -



Allen Henderson & Associates, Inc.
Civil and Structural Engineers Springfield, IL
62703 Phone: (217)544-8033 IL Design Firm
No. 184-001907

QUANTITY SCHEDULES

SHEET NO. 4 OF 5 SHEETS

F.A.P. RTE.	SECTION	COUNTY	TOTAL SHEETS	SHEET NO.
310	(55,56)RS-3	GREENE	15	12
CONTRACT NO. 76H12			ILLINOIS FED. AID PROJECT	

PAVEMENT PATCHING, TYPE II, 8 INCH				
LOCATION		LENGTH	WIDTH	
STATION	RT/LT	FT	FT	SQ. YD.
341+00.00	LT	5.00	12.00	6.67
341+00.00	RT	5.00	12.00	6.67
339+00.00	LT	5.00	12.00	6.67
339+00.00	RT	5.00	12.00	6.67
338+00.00	LT	5.00	12.00	6.67
338+00.00	RT	5.00	12.00	6.67
337+00.00	LT	5.00	12.00	6.67
337+00.00	RT	5.00	12.00	6.67
336+00.00	LT	5.00	12.00	6.67
336+00.00	RT	5.00	12.00	6.67
335+00.00	LT	5.00	12.00	6.67
335+00.00	RT	5.00	12.00	6.67
334+00.00	LT	5.00	12.00	6.67
334+00.00	RT	5.00	12.00	6.67
333+00.00	LT	6.00	12.00	8.00
333+00.00	RT	6.00	12.00	8.00
332+00.00	LT	5.00	12.00	6.67
332+00.00	RT	5.00	12.00	6.67
331+00.00	LT	6.00	12.00	8.00
331+00.00	RT	6.00	12.00	8.00
329+00.00	LT	5.00	12.00	6.67
329+00.00	RT	5.00	12.00	6.67
328+00.00	LT	6.00	12.00	8.00
328+00.00	RT	6.00	12.00	8.00
327+00.00	LT	5.00	12.00	6.67
327+00.00	RT	5.00	12.00	6.67
326+00.00	LT	5.00	12.00	6.67
326+00.00	RT	5.00	12.00	6.67
325+00.00	LT	6.00	12.00	8.00
325+00.00	RT	6.00	12.00	8.00
324+00.00	LT	6.00	12.00	8.00
324+00.00	RT	6.00	12.00	8.00
323+00.00	LT	6.00	12.00	8.00
323+00.00	RT	6.00	12.00	8.00
322+00.00	LT	6.00	12.00	8.00
322+00.00	RT	6.00	12.00	8.00
321+00.00	LT	6.00	12.00	8.00
321+00.00	RT	6.00	12.00	8.00
320+00.00	LT	6.00	12.00	8.00
320+00.00	RT	6.00	12.00	8.00
310+00.00	LT	6.00	12.00	8.00
310+00.00	RT	6.00	12.00	8.00
309+00.00	LT	5.00	12.00	6.67
309+00.00	RT	5.00	12.00	6.67
308+00.00	LT	6.00	12.00	8.00
308+00.00	RT	6.00	12.00	8.00
SUB-TOTAL (1)				336

PAVEMENT PATCHING, TYPE II, 8 INCH				
LOCATION		LENGTH	WIDTH	
STATION	RT/LT	FT	FT	SQ. YD.
307+00.00	LT	5.00	12.00	6.67
307+00.00	RT	5.00	12.00	6.67
306+50.00	LT	5.00	12.00	6.67
306+50.00	RT	5.00	12.00	6.67
305+00.00	LT	6.00	12.00	8.00
305+00.00	RT	6.00	12.00	8.00
303+00.00	LT	6.00	12.00	8.00
303+00.00	RT	6.00	12.00	8.00
302+00.00	LT	6.00	12.00	8.00
302+00.00	RT	6.00	12.00	8.00
300+00.00	LT	6.00	12.00	8.00
300+00.00	RT	6.00	12.00	8.00
299+00.00	LT	6.00	12.00	8.00
299+00.00	RT	6.00	12.00	8.00
298+00.00	LT	5.00	12.00	6.67
298+00.00	RT	5.00	12.00	6.67
297+00.00	LT	6.00	12.00	8.00
297+00.00	RT	6.00	12.00	8.00
295+00.00	LT	5.00	12.00	6.67
295+00.00	RT	5.00	12.00	6.67
294+00.00	LT	6.00	12.00	8.00
294+00.00	RT	6.00	12.00	8.00
293+00.00	LT	6.00	12.00	8.00
293+00.00	RT	6.00	12.00	8.00
292+00.00	LT	5.00	12.00	6.67
292+00.00	RT	5.00	12.00	6.67
291+00.00	LT	5.00	12.00	6.67
291+00.00	RT	5.00	12.00	6.67
289+00.00	LT	6.00	12.00	8.00
289+00.00	RT	6.00	12.00	8.00
287+00.00	LT	6.00	12.00	8.00
287+00.00	RT	6.00	12.00	8.00
286+00.00	LT	6.00	12.00	8.00
285+00.00	LT	6.00	12.00	8.00
285+00.00	RT	6.00	12.00	8.00
284+00.00	LT	6.00	12.00	8.00
284+00.00	RT	6.00	12.00	8.00
283+00.00	LT	6.00	12.00	8.00
283+00.00	RT	6.00	12.00	8.00
282+00.00	LT	6.00	12.00	8.00
282+00.00	RT	6.00	12.00	8.00
280+00.00	LT	6.00	12.00	8.00
280+00.00	RT	6.00	12.00	8.00
276+40.00	LT	6.00	12.00	8.00
276+40.00	RT	6.00	12.00	8.00
SUB-TOTAL				344
SUB-TOTAL (1)				336
ANTICIPATED FAILURES (20%)				136
TOTAL				816

FILE NAME =

USER NAME =
 PLOT SCALE =
 PLOT DATE =

DESIGNED -
 CHECKED -
 DRAWN -
 CHECKED -

REVISED -
 REVISED -
 REVISED -
 REVISED -

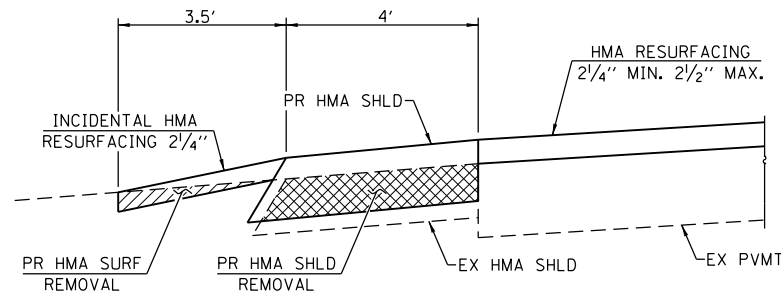


Allen Henderson & Associates, Inc.
 Civil and Structural Engineers Springfield, IL
 62703 Phone: (217)544-8033 IL Design Firm
 No. 184-001907

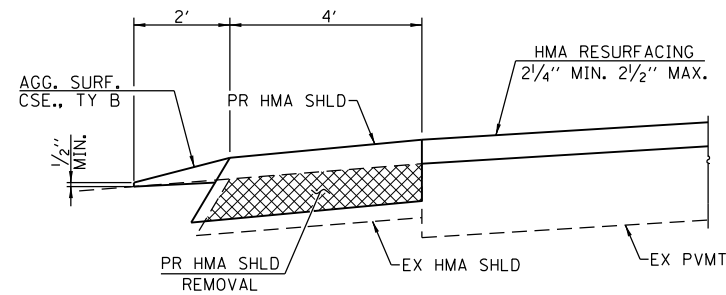
QUANTITY SCHEDULES

SHEET NO. 5 OF 5 SHEETS

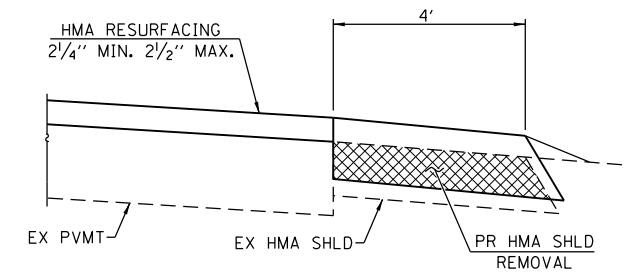
F.A.P. RTE.	SECTION	COUNTY	TOTAL SHEETS	SHEET NO.
310	(55,56)RS-3	GREENE	15	13
				CONTRACT NO. 76H12
ILLINOIS FED. AID PROJECT				



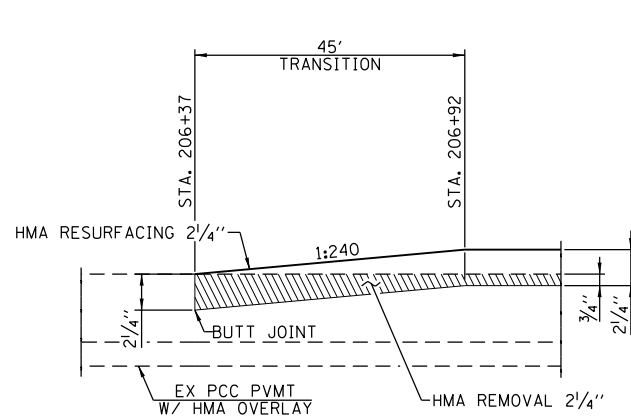
SECTION A-A
(AT SIDE ROAD AND COMMERCIAL
ENTRANCE LOCATIONS)



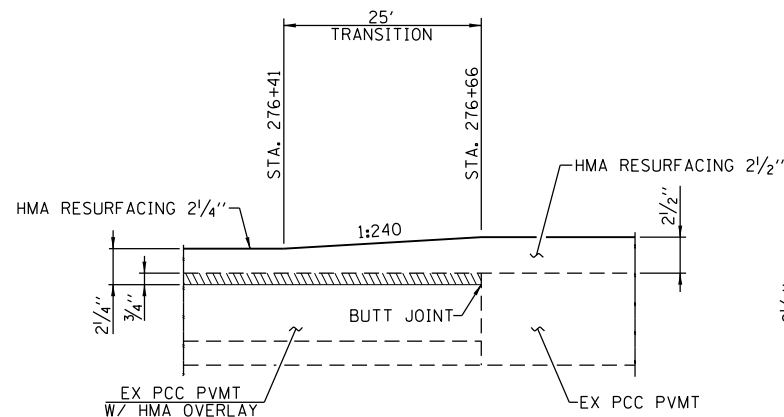
SECTION B-B
(AT P.E. & F.E. LOCATIONS)



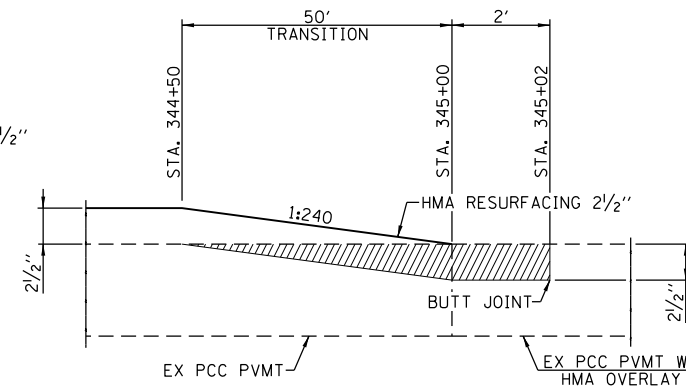
TYPICAL SECTION AT MAILBOX TURNOUT
NOTE: SEE STANDARD 406201 FOR MAILBOX TURNOUT DETAILS



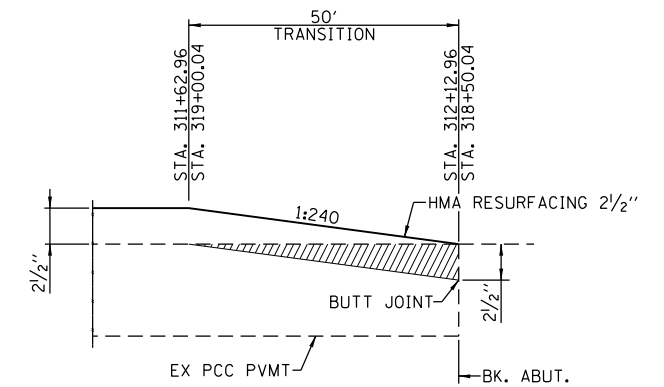
RESURFACING TRANSITION DETAIL
STA. 206+37 TO STA. 206+92



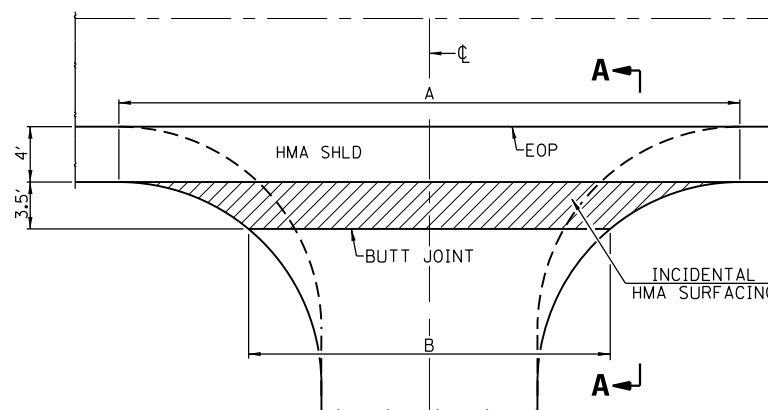
RESURFACING TRANSITION DETAIL
STA. 276+41 TO STA. 276+66



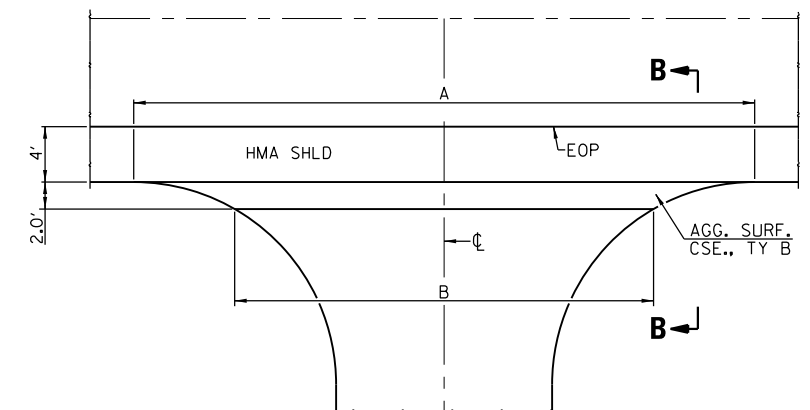
RESURFACING TRANSITION DETAIL
STA. 344+50 TO STA. 345+02



RESURFACING TRANSITION DETAIL
(AT S.N. 031-022)



**SIDEROAD & COMMERCIAL
ENTRANCE DETAIL**



ENTRANCE DETAIL
(AT P.E. & F.E. LOCATIONS)

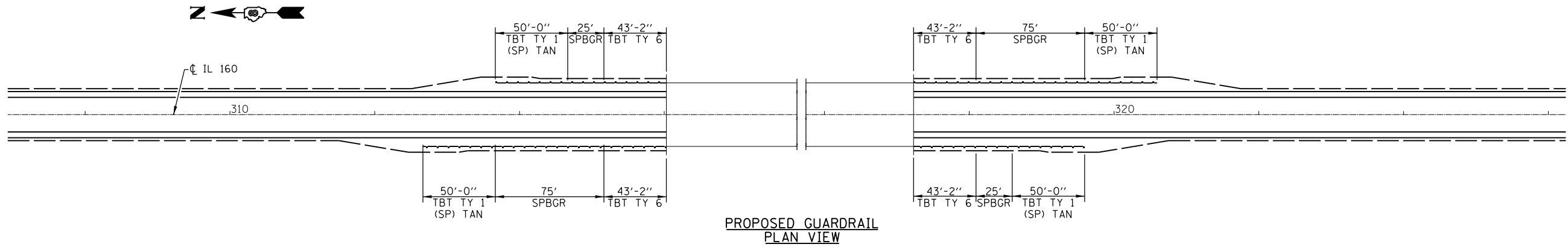
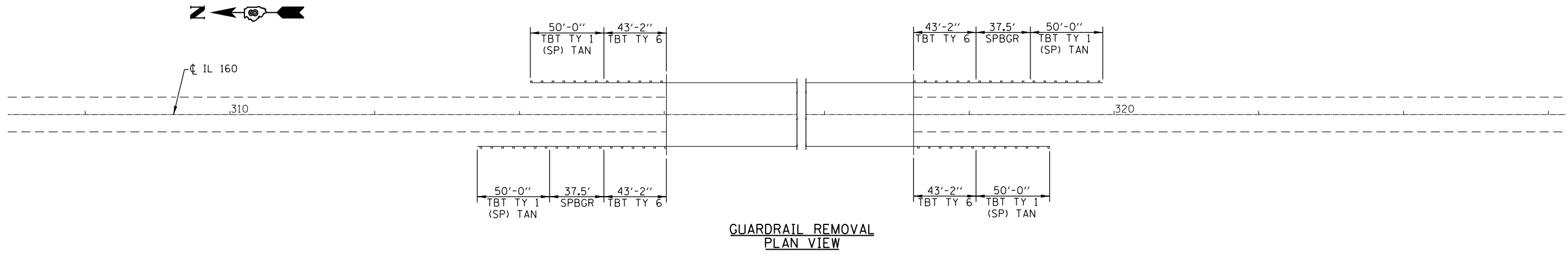
USER NAME = *USER*	DESIGNED -	REVISED -
	DRAWN -	REVISED -
PLOT SCALE = *SCALE*	CHECKED -	REVISED -
PLOT DATE = *DATE*	DATE -	REVISED -



Allen Henderson & Associates, Inc.
Civil and Structural Engineers Springfield, IL
62703 Phone: (217)544-8033 IL Design Firm
No. 184-001907

DETAILS		
SCALE: NONE	SHEET NO. 1 OF 1 SHEETS	STA. TO STA.

F.A.P. RTE.	SECTION	COUNTY	TOTAL SHEETS	SHEET NO.
310	(55,56)RS-3	GREENE	15	14
CONTRACT NO. 76H12				
FED. ROAD DIST. NO. ILLINOIS FED. AID PROJECT				



FILE NAME = *FILEL*	USER NAME = *USER*	DESIGNED -	REVISED -		Allen Henderson & Associates, Inc. Civil and Structural Engineers Springfield, IL 62703 Phone: (217)544-8033 IL Design Firm No. 184-001907			GUARDRAIL DETAILS			F.A.P. RTE.	SECTION	COUNTY	TOTAL SHEETS	SHEET NO.
	PLOT SCALE = *SCALE*	CHECKED -	REVISED -		REVISED -	310	(55,56)RS-3	GREENE	15	15	CONTRACT NO. 76H12		FED. ROAD DIST. NO.	ILLINOIS FED. AID PROJECT	
PLOT DATE = *DATE*	DATE -	REVISED -	REVISED -	SCALE: SHEET NO. 1 OF 1 SHEETS STA. TO STA.											