

F.A.P. RTE.	SECTION	COUNTY	TOTAL SHEETS	SHEET NO.
327	(14-12,14-13,14-14)-I	CLINTON	11	1
		ILLINOIS	CONTRACT NO. 76H22	

STATE OF ILLINOIS
DEPARTMENT OF TRANSPORTATION
DIVISION OF HIGHWAYS

**PROPOSED
HIGHWAY PLANS**

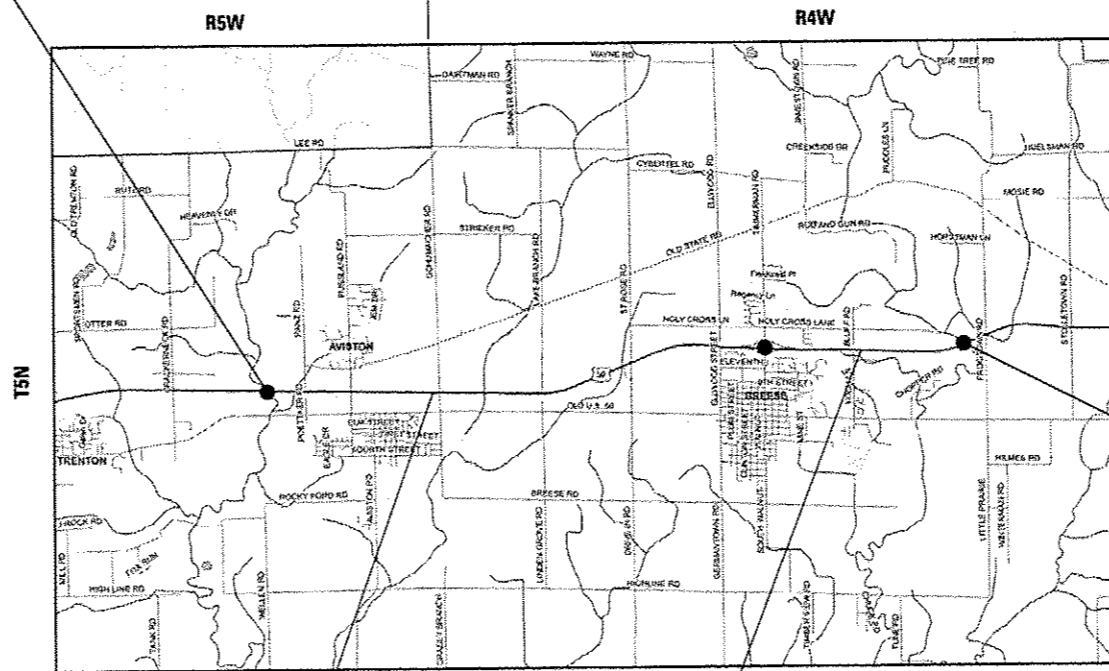
FAP ROUTE 327 (US 50)
SECTION (14-12, 14-13, 14-14)-I
CONCRETE PATCHING
CLINTON COUNTY

C-98-047-14

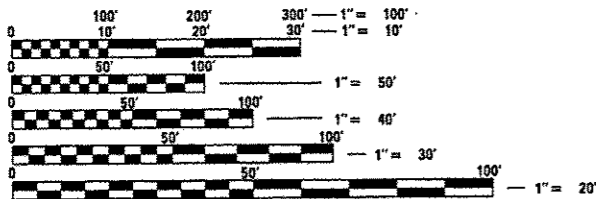
FOR INDEX OF SHEETS, SEE SHEET NO. 2



BEGIN PROJECT
SUGAR CREEK
LAT: 38.61605
LONG: -89.62999



END PROJECT
SHOAL CREEK
LAT: 38.62214
LONG: -89.48407



FULL SIZE PLANS HAVE BEEN PREPARED USING STANDARD ENGINEERING SCALES. REDUCED SIZED PLANS WILL NOT CONFORM TO STANDARD SCALES. IN MAKING MEASUREMENTS ON REDUCED PLANS, THE ABOVE SCALES MAY BE USED.

J.U.L.I.E.
JOINT UTILITY LOCATION INFORMATION FOR EXCAVATION
1-800-892-0123
OR 811

PROJECT ENGINEER: PATTI LeBEAU (618)346-3179
PROJECT MANAGER: BILLIE OWEN (618)346-3209

CONTRACT NO. 76H22

DESIGN DESIGNATION
N/A

2013 ADT = 6850 (ACTUAL)
2014 ADT = 6900 (ESTIMATED)
2034 ADT = 7900 (ESTIMATED)
SU = 6.9% MU = 8.7%

2013 ADT = 6000 (ACTUAL)
2014 ADT = 6050 (ESTIMATED)
2034 ADT = 7000 (ESTIMATED)
SU = 5.0% MU = 9.2%

GROSS LENGTH = 42,768 FT. = 8.1 MILE
NET LENGTH = 42,768 FT. = 8.1 MILE

STATE OF ILLINOIS
DEPARTMENT OF TRANSPORTATION
DIVISION OF HIGHWAYS

SUBMITTED April 11, 2014

Jeffrey Z. Ke...
DEPUTY DIRECTOR OF HIGHWAYS, REGION 5 ENGINEER

May 9, 2014
John D. Baranzelli PE
ENGINEER OF DESIGN AND ENVIRONMENT

May 9, 2014
Orlando Osman PE
DIRECTOR OF HIGHWAYS, CHIEF ENGINEER

**PRINTED BY THE AUTHORITY
OF THE STATE OF ILLINOIS**