

STATE OF ILLINOIS
DEPARTMENT OF TRANSPORTATION
DIVISION OF HIGHWAYS

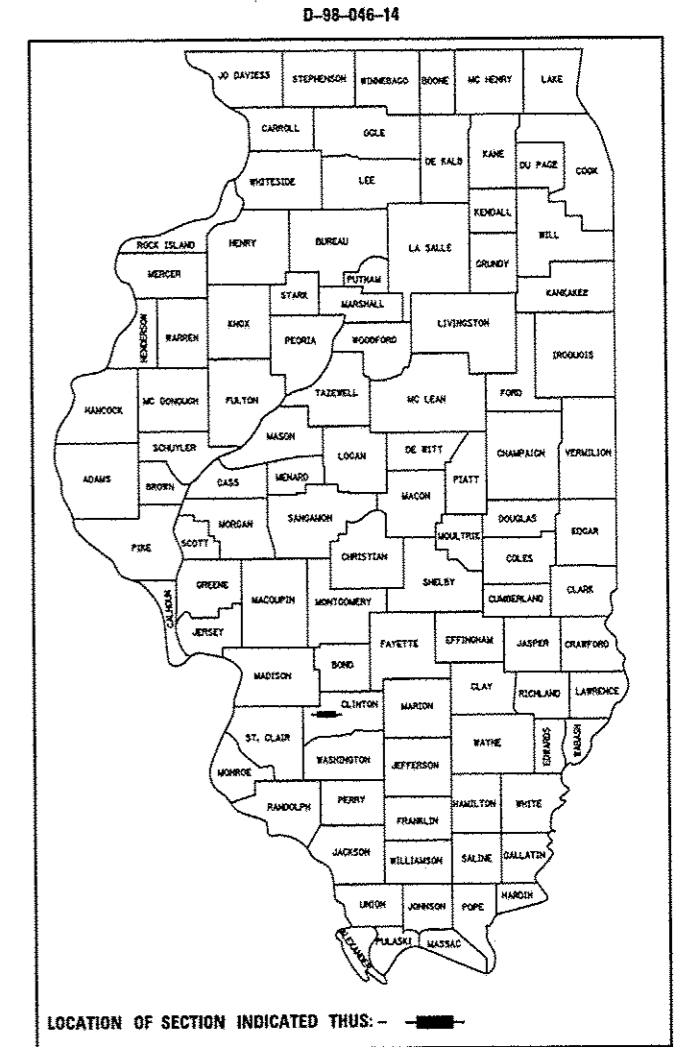
**PROPOSED
HIGHWAY PLANS**

FAP ROUTE 327 (US 50)
SECTION (14-12, 14-13, 14-14)-I
CONCRETE PATCHING
CLINTON COUNTY

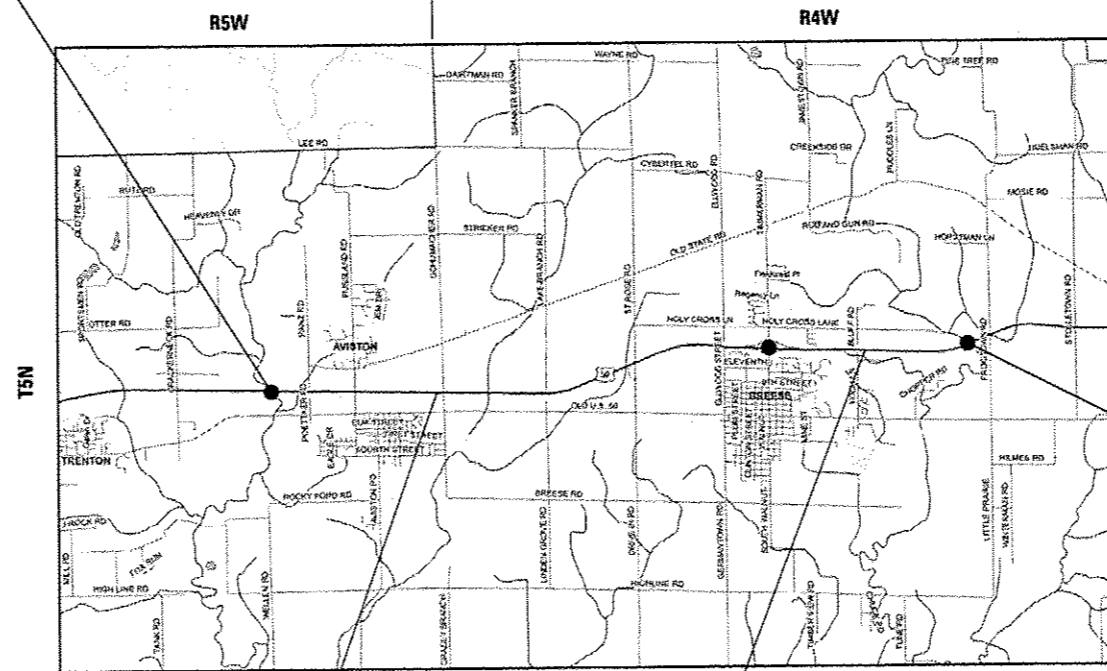
C-98-047-14

F.A.P. RTE.	SECTION	COUNTY	TOTAL SHEETS	SHEET NO.
327	(14-12,14-13,14-14)-I	CLINTON	11	1
		ILLINOIS	CONTRACT NO. 76H22	

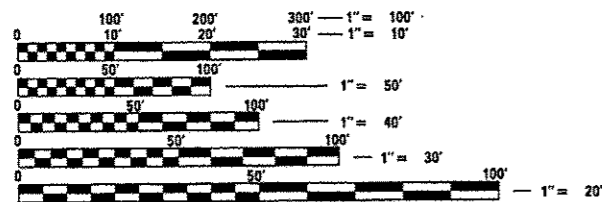
FOR INDEX OF SHEETS, SEE SHEET NO. 2



BEGIN PROJECT
SUGAR CREEK
LAT: 38.61605
LONG: -89.62999



END PROJECT
SHOAL CREEK
LAT: 38.62214
LONG: -89.48407



FULL SIZE PLANS HAVE BEEN PREPARED USING STANDARD ENGINEERING SCALES. REDUCED SIZED PLANS WILL NOT CONFORM TO STANDARD SCALES. IN MAKING MEASUREMENTS ON REDUCED PLANS, THE ABOVE SCALES MAY BE USED.

J.U.L.I.E.
JOINT UTILITY LOCATION INFORMATION FOR EXCAVATION
1-800-892-0123
OR 811

PROJECT ENGINEER: PATTI LeBEAU (618)346-3179
PROJECT MANAGER: BILLIE OWEN (618)346-3209

CONTRACT NO. 76H22

DESIGN DESIGNATION
N/A

2013 ADT = 6850 (ACTUAL)
2014 ADT = 6900 (ESTIMATED)
2034 ADT = 7900 (ESTIMATED)
SU = 6.9% MU = 8.7%

2013 ADT = 6000 (ACTUAL)
2014 ADT = 6050 (ESTIMATED)
2034 ADT = 7000 (ESTIMATED)
SU = 5.0% MU = 9.2%

GROSS LENGTH = 42,768 FT. = 8.1 MILE
NET LENGTH = 42,768 FT. = 8.1 MILE

STATE OF ILLINOIS
DEPARTMENT OF TRANSPORTATION
DIVISION OF HIGHWAYS

SUBMITTED April 11, 2014

Jeffrey Z. Ke...
DEPUTY DIRECTOR OF HIGHWAYS, REGION 5 ENGINEER

May 9, 2014
John D. Baranzelli PE
ENGINEER OF DESIGN AND ENVIRONMENT

May 9, 2014
Orlando Osman PE
DIRECTOR OF HIGHWAYS, CHIEF ENGINEER

PRINTED BY THE AUTHORITY
OF THE STATE OF ILLINOIS

GENERAL NOTES

1. ILLINOIS STATE LAW REQUIRES A 48-HOUR NOTICE TO BE GIVEN TO UTILITIES BEFORE DIGGING. FIELD MARKING OF FACILITIES MAY BE OBTAINED BY CONTACTING J.U.L.I.E. (1-800-892-0123 OR 811) OR FOR NON-MEMBERS THE UTILITY COMPANY DIRECTLY.
2. UTILITY INTERFERENCES ARE NOT ANTICIPATED ON THIS CONTRACT. IT SHALL BE THE CONTRACTOR'S RESPONSIBILITY TO COORDINATE HIS CONSTRUCTION ACTIVITIES WITH THE VARIOUS UTILITY OWNERS. ALL POTENTIAL CONFLICTS SHALL BE INVESTIGATED AND REMEDIAL ACTION TAKEN PRIOR TO INTERRUPTION OF THE CONTRACTOR'S PROGRESS. NO ADDITIONAL COST SHALL BE ADDED TO THE CONTRACT RESULTING FROM UTILITY CONFLICTS.
3. THE CONTRACTOR AND THE ENGINEER SHALL BE AWARE THAT NO SURVEY WAS PERFORMED FOR THIS PROJECT. THE STATIONING, TOPOGRAPHY, AND QUANTITIES SHOWN IN THE PLANS WERE CREATED USING MICROFILM AND FIELD MEASUREMENTS. ALL SHALL BE ASSUMED TO BE APPROXIMATE. THE CONTRACTOR SHALL VERIFY DIMENSIONS AND CONDITIONS IN THE FIELD PRIOR TO CONSTRUCTION AND ORDERING OF MATERIALS.
4. NO OVERNIGHT LANE CLOSURES WILL BE PERMITTED.
5. FLAGGERS SHALL BE REQUIRED AT ALL TIMES DURING PATCHING OPERATIONS.
6. ALL TURF AREAS DISTURBED BY THE CONTRACTOR SHALL BE SEEDED WITH THE APPROPRIATE EROSION CONTROL, AS DIRECTED BY THE ENGINEER, AT THE CONTRACTOR'S EXPENSE.
7. THE PROPOSED PAVEMENT MARKING SHALL MATCH THE LOCATIONS OF THE EXISTING PAVEMENT MARKING, AS DIRECTED BY THE ENGINEER.
8. RAISED REFLECTIVE PAVEMENT MARKER REMOVAL SHALL BE INCLUDED IN THE COST OF THE CORRESPONDING PATCHING PAY ITEM AND NO ADDITIONAL COMPENSATION WILL BE ALLOWED.

INDEX OF SHEETS

- 1 COVER SHEET
- 2 GENERAL NOTES, STANDARDS, INDEX OF SHEETS
- 3-4 SUMMARY OF QUANTITIES
- 5-7 TYPICAL SECTIONS
- 8-11 SCHEDULE OF QUANTITIES

STANDARDS

000001-06	701311-03
001001-02	701336-06
001006	701411-08
420001-07	701421-06
420701-02	701426-06
421001-02	701456-03
442001-04	701901-03
701201-04	780001-04
701301-04	781001-03

COMMITMENTS

NONE

FILE NAME =	USER NAME = chellandeeke	DESIGNED -	REVISED -	STATE OF ILLINOIS DEPARTMENT OF TRANSPORTATION	GENERAL NOTES, STANDARDS, INDEX OF SHEETS	F.A.P. RTE.	SECTION	COUNTY	TOTAL SHEETS	SHEET NO.	
c:\pwork\pados\chellandeeke\d0308112	0876422-ahg-annota.dgn	DRAWN -	REVISED -			327	(14-12,14-13,14-14)-1	CLINTON	11	2	
	PLOT SCALE = 100.0000 / 1/2	CHECKED -	REVISED -			CONTRACT NO. 76H22					
	PLOT DATE = 4/11/2014	DATE -	REVISED -			SCALE: NONE	SHEET NO. 1 OF 1 SHEETS	STA. TO STA.	FED. ROAD DIST. NO.	ILLINOIS FED. AID PROJECT	

CODE NO.	ITEM	UNIT	TOTAL QUANTITY	CONSTR. CODE
				100% STATE
				ROADWAY
				0005
				RURAL
44200517	CLASS A PATCHES, TYPE II, 7 INCH	SO YD	33	33
44200521	CLASS A PATCHES, TYPE III, 7 INCH	SO YD	81	81
44200523	CLASS A PATCHES, TYPE IV, 7 INCH	SO YD	87	87
44200525	CLASS A PATCHES, TYPE I, 8 INCH	SO YD	8	8
44200529	CLASS A PATCHES, TYPE II, 8 INCH	SO YD	956	956
44200533	CLASS A PATCHES, TYPE III, 8 INCH	SO YD	427	427
44200535	CLASS A PATCHES, TYPE IV, 8 INCH	SO YD	691	691
44200537	CLASS A PATCHES, TYPE I, 9 INCH	SO YD	4	4
44200541	CLASS A PATCHES, TYPE II, 9 INCH	SO YD	52	52
44200547	CLASS A PATCHES, TYPE IV, 9 INCH	SO YD	93	93
44213000	PATCHING REINFORCEMENT	SO YD	2245	2245
44213100	PAVEMENT FABRIC	SO YD	189	189
44213200	SAW CUTS	FOOT	16656	16656
44213204	TIE BARS 3/4"	EACH	347	347

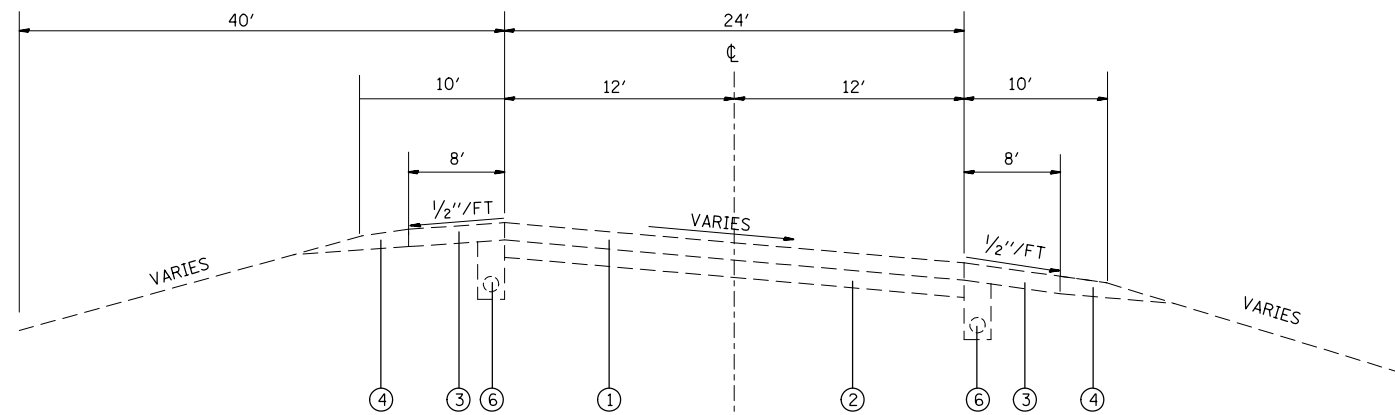
FILE NAME >	USER NAME = chellandaska	DESIGNED -	REVISED -
st:\p\work\pvsidot\chellandaska\0830812\0876H22-eh-500.dgn		DRAWN -	REVISED -
	PLOT SCALE = 100.0000' / 1" =	CHECKED -	REVISED -
	PLOT DATE = 4/11/2014	DATE -	REVISED -

**STATE OF ILLINOIS
DEPARTMENT OF TRANSPORTATION**

SUMMARY OF QUANTITIES

F.A.P. RTE.	SECTION	COUNTY	TOTAL SHEETS	SHEET NO.
327	(14-12,14-13,14-14)-1	CLINTON	11	3
SCALE: NONE		SHEET NO. 1 OF 2 SHEETS		STA. TO STA.
FED. ROAD DIST. NO.		ILLINOIS FED. AID PROJECT		

14

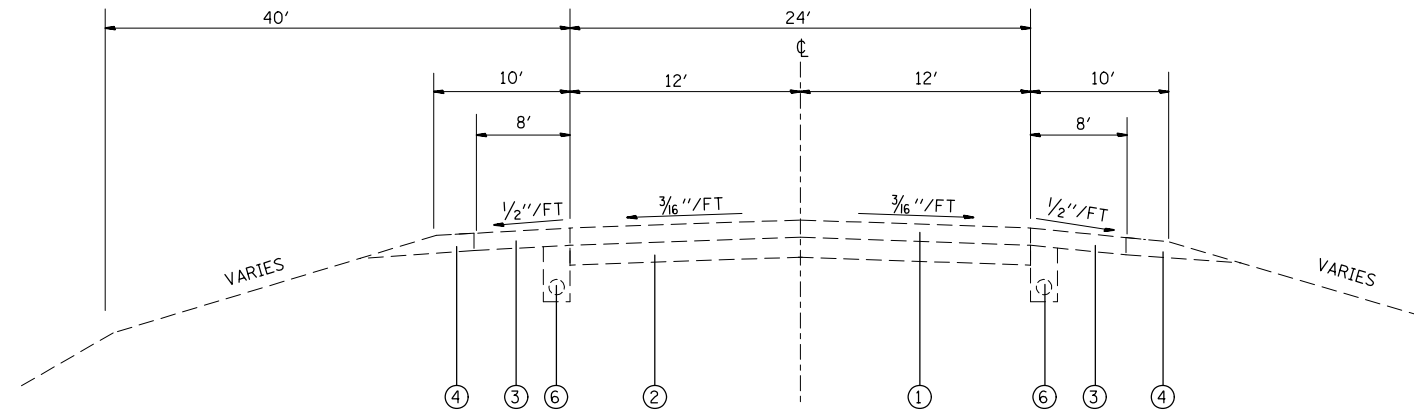


US ROUTE 50

0.000 TO 0.397
 2.958 TO 3.378
 •4.662 TO 5.097

- LEGEND**
- ① EXISTING CRPCC PAVEMENT 7", 8", OR 9" (SEE SCHEDULE)
 - ② EXISTING STABILIZED SUB-BASE CAM II 4"
 - ③ EXISTING P.C. CONCRETE SHOULDER 7", 8", OR 9" (SEE SCHEDULE)
 - ④ EXISTING AGGREGATE SHOULDER TYPE B
 - ⑤ EXISTING SRPCC PAVEMENT 8"
 - ⑥ EXISTING PIPE UNDERDRAINS 4"
 - EXISTING HMA SHOULDERS 8"

NOTE: WEST BRIDGE JOINT ON SHOAL CREEK = MP 0.000
 EAST BRIDGE JOINT OF PEEKS BRIDGE = MP 5.483
 EAST BRIDGE JOINT OF SUGAR CREEK = MP 7.934



US ROUTE 50

0.397 TO 2.958
 3.378 TO 4.002
 •4.002 TO 4.662
 •5.097 TO 7.934

DEPTH SCHEDULE			
MILE POINT	TO	MILE POINT	DEPTH
0.000	TO	0.025	BA
0.025	TO	0.892	7"
0.892	TO	1.399	8"
1.399	TO	2.141	8"
2.141	TO	2.166	BA
2.195	TO	2.220	BA
2.220	TO	2.918	8"
2.918	TO	3.524	8"
3.524	TO	4.002	9"
4.002	TO	7.934	8"

BA - BRIDGE APPROACH PAVEMENT (NO PATCHING)

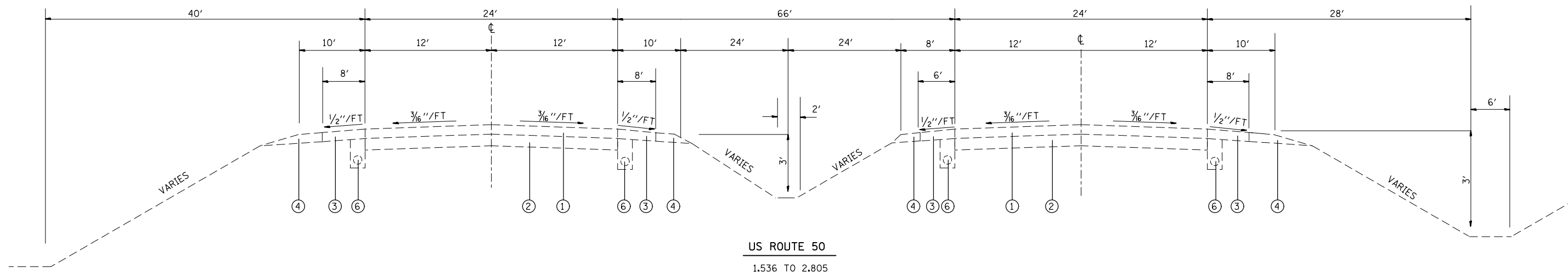
FILE NAME =	USER NAME = chollandeske	DESIGNED -	REVISED -
et:\pw\work\p\dot\chollandeske\d0388112\0876H22-sh-t\typicals.dgn		DRAWN -	REVISED -
	PLOT SCALE = 100.0000' / 1in.	CHECKED -	REVISED -
	PLOT DATE = 4/11/2014	DATE -	REVISED -

**STATE OF ILLINOIS
 DEPARTMENT OF TRANSPORTATION**

TYPICAL SECTIONS

SCALE: NONE SHEET NO. 1 OF 3 SHEETS STA. TO STA.

F.A.P. RTE.	SECTION	COUNTY	TOTAL SHEETS	SHEET NO.
327	(14-12, 14-13, 14-14)-I	CLINTON	11	5
FED. ROAD DIST. NO. 8 ILLINOIS FED. AID PROJECT			CONTRACT NO. 76H22	



LEGEND

- ① EXISTING CRPCC PAVEMENT 7", 8", OR 9" (SEE SCHEDULE)
- ② EXISTING STABILIZED SUB-BASE CAM II 4"
- ③ EXISTING P.C. CONCRETE SHOULDER 7", 8", OR 9" (SEE SCHEDULE)
- ④ EXISTING AGGREGATE SHOULDER TYPE B
- ⑤ EXISTING SRPCC PAVEMENT 8"
- ⑥ EXISTING PIPE UNDERDRAINS 4"
- EXISTING HMA SHOULDERS 8"

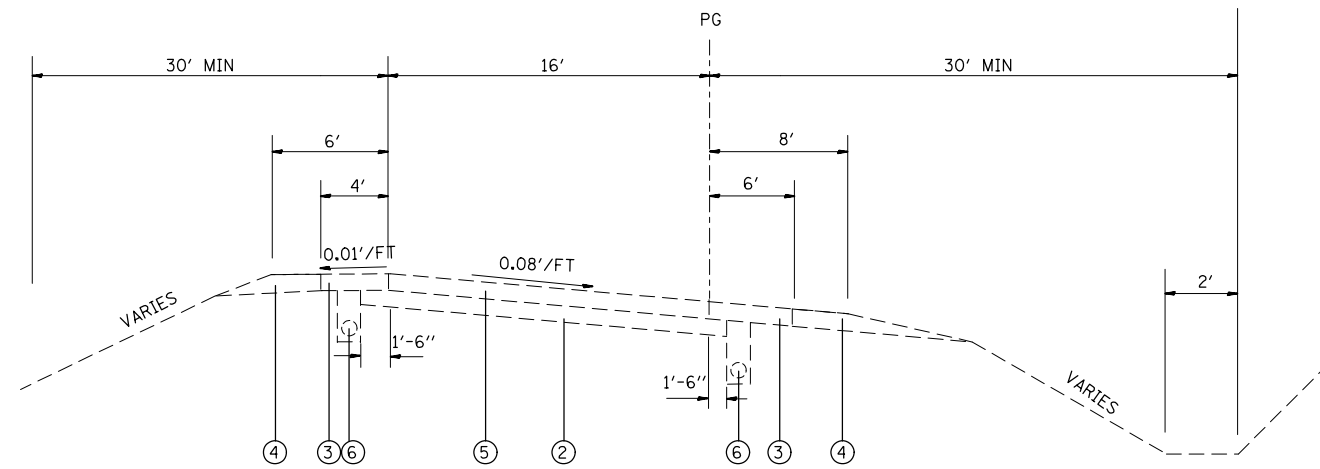
FILE NAME =	USER NAME = challandeske	DESIGNED -	REVISED -
et:\pw\work\p\dot\challandeske\d0388112\	D876H22-sh-t\typicals.dgn	DRAWN -	REVISED -
	PLOT SCALE = 100.0000' / in.	CHECKED -	REVISED -
	PLOT DATE = 4/11/2014	DATE -	REVISED -

**STATE OF ILLINOIS
DEPARTMENT OF TRANSPORTATION**

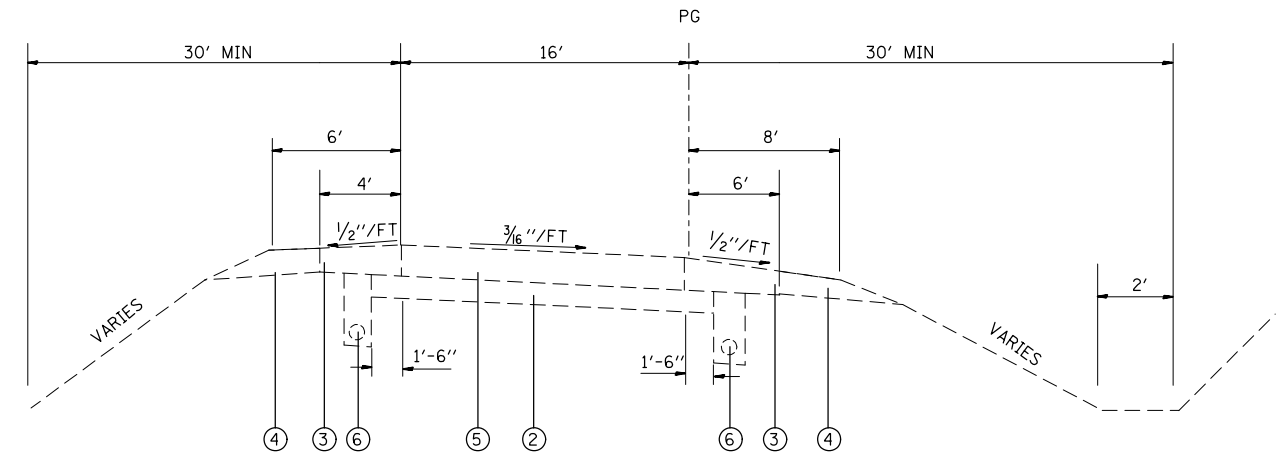
TYPICAL SECTIONS

SCALE: NONE SHEET NO. 2 OF 3 SHEETS STA. TO STA.

F.A.P. RTE.	SECTION	COUNTY	TOTAL SHEETS	SHEET NO.
327	(14-12, 14-13, 14-14)-I	CLINTON	11	6
FED. ROAD DIST. NO. 8 ILLINOIS FED. AID PROJECT			CONTRACT NO. 76H22	



TYPICAL SECTION
SUPERELEVATED RAMP



TYPICAL SECTION
RAMP TANGENT

LEGEND

- ① EXISTING CRPCC PAVEMENT 7", 8", OR 9" (SEE SCHEDULE)
- ② EXISTING STABILIZED SUB-BASE CAM II 4"
- ③ EXISTING P.C. CONCRETE SHOULDER 7", 8", OR 9" (SEE SCHEDULE)
- ④ EXISTING AGGREGATE SHOULDER TYPE B
- ⑤ EXISTING SRPCC PAVEMENT 8"
- ⑥ EXISTING PIPE UNDERDRAINS 4"
- EXISTING HMA SHOULDERS 8"

FILE NAME =	USER NAME = challandeske	DESIGNED -	REVISED -
et:\pw\work\p\dot\challandeske\d0388112\	D876H22-sh-typical.s.dgn	DRAWN -	REVISED -
	PLOT SCALE = 100.0000' / 1in.	CHECKED -	REVISED -
	PLOT DATE = 4/11/2014	DATE -	REVISED -

**STATE OF ILLINOIS
DEPARTMENT OF TRANSPORTATION**

TYPICAL SECTIONS

SCALE: NONE SHEET NO. 3 OF 3 SHEETS STA. TO STA.

F.A.P. RTE.	SECTION	COUNTY	TOTAL SHEETS	SHEET NO.
327	(14-12, 14-13, 14-14)-I	CLINTON	11	7
FED. ROAD DIST. NO. 8 ILLINOIS FED. AID PROJECT			CONTRACT NO. 76H22	

CLASS A PAVEMENT PATCHING SCHEDULE (SHOAL CREEK TO PEEKS BRIDGE)

MILE POINT	LANE		class a patches										SAW CUTS		TIE BARS EACH	PATCHING REINFORCEMENT SQ YDS	
	LTH.	WTH.	TY II- 7" SQ YDS	TY III- 7" SQ YDS	TY IV- 7" SQ YDS	TY I- 8" SQ YDS	TY II- 8" SQ YDS	TY III- 8" SQ YDS	TY IV- 8" SQ YDS	TY I- 9" SQ YDS	TY II- 9" SQ YDS	TY III- 9" SQ YDS	TY IV- 9" SQ YDS	HMA SHLDR FT			PCC SHLDR FT
WB 0.003	20	12													108		27
WB 0.366	6	12	8												66		8
WBS 0.604	6	10	7												58		7
WB 0.677	12	12		16											84		16
WBR 1.733	12	12						16							84		16
WBR 1.839	19	12													105		25
WBR 1.840	38	6													138	19	25
WBR 1.984	19	12													105		25
WBR 2.213	4	12							5						60		5
WBL 2.232	4	12							5						60		5
WBR 2.232	4	12							5						60		5
WBR 2.238	4	12							5						60		5
WBL 2.238	4	12							5						60		5
WBR 2.345	4	12							5						60		5
WBR 2.454	30	6						20							114	15	20
WBR 2.539	8	6							5						48		5
WBR 2.599	38	6													138	19	25
WBS 2.900	5	10							6						55		6
WB 4.040	19	12													87		25
WB 4.163	4	12							5						57		5
WB 4.202	4	12							5						57		5
WB 4.248	4	12							5						57		5
WB 4.262	4	12							5						57		5
WB 4.328	4	12							5						57		5
WB 4.448	4	12							5						57		5
WB 4.487	4	12							5						57		5
WB 4.501	4	12							5						57		5
WB 4.510	4	12							5						57		5
WB 4.514	4	12							5						57		5
WB 4.533	4	12							5						57		5
WB 4.565	4	12							5						57		5
WB 4.565	4	12							5						57		5
WB 4.592	4	12							5						57		5
WB 4.608	4	12							5						57		5
WB 4.616	4	12							5						57		5
WB 4.619	4	12							5						57		5
WB 4.625	4	12							5						57		5
WB 4.633	4	12							5						57		5
WB 4.658	4	12							5						57		5
WB 4.666	4	12							5						57		5
WB 4.721	4	12							5						57		5
WB 4.727	4	12							5						57		5
WB 4.732	4	12							5						57		5
WB 4.747	4	12							5						57		5
WB 4.797	4	12							5						57		5
WB 4.825	4	12							5						57		5
WB 4.831	4	12							5						57		5
WB 4.850	4	12							5						57		5
WB 4.870	4	12							5						57		5
WB 4.905	4	12							5						57		5
WB 4.947	4	12							5						57		5
WB 4.975	4	12							5						57		5
WB 5.051	4	12							5						57		5
WB 5.080	4	12							5						57		5
WB 5.125	4	12							5						57		5
WB 5.185	4	12							5						57		5
WB 5.221	4	12							5						57		5
WB 5.260	4	12							5						57		5
WB 5.286	14	12													77		19
WB 5.307	4	12							5						57		5
WB 5.380	4	12							5						57		5
WB 5.390	12	12													73		16
WB 5.398	4	12							5						57		5
WB 5.458	4	12							5							60	5
EB 0.003	8	12	11												72		11
EBR 0.027	30	6		20											114	15	20
EBR 0.046	25	12													123	13	33
SUBTOTAL THIS PAGE			25	36	60	0	272	71	127	0	0	0	0	2631	1832	81	591

CLASS A PAVEMENT PATCHING SCHEDULE CONTINUED (SHOAL CREEK TO PEEKS BRIDGE)

MILE POINT	LANE		class a patches										SAW CUTS		TIE BARS EACH	PATCHING REINFORCEMENT SQ YDS	
	LTH.	WTH.	TY II- 7" SQ YDS	TY III- 7" SQ YDS	TY IV- 7" SQ YDS	TY I- 8" SQ YDS	TY II- 8" SQ YDS	TY III- 8" SQ YDS	TY IV- 8" SQ YDS	TY I- 9" SQ YDS	TY II- 9" SQ YDS	TY III- 9" SQ YDS	TY IV- 9" SQ YDS	HMA SHLDR FT			PCC SHLDR FT
EBR 0.743	16	12		21											96		21
EBL 0.743	20	12			27										108		27
EBL 0.749	6	12	8												66		8
EBR 0.830	18	12		24											102		24
EBR 1.037	8	6					5								48		5
EBR 1.325	6	12											8		66		8
EBL 1.325	6	12											8		66		8
EBR 1.358	100	6													324	50	67
EBL 1.402	6	8											5		50		5
EBR 1.408	6	12											8		66		8
EB 1.461	40	6													144	20	27
EB 3.770	10	6											7		54		7
EB 3.780	10	6											7		54		7
EB 3.845	8	10											9		64		9
EB 3.920	6	6													42		4
EB 4.040	19	12							25						87		25
EB 4.119	4	12					5								57		5
EB 4.159	4	12					5								57		5
EB 4.199	4	12					5								57		5
EB 4.202	14	12							19						77		19
EB 4.224	4	12					5								57		5
EB 4.248	4	12					5								57		5
EB 4.290	4	12					5								57		5
EB 4.349	4	12					5								57		5
EB 4.387	4	12					5								57		5
EB 4.392	4	12					5								57		5
EB 4.401	4	12					5								57		5
EB 4.420	4	12					5								57		5
EB 4.423	4	12					5								57		5
EB 4.428	4	12					5								57		5
EB 4.484	4	12					5								57		5
EB 4.516	4	12					5								57		5
EB 4.528	4	12					5								57		5
EB 4.541	4	12					5								57		5
EB 4.566	4	12					5								57		5
EB 4.585	4	12					5								57		5
EB 4.592	4	12					5								57		5
EB 4.616	4	12					5								57		5
EB 4.649	15	12							20						79		20
EB 4.658	4	12					5								57		5
EB 4.666	4	12					5								57		5
EB 4.695	4	12					5								57		5
EB 4.708	4	12					5								57		5
EB 4.715	4	12					5								57		5
EB 4.729	4	12					5								57		5
EB 4.786	4	12					5								57		5
EB 4.815	4	12					5								57		5
EB 4.840	4	12					5								57		5
EB 4.850	4	12					5								57		5
EB 4.857	4	12					5								57		5
EB 4.907	4	12					5								57		5
EB 4.934	4	12					5								57		5
EB 4.975	4	12					5								57		5
EB 4.985	19	12							25						87		25
EB 5.002	4	12					5								57		5
EB 5.024	4	12					5								57		5
EB 5.051	4	12					5								57		5
EB 5.110	4	12					5								57		5
EB 5.126	4	12					5								57		5
EB 5.196	4	12					5								57		5
EB 5.277	4	12					5								57		5
EB 5.289	4	12					5								57		5
EB 5.310	4	12					5								57		5
EB 5.445	4	12					5								57		5
EB 5.458	4	12					5								57		5
SUBTOTAL			8	45	27	0	251	39	51	4	52	0	93	2952	1350	70	569
TOTAL			33	81	87	0	523	109	177	4	52	0	93	5583	3182	151	1160

East Bridge Joint of Peeks Bridge = 5.483
 West Bridge Joint on Shoal Creek = 0.000

CLASS A PAVEMENT PATCHING SCHEDULE (SUGAR CREEK TO PEEKS BRIDGE)

MILE POINT	LANE		CLASS A PATCHES				SAW CUTS FT	TIE BARS EACH	PATCHING REINFORCEMENT SQ YDS
	LTH.	WTH.	TY I- 8"	TY II- 8"	TY III- 8"	TY IV- 8"			
			SQ YDS	SQ YDS	SQ YDS	SQ YDS			
WB 5.534	12	12			16		73		16
WB 5.674	4	12		5			57		5
WB 5.698	4	12		5			57		5
WB 5.855	4	12		5			57		5
WB 6.036	4	12		5			57		5
WB 6.109	4	12		5			57		5
WB 6.232	4	12		5			57		5
WB 6.320	4	12		5			57		5
WB 6.389	4	12		5			57		5
WB 6.432	38	6				25	100	19	25
WB 6.471	4	12		5			57		5
WB 6.520	4	12		5			57		5
WB 6.810	4	12		5			57		5
WB 6.879	16	12			21		81		21
WB 6.924	4	12		5			57		5
WB 6.946	4	12		5			57		5
WB 6.984	4	12		5			57		5
WB 7.004	12	12			16		73		16
WB 7.028	38	6				25	101	19	25
WB 7.060	38	6				25	101	19	25
WB 7.080	5	10		6			51		6
WB 7.140	4	12		5			57		5
WB 7.330	4	12		5			57		5
WB 7.502	4	12		5			57		5
WB 7.685	4	12		5			57		5
WB 7.702	4	12		5			57		5
WB 7.738	4	12		5			57		5
WB 7.818	15	12			20		79		20
WB 7.823	6	12		8			61		8
WB 7.851	4	12		5			57		5
WB 7.915	4	12		5			57		5
EB 5.534	12	12			16		73		16
EB 5.576	18	12			24		85		24
EB 5.596	4	12		5			57		5
EB 5.601	4	12		5			57		5
EB 5.620	12	12			16		73		16
EB 5.683	4	12		5			57		5
EB 5.871	4	12		5			57		5
EB 5.887	4	12		5			57		5
EB 5.908	4	12		5			57		5
EB 5.964	4	12		5			57		5
EB 5.991	19	12				25	87		25
EB 6.003	13	12			17		75		17
EB 6.073	4	12		5			57		5
EB 6.087	19	12				25	87		25
EB 6.100	4	12		5			57		5
EB 6.122	19	12				25	87		25
EB 6.177	4	12		5			57		5
EB 6.191	19	12				25	87		25
EB 6.207	8	6		5			41		5
EB 6.282	6	12		8			61		8
EB 6.314	19	12				25	87		25
EB 6.321	14	12			19		77		19
EB 6.365	4	12		5			57		5
EB 6.382	19	12				25	87		25
EB 6.418	4	12		5			57		5
EB 6.432	4	12		5			57		5
EB 6.467	4	12		5			57		5
EB 6.480	8	6		5			41		5
SUBTOTAL THIS PAGE			0	224	165	228	3820	57	617

MILE POINT	LANE		CLASS A PATCHES				SAW CUTS FT	TIE BARS EACH	PATCHING REINFORCEMENT SQ YDS
	LTH.	WTH.	TY I- 8"	TY II- 8"	TY III- 8"	TY IV- 8"			
			SQ YDS	SQ YDS	SQ YDS	SQ YDS			
EB 6.504	4	12		5			57		5
EB 6.517	15	12			20		79		20
EB 6.522	4	12		5			57		5
EB 6.594	4	12		5			57		5
EB 6.652	4	12		5			57		5
EB 6.672	4	12		5			57		5
EB 6.753	4	12		5			57		5
EB 6.854	4	12		5			57		5
EB 6.860	4	12		5			57		5
EB 6.894	38	6				25	101	19	25
EB 6.924	8	6		5			41		5
EB 6.938	8	6		5			41		5
EB 6.955	6	6	4				37		4
EB 6.977	8	6		5			41		5
EB 7.085	38	6				25	101	19	25
EB 7.174	5	10		6			51		6
EB 7.199	19	12				25	87		25
EB 7.205	38	6				25	101	19	25
EB 7.244	4	12		5			57		5
EB 7.270	38	6				25	101	19	25
EB 7.278	4	12		5			57		5
EB 7.291	4	12		5			57		5
EB 7.299	6	6	4				37		4
EB 7.304	8	6		5			41		5
EB 7.357	8	6		5			41		5
EB 7.361	4	12		5			57		5
EB 7.369	38	6				25	101	19	25
EB 7.389	4	12		5			57		5
EB 7.398	4	12		5			57		5
EB 7.420	38	6				25	101	19	25
EB 7.431	4	12		5			57		5
EB 7.459	4	12		5			57		5
EB 7.555	4	12		5			57		5
EB 7.597	4	12		5			57		5
EB 7.687	15	12			20		79		20
EB 7.693	4	12		5			57		5
EB 7.699	4	12		5			57		5
EB 7.714	4	12		5			57		5
EB 7.728	4	12		5			57		5
EB 7.773	4	12		5			57		5
EB 7.851	4	12		5			57		5
EB 7.915	4	12		5			57		5
SUBTOTAL			8	166	40	177	2606	114	391
TOTAL			8	390	205	405	6426	171	1008

East Bridge Joint of Peeks Bridge = 5.483
 East Bridge Joint on Sugar Creek = 7.934

RAMP PATCHING SCHEDULE

MILE POINT	LANE		CLASS A PATCH				SAW CUTS FT	TIE BARS EACH	PAVEMENT FABRIC SQ YDS	PATCHING REINFORCEMENT SQ YDS
	LTH.	WTH.	TY I - 8" SQ YDS	TY II - 8" SQ YDS	TY III - 8" SQ YDS	TY IV - 8" SQ YDS				
RAMP A (WB On Ramp) 0.000 = at Jamestown Road edgeline										
0.017	4	14		6			68		6	
0.090	16	14			25		104		25	
0.098	4	14		6			68		6	
0.194	16	14			25		104		25	
RAMP B (EB Off Ramp) 0.000 = 1' Stub										
0.010	25	6			17		99	13		17
0.145	17	14				26	107		26	
0.181	4	14		6			68		6	
RAMP C (WB Off Ramp) 0.000 = at 1' Stub										
0.032	12	12			16		84			16
0.060	18	14				28	110			28
0.187	18	14				28	110		28	
0.230	4	14		6			68		6	
0.310	17	14				26	107		26	
0.348	4	14		6			68		6	
0.371	14	14			22		98		22	
0.378	4	14		6			68		6	
0.391	4	14		6			68		6	
RAMP D (EB On Ramp) 0.000 = at Jamestown Road edgeline										
0.012	24	6			16		96	12		16
0.109	4	14		6			68		6	
0.192	16	14			25		104		25	
0.248	12	14			18		92		19	
0.370	6	8		5			50		5	
TOTAL			0	43	113	109	1465	25	189	77

FILE NAME =	USER NAME = challandeske	DESIGNED -	REVISED -
et:\pw\work\p\dot\challandeske\d0388112\	D876H22-sh1-schedules.dgn	DRAWN -	REVISED -
	PLOT SCALE = 100.0000' / 1in.	CHECKED -	REVISED -
	PLOT DATE = 4/15/2014	DATE -	REVISED -

STATE OF ILLINOIS
DEPARTMENT OF TRANSPORTATION

PATCHING SCHEDULE

SCALE: NONE SHEET NO. 4 OF 4 SHEETS STA. TO STA.

F.A.P. RTE.	SECTION	COUNTY	TOTAL SHEETS	SHEET NO.
327	(14-12, 14-13, 14-14)-I	CLINTON	11	11
FED. ROAD DIST. NO. 8 ILLINOIS FED. AID PROJECT			CONTRACT NO. 76H22	