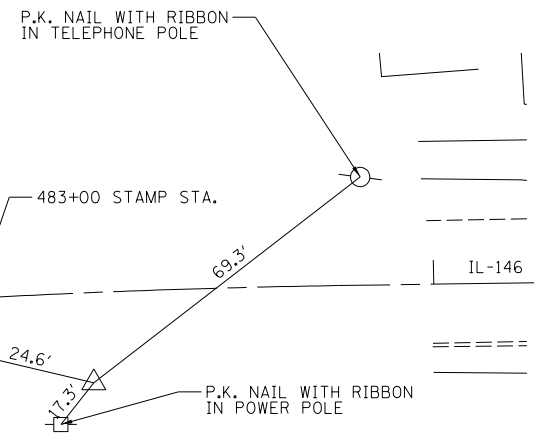
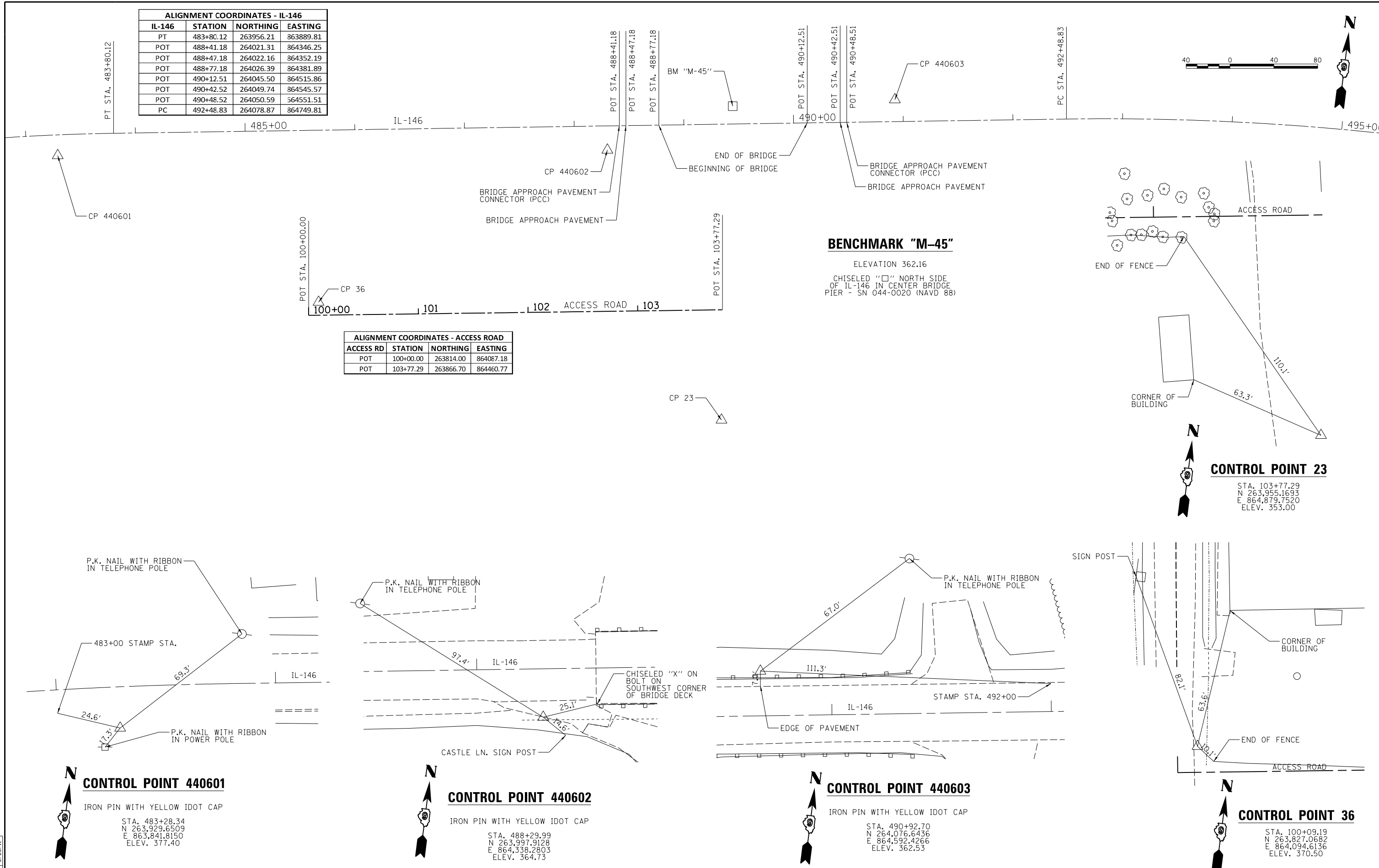


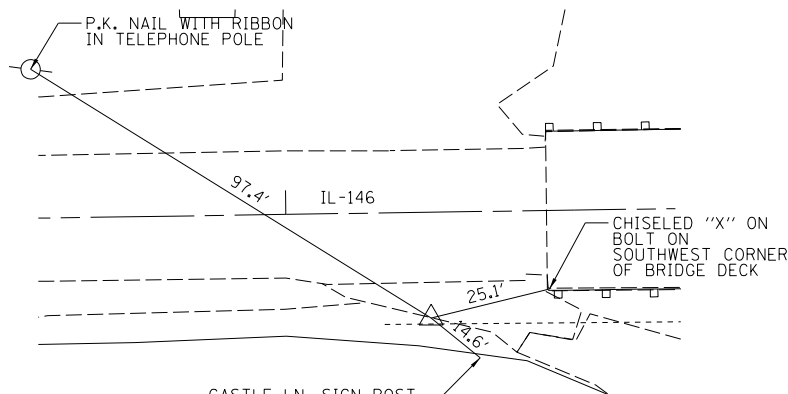
ALIGNMENT COORDINATES - IL-146			
IL-146	STATION	NORTHING	EASTING
PT	483+80.12	263956.21	863889.81
POT	488+41.18	264021.31	864346.25
POT	488+47.18	264022.16	864352.19
POT	488+77.18	264026.39	864381.89
POT	490+12.51	264045.50	864515.86
POT	490+42.52	264049.74	864545.57
POT	490+48.52	264050.59	864551.51
PC	492+48.83	264078.87	864749.81

ALIGNMENT COORDINATES - ACCESS ROAD			
ACCESS RD	STATION	NORTHING	EASTING
POT	100+00.00	263814.00	864087.18
POT	103+77.29	263866.70	864460.77



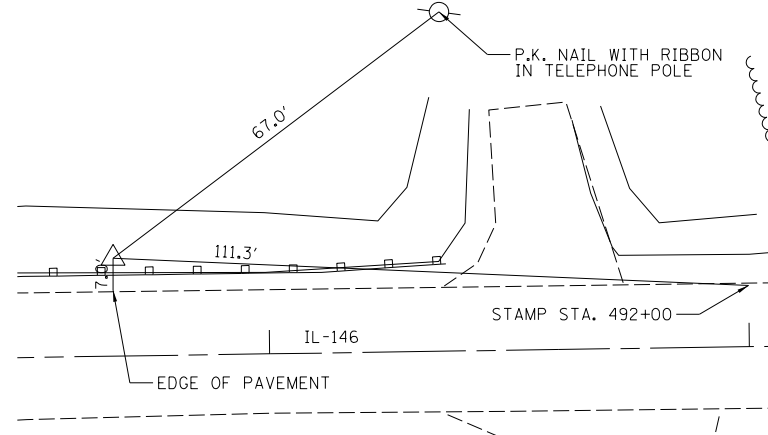
CONTROL POINT 440601

IRON PIN WITH YELLOW IDOT CAP
 STA. 483+28.34
 N 263,929.6509
 E 863,841.8150
 ELEV. 377.40



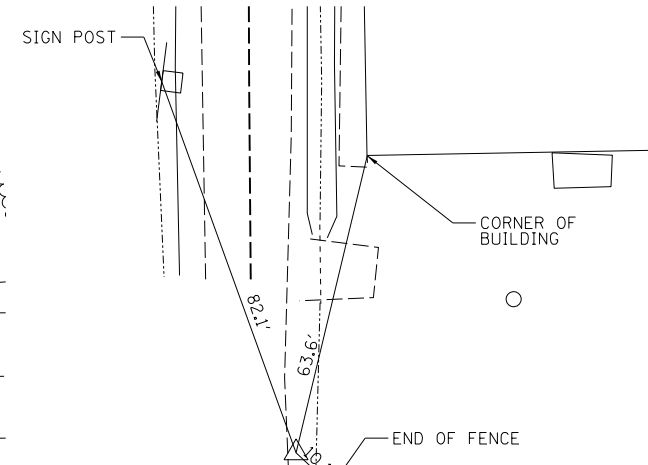
CONTROL POINT 440602

IRON PIN WITH YELLOW IDOT CAP
 STA. 488+29.99
 N 263,997.9128
 E 864,338.2803
 ELEV. 364.73



CONTROL POINT 440603

IRON PIN WITH YELLOW IDOT CAP
 STA. 490+92.70
 N 264,076.6436
 E 864,592.4266
 ELEV. 362.53



CONTROL POINT 36

IRON PIN WITH YELLOW IDOT CAP
 STA. 100+09.19
 N 263,827.0682
 E 864,094.6136
 ELEV. 370.50

LAYOUT	BKC	2/7/11
DRAWN	BKC	2/7/11
REVIEWED	MH	2/28/11

FILE NAME =	USER NAME = dwd01573	DESIGNED - BKC	REVISED -
p:\sp\svr\306.hanson.dom\hanson_projects\01d\documents\08h0131\W015-SN044-006118.dwg	PROJECT = 08h0131\W015-SN044-006118	CHECKED - MH	REVISED -
MODEL = 40 scale	DATE = 03/10/2014	DATE - 02/17/14	REVISED -

**STATE OF ILLINOIS
 DEPARTMENT OF TRANSPORTATION**

**ALIGNMENT, TIES, & BENCHMARKS
 IL-146 (OVER BAY CREEK)**

SCALE: SHEET NO. OF SHEETS STA. TO STA.

F.A.P. RTE.	SECTION	COUNTY	TOTAL SHEETS	SHEET NO.
885	110B-1	JOHNSON	52	9
CONTRACT NO. 78279				
FED. ROAD DIST. NO. ILLINOIS FED. AID PROJECT				