

## GENERAL NOTES

Fasteners shall be AASHTO A325 Type 1, mechanically galvanized bolts in painted areas and ASTM A325 Type 3 in unpainted areas. Bolts 7/8 in.  $\phi$ , holes 15/16 in.  $\phi$ , unless otherwise noted.

Calculated weight of Structural Steel = 88,430 lbs.

All structural steel shall be AASHTO M 270 Grade 50W.

No field welding is permitted except as specified in the contract documents.

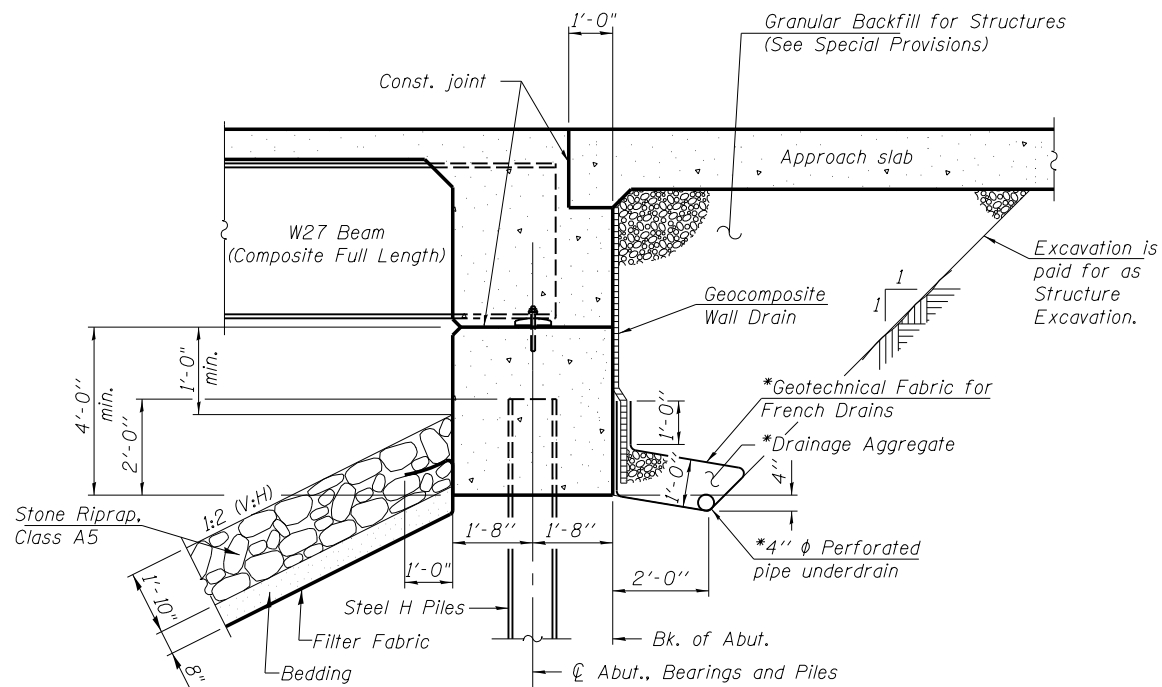
Reinforcement bars designated (E) shall be epoxy coated.

Bearing seat surfaces shall be constructed or adjusted to the designated elevations within a tolerance of 1/8 inch (0.01 ft.). Adjustment shall be made either by grinding the surface or by shimming the bearings.

Structural steel shall only be painted for a distance equal to the depth of embedment into the concrete cap plus 1'-6". Painted areas shall be primed in the shop with a Department approved zinc rich primer. Field painting will not be required.

Layout of slope protection system may be varied to suit ground conditions in the field as directed by the Engineer.

Slipforming of parapets is not allowed.



## SECTION THRU INTEGRAL ABUTMENT

\*Included in the cost of Pipe Underdrains for Structures. See Special Provisions.

Note:

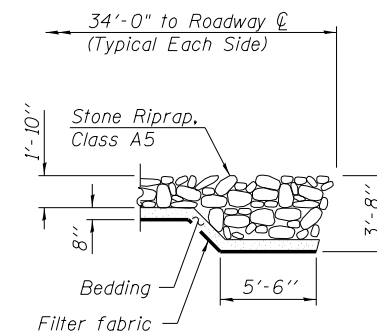
All drainage system components shall extend to 2'-0" from the end of each wingwall except an outlet pipe shall extend until intersecting with the side slope. The pipes shall drain into concrete headwalls. (See Artical 601.05 of the Standard Specifications and Highway Standard 601101)

## INDEX OF SHEETS

1. General Plan and Elevation
2. General Data
3. Substructure and Cofferdam Layout and Cofferdam Details
4. Stage Construction Details (Sheet 1 of 2)
5. Stage Construction Details (Sheet 2 of 2)
6. Temporary Concrete Barrier for Stage Construction
7. Top of Deck Elevations (Sheet 1 of 3)
8. Top of Deck Elevations (Sheet 2 of 3)
9. Top of Deck Elevations (Sheet 3 of 3)
10. Top of West Approach Slab Elevations
11. Top of East Approach Slab Elevations
12. Superstructure Plan and Deck Cross Section
13. Superstructure Details
14. West Integral Abutment Diaphragm Details
15. East Integral Abutment Diaphragm Details
16. Cast-In-Place Bridge Approach Slab Details (Sheet 1 of 2)
17. Cast-In-Place Bridge Approach Slab Details (Sheet 2 of 2)
18. Structural Steel - Framing Plan
19. Structural Steel - Details
20. Bearing Details
21. West Abutment
22. East Abutment
23. Pier Number 1
24. Pier Number 2
25. HP Pile Details
26. Bar Splicer Assembly and Mechanical Splicer Details
27. Cantilever Forming Brackets
28. Boring Logs (Sheet 1 of 2)
29. Boring Logs (Sheet 2 of 2)

## TOTAL BILL OF MATERIAL

ITEM	UNIT	SUPER	SUB	TOTAL
Stone Riprap, Class A5	Sq. Yd.	-	1052	1052
Filter Fabric	Sq. Yd.	-	1052	1052
Removal of Existing Structures	Each	-	-	1
Structure Excavation	Cu. Yd.	-	184	184
Cofferdam Excavation	Cu. Yd.	-	237	237
Cofferdam (Type 2) (Location - 1)	Each	-	1	1
Cofferdam (Type 2) (Location - 2)	Each	-	1	1
Concrete Structures	Cu. Yd.	21.6	169.1	190.7
Concrete Superstructure	Cu. Yd.	301.4	-	301.4
Bridge Deck Grooving	Sq. Yd.	648	-	648
Protective Coat	Sq. Yd.	844	-	844
Furnishing and Erecting Structural Steel	L. Sum	1	-	1
Stud Shear Connectors	Each	3600	-	3600
Reinforcement Bars, Epoxy Coated	Pound	69670	20720	90390
Bar Splicers	Each	632	128	760
Mechanical Splicers	Each	-	156	156
Furnishing Steel Piles HP14x89	Foot	-	1057	1057
Driving Piles	Foot	-	276	276
Test Pile Steel HP14x89	Each	-	1	1
Pile Shoes	Each	-	7	7
Name Plates	Each	1	-	1
Anchor Bolts, 3/4"	Each	24	-	24
Anchor Bolts, 1"	Each	24	-	24
Geocomposite Wall Drain	Sq. Yd.	-	57	57
Granular Backfill for Structures	Cu. Yd.	-	107	107
Asbestos Bearing Pad Removal	Each	-	44	44
Pipe Underdrains for Structures 4"	Foot	-	139	139
Setting Piles in Rock	Each	-	23	23
Temporary Soil Retention System	Sq. Ft.	-	210	210



## SECTION B-B

STATION 489+44.85  
 BUILT 2014 BY  
 STATE OF ILLINOIS  
 F.A.P. RT. 885 SEC. 110B-1  
 LOADING HL93  
 STR. NO. 044-0061

## NAME PLATE

See Std. 515001

c:\working\dms24893\0978279-stit-bridge.dgn

PROFESSIONAL DESIGN FIRM LICENSE #184-001084  
 © Copyright Hanson Professional Services Inc. 2014

USER NAME =	DESIGNED -	REVISD -
dowd01573	JGT	-
CHECKED -	TEH	REVISD -
PLOT SCALE =	DRAWN -	REVISD -
RoD	-	-
PLOT DATE = 03/01/2014 10:50:23 AM	CHECKED -	REVISD -
	JGT	-

STATE OF ILLINOIS  
 DEPARTMENT OF TRANSPORTATION

GENERAL DATA  
 STRUCTURE NO. 044-0061

SHEET NO. 02 OF 29 SHEETS

F.A.P. RTE.	SECTION	COUNTY	TOTAL SHEETS	SHEET NO.
885	110B-1	JOHNSON	52	25
CONTRACT NO.			78279	
ILLINOIS FED. AID PROJECT				