

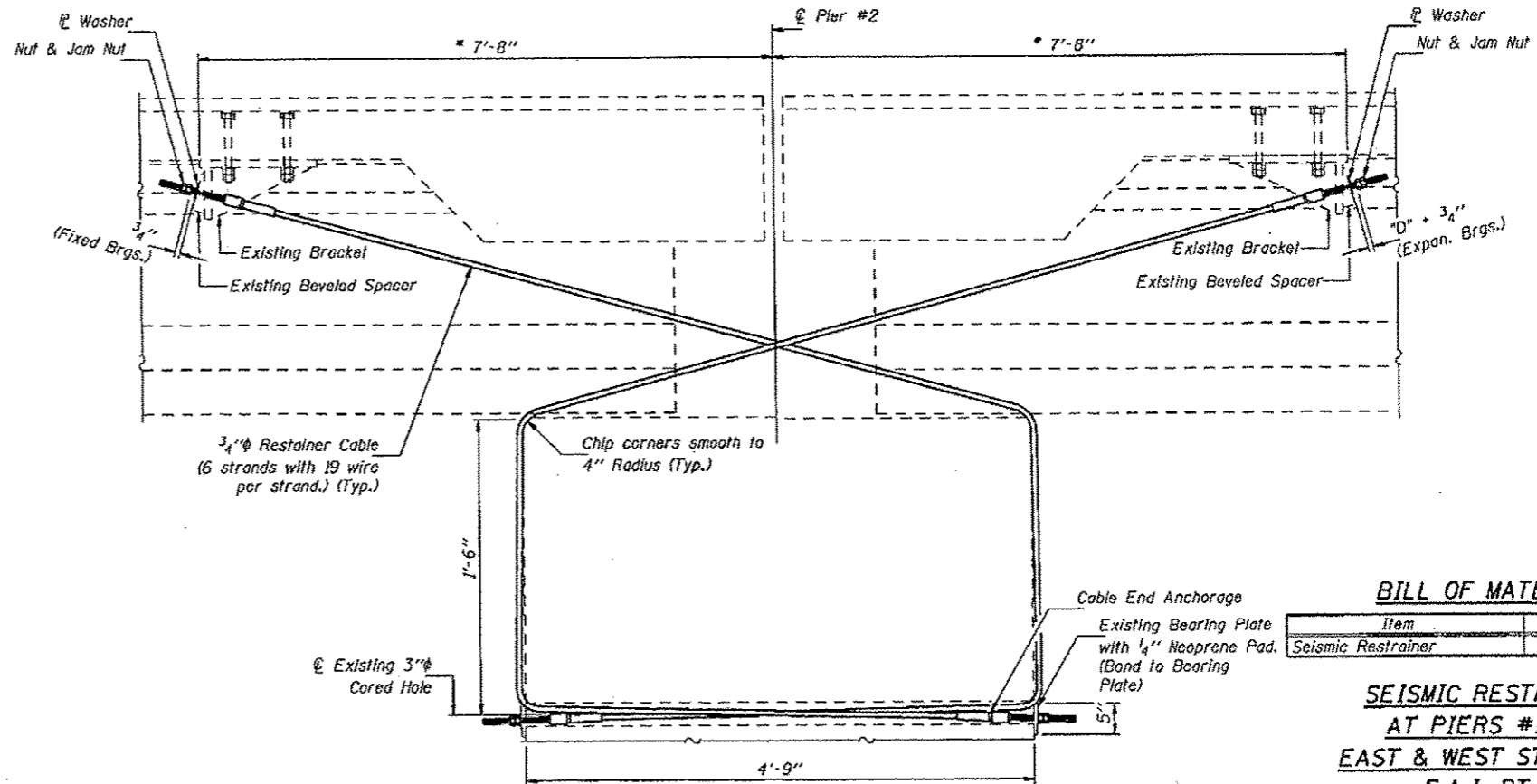
PLAN - PIERS #2
(Showing location of Seismic Restrainers)
(Pier #1 similar)

SEISMIC RESTRAINER NOTES

All nuts and washers shall be galvanized in accordance with A.S.T.M. A153.
 Cables shall be Class C, galvanized in accordance with A.S.T.M. A741.
 Cable shall be 3/4" diameter preformed, 6 x 19 wire strand core or independent wire rope core, minimum breaking strength, 46 Kips in accordance with A.S.T.M. A603.
 Cost of cables, cable end anchorages, washers and nuts including removal of the existing and installation of the new restrainers will be paid for at the unit bid price each for "SEISMIC RESTRAINER".
 Each "SEISMIC RESTRAINER" consists of 3/4" diameter Restrainer Cable with 2 end anchorage assemblies and misc. hardware.
 For details of the 3/4" diameter Restrainer Cable Ends, existing Beveled Spacer and existing Bearing Plate (including neoprene pad) see sheet #7 of 7.

SEISMIC RESTRAINER INSTALLATION PROCEDURES

- 1.) Locate and install cables snug tight.
- 2.) For Restrainers at fixed bearings, back off the nut at bracket end of cable by 3/4".
- 3.) For Restrainers at expansion bearings, back off the nut at bracket end of cable by "D" + 3/4".
 "D" = + 1/8" per 100' of expansion length for every 15° F. temperature rise above 50° F. Normal Temperature.
 "D" = - 1/8" per 100' of expansion length for every 15° F. temperature drop below 50° F. Normal Temperature.
- 4.) Tighten jam nuts.



SECTION C-C
* Estimated. Contractor required to check actual length.

BILL OF MATERIAL

| Item | Unit | Total |
|--------------------|------|-------|
| Seismic Restrainer | Each | 24 |

SEISMIC RESTRAINERS
AT PIERS #1 & #2
EAST & WEST STRUCTURES
F.A.I. RT. 57
PULASKI COUNTY
STATION 881+37.61

| | | | | | | | | | | |
|---|------------------------|------------|-----------|---|-------------------------------------|---------------------------|----------------------------------|----------------|----------------|-------------|
| FILE NAME = | USER NAME = halssteadw | DESIGNED - | REVISED - | STATE OF ILLINOIS DEPARTMENT OF TRANSPORTATION | SCALE: SHEET OF SHEETS STA. TO STA. | F.A.I. RTE. 57 | SECTION 09 SEISMIC MAINT. 2014-1 | COUNTY PULASKI | TOTAL SHEETS 7 | SHEET NO. 6 |
| al:\pe_work\spc\dot\halssteadw\0170813187-0001_0002-ah\plan.dgn | | DRAWN - | REVISED - | | | ILLINOIS FED. AID PROJECT | | | | |
| Default | | CHECKED - | REVISED - | | | | | | | |
| | | DATE - | REVISED - | | | | | | | |