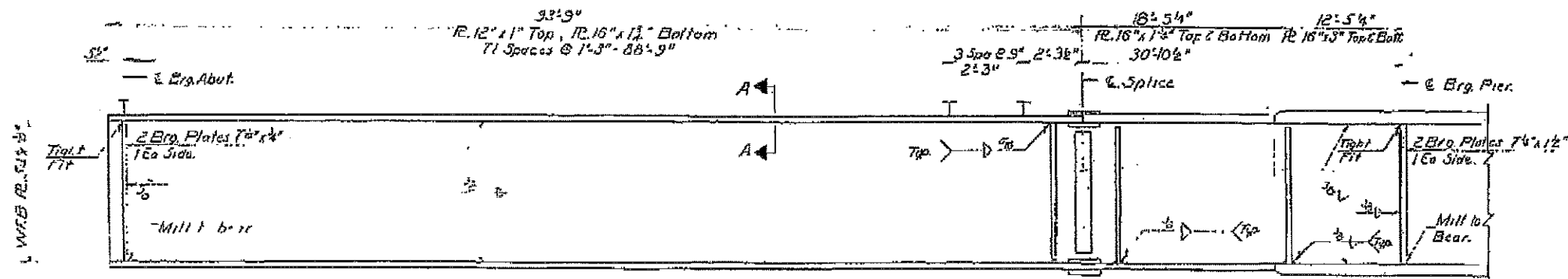
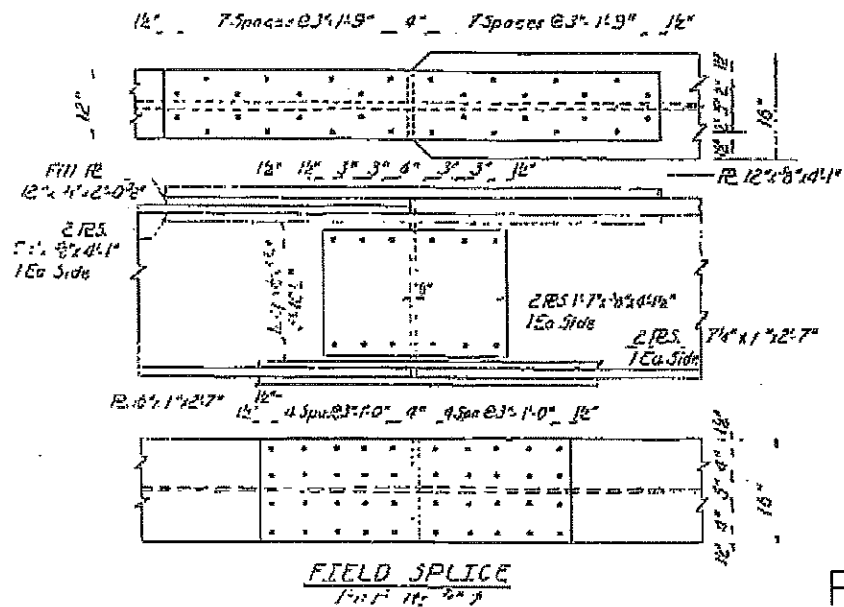
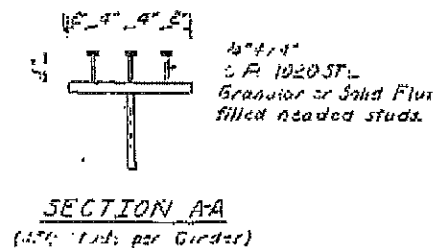


DESIGNER	DATE	PROJECT	SHEET NO.	TOTAL SHEETS
JOHNSON	127	54	21	21



GIRDER HALF ELEVATION



Note: If transition between chord #1 and splice #2 shall be 5'-0" or to bottom of chord #2 as per all other notes with splice #11 shall be 5'-0" top and 8'-0" bottom at all times.
Work this sheet with sheet No. 13

DESIGNED	EXAMINED
CHECKED	APPROVED
DRAWN	
CHECKED	

STRUCTURAL STEEL
F.A.I. PT. 24 SEC. 13-CHB-1
JOHNSON COUNTY
STA. 203 + 80.86

FOR INFORMATION ONLY

FILE NAME	USER NAME	DESIGNED	REVISED	STATE OF ILLINOIS DEPARTMENT OF TRANSPORTATION	044-0031 IL 37 OVER 1-24	F.A. RTE.	SECTION	COUNTY	TOTAL SHEETS	SHEET NO.
Default	plandgn	DRAWN	REVISED			VAR.	D9 BRIDGE PAINT 2014-2	*	22	TA
		CHECKED	REVISED		SCALE:	SHEET	OF	SHEETS	STA.	TO STA.
		DATE	REVISED							
										CONTRACT NO. 78419
										ILLINOIS FED. AID PROJECT