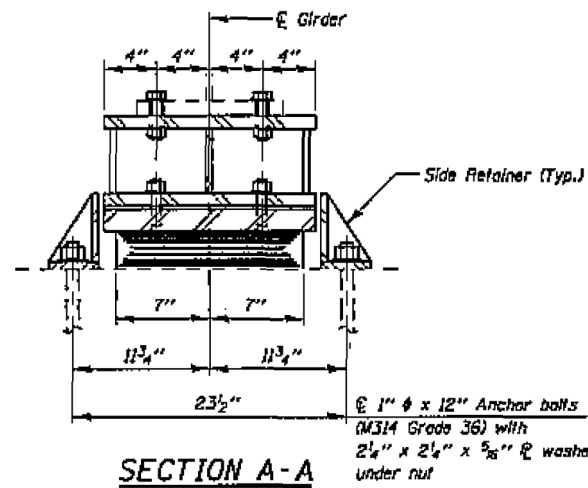


ELEVATION AT ABUT.



SECTION A-A

TYPE I ELASTOMERIC EXP. BRG.

Girder Reactions

R DL	35 Kips
R SDL	8 Kips
R LL	52 Kips
R Imp.	12 Kips
R (Total)	107 Kips

Notes:

Anchor bolts shall be ASTM F1554 all-thread (or an Engineer-approved alternate material) of the grade(s) and diameter(s) specified. The corresponding specified grade of ASTM A307 anchor bolts may be used in lieu of ASTM F1554.

Drilled and set anchor bolts shall be installed according to Article 521.06 of the Standard Specifications.

Side retainers and other steel members required for the elastomeric bearing assembly shall be included in the cost of Elastomeric Bearing Assembly, Type I.

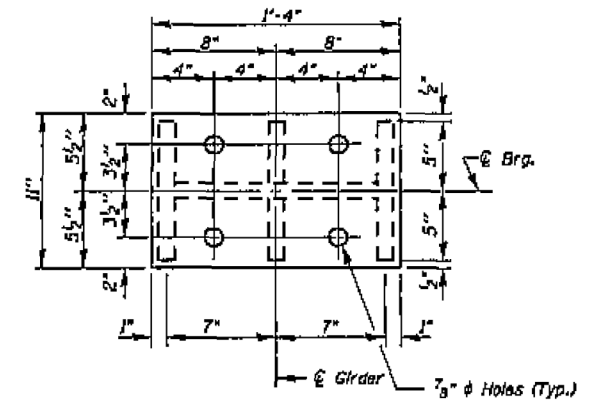
The minimum jack capacity required is 60 Tons.

Existing cross frame removal and reinstallation may be required to facilitate drilling holes. Cost to be included with JACK AND REMOVE EXISTING BEARINGS.

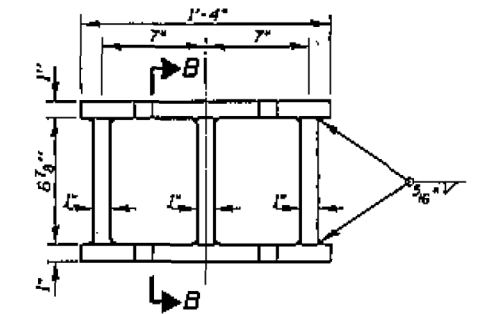
Prior to ordering any material, the Contractor shall verify in the field all bearing height and shim thickness dimensions.

Two $\frac{1}{8}$ in. adjusting shims shall be provided for each bearing in addition to all other plates or shims and placed as shown on bearing details.

New steel extensions, connection bolts, F.H. ϕ 's and Shim ϕ 's are included in FURNISHING AND ERECTING STRUCTURAL STEEL.



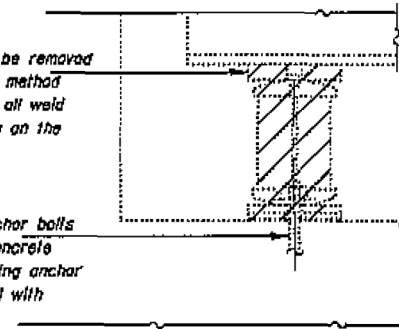
PLAN-TOP & BOTTOM PLATE



STEEL EXTENSION DETAIL

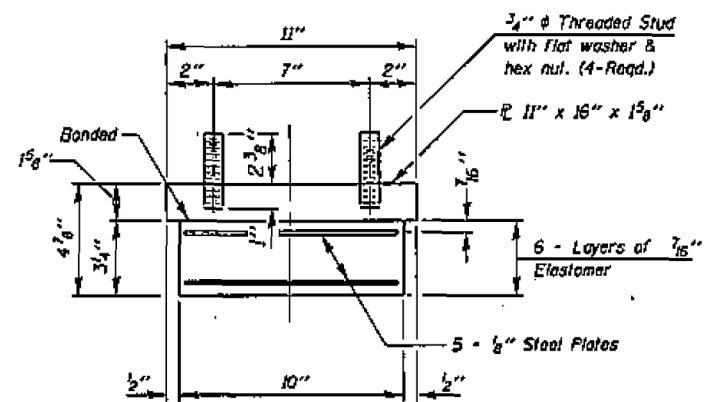
Existing Plate to be removed using the dir-arc method and grind smooth all weld material remaining on the bottom flange.

Burn the existing anchor bolts flush with existing concrete surface. Grind existing anchor bolts smooth and seal with epoxy.



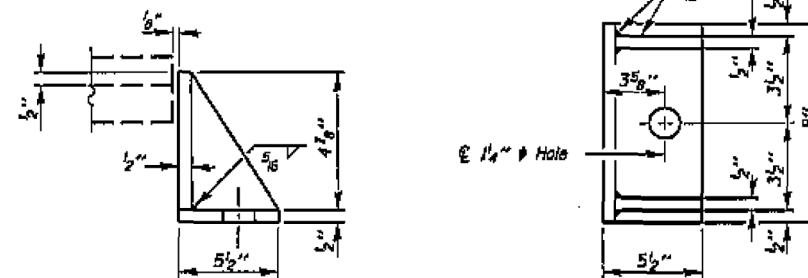
EXISTING BEARING REMOVAL DETAIL

Cost is Included with Jack and Remove Existing Bearings



BEARING ASSEMBLY

Note:
Shim plates shall not be placed under Bearing Assembly.



SIDE RETAINER

Equivalent rolled angle with stiffeners will be allowed in lieu of welded plates.

SECTION B-B

BILL OF MATERIAL

Item	Unit	Total
Elastomeric Bearing Assembly Type I	Each	24
Anchor Bolts, 1"	Each	48
Jack and Remove Existing Bearings	Each	24

BEARING DETAILS
STRUCTURE NO. 064-0029

FOR INFORMATION ONLY

FILE NAME =	USER NAME = Dahmer,ja	DESIGNED -	REVISED -
et:\pw\work\p\dahmer\ja\0384974\78499-shr-p\len.dgn		DRAWN -	REVISED -
Default	PLOT SCALE = 2.6865' / in.	CHECKED -	REVISED -
	PLOT DATE = 3/20/2014	DATE -	REVISED -

STATE OF ILLINOIS
DEPARTMENT OF TRANSPORTATION

064-0029		F.A. RTE.	SECTION	COUNTY	TOTAL SHEETS	SHEET NO.
US 45 OVER I-24		VAR.	D9 BRIDGE PAINT 2014-2	*	22	20
SCALE:	SHEET	OF	SHEETS	STA.	TO	STA.

* VARIOUS COUNTIES						
CONTRACT NO. 78419						
ILLINOIS FED. AID PROJECT						