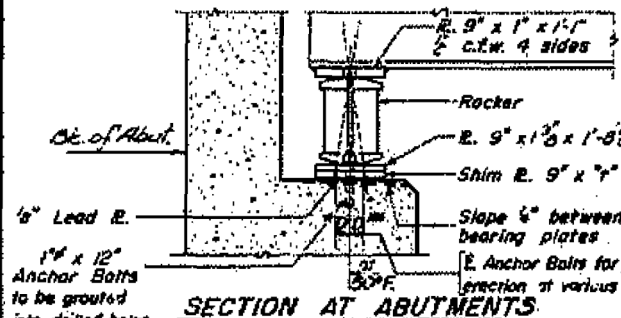
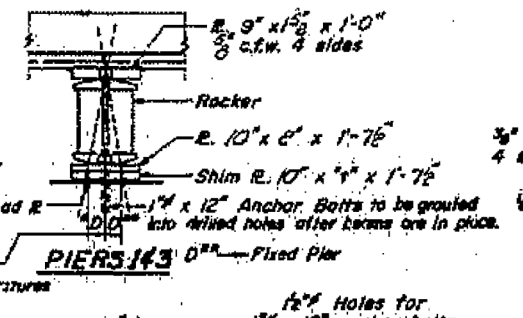


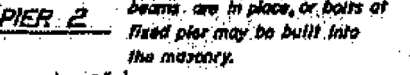
FRAMING PLAN



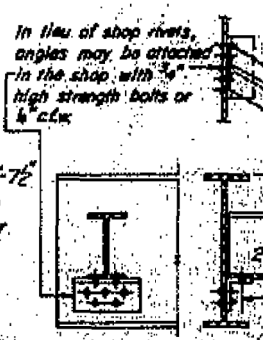
SECTION AT ABUTMENTS



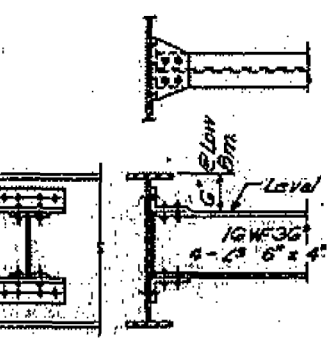
PIER 2



PIER 2



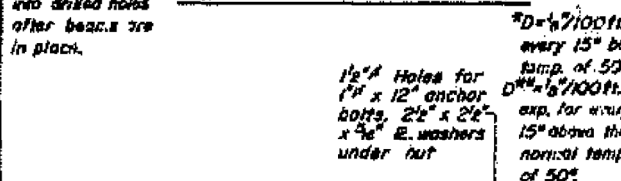
DETAIL OF COVER PLATE



DIAPHRAGM D1 & D2

ELEVATION TOP OF 36 WF 150 BMS.

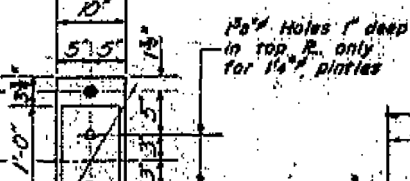
Loc.	E Org. W. Abut.	E Org. Pier 1	E Spl. A	E Spl. B	E Org. Pier 2
1	367345	367388	367408	367484	367489
2	367408	367451	367466	367501	367497
3	367468	367516	367531	367568	367525
4	367529	367579	367594	367639	367633
5	367609	367661	367676	367721	367720
6	367678	367731	367746	367791	367789
7	367749	367801	367816	367861	367859
8	367825	367877	367892	367937	367937
9	367891	367943	367958	368003	367997



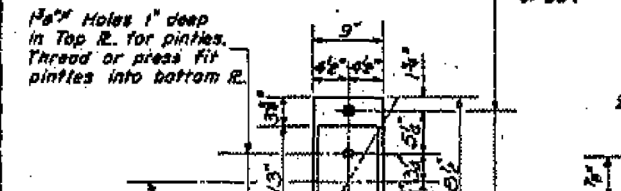
PLAN



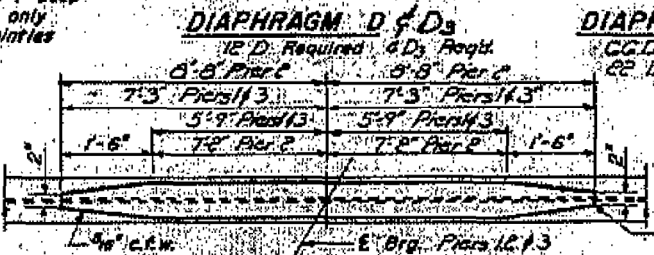
PLAN



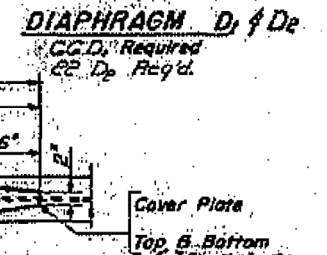
PLAN



DETAIL OF PINTLE



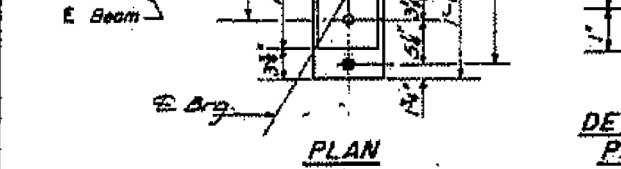
DETAIL OF COVER PLATE



DIAPHRAGM D1 & D2

SHIM Y-DIMENSIONS

Loc.	West Abut.	Pier 1	Pier 2	Pier 3	East Abut.
1					
2					
3					
4					
5					
6					
7					
8					
9					



PLAN



DETAIL OF ROCKER AT PIERS 1 & 3



DETAIL OF BOLSTER AT PIER 2

DESIGNED: J. P. McNeil - mazzoni
CHECKED: R.G. Borman
DRAWN: W.A. Sasseman Jr. J.S.
CHECKED: DEL. K.P.F.

EXAMINED: S. J. ...
PHASED: ...
APPROVED: ...

DETAIL OF ROCKER AT PIERS 1 & 3 ABUTMENTS

DETAIL OF BOLSTER AT PIER 2

DETAIL OF SPLICE

STRUCTURAL STEEL
FAS RT 37 SEC 77-4HB-1
PULASKI COUNTY
STA 756149.78