

DEPARTMENT OF TRANSPORTATION  
DIVISION OF HIGHWAYS

PLANS FOR PROPOSED  
LOCAL AGENCY IMPROVEMENT  
FEDERAL-AID SECONDARY PROJECT

WESLEY ROAD GUARDRAIL  
SECTION: 12-00043-00-GR  
PROJECT: HSIP-5093(168)  
VILLAGE OF CREVE COEUR  
TAZEWELL COUNTY  
C-94-009-13

INDEX OF SHEETS

- 1 COVER SHEET
- 2 SUMMARY OF QUANTITIES, GENERAL NOTES,  
HORIZONTAL/VERTICAL CONTROL, LEGEND
- 3 TYPICAL SECTIONS
- 4 SCHEDULE OF QUANTITIES
- 5-6 PLAN SHEETS
- 7-8 DISTRICT 4 GUARDRAIL EROSION CONTROL TREATMENTS

HIGHWAY STANDARDS

- 630001-10 STEEL PLATE BEAM GUARDRAIL
- 635006-03 REFLECTOR AND TERMINAL MARKER PLACEMENT
- 635011-02 REFLECTOR MARKER AND MOUNTING DETAILS
- 701901-03 TRAFFIC CONTROL DEVICES
- BLR 21-8 TYPICAL APPLICATION OF TRAFFIC CONTROL DEVICES  
FOR CONSTRUCTION ON RURAL HIGHWAYS

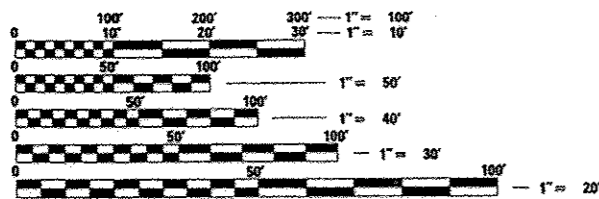
UTILITIES

ATT/DISTRIBUTION  
630-573-5450

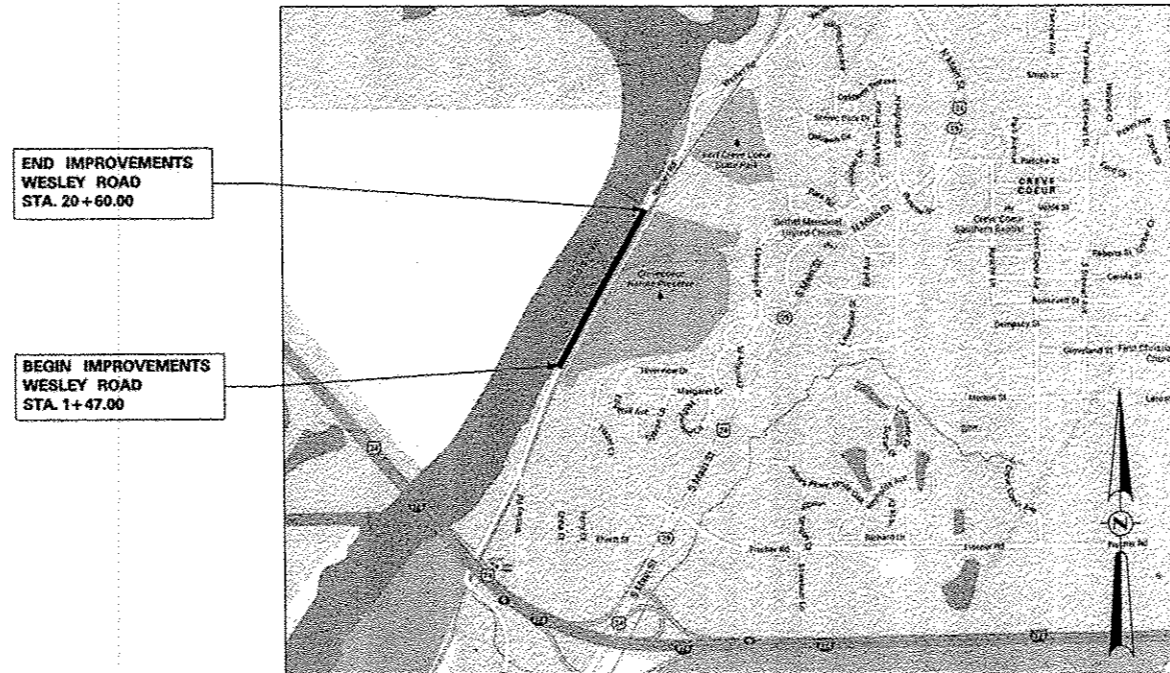
AMEREN CILCO  
KENT KOWALSKIE  
309-686-2616

VILLAGE OF CREVE COEUR  
WATER - MARK MENARD  
309-613-3155

VILLAGE OF CREVE COEUR  
SANITARY - JEFF SHEPLER  
309-694-4101



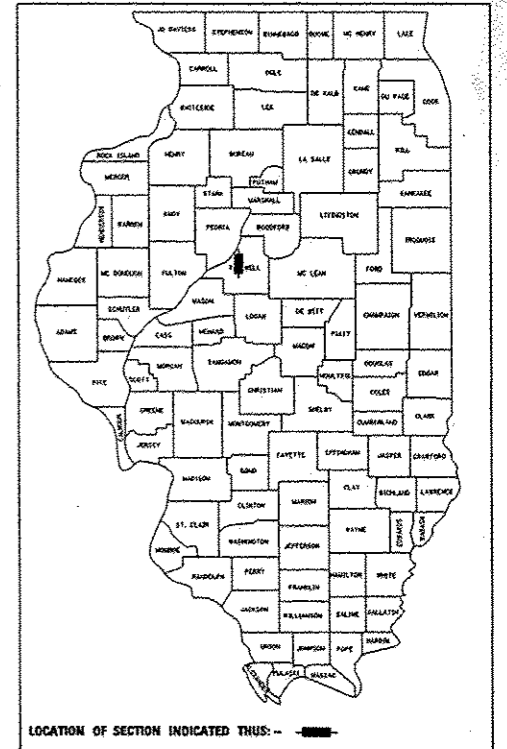
FULL SIZE PLANS HAVE BEEN PREPARED USING STANDARD  
ENGINEERING SCALES. REDUCED SIZED PLANS WILL NOT  
CONFORM TO STANDARD SCALES. IN MAKING MEASUREMENTS  
ON REDUCED PLANS, THE ABOVE SCALES MAY BE USED.



LOCATION MAP

(NOT TO SCALE)

LENGTH OF IMPROVEMENT = 1,913 FEET = 0.36 MILE



LOCATION OF SECTION INDICATED THIS: - - - -

APPROVED *Oct. 9th 2013*  
*Frank Lang*  
VILLAGE OF CREVE COEUR, MAYOR

---

PASSED *10-28-2013*  
*Tom Schae*  
DISTRICT FOUR ENGINEER OF  
LOCAL ROADS & STREETS

Releasing For  
Bid Based on  
Limited Review  
*Oct 20 2013*  
DEPUTY DIRECTOR OF HIGHWAYS,  
REGION THREE ENGINEER  
STATE OF ILLINOIS  
DEPARTMENT OF TRANSPORTATION

---

*Alicia Hermann*  
ALICIA M. HERMANN  
10/19/13 DATE 11/30/13 EXPIRES

---

**HERMANN & ASSOCIATES, LLC**  
CONSULTING ENGINEERS  
4803 NORTH GALENA ROAD  
PEORIA HEIGHTS, ILLINOIS 61616  
PHONE: (309) 687-5566  
FAX: (309) 687-0571  
ILLINOIS PROFESSIONAL DESIGN FIRM NO. 184.004714

---

TRANSPORTATION • MUNICIPAL ENGINEERING • LAND DEVELOPMENT  
ASBESTOS INSPECTION • CONSTRUCTION OBSERVATION



PRINTED BY THE AUTHORITY  
OF THE STATE OF ILLINOIS

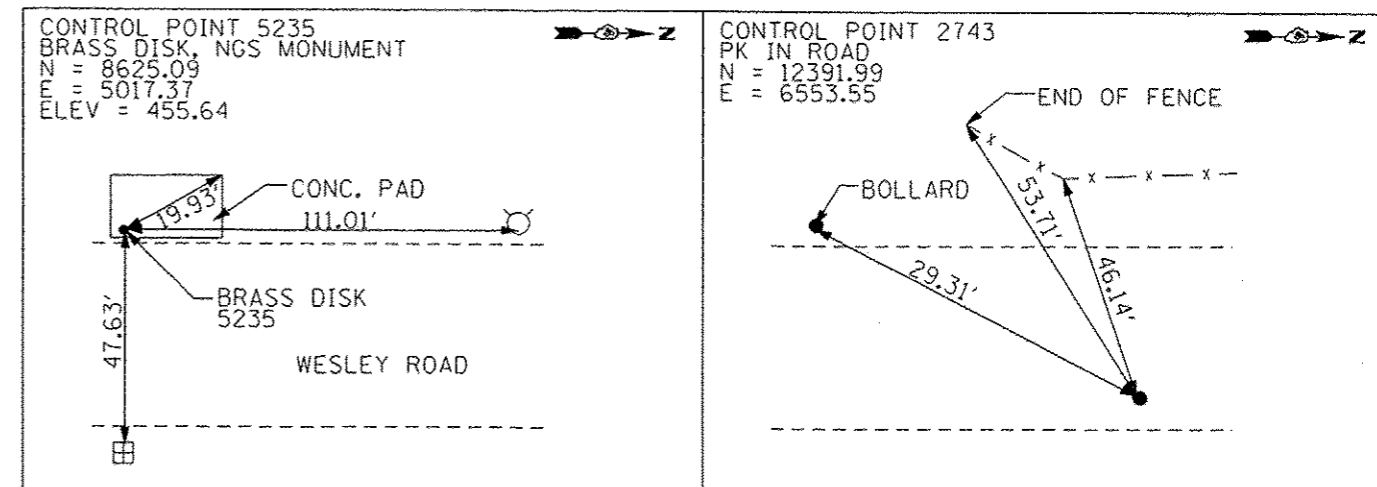
CAT #: 034873-00

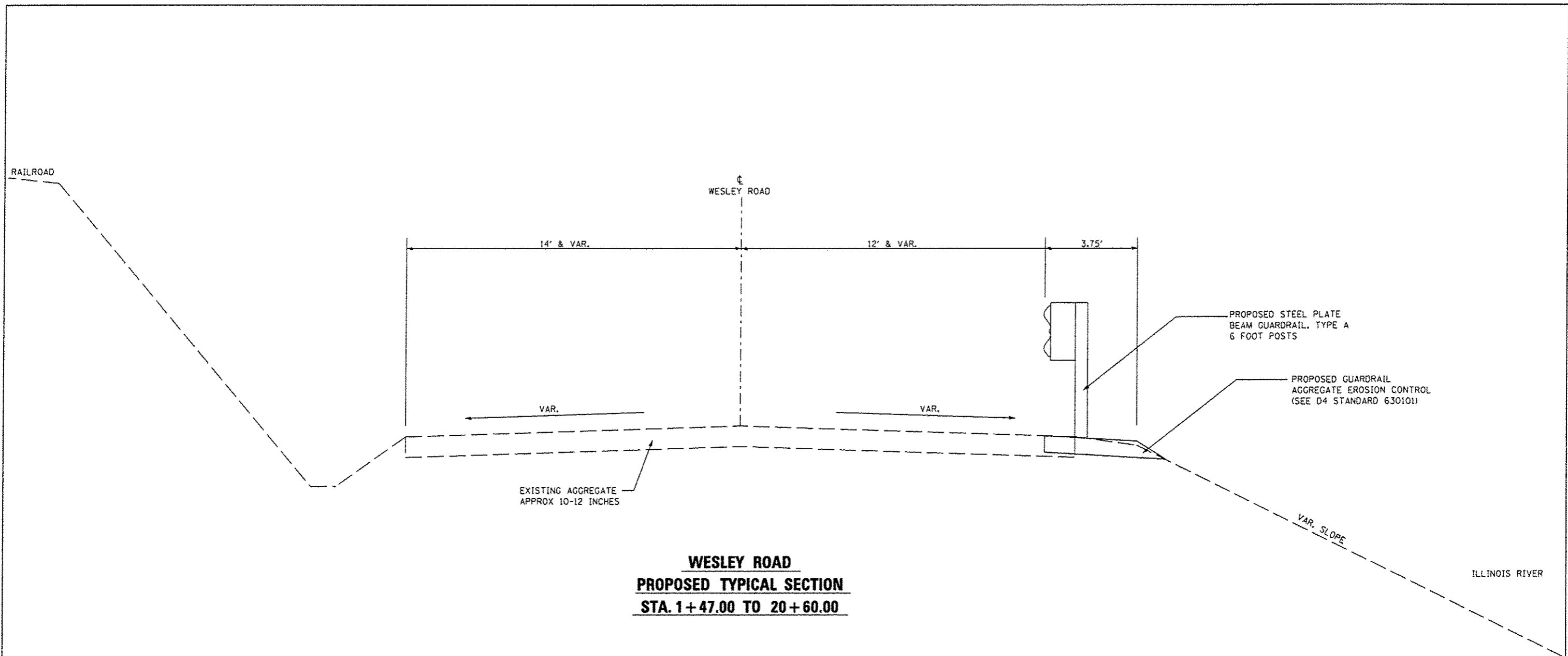
**GENERAL NOTES**

- ALL CONSTRUCTION SHALL COMPLY WITH THE CURRENT EDITIONS OF THE ILLINOIS DEPARTMENT OF TRANSPORTATION'S "STANDARD SPECIFICATIONS FOR ROAD AND BRIDGE CONSTRUCTION," - HEREINAFTER REFERRED TO AS THE "STANDARD SPECIFICATIONS," "SUPPLEMENTAL SPECIFICATIONS AND RECURRING SPECIAL PROVISIONS," AND THE "MANUAL ON UNIFORM TRAFFIC CONTROL DEVICES."
- WESLEY ROAD WILL BE ALLOWED TO BE CLOSED TO TRAFFIC DURING DAY TIME HOURS WHEN CONSTRUCTION ACTIVITIES ARE TAKING PLACE. WESLEY ROAD MUST BE REOPENED AT THE END OF THE DAY. CONTRACTOR SHALL NOTIFY EMERGENCY SERVICES WHEN THE ROADWAY WILL BE CLOSED TO TRAFFIC.
- THE GUARDRAIL ALIGNMENT SHOWN ON THE PLANS MAY BE ADJUSTED IN THE FIELD DURING CONSTRUCTION AT THE DIRECTION OF THE ENGINEER
- THE CONTRACTOR SHALL BE RESPONSIBLE FOR PROTECTING UTILITY PROPERTY FROM CONSTRUCTION OPERATIONS AS OUTLINED IN ARTICLE 107.34 OF THE "STANDARD SPECIFICATIONS," CALL J.U.L.I.E. AT 1-800-892-0123 A MINIMUM OF 48 HOURS IN ADVANCE OF DIGGING OPERATIONS. THE CONTRACTOR SHALL COORDINATE ANY REQUIRED UTILITY ADJUSTMENTS WITH THE APPROPRIATE UTILITY COMPANY.
- THE LOCATION OF EXISTING UNDERGROUND UTILITIES, AS SHOWN ON THE PLANS, ARE BASED ON CAREFUL FIELD INVESTIGATION AND THE BEST INFORMATION AVAILABLE, BUT THEY ARE NOT GUARANTEED. IT SHALL BE THE CONTRACTOR'S RESPONSIBILITY TO DETERMINE THEIR EXACT LOCATION FROM THE UTILITY COMPANIES AND BY FIELD INVESTIGATION, AS REQUIRED FOR CONSTRUCTION.
- ABANDONED UNDERGROUND UTILITIES THAT CONFLICT WITH CONSTRUCTION SHALL BE DISPOSED OF OUTSIDE THE LIMITS OF RIGHT OF WAY ACCORDING TO ARTICLE 202.03 OF THE STANDARD SPECIFICATIONS AND AS DIRECTED BY THE ENGINEER. THIS WORK WILL NOT BE PAID FOR SEPARATELY, BUT SHALL BE INCLUDED IN THE COST OF THE CONTRACT.
- THE CONTRACTOR SHALL NOTIFY AND RECEIVE APPROVAL FROM THE ENGINEER PRIOR TO REMOVING OR COVERING UP ANY SURVEY MONUMENTS OR PROPERTY MARKERS.
- THE CONTRACTOR SHALL CONFINE THE CONSTRUCTION WITHIN THE RIGHT OF WAY OR TEMPORARY CONSTRUCTION EASEMENT.
- EROSION CONTROL SHALL BE PROVIDED FOR ANY DISTURBED AREA PER THE "ILLINOIS PROCEDURES AND STANDARDS FOR URBAN SOIL EROSION AND SEDIMENTATION CONTROL" AS PUBLISHED BY THE ILLINOIS NATURAL RESOURCES CONSERVATION SERVICES.
- CONTRACTOR SHALL TAKE REASONABLE PRECAUTIONS SO AS TO PREVENT DAMAGE FROM OCCURRING TO ALL EXISTING BUILDINGS, STRUCTURES, PUBLIC, AND PRIVATE PROPERTY AS A RESULT OF CONSTRUCTION.
- SIGNS, MAILBOXES, FENCE, FENCE RAILS, POSTS, LANDSCAPING ITEMS NOT IDENTIFIED ON THE BID SCHEDULE WHICH ARE DAMAGED OR DISTURBED DURING CONSTRUCTION SHALL BE REPLACED WITH LIKE MATERIALS AND CONSTRUCTION. THIS WORK SHALL BE INCLUDED IN THE CONTRACT AMOUNT.
- CONTRACTOR SHALL BE RESPONSIBLE FOR PROVIDING AND MAINTAINING APPROPRIATE TRAFFIC CONTROL DEVICES IN ACCORDANCE WITH THE LATEST REQUIREMENTS OF THE STANDARD SPECIFICATIONS, MUTCD, AND ANY REQUIREMENTS DETAILED IN THE CONTRACT DOCUMENTS. TRAFFIC CONTROL SHALL BE PAID FOR AS TRAFFIC CONTROL AND PROTECTION, STANDARD BLR 21.
- ALL ELEVATIONS SHOWN ON THE PLANS ARE ON A LOCALLY ESTABLISHED DATUM. SEE THIS SHEET FOR LIST OF BENCHMARKS AND HORIZONTAL CONTROL POINTS. THE CONTRACTOR SHALL VERIFY ALL BENCHMARKS AND HORIZONTAL CONTROL POINTS FOR ACCURACY PRIOR TO STARTING CONSTRUCTION AND REPORT ANY DISCREPANCIES TO THE ENGINEER.
- THE CONTRACTOR SHALL COMPLY WITH THE LEGAL STREET LOADING LIMITS ESTABLISHED BY THE CITY. THE CONTRACTOR SHALL BE RESPONSIBLE FOR ANY DAMAGE CAUSED BY LUGS OR CLEATS ON TREADS OR WHEELS, EXCESSIVE WEIGHTS, AND LOADS, ETC.

| SUMMARY OF QUANTITIES |  |       |                |
|-----------------------|--|-------|----------------|
| CODE NUMBER           | PAY ITEM   | UNIT  | TOTAL QUANTITY |
| 63000001              | STEEL PLATE BEAM GUARDRAIL, TYPE A, 6 FOOT POSTS   | FOOT  | 1775.0         |
| 63100167              | TRAFFIC BARRIER TERMINAL, TYPE 1 (SPECIAL) TANGENT | EACH  | 2.0            |
| 67100100              | MOBILIZATION                                       | L SUM | 1.0            |
| 70101830              | TRAFFIC CONTROL AND PROTECTION, STANDARD BLR 21    | L SUM | 1.0            |
| 78200410              | GUARDRAIL MARKERS, TYPE A                          | EACH  | 18.0           |
| 78201000              | TERMINAL MARKER - DIRECT APPLIED                   | EACH  | 2.0            |
| Z0001002              | GUARDRAIL AGGREGATE EROSION CONTROL                | TON   | 457.5          |
| Z0013798              | CONSTRUCTION LAYOUT                                | L SUM | 1.0            |

| PLAN LEGEND                 |                   |
|-----------------------------|-------------------|
| CONSTRUCTION LIMITS         | -----             |
| EXISTING R.O.W.             | —————             |
| TEMPORARY EASEMENT          | TT TT TT TT TT TT |
| PROPERTY LINE               | —————             |
| EXISTING FENCE              | - x - x - x -     |
| EXISTING SANITARY SEWER     | - ) - ) -         |
| EXISTING CULVERT            | —————             |
| PROPOSED GUARDRAIL          | —————             |
| EXISTING SIGN               | ⊥                 |
| EXISTING FIRE HYDRANT       | ⊙                 |
| EXISTING UTILITY POLE       | ⊠                 |
| EXISTING BBOX               | ○                 |
| EXISTING TREE               | ⊙                 |
| EXISTING SHRUB              | ⊙                 |
| EXISTING MANHOLE            | ⊙                 |
| EXISTING TELEPHONE PEDESTAL | ⊠                 |
| EXISTING STORM INLET        | ⊠                 |





**WESLEY ROAD  
PROPOSED TYPICAL SECTION  
STA. 1+47.00 TO 20+60.00**

|             |                      |                       |                 |
|-------------|----------------------|-----------------------|-----------------|
| FILE NAME * | USER NAME * #USER*   | DESIGNED - AMH        | REVISED - _____ |
| #FILE.#     |                      | DRAWN - AMH           | REVISED - _____ |
|             | PLOT SCALE * #SCALE* | CHECKED - JLH         | REVISED - _____ |
|             | PLOT DATE * #DATE*   | DATE - SEPTEMBER 2013 | REVISED - _____ |

**STATE OF ILLINOIS  
DEPARTMENT OF TRANSPORTATION**

|  |  |
|--|--|
| <b>WESLEY ROAD<br/>TYPICAL SECTION</b> |  |
| SCALE:                                 | SHEET NO. ___ OF ___ SHEETS STA. _____ TO STA. _____ |

|                              |                |                                  |              |           |
|------------------------------|----------------|----------------------------------|--------------|-----------|
| F.A. RTE.                    | SECTION        | COUNTY                           | TOTAL SHEETS | SHEET NO. |
|                              | 12-00043-00-GR | TAZEWELL                         | 8            | 3         |
| WESLEY ROAD GUARDRAIL        |                | CONTRACT NO. 89630               |              |           |
| FED ROAD DIST NO. 4 ILLINOIS |                | FED. AID PROJECT HSIP-5093 (168) |              |           |

| STEEL PLATE BEAM GUARDRAIL, TYPE A,<br>6 FOOT POSTS |                | 63000001 |
|---|----------------|----------|
| LOCATION  | LENGTH         |          |
| STATION TO STATION                                  | FEET           |          |
| STA. 2+17.25 TO STA. 3+67.14                        | 150.00         |          |
| STA. 3+67.14 TO STA. 7+66.52                        | 400.00         |          |
| STA. 7+66.52 TO STA. 9+16.23                        | 150.00         |          |
| STA. 9+16.23 TO STA. 12+28.80                       | 312.50         |          |
| STA. 12+28.80 TO STA. 14+78.94                      | 250.00         |          |
| STA. 14+78.94 TO STA. 16+41.22                      | 162.50         |          |
| STA. 16+41.22 TO STA. 18+53.47                      | 212.50         |          |
| STA. 18+53.47 TO STA. 19+28.60                      | 75.00          |          |
| STA. 19+28.60 TO STA. 19+91.10                      | 62.50          |          |
| <b>TOTAL</b>  | <b>1775.00</b> |          |

| TRAFFIC BARRIER TERMINAL, TYPE 1<br>(SPECIAL) TANGENT |             | 63100167 |
|---|-------------|----------|
| LOCATION  | UNIT        |          |
| STATION TO STATION                                    | EACH        |          |
| STA. 1+67.13 TO STA. 2+17.25                          | 1.00        |          |
| STA. 19+91.10 TO STA. 20+41.09                        | 1.00        |          |
| <b>TOTAL</b>  | <b>2.00</b> |          |

| MOBILIZATION |             | 67100100 |
|--------------|-------------|----------|
| LOCATION     | UNIT        |          |
| STATION      | L SUM       |          |
| ENTIRE JOB   | 1.00        |          |
| <b>TOTAL</b> | <b>1.00</b> |          |

| TRAFFIC CONTROL & PROTECTION,<br>STANDARD BLR 21 |             | 70101830 |
|--|-------------|----------|
| LOCATION   | UNIT        |          |
| STATION  | L SUM       |          |
| ENTIRE JOB                                       | 1.00        |          |
| <b>TOTAL</b>                                     | <b>1.00</b> |          |

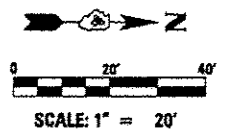
| GUARDRAIL MARKERS, TYPE A      |        |         |              | 78200410 |
|--------------------------------|--------|---------|--------------|----------|
| LOCATION                       | LENGTH | SPACING | UNIT         |          |
| STATION TO STATION             | FEET   | FEET    | EACH         |          |
| STA. 1+67.13 TO STA. 5+67.13   | 400    | 80      | 6.00         |          |
| STA. 5+67.13 TO STA. 16+41.09  | 1073   | 200     | 6.00         |          |
| STA. 16+41.09 TO STA. 20+41.09 | 400    | 80      | 6.00         |          |
| <b>TOTAL</b>                   |        |         | <b>18.00</b> |          |

| GUARDRAIL AGGREGATE EROSION CONTROL |        |               | Z0001002 |
|-------------------------------------|--------|---------------|----------|
| LOCATION                            | LENGTH | WEIGHT        |          |
| STATION TO STATION                  | FEET   | TON           |          |
| STA. 1+47.00 TO STA. 20+60.00       | 1913   | 457.53        |          |
| <b>TOTAL</b>                        |        | <b>457.53</b> |          |

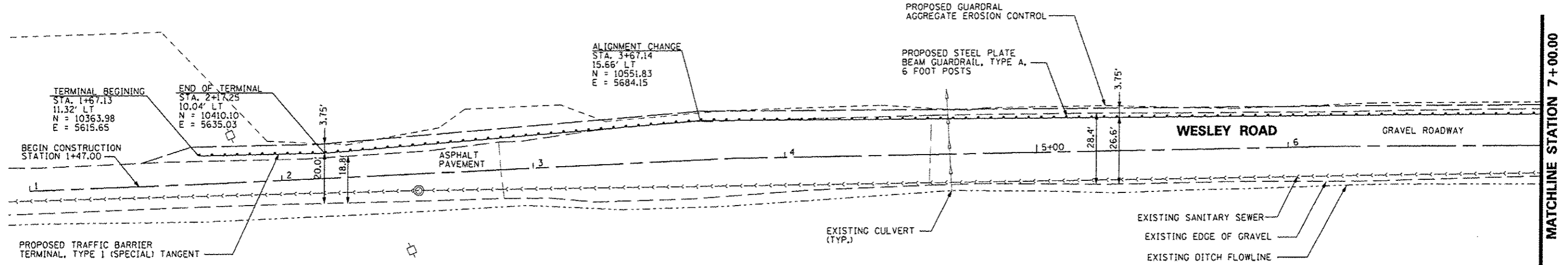
| TERMINAL MARKER - DIRECT APPLIED |             | 78201000 |
|----------------------------------|-------------|----------|
| LOCATION                         | UNIT        |          |
| STATION                          | EACH        |          |
| STATION 1+67.13                  | 1.00        |          |
| STATION 20+41.09                 | 1.00        |          |
| <b>TOTAL</b>                     | <b>2.00</b> |          |

| CONSTRUCTION LAYOUT |             | Z0013798 |
|---------------------|-------------|----------|
| LOCATION            | UNIT        |          |
| STATION             | L SUM       |          |
| ENTIRE JOB          | 1.00        |          |
| <b>TOTAL</b>        | <b>1.00</b> |          |

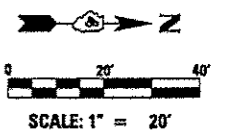
GUARDRAIL ALIGNMENT TO BE ADJUSTED DURING CONSTRUCTION AS NEEDED AND AS DIRECTED BY THE ENGINEER



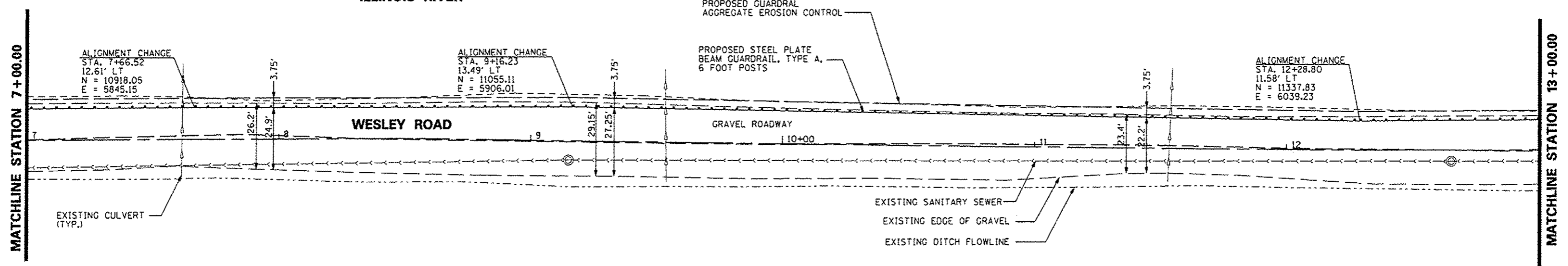
ILLINOIS RIVER



GUARDRAIL ALIGNMENT TO BE ADJUSTED DURING CONSTRUCTION AS NEEDED AND AS DIRECTED BY THE ENGINEER

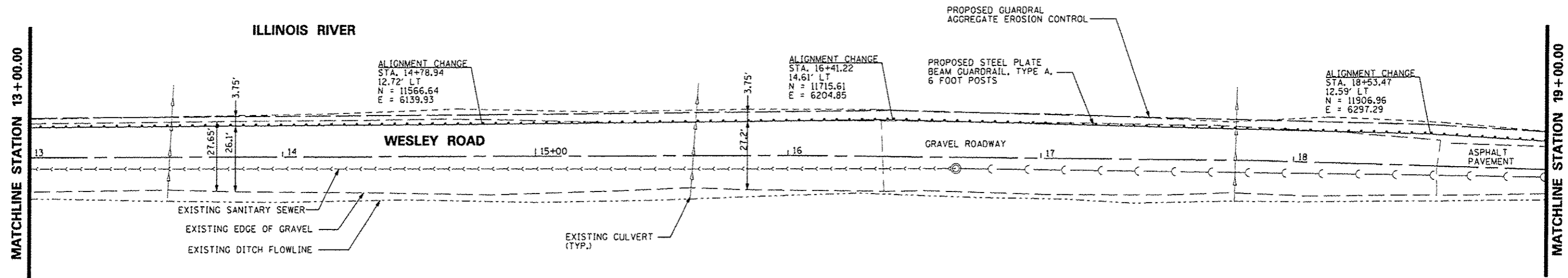
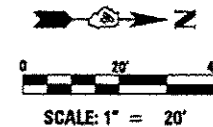


ILLINOIS RIVER

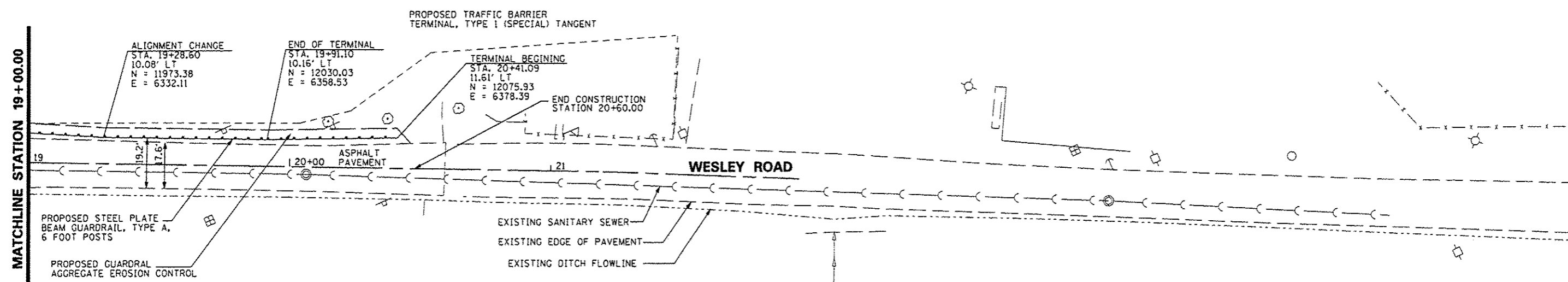
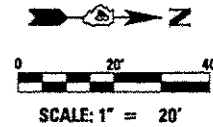


|                     |                    |                       |           |   |  |                         |                               |                |          |        |              |           |
|---------------------|--------------------|-----------------------|-----------|---|--|-------------------------|-------------------------------|----------------|----------|--------|--------------|-----------|
| FILE NAME *         | USER NAME * #USER* | DESIGNED - AMH        | REVISED - | <b>STATE OF ILLINOIS<br/>DEPARTMENT OF TRANSPORTATION</b> | <b>PROPOSED PLAN SHEET</b>                                       |                         |                               | F.A. RTE.      | SECTION  | COUNTY | TOTAL SHEETS | SHEET NO. |
| #FILE#              |                    | DRAWN - AMH           | REVISED - |   | SCALE:   | SHEET NO. 5 OF 8 SHEETS | STA. 1+00.00 TO STA. 13+00.00 | 12-00043-00-GR | TAZEWELL | 8      | 8            |           |
| PLG SCALE * #SCALE* |                    | CHECKED - JLH         | REVISED - |   | WESLEY ROAD GUARDRAIL CONTRACT NO. B9630                         |                         |                               |                |          |        |              |           |
| PLG DATE * #DATE*   |                    | DATE - SEPTEMBER 2013 | REVISED - |   | WESLEY ROAD DIST NO. 4 ILLINOIS FED. AID PROJECT HSIP-5093 (168) |                         |                               |                |          |        |              |           |

GUARDRAIL ALIGNMENT TO BE ADJUSTED DURING CONSTRUCTION AS NEEDED AND AS DIRECTED BY THE ENGINEER

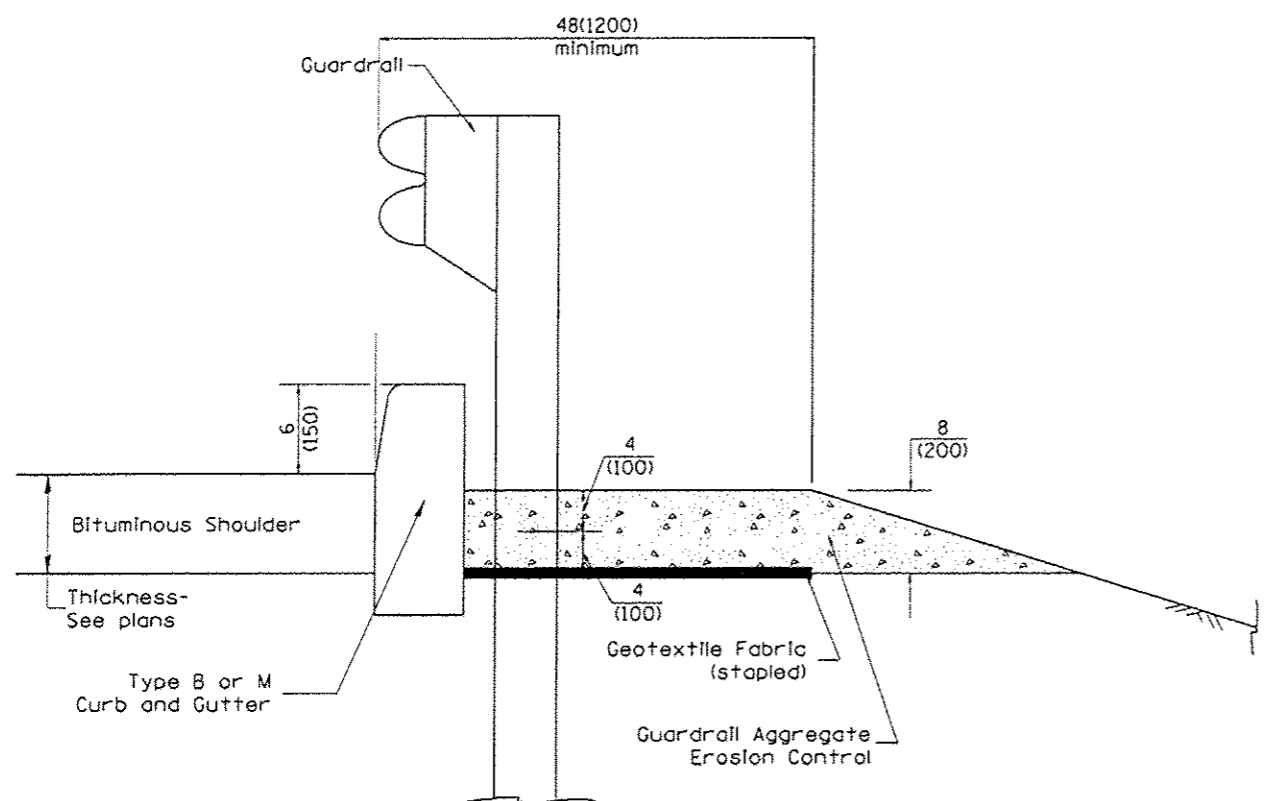


GUARDRAIL ALIGNMENT TO BE ADJUSTED DURING CONSTRUCTION AS NEEDED AND AS DIRECTED BY THE ENGINEER

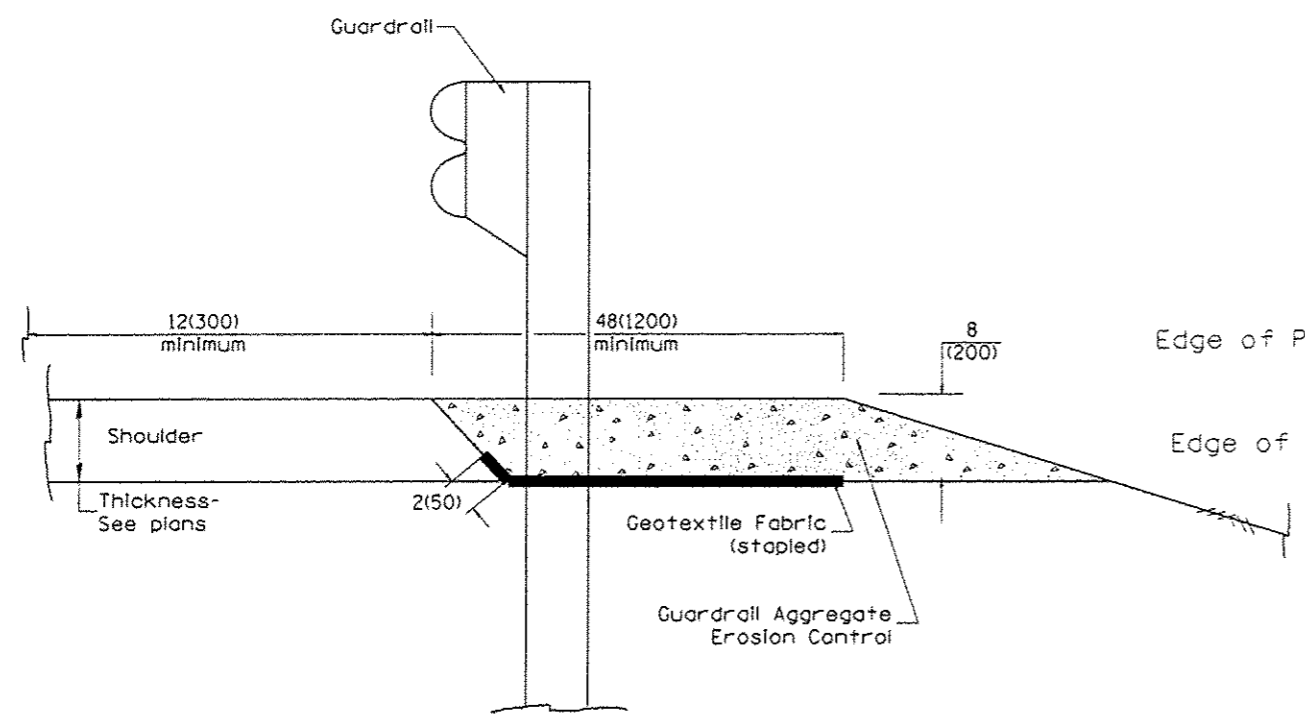


|                        |                   |                       |           |   |                            |                                |          |                                 |              |           |
|------------------------|-------------------|-----------------------|-----------|---|----------------------------|--------------------------------|----------|---------------------------------|--------------|-----------|
| FILE NAME *<br>#FILEL* | USER NAME *#USER* | DESIGNED - AMH        | REVISED - | <b>STATE OF ILLINOIS<br/>DEPARTMENT OF TRANSPORTATION</b> | <b>PROPOSED PLAN SHEET</b> | F.A. RTE.                      | SECTION  | COUNTY                          | TOTAL SHEETS | SHEET NO. |
|                        |                   | DRAWN - AMH           | REVISED - |   |                            | 12-00043-00-GR                 | TAZEWELL | 8                               | 8            |           |
|                        |                   | CHECKED - JLH         | REVISED - |   |                            | WESLEY ROAD GUARDRAIL          |          | CONTRACT NO. 89630              |              |           |
|                        |                   | DATE - SEPTEMBER 2013 | REVISED - |   |                            | FED ROAD DIST NO. 4 ILLINOIS   |          | FED. AID PROJECT HSP-5093 (168) |              |           |
| PLOT SCALE = #SCALE*   |                   |                       |           | SCALE:  | SHEET NO. 8 OF 8 SHEETS    | STA. 13+00.00 TO STA. 22+00.00 |          |                                 |              |           |

DESIGNER NOTES:  
 1. Consider using a "B" curb pay item at guardrail installations where grades are equal to or greater than 1% and at inlets. (Include District Special Provision)  
 2. Use GUARDRAIL AGGREGATE EROSION CONTROL at guardrail installations where grades are less than 1%. (Include District Special Provision)  
 3. Include State Standards 609001, 609006 or 610001 if applicable.  
 4. Include the following District Cadd Standards as needed: Slope Drains for Exposed Pipes; Slope Drains for Buried Pipes; Seepage Collars for Buried Pipes; Seepage Collars for Exposed Pipes; Concrete Thrust Blocks and Pipe Elbow.  
 5. Include District Special Provision "Aggregate Quality" for projects located in the Western Area of the District - approx. dividing line is IL 97.



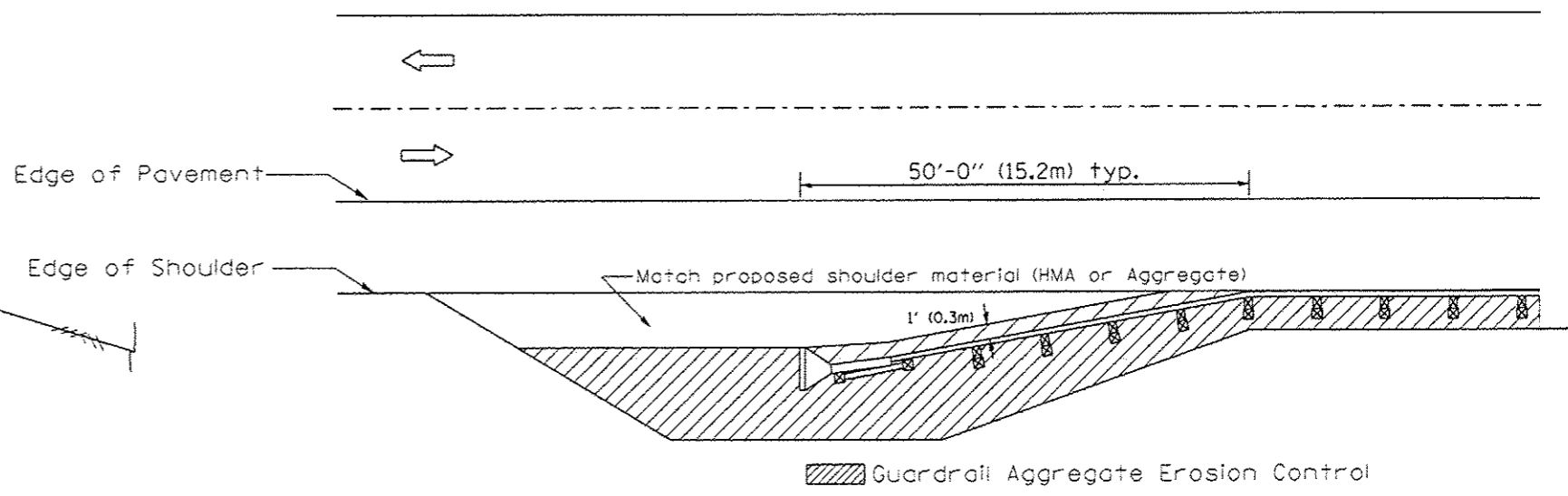
TYPICAL SECTION WITH EROSION CONTROL CURB



TYPICAL SECTION WITHOUT EROSION CONTROL CURB

GENERAL NOTES: GUARDRAIL AGGREGATE EROSION CONTROL

1. This work shall consist of grading as needed, furnishing and installing geotextile fabric and staples, and furnishing, placing and shaping crushed aggregate around and behind Steel Plate Beam Guardrail posts in accordance with Plan Details.
2. Before placing the aggregate and the Geotextile Fabric, weeds and grass shall be removed from the area to be covered.
3. After the area has been prepared, and in a dry condition, the Geotextile fabric shall be placed with a 12(300) minimum overlap. A knife cut for guardrail post installation is necessary.
4. The aggregate shall be deposited, compacted and shaped by either mechanical or hand methods, in a manner reasonably true to line and grade.
5. The Contractor shall have the option of placing the guardrail before or after the Geotextile Fabric and Aggregate are in place. If the guardrail is placed after the Geotextile Fabric and Aggregate, then any voids must be filled and the aggregate returned to line and grade.
6. Materials shall meet the following requirements:
  - A. The crushed aggregate shall be CA1 gradation in accordance with Article 1004.01(c) of the Standard Specifications.
  - B. The Geotextile Fabric shall be nonwoven fabric in accordance with Article 1080.02 of the Standard Specifications.



All dimensions are in inches (millimeters) unless otherwise noted.

|          |                                     |      |         |                                |      |
|----------|-------------------------------------|------|---------|--------------------------------|------|
| 01-01-97 | RENUM. C-22.01, NEW REVISION BOX    | T.P. | 3-7-11  | Added Detail showing plan view | R.D. |
| 03-01-97 | CORRECT STD. NUMBERS IN NOTES PG. 2 | J.A. | 8-10-12 | Revised curb "B" and aggregate | R.D. |
| 11-03-00 | CORRECTION TO NOTES                 | M.A. |         |                                |      |
| 10-16-06 | REVISED TO 2007 SPEC.               | M.A. |         |                                |      |

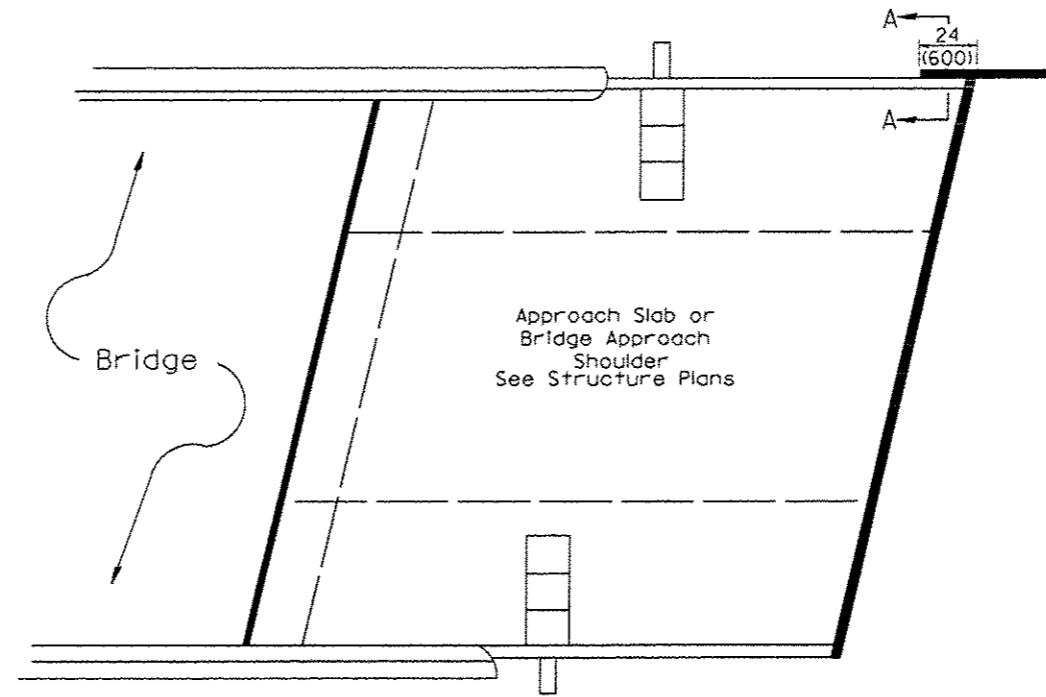
STATE OF ILLINOIS  
 DEPARTMENT OF TRANSPORTATION

GUARDRAIL EROSION CONTROL TREATMENTS

NOT TO SCALE

SHT. 1 OF 2  
 CADD STD. 630101-04

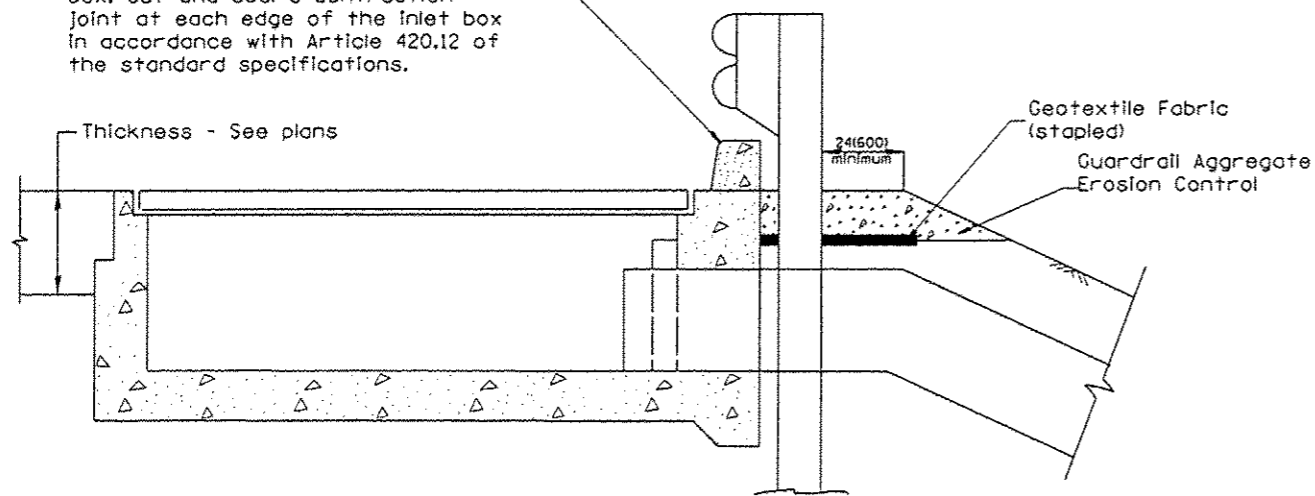
| F.A. RTE.                      | SECTION        | COUNTY   | TOTAL SHEETS                     | SHEET NO. |
|--------------------------------|----------------|----------|----------------------------------|-----------|
|                                | 12-00043-00-CR | TAZEWELL | 8                                | 7         |
| WESLEY ROAD GUARDRAIL          |                |          | CONTRACT NO. 89630               |           |
| FED. ROAD DIST. NO. 4 ILLINOIS |                |          | FED. AID PROJECT HSIP-5093 (168) |           |



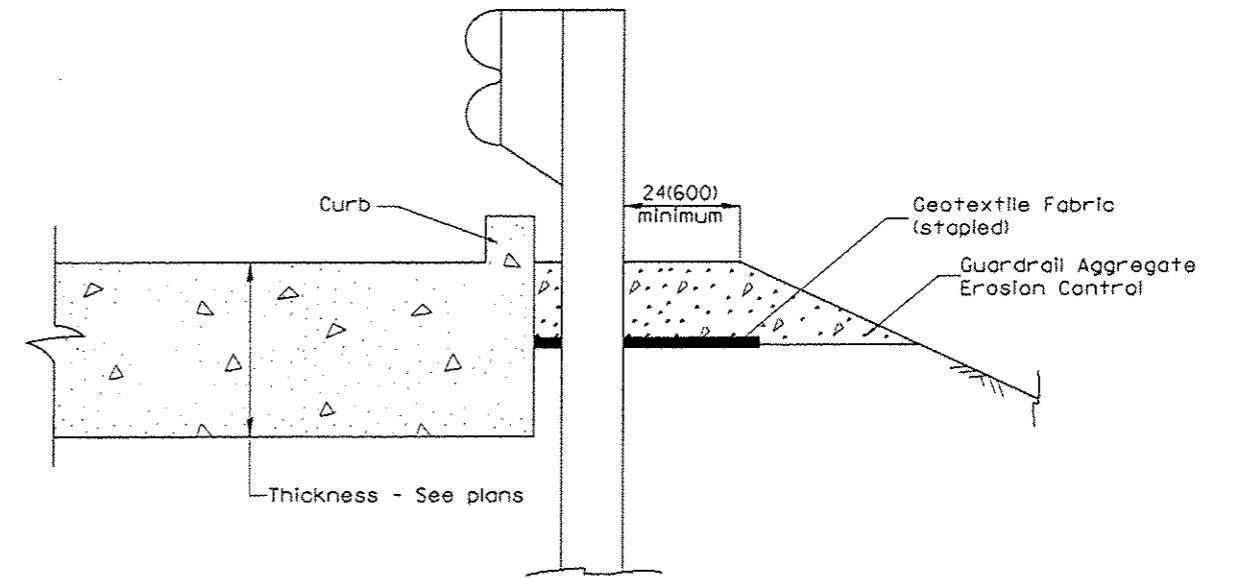
PLAN VIEW

APPROACH SLAB OR BRIDGE APPROACH SHOULDER  
(STANDARD 609001 or 609006)

Type B or M curb.  
Install an 8' long #4 epoxy coated reinforcement bar across the inlet box. Cut and seal a contraction joint at each edge of the inlet box in accordance with Article 420.12 of the standard specifications.



TYPICAL SECTION AT INLETS  
TYPE E & F (STANDARD 610001)



SECTION A-A  
TYPICAL SECTION WITH BRIDGE APPROACH CURB

All dimensions are in inches (millimeters) unless otherwise noted.

|             |                      |          |           |   |                                      |                                |                                  |                      |              |           |
|-------------|----------------------|----------|-----------|---|--------------------------------------|--------------------------------|----------------------------------|----------------------|--------------|-----------|
| FILE NAME   | USER NAME * #USER*   | DESIGNED | REVISIONS | STATE OF ILLINOIS<br>DEPARTMENT OF TRANSPORTATION | GUARDRAIL EROSION CONTROL TREATMENTS | F.A. RTE.                      | SECTION                          | COUNTY               | TOTAL SHEETS | SHEET NO. |
| #FILE#      | PLOT SCALE * #SCALE* | DRAWN    | REVISIONS |   |                                      | 12-00043-00-GR                 | TAZEWELL                         | 8                    | 8            |           |
| #MODELNAME# | PLOT DATE * #DATE*   | CHECKED  | REVISIONS |   |                                      | WESLEY ROAD GUARDRAIL          | CONTRACT NO. 89630               | SHT. 2 OF 2          |              |           |
|             |                      | DATE     | REVISIONS |   |                                      | FED. ROAD DIST. NO. 4 ILLINOIS | FED. AID PROJECT HSIP-5093 (168) | CAADDISTDA.630101-D4 |              |           |