

F.A.U. RTE.	SECTION	COUNTY	TOTAL SHEETS	SHEET NO.
9005	11-00049-01-RR	MADISON	10	1
FEDERAL AID PROJECT		ILLINOIS CONTRACT NO. 97535		
COVER SHEET				

INDEX OF SHEETS

SHEET NO.	ITEM
1	COVER SHEET
2	GENERAL NOTES, SCHEDULES, TYPICAL SECTIONS & SUMMARY OF QUANTITIES
3	EVANS STREET PLAN
4	OLD ST. LOUIS ROAD PLAN
5	SOUTH MAIN STREET PLAN
6	PAVING DETAILS & TYPICAL SECTIONS
7	BARRICADE DETAIL
8	CURB RAMP DETAILS
9	CURB RAMP DETAILS
10	CURB RAMP DETAILS

IDOT STANDARD DRAWINGS

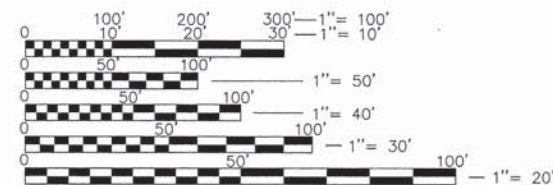
280001-07	630001-10	701901-03
424001-07	635001-01	720001-01
424006-01	664001-02	720006-04
424011-01	701001-02	720011-01
424016-01	701006-05	729001-01
424021-02	701501-06	780001-04
606001-05	701801-05	

UTILITY CONTACT INFORMATION

UTILITY COMPANY	TYPE	TELEPHONE	ADDRESS	ADJUSTMENT
AMEREN IP	ELECTRIC GAS	618-236-4309 618-236-4338	1050 WEST BOULEVARD P.O. BOX 428 BELLEVILLE, IL 62222-0428	NO ANTICIPATED CONFLICTS
AT&T	TELEPHONE/FIBER OPTIC	618-346-6426	203 GOETHE STREET COLLINSVILLE, IL 62234	NO ANTICIPATED CONFLICTS
BP AMOCO	PIPELINE	573-267-3981	25799 HIGHWAY P CENTER, MO 63436	NO ANTICIPATED CONFLICTS
CHARTER COMMUNICATIONS	CABLE TV/FIBER OPTIC	636-207-7044	815 CHARTER COMMONS DR. TOWN & COUNTRY, MO 63107	NO ANTICIPATED CONFLICTS
IDOT	TRAFFIC SIGNAL CABLE	618-346-3100	1102 EASTPORT PLAZA DRIVE COLLINSVILLE, IL 62234	NO ANTICIPATED CONFLICTS
LEVEL 3 COMMUNICATIONS	FIBER OPTIC	720-480-3364	624 WHITE OAK DRIVE CHATHAM, IL 62629	NO ANTICIPATED CONFLICTS
MARATHON	PIPELINE	618-254-1112	700 SOUTH 6TH STREET P.O. BOX 261 WOOD RIVER, IL 62095	NO ANTICIPATED CONFLICTS
MCI	FIBER OPTIC	708-458-6410	P. O. BOX 387 7719 WEST 80 PLACE SUMMIT, IL 60501	NO ANTICIPATED CONFLICTS
MISSISSIPPI RIVER TRANSMISSION	PIPELINE	618-610-3239	11839 BLUFF ROAD COLUMBIA, IL 62234	NO ANTICIPATED CONFLICTS
SPRINT	FIBER OPTIC	847-318-3437	5600 NORTH RIVER ROAD ROSEMONT, IL 60018	NO ANTICIPATED CONFLICTS
360 NETWORKS	FIBER OPTIC	314-830-9928	4024 HOUNDS HILL DRIVE FLORISSANT, MO 63034	NO ANTICIPATED CONFLICTS
CITY OF WOOD RIVER	WATER & SEWER	618-251-3122	501 WEST FERGUSON WOOD RIVER, IL 62095	NO ANTICIPATED CONFLICTS

STATE OF ILLINOIS DEPARTMENT OF TRANSPORTATION DIVISION OF HIGHWAYS PLANS FOR EVANS STREET IMPROVEMENTS

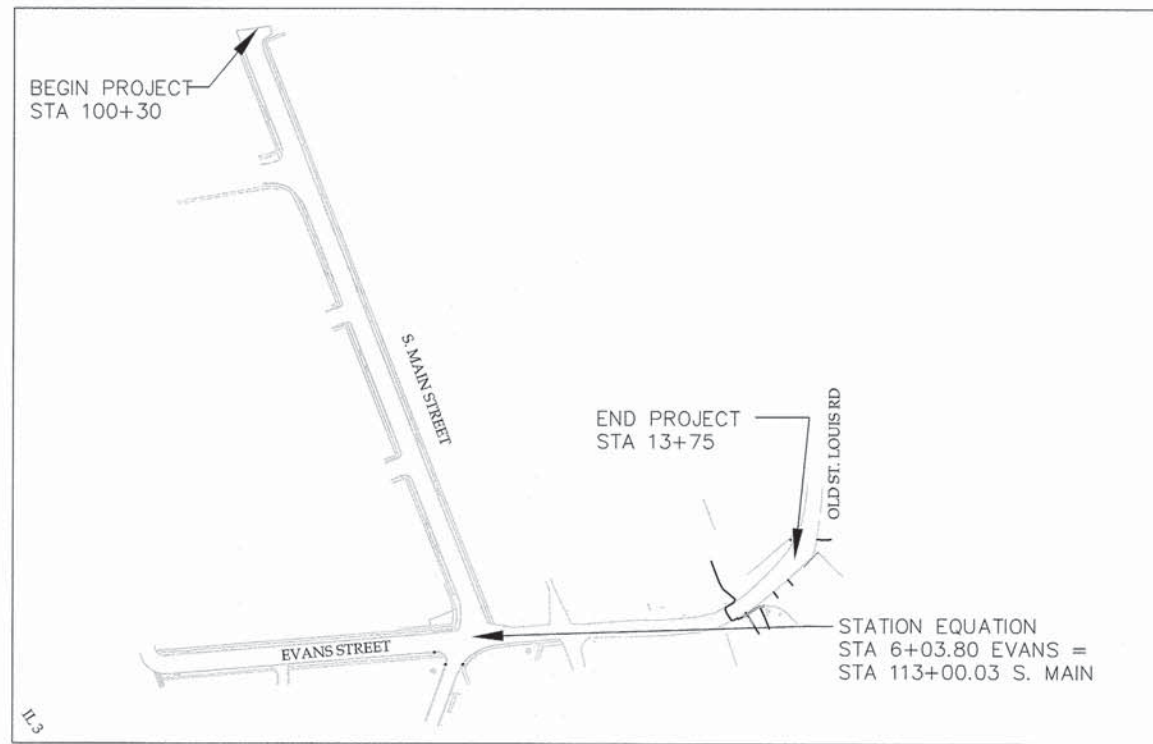
SECTION 11-00049-01-RR
CITY OF WOOD RIVER, ILLINOIS
MADISON COUNTY
PROJECT NO. HSR-5011(406)
C-98-309-14
FAU ROUTE 9005



FULL SIZE PLANS HAVE BEEN PREPARED USING STANDARD ENGINEERING SCALES. REDUCED SIZED PLANS WILL NOT CONFORM TO STANDARD SCALES. IN MAKING MEASUREMENTS ON REDUCED PLANS, THE ABOVE SCALES MAY BE USED.

J.U.L.I.E.
JOINT UTILITY LOCATION INFORMATION FOR
EXCAVATION PHONE: 800-892-0123

PRINTED BY AUTHORITY OF THE STATE OF ILLINOIS



ROADWAY DESIGNATION:
URBAN LOCAL ROAD

LOCATION MAP
N.T.S.

GROSS LENGTH OF PROJECT:
2,054 Ft (0.4 MILES)
NET LENGTH OF PROJECT:
1,983 Ft (0.37 MILES)

ADT:
700



CITY OF WOOD RIVER
PUBLIC SERVICES DEPARTMENT
501 WEST FERGUSON
WOOD RIVER, IL 62095
TEL (618) 251-3122



ST. LOUIS, MO
1750 BRENTWOOD BLVD.
SUITE 700
ST. LOUIS, MO 63144
TEL (314) 961-1888
FAX (314) 961-1814

CHICAGO, IL
20 N. WACKER DR.
SUITE 3019
CHICAGO, IL 60606
TEL (312) 621-8777
FAX (312) 621-8779

OMAHA, NE
220 N. 89th ST.
SUITE 102
OMAHA, NE 68114
TEL (402) 614-4468
FAX (402) 614-4878

SIGNATURE _____

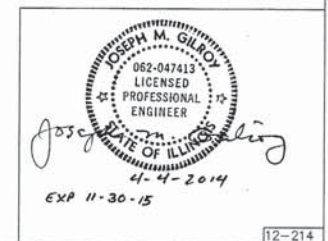
DATE _____

EXPIRATION _____

APPROVED: April 4, 2014
(DATE)
Tul S. W. S.
(MAYOR)

PASSED April 15, 2014
(DATE)
[Signature]
DISTRICT #8 ENGINEER OF LOCAL ROADS & STREETS

RELEASING FOR BID
BASED ON LIMITED
REVIEW [Signature]
DEPUTY DIRECTOR OF HIGHWAYS, REGION #5 ENGINEER



GENERAL NOTES:

- UTILITIES
 - UNDERGROUND UTILITIES HAVE BEEN PLOTTED FROM AVAILABLE INFORMATION AND THEREFORE, THEIR LOCATIONS MUST BE CONSIDERED APPROXIMATE ONLY. CONTRACTOR SHALL VERIFY LOCATIONS AND ELEVATIONS OF EXISTING INLETS, MANHOLES, PIPES AND OTHER UNDERGROUND UTILITIES, WHETHER SHOWN OR NOT SHOWN ON THESE PLANS, PRIOR TO CONSTRUCTION. CONTRACTOR SHALL CONTACT RAILROAD COMPANIES FOR POSSIBLE UNDERGROUND CABLES IN THE VICINITY OF THE WORK, E.G. CROSSING GATE CIRCUITRY, THAT WOULD NOT ORDINARILY BE LOCATED BY J.U.L.I.E.
 - EXISTING ABOVE & BELOW GROUND UTILITIES SHALL BE PROTECTED AND USED IN PLACE, UNLESS OTHERWISE INDICATED.
 - EXISTING UTILITIES AND/OR STRUCTURES AFFECTED BY CONSTRUCTION, EITHER SHOWN OR NOT SHOWN ON THE PLANS, SHALL BE ADJUSTED TO GRADE AS REQUIRED, BY THE UTILITY OWNER. CONTRACTOR TO COORDINATE ANY REQUIRED ADJUSTMENTS.
- STORMWATER SHALL BE DISCHARGED AT AN ADEQUATE NATURAL DISCHARGE POINT. SINKHOLES ARE NOT ADEQUATE NATURAL DISCHARGE POINTS.
- PROPOSED ELEVATIONS ARE SHOWN TO FINISHED TOPSOIL AND FINISHED PAVEMENT GRADES.
- THE PLANS INCLUDE BOTH FIELD LOCATED AND REFERENCED BASE MAP DATA. ALL LOCATIONS ARE TO BE CONSIDERED APPROXIMATE AND SHALL BE VERIFIED IN THE FIELD BY THE CONTRACTOR.
 - MAXIMUM ALLOWABLE CROSS SLOPE IS 1.8%.
 - CONSTRUCT REPLACEMENT SIDEWALKS IN SAME LOCATION AS EXISTING SIDEWALKS. MATCH WIDTH OF EXISTING SIDEWALK, EXCEPT THAT THE MINIMUM WIDTH OF NEW SIDEWALK (OTHER THAN COURTESY WALKS) SHALL BE 4 FEET.
 - CONSTRUCT COURTESY WALKS TO THE SAME SPECIFICATIONS AS CONCRETE SIDEWALK.
- INSTALL SIGNAGE AND MARKINGS IN ACCORDANCE WITH THE FHWA MANUAL ON UNIFORM TRAFFIC CONTROL DEVICES (MUTCD), CURRENT IDOT STANDARDS, AND IDOT STANDARD SPECIFICATIONS FOR ROAD AND BRIDGE CONSTRUCTION. APPLICATION RATES FOR BITUMINOUS MATERIALS (PRIME COAT) SHALL BE 0.375 GAL/SQ YD ON AGGREGATE SURFACES AND 0.075 GAL/SQ YD ON MILLED OR EXISTING BITUMINOUS SURFACES. WHEN DIRECTED BY THE ENGINEER, A BITUMINOUS PRIME COAT SHALL BE APPLIED AT THE RATE OF 0.020 GAL/SQ YD TO THE 2-1/2" HMA BINDER COURSE BEFORE PLACING THE 1-1/4" HMA SURFACE COURSE.
- SEEDING IS REQUIRED FOR RESTORATION OF ALL DISTURBED AREAS, AS SPECIFIED.
- SAWCUTS WILL NOT BE MEASURED SEPARATELY FOR PAYMENT.

SUMMARY OF QUANTITIES

ITEM	DESCRIPTION	UNIT	QUANTITY
40200500	AGGREGATE SURFACE COURSE, TYPE A G"	SQ YD	705
35101000	AGGREGATE BASE COURSE, TYPE A 11"	SQ YD	940
X4020400	AGGREGATE SURFACE COURSE, TYPE B 4"	SQ YD	29
X4020500	AGGREGATE SURFACE COURSE, TYPE B 6"	SQ YD	21
40600100	BITUMINOUS MATERIALS (PRIME COAT)	GAL	430
40603080	HOT-MIX ASPHALT BINDER COURSE, IL 19.0, N50	TON	130
40603315	HOT-MIX ASPHALT SURFACE COURSE, MIX "C", N70	TON	105
42300200	PORTLAND CEMENT CONCRETE DRIVEWAY PAVEMENT, 6 INCH	SQ YD	110
42400100	PORTLAND CEMENT CONCRETE SIDEWALK, 4 INCH	SQ FT	11,908
42400800	DETECTABLE WARNINGS	SQ FT	142
44000100	PAVEMENT REMOVAL	SQ YD	1,096
44000154	HOT-MIX ASPHALT SURFACE REMOVAL, 1 1/2"	SQ YD	560
44000200	DRIVEWAY PAVEMENT REMOVAL	SQ YD	110
44000500	COMBINATION CURB AND GUTTER REMOVAL	FOOT	275
44000600	SIDEWALK REMOVAL	SQ FT	11,908
60600605	CONCRETE CURB TYPE B	FOOT	93
60603800	COMBINATION CONCRETE CURB & GUTTER, TYPE B-6.12	FOOT	420
63500105	DELINEATORS	EACH	2
66400305	CHAIN LINK FENCE 6"	FOOT	337
67100100	MOBILIZATION	L SUM	1
72000100	SIGN PANEL, TYPE 1	SQ FT	58
72400500	RELOCATE SIGN PANEL ASSEMBLY - TYPE A	EACH	4
72900100	METAL POST - TYPE A	FOOT	220
78001130	PAINT PAVEMENT MARKING - LINE 6"	FOOT	579
X2500900	SEEDING, CLASS 1 (SPECIAL)	ACRE	0.1
X8062400	CONCRETE GUTTER (SPECIAL)	FOOT	38
X7010216	TRAFFIC CONTROL & PROTECTION (SPECIAL)	L SUM	1
Z0038600	PERMANENT BARRICADES	FOOT	70
Z0048665	RAILROAD PROTECTIVE LIABILITY INSURANCE	L SUM	1
Z0013798	CONSTRUCTION LAYOUT	L SUM	1

Δ SPECIALTY ITEMS

COMMITMENTS

NO COMMITMENTS.

CONTROL POINTS

CP #	ROADWAY	NORTHING	EASTING	ELEVATION	DESCRIPTION
#100	IL RTE 143 & OLD ST. LOUIS RD	98719.421	15494.054	429.495	PK NAIL IN JOINT, SW SIDE OF SIDEWALK, NE CORNER OF INTERSECTION
#200	IL RTE 143 AT IL RTE 143	98114.496	13188.106	426.668	PK NAIL IN BITUMINOUS SHOULDER, NE CORNER OF INTERSECTION

EVANS STREET - OLD ST. LOUIS ROAD ALIGNMENT DATA

SEGMENT #	Radius	Length	Line/Chord Direction	START STATION	END STATION	START NORTHING & EASTING	END NORTHING & EASTING
L1		859.72'	N85° 20' 30.10"E	POB STA 0+00.00	PC STA 8+59.72	N: 797,132.19 E: 2,314,138.97	N: 797,202.01 E: 2,314,995.85
C1	1000.00'	65.51'	N87° 13' 05.83"E	PC STA 8+59.72	PT STA 9+25.22	N: 797,202.01 E: 2,315,061.26	N: 797,205.19 E: 2,315,081.26
L2		92.63'	N89° 05' 41.56"E	PT STA 9+25.22	PC STA 10+17.85	N: 797,205.19 E: 2,315,061.26	N: 797,206.65 E: 2,315,153.88
C2	250.00'	99.39'	N77° 42' 18.76"E	PC STA 10+17.85	PCC STA 11+17.24	N: 797,206.65 E: 2,315,153.88	N: 797,227.68 E: 2,315,250.35
C3	385.00'	245.24'	N47° 04' 03.38"E	PCC STA 11+17.24	PCC STA 13+62.48	N: 797,227.68 E: 2,315,250.35	N: 797,391.60 E: 2,315,426.55
C4	78.15'	28.73'	N17° 17' 17.93"E	PCC STA 13+62.48	END STA 13+91.21	N: 797,391.60 E: 2,315,426.55	N: 797,418.87 E: 2,315,435.04

MAIN STREET ALIGNMENT DATA

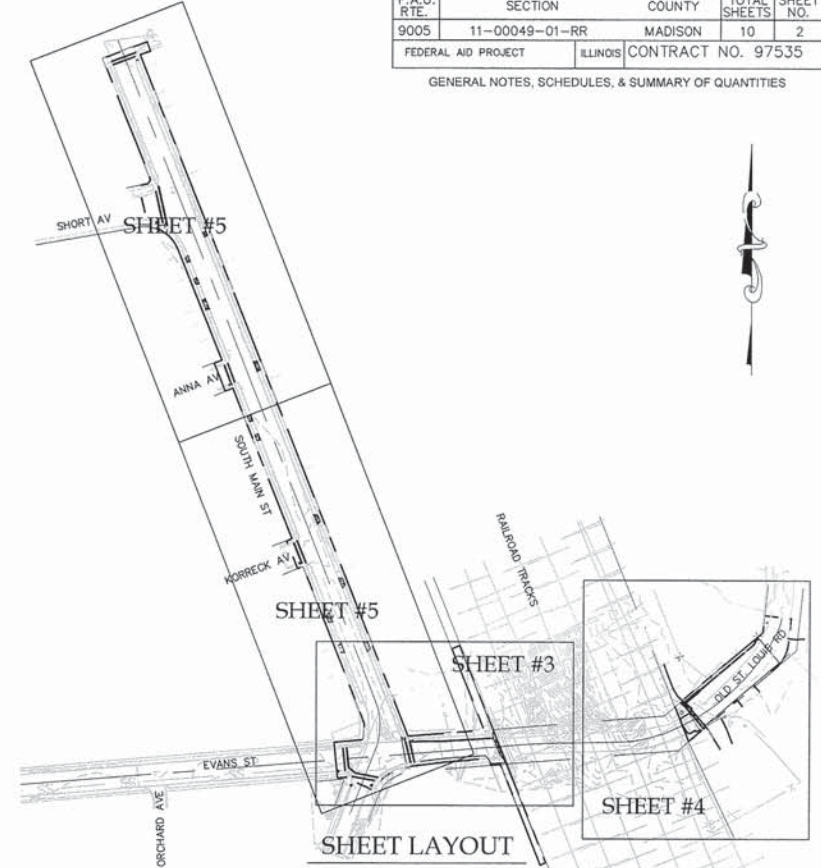
SEGMENT #	Radius	Length	Line/Chord Direction	START STATION	END STATION	START NORTHING & EASTING	END NORTHING & EASTING
L3		1204.43'	S21° 25' 20.39"E	POB STA 100+00.00	PC STA 112+04.43	N: 796,395.22 E: 2,314,305.76	N: 797,274.00 E: 2,314,745.66
C5	110.00'	82.39'	S0° 02' 04.19"W	PC STA 112+04.43	PT STA 112+86.82	N: 797,274.00 E: 2,314,745.66	N: 797,193.53 E: 2,314,745.62
L4		113.18'	S21° 29' 28.78"W	PT STA 112+86.82	END STA 114+00.00	N: 797,193.53 E: 2,314,745.62	N: 797,088.21 E: 2,314,704.15

CONCRETE PAVING SCHEDULE

STA	SIDE	ITEM	PAY QUANTITY				
			DRIVEWAY PAVEMENT REMOVAL (SQ YD)	SIDEWALK REMOVAL (SQ FT)	PCC DRIVEWAY PAVEMENT (SQ YD)	PCC CONCRETE SIDEWALK (SQ FT)	DETECTABLE WARNINGS (SQ FT)
100+34	LT	SIDEWALK	--	47	--	47	--
100+34	LT	CURB RAMP	--	42	--	42	12
100+34	RT	CURB RAMP	--	99	--	99	10
100+39	LT	SIDEWALK	--	26	--	26	--
101+47	LT	COURTESY WALK	--	18	--	18	--
102+50	RT	COURTESY WALK	--	18	--	18	--
102+60	RT	CURB RAMP	--	35	--	35	17
103+22	RT	CURB RAMP	--	73	--	73	17
103+37	LT	COURTESY WALK	--	18	--	18	--
103+56	LT	DRIVEWAY APRON	5	--	5	--	--
103+65	RT	COURTESY WALK	--	18	--	18	--
103+85	RT	DRIVEWAY APRON	6	--	6	--	--
104+14	LT	COURTESY WALK	--	18	--	18	--
104+25	RT	DRIVEWAY APRON	7	--	7	--	--
104+67	RT	DRIVEWAY APRON	11	--	11	--	--
105+00	RT	COURTESY WALK	--	18	--	18	--
105+32	RT	COURTESY WALK	--	18	--	18	--
105+52	LT	COURTESY WALK	--	18	--	18	--
105+80	RT	CURB RAMP	--	145	--	145	10
105+97	LT	DRIVEWAY APRON	11	--	11	--	--
106+12	RT	CURB RAMP	--	27	--	27	9
106+26	LT	COURTESY WALK	--	18	--	18	--
106+58	RT	COURTESY WALK	--	18	--	18	--
106+75	RT	DRIVEWAY APRON	8	--	8	--	--
107+15	RT	DRIVEWAY APRON	8	--	8	--	--
107+95	LT	COURTESY WALK	--	18	--	18	--
108+78	LT	DRIVEWAY APRON	10	--	10	--	--
109+73	LT	COURTESY WALK	--	18	--	18	--
109+94	LT	DRIVEWAY APRON	11	--	11	--	--
110+27	RT	COURTESY WALK	--	18	--	18	--
110+43	RT	DRIVEWAY APRON	11	--	11	--	--
111+05	RT	DRIVEWAY APRON	11	--	11	--	--
111+15	LT	DRIVEWAY APRON	11	--	11	--	--
111+28	RT	COURTESY WALK	--	18	--	18	--
112+65	LT	CURB RAMP	--	53	--	53	13
112+85	LT	CURB RAMP	--	84	--	84	10
113+04	RT	CURB RAMP	--	163	--	163	10
113+32	LT	CURB RAMP	--	98	--	98	12
113+30	LT	SIDEWALK (S. MAIN)	--	20	--	20	--
113+39	RT	CURB RAMP	--	87	--	87	22
113+49	RT	SIDEWALK (EVANS)	--	24	--	24	--
100+41 TO 101+53	RT	SIDEWALK	--	580	--	580	--
101+95 TO 102+54	RT	SIDEWALK	--	275	--	275	--
102+50	RT	SIDEWALK (SHORT AV)	--	105	--	105	--
103+16 TO 105+62	RT	SIDEWALK (246 FT)	--	1,340	--	1,340	--
106+18	RT	SIDEWALK (ANNA AV)	--	25	--	25	--
106+15 TO 108+91	RT	SIDEWALK	--	1,355	--	1,355	--
109+67 TO 111+97	RT	SIDEWALK	--	1,150	--	1,150	--
100+34	LT	SIDEWALK	--	40	--	40	--
101+32 TO 112+64	LT	SIDEWALK (1,147 FT)	--	5,745	--	5,745	--
TOTAL			110	11,908	110	11,908	142

SIGN SCHEDULE

LOCATION	SIGN TYPE	SIGN DIM.	NO.	SIGN PANEL, TYPE 1		METAL POST - TY A	DELINEATOR	RELOCATE SIGN PANEL ASSEMBLY - TYPE A
				TOTAL AREA	TOTAL LENGTH			
EVANS ST	OM4-1	18"	2	4.5 SF	2	25 FT	--	--
EVANS ST	R11-2	48x30"	1	10 SF	2	26 FT	--	--
EVANS ST	W14-1	30X30"	1	6.25 SF	--	--	--	--
EVANS ST	W14-1a	36X8"	1	2 SF	--	--	--	--
OLD ST LOUIS RD	OM4-1	18"	2	4.5 SF	2	25 FT	--	--
OLD ST LOUIS RD	R11-2	48x30"	1	10 SF	2	26 FT	--	--
OLD ST LOUIS RD	W14-1	30X30"	1	6.25 SF	2	30 FT	--	--
OLD ST LOUIS RD	W5-5	30X30"	1	6.25 SF	2	30 FT	--	--
OLD ST LOUIS RD	"PRIVATE ROAD"						--	1
S MAIN ST	W11-2	30"	1	6.25 SF	2	30 FT	--	--
S MAIN ST	W16-7P	24x12"	1	2 SF	--	--	--	--
EVANS ST	--	--	--	--	--	--	2	--
EVANS ST	EX STOP SIGN	--	--	--	--	--	--	1
ANNA AVE	EX STOP SIGN	--	1	14 FT	--	--	--	1
KORRECK AVE	EX STOP SIGN	--	1	14 FT	--	--	--	1
TOTAL				58.00 SF		220 FT	2	4



LEGEND

NEW IMPROVEMENTS

- CONCRETE PAVEMENT
- REMOVE & REPLACE ASPHALT SURFACE
- PAVEMENT REMOVAL & REPLACEMENT WITH AGGREGATE SURFACE COURSE

EXISTING CONDITIONS

- AREA INLET
- BOLLARD
- CLEAN OUT
- ELECTRIC BOX
- ELECTRIC TRANSFORMER
- FIRE HYDRANT
- GRATE INLET
- GAS METER
- GAS VALVE
- LIGHT STANDARD
- MANHOLE
- PVC
- REINFORCED CONCRETE PIPE
- UTILITY MANHOLE
- UTILITY POLE
- VITRIFIED CLAY PIPE
- WATER METER
- WATER VALVE
- YARD LIGHT
- GAS LINE
- OVERHEAD ELECTRIC
- OVERHEAD UTILITIES
- SANITARY SEWER
- STORM SEWER
- TELEPHONE LINE
- UNDERGROUND ELECTRIC
- WATER LINE
- FENCE

CROSSWALK STRIPING SCHEDULE

LOCATION (S. MAIN ST.)	PAINT PAVEMENT MARKING - LINE, 6" WHITE (FT)
STA 1+33	82
SHORT AV	122
ANNA AV	66
KORRECK AV	74
EVANS ST	235
TOTAL	579

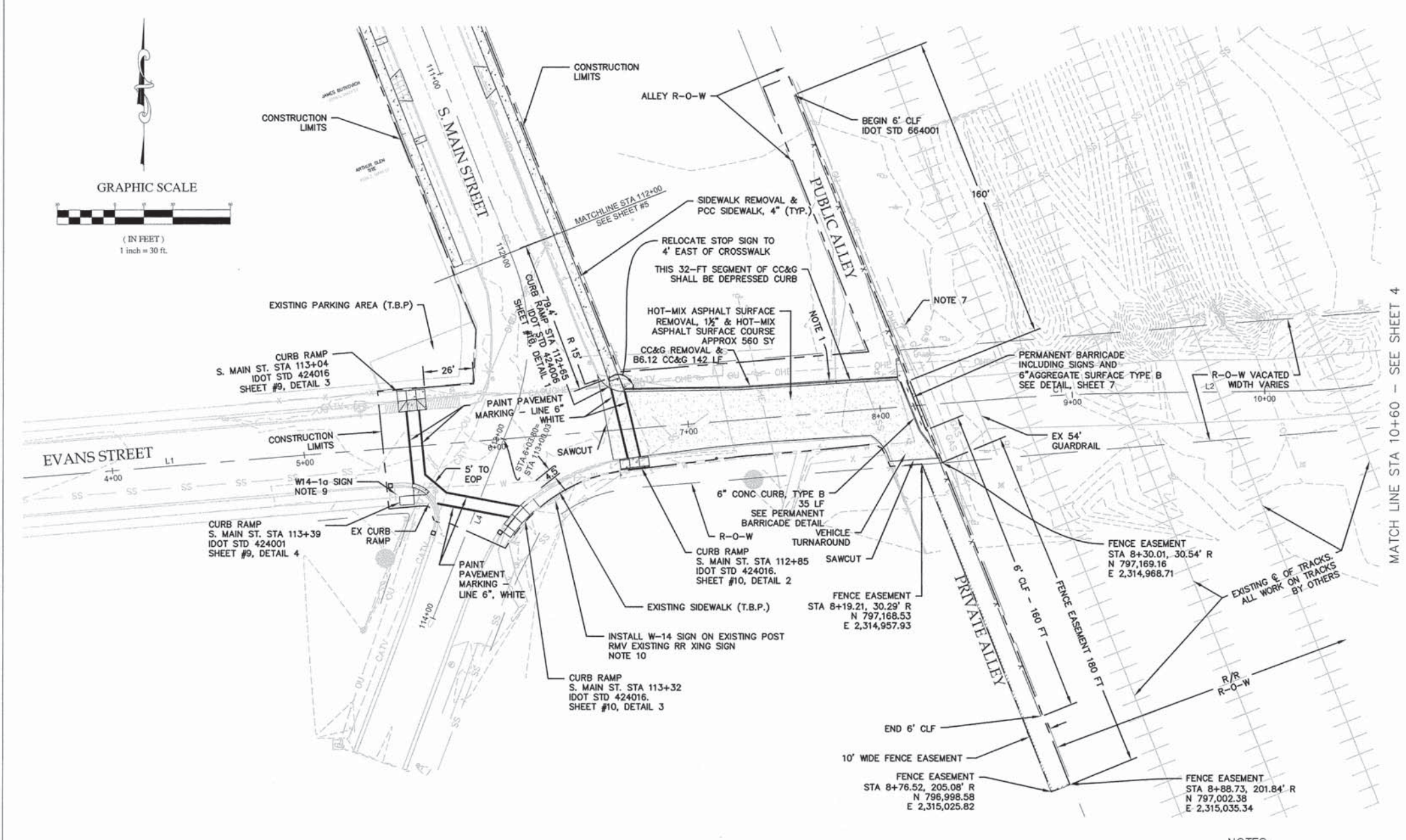
CHAIN LINK FENCING SCHEDULE

LOCATION	LENGTH (FT)
N OF EVANS ST	160 FT
S OF EVANS ST	160 FT
AT OLD ST LOUIS RD	17 FT
TOTAL	337 FT

CURB & GUTTER SCHEDULE

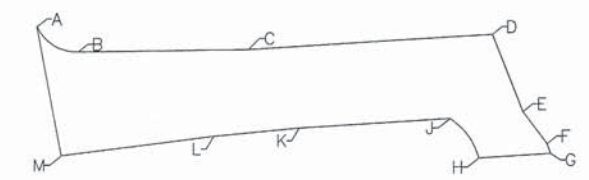
LOCATION	STA	SIDE	PAY QUANTITY			
			COMBINATION CURB & GUTTER REMOVAL (FOOT)	CONCRETE CURB TYPE B (FOOT)	COMBINATION CONCRETE CURB & GUTTER, TYPE B-6.12 (FOOT)	CONCRETE GUTTER (SPECIAL) (FOOT)
100+34	LT		6	--	6	--
100+34	RT		9	--	9	--
102+60	RT		11	--	11	--
103+22	RT		17	--	17	--
105+80	RT		14	--	14	--
106+12	LT		11	--	11	--
112+65	RT		10	--	10	--
112+85	LT		15	--	15	--
113+04	RT		--	--	15	--
113+32	LT		20	--	20	--
113+39	RT		20	--	20	--
EVANS STREET			142	35	142	--
OLD ST. LOUIS RD			--	58	130	38
TOTAL			275	93	420	38

m:\projects\0212-214 evans avenue road closure\20 design\CADD\12-214 - Design.dwg
 Plotted By: Joe Casey
 Date: 12/12/2011 4:46 PM



EVANS STREET PAVING LIMITS

- COORDINATES SHOWN ARE APPROXIMATE. PAVING LIMITS WILL BE ADJUSTED IN THE FIELD TO BEST FIT THE EXISTING CONDITIONS, AS DETERMINED BY OWNER'S REPRESENTATIVE
- POINTS B THROUGH G ARE BEGINNING, END, OR DEFLECTION POINTS FOR NEW CC&G OR CURB. THE COORDINATES SHOWN ARE AT EOP.



APPROXIMATE PAVING LIMITS			
ID	NORTHING	EASTING	STATION
A	797,214.58	2,314,789.41	STA 6+54.98
B	797,205.96	2,314,803.59	STA 6+68.42
C	797,206.86	2,314,862.26	STA 7+26.97
D	797,212.18	2,314,946.04	STA 8+10.91
E	797,185.72	2,314,956.61	STA 8+19.29
F	797,174.77	2,314,964.88	STA 8+26.62
G	797,171.46	2,314,966.18	STA 8+27.67
H	797,169.89	2,314,941.49	STA 8+02.93
J	797,183.32	2,314,931.43	STA 7+94.00
K	797,180.03	2,314,879.67	STA 7+42.14
L	797,177.14	2,314,850.24	STA 7+12.57
M	797,170.40	2,314,797.85	STA 6+59.81

NOTES:

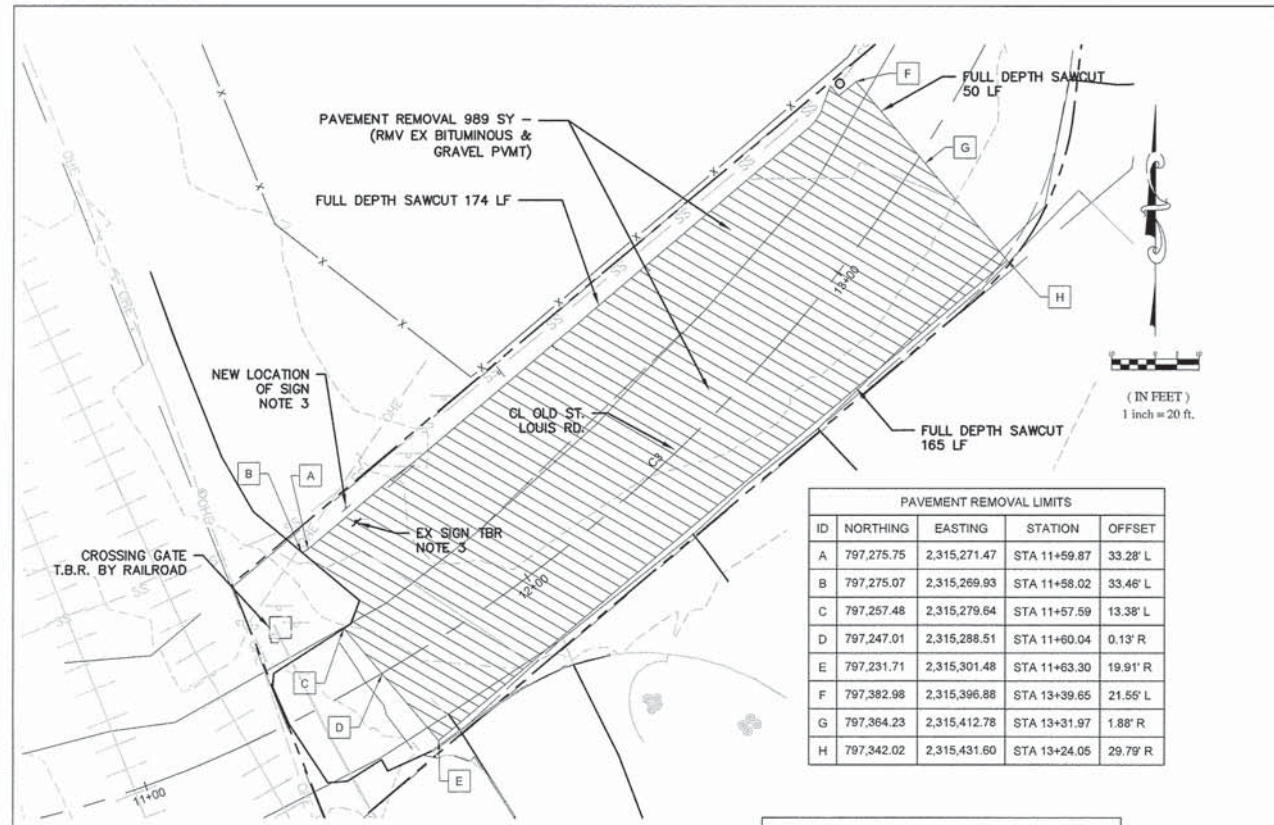
- 5-FT LONG TRANSITION FROM B6.12 CC&G TO DEPRESSED CURB.
- WHERE PAVING LIMITS COINCIDE WITH SAWCUT LINES, THE NEW PAVEMENT SHALL MATCH THE ELEVATION OF THE EXISTING PAVEMENT AT THE SAWCUT.
- MAKE FULL-DEPTH SAWCUTS WHERE NEW CURB OR CC&G IS TO BE INSTALLED IN EXISTING PAVED AREAS.
- ANY GAPS REMAINING BETWEEN HMA PAVEMENT AND ADJACENT CURB OR CC&G SHALL BE REPAIRED WITH COLD PATCH OR OTHER APPROVED BITUMINOUS PRODUCT.
- ALLOW OWNER 5 DAYS TO REMOVE TEMPORARY BARRICADES WEST OF RAILROAD TRACKS. AFTER THE PERMANENT ROAD CLOSURE BARRICADE AND SIGNAGE ARE IN PLACE BUT BEFORE CHAIN LINK FENCING IS INSTALLED.
- DELIVER MILLED PAVEMENT MATERIAL TO CITY PUBLIC WORKS YARD AS SPECIFIED.
- EXISTING FIRE HYDRANT TO BE RELOCATED BY CITY TO OTHER SIDE OF PROPOSED FENCE.
- CLF = CHAIN LINK FENCE
- INSTALL W14-1a (DEAD END) PLACARD ON EXISTING STREET SIGN POST. ORIENT THE SIGN TO FACE NORTHBOUND TRAFFIC AND WITH THE ARROW POINTING EAST TOWARD THE RAILROAD TRACKS.
- REMOVE EXISTING RR XING SIGN PLACARD AND SALVAGE IT FOR REUSE BY THE CITY OF WOOD RIVER. INSTALL THE NEW W-14 (DEAD END) SIGN IN ITS PLACE. REUSE THE EXISTING SIGN POST. PROVIDE NEW MOUNTING HARDWARE.

LEGEND

- NEW IMPROVEMENTS**
- CONCRETE PAVEMENT
 - REMOVE & REPLACE ASPHALT SURFACE
 - PAVEMENT REMOVAL & REPLACEMENT WITH AGGREGATE SURFACE COURSE

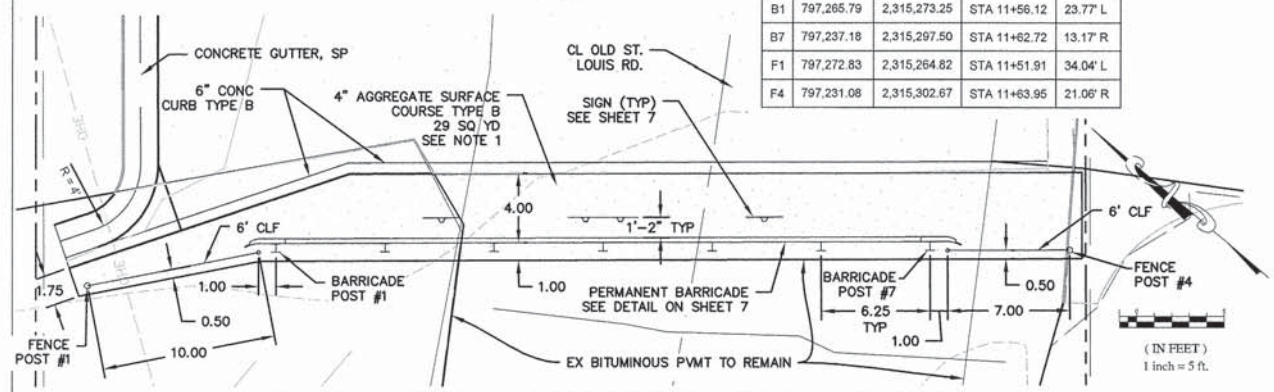
m:\Projects\2012\12-214.evans street road closure\20 design\CA00\12-214 - Design.dwg
 Plotted on: 6/5/2014 2:12 PM
 Plotted by: Joe Gunzy

F.A.U. RTE.	SECTION	COUNTY	TOTAL SHEETS	SHEET NO.
9005	11-00049-01-RR	MADISON	10	4
FEDERAL AID PROJECT		ILLINOIS CONTRACT NO. 97535		

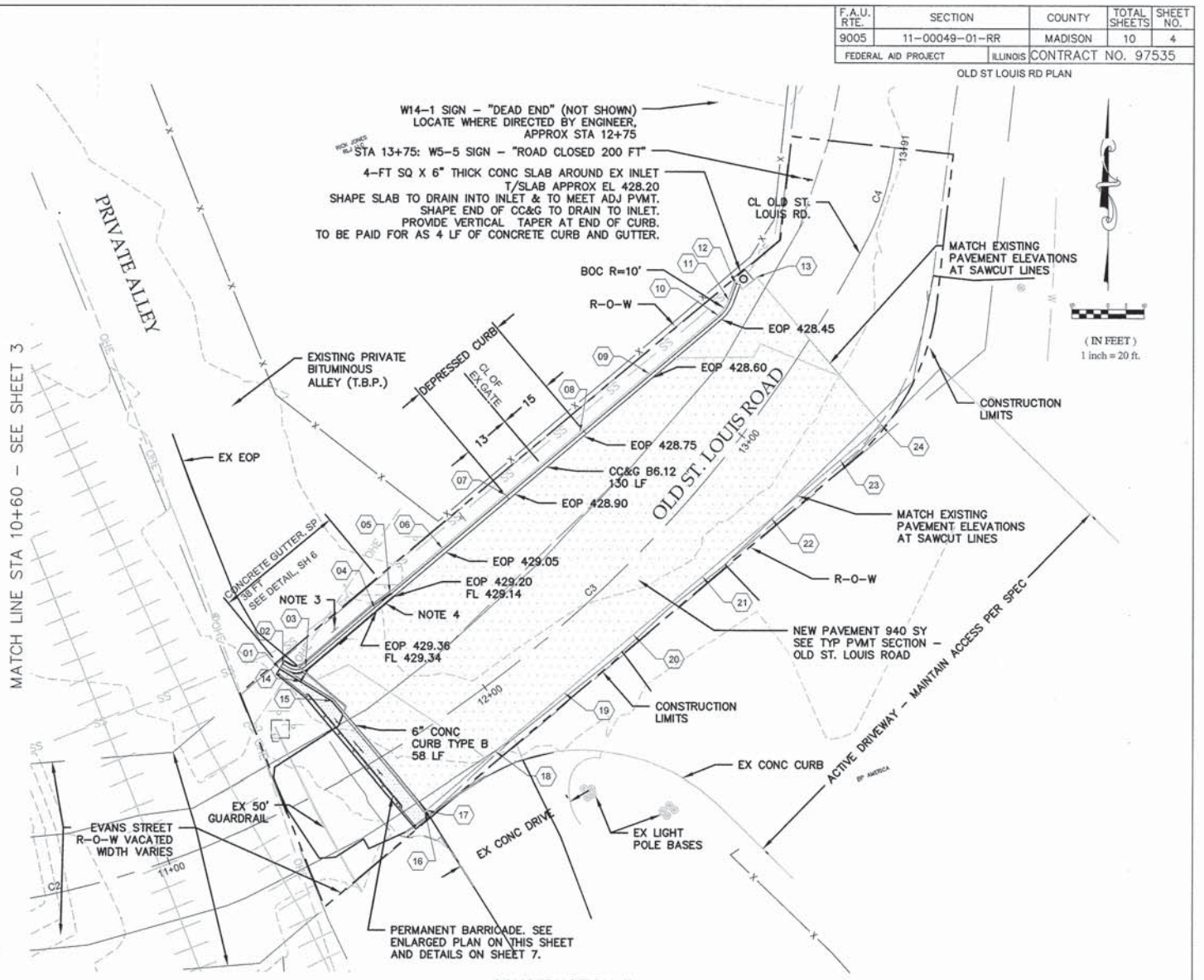


ID	NORTHING	EASTING	STATION	OFFSET
A	797,275.75	2,315,271.47	STA 11+59.87	33.28' L
B	797,275.07	2,315,269.93	STA 11+58.02	33.46' L
C	797,257.48	2,315,279.64	STA 11+57.59	13.38' L
D	797,247.01	2,315,288.51	STA 11+60.04	0.13' R
E	797,231.71	2,315,301.48	STA 11+63.30	19.91' R
F	797,382.98	2,315,396.88	STA 13+39.65	21.56' L
G	797,364.23	2,315,412.78	STA 13+31.97	1.88' R
H	797,342.02	2,315,431.60	STA 13+24.05	29.79' R

ID	NORTHING	EASTING	STATION	OFFSET
B1	797,265.79	2,315,273.25	STA 11+56.12	23.77' L
B7	797,237.18	2,315,297.50	STA 11+62.72	13.17' R
F1	797,272.83	2,315,264.82	STA 11+51.91	34.04' L
F4	797,231.08	2,315,302.67	STA 11+63.95	21.06' R



#	NORTHING	EASTING	DESCRIPTION	ELEVATION	STATION	OFFSET
1	797,274.31	2,315,284.93	BOC - BEGIN B6 CURB	430.12	STA 11+52.81	35.28' L
2	797,275.66	2,315,265.74	FL V-GUTTER - BEGIN V-GUTTER	429.62	STA 11+54.33	36.06' L
3	797,274.99	2,315,272.12	CL V-GUTTER - END OF RADIUS	429.72	STA 11+60.05	32.29' L
4	797,291.15	2,315,291.18	CL V-GUTTER - BEGIN TRANSITION TO CC&G	429.34	STA 11+67.37	35.66' L
5	797,295.48	2,315,295.38	BOC - BEGIN B6.12 CC&G	429.64	STA 11+63.95	36.78' L
6	797,307.75	2,315,309.88	BOC	429.49	STA 12+15.09	37.73' L
7	797,322.56	2,315,327.34	BOC - BEGIN DEPRESSED CURB	429.34	STA 12+40.61	37.43' L
8	797,340.10	2,315,348.01	BOC - END DEPRESSED CURB	429.19	STA 12+70.59	35.02' L
9	797,356.27	2,315,367.08	BOC	429.04	STA 12+67.70	30.86' L
10	797,372.44	2,315,386.15	BOC - BEGIN RADIUS	428.89	STA 13+23.99	24.90' L
11	797,376.69	2,315,389.09	BOC - END RADIUS	428.79	STA 13+29.54	24.79' L
12	797,381.40	2,315,390.78	BOC - END B6.12 CC&G	428.70	STA 13+34.78	25.90' L



MATCH LINE STA 10+60 - SEE SHEET 3

CONSTRUCTION PLAN
1" = 20'

#	NORTHING	EASTING	DESCRIPTION	ELEVATION	STATION	OFFSET
13	797,382.99	2,315,396.87	MEET EXISTING - SAWCUT & PAVING LIMIT	428.37	STA 13+39.65	21.56' L
14	797,270.77	2,315,270.72	BOC	430.24	STA 11+56.43	29.34' L
15	797,265.46	2,315,279.43	BOC - DEFLECTION POINT	430.42	STA 11+61.62	20.37' L
16	797,234.95	2,315,305.30	BOC - END B6 CURB	431.16	STA 11+67.99	19.12' R
17	797,235.32	2,315,305.74	EOP - NEW PAVEMENT	430.66	STA 11+68.54	19.04' R
18	797,251.49	2,315,324.81	EOP - NEW PAVEMENT	429.90	STA 11+92.23	16.12' R
19	797,267.66	2,315,343.88	EOP - NEW PAVEMENT	429.65	STA 12+16.19	14.83' R
20	797,283.83	2,315,362.95	EOP - NEW PAVEMENT	429.40	STA 12+40.20	15.18' R
21	797,300.00	2,315,382.02	EOP - NEW PAVEMENT	429.33	STA 12+64.07	17.17' R
22	797,316.16	2,315,401.08	EOP - NEW PAVEMENT	429.25	STA 12+87.59	20.78' R
23	797,332.33	2,315,420.15	EOP - NEW PAVEMENT	429.27	STA 13+10.58	25.95' R
24	797,342.03	2,315,431.59	MEET EXISTING - SAWCUT & PAVING LIMIT	429.31	STA 13+24.06	29.78' R

NOTES:

- DO NOT OPERATE EQUIPMENT OR PLACE ANY MATERIAL ON RAILROAD TRACKS. AFTER AGGREGATE HAS BEEN PLACED AROUND THE PERMANENT BARRICADE, THE FINAL DRAINAGE PATTERN ALONGSIDE THE NEAREST TRACK SHALL BE THE SAME AS EXISTING. DELIVER MILLED PAVEMENT MATERIAL TO CITY PUBLIC WORKS YARD AS SPECIFIED.
- REMOVE EXISTING TRAFFIC SIGN AT STA 11+75.50, 33' L. MOUNT EXISTING SIGN PANEL ON NEW SIGNPOST AT STA 11+75.50, 37' L.
- THE 8 FT LONG TRANSITION SECTION FROM CC&G TO CONCRETE GUTTER (SPECIAL) WILL BE PAID AS CONCRETE GUTTER (SPECIAL).
- THICKNESS AND TYPICAL SECTION OF EXISTING PAVEMENT ON OLD ST. LOUIS ROAD IS UNDETERMINED; ASSUMED TO BE ASPHALT OVER AGGREGATE BASE.

LEGEND

- NEW IMPROVEMENTS**
- CONCRETE PAVEMENT
 - REMOVE & REPLACE ASPHALT SURFACE
 - PAVEMENT REMOVAL & REPLACEMENT WITH AGGREGATE SURFACE COURSE

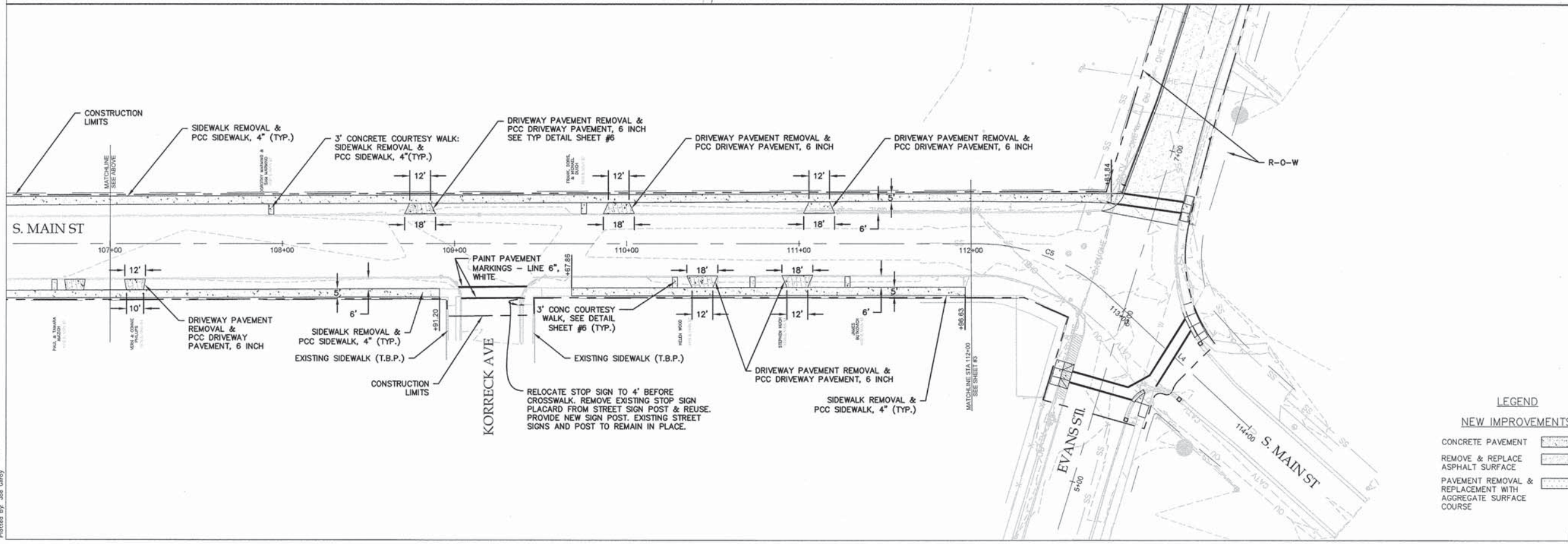
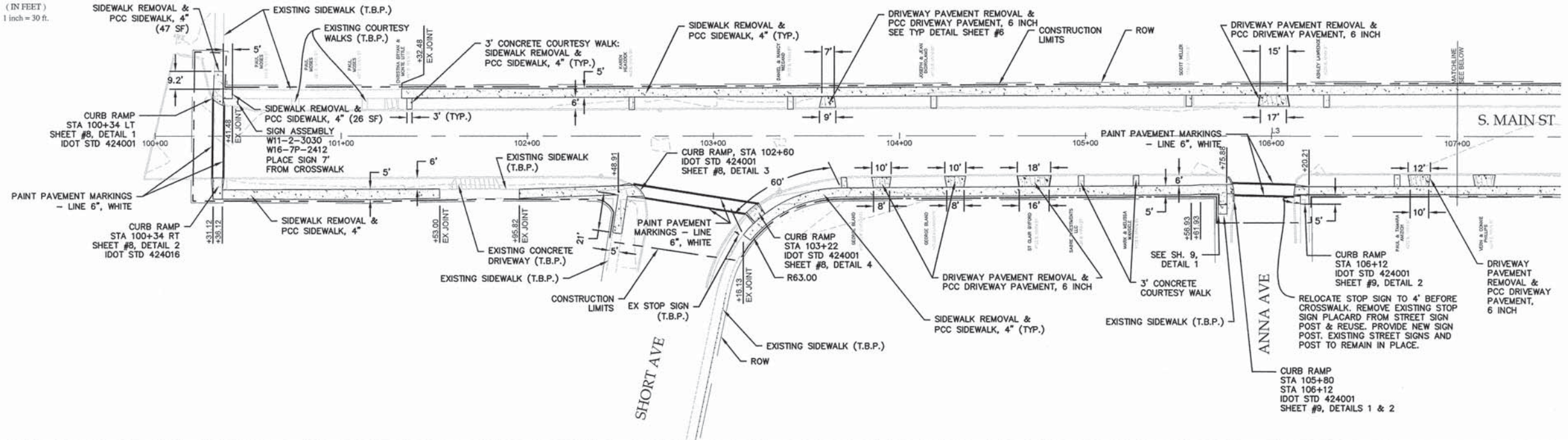
I:\projects\2014\12-214 - main avenue road closure\20 design\CADD\12-214 - Design.dwg
 Plotted: 12/21/2014 2:13 PM
 Plotted By: Joe Givney

F.A.U. RTE.	SECTION	COUNTY	TOTAL SHEETS	SHEET NO.
9005	11-00049-01-RR	MADISON	10	5
FEDERAL AID PROJECT		ILLINOIS	CONTRACT NO. 97535	

S MAIN ST PLAN



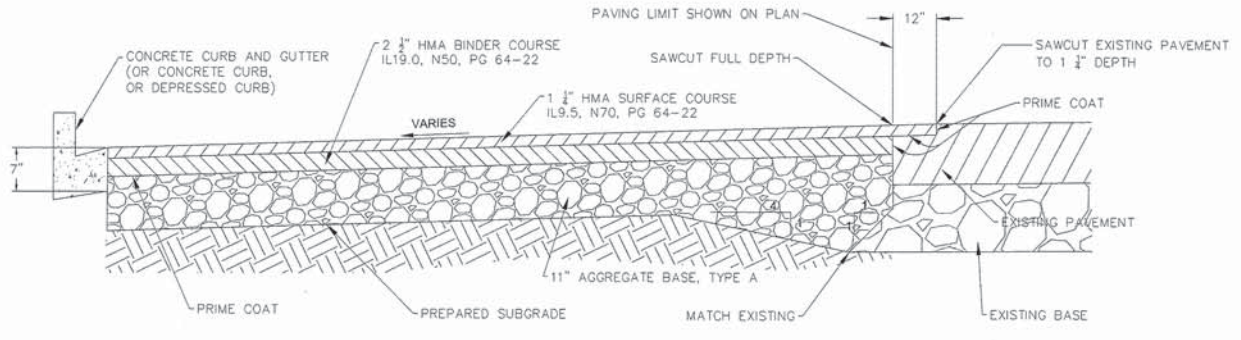
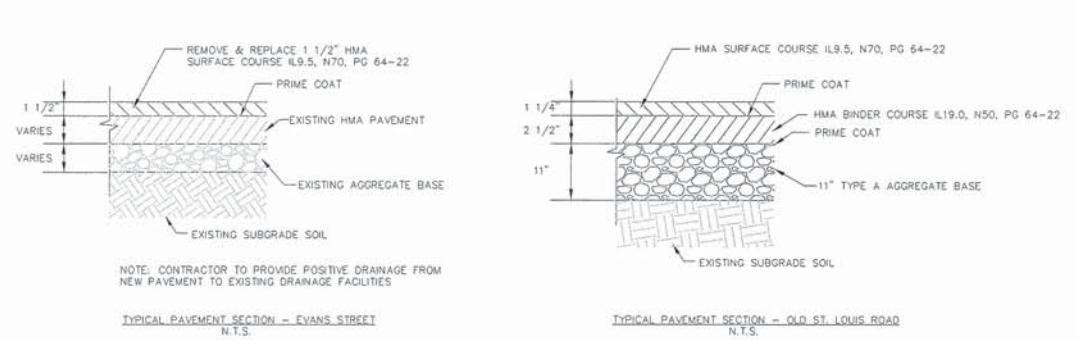
(IN FEET)
1 inch = 30 ft.



M:\Projects\2017\12-214 - Evans Avenue Road Closure\12-214 - Design.dwg
 Plotted on: 4/11/2014 at 2:22 PM
 Plotted by: Joe Givney

F.A.U. RTE.	SECTION	COUNTY	TOTAL SHEETS	SHEET NO.
9005	11-00049-01-RR	MADISON	10	6
FEDERAL AID PROJECT		ILLINOIS CONTRACT NO. 97535		

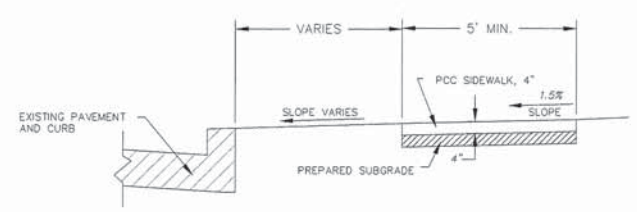
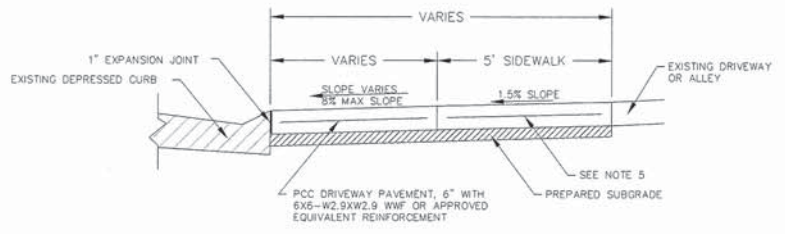
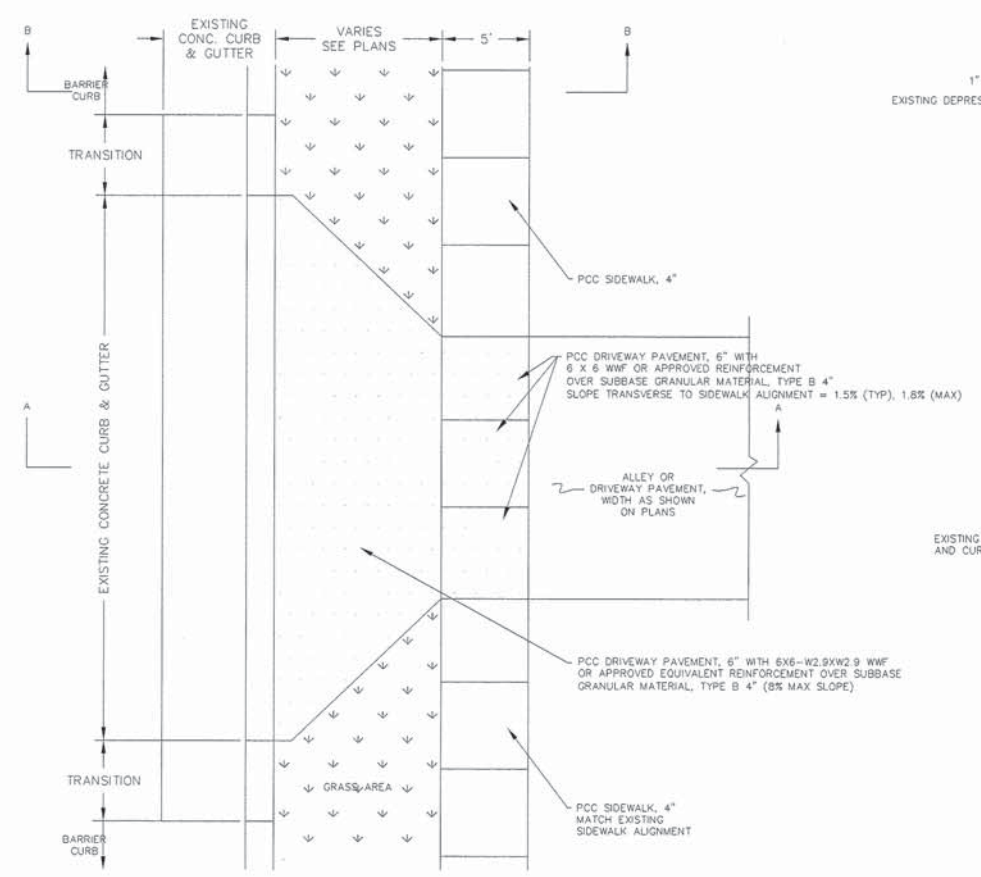
PAVING DETAILS & TYPICAL SECTIONS



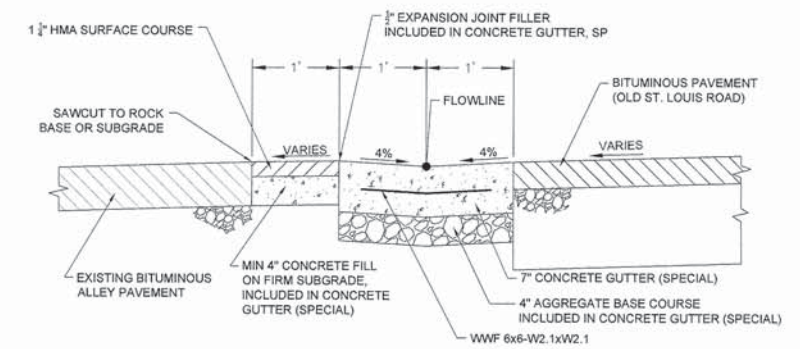
TYPICAL PAVEMENT SECTIONS
N.T.S.

TYPICAL SECTION - PROPOSED PAVEMENT, OLD ST. LOUIS ROAD

- NOTES:
1. THE EDGES OF PAVEMENT SHALL MATCH EXISTING ELEVATIONS WITH A CONSTANT SLOPE
 2. JOINT DETAIL IS SHOWN WHEN MEETING ASPHALT PAVEMENT. WHEN MEETING CONCRETE PAVEMENT, MATCH EXISTING CONCRETE ELEVATION



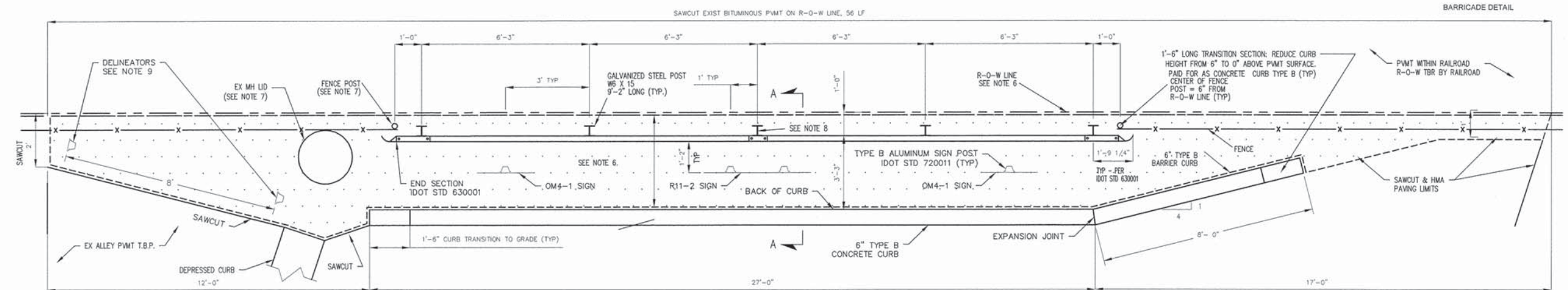
- NOTES:
1. MAXIMUM DISTANCE BETWEEN EXPANSION JOINTS SHALL BE 100' WITH CONTROL JOINTS EVENLY SPACED IN BETWEEN, TYPICALLY AT 5' INTERVALS. JOINT SPACING MAY BE ALTERED TO MEET EDGES OF DRIVEWAYS AND CURB RAMPS. MAXIMUM JOINT SPACING = 125% OF SIDEWALK WIDTH. MINIMUM JOINT SPACING = 80% OF SIDEWALK WIDTH.
 2. PROVIDE 1/2" EXPANSION MATERIAL BETWEEN PROPOSED CONCRETE SIDEWALKS, COURTESY WALKS, AND DRIVEWAYS AND BETWEEN PROPOSED PAVEMENTS AND EXISTING NON-FLEXIBLE MATERIALS.
 3. EXISTING CURB & GUTTER ADJACENT TO DRIVEWAY REPLACEMENTS MAY REQUIRE SAWCUTS AND CURB REMOVAL. INCLUDED IN UNIT PRICE FOR REMOVE & REPLACE DRIVEWAY PAVEMENT.
 4. CONTRACTOR SHALL BACKFILL, GRADE, SEED, AND MULCH ALL DISTURBED AREAS AROUND SIDEWALK & DRIVEWAY REPLACEMENT ACCORDING TO IDOT STANDARDS.
 5. WHERE SIDEWALK ROUTE CROSSES DRIVEWAY, CONSTRUCT AS PCC DRIVEWAY PAVEMENT, 6".
 6. 6x6-W2.9xW2.9 WWF IS INCLUDED IN PAYMENT FOR DRIVEWAY PAVEMENT, 6".



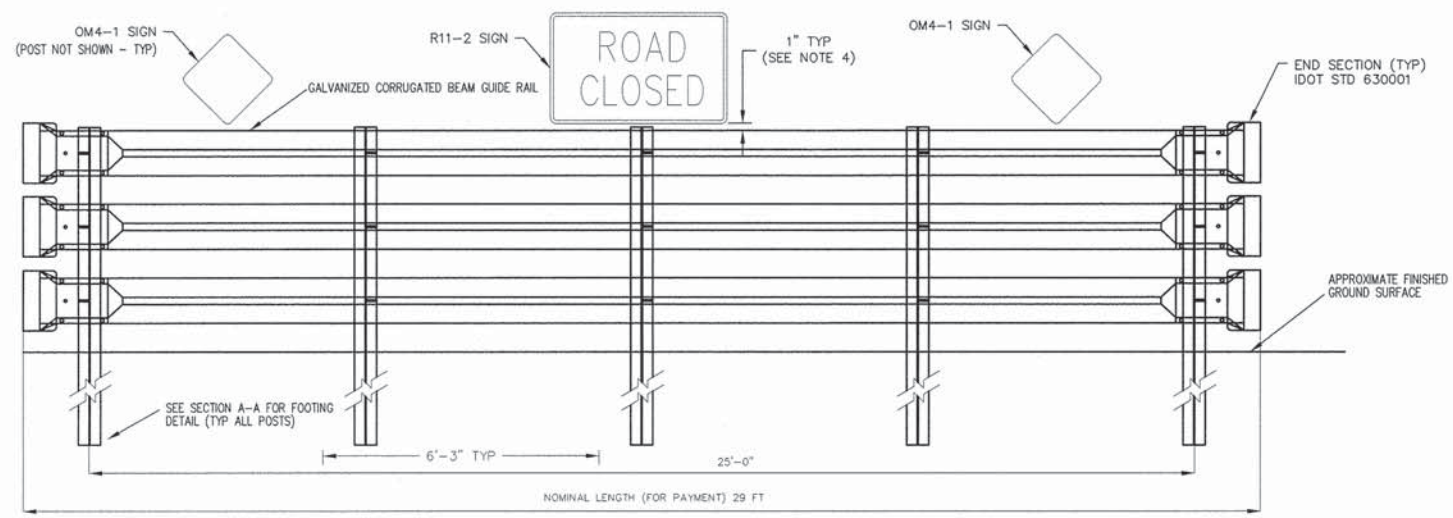
- NOTES:
1. BITUMINOUS PAVEMENT PATCHES SHALL MEET EXISTING PAVEMENT ELEVATIONS.
 2. THE THICKNESS OF THE EXISTING ADJACENT PAVEMENT IS UNKNOWN.
 3. PLACE WELDED WIRE FABRIC AT MID-HEIGHT OF SLAB. WWF SHALL NOT PASS THROUGH JOINTS. INCLUDED IN CONCRETE GUTTER (SPECIAL).

m:\Projects\2013\12-214 - Evans Avenue Road Closure\3D design\CADD\12-214 - Design.dwg
Plotted on: 4/2/2014 2:13 PM
Plotted By: Joe Olney

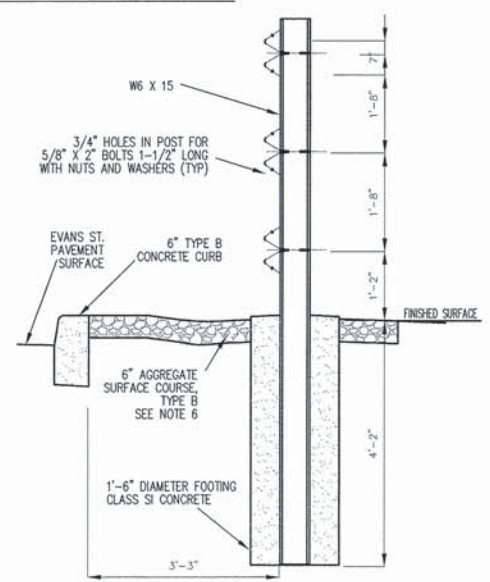
F.A.U. RTE.	SECTION	COUNTY	TOTAL SHEETS	SHEET NO.
9005	11-00049-01-RR	MADISON	10	7
FEDERAL AID PROJECT		ILLINOIS CONTRACT NO. 97535		



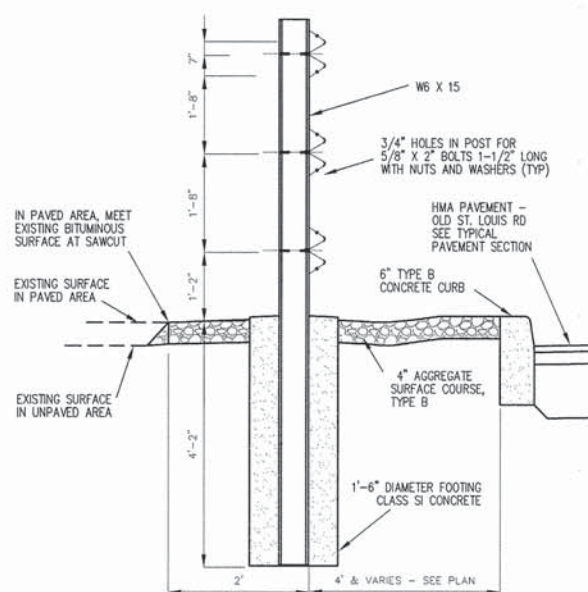
ENLARGED PLAN OF PERMANENT BARRICADE AT EVANS STREET
N.T.S.



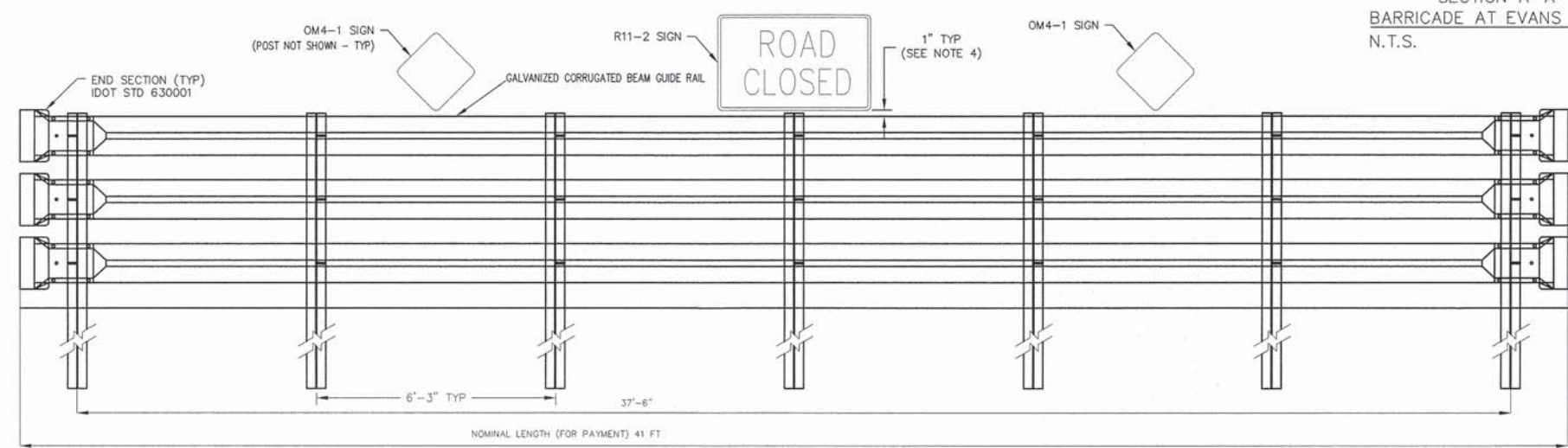
WEST ELEVATION - PERMANENT BARRICADE AT EVANS STREET
N.T.S.



SECTION A-A
BARRICADE AT EVANS STREET
N.T.S.



SECTION THROUGH
BARRICADE AT OLD ST. LOUIS ROAD
N.T.S.



EAST ELEVATION - PERMANENT BARRICADE AT OLD ST. LOUIS ROAD
N.T.S.

PERMANENT BARRICADE NOTES

- OBJECT MARKER SIGNS SHALL BE TYPE OM4-1, SIZE 18" X 18".
- ROAD CLOSED SIGN SHALL BE FHWA STANDARD HIGHWAY SIGN R11-2, DIMENSIONS 48" X 36", BLACK LEGEND ON WHITE BACKGROUND.
- SIGN BASE AND SIGN SUPPORT MATERIALS SHALL MEET THE REQUIREMENTS OF IDOT SPECIFICATIONS, SECTIONS 1091 AND 1093. SIGN FACES SHALL BE OF HIGH INTENSITY PRISMATIC SHEETING, 3M S800 SERIES OR EQUAL.
- SIGN MOUNTING HEIGHT SHALL BE APPROXIMATELY 1' ABOVE TOP OF BARRICADE VERTICAL MEMBER.
- PROVIDE ALTERNATE RED AND WHITE REFLECTIVE SHEETING STRIPES ON ALUMINUM SUBSTRATE ATTACHED TO ALL BARRICADE RAILS AS SPECIFIED. BEFORE APPLYING THE REFLECTIVE SHEETING, PREPARE THE SURFACES OF THE RAILS AS RECOMMENDED BY THE SHEETING MANUFACTURER.
- WITHIN LIMITS INDICATED (APPROX 21 FT), REMOVE EXISTING PAVEMENT AND REPLACE WITH 6" AGGREGATE SURFACE, TYPE B, AS FOLLOWS:
 - SAWCUT ALL ARCHING.
 - REMOVE EXISTING BITUMINOUS PAVEMENT LAYERS, IN UNPAVED AREAS, REMOVE TOPSOIL.
 - GRADE THE UNDERLYING SUBGRADE TO DRAIN TOWARD NEAREST LOW POINT ON THE RAILROAD R-0-W LINE. UNDERCUT THROUGH EXISTING EARTH OR BASE COURSE MATERIAL, AS NEEDED.
 - PLACE MINIMUM THICKNESS 6" AGGREGATE SURFACE, TYPE B, GRADATION CA-7.
 - GRADE SMOOTH, COMPACT BY TAMPING, ROLLING, OR RIDING OVER WITH HEAVY EQUIPMENT UNTIL AGGREGATE IS FIRMLY SEATED.
 - DO NOT COVER OR OBSCURE MAN-HOLE LIDS, VALVE BOXES, ETC.
 - PROVIDE COMPACTED ROCK AS NECESSARY TO MEET THE FOLLOWING REQUIREMENTS:
 - SURFACE OF CRUSHED ROCK SHALL EQUAL TOP OF CURB ELEVATION FOR MIN 12" BEHIND CURB.
 - SURFACE ELEVATION AT FOOTING SHALL BE WITHIN 1 INCHES OF TOP OF CURB ELEVATION.
 - ALL FOOTINGS SHALL HAVE THE SAME TOP ELEVATION SO BARRICADE RAILS ARE LEVEL.
- BEFORE SETTING FENCE POSTS, CONFIRM THAT FENCE WILL NOT BLOCK MAN-HOLE ACCESS.
- PRELIMINARY COORDINATES FOR CENTER OF POST ARE N 791, 198.8 E 2,314,565.5.
- PROVIDE TWO BIDIRECTIONAL DELINEATORS, (ONE SINGLE REFLECTOR ON EACH SIDE OF POST), IDOT STD 630001 & 720011, LOCATE 1' OFFSET FROM SAWCUT EOP, WITH YELLOW REFLECTORS FACING DRIVERS EXITING THE ALLEY AND WHITE REFLECTORS FACING DRIVERS ENTERING THE ALLEY.
- POSTS FOR ROAD CLOSURE BARRICADE MAY NOT BE DRIVEN (TO AVOID DAMAGE TO SEWER BELOW).
- UTILITIES ARE NOT SHOWN HERE. SEE PLAN SHEET.
- SEE SHEET 4 FOR PLAN OF BARRICADE AT OLD ST. LOUIS ROAD.

M:\Projects\2013\12-214 Evans Avenue Road Closure\20 Design\CADD\12-214 - Design.dwg
 Plotted By: S. G. Gandy
 Date: 12/19/13 4:45 PM

F.A.U. RTE.	SECTION	COUNTY	TOTAL SHEETS	SHEET NO.
9005	11-00049-01-RR	MADISON	10	10
FEDERAL AID PROJECT		ILLINOIS CONTRACT NO. 97535		

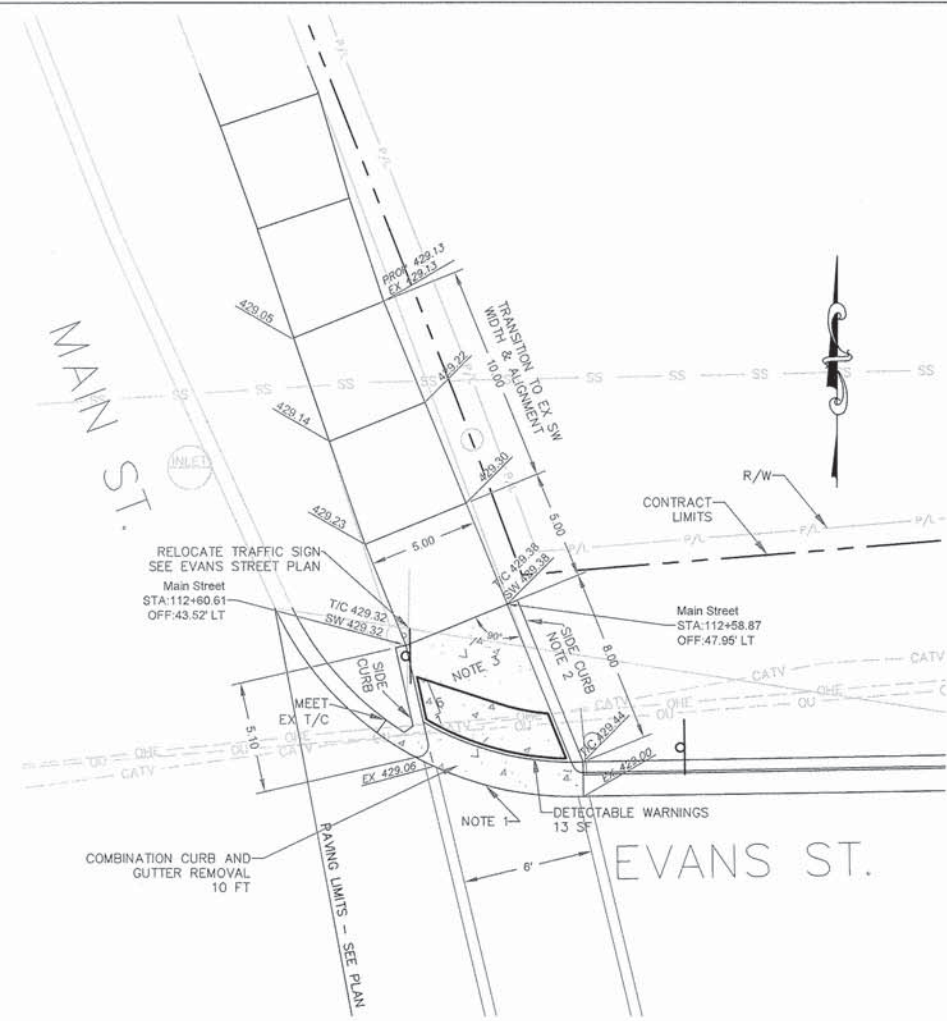
CURB RAMP DETAILS (3)



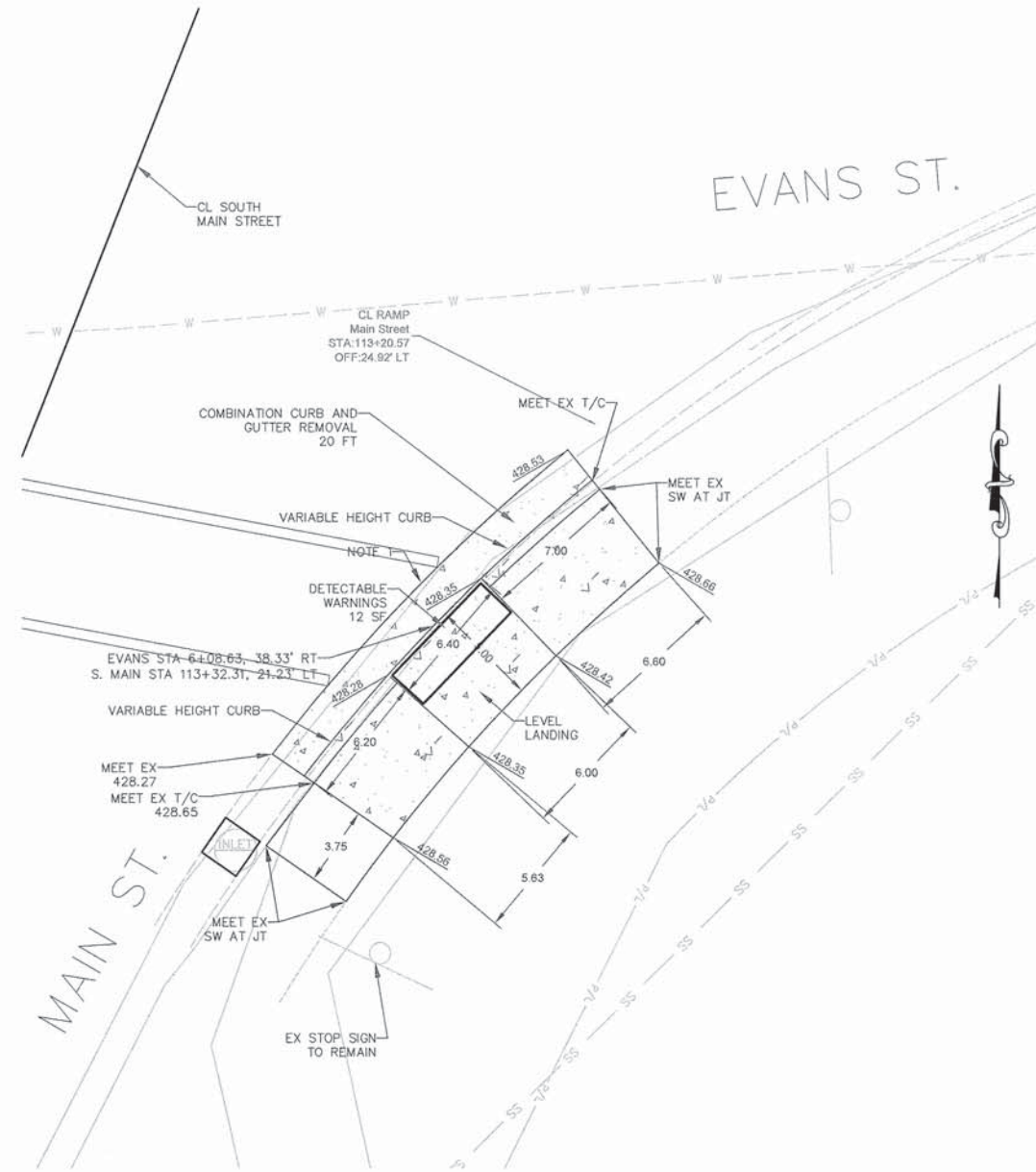
(IN FEET)
1 inch = 4 feet

NOTES:

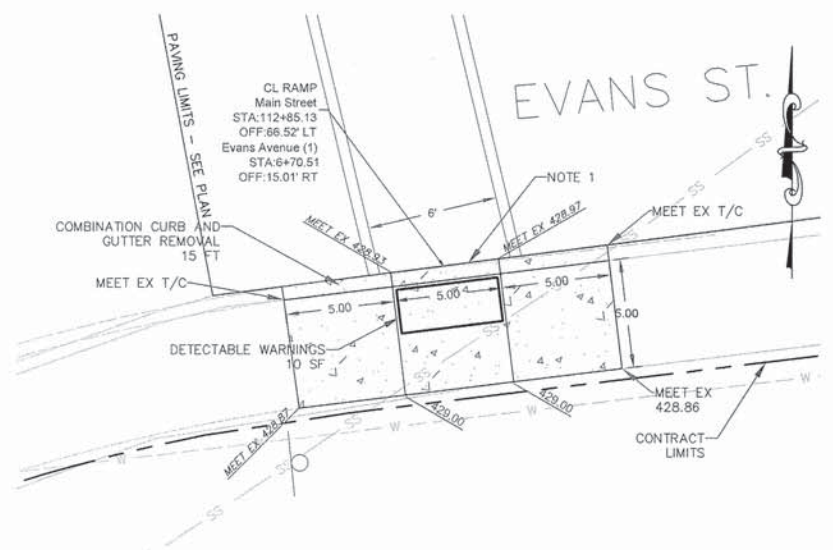
1. REMOVE EXISTING CC&G AND REPLACE IT WITH DEPRESSED CURB. PROVIDE A 1-FT LONG TRANSITION AT EACH END BETWEEN THE DEPRESSED CURB AND THE EXISTING C&G.
2. CURB SHOWN IN DETAIL MAY BE POURED INTEGRALLY WITH SIDEWALK.
3. THIS SLAB SHALL BE REINFORCED WITH WWF 6 X 6 - W2.9 X W2.9.
4. SEE SHEET 3 FOR LOCATIONS OF EXISTING STOP SIGNS.



EVANS AVENUE CURB RAMP DETAIL 1
STA 6+65, LT SIDE
(MAIN STREET STA 112+65, LT SIDE)
424006



EVANS AVENUE CURB RAMP DETAIL 3
STA 6+09, RT SIDE
(MAIN STREET STA 113+32, LT SIDE)
424016



EVANS AVENUE CURB RAMP DETAIL 2
STA 6+71, RT SIDE
(MAIN STREET STA 112+85, LT SIDE)
424016

m:\Projects\2012\2-214 evans avenue road closure\20 design\CADD\12-214 - Curb Ramps.dwg
Plotted By: Joe Ezrey
4:55 PM