



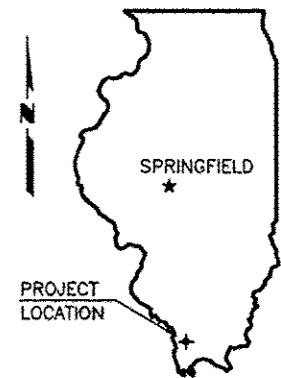
06-13-14 LETTING ITEM 218

STATE OF ILLINOIS
DEPARTMENT OF TRANSPORTATION
PLANS FOR PROPOSED

SURFACE TRANSPORTATION PROGRAM

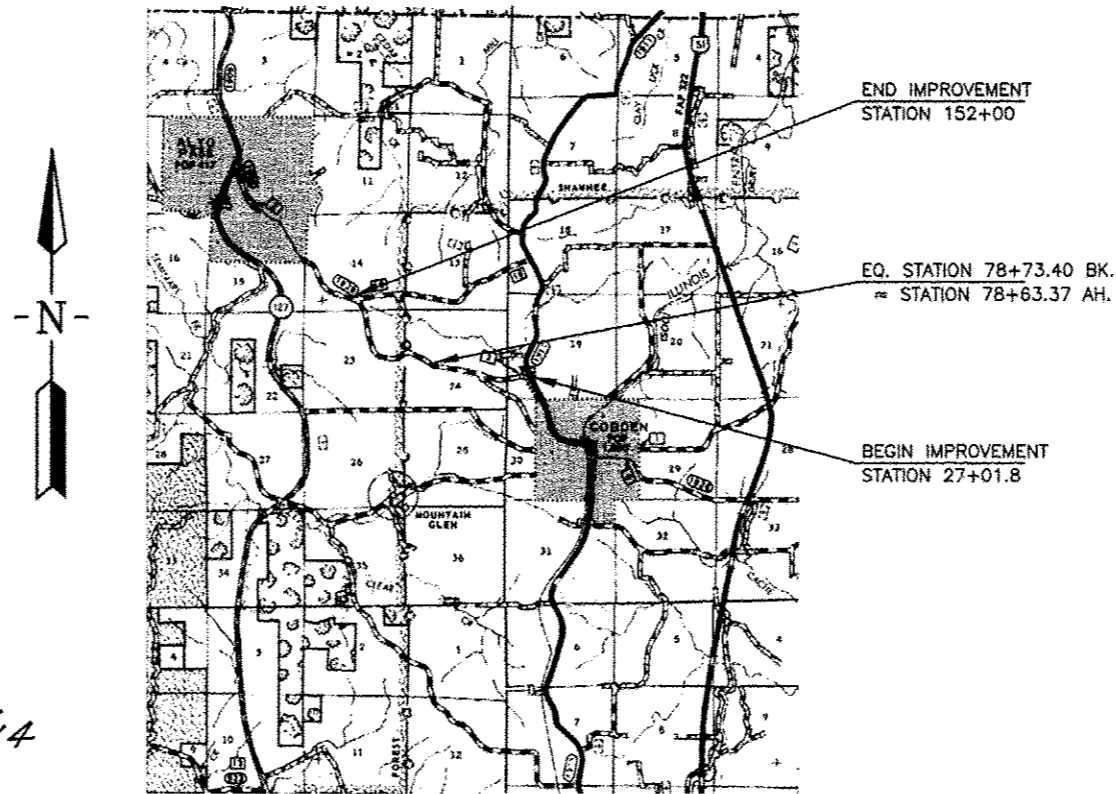
FAS ROUTE 1928 (SKYLINE DRIVE)
SECTION 99-00088-00-RS
PROJECT NO. SR-1928(101)
JOB NO. C-99-099-00

ROUTE	SECTION	COUNTY	TOTAL SHEETS	SHEET NO.
FAS 1928	99-00088-00-RS	UNION	22	1
PROJECT NO. SR-1928(101)			CONTRACT NO. 99139	



UNION COUNTY

SEE SHEET 2 FOR INDEX OF SHEETS



CLASSIFICATION : COLLECTOR
ADT : 1450
DESIGN SPEED : 50 MPH

CONTRACT NO. 99139



4/11/14

Edward W. Miller
PROFESSIONAL ENGINEER
#062-025277
EXPIRES NOV. 30, 2015

LOCATION MAP

SCALE: 1" = 2 MILES

NET LENGTH OF IMPROVEMENT = 12,508.23 FT. = 2.3690 MILES

E. MILLER ENGINEERING, INC.
CONSULTING ENGINEERS
HARRISBURG, ILLINOIS

ILLINOIS DEPARTMENT OF TRANSPORTATION	
Approved	<u>April 11, 2014</u> <i>Dennis Grammer</i> Union County Engineer
Passed	<u>April 15, 2014</u> <i>Dennis W. Hillebrand</i> District 9 Engineer of Local Roads and Streets
Releasing for Bid Based on Limited Review	<u>April 15, 2014</u> <i>Jeffrey L. Keiser</i> Deputy Director of Highways, Region 5 Engineer

ROUTE	SECTION	COUNTY	TOTAL SHEETS	SHEET NO.
FAS 1928	99-00088-00-RS	UNION	22	2
PROJECT NO. SR-1928 (101)			CONTRACT NO. 99139	

SUMMARY OF QUANTITIES

<u>CODE NO.</u>	<u>PAY ITEM</u>	<u>UNIT</u>	<u>TOTAL</u>
X5000015*	REMOVE AND RE-INSTALL PIPE CULVERTS	FOOT	17
20200100	EARTH EXCAVATION	CU YD	3,760
20200200	ROCK EXCAVATION	CU YD	270
20400100	BORROW EXCAVATION	CU YD	4,040
20800150	TRENCH BACKFILL	CU YD	64
25000200	SEEDING, CLASS 2	ACRE	5.2
25000400	NITROGEN FERTILIZER NUTRIENT	POUND	468
25000500	PHOSPHORUS FERTILIZER NUTRIENT	POUND	468
25000600	POTASSIUM FERTILIZER NUTRIENT	POUND	468
25000700	AGRICULTURAL GROUND LIMESTONE	TON	10.4
25100115	MULCH, METHOD 2	ACRE	5.2
25100630	EROSION CONTROL BLANKET	SQ YD	7,150
28000250	TEMPORARY EROSION CONTROL SEEDING	POUND	520
28000315	AGGREGATE DITCH CHECKS	TON	510
28000400	PERIMETER EROSION BARRIER	FOOT	4,520
28000500	INLET AND PIPE PROTECTION	EACH	6
28100807	STONE DUMPED RIPRAP, CLASS A4	TON	20
40200800	AGGREGATE SURFACE COURSE, TYPE B	TON	110
40600100	BITUMINOUS MATERIALS (PRIME COAT)	GALLON	770
40600300	AGGREGATE (PRIME COAT)	TON	12
40600982	HOT-MIX ASPHALT SURFACE REMOVAL - BUTT JOINT	SQ YD	760
40603090	HOT-MIX ASPHALT BINDER COURSE, IL-19.0, N90	TON	11,570
40603320	HOT-MIX ASPHALT SURFACE COURSE, MIX "C", N90	TON	2,800
48101200	AGGREGATE SHOULDERS, TYPE B	TON	2,790
50104400	CONCRETE HEADWALL REMOVAL	EACH	11
50105220	PIPE CULVERT REMOVAL	FOOT	17
50800105	REINFORCEMENT BARS	POUND	970
54002050	EXPANSION BOLTS 3/4 INCH X 9 INCH	EACH	12
54003000	CONCRETE BOX CULVERTS	CU YD	5.9
542A0223	PIPE CULVERTS, CLASS A, TYPE 1 18"	FOOT	90
542A0229	PIPE CULVERTS, CLASS A, TYPE 1 24"	FOOT	46
542A1063	PIPE CULVERTS, CLASS A, TYPE 2 18"	FOOT	116
542D0220	PIPE CULVERTS, CLASS D, TYPE 1 15"	FOOT	558
542D0223	PIPE CULVERTS, CLASS D, TYPE 1 18"	FOOT	28
542D0229	PIPE CULVERTS, CLASS D, TYPE 1 24"	FOOT	28
Δ 63000003	STEEL PLATE BEAM GUARDRAIL, TYPE A, 9 FOOT POSTS	FOOT	150
Δ 63100167	TRAFFIC BARRIER TERMINAL, TYPE 1 (SPECIAL) TANGENT	EACH	12
Δ 63200310	GUARDRAIL REMOVAL	FOOT	50
Δ 63301210	REMOVE AND REERECT STEEL PLATE BEAM GUARDRAIL, TYPE A	FOOT	1,012.5
67100100	MOBILIZATION	L SUM	1
70300100	SHORT TERM PAVEMENT MARKING	FOOT	1,252
70300220	TEMPORARY PAVEMENT MARKING - LINE 4"	FOOT	45,670
Δ 78001110	PAINT PAVEMENT MARKING - LINE 4"	FOOT	45,670

* SEE SPECIAL PROVISIONS

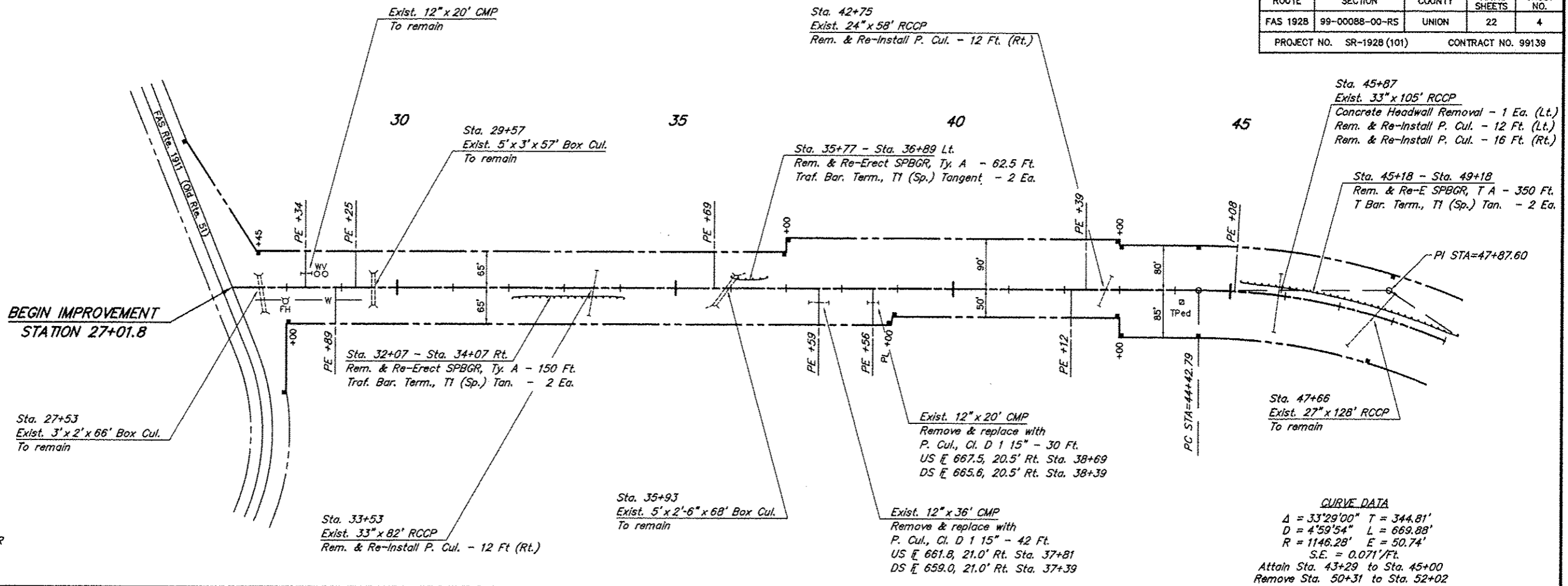
Δ SPECIALTY ITEMS

INDEX OF SHEETS

1. COVER SHEET
2. SUMMARY OF QUANTITIES & INDEX OF SHEETS
3. TYPICAL SECTIONS
- 4.-8. PLAN & PROFILE
- 9.-10. EROSION CONTROL PLAN
11. MISCELLANEOUS DETAILS
12. ENTRANCE & SIDE ROAD DETAILS
13. BOX CULVERT EXTENSION - STA. 78+38 RT.
14. BOX CULVERT EXTENSION - STA. 89+83 RT.
- 15.-22. CROSS SECTIONS
 - STANDARDS 280001-07 TEMPORARY EROSION CONTROL
 - 630001-10 STEEL PLATE BEAM GUARD RAIL
 - 630301-06 SHLDR WIDENING FOR TY 1 (SP) TERMINALS
 - 701001-02 TRAFFIC CONTROL
 - 701006-05 TRAFFIC CONTROL
 - 701011-04 TRAFFIC CONTROL
 - 701201-04 TRAFFIC CONTROL
 - 701206-03 TRAFFIC CONTROL
 - 701301-04 TRAFFIC CONTROL
 - 701306-03 TRAFFIC CONTROL
 - 701311-03 TRAFFIC CONTROL
 - 701901-03 TRAFFIC CONTROL DEVICES
 - 780001-04 TYPICAL PAVEMENT MARKINGS
 - BLR-21-9 TYP APPLICATION OF TRAF CONTR DEVICES
 - BLR-24-2 MAILBOX TURNOUT

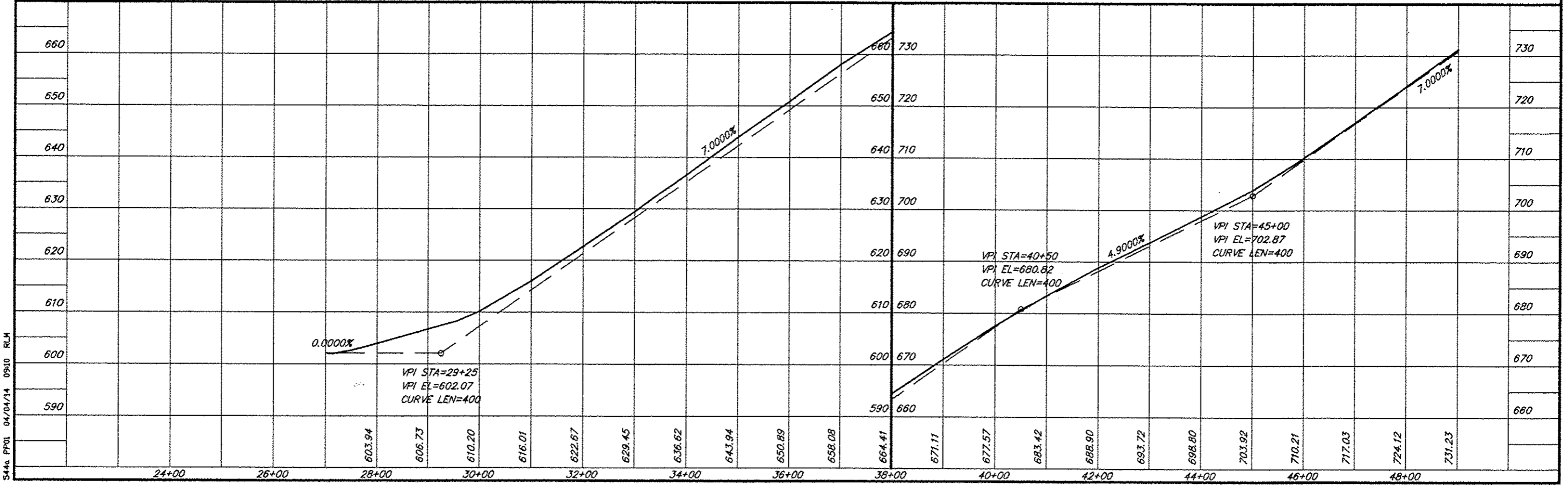
SUMMARY OF QUANTITIES
& INDEX OF SHEETS
FAS ROUTE 1928
SECTION 99-00088-00-RS
PROJECT NO. SR-1928 (101)
JOHNSON COUNTY

ROUTE	SECTION	COUNTY	TOTAL SHEETS	SHEET NO.
FAS 192B	99-00088-00-RS	UNION	22	4
PROJECT NO. SR-192B (101)			CONTRACT NO. 99139	



SCALES:
 1" = 200' HOR
 1" = 20' VER

CURVE DATA
 $\Delta = 33'29''00''$ $T = 344.81'$
 $D = 4'59'54''$ $L = 669.88'$
 $R = 1146.28'$ $E = 50.74'$
 $S.E. = 0.071'/ft.$
 Attain Sta. 43+29 to Sta. 45+00
 Remove Sta. 50+31 to Sta. 52+02



S44a P001 04/04/14 09:10 RLM

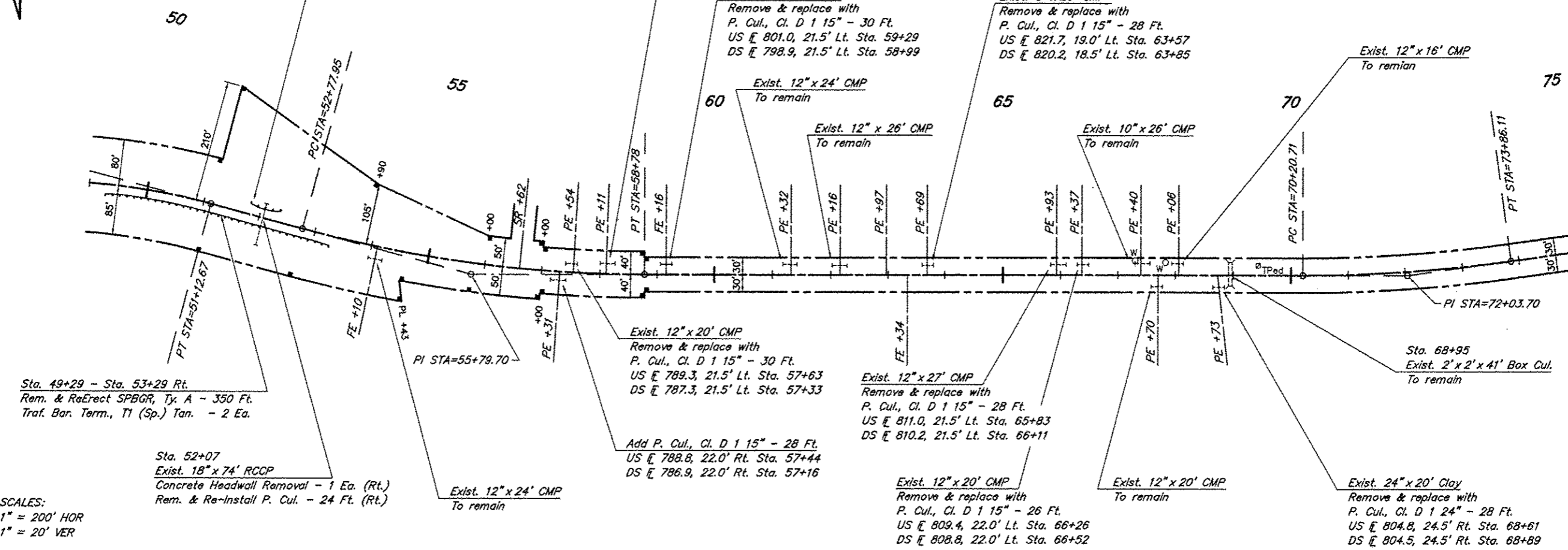
ROUTE	SECTION	COUNTY	TOTAL SHEETS	SHEET NO.
FAS 1928	99-00088-00-RS	UNION	22	5
PROJECT NO. SR-1928 (101)			CONTRACT NO. 99139	

Sta. 51+82 - Sta. 52+32 Lt.
Guardrail Removal - 50 Ft.
(See Special Provisions)

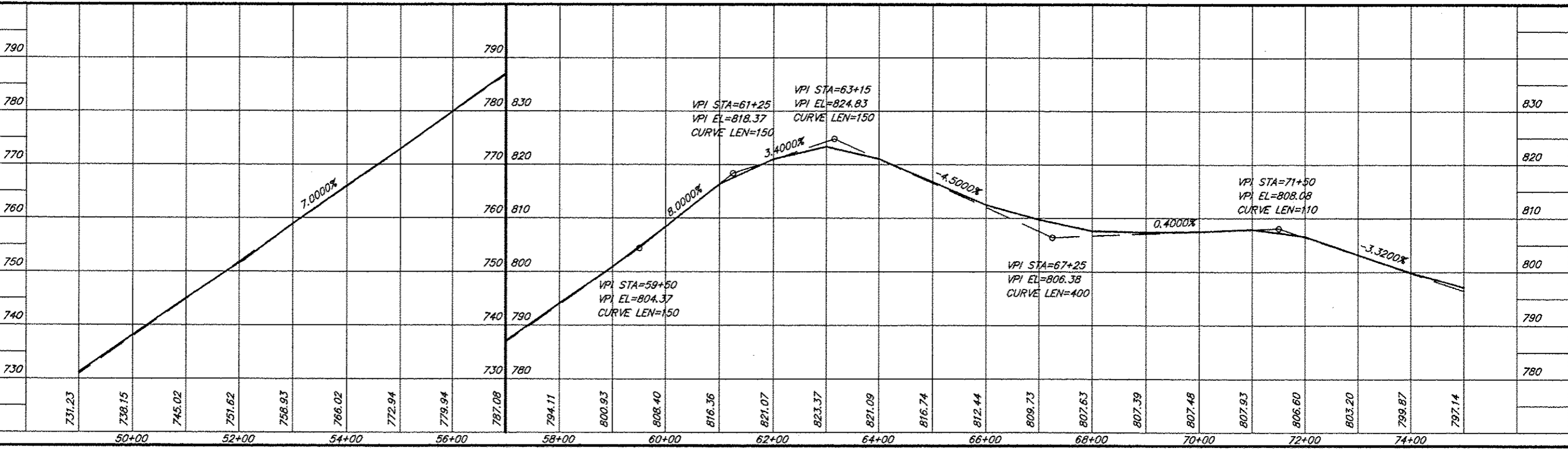
CURVE DATA
 $\Delta = 15^{\circ}00'00''$ $T = 301.75'$
 $D = 2^{\circ}29'59''$ $L = 600.05'$
 $R = 2292.01'$ $E = 19.78'$
 $S.E. = 0.046'/ft.$
 Attain Sta. 52+03 to Sta. 53+53
 Remove Sta. 58+28 to Sta. 59+78

Exist. 12" x 26' PVC
 Remove & replace with
 P. Cul., Cl. D 1 15" - 36 Ft.
 US \bar{E} 793.9, 21.5' Lt. Sta. 58+29
 DS \bar{E} 791.3, 21.5' Lt. Sta. 57+93

CURVE DATA
 $\Delta = 7^{\circ}55'00''$ $T = 182.99'$
 $D = 2^{\circ}10'00''$ $L = 365.41'$
 $R = 2644.58'$ $E = 6.32'$
 $S.E. = 0.041'/ft.$
 Attain Sta. 69+21 to Sta. 70+71
 Remove Sta. 73+36 to Sta. 74+86

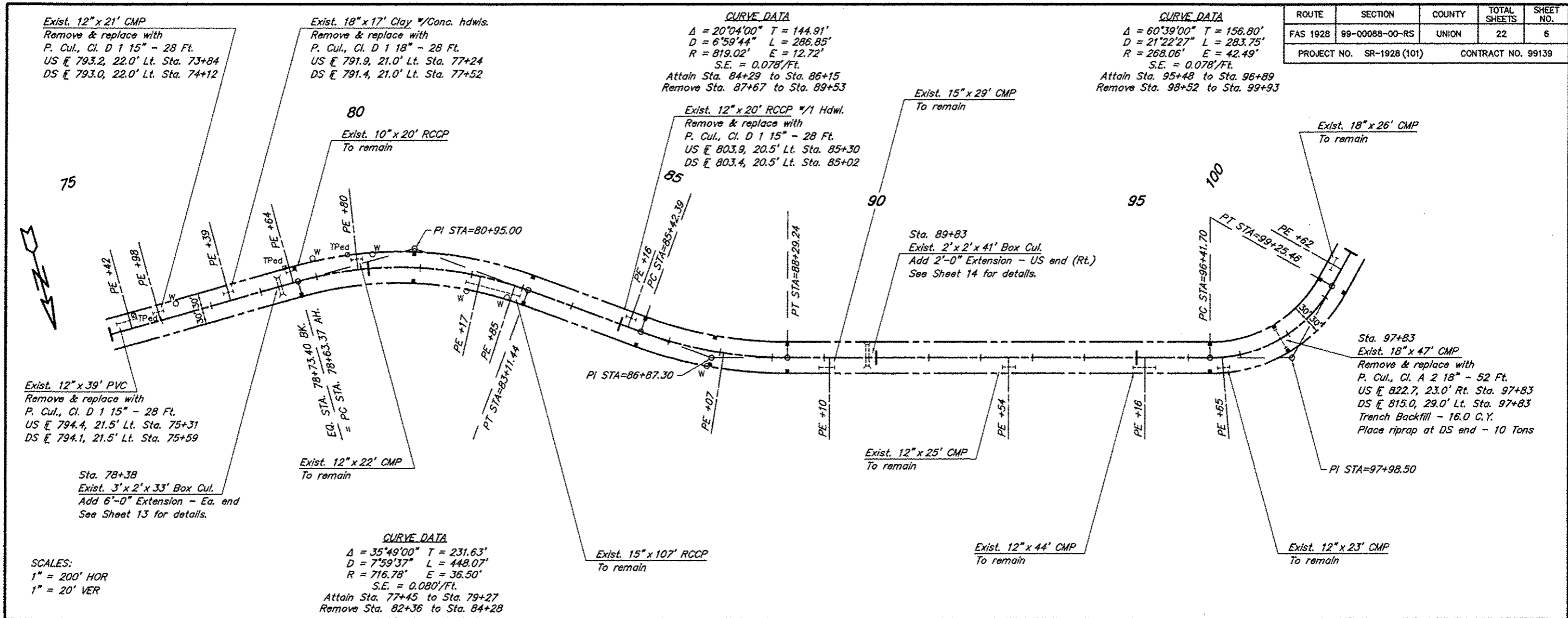


SCALES:
 1" = 200' HOR
 1" = 20' VER



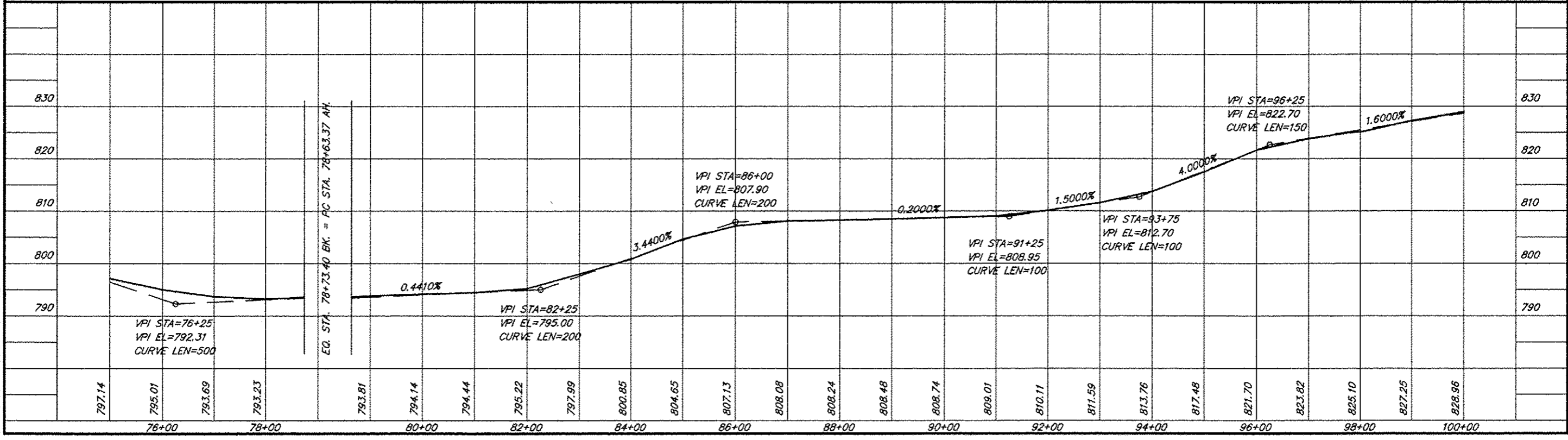
5446 PP02 04/14/14 08:33 RLH

ROUTE	SECTION	COUNTY	TOTAL SHEETS	SHEET NO.
FAS 1928	99-00088-00-RS	UNION	22	6
PROJECT NO. SR-1928 (101)			CONTRACT NO. 99139	

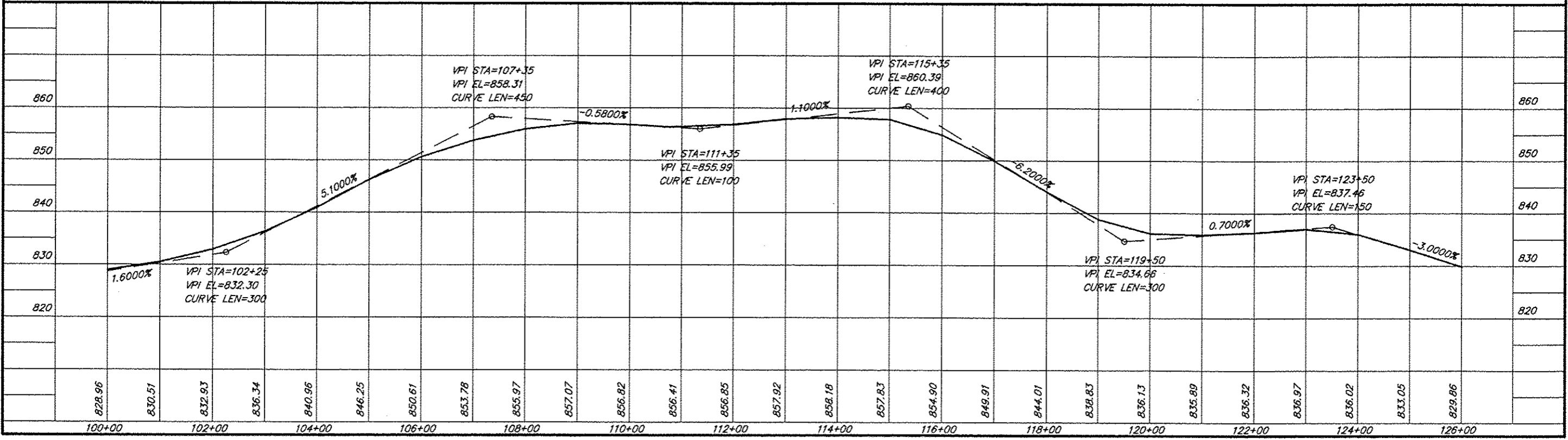
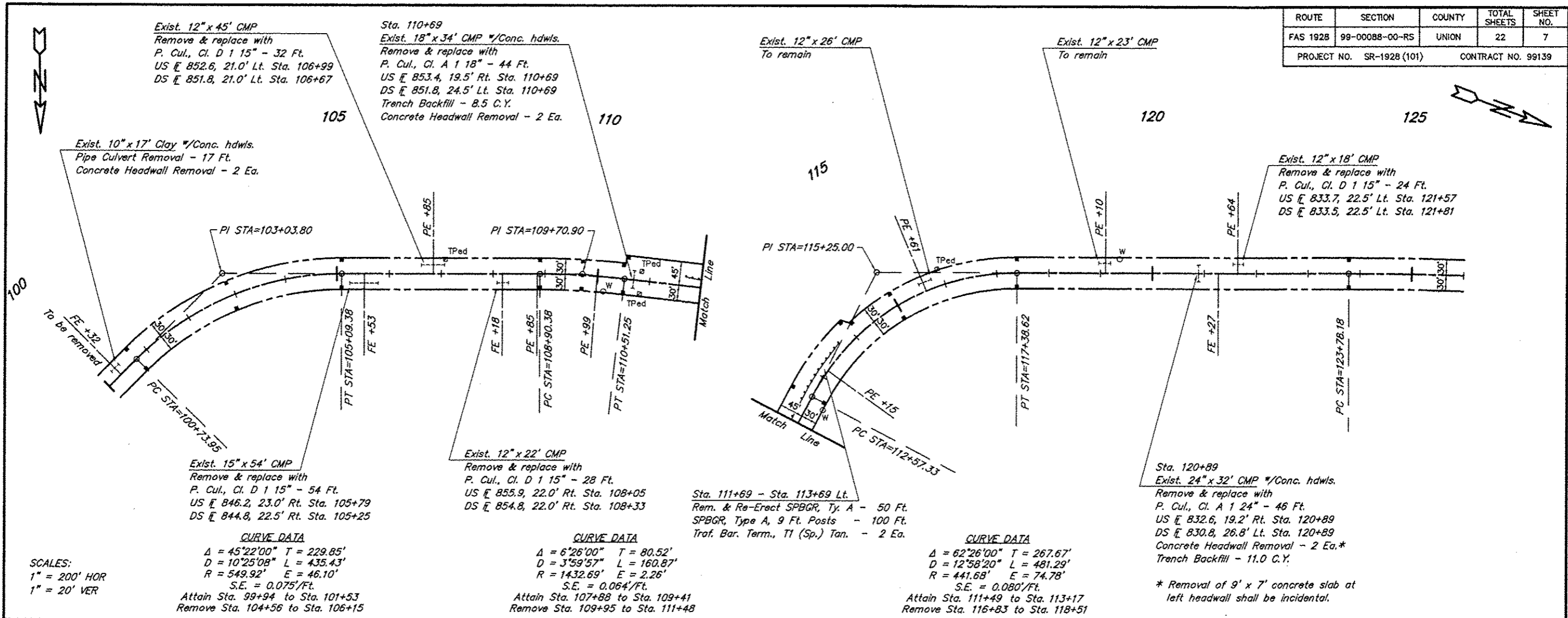


SCALES:
1" = 200' HOR
1" = 20' VER

544c P903 04/04/14 0907 RLM



ROUTE	SECTION	COUNTY	TOTAL SHEETS	SHEET NO.
FAS 1928	99-00088-00-RS	UNION	22	7
PROJECT NO. SR-1928(101)			CONTRACT NO. 99159	



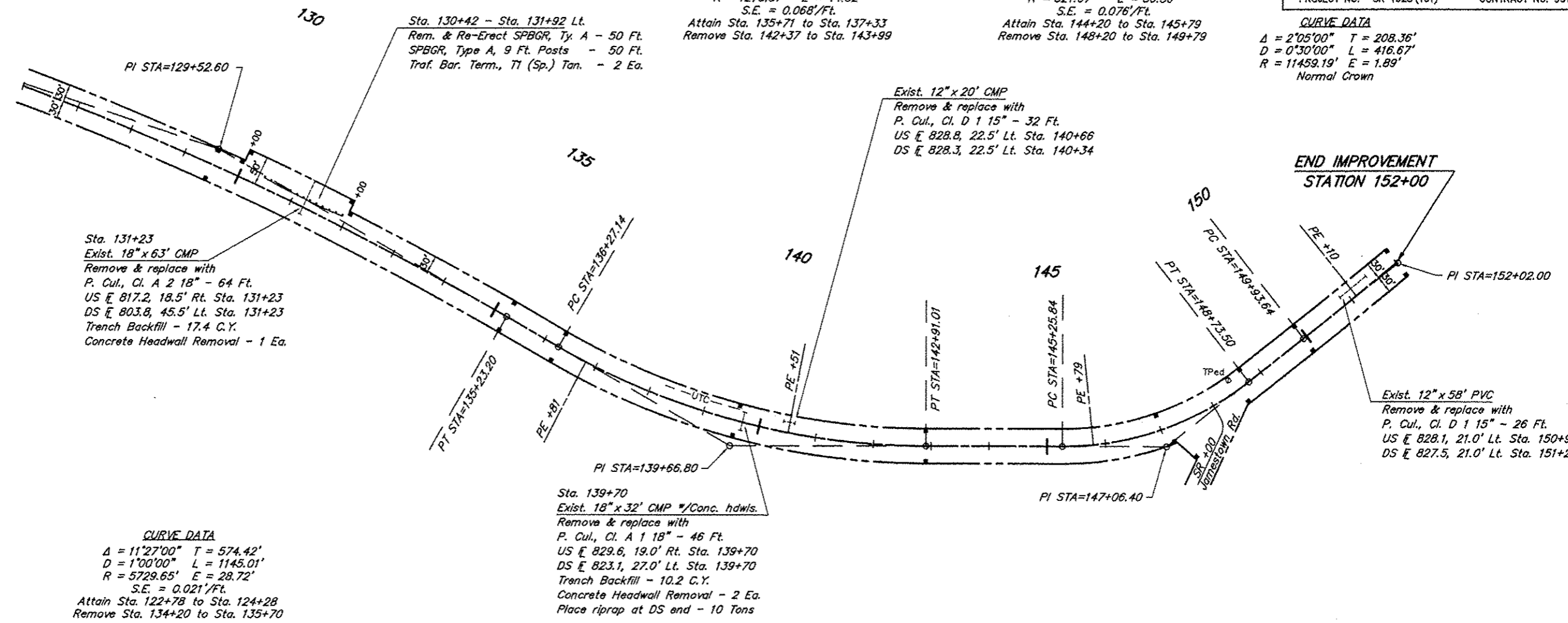
5446 PPO4 04/04/14 0906 RLM

ROUTE	SECTION	COUNTY	TOTAL SHEETS	SHEET NO.
FAS 1928	99-00088-00-RS	UNION	22	8
PROJECT NO. SR-1928 (101)			CONTRACT NO. 99139	

CURVE DATA
 $\Delta = 29^{\circ}52'00''$ $T = 339.66'$
 $D = 4^{\circ}29'56''$ $L = 663.87'$
 $R = 1273.57'$ $E = 44.52'$
 $S.E. = 0.068'/Ft.$
 Attain Sta. 135+71 to Sta. 137+33
 Remove Sta. 142+37 to Sta. 143+99

CURVE DATA
 $\Delta = 38^{\circ}11'00''$ $T = 180.56'$
 $D = 10^{\circ}58'59''$ $L = 347.65'$
 $R = 521.67'$ $E = 30.36'$
 $S.E. = 0.076'/Ft.$
 Attain Sta. 144+20 to Sta. 145+79
 Remove Sta. 148+20 to Sta. 149+79

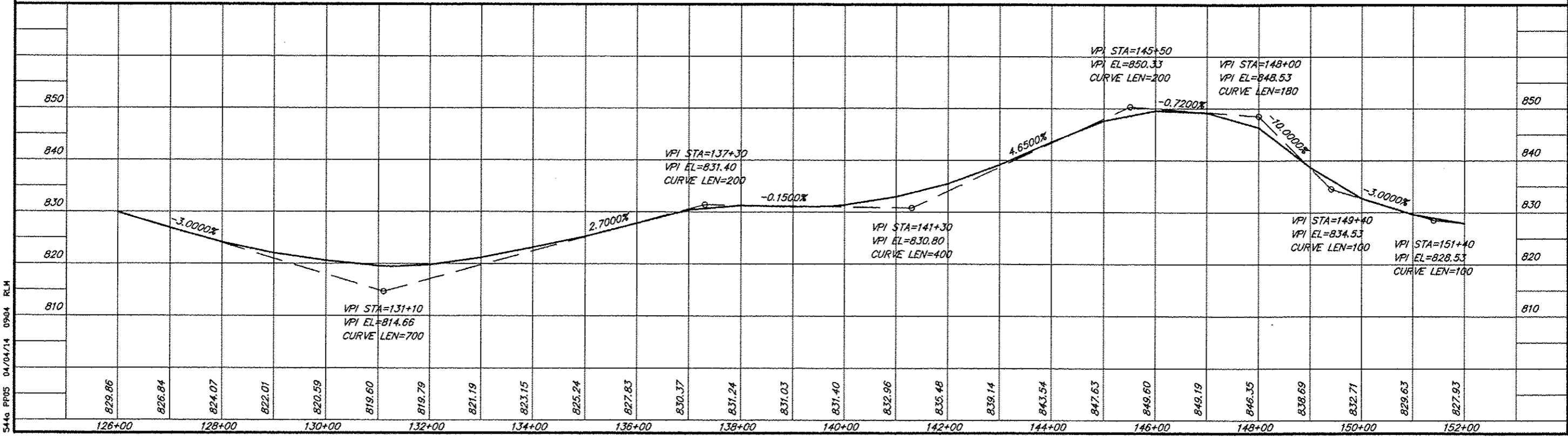
CURVE DATA
 $\Delta = 2^{\circ}05'00''$ $T = 208.36'$
 $D = 0^{\circ}30'00''$ $L = 416.67'$
 $R = 11459.19'$ $E = 1.89'$
 Normal Crown



SCALES:
 1" = 200' HOR
 1" = 20' VER

CURVE DATA
 $\Delta = 11^{\circ}27'00''$ $T = 574.42'$
 $D = 1^{\circ}00'00''$ $L = 1145.01'$
 $R = 5729.65'$ $E = 28.72'$
 $S.E. = 0.021'/Ft.$
 Attain Sta. 122+78 to Sta. 124+28
 Remove Sta. 134+20 to Sta. 135+70

CURVE DATA
 $\Delta = 11^{\circ}27'00''$ $T = 574.42'$
 $D = 1^{\circ}00'00''$ $L = 1145.01'$
 $R = 5729.65'$ $E = 28.72'$
 $S.E. = 0.021'/Ft.$
 Attain Sta. 122+78 to Sta. 124+28
 Remove Sta. 134+20 to Sta. 135+70

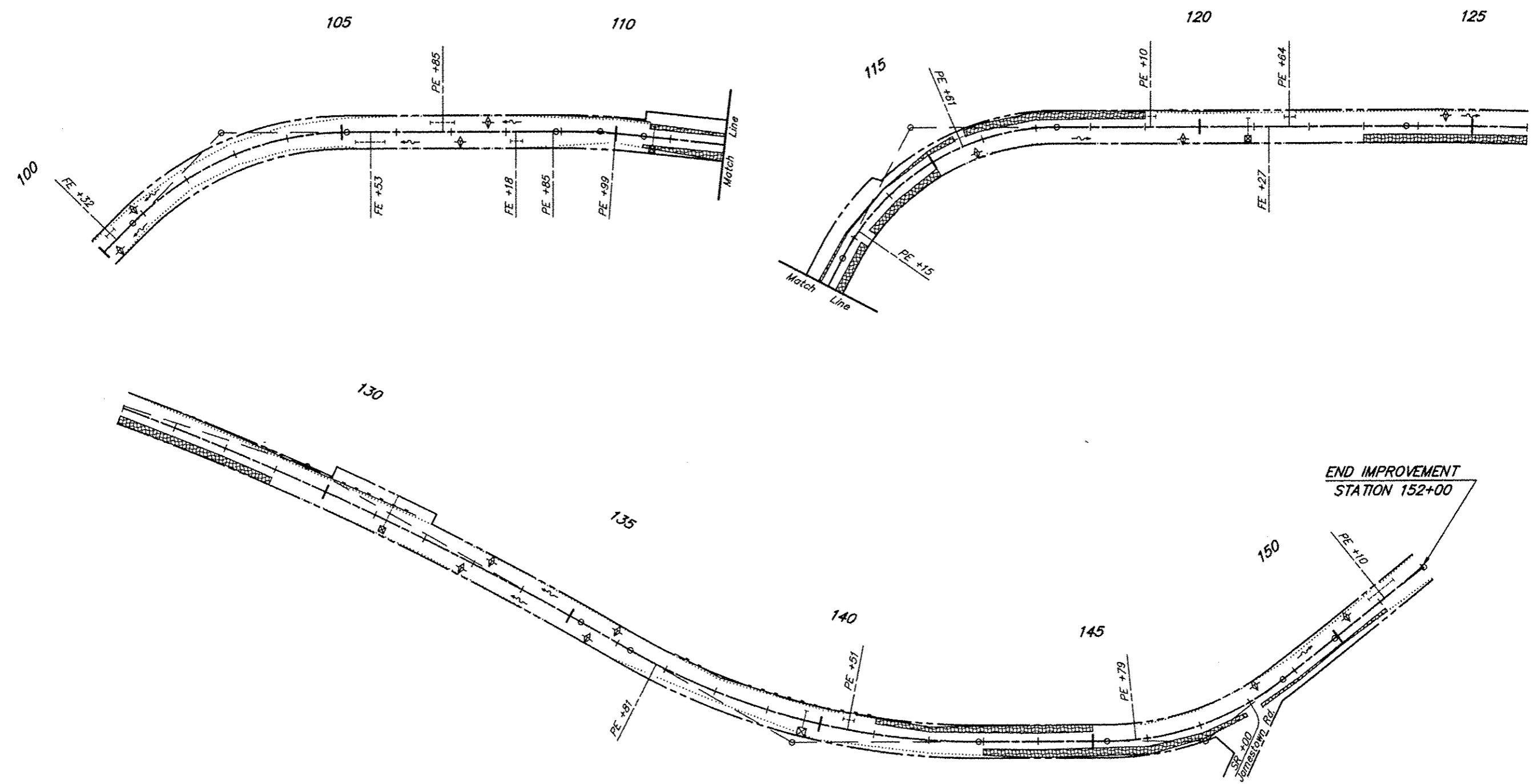


544g PPO5 04/04/14 0904 RLM

ROUTE	SECTION	COUNTY	TOTAL SHEETS	SHEET NO.
FAS 1928	99-00088-00-RS	UNION	22	10
PROJECT NO. SR-1928 (101)			CONTRACT NO. 99139	

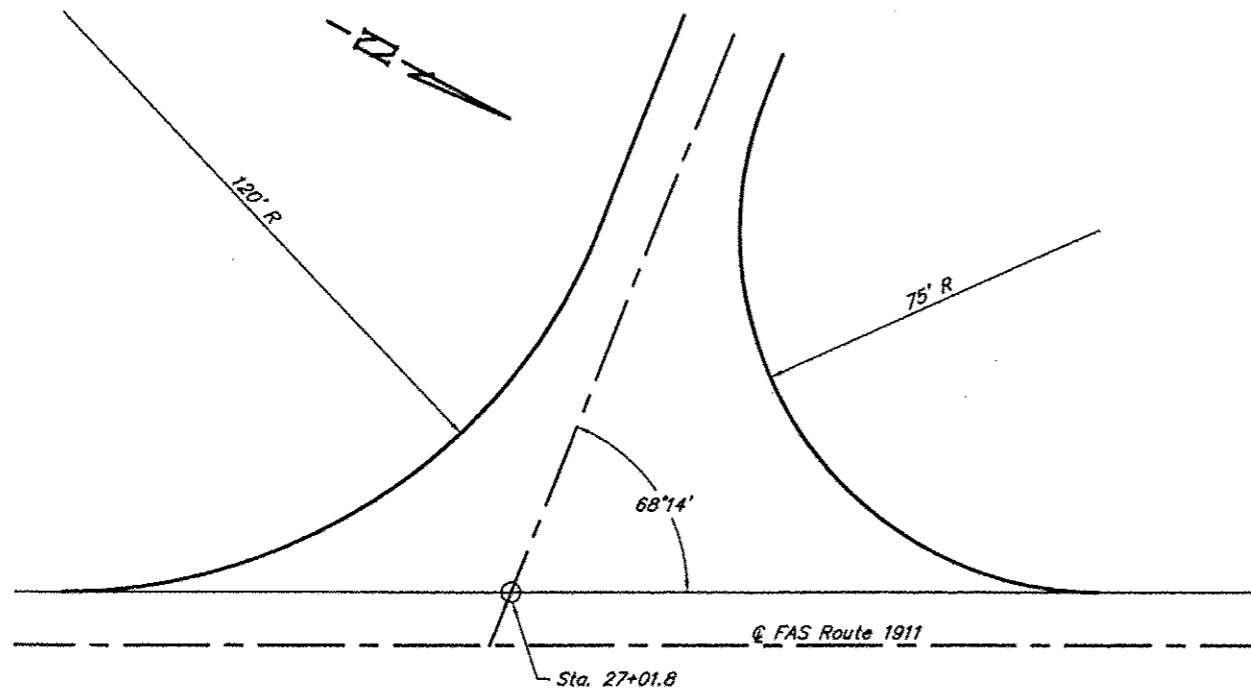
SCALE:
1" = 200' HOR

LEGEND	
Clearing & Grading Limits	-----
Perimeter Erosion Barrier	-----
Temporary Ditch Check	◆
Flow Indicator	~
Erosion Control Blanket	▨
Inlet & Pipe Protection	⊠

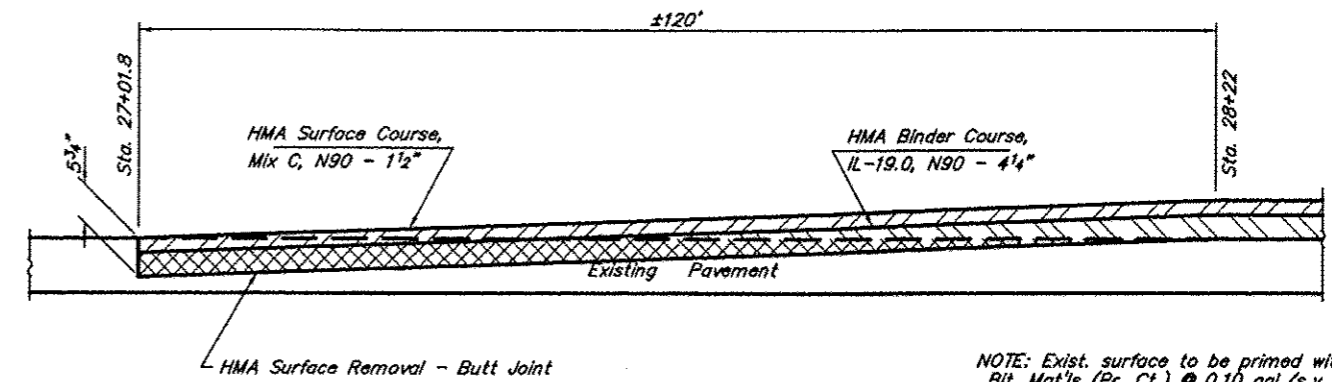


EROSION CONTROL PLAN
FAS ROUTE 1928
SECTION 99-00088-00-RS
PROJECT NO. SR-1928 (101)
UNION COUNTY

ROUTE	SECTION	COUNTY	TOTAL SHEETS	SHEET NO.
FAS 1928	99-00088-00-RS	UNION	22	11
PROJECT NO. SR-1928 (101)			CONTRACT NO. 99139	

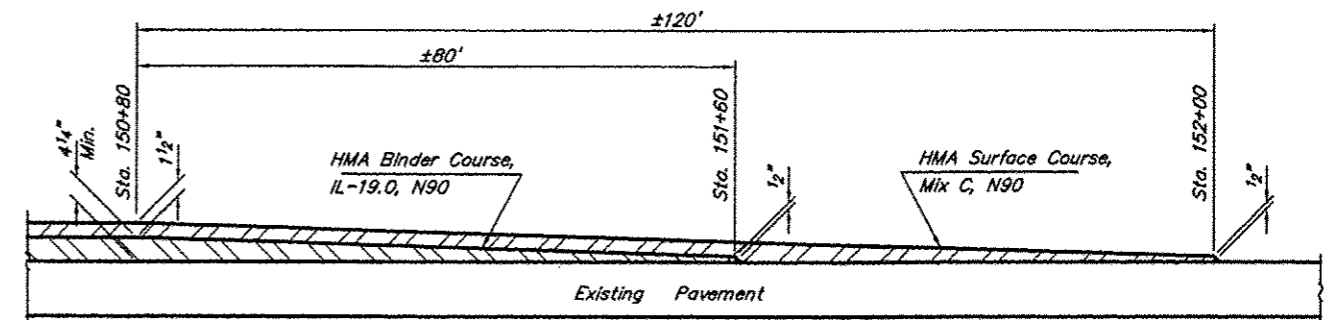


INTERSECTION DETAILS - FAS 1928 AND FAS 1911



NOTE: Exist. surface to be primed with Bit. Mat's (Pr. Ct.) @ 0.10 gal./s.y. & Aggregate (Pr. Ct.) @ 3 lbs./s.y.

BEGINNING BUTT JOINT



NOTE: Exist. surface to be primed with Bit. Mat's (Pr. Ct.) @ 0.10 gal./s.y. & Aggregate (Pr. Ct.) @ 3 lbs./s.y.

ENDING TAPER

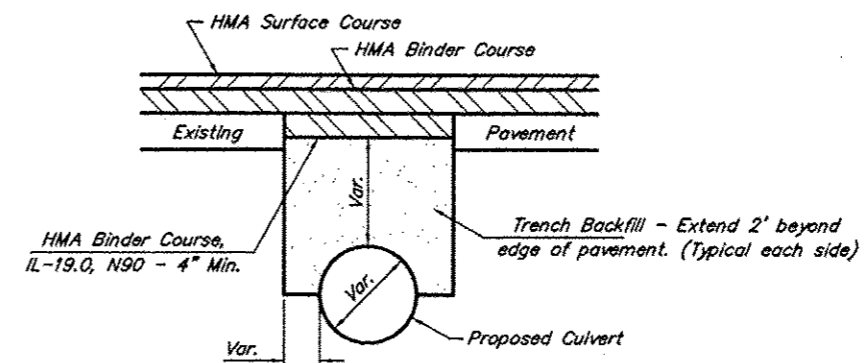
Location	Centerline (Yellow Dashed)	Edge Line (White Solid)	No Passing (Yellow Solid)
Sta. 27+01.8 to Sta. 152+00	1,370	24,855	19,445

See Standard 780001 for typical pavement markings.

EASTBOUND (LEFT) LANE		WESTBOUND (RIGHT) LANE	
Location	Length	Location	Length
Sta. 27+25 to Sta. 35+25	800'	Sta. 39+50 to Sta. 48+00	850'
Sta. 47+50 to Sta. 58+00	850'	Sta. 53+30 to Sta. 122+15	6,895'
Sta. 62+30 to Sta. 131+00	6,880'	Sta. 131+00 to Sta. 146+85	1,585'
Sta. 140+00 to Sta. 155+85 ²	1,585'		
TOTALS	10,115'		9,330'

¹ Denotes location of "No Passing Zone" signs to be erected in accordance with Sign Schedule & Mounting Detail.

² Existing no-passing zone extends beyond project limits.



**ACROSS ROAD CULVERT
INSTALLATION DETAIL**

NOTE: See plans for locations, culvert sizes & quantities.

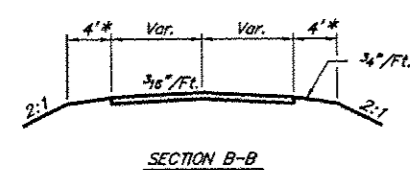
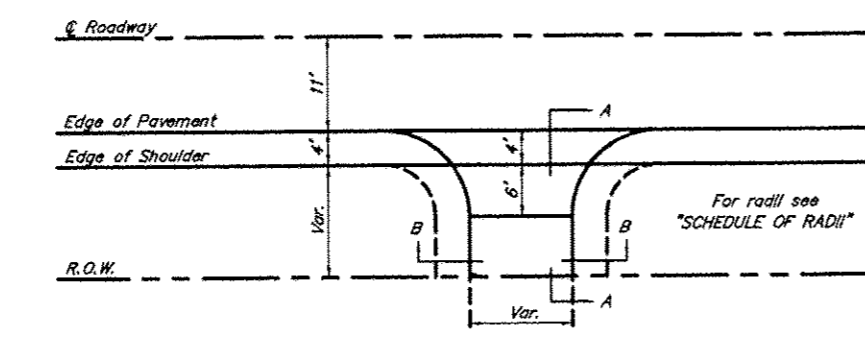
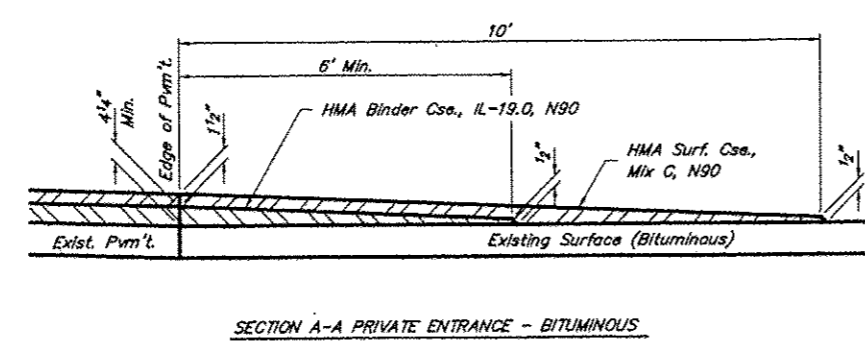
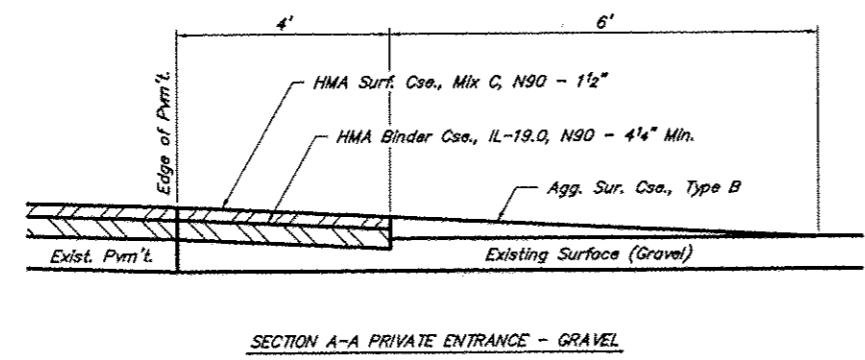
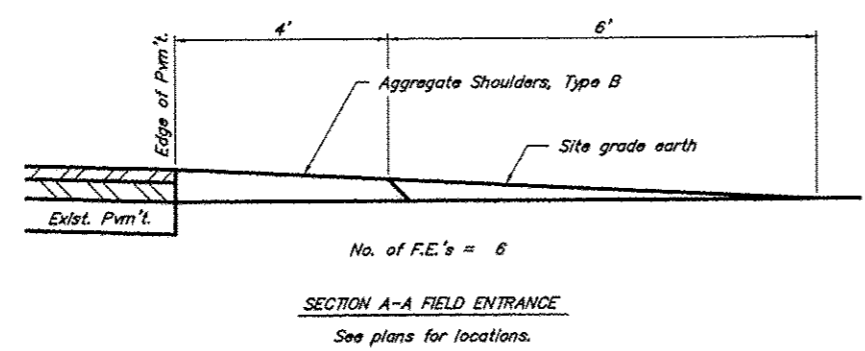
**MISCELLANEOUS DETAILS
FAS ROUTE 1928
SECTION 99-00088-00-RS
PROJECT NO. SR-1928 (101)
UNION COUNTY**

ROUTE	SECTION	COUNTY	TOTAL SHEETS	SHEET NO.
FAS 1928	99-00088-00-RS	UNION	22	12
PROJECT NO. SR-1928 (101)			CONTRACT NO. 99139	

Location	Width	Binder Tons	Surface Tons	Agg. Tons
Sta. 28+34 Lt. G	10'	3.0	1.0	1.9
Sta. 28+89 Rt. G	12'	7.5	1.1	4.3
Sta. 29+25 Lt. G	10'	3.0	1.0	1.9
Sta. 35+69 Lt. G	13'	5.6	1.1	3.4
Sta. 37+59 Rt. B	30'	6.5	3.5	-
Sta. 38+56 Rt. B	16'	3.7	2.2	-
Sta. 42+12 Rt. G	24'	4.6	1.5	3.5
Sta. 42+39 Lt. B	12'	4.5	1.9	-
Sta. 45+08 Lt. G	10'	6.3	1.0	3.5
Sta. 57+31 Rt. G	16'	8.6	1.2	5.2
Sta. 57+54 Lt. G	15'	3.6	1.2	2.5
Sta. 58+11 Lt. G	22'	4.3	1.5	3.3
Sta. 61+32 Lt. G	10'	4.3	1.0	2.5
Sta. 62+16 Lt. G	12'	4.6	1.1	2.8
Sta. 62+97 Lt. G	10'	3.7	1.0	2.2
Sta. 63+69 Lt. G	16'	4.1	1.2	2.8
Sta. 65+93 Lt. G	13'	4.1	1.1	2.6
Sta. 66+37 Lt. B	12'	4.0	1.9	-
Sta. 67+40 Lt. B	20'	10.6	2.7	-
Sta. 67+70 Rt. B	12'	3.2	1.9	-
Sta. 68+06 Lt. B	10'	8.4	1.8	-
Sta. 68+73 Rt. G	10'	3.0	1.0	1.9
Sta. 75+42 Lt. G	12'	3.9	1.1	2.5
Sta. 75+98 Lt. B	12'	3.6	1.9	-
Sta. 77+39 Lt. B	12'	4.0	1.9	-
Sta. 78+64 Lt. G	10'	5.3	1.0	3.0
Sta. 79+80 Lt. B	12'	4.9	1.9	-
Sta. 82+17 Rt. B	12'	9.0	2.0	-
Sta. 82+85 Rt. G	12'	8.2	1.1	4.6
Sta. 85+16 Lt. G	12'	3.6	1.1	2.3
Sta. 87+07 Rt. G	14'	8.8	1.2	5.1
Sta. 89+10 Rt. G	12'	5.7	1.1	3.4
Sta. 92+54 Rt. G	12'	4.6	1.1	2.8
Sta. 95+16 Rt. G	14'	4.2	1.2	2.8
Sta. 96+65 Rt. G	12'	3.2	1.1	2.1
Sta. 99+62 Lt. G	14'	8.8	1.2	5.1
Sta. 106+85 Lt. G	14'	3.4	1.2	2.4
Sta. 108+85 Rt. G	12'	6.4	1.1	3.7
Sta. 109+99 Rt. G	12'	3.2	1.1	2.1
Sta. 113+15 Rt. B	12'	7.3	2.0	-
Sta. 115+61 Lt. G	13'	3.4	1.1	2.2
Sta. 119+10 Lt. G	14'	3.4	1.2	2.4
Sta. 121+64 Lt. G	12'	5.0	1.1	3.0
Sta. 136+81 Rt. G	12'	3.2	1.1	2.1
Sta. 140+51 Lt. G	10'	4.3	1.0	2.5
Sta. 145+79 Lt. G	12'	5.0	1.1	3.0
Sta. 151+10 Lt. G	12'	6.1	1.1	3.6
Totals		239.7	64.9	105.0

B = Bituminous Surface
G = Gravel Surface

NOTE: Where HMA material is to be placed, the existing surface shall be primed with Bituminous Mat's (Pr. Ct.) at 0.10 gal./s.y. and Aggregate (Pr. Ct.) at 3 lbs./s.y.

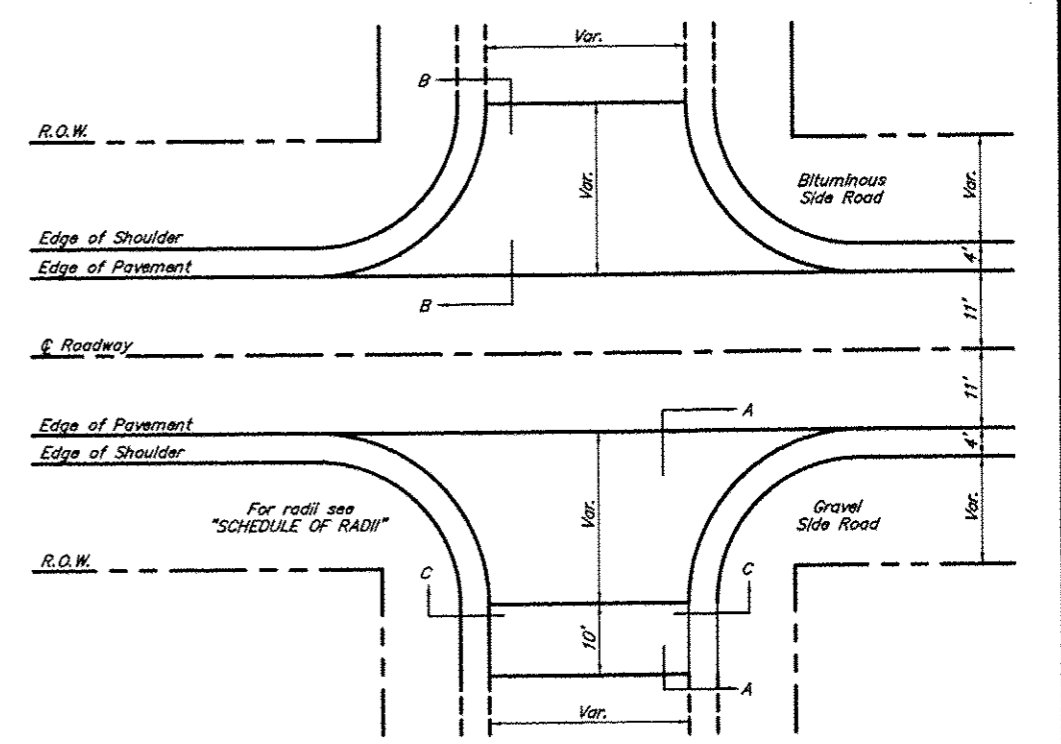
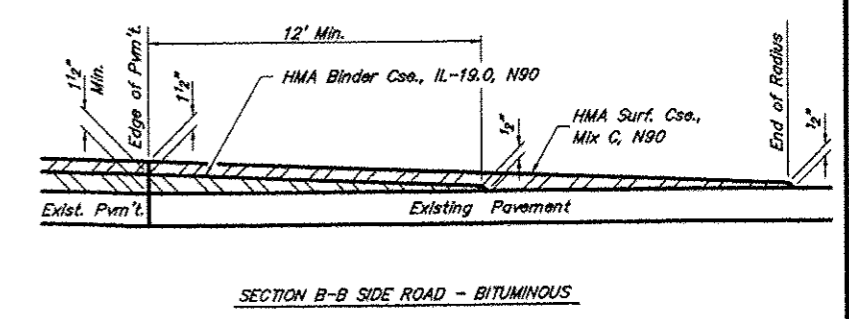
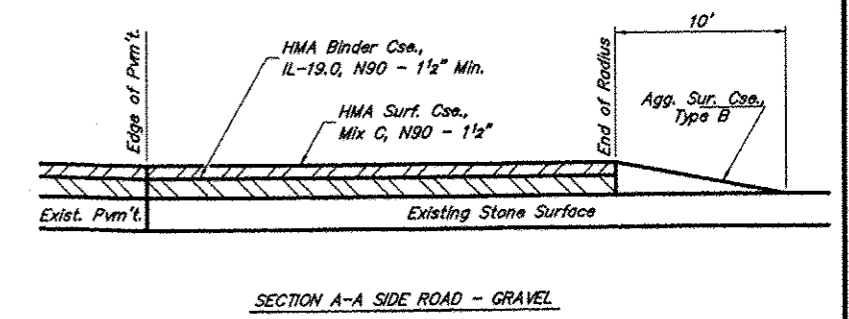
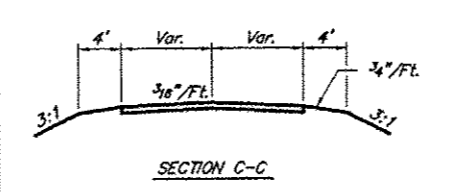


* Reconstruct entrance with 4' shoulders when new ditch culvert is constructed.

Location	Width	Binder Tons	Surface Tons	Agg. Tons
Sta. 56+86 Lt. G	20'	24.6	7.4	2.5
Sta. 147+00 Rt. B	24'	25.8	7.9	-
Totals		50.4	15.3	2.5

B = Bituminous Surface
G = Gravel Surface

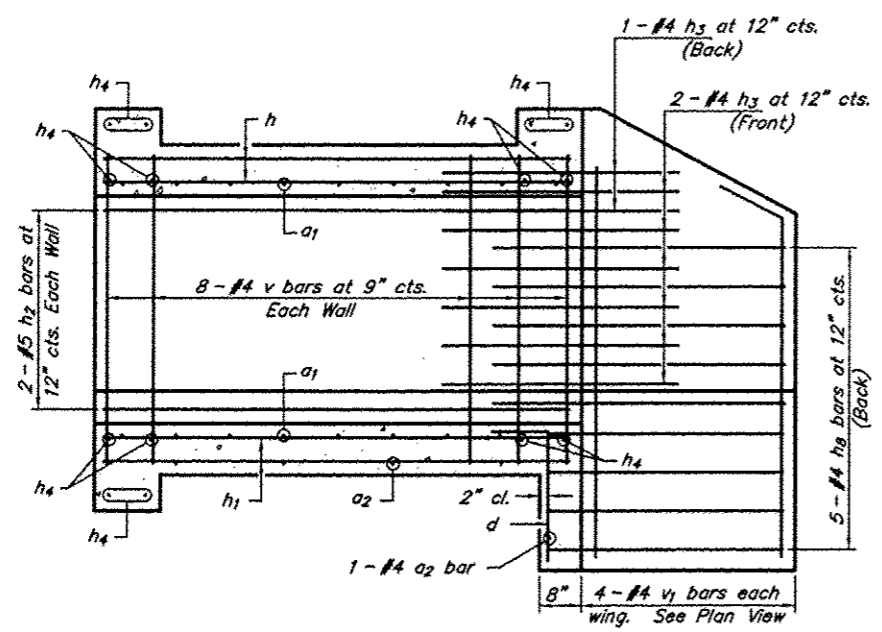
NOTE: Where HMA material is to be placed, the existing surface shall be primed with Bituminous Mat's (Pr. Ct.) at 0.10 gal./s.y. and Aggregate (Pr. Ct.) at 3 lbs./s.y.



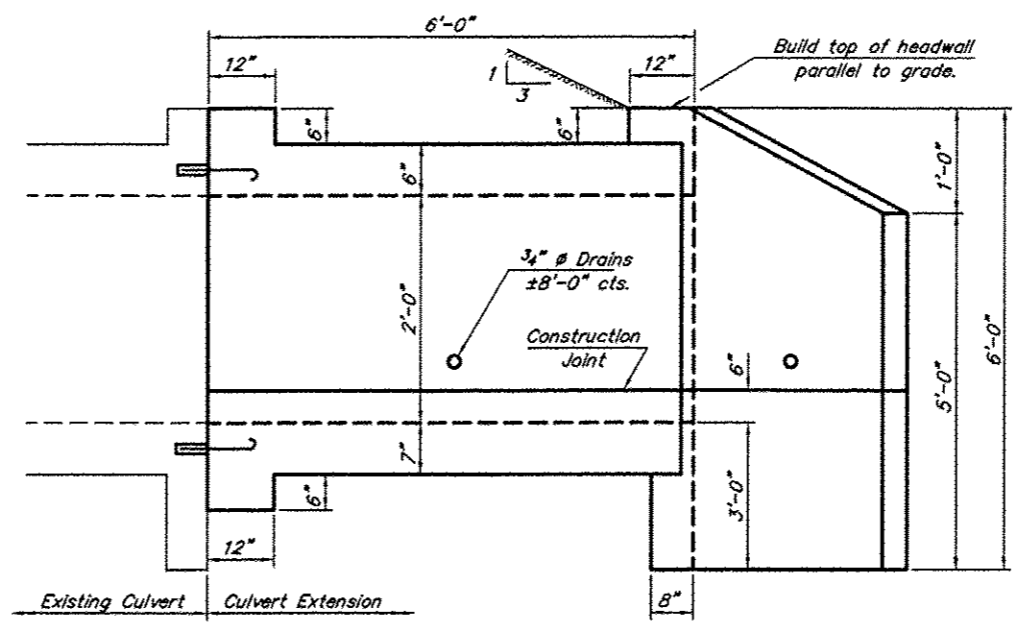
Angle of Intersection	Side Road		Private Entrance	
	Acute L.	Obtuse L.	Acute L.	Obtuse L.
90° - 80°	25'	25'	15'	15'
79° - 70°	25'	40'	15'	25'
69° - 60°	25'	60'	15'	35'
59° - 50°	20'	75'	10'	40'
49° - 40°	20'	100'	10'	60'
39° - 30°	15'	150'	10'	100'

ENTRANCE & SIDE ROAD DETAILS
FAS ROUTE 1928
SECTION 99-00088-00-RS
PROJECT NO. SR-1928 (101)
UNION COUNTY

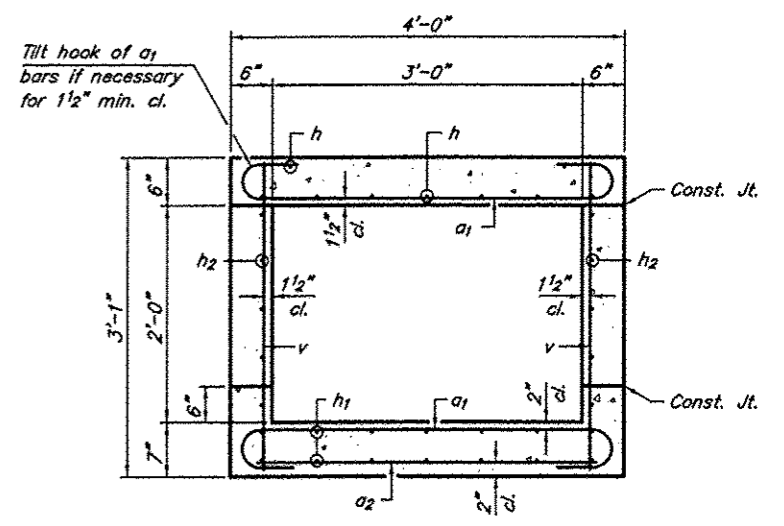
ROUTE	SECTION	COUNTY	TOTAL SHEETS	SHEET NO.
FAS 1928	99-00088-00-RS	UNION	22	13
PROJECT NO. SR-1928 (101)			CONTRACT NO. 99139	



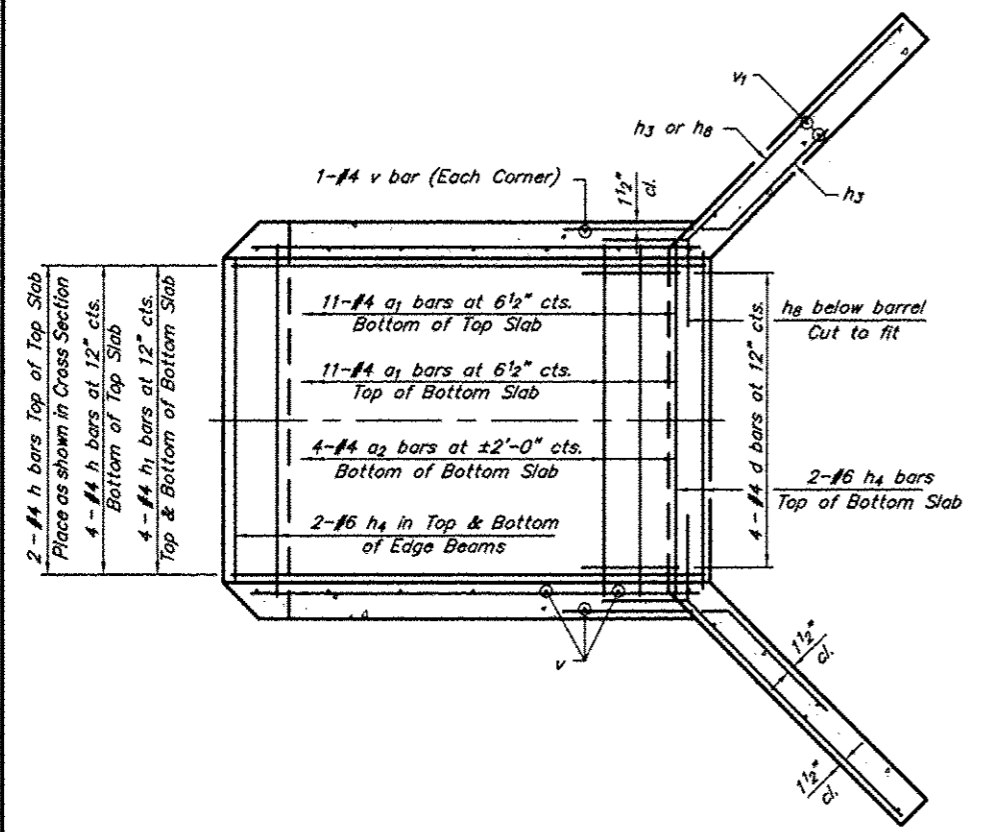
SHOWING REINFORCEMENT



SHOWING OUTLINE

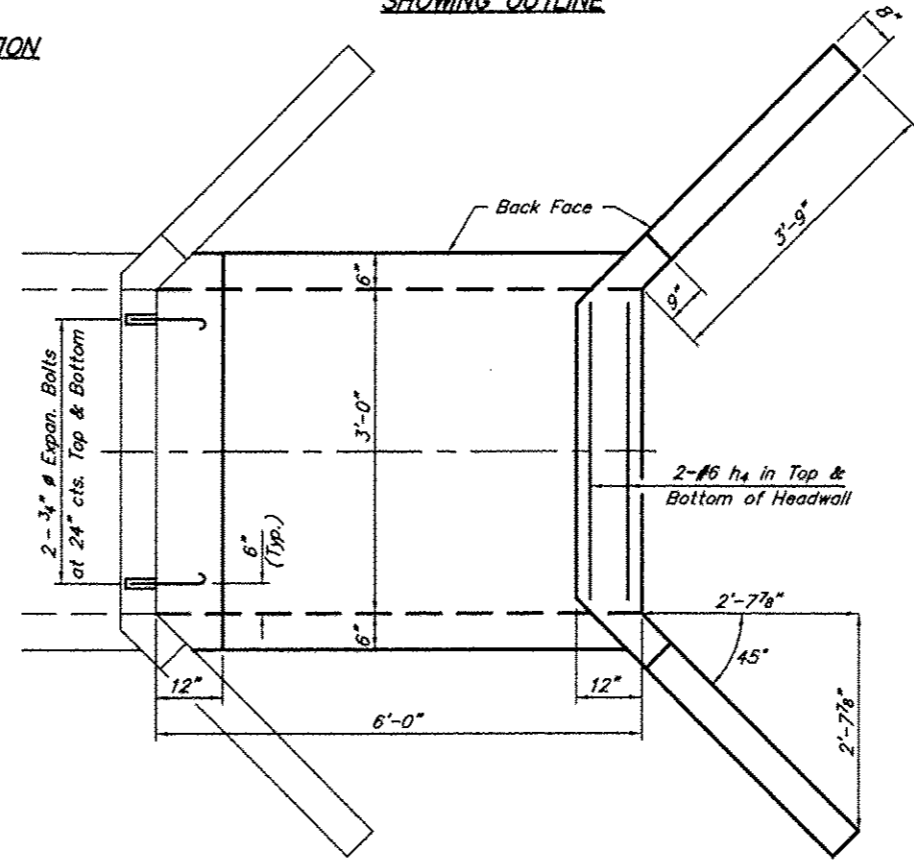


SECTION THRU BARREL



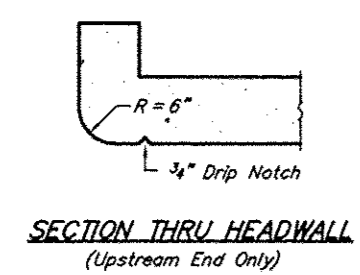
SHOWING REINFORCEMENT

ELEVATION

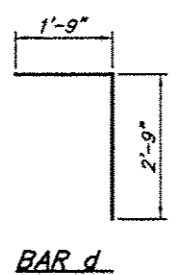


SHOWING OUTLINE

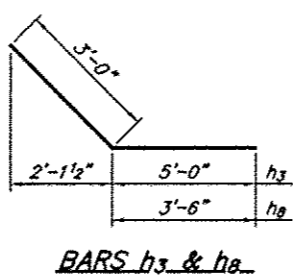
PLAN



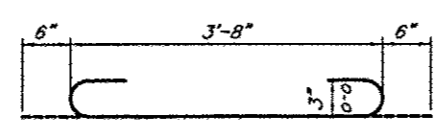
SECTION THRU HEADWALL (Upstream End Only)



BAR d



BARs h3 & h4



BAR a1

NOTES

Barrel shall be poured monolithically with wingwalls. Exposed edges shall be beveled $\frac{3}{4}$ ". Reinforcement bars shall conform to the requirements of AASHTO M-31, M-42 or M-53, Grade 60. Expansion bolts shall consist of self drilling expansion shields and $\frac{3}{4}$ " hooked bolts. Bolts shall extend a minimum of 9" into new concrete.

DESIGN STRESSES

$f_y = 60,000$ psi
 $f'_c = 3,500$ psi

LOADING HS 20-44 & ALT.

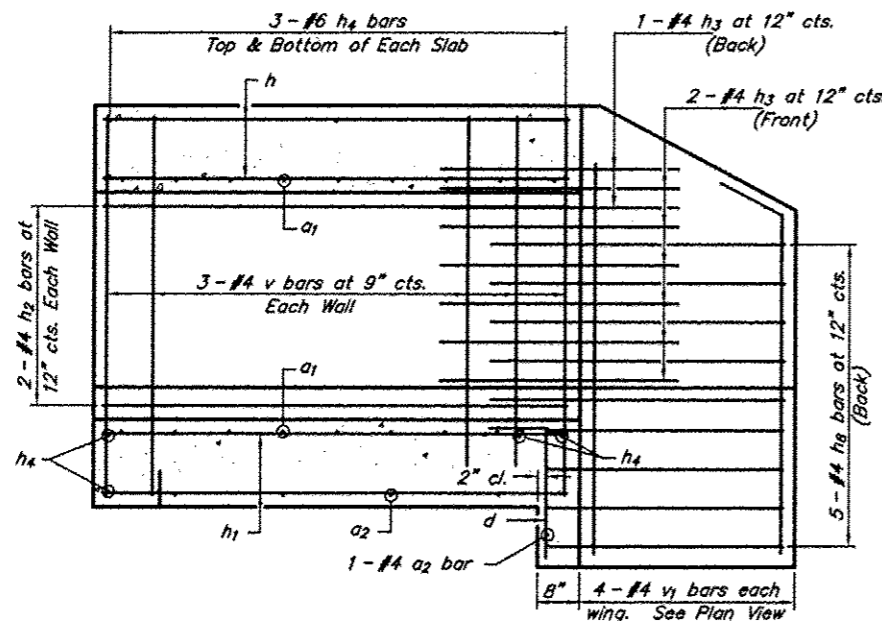
BILL OF MATERIAL (One Extension)

Bar	No.	Size	Length
a1	22	#4	4'-8"
a2	5	#4	3'-8"
d	4	#4	4'-6"
h	6	#4	5'-8"
h1	8	#4	5'-8"
h2	4	#5	5'-8"
h3	6	#4	8'-0"
h4	14	#6	3'-6"
h4	10	#4	6'-6"
v	18	#4	2'-9"
v1	8	#4	5'-3"
Conc. Box Culverts			Cu. Yds. 2.4
Reinforcement Bars			Lbs. 380
Expansion Bolts			Each 4

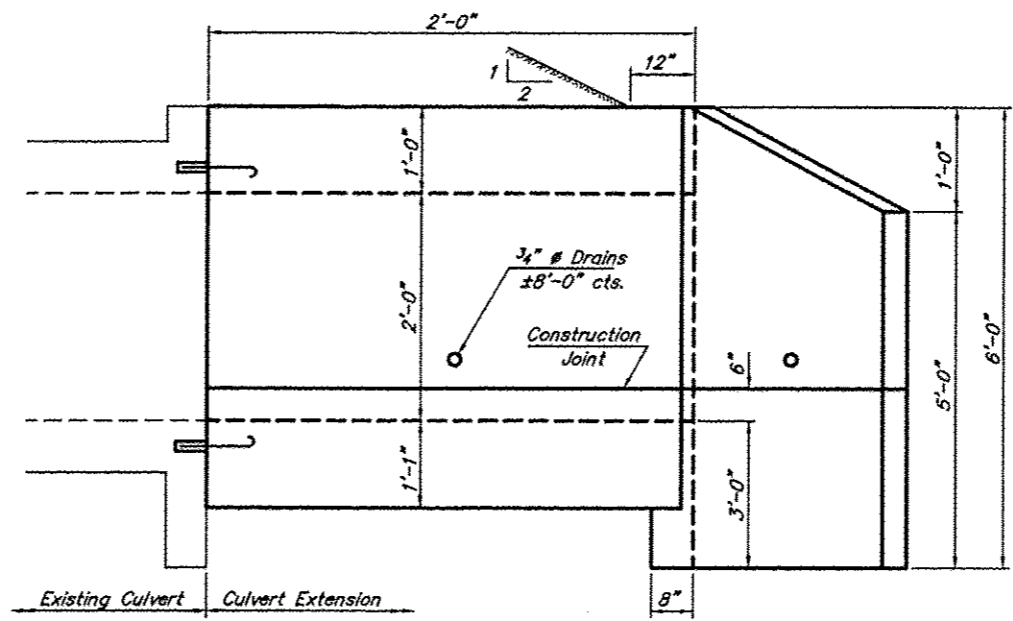
BOX CULVERT EXTENSION
STATION 78+38 LT. & RT.
FAS ROUTE 1928
SECTION 99-00088-00-RS
PROJECT NO. SR-1928 (101)
UNION COUNTY

544a BCEI 04/04/14 05:30 RLM

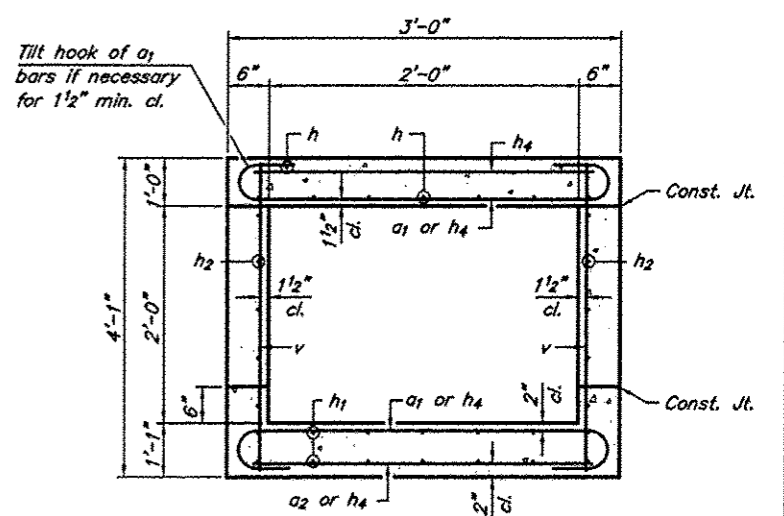
ROUTE	SECTION	COUNTY	TOTAL SHEETS	SHEET NO.
FAS 1928	99-00088-00-RS	UNION	22	14
PROJECT NO. SR-1928 (101)			CONTRACT NO. 99139	



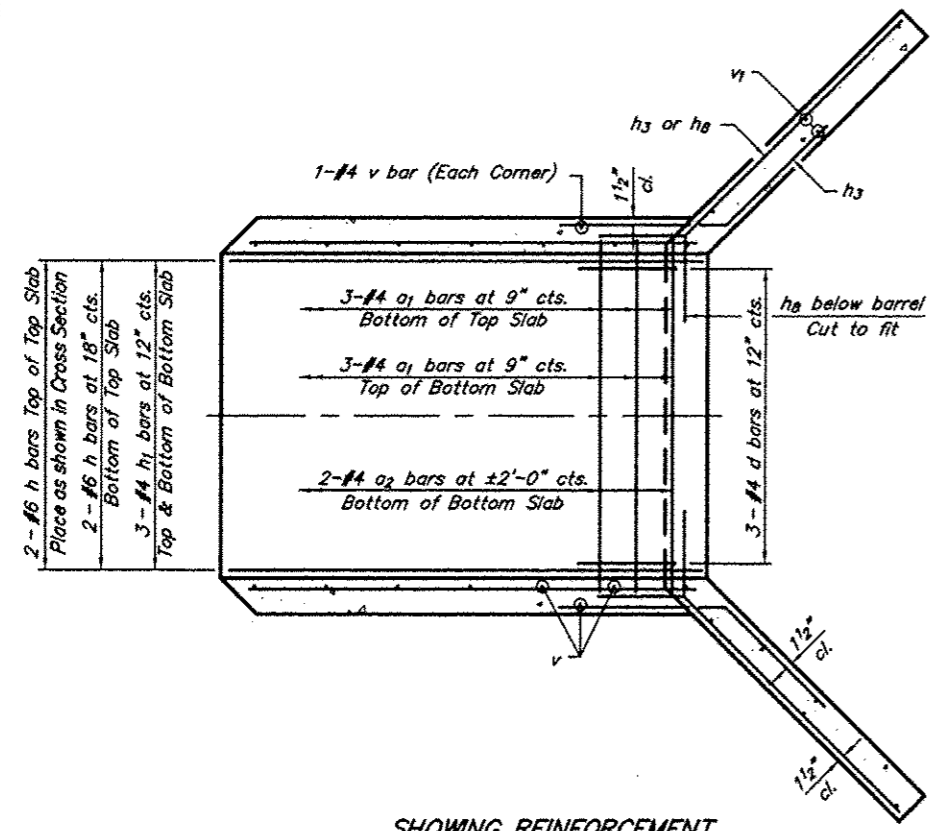
SHOWING REINFORCEMENT



SHOWING OUTLINE

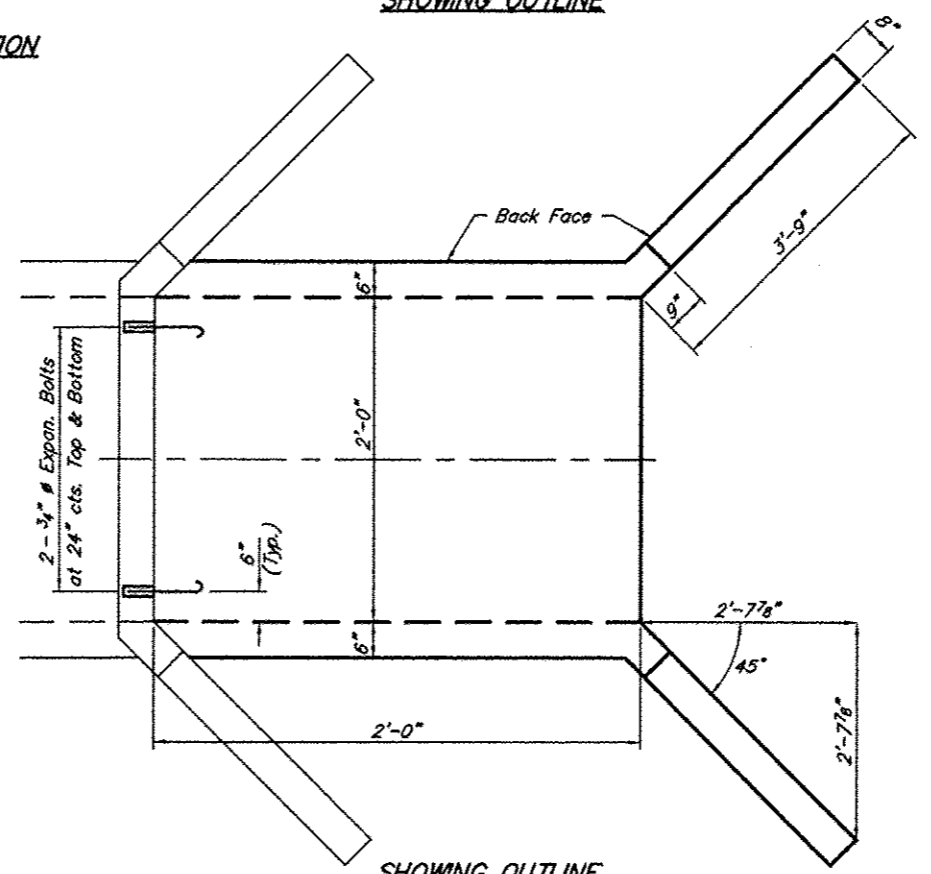


SECTION THRU BARREL



SHOWING REINFORCEMENT

ELEVATION



SHOWING OUTLINE

PLAN

BILL OF MATERIAL
(One Extension)

Bar	No.	Size	Length
a1	6	#4	5'-2"
a2	3	#4	2'-8"
d	3	#4	4'-6"
h	4	#6	1'-8"
h1	6	#4	1'-8"
h2	4	#5	1'-8"
h3	6	#4	3'-9"
h4	12	#6	2'-6"
h8	10	#4	5'-6"
v	8	#4	3'-9"
v1	8	#4	5'-3"
Conc. Box Culverts			Cu. Yds. 1.1
Reinforcement Bars			Lbs. 210
Expansion Bolts			Each 4

NOTES

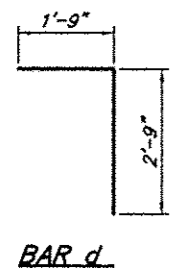
Barrel shall be poured monolithically with wingwalls.
Exposed edges shall be beveled 3/4".
Reinforcement bars shall conform to the requirements of AASHTO M-31, M-42 or M-53, Grade 60.
Expansion bolts shall consist of self drilling expansion shields and 3/4" # hooked bolts. Bolts shall extend a minimum of 9" into new concrete.

DESIGN STRESSES

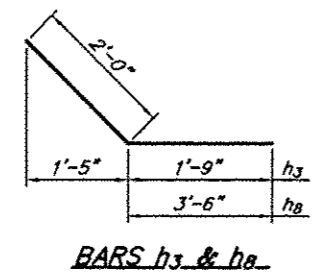
fy = 60,000 psi
fc = 3,500 psi

LOADING HS 20-44 & ALT.

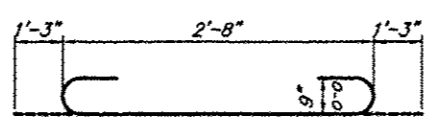
BOX CULVERT EXTENSION
STATION 89+83 RIGHT
FAS ROUTE 1928
SECTION 99-00088-00-RS
PROJECT NO. SR-1928 (101)
UNION COUNTY



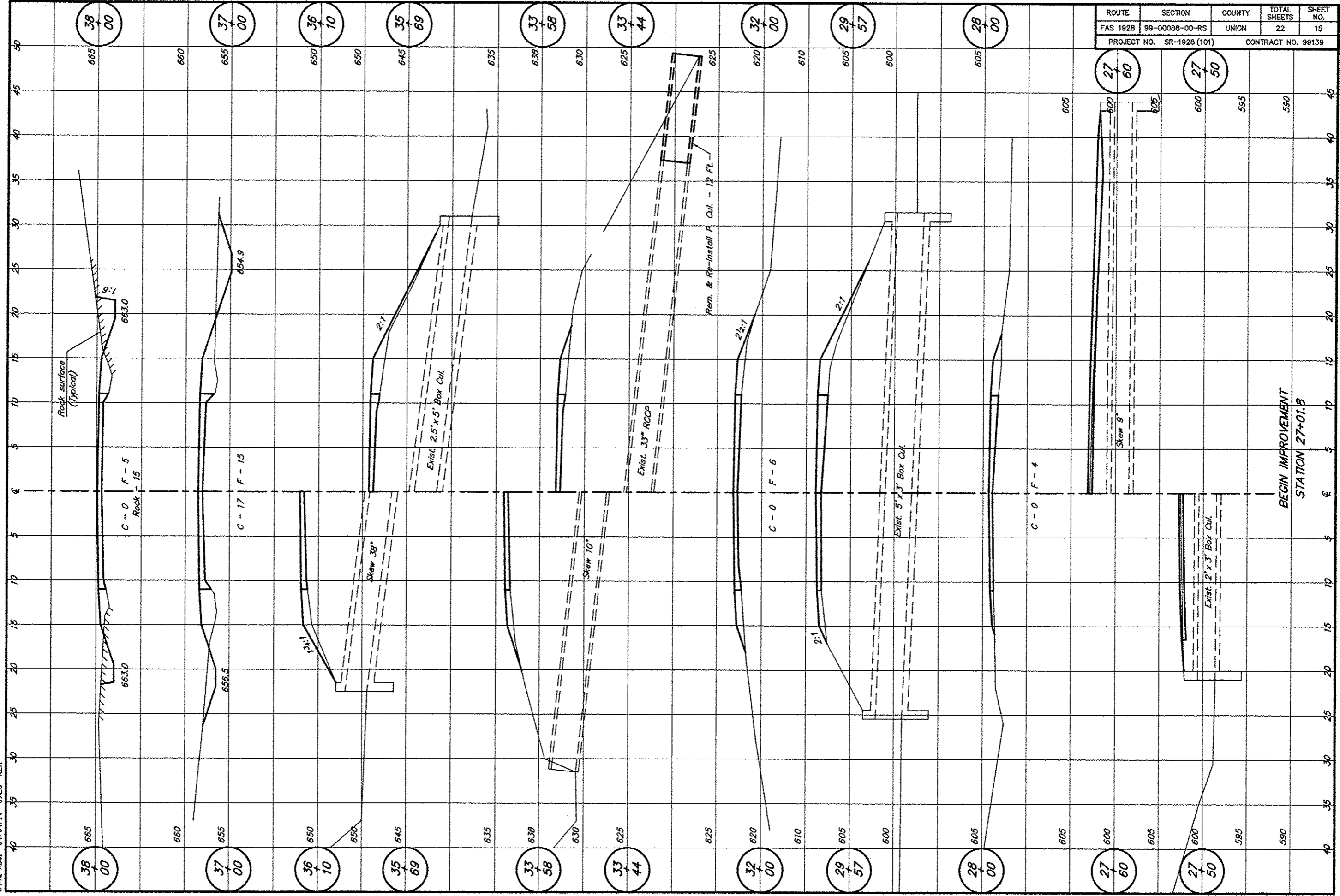
BAR d



BARS h3 & h8

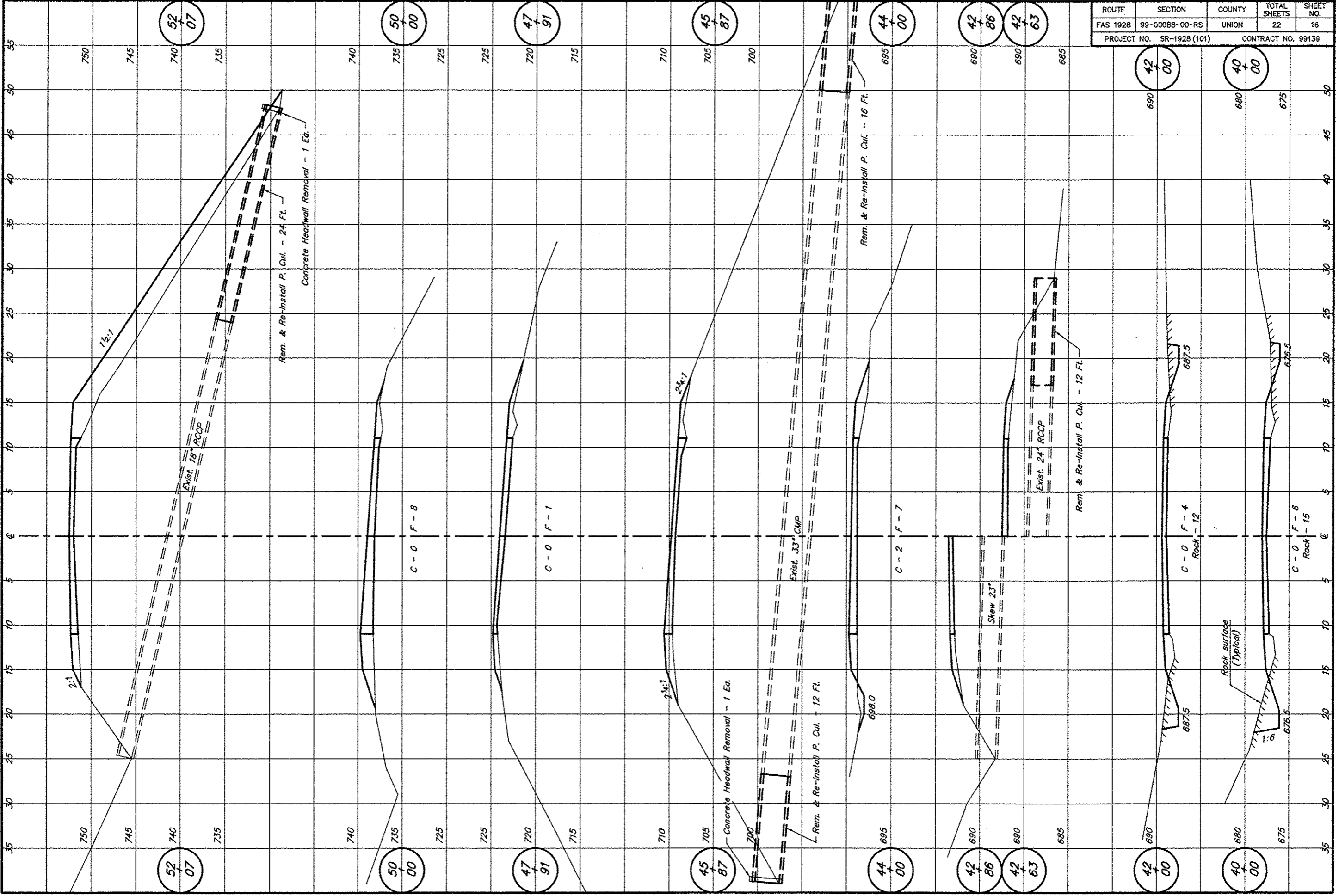


BAR a1



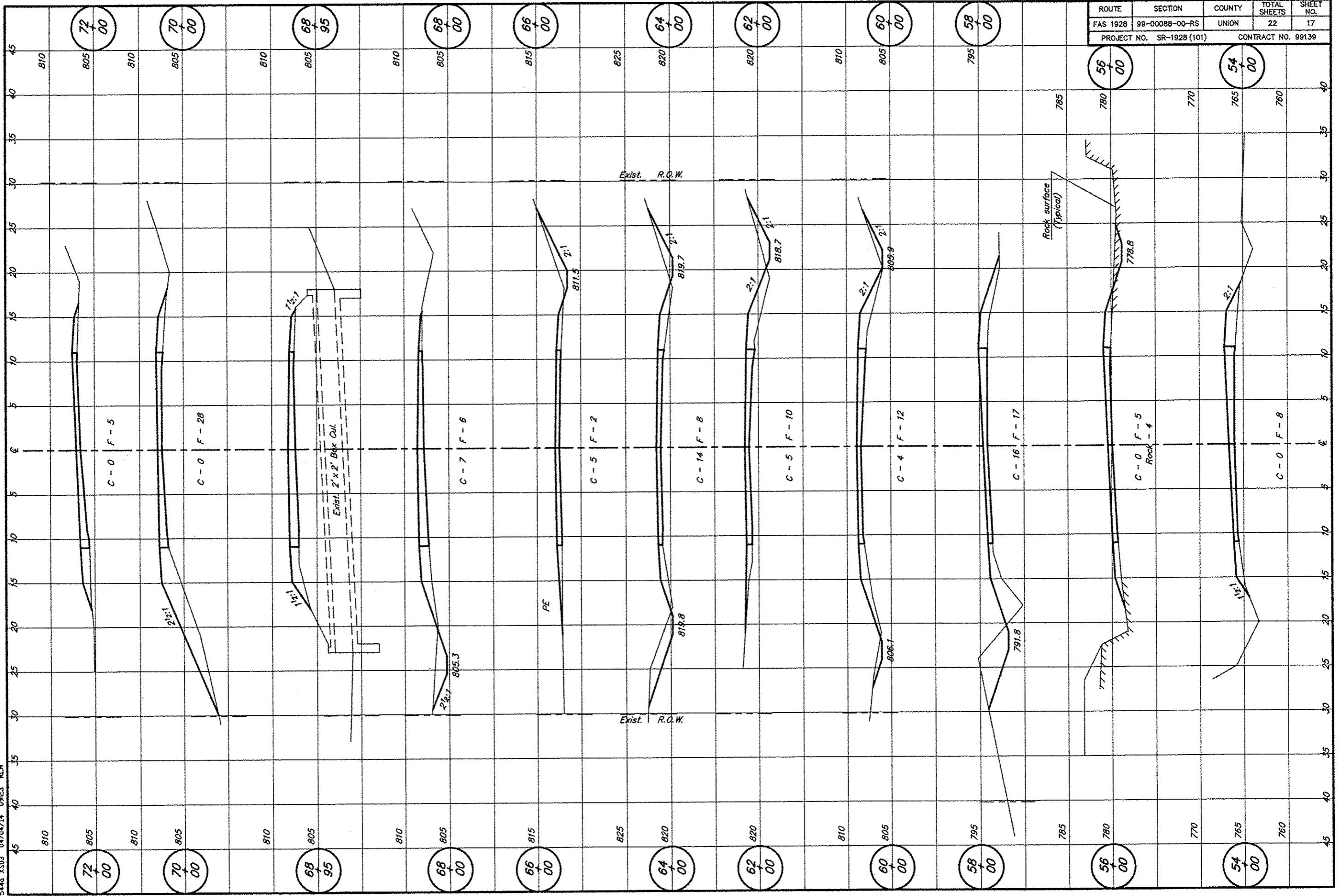
ROUTE	SECTION	COUNTY	TOTAL SHEETS	SHEET NO.
FAS 1928	99-00088-00-RS	UNION	22	15
PROJECT NO. SR-1928 (101)			CONTRACT NO. 99139	

BEGIN IMPROVEMENT
STATION 27+01.8



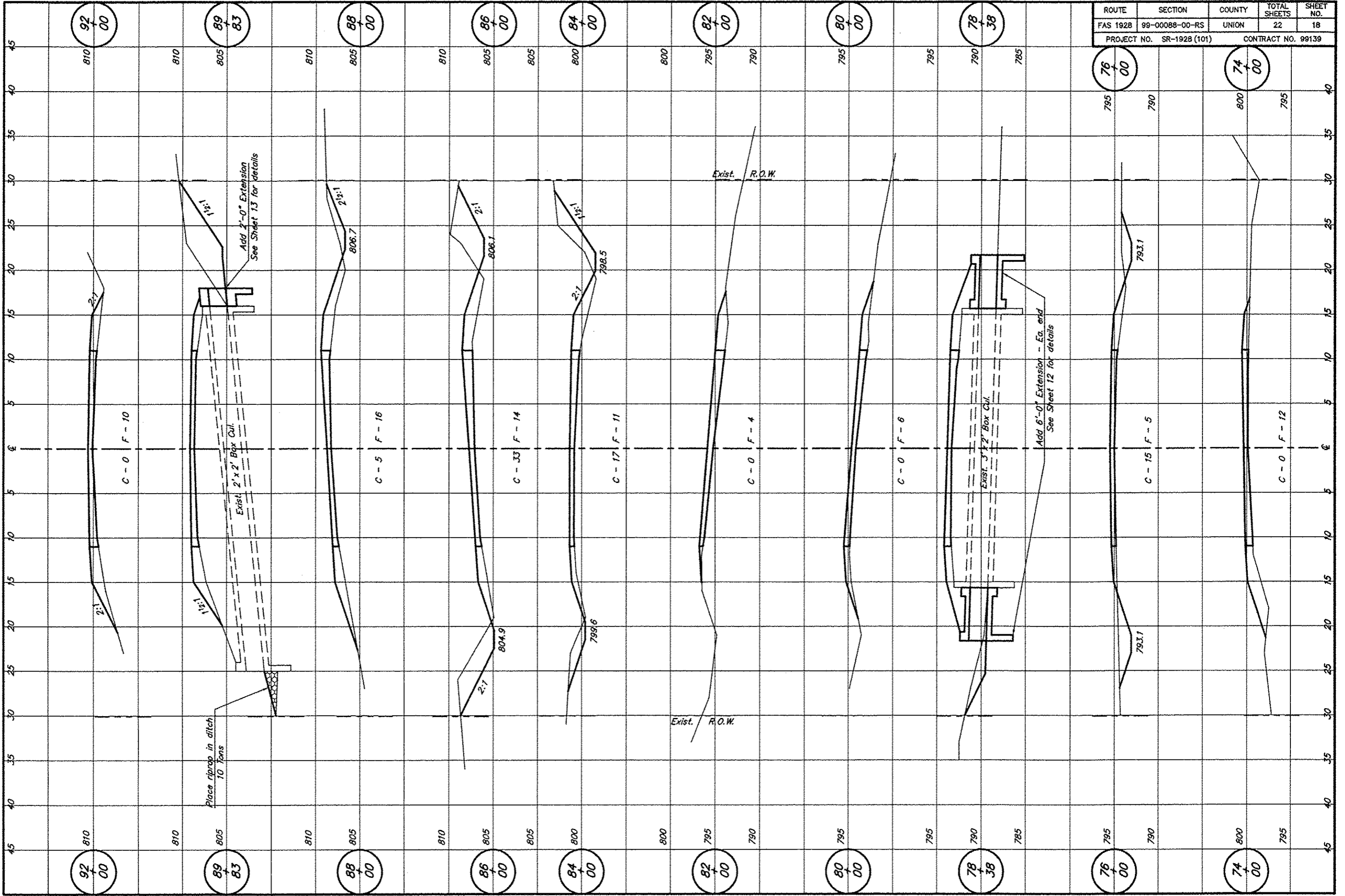
ROUTE	SECTION	COUNTY	TOTAL SHEETS	SHEET NO.
FAS 1928	99-00088-00-RS	UNION	22	16
PROJECT NO. SR-1928 (101)			CONTRACT NO. 99139	

S440 XS03 04/04/14 09:23 RLM

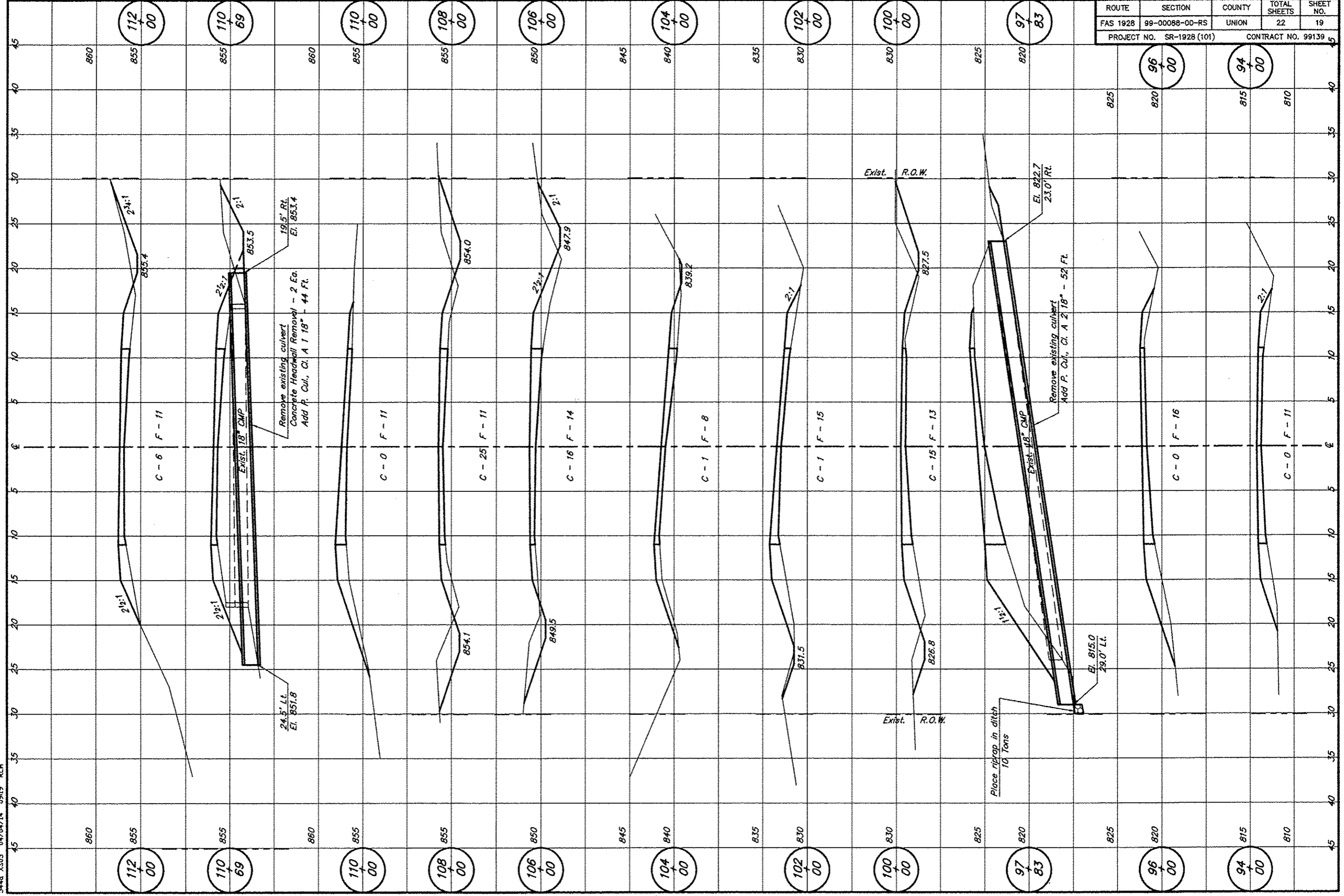


ROUTE	SECTION	COUNTY	TOTAL SHEETS	SHEET NO.
FAS 1928	99-00088-00-RS	UNION	22	17
PROJECT NO. SR-1928 (101)			CONTRACT NO. 99139	

544a, X504 04/04/14 092E1 RLM

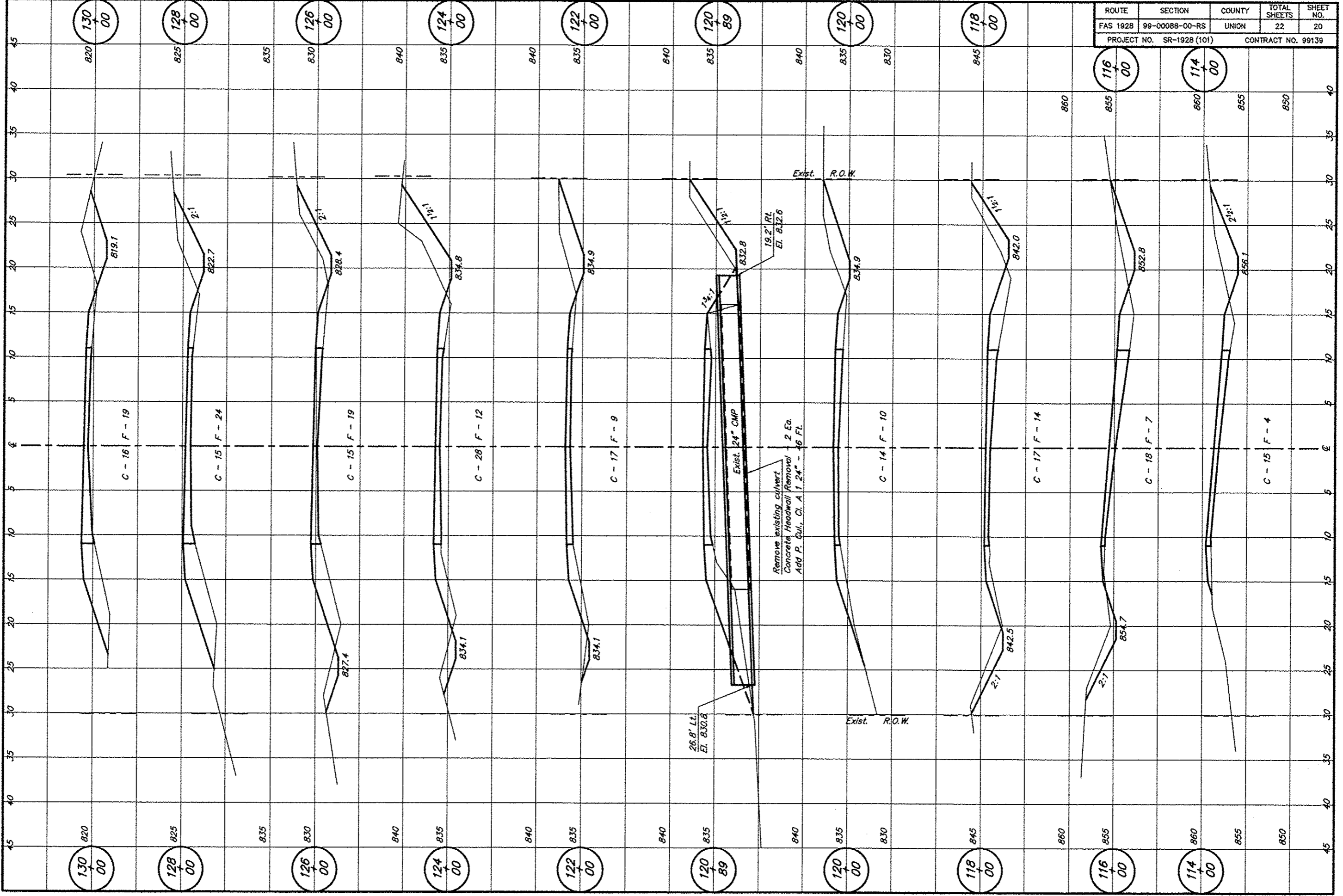


ROUTE	SECTION	COUNTY	TOTAL SHEETS	SHEET NO.
FAS 1928	99-00088-00-RS	UNION	22	18
PROJECT NO. SR-1928 (101)			CONTRACT NO. 99139	



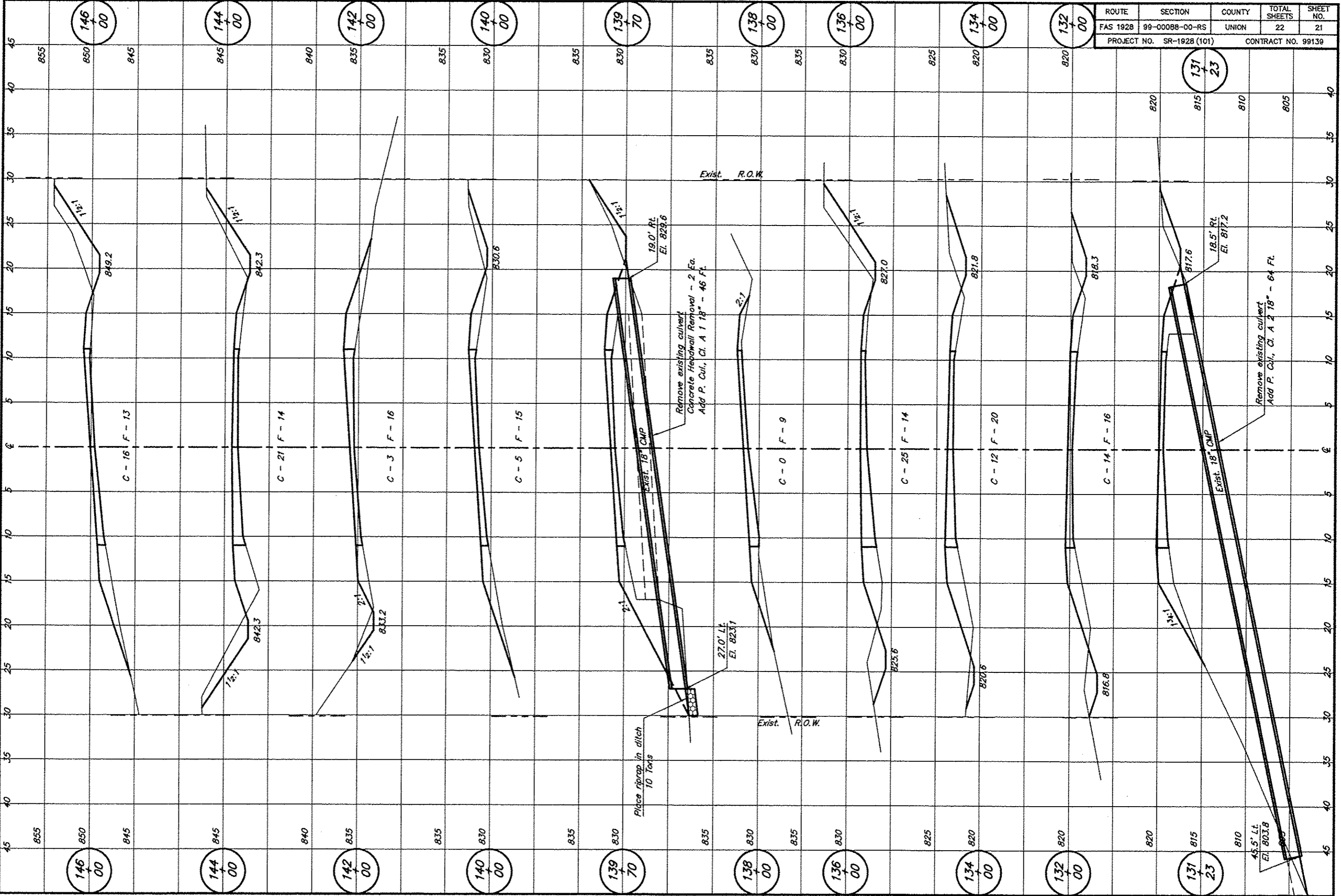
ROUTE	SECTION	COUNTY	TOTAL SHEETS	SHEET NO.
FAS 1928	99-00088-00-RS	UNION	22	19
PROJECT NO. SR-1928 (101)			CONTRACT NO. 99139	

544a XS06 04/04/14 0918 RLM



ROUTE	SECTION	COUNTY	TOTAL SHEETS	SHEET NO.
FAS 1928	99-00088-00-RS	UNION	22	20
PROJECT NO. SR-1928 (101)			CONTRACT NO. 99139	

544a XS07 04/04/14 0917 RLM



ROUTE	SECTION	COUNTY	TOTAL SHEETS	SHEET NO.
FAS 1928	99-00088-00-RS	UNION	22	21
PROJECT NO. SR-1928 (101)			CONTRACT NO. 99139	

