

CONSTRUCTION PLANS FOR PONTIAC MUNICIPAL AIRPORT PONTIAC, ILLINOIS

ILLINOIS PROJECT NO. PNT-4142
AIP PROJECT NO. 3-17-SBGP-XX

REHABILITATE APRON AND CONNECTING TAXIWAY

SUMMARY OF QUANTITIES			
ITEM NO.	ITEM DESCRIPTION	UNIT	QUANTITY
AR150510	ENGINEER'S FIELD OFFICE	LS	1
AR150520	MOBILIZATION	LS	1
AR152480	SHOULDER ADJUSTMENT	SY	3,500
AR156510	SILT FENCE	LF	1,950
AR201661	CLEAN & SEAL BITUMINOUS CRACKS	LF	1,000
AR201663	SAND MIX CRACK REPAIR	LF	500
AR401613	BITUMINOUS SURFACE COURSE - METHOD I, SUPERPAVE	TON	2,300
AR401650	BITUMINOUS PAVEMENT MILLING	SY	9,600
AR510510	TIE DOWN	EA	69
AR510515	GROUND ROD	EA	24
AR510900	REMOVE TIE DOWN	EA	45
AR510905	REMOVE GROUND ROD	EA	14
AR603510	BITUMINOUS TACK COAT	GAL	1,500
AR620520	PAVEMENT MARKING-WATERBORNE	SF	1,400
AR620525	PAVEMENT MARKING-BLACK BORDER	SF	2,350
AR751949	ADJUST INLETS	EA	3
AR751952	ADJUST UNDERDRAIN STRUCTURE	EA	2
AR901510	SEEDING	AC	1
AR908510	MULCHING	AC	1
ADD. ALTERNATE #1			
ITEM NO.	ITEM DESCRIPTION	UNIT	TOTAL QUANT
AR501911	REMOVE AND REPLACE PCC PAVEMENT	SF	1,300

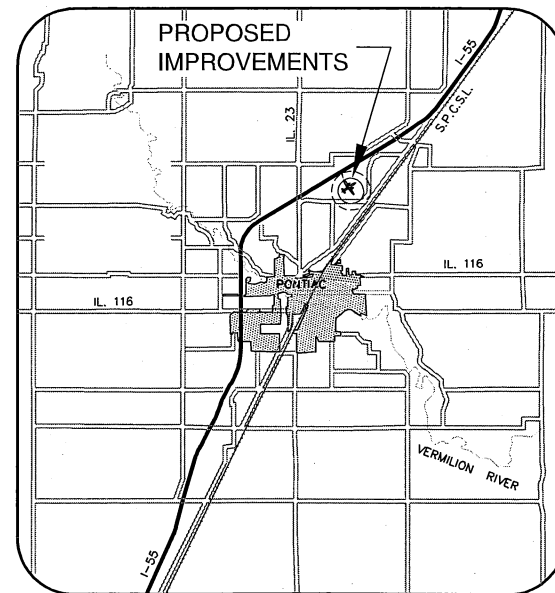
Sheet List Table	
Sheet Number	Sheet Title
1	COVER SHEET
2	SITE PLAN
3	CONSTRUCTION ACTIVITY PLAN NOTES AND DETAILS
4	CONSTRUCTION ACTIVITY PLAN
5	CONSTRUCTION PHASING PLAN
6	EXISTING CONDITIONS & REMOVALS
7	PROPOSED IMPROVEMENTS
8	TYPICAL SECTIONS
9	PLAN AND PROFILE
10	APRON STAKING PLAN 1
11	APRON STAKING PLAN 2
12	MARKING PLAN
13	APRON MARKING AND MOORING PLAN
14	MOORING DETAIL
15	DRAINAGE DETAILS
16	REMOVAL DETAILS
17	PCC PAVEMENT DETAILS

APRIL, 18 2014

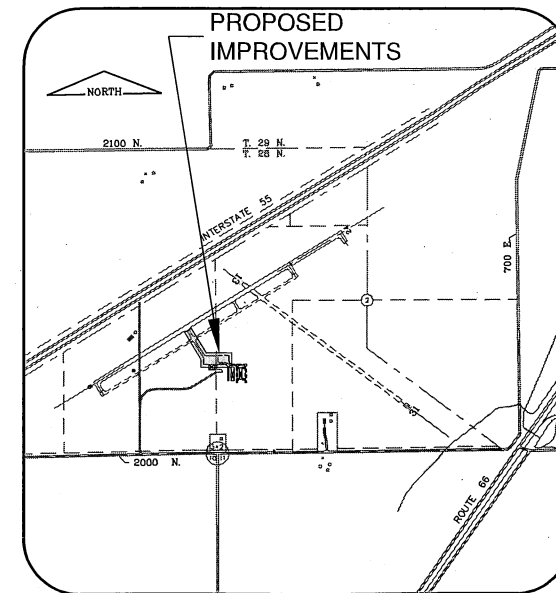
UNICOM FREQUENCY 122.8

DESIGN DATA

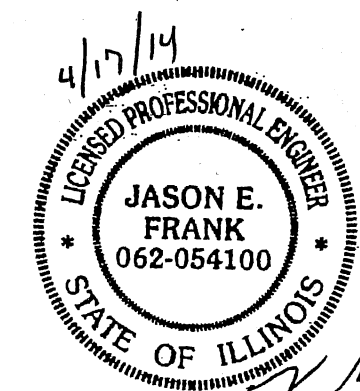
<p>GEOMETRIC DESIGN DATA</p> <p>DESIGN GROUP - II</p> <p>WING SPAN - 49 FEET UP TO BUT NOT INCLUDING 79 FEET.</p> <p>DESIGN APPROACH CATEGORY - B</p>
<p>STRUCTURAL DESIGN DATA</p> <p>AIRCRAFT GROSS WEIGHT - 30,000 LBS.</p> <p>SINGLE WHEEL AIRCRAFT</p>
<p>CALL J.U.L.I.E. BEFORE EXCAVATING 1-800-892-0123 PONTIAC MUNICIPAL AIRPORT</p>
<p>TOWNSHIP: T28N RANGE: R5E COUNTY: LIVINGSTON TOWNSHIP: PONTIAC LOCATION: 1 MILE EAST OF RTE. 23 OVERPASS ON INTERSTATE 55 SECTION 3</p>



LOCATION MAP



SITE PLAN



J. E. Frank
EPP 11-30-15

MAXIMUM EQUIPMENT HEIGHT
25 FEET

CITY OF PONTIAC
PONTIAC MUNICIPAL AIRPORT
PONTIAC, ILLINOIS
APPROVED: *[Signature]*
DATE: APRIL 16, 2014

CMT
CRAWFORD, MURPHY & TILLY, INC.
CONSULTING ENGINEERS
License No. 184-000613

SUBMITTED BY: *[Signature]*
DATE: APRIL 17, 2014
CM&T JOB NUMBER 13054-02

FILE: K:\Pontiac\Aip\030502\Draw\shans01_Cover.DWG
 MODIFIED: Mon 2/20/14 11:28am
 LAST UPDATE: mshans