

EXISTING AIRPORT COORDINATE TABLE			
LOCATION	LATITUDE N.	LONGITUDE W.	ELEVATION
RUNWAY 6	40° 55' 15.1063"	88° 37' 54.0035"	648.6
RUNWAY 24	40° 55' 40.9458"	88° 36' 58.4819"	665.9



LEGEND

EXISTING	PROPOSED	DESCRIPTION
		AIRPORT BUILDINGS
		HOUSES AND OUTBUILDINGS
		GROUND CONTOURS
		OVERHEAD POWER LINE
		CONTRACTOR'S ACCESS ROUTE TO SITE
		CONTRACTOR'S STAGING, STORAGE AND PERSONNEL VEHICLE PARKING SITE

NOTE:
 1.) CONTRACTOR SHALL USE HAUL ROAD AT THE ALIGNMENT AS SHOWN.

BASELINE PointBASE

P0018

REVISIONS		
NUMBER	BY	DATE

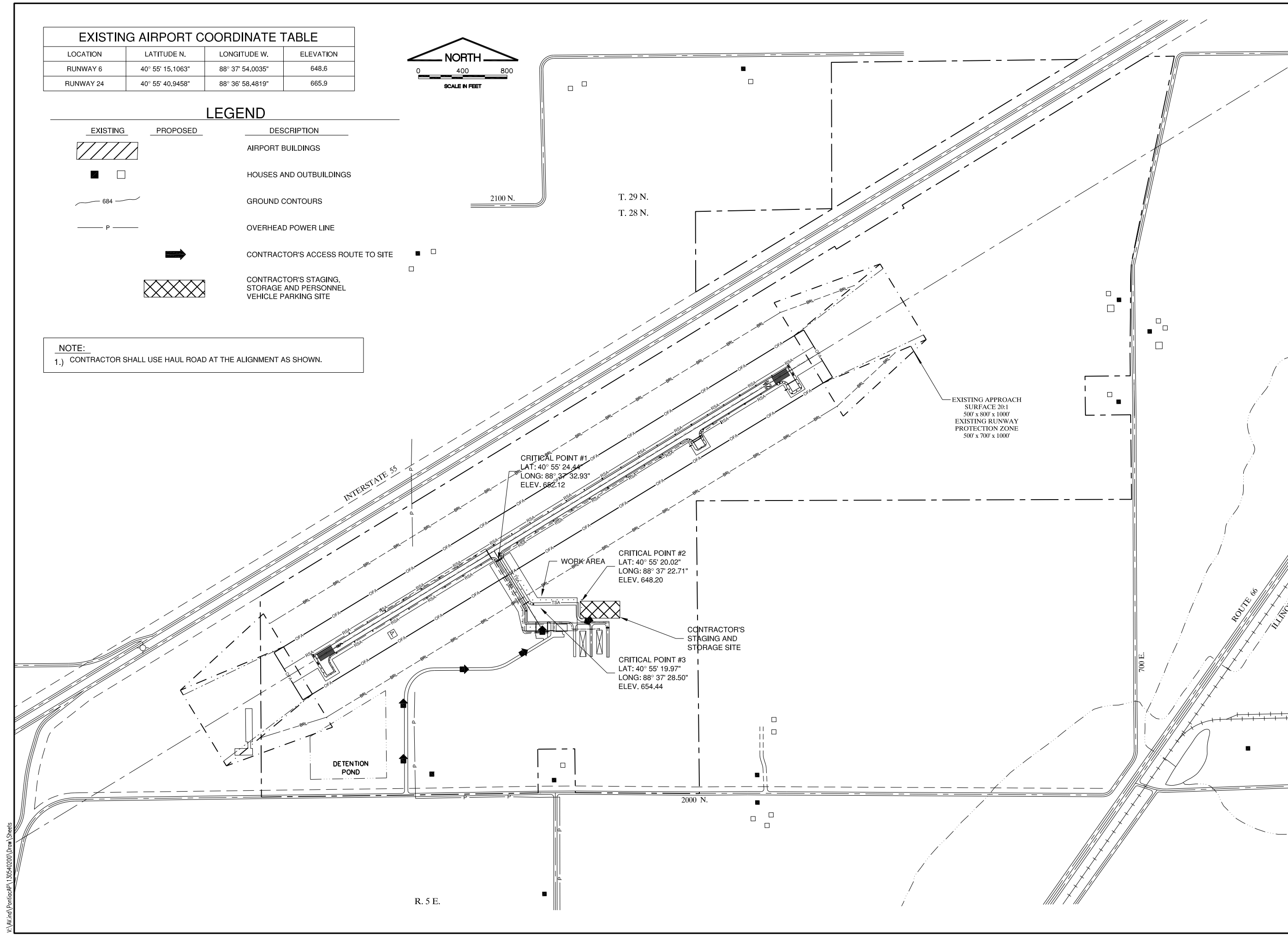
0 1 2
 THIS BAR IS EQUAL TO 2" AT FULL SCALE (34X22).

**PONTIAC MUNICIPAL AIRPORT
 PONTIAC, ILLINOIS
 REHABILITATE APRON AND CONNECTING TAXIWAY
 SITE PLAN**

© Copyright CMT, Inc.

CMT
 CRAWFORD, MURPHY & TILLY, INC.
 CONSULTING ENGINEERS
 License No. 184-000613

DESIGN BY:	JEF
DRAWN BY:	JEF, ADD
CHECKED BY:	RJH
APPROVED BY:	JEF
DATE:	APRIL 18, 2014
JOB No:	1305402
IL. PROJ. NO. PNT-4142 AIP PROJ. NO. 3-17-SBGP-XX	
SHEET	2 OF 17 SHEETS



W:\AV\and\PontiacPA\130540200\Drawn\Sheets