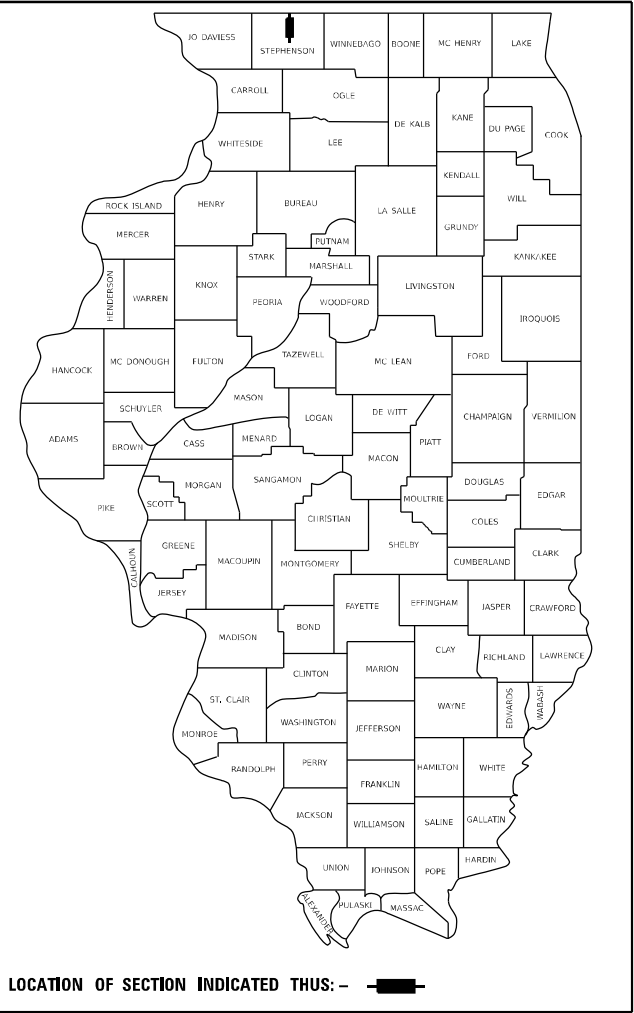



STATE OF ILLINOIS
DEPARTMENT OF TRANSPORTATION

F.A.P. RTE.	SECTION	COUNTY	TOTAL SHEETS	SHEET NO.
316	(101BR-3)BDR	STEPHENSON	29	1
		ILLINOIS	CONTRACT NO. 64T99	

D-92-073-25



LOCATION OF SECTION INDICATED THUS: - ■ -



QUANDEL
CONSULTANTS

161 NORTH CLARK STREET
SUITE 2975
CHICAGO, IL 60601
312-634-6201

DESIGN FIRM - PROF/STRUCT ENGINEER
IL LIC. 184.005283-0006

STATE OF ILLINOIS
DEPARTMENT OF TRANSPORTATION

SUBMITTED May 13 2025

Julia Thompson
REGIONAL ENGINEER

May 9 2025
Scott Etkin
ENGINEER OF DESIGN AND ENVIRONMENT

May 9 2025
James R. Push
DIRECTOR OF HIGHWAYS PROJECT IMPLEMENTATION

PRINTED BY THE AUTHORITY
OF THE STATE OF ILLINOIS

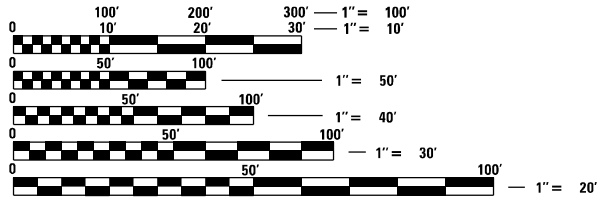
FOR INDEX OF SHEETS, SEE SHEET NO. 2
FOR STATE STANDARDS, SEE SHEET NO. 2

PROPOSED
HIGHWAY PLANS

FAP ROUTE 316(IL 26)
SECTION (101BR-3)BDR
PROJECT
REPAIR OF STRUCTURE SN 089-0072
CARRYING IL 26 OVER DRAINAGE DITCH
STEPHENSON COUNTY

C-92-198-24

BUCKEYE TOWNSHIP
T28N R7E, SECTION 13



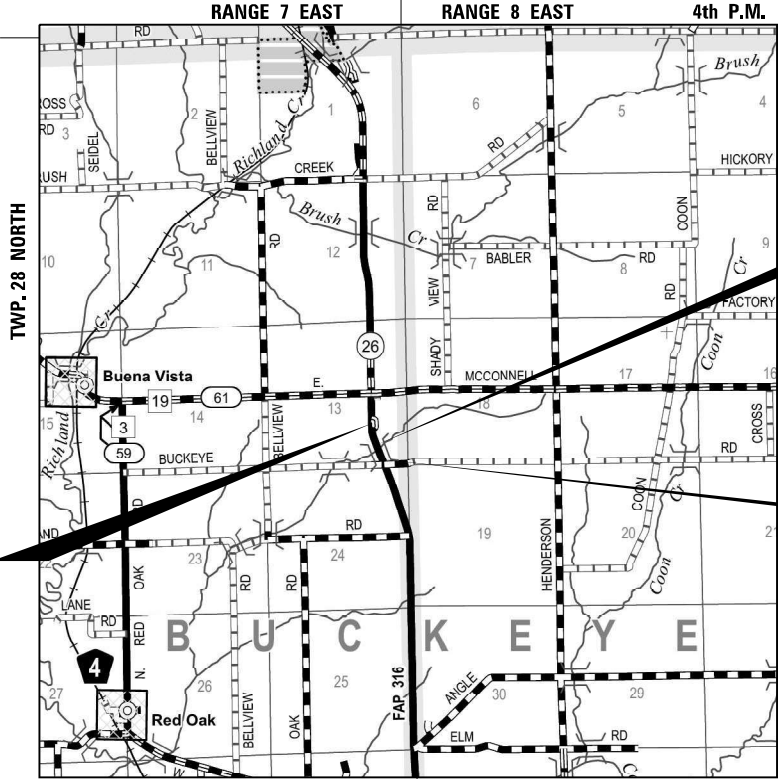
FULL SIZE PLANS HAVE BEEN PREPARED USING STANDARD
ENGINEERING SCALES. REDUCED SIZED PLANS WILL NOT
CONFORM TO STANDARD SCALES. IN MAKING MEASUREMENTS
ON REDUCED PLANS, THE ABOVE SCALES MAY BE USED.

J.U.L.I.E.
JOINT UTILITY LOCATION INFORMATION FOR EXCAVATORS
1-800-892-0123
OR 811

PROJECT ENGINEER: JAMES R. PUSH, PE
PROJECT MANAGER: DERRICK LOPEZ, PE

CONTRACT NO. 64T99

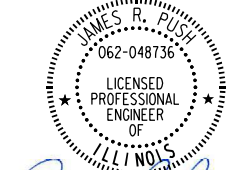
IMPROVEMENTS BEGINS
Sta. 354 + 68.00



BRIDGE REPAIRS
EXIST SN 089-0072

IMPROVEMENTS ENDS
Sta. 359 + 76.00

GROSS LENGTH = 508.00 FT. = 0.096 MILE
NET LENGTH = 508.00 FT. = 0.096 MILE



James R. Push
JAMES R. PUSH, P.E.
LICENSE NO.: 062-048736
EXPIRES: NOVEMBER 30, 2025
DATE: 03/25/2025

MODEL: Default
FILE NAME: C:\Users\jpush\OneDrive - QEI\OC\Doc\Consult\Projects\2406_D2-Vac-Var 210-017400-Work\WO-03410-CADD\Design\2684T99_SHT_Gen Notes.dgn

INDEX OF SHEETS

1	COVER SHEET
2	INDEX OF SHEETS, STATE STANDARDS & GENERAL NOTES
3 - 5	SUMMARY OF QUANTITIES
6 - 7	SCHEDULES
8 - 12	MAINTENANCE OF TRAFFIC PLANS
13	REMOVAL PLAN
14	ROADWAY PLAN
15 - 19	STRUCTURE REPAIR PLANS SN 089-0072
20	PAVEMENT MARKING PLAN
21 - 24	WORK ZONE SIGN DETAILS (DISTRICT STD 34.1)
25 - 28	TYPICAL PAVEMENT MARKINGS (DISTRICT STD 41.1)
29	GUARDRAIL REFLECTORS, TYPE C (SPECIAL) (DISTRICT STD 55.1)

STATE STANDARDS

000001-08	STANDARDS SYMBOLS, ABBREVIATIONS AND PATTERNS
001001-02	AREAS OF REINFORCEMENT BARS
001006	DECIMALS OF AN INCH AND OF A FOOT
420406	PAVEMENT CONNECTOR (HMA) FOR BRIDGE APPROACH SLAB
630001-13	STEEL PLATE BEAM GUARDRAIL
630201-07	PCC/HMA STABILIZATION AT STEEL PLATE BEAM GUARDRAIL
630301-09	SHOULDER WIDENING FOR TYPE 1 (SPECIAL) GUARDRAIL TERMINALS
631031-18	TRAFFIC BARRIER TERMINAL, TYPE 6
642006-01	SHOULDER RUMBLE STRIPS, 8 IN
701001-02	OFF-ROAD OPERATIONS, 2L, 2W, MORE THAN 15' (4.5 M) AWAY
701006-05	OFF-ROAD OPERATIONS, 2L, 2W, 15' (4.5 M) TO 24"(600 MM) FROM PAVEMENT EDGE
701201-05	LANE CLOSURE, 2L, 2W, DAY ONLY, FOR SPEEDS ≥ 45 MPH
701301-04	LANE CLOSURE, 2L, 2W, SHORT TIME OPERATIONS
701311-03	LANE CLOSURE, 2L, 2W, MOVING OPERATIONS-DAY ONLY
701321-19	LANE CLOSURE, 2L, 2W, BRIDGE REPAIR WITH BARRIER
701326-04	LANE CLOSURE, 2L, 2W, PAVEMENT WIDENING, FOR SPEEDS ≥ 45 MPH
701901-10	TRAFFIC CONTROL DEVICES
704001-08	TEMPORARY CONCRETE BARRIER
725001-01	OBJECT AND TERMINAL MARKERS
780001-05	TYPICAL PAVEMENT MARKINGS
781001-04	TYPICAL APPLICATIONS RAISED REFLECTIVE PAVEMENT MARKERS
782006-01	GUARDRAIL AND BARRIER WALL REFLECTOR MOUNTING DETAIL

GENERAL NOTES

ALL BORROW/WASTE/USE SITES MUST BE APPROVED BY THE DEPARTMENT PRIOR TO REMOVING ANY MATERIAL FROM THE PROJECT OR INITIATING ANY EARTHMOVING ACTIVITIES, INCLUDING TEMPORARY STOCKPILING OUTSIDE THE LIMITS OF CONSTRUCTION.

THE CONTRACTOR SHALL SUBMIT A SEQUENCE OF CONSTRUCTION OPERATIONS TO THE RESIDENT ENGINEER FOR APPROVAL BEFORE THIS PROJECT IS STARTED.

THE CONTRACTOR SHALL BE RESPONSIBLE FOR PROTECTING UTILITY PROPERTY DURING CONSTRUCTION OPERATIONS AS OUTLINED IN ARTICLE 107.31 OF THE STANDARD SPECIFICATIONS. A MINIMUM OF 48 HOURS ADVANCE NOTICE IS REQUIRED FOR NON-EMERGENCY WORK. THE JULIE NUMBER IS 800-892-0123.

IDOT IS NOT A MEMBER OF JULIE. IF YOU ARE NEAR ANY OVERHEAD LIGHTING, INTERSECTION LIGHTING OR TRAFFIC SIGNALS, CONTACT THE IDOT TRAFFIC OFFICE AT 815-284-5469 AT LEAST 48 HOURS PRIOR TO WORK.

NO STREAM PERMITS HAVE BEEN PROCURED FOR THIS PROJECT. NONE ARE REQUIRED FROM THE REGULATORY AGENCIES IF THERE IS NO DEBRIS FALLING OR BEING PLACED INTO THE STREAM. ANY TEMPORARY FILL IN THE STREAM OR THE COMPROMISING OF THE DIKE (IF APPLICABLE) WILL NOT BE ALLOWED. IF THE CONTRACTOR CHOOSES TO USE ALTERNATE/MODIFIED CONSTRUCTION METHOD(S), THEY WILL BE RESPONSIBLE FOR OBTAINING THE PROPER PERMITS. NO RELIEF OR COMPENSATION WILL BE GIVEN FOR ANY DELAYS. WORKING DAYS CHARGED OR CALENDAR DAYS EXPIRED DUE TO THE LOSS OF TIME OR DELAY DURING THE RE-SUBMITTAL PROCESS TO PROCURE THE NECESSARY PERMIT(S) DUE TO THE CONTRACTOR CHOOSING ALTERNATE/MODIFIED CONSTRUCTION METHOD(S). ABSOLUTELY NO CONSTRUCTION ACTIVITIES WILL TAKE PLACE WITHOUT THE PROPER PERMITS BEING SECURED.

ALL ELEVATIONS SHOWN IN PLANS ARE BASED ON NORTH AMERICAN VERTICAL DATUM OF 1988 (NAVD 88).

THERE ARE NO COMMITMENTS ASSOCIATED WITH THIS PROJECT.

IDOT DISTRICT 2 OPERATIONS TRAFFIC SIGNAL SECTION SHALL BE CONTACTED AT 815-284-2271 FOR CONTROLLER PROGRAMMING AND TIMING APPROVAL PRIOR TO ACTIVATING THE TEMPORARY BRIDGE TRAFFIC SIGNALS.

ALL SAW CUTS NECESSARY TO COMPLETE THE WORK DETAILED IN THESE PLANS SHALL BE INCLUDED IN THE COST FOR THE VARIOUS PAY ITEMS INVOLVED.

PAVEMENT MARKING SHALL BE DONE ACCORDING TO STANDARD 780001, EXCEPT AS FOLLOWS:

- ALL WORDS, SUCH AS ONLY, SHALL BE 8 FEET HIGH.
- ALL NON-FREEWAY ARROWS SHALL BE THE LARGE SIZE.
- THE DISTANCE BETWEEN YELLOW NO-PASSING LINES SHALL BE 8 INCHES, NOT 7 INCHES, AS SHOWN IN THE DETAIL OF TYPICAL LANE AND EDGE LINES.
- CENTERLINE SKIP DASH PAVEMENT MARKING ON MULTI-LANE DIVIDED, MULTI-LANE UNDIVIDED, AND ONE-WAY ROADWAY SHALL BE ACCORDING TO DISTRICT STANDARD 41.1.

UNLESS DIRECTED BY THE ENGINEER, PAVEMENT MARKING LINES SHALL NOT BE LAID DIRECTLY OVER A LONGITUDINAL CRACK OR JOINT NOR OVER A TAR OR ASPHALT PAINTED LINE.

- THE EDGE OF A CENTERLINE OR LANE LINE SHALL BE OFFSET A MINIMUM DISTANCE OF 2" FROM A LONGITUDINAL CRACK OR JOINT.
- EDGE LINES SHALL BE APPROXIMATELY 2" FROM THE EDGE LINE OF PAVEMENT. SEE SECTION 780 OF THE STANDARD SPECIFICATIONS FOR TRAFFIC CONTROL ITEMS.

AREAS OF DECK REPAIRS SHOWN ARE ESTIMATED. THE ENGINEER SHALL SHOW ACTUAL LOCATIONS OF DECK REPAIRS ON AS-BUILT PLANS.

THE QUANTITIES INCLUDED IN THE PLANS FOR HOT-MIX ASPHALT RESURFACING ARE INTENDED TO GIVE THE COVERAGE SHOWN ON THE TYPICAL CROSS SECTIONS. IT IS NOT INTENDED TO INCREASE THE THICKNESS OF THE HOT-MIX ASPHALT MIXTURE IN ORDER TO USE ALL OF THE QUANTITIES INCLUDED IN THE CONTRACT.

THE FOLLOWING MIXTURE REQUIREMENTS ARE APPLICABLE FOR THIS PROJECT:

MIXTURE USE(S):	HMA SURFACE CSE	HMA SHOULDERS LOWER LIFTS
PG:	PG 58 -28	PG 58 -28
DESIGN AIR VOIDS:	4.0% @ N DESIGN - 50	4.0% @ N DESIGN - 50
MIXTURE COMPOSITION:	IL 9.5	IL 19.0
FRICTION AGGREGATE:	C	N/A
QUALITY MANAGEMENT PROGRAM:	112 LB/SY/IN	N/A
MIX WEIGHT	QC / QA	QC / QA
SUBLOT SIZE:	N / A	N / A
MATERIAL TRANSFER DEVICE:	N / A	N / A

POLYMERIZED BITUMINOUS MATERIALS (TACK COAT) - APPLICATION RATES *	
SURFACE TYPE	RESIDUAL RATE
MILLED (HMA - PCC)	0.05 LB/SQ FT
EXISTING PAVEMENT	0.05 LB/SQ FT
FOG COAT (BETWEEN LIFTS)	0.05 LB/SQ FT

* Polymer tack shall be SS-1hP, CSS-1hP, or NTEA listed material

	USER NAME = jpush	DESIGNED - JRP	REVISED -	STATE OF ILLINOIS DEPARTMENT OF TRANSPORTATION	INDEX OF SHEETS, STATE STANDARDS & GENERAL NOTES IL 26 OVER DRAINAGE DITCH			F.A.P. RTE.	SECTION	COUNTY	TOTAL SHEETS	SHEET NO.
		DRAWN - JRP	REVISED -					316	(101BR-3)BDR	STEPHENSON	29	2
		CHECKED - JRP	REVISED -					CONTRACT NO. 64T99				
	PLOT DATE = 2/8/2025	DATE - 03/25/2025	REVISED -		SCALE: 1" = 20'	SHEET 2	OF 5 SHEETS	STA.	TO STA.	ILLINOIS FED.AID PROJECT		

MODEL: Default
FILE NAME: C:\Users\jpush\OneDrive - QEI\QC\Docs\Consult\Projects\2406_D2\Var-Ver 210-017400-Work\WO-03410-CADD\Design\26\84T99_SHT_Summary of Quantities.dgn

CODE NO.	ITEM	UNIT	TOTAL QUANTITY	CONSTRUCTION CODE	
				STEPHENSON COUNTY FUNDING: 100% STATE	
				ROADWAY 0006	BRIDGE 0059
				RURAL	SN 089-0072
20200600	EXCAVATING AND GRADING EXISTING SHOULDER	UNIT	9	9	
40600370	LONGITUDINAL JOINT SEALANT	FOOT	785	785	
40603080	HOT-MIX ASPHALT BINDER COURSE, IL-19.0, N50	TON	20	20	
40604050	HOT-MIX ASPHALT SURFACE COURSE, IL-9.5, MIX "C", N50	TON	75	75	
40800031	POLYMERIZED BITUMINOUS MATERIALS (TACK COAT)	POUND	859	859	
44000155	HOT-MIX ASPHALT SURFACE REMOVAL, 1 1/2"	SQ YD	507	507	
44004250	PAVED SHOULDER REMOVAL	SQ YD	528	528	
44213200	SAW CUTS	FOOT	805	805	
48203023	HOT-MIX ASPHALT SHOULDERS, 6 1/2"	SQ YD	533	533	
50300300	PROTECTIVE COAT	SQ YD	588		588
59000200	EPOXY CRACK INJECTION	FOOT	16		16
60300105	FRAMES AND GRATES TO BE ADJUSTED	EACH	2		2
* 63100085	TRAFFIC BARRIER TERMINAL, TYPE 6	EACH	4	4	
63200310	GUARDRAIL REMOVAL	FOOT	150	150	
67000400	ENGINEER'S FIELD OFFICE, TYPE A	CAL MO	3	3	
67100100	MOBILIZATION	L SUM	1	1	

* DENOTES SPECIALTY ITEM

	USER NAME = jpush	DESIGNED - JRP	REVISED -	STATE OF ILLINOIS DEPARTMENT OF TRANSPORTATION	SUMMARY OF QUANTITIES IL 26 OVER DRAINAGE DITCH			F.A.P. RTE.	SECTION	COUNTY	TOTAL SHEETS	SHEET NO.
		DRAWN - JRP	REVISED -					316	(101BR-3)BDR	STEPHENSON	29	3
		CHECKED - JRP	REVISED -					CONTRACT NO. 64T99				
	PLOT DATE = 2/8/2025	DATE - 03/25/2025	REVISED -		SCALE: N.T.S.	SHEET 1	OF 3 SHEETS	STA.	TO STA.	ILLINOIS FED. AID PROJECT		

MODEL: Default
FILE NAME: C:\Users\jpush\OneDrive - QEI\QC\Doc\Consult\Projects\2406_D2\Var-Ver 210-017400-Work\WO-03410-CADD\Design\264T99_SHT_Summary of Quantities.dgn

CODE NO.	ITEM	UNIT	TOTAL QUANTITY	CONSTRUCTION CODE	
				STEPHENSON COUNTY FUNDING: 100% STATE	
				ROADWAY 0006	BRIDGE 0059
				RURAL	SN 089-0072
70100405	TRAFFIC CONTROL AND PROTECTION, STANDARD 701321	EACH	1	1	-
70100450	TRAFFIC CONTROL AND PROTECTION, STANDARD 701201	L SUM	1	1	
70100500	TRAFFIC CONTROL AND PROTECTION, STANDARD 701326	L SUM	1	1	
70103815	TRAFFIC CONTROL SURVEILLANCE	CAL DA	6	6	
70106500	TEMPORARY BRIDGE TRAFFIC SIGNALS	EACH	1	1	
70106700	TEMPORARY RUMBLE STRIPS	EACH	12	12	
70107025	CHANGEABLE MESSAGE SIGN	CAL DA	28	28	
70300150	SHORT TERM PAVEMENT MARKING REMOVAL	SQ FT	607	607	
70307120	TEMPORARY PAVEMENT MARKING - LINE 4" - TYPE IV TAPE	FOOT	1,660	1,660	
70307210	TEMPORARY PAVEMENT MARKING - LINE 24"- TYPE IV TAPE	FOOT	24	24	
70400100	TEMPORARY CONCRETE BARRIER	FOOT	468.72	468.72	
70400200	RELOCATE TEMPORARY CONCRETE BARRIER	FOOT	278.67	278.67	
70600251	IMPACT ATTENUATORS, TEMPORARY (NON- REDIRECTIVE, NARROW), TEST LEVEL 3	EACH	2	2	
70600352	IMPACT ATTENUATORS, RELOCATE (NON- REDIRECTIVE,NARROW), TEST LEVEL 3	EACH	2	2	
* 78001110	PAINT PAVEMENT MARKING - LINE 4"	FOOT	7,600	7,600	
* 78300202	PAVEMENT MARKING REMOVAL - WATER BLASTING	SQ FT	558	558	

* DENOTES SPECIALTY ITEM

	USERNAME = jpush	DESIGNED - JRP	REVISED -	STATE OF ILLINOIS DEPARTMENT OF TRANSPORTATION	SUMMARY OF QUANTITIES IL 26 OVER DRAINAGE DITCH			F.A.P. RTE.	SECTION	COUNTY	TOTAL SHEETS	SHEET NO.
		DRAWN - JRP	REVISED -					316	(101BR-3)BDR	STEPHENSON	29	4
		CHECKED - JRP	REVISED -					CONTRACT NO. 64T99				
	PLOT DATE = 2/8/2025	DATE - 03/25/2025	REVISED -		SCALE: N.T.S.	SHEET 2	OF 3 SHEETS	STA.	TO STA.	ILLINOIS FED. AID PROJECT		

MODEL: Default
FILE NAME: C:\Users\pushi\OneDrive - QEI\QCDoc\QCConsult\Projects\2406_D2-Var-Var 210-017400-Work\WO-031410-CADD\Design\26164T99_SHT_Summary of Quantities.dgn

[illegible]

* DENOTES SPECIALTY ITEM

FILE NAME:	USER NAME = jpush	DESIGNED - JRP	REVISED -	STATE OF ILLINOIS DEPARTMENT OF TRANSPORTATION	SUMMARY OF QUANTITIES IL 26 OVER DRAINAGE DITCH				F.A.P. RTE.	SECTION	COUNTY	TOTAL SHEETS	SHEET NO.
		DRAWN - JRP	REVISED -						316	(101BR-3)BDR	STEPHENSON	29	5
		CHECKED - JRP	REVISED -		CONTRACT NO. 64T99								
	PLOT DATE = 2/8/2025	DATE - 03/25/2025	REVISED -										
					SCALE: N.T.S.	SHEET 3	OF 3	SHEETS	STA.	TO STA.			

MODEL: Default
FILE NAME: C:\Users\jpush\OneDrive - QEI\QCDocs\Consult\Projects\2406_D2-Vac\Var 210-017400-Work\WO-03410-CADD\Design\2684T99_SHT_ SCHEDULES.dgn

LOCATION			70300150	70307120	70307210	70400100	70400200	70600251	70600352	78001110	78300202	
			SHORT TERM PAVEMENT MARKING REMOVAL	TEMPORARY PAVEMENT MARKING - LINE 4" - TYPE IV TAPE	TEMPORARY PAVEMENT MARKING - LINE 24"- TYPE IV TAPE	TEMPORARY CONCRETE BARRIER	RELOCATE TEMPORARY CONCRETE BARRIER	IMPACT ATTENUATORS, TEMPORARY (NON- REDIRECTIVE, NARROW), TEST LEVEL 3	IMPACT ATTENUATORS, RELOCATE (NON- REDIRECTIVE, NARROW), TEST LEVEL 3	PAINT PAVEMENT MARKING - LINE 4"	PAVEMENT MARKING REMOVAL - WATER BLASTING	
STA.	STA.	OFFSET	SQ FT	FOOT	FOOT	FOOT	FOOT	EACH	EACH	FOOT	SQ FT	
STAGE 1 MOT												
354+78	359+66	12' RT									163	
354+78	356+03	12' LT									42	
358+41	359+06	12' LT									42	
353+20	356+03	CL									121	
358+41	361+26	CL									190	
353+18		RT			12							
353+34	355+26	12' RT - 4' LT	65	193								
355+26	359+18	4' LT										
359+18	360+66	4' LT - 12' RT	50	149								
354+78	355+26	12' LT - 16' LI	17	49								
355+26	359+18	16' LT	131	392								
359+18	359+66	16' LT - 12' LT	17	49								
361+24		LT			12							
354+87.94		6' RT						1				
354+87.94	355+76.33	LT				88.69						
355+76.33	358+67.67	3' LT				291.34						
358+67.67	359+56.05	LT				88.69						
359+56.05		6' RT						1				
STAGE 2 MOT												
353+18		RT	24									
353+80	355+28	12' LT' 4' RT	50	149								
355+28	359+16	4' RT										
359+16	361+08	4' RT - 12' LT	65	193								
354+80	355+28	12' RT - 16' RT	17	49								
355+28	359+16	16' RT	130	388								
359+16	359+64	16' RT - 12' RT	17	49								
361+18		LT	24									
354+88		6' LT							1			
354+87.94	355+76.33	LT					88.69					
355+76.33	357+66.31	3' RT					189.98					
357+66.31		3' RT						1				
Post-Stage												
352+50	362+00	12' LT								950		
352+50	362+00	CL								1900		
352+50	362+00	12' RT								950		
TOTAL			607	1660	24	468.72	278.67	2	2	3800	558	
											2nd APPLICATION TOTAL	3800
												7600

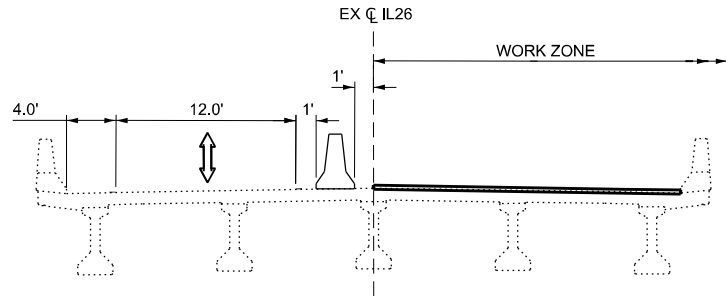
MODEL: Default
FILE NAME: C:\Users\jpush\OneDrive - QEI\QCDocs\Consult\Projects\2406_D2-Var\var 210-017400-Work\WO-03410-CADD\Design\2684T99_SHT_SCHEDULES.dgn

				20200600	40800031	40600370	40603080	40604050	44000155	44004250	44213200	48203023
LOCATION				EXCAVATING AND GRADING EXISTING SHOULDER	POLYMERIZED BITUMINOUS MATERIALS (TACK COAT)	LONGITUDINAL JOINT SEALANT	HOT-MIX ASPHALT BINDER COURSE, IL-19.0, N50	HOT-MIX ASPHALT SURFACE COURSE, IL-9.5, MIX "C", N50	HOT-MIX ASPHALT SURFACE REMOVAL, 1 1/2"	PAVED SHOULDER REMOVAL	SAW CUTS	HOT-MIX ASPHALT SHOULDERS,6 1/2"
STA.	STA.	OFFSET		UNIT	POUND	FOOT	TON	TON	SQ YD	SQ YD	FOOT	SQ YD
SHOULDERS												
354+68.0	355+57.5	13'-18"	LT	0.9	69.8	90	1.3	4.2	33.3	49.7	95	49.8
355+57.5	356+63.5	13'-20'	LT	1.1	109.2	106	1.8	7.0	46.7	82.4	106	82.5
357+80.4	357+94.0	13'-20'	LT	0.2	44.6	14	1.3	0.9	33.3	10.6	14	10.6
357+94.0	359+76.0	13'-18"	LT	1.9	116.0	182	1.8	8.5	46.7	101.1	187	101.2
354+68.0	354+88.0	13'-20'	RT	0.2	14.0	20		1.4		11.1	25	15.6
354+88.0	356+63.5	13'-20'	RT	1.8	122.9	176		11.5		136.5	176	136.5
357+80.4	359+02.5	13'-20'	RT	1.3	85.5	123		8.0		95.0	123	95.0
359+02.5	359+76.0	13'-18"	RT	0.8	36.8	74		3.5		40.8	79	40.9
MAINLINE												
356+03.5	356+63.5	CL-13'	LT		65.0		3.3	7.3	86.7			
356+03.5	356+63.5	CL-13'	RT		65.0		3.3	7.3	86.7			
357+80.4	358+40.4	CL-13'	LT		65.0		3.3	7.3	86.7			
357+80.4	358+40.4	CL-13'	RT		65.0		3.3	7.3	86.7			
				TOTAL	8.2	858.8	19.4	74.2	506.8	527.2	805	532.1
				USE	9	859	785	20	507	528	805	533

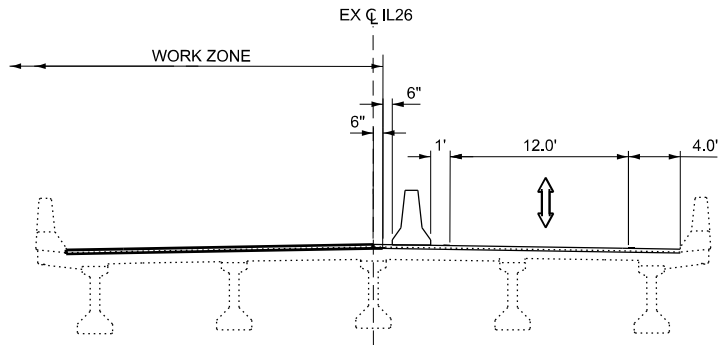
			63100085	63200310	X7820007
LOCATION			TRAFFIC BARRIER TERMINAL, TYPE 6	GUARDRAIL REMOVAL	GUARDRAIL REFLECTORS, TYPE C (SPECIAL)
STA.	STA.	LOC.	EACH	FOOT	SQ FT
356+56.65	356+94.15	RT	1	37.5	
357+50.05	357+87.55	RT	1	37.5	
356+56.65	356+94.15	LT	1	37.5	
357+50.05	357+87.55	LT	1	37.5	
355+20.00	358+20.00	RT			5
355+70.00	358+40.00	LT			5
TOTAL			4	150	10

	USER NAME = jpush	DESIGNED - JRP	REVISED -	STATE OF ILLINOIS DEPARTMENT OF TRANSPORTATION	SCHEDULES IL 26 OVER DRAINAGE DITCH			F.A.P. RTE.	SECTION	COUNTY	TOTAL SHEETS	SHEET NO.
		DRAWN - JRP	REVISED -					316	(101BR-3)BDR	STEPHENSON	29	7
		CHECKED - JRP	REVISED -					CONTRACT NO. 64T99				
	PLOT DATE = 2/8/2025	DATE - 03/25/2025	REVISED -		SCALE: N.T.S.	SHEET 2	OF 2	SHEETS	STA.	TO STA.	ILLINOIS	FED. AID PROJECT

MODEL: Default
FILE NAME: C:\Users\jpush\OneDrive - QEI\QCDocs\Consult\Projects\2406_D2-Var\var 210-017400-Work\WO-03410-CADD\Design\2684T99_SHT_MOT Typical.dgn



STAGE 1 TYPICAL SECTION
STA 354+78 TO STA 359+66
(LOOKING SOUTH)



STAGE 2 TYPICAL SECTION
STA 354+78 TO STA 359+66
(LOOKING SOUTH)

STAGE CONSTRUCTION NOTES

PRE-STAGE TRAFFIC
CLOSE NORTHBOUND LANE AS REQUIRED USING HIGHWAY STANDARD 701326.

PRE-STAGE CONSTRUCTION
CONSTRUCT NORTHBOUND SHOULDER IMPROVEMENT AND GUARDRAIL IMPROVEMENTS AS DETAILED IN PLAN DRAWINGS.

STAGE 1 TRAFFIC
CLOSE SOUTHBOUND LANE TRANSITIONING SOUTHBOUND AND NORTHBOUND TRAFFIC INTO THE NORTHBOUND LANE AND SHOULDER USING HIGHWAY STANDARD 701321 AND AS DETAILED IN THE MAINTENANCE OF TRAFFIC STAGE 1 TYPICAL SECTION AND PLANS.

STAGE 1 CONSTRUCTION
CONSTRUCT BRIDGE REHABILITATION AND BRIDGE APPROACH WORK ON SOUTHBOUND LANES AS DETAILED IN THE STRUCTURAL PLANS. CONSTRUCT SOUTHBOUND SHOULDER IMPROVEMENTS AND SOUTHBOUND ROADWAY PAVEMENT IMPROVEMENTS AS DETAILED IN THE PLANS. CONSTRUCT GUARDRAIL IMPROVEMENTS ON SOUTHBOUND SIDE OF ROADWAY AS DETAILED IN THE PLANS.

STAGE 2 TRAFFIC
CLOSE NORTHBOUND LANE TRANSITIONING NORTHBOUND AND SOUTHBOUND TRAFFIC INTO THE SOUTHBOUND LANE AND SHOULDER USING HIGHWAY STANDARD 701321 AND AS DETAILED IN THE MAINTENANCE OF TRAFFIC STAGE 2 TYPICAL SECTION PLANS.

STAGE 2 CONSTRUCTION
CONSTRUCT BRIDGE REHABILITATION AND BRIDGE APPROACH WORK ON NORTHBOUND LANES AS DETAILED IN THE STRUCTURAL PLANS. CONSTRUCT NORTHBOUND ROADWAY PAVEMENT IMPROVEMENTS AS DETAILED IN THE PLANS.

POST-STAGE TRAFFIC
USE HIGHWAY STANDARD 701311 FOR TRAFFIC CONTROL.

POST-STAGE CONSTRUCTION
CONDUCT WORKSITE CLEANUP AND PLACE FINAL PAVEMENT MARKINGS.

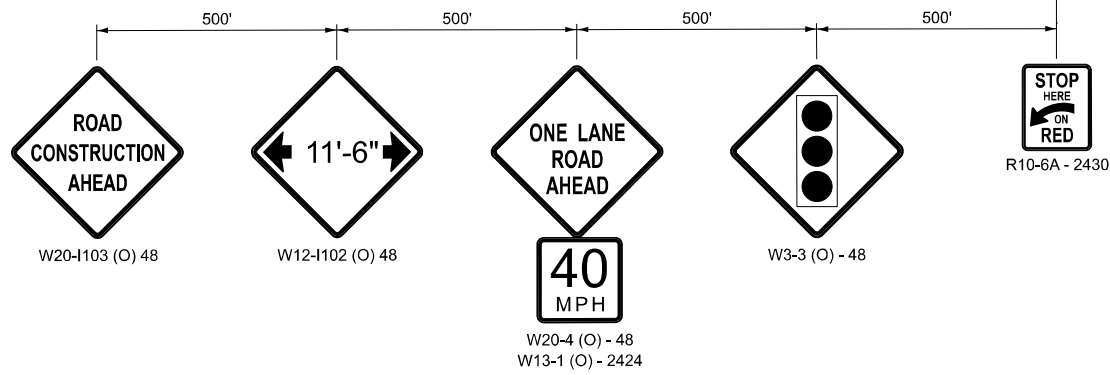
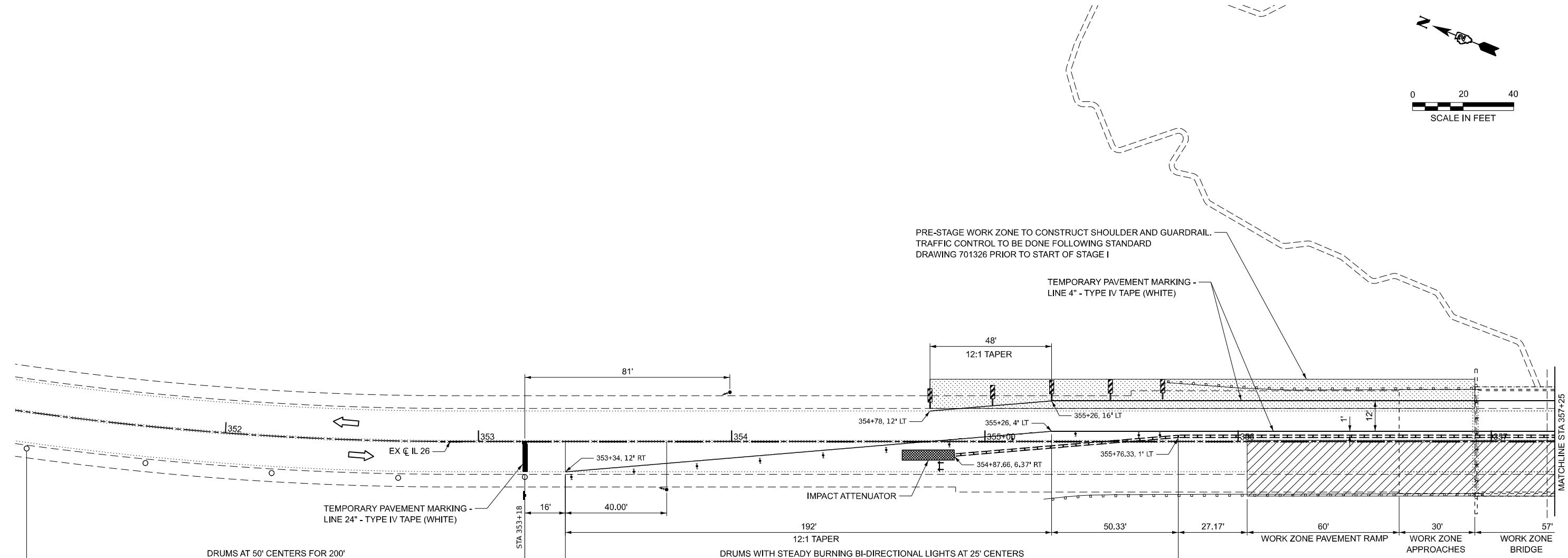
**STATE OF ILLINOIS
DEPARTMENT OF TRANSPORTATION**

**MAINTENANCE OF TRAFFIC TYPICAL SECTIONS AND NOTES
IL 26 OVER DRAINAGE DITCH**

SCALE: N.T.S. SHEET 1 OF 5 SHEETS STA. TO STA.

F.A.P. RTE.	SECTION	COUNTY	TOTAL SHEETS	SHEET NO.
316	(101BR-3)BDR	STEPHENSON	29	8
CONTRACT NO. 64T99				
ILLINOIS FED. AID PROJECT				

MODEL: Default
FILE NAME: C:\Users\jpush\OneDrive - QEI\OCDoc\Consult\Projects\2406_D2-Var\Var 210-017400-Work\WO-03410-CADD\Design\2684199_BHIF_BM401STAGE-1-1.dgn

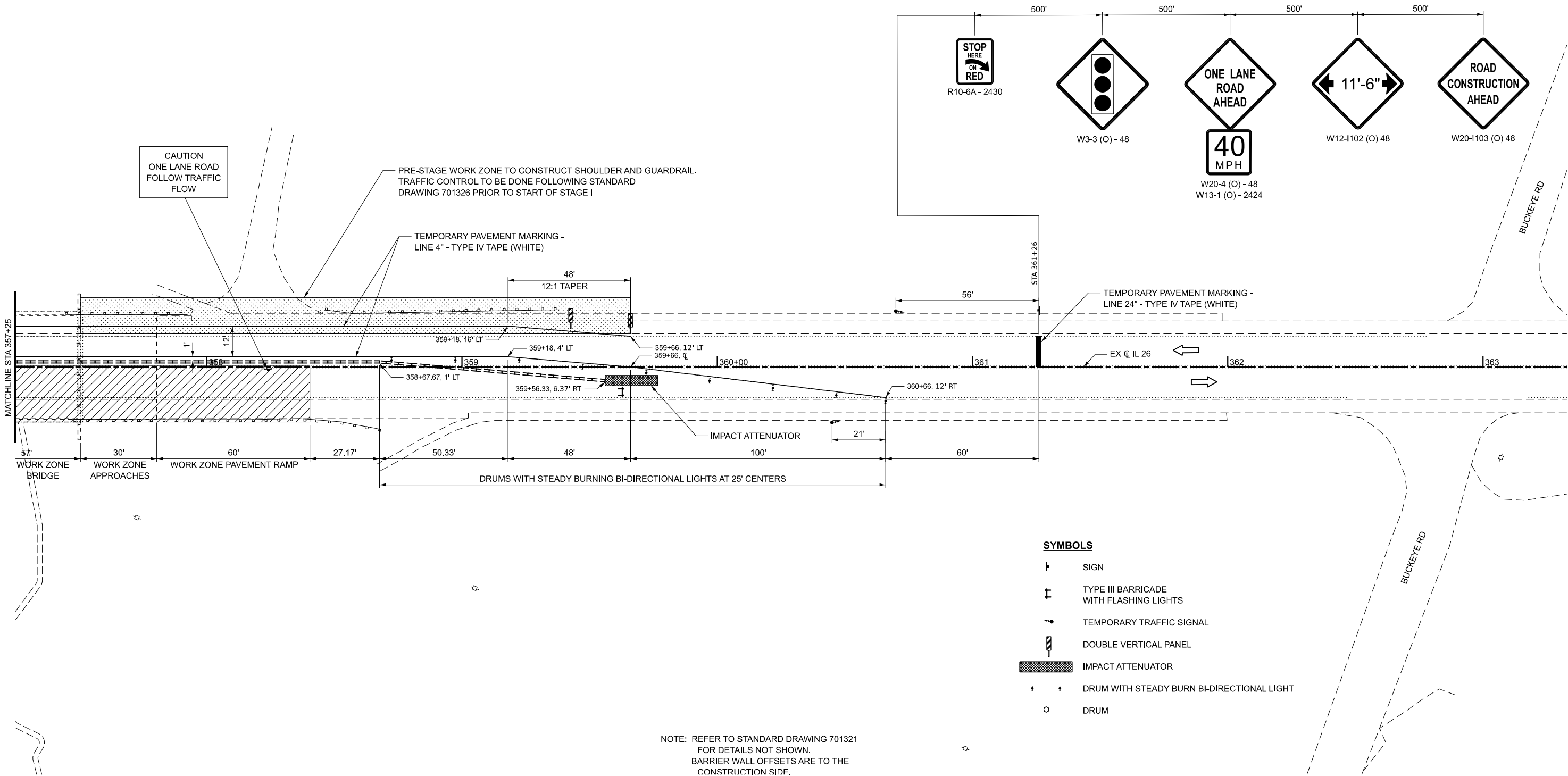
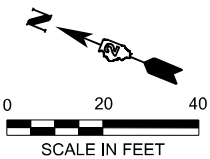


- SYMBOLS**
- SIGN
 - TYPE III BARRICADE
WITH FLASHING LIGHTS
 - TEMPORARY TRAFFIC SIGNAL
 - DOUBLE VERTICAL PANEL
 - IMPACT ATTENUATOR
 - DRUM WITH STEADY BURN BI-DIRECTIONAL LIGHT
 - DRUM

NOTE: REFER TO STANDARD DRAWING 701321
FOR DETAILS NOT SHOWN.
BARRIER WALL OFFSETS ARE TO THE
CONSTRUCTION SIDE.

	USER NAME = jpush	DESIGNED - JRP	REVISED -	STATE OF ILLINOIS DEPARTMENT OF TRANSPORTATION	MAINTENANCE OF TRAFFIC - STAGE 1 PLANS IL 26 OVER DRAINAGE DITCH			F.A.P. RTE.	SECTION	COUNTY	TOTAL SHEETS	SHEET NO.
		DRAWN - JRP	REVISED -					316	(101BR-3)BDR	STEPHENSON	29	9
		CHECKED - JRP	REVISED -					CONTRACT NO. 64T99				
	PLOT DATE = 2/8/2025	DATE - 03/25/2025	REVISED -		SCALE: 1" = 20'	SHEET 2	OF 5 SHEETS	STA.	TO STA.	ILLINOIS	FED. AID PROJECT	

MODEL: Default
FILE NAME: C:\Users\jpush\OneDrive - QEI\QCDocs\Consult\Projects\2406_D2\Var\var 210-017400-Work\WO-03410-CADD\Design\2684T99_SHT_MOT STAGE 1-2.dgn



NOTE: REFER TO STANDARD DRAWING 701321
FOR DETAILS NOT SHOWN.
BARRIER WALL OFFSETS ARE TO THE
CONSTRUCTION SIDE.

SYMBOLS

- SIGN
- TYPE III BARRICADE WITH FLASHING LIGHTS
- TEMPORARY TRAFFIC SIGNAL
- DOUBLE VERTICAL PANEL
- IMPACT ATTENUATOR
- DRUM WITH STEADY BURN BI-DIRECTIONAL LIGHT
- DRUM

STATE OF ILLINOIS
DEPARTMENT OF TRANSPORTATION

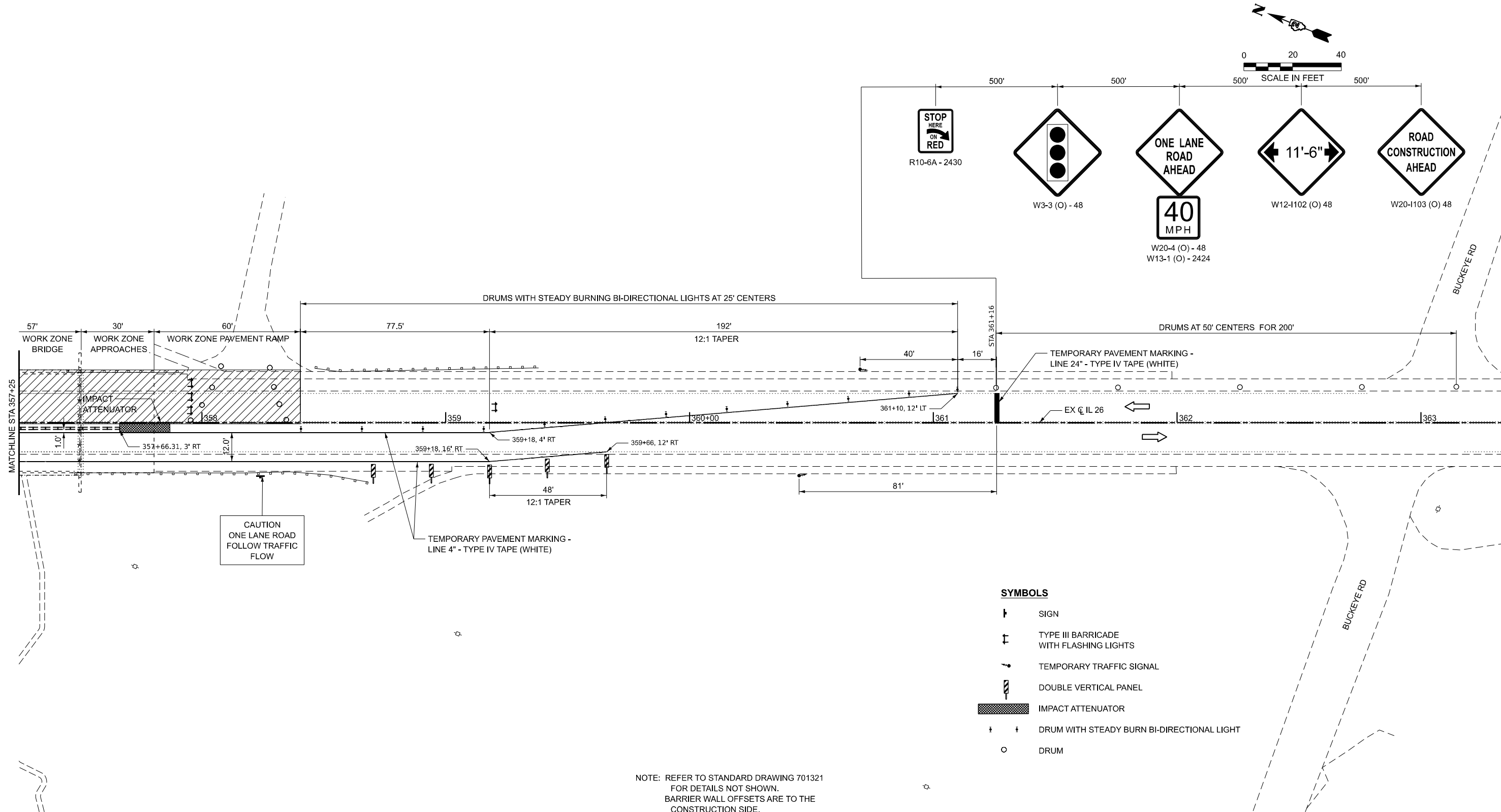
MAINTENANCE OF TRAFFIC - STAGE 1 PLANS
IL 26 OVER DRAINAGE DITCH

SCALE: 1" = 20' SHEET 3 OF 5 SHEETS STA. TO STA.

F.A.P. RTE.	SECTION	COUNTY	TOTAL SHEETS	SHEET NO.
316	(101BR-3)BDR	STEPHENSON	29	10
CONTRACT NO. 64T99				
ILLINOIS FED. AID PROJECT				

PLOT DATE = 2/8/2025	USER NAME = jpush	DESIGNED - JRP	REVISED -
		DRAWN - JRP	REVISED -
		CHECKED - JRP	REVISED -
	DATE - 03/25/2025		REVISED -

MODEL: Default
FILE NAME: C:\Users\jpush\OneDrive - QEI\QCDocs\Consult\Projects\2406_D2\Var\Var 210-017400-Work\WO-03410-CADD\Design\64T99_SHT_NOT STAGE2-2.dgn



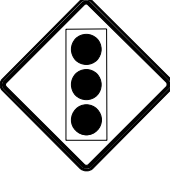
NOTE: REFER TO STANDARD DRAWING 701321
FOR DETAILS NOT SHOWN.
BARRIER WALL OFFSETS ARE TO THE
CONSTRUCTION SIDE.

SYMBOLS

- SIGN
- TYPE III BARRICADE WITH FLASHING LIGHTS
- TEMPORARY TRAFFIC SIGNAL
- DOUBLE VERTICAL PANEL
- IMPACT ATTENUATOR
- DRUM WITH STEADY BURN BI-DIRECTIONAL LIGHT
- DRUM



R10-6A - 2430



W3-3 (O) - 48



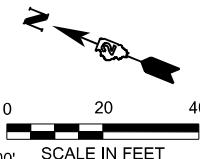
W20-4 (O) - 48
W13-1 (O) - 2424



W12-1102 (O) 48



W20-1103 (O) 48



0 20 40
SCALE IN FEET

F.A.P. RTE.	SECTION	COUNTY	TOTAL SHEETS	SHEET NO.
316	(101BR-3)BDR	STEPHENSON	29	12
CONTRACT NO. 64T99				
ILLINOIS FED. AID PROJECT				

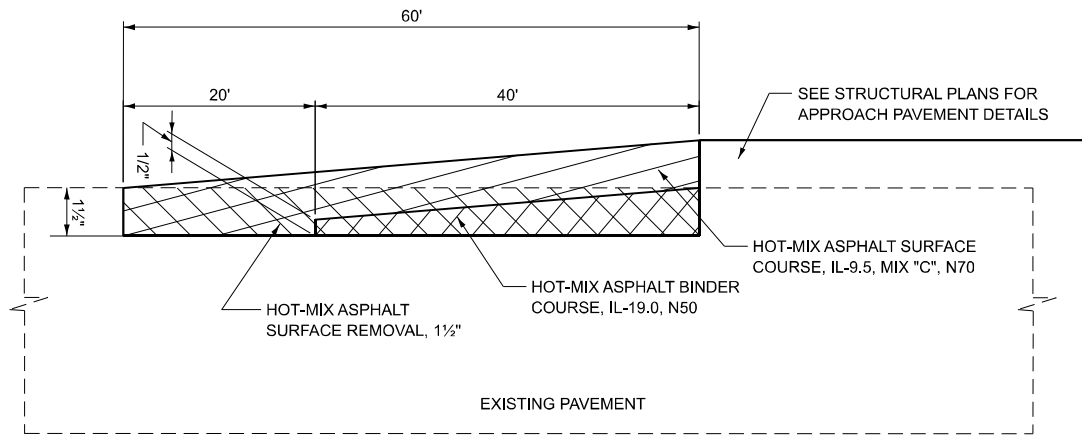
USER NAME	= jpush	DESIGNED -	JRP	REVISED -	
		DRAWN -	JRP	REVISED -	
		CHECKED -	JRP	REVISED -	
PLOT DATE	= 2/8/2025	DATE -	03/25/2025	REVISED -	

STATE OF ILLINOIS
DEPARTMENT OF TRANSPORTATION

MAINTENANCE OF TRAFFIC - STAGE 2 PLANS
IL 26 OVER DRAINAGE DITCH

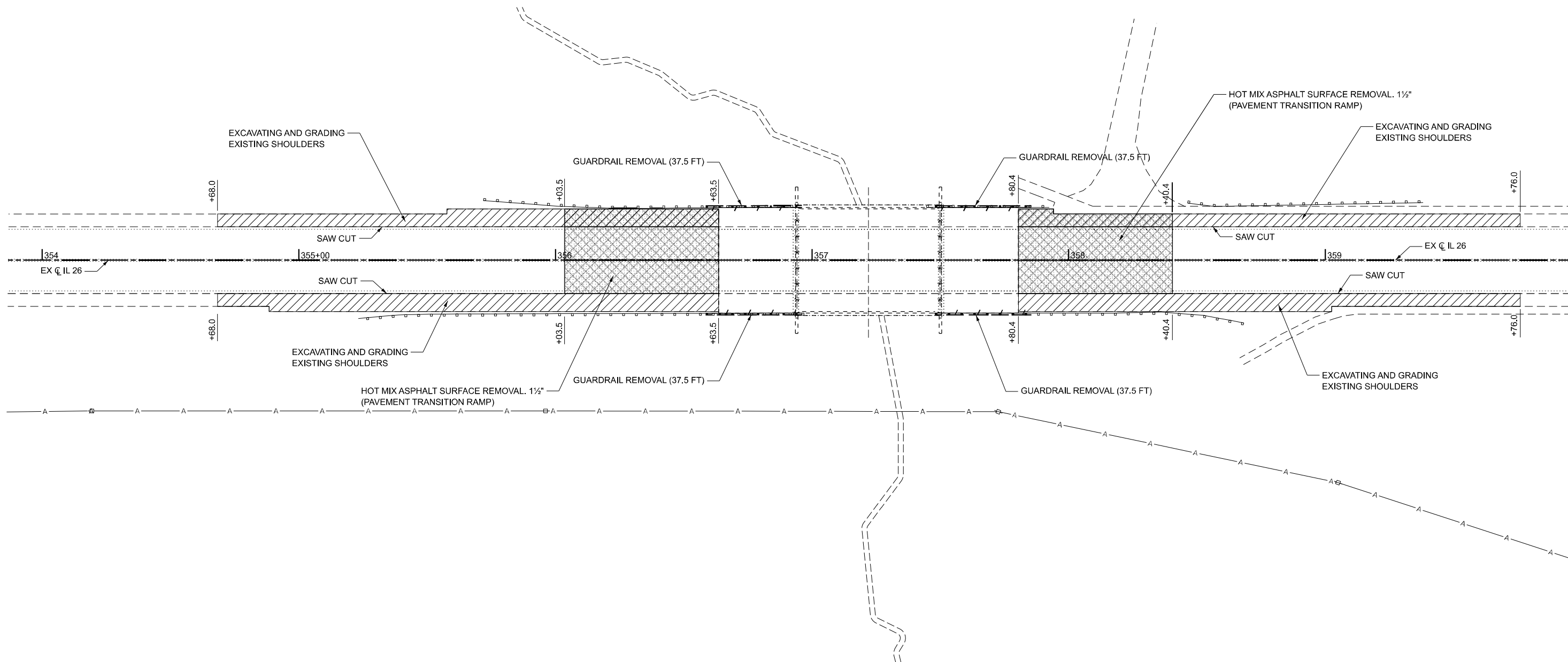
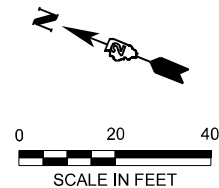
SCALE: 1" = 20' SHEET 5 OF 5 SHEETS STA. TO STA.

MODEL: Default
FILE NAME: C:\Users\jpush\OneDrive - QEI\QCDocs\Consult\Projects\2406_D2-Var\Var 210-017400-Work\WO-03410-CADD\Design\24064T99_BMR_BMR000-RemovalPlan1.dgn



PAVEMENT TRANSITION RAMP DETAIL

STA. 112+08.33 TO STA. 112+68.33
STA. 114+07.18 TO STA. 114+67.18



PLOT DATE = 2/8/2025	USER NAME = jpush	DESIGNED - JRP	REVISED -
		DRAWN - JRP	REVISED -
		CHECKED - JRP	REVISED -
	DATE - 03/25/2025		REVISED -

STATE OF ILLINOIS
DEPARTMENT OF TRANSPORTATION

REMOVAL PLAN
IL 26 OVER DRAINAGE DITCH

SCALE: 1"=20' SHEET 1 OF 1 SHEETS STA. TO STA.

F.A.P. RTE.	SECTION	COUNTY	TOTAL SHEETS	SHEET NO.
316	(101BR-3)BDR	STEPHENSON	29	13
CONTRACT NO. 64T99				
ILLINOIS FED. AID PROJECT				

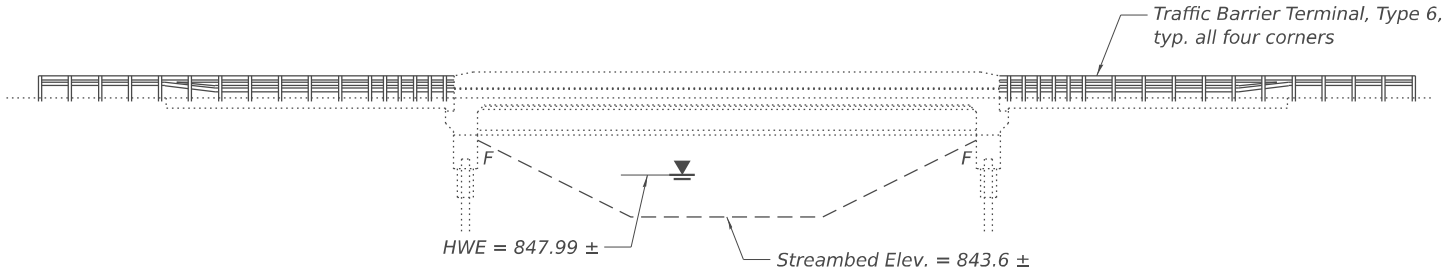
F.A.P. RTE.	SECTION	COUNTY	TOTAL SHEETS	SHEET NO.
316	(101BR-3)BDR	STEPHENSON	29	14
		CONTRACT NO. 64T99		
ILLINOIS		FED. AID PROJECT		

Benchmark: None.

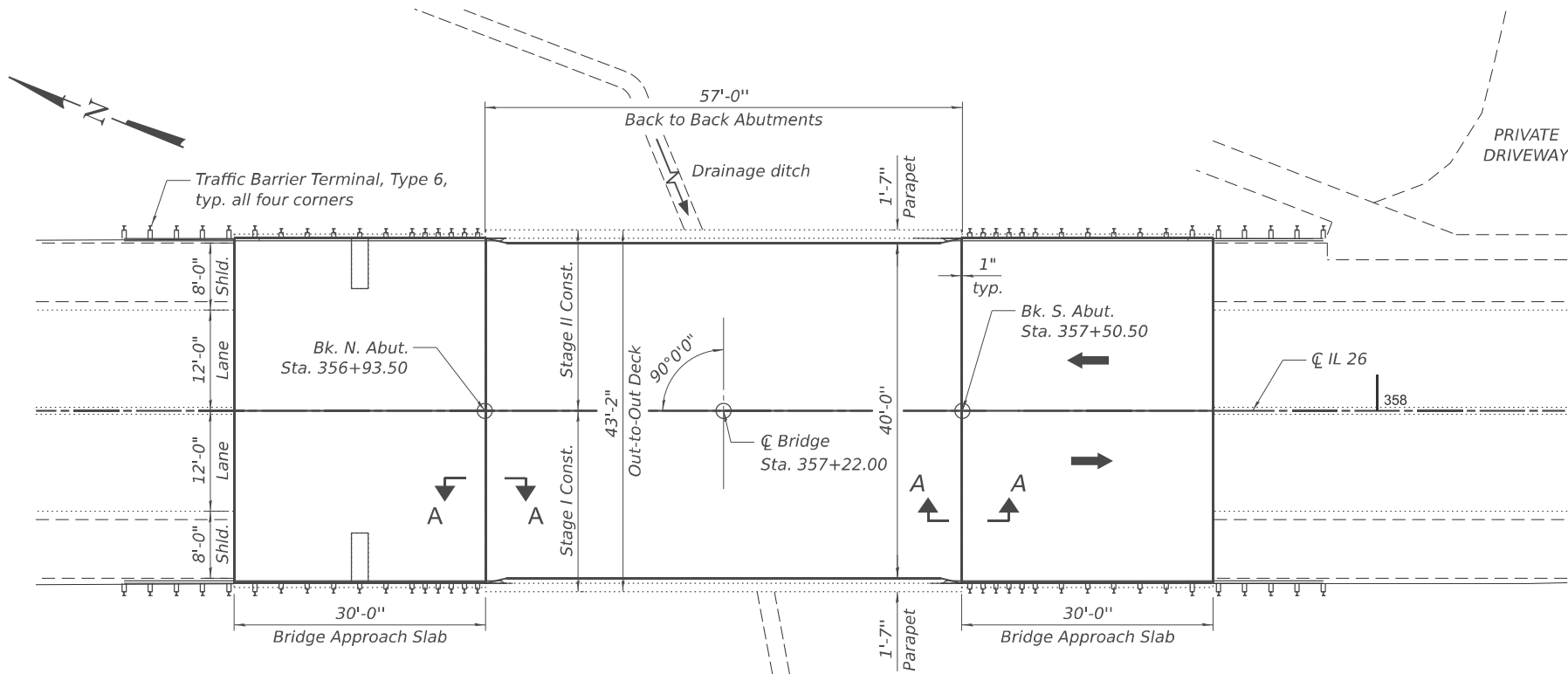
Existing Structure: SN 089-0072 was originally built in 1995 as F.A.P. Route 316, Section 101 BR-3 at Sta 357+22. The existing structure carries IL 26 over Drainage Ditch and is a single span 36" PPC I-beam bridge with a 7½" concrete deck. The substructure consists of integral abutments founded on Steel HP piles. The back-to-back abutment length of the bridge is 57'-0", the out-to-out width of the structure is 43'-2", and the skew is 90°.

One lane of traffic in alternating directions will be maintained utilizing temporary traffic signals and staged construction.

No salvage.



ELEVATION

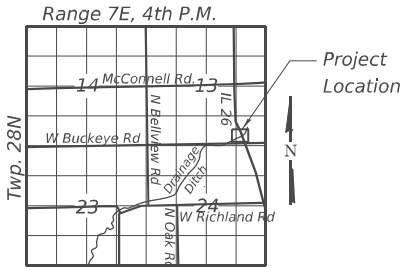


PLAN

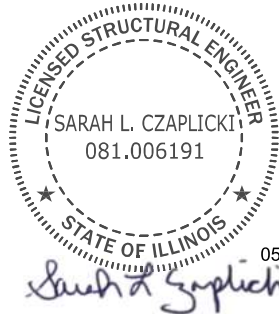
Note: See Sheet 4 of 5 for Section A-A.

TOTAL BILL OF MATERIAL

ITEM	UNIT	TOTAL
Protective Coat	Sq. Yd.	588
Epoxy Crack Injection	Foot	16
Frames and Grates to be Adjusted	Each	2
Bridge Deck Grooving (Longitudinal)	Sq. Yd.	312
Bridge Curb or Hubguard Repair	Foot	10
Bridge Deck Latex Concrete Overlay, 2½"	Sq. Yd.	528
Cleaning Existing Inlets	Each	2
Bridge Deck Scarification ¾"	Sq. Yd.	528
Deck Slab Repair (Full Depth, Type I)	Sq. Yd.	1
Diamond Grinding (Bridge Section)	Sq. Yd.	476



LOCATION SKETCH



Sarah L. Czaplicki, PE, SE
Expires: November 30, 2026

SCOPE OF WORK

- Scarify ¾" from the existing bridge deck and approach slabs.
- Perform full depth deck slab repairs where required after scarification and corresponding deck slab survey.
- Complete areas of Epoxy Crack Injection and Bridge Curb Repair.
- Adjust drainage inlets in approach slab.
- Place 2½" Latex Concrete Overlay on bridge deck and approach slabs.
- Perform ¼" Diamond Grinding (Bridge Section) and Bridge Deck Grooving (Longitudinal) on bridge deck and approach slabs.
- Apply Protective Coat to the new concrete overlay and existing parapets and approach curbs.

GENERAL NOTES

- Plan dimensions and details relative to the existing structure have been taken from existing plans are subject to nominal constructions variations. The contractor shall field verify existing dimensions and details affecting new construction and make necessary approved adjustments prior to construction or ordering of materials. Such variations shall not be cause for additional compensation for a change in scope of the work, however, the contractor will be paid for the quantity actually furnished at the unit price bid for the work.

INDEX OF SHEETS

- General Plan and Elevation
- Stage Construction Details
- Temporary Concrete Barrier
- Deck and Approach Repair Plan
- Drainage Inlet Adjustment Details

DESIGN SPECIFICATIONS

2002 AASHTO Standard Specifications
for Highway Bridges

LOADING HS 20-44

DESIGN STRESSES

FIELD UNITS (NEW CONSTRUCTION)

f_c = 4,000 psi
f_y = 60,000 psi (Reinforcement)

FIELD UNITS (EXISTING CONSTRUCTION)

f_c = 3,500 psi
f_y = 60,000 psi (Reinforcement)

PRECAST PRESTRESSED UNITS (EXISTING CONSTRUCTION)

f_c = 6,000 psi
f_{ci} = 5,000 psi
f_s = 270,000 psi, ½"Ø strands
f_{si} = 201,960 psi, ½"Ø strands

GENERAL PLAN AND ELEVATION

IL 26 OVER DRAINAGE DITCH

FAP 316 (IL 26) SEC 101 BR-3

STEPHENSON COUNTY

STATION 357+22.00

STRUCTURE NO. 089-0072

USER NAME	=	DESIGNED	-	KLK	REVISED	-
		CHECKED	-	GJH	REVISED	-
PLOT SCALE	=	DRAWN	-	KLK	REVISED	-
PLOT DATE	=	CHECKED	-	GJH	REVISED	-

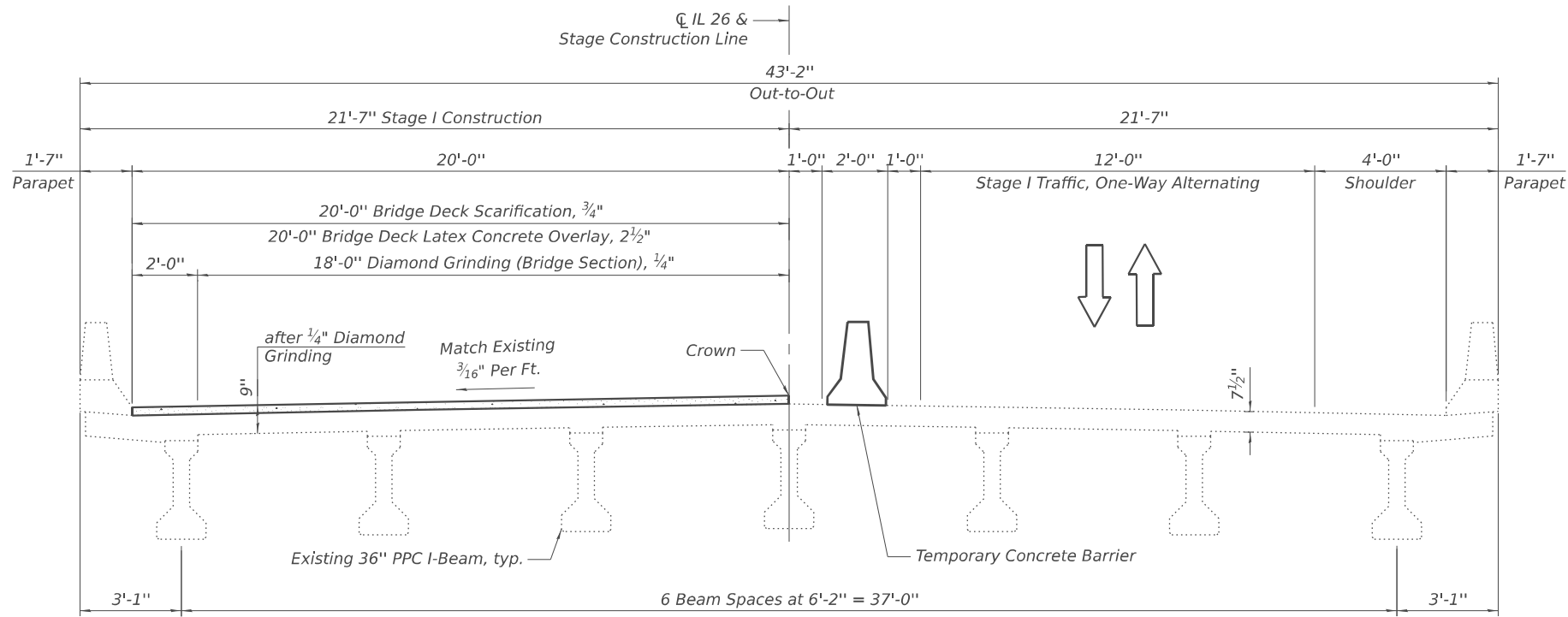
STATE OF ILLINOIS DEPARTMENT OF TRANSPORTATION

GENERAL PLAN AND ELEVATION STRUCTURE NO. 089-0072

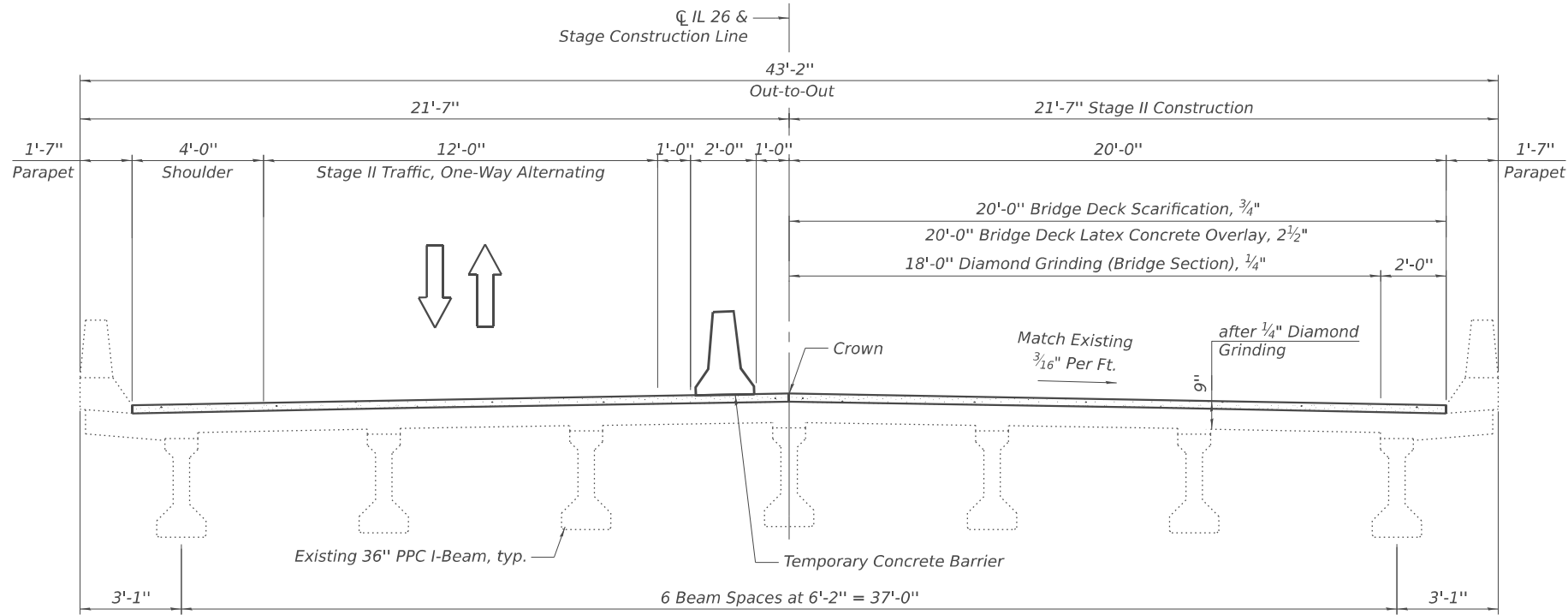
SHEET 1 OF 5 SHEETS

F.A.P. RTE.	SECTION	TOTAL SHEETS	SHEET NO.
316	101BR-3	15	29
		CONTRACT NO.	64T99
		ILLINOIS	FED. AID PROJECT

MODEL: Stage I Cross Section
FILE NAME: C:\Users\Katelyn\KopparelOneDrive - Czaplicki Lopez, PLLC\24023 IDOT PTB 210-017 WO3 IL26 over Drainage Ditch Ph II - Quandel - Documents\CADD\089\072-44T95-02_Stage_Const_Details.dgn



STAGE I CONSTRUCTION
(Looking North)



STAGE II CONSTRUCTION
(Looking North)

STATE OF ILLINOIS
DEPARTMENT OF TRANSPORTATION

STAGE CONSTRUCTION DETAILS
STRUCTURE NO. 089-0072

SHEET 2 OF 5 SHEETS

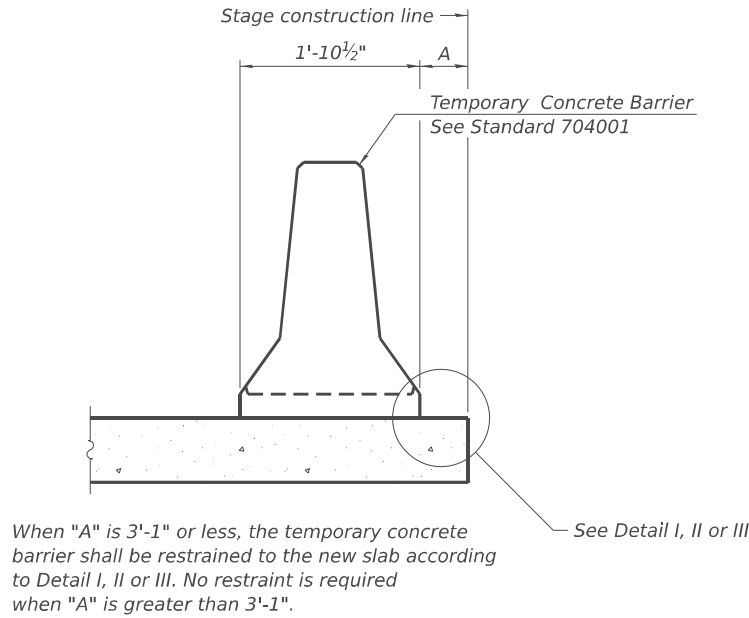
F.A.P. RTE.	SECTION		TOTAL SHEETS	SHEET NO.
316	101BR-3	STEPHENSON	16	29
			CONTRACT NO. 64T99	
		ILLINOIS	FED. AID PROJECT	

CZAPLUCKI LOPEZ, PLLC
201 KENMARE DRIVE
BURR RIDGE, ILLINOIS 60527
630-915-8861
DESIGN FIRM NO: 184,008135

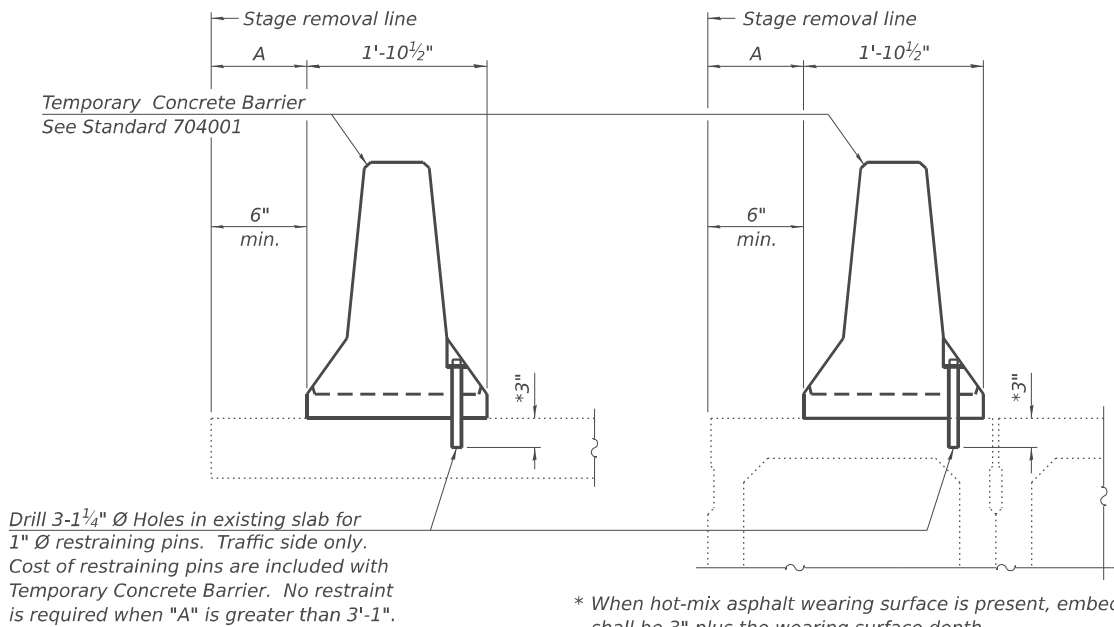
USER NAME	=	DESIGNED	-	KLK	REVISED	-
		CHECKED	-	GJH	REVISED	-
PLOT SCALE	=	DRAWN	-	KLK	REVISED	-
PLOT DATE	=	CHECKED	-	GJH	REVISED	-

5/12/2025

MODEL: Default
FILE NAME: C:\Users\Katelyn\KcompareOneDrive - Czaplucki Lopez, P.LLC\24023 IDOT PTB 210-017 W03 IL26 over Drainage Ditch Ph II - Quandel - Documents\CADD\0890072-44T95-03_Temp_Conc_Barrier.dgn
5/12/2025

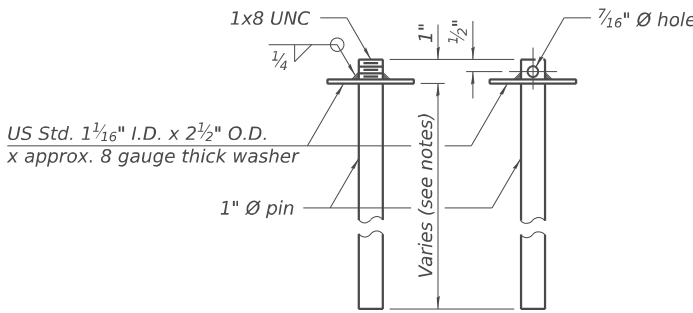


NEW SLAB OR NEW DECK BEAM



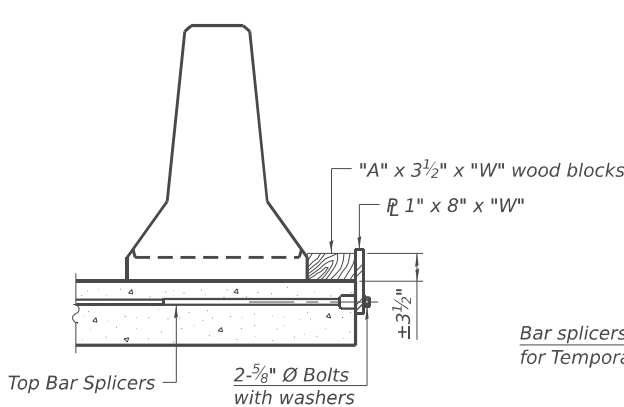
EXISTING SLAB

EXISTING DECK BEAM

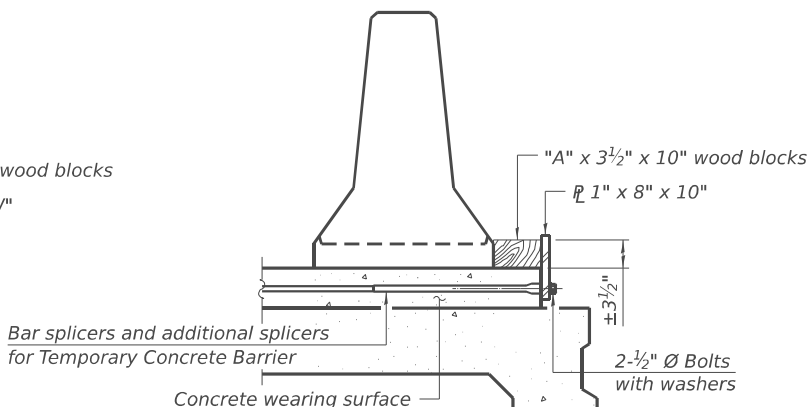


RESTRAINING PIN

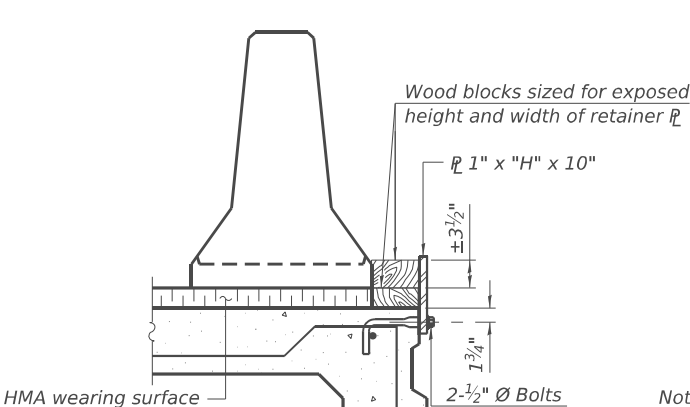
SECTIONS THRU SLAB OR DECK BEAM



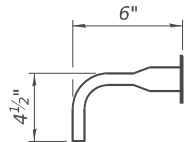
DETAIL I



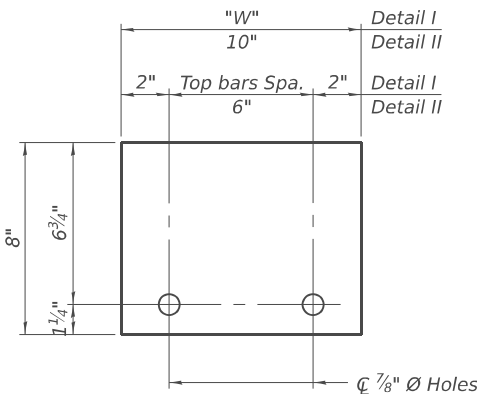
DETAIL II



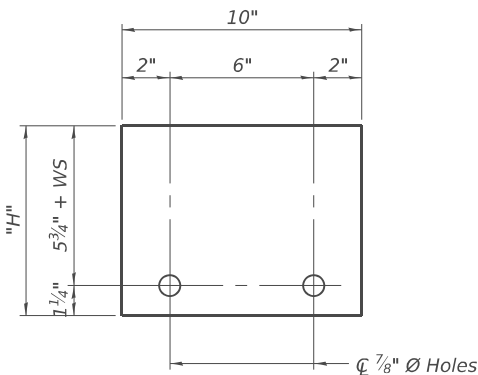
DETAIL III



BAR SPLICER FOR #4 BAR - DETAIL III



STEEL RETAINER 1" x 8" x "W"
(Detail I and II)



STEEL RETAINER 1" x "H" x 10"
(Detail III)

Notes:
Cost of retainer assembly is included with Temporary Concrete Barrier.
A retainer assembly shall be located at the approximate C of each temporary concrete barrier.
The retainer plate shall not be removed until the concrete on the adjacent stage is ready to be poured. For Detail III applications the retainer plate shall not be removed until just prior to placing the adjacent beam.
When the 'A' dimension is less than 1 1/2", the wood block shall be omitted and the barrier shall be placed in direct contact with the steel retainer plate. For deck beam applications the minimum required 'A' distance is 6" to accommodate the shear key clamping device.

Detail I - Installation for a new bridge deck or bridge slab.

Detail II - Installation for a new deck beam with an initial concrete wearing surface. Additional bar splicers shall be provided at 6'-0" centers and paired with the bar splicers of the concrete wearing surface reinforcement to accommodate the installation of the retainer assemblies. The cost of the additional bar splicers is included with the concrete wearing surface.

Detail III - Installation for a new deck beam with no initial wearing surface or with an initial hot-mix asphalt (HMA) wearing surface present. The deck beam directly beneath the temporary concrete barrier shall be fabricated with bar splicer inserts in the side of the beam, as detailed, to accommodate the installation of the retainer assemblies. A pair of bar splicers, 6" apart, shall be placed at 6'-0" centers along the length of the beam. The cost of the bar splicers is included with the deck beam.

RAILING CRITERIA

NCHRP 350 Test Level	3
Railing Weight (plf)	440

R-27

5-15-2023

STATE OF ILLINOIS
DEPARTMENT OF TRANSPORTATION

TEMPORARY CONCRETE BARRIER
STRUCTURE NO. 089-0072

SHEET 3 OF 5 SHEETS

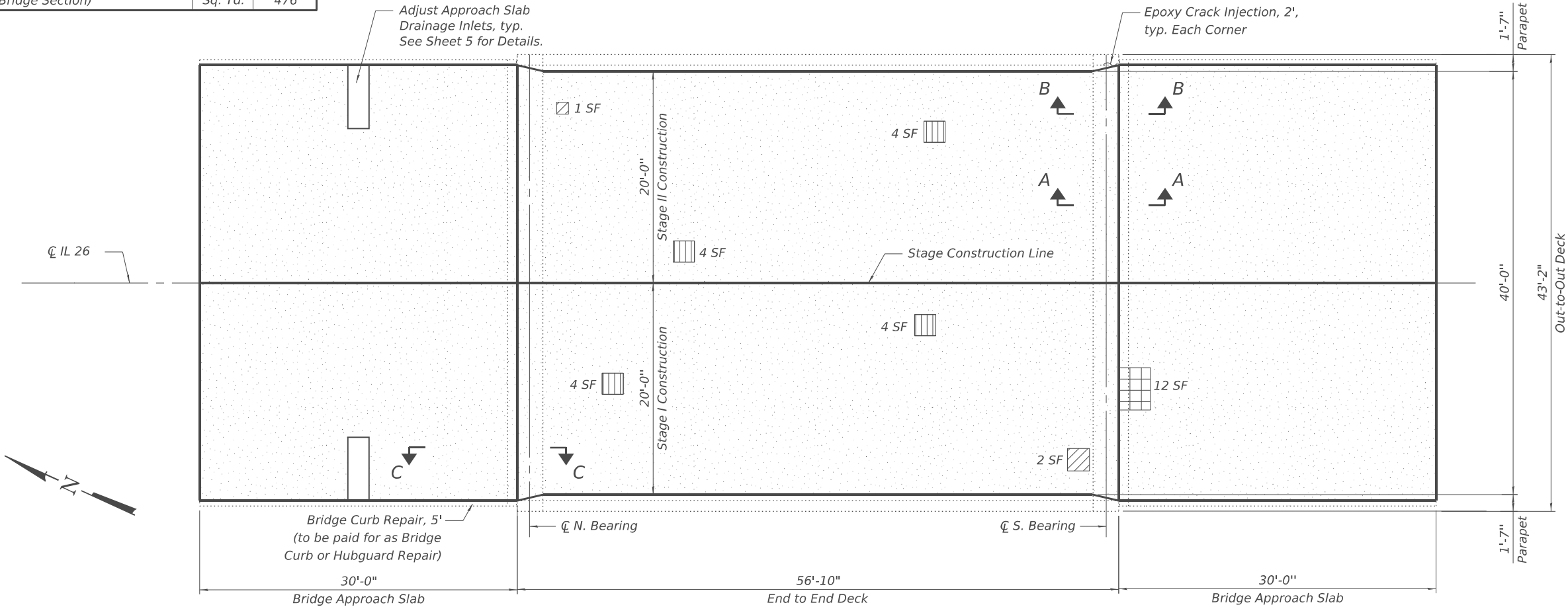
F.A.P. RTE.	SECTION	TOTAL SHEETS	SHEET NO.
316	101BR-3	17	29
CONTRACT NO.		64T99	
ILLINOIS		FED. AID PROJECT	

BILL OF MATERIAL

Item	Unit	Total
Protective Coat	Sq. Yd.	588
Epoxy Crack Injection	Foot	16
Bridge Deck Grooving (Longitudinal)	Sq. Yd.	312
Bridge Curb or Hubguard Repair	Foot	10
Bridge Deck Latex Concrete Overlay 2½"	Sq. Yd.	528
Bridge Deck Scarification ¾"	Sq. Yd.	528
Deck Slab Repair (Full Depth, Type I)	Sq. Yd.	1
Diamond Grinding (Bridge Section)	Sq. Yd.	476

Notes:

1. Protective Coat shall be applied to the top and inside faces of the existing parapets, approach curbs, and new latex concrete overlays.
2. Up to ¼ inch to be ground off the bridge deck and the bridge approach slabs.
3. Quantity and limits of repairs shown are estimated from a field survey. A nominal amount of quantities for Epoxy Crack Injection, Bridge Curb or Hubguard Repair, and Deck Slab Repair (Full Depth, Type I) have been provided to account for repairs not shown. Actual limits shall be determined in the field by the Engineer and noted in the As-Built Plans.
4. Areas of Approach Slab Repair (Partial Depth) are provided for information only and shall be included in the cost of Bridge Deck Latex Concrete Overlay, 2½".
5. Areas of Deck Slab Repair (Partial) are provided for information only and shall be included in the cost of Bridge Deck Latex Concrete Overlay, 2½".



PLAN

LEGEND:

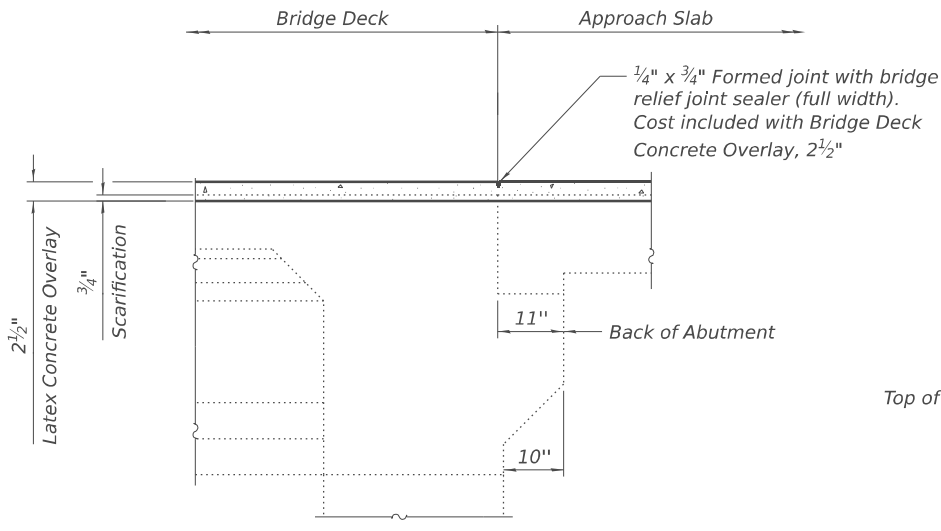
- Bridge Deck Scarification ¾"

Bridge Deck Latex Concrete Overlay 2½"

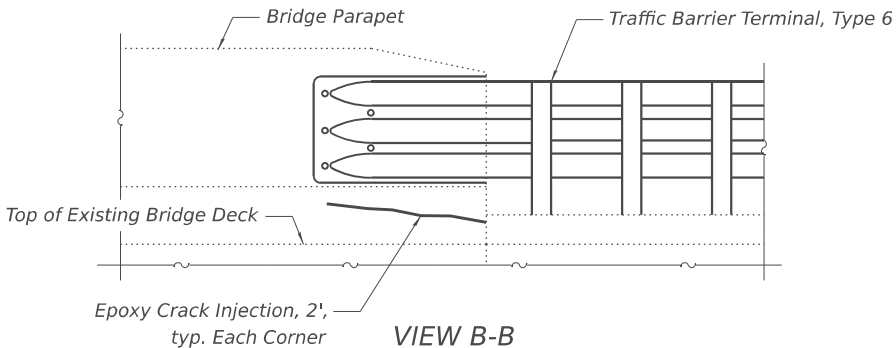
Diamond Grinding (Bridge Section) ¼"
- Deck Slab Repair (Partial) - See Note 5

Deck Slab Repair (Full Depth, Type I)

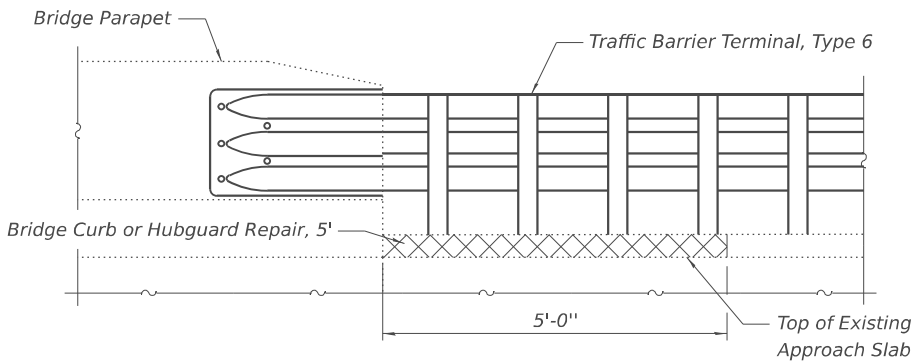
Approach Slab Repair (Partial Depth) - See Note 4



SECTION A-A



VIEW B-B



VIEW C-C

MODEL: Overlay and Repair Plan
FILE NAME: C:\Users\Katelyn\KcompareOneDrive - Czaplicki Lopez, PLLC\24223 IDOT PTB 210-017 WO3 IL26 over Drainage Ditch Ph II - Quandel - Documents\CADD\089\072-44195-04_Deck&Appr_Repair_Plan.dgn
5/12/2025



USER NAME =	DESIGNED - KLK	REVISED -
	CHECKED - GJH	REVISED -
PLOT SCALE =	DRAWN - KLK	REVISED -
PLOT DATE =	CHECKED - GJH	REVISED -

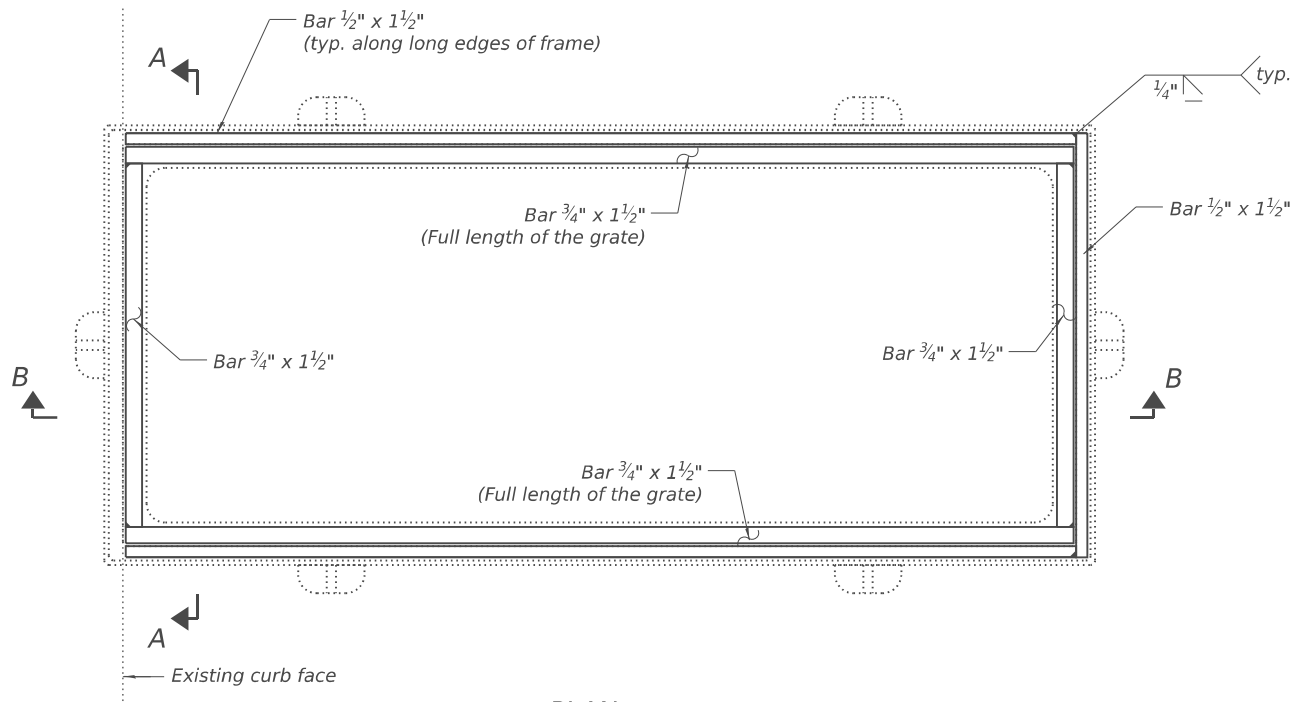
STATE OF ILLINOIS
DEPARTMENT OF TRANSPORTATION

DECK AND APPROACH REPAIR PLAN
STRUCTURE NO. 089-0072

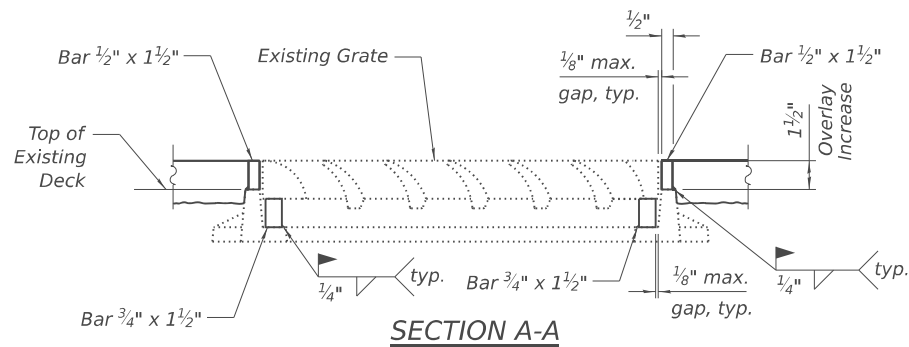
SHEET 4 OF 5 SHEETS

F.A.P. RTE.	SECTION	COUNTY	TOTAL SHEETS	SHEET NO.
316	101BR-3	STEPHENSON	18	29
		CONTRACT NO. 64T99		
ILLINOIS		FED. AID PROJECT		

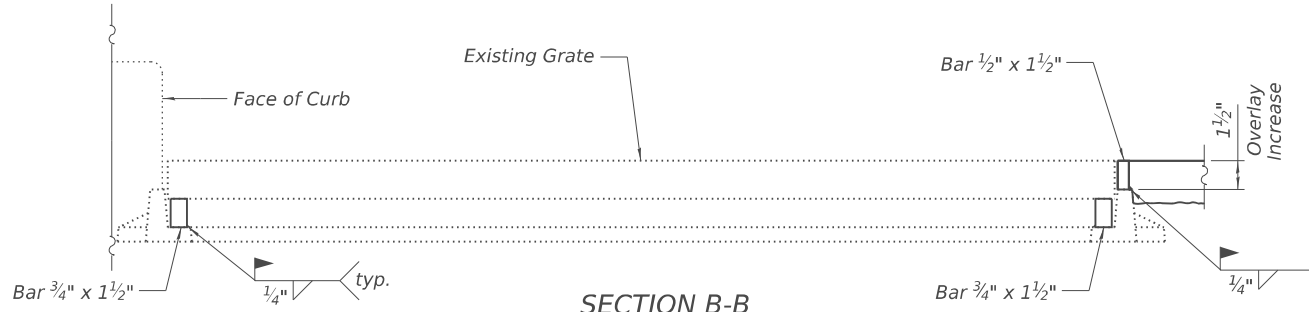
MODEL: Overlay and Repair Plan
FILE NAME: C:\Users\Katelyn\KcompareOneDrive - Czaplicki Lopez, PLLC\24223 IDOT PTB 210-017 WO3 IL26 over Drainage Ditch Ph II - Quandel - Documents\CADD\089\072-44795-05_Drainage_Inlet_Adj_Dtls.dgn
5/12/2025



PLAN



SECTION A-A



SECTION B-B



Listed as "Type D Inlet Box, Hwy Std. 2443-2, typ." on the existing plans from 1993.

PHOTO OF EXISTING SHOULDER INLET
ALONG CURB ON NORTH APPROACHES

Notes:
Existing inlet grates shall be adjusted so that the top of the existing grate is flush with the top of the proposed bridge overlay.
Proposed structural steel for adjusting the inlet grates shall conform to AASHTO Classification M-270 Gr. 36. All proposed components adjusting the inlet grates shall be hot dipped galvanized.
The Contractor shall ensure that no damage is done to the existing grates to be reused.
Shop plans for the proposed inlet adjustment ring shall be submitted to the Engineer for approval prior to fabrication.
See existing inlet plans for details and dimensions not shown. The Contractor shall field verify the type of inlet present and the inlet dimensions.
Galvanizing for field welded areas shall be repaired per ASTM A 780.
Clean existing inlets.
Cost of all labor and materials necessary to remove existing grates, furnish and install inlet adjustment ring, and reinstalling the grates is included in the cost per unit each for Frame and Grates to be Adjusted.

BILL OF MATERIAL

Item	Unit	Total
Frames and Grates to be Adjusted	Each	2
Cleaning Existing Inlets	Each	2



CZAPLUCKI LOPEZ, PLLC
201 KENMARE DRIVE
BURR RIDGE, ILLINOIS 60527
630-915-8861
DESIGN FIRM NO: 184,008135

USER NAME	=	DESIGNED - KLK	REVISED -
CHECKED	- GJH	REVISED -	
PLOT SCALE	=	DRAWN - KLK	REVISED -
PLOT DATE	=	CHECKED - GJH	REVISED -

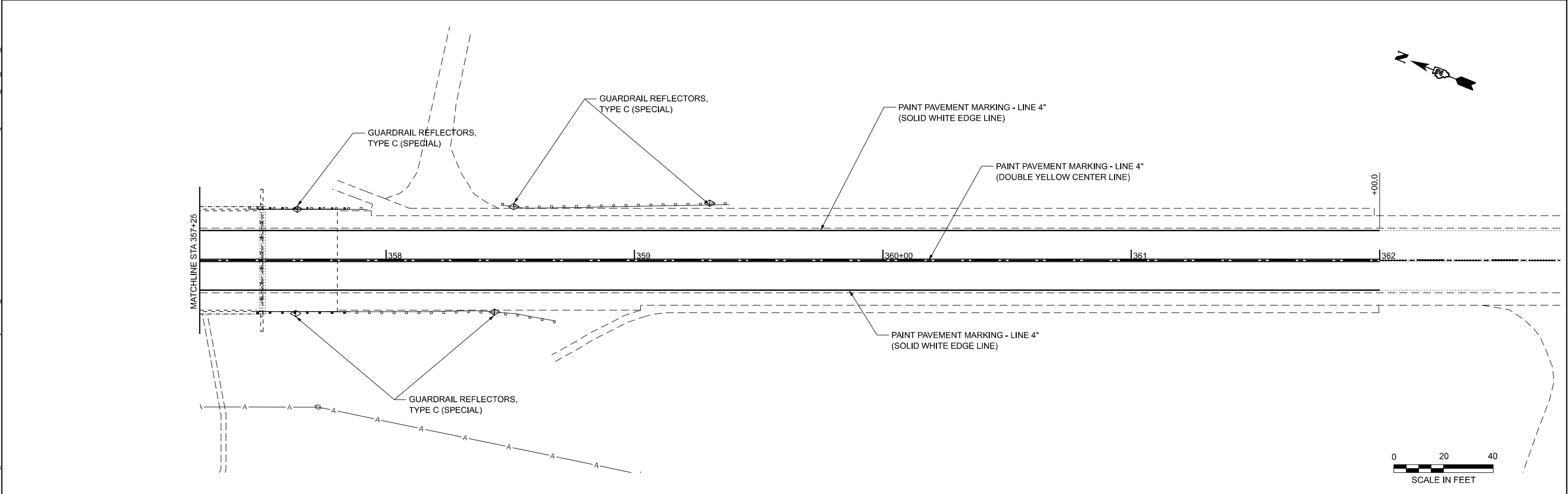
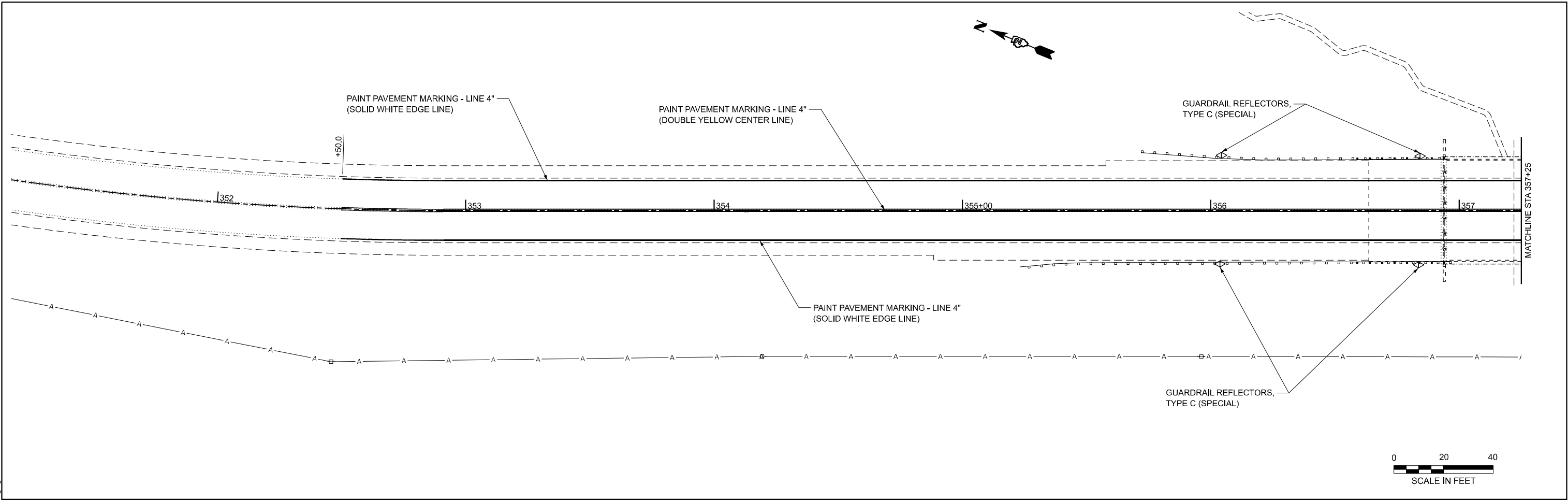
STATE OF ILLINOIS
DEPARTMENT OF TRANSPORTATION

DRAINAGE INLET ADJUSTMENT DETAILS
STRUCTURE NO. 089-0072

SHEET 5 OF 5 SHEETS

F.A.P. RTE.	SECTION		TOTAL SHEETS	SHEET NO.
316	101BR-3	STEPHENSON	19	29
		CONTRACT NO.	64T99	
		ILLINOIS	FED. AID PROJECT	

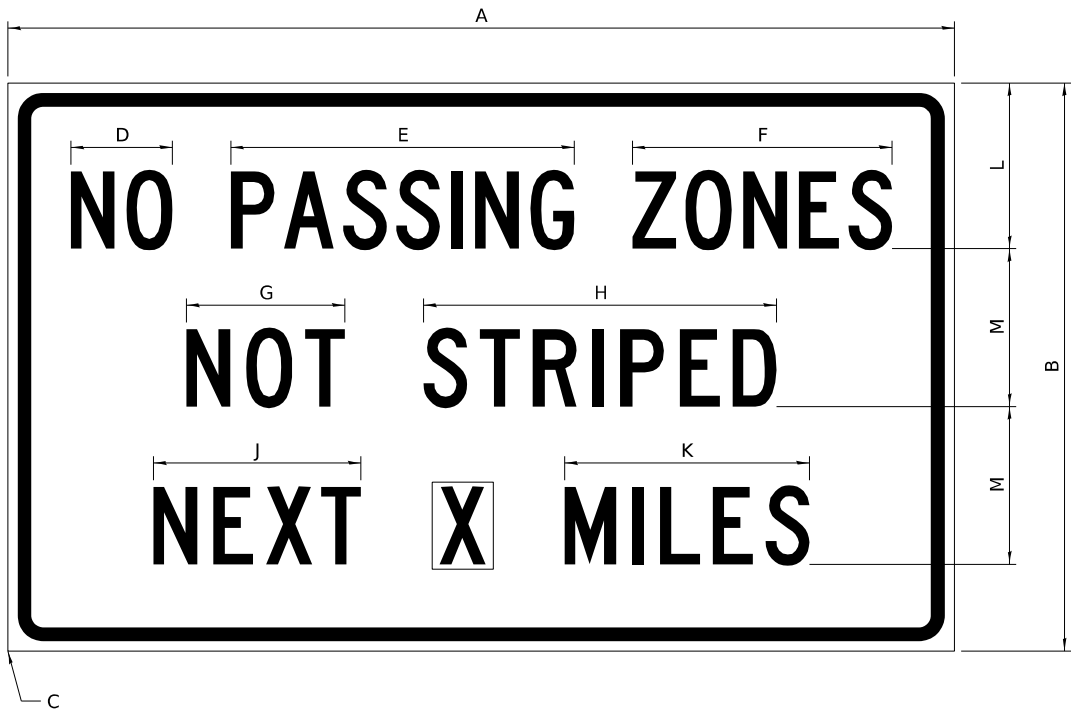
MODEL: Default
FILE NAME: C:\Users\jpush\OneDrive - QEI\QCDocs\Consult\Projects\2406_D2-Var\var 210-017400-Work\WO-03410-CADD\Design\64T99_SHT_ROAD_Pavement Marking.dgn



	USER NAME = jpush	DESIGNED - JRP	REVISED -	STATE OF ILLINOIS DEPARTMENT OF TRANSPORTATION	PAVEMENT MARKING PLAN IL 26 OVER DRAINAGE DITCH				F.A.P. RTE.	SECTION	COUNTY	TOTAL SHEETS	SHEET NO.
		DRAWN - JRP	REVISED -						316	(101BR-3)BDR	STEPHENSON	29	20
		CHECKED - JRP	REVISED -		CONTRACT NO. 64T99								
	PLOT DATE = 2/8/2025	DATE - 03/25/2025	REVISED -		SCALE: 1"=20'	SHEET 1	OF 1 SHEETS	STA.	TO STA.	ILLINOIS	FED. AID PROJECT		

WORK ZONE SIGN DETAILS

ILLINOIS STANDARD G20-I100



COLOR LEGEND AND BORDER BACKGROUND BLACK ORANGE NON-REFLECTORIZED REFLECTORIZED

SIGN SIZE	DIMENSIONS											
	A	B	C	D	E	F	G	H	J	K	L	M
60 x 36	60.00	36.00	2.25	6.4	21.80	16.40	10.00	22.40	13.20	15.50	10.50	10.00

SIGN SIZE	SERIES BY LINE			MARGIN	BORDER
	1	2	3		
60 x 36	5C	5C	5C	0.625	0.875

Sign not to scale

GENERAL NOTES

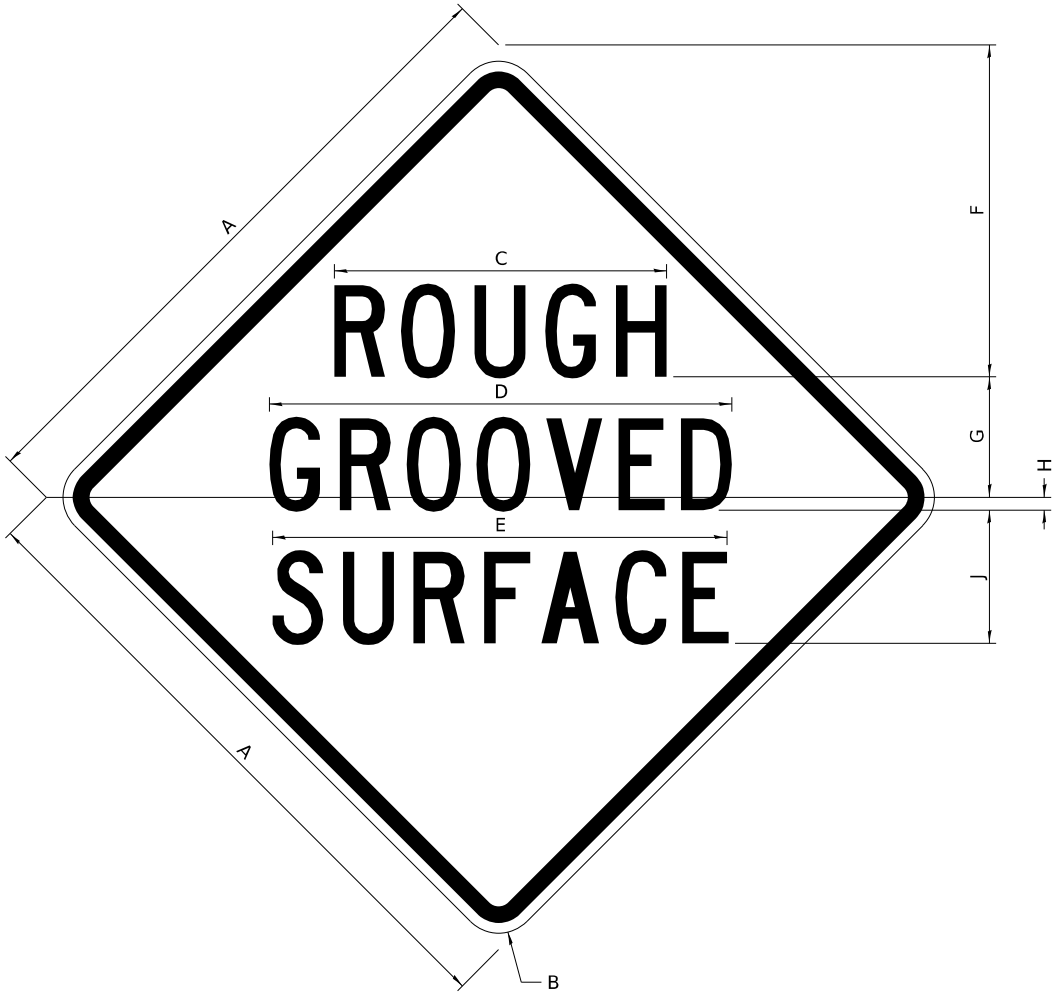
All work to furnish and install these signs shall be included in the cost of the specified traffic control standards and shall not be paid separately.

All Illinois Standard signs shall conform to the latest edition of the "Illinois Standard Highway Signs Book" in effect on the date of invitation for bids.

Signs shall meet the applicable portions of Sections 701 and 720 of the Standard Specifications.

All dimensions are in inches unless otherwise noted.

ILLINOIS STANDARD W8-I107



COLOR LEGEND AND BORDER BACKGROUND BLACK ORANGE NON-REFLECTORIZED REFLECTORIZED

SIGN SIZE	DIMENSIONS								
	A	B	C	D	E	F	G	H	J
48 x 48	48.00	3.00	25.00	34.80	34.20	24.94	9.00	1.00	10.00

SIGN SIZE	SERIES BY LINE			MARGIN	BORDER
	1	2	3		
48 x 48	7C	7C	7C	1.250	0.750

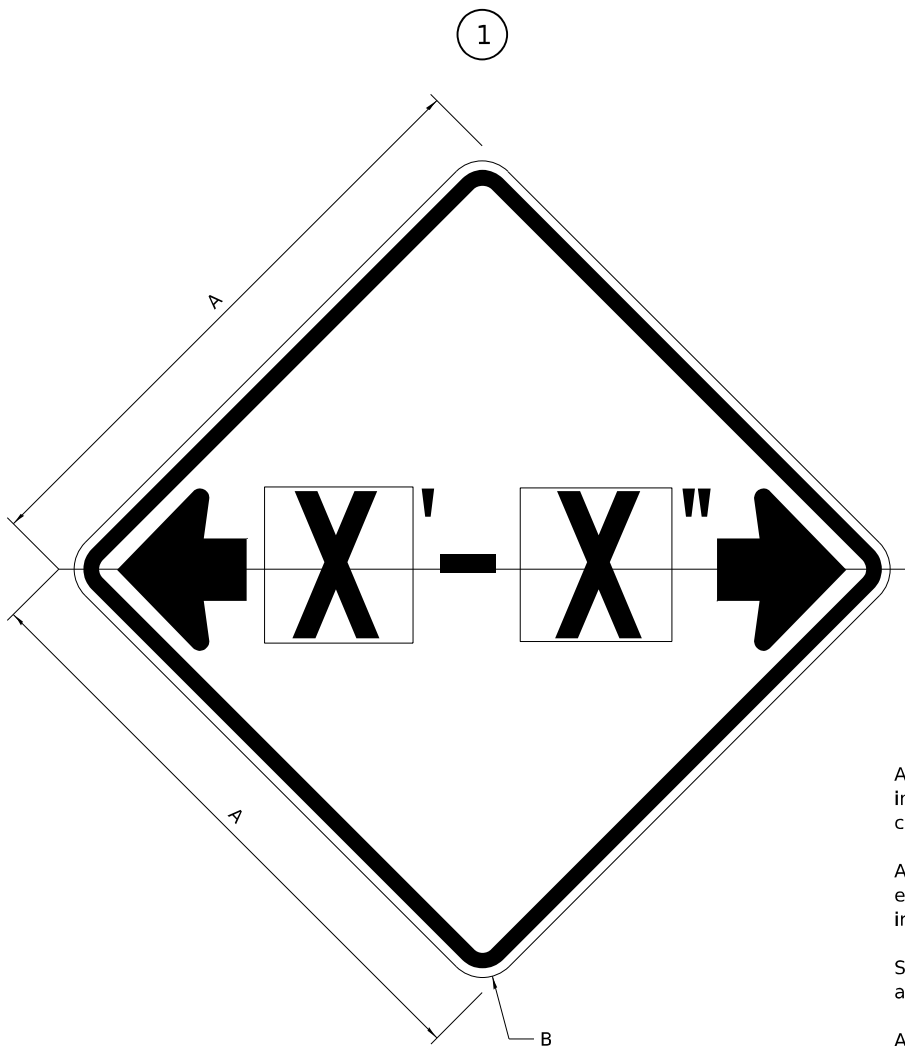
Sign not to scale

MODEL: Default
FILE NAME: C:\Users\jpush\OneDrive - QEI\Documents\Consult\Projects\2406_D2\Var\Var 210-017\400-Work\WO-03410-CADD\Design\2684T99_SHT_District Details.dgn

	USER NAME = jpush	DESIGNED - JRP	REVISED - 3-02-16	STATE OF ILLINOIS DEPARTMENT OF TRANSPORTATION	DISTRICT 2 DETAILS IL 26 OVER DRAINAGE DITCH				F.A.P. RTE.	SECTION	COUNTY	TOTAL SHEETS	SHEET NO.
		DRAWN - JRP	REVISED -						316	(101BR-3)BDR	STEPHENSON	29	21
		CHECKED - JRP	REVISED -						CONTRACT NO. 64T99				
	PLOT DATE = 2/8/2025	DATE - 03/25/2025	REVISED -		SCALE: N.T.S.	SHEET 1	OF 9 SHEETS	STA.	TO STA.	ILLINOIS FED. AID PROJECT			

WORK ZONE SIGN DETAILS

ILLINOIS STANDARD W12-I102



GENERAL NOTES

All work to furnish and install these signs shall be included in the cost of the specified traffic control standards and shall not be paid separately.

All Illinois Standard signs shall conform to the latest edition of the "Illinois Standard Highway Signs Book" in effect on the date of invitation for bids.

Signs shall meet the applicable portions of Sections 701 and 720 of the Standard Specifications.

All dimensions are in inches unless otherwise noted.

COLOR LEGEND AND BORDER BACKGROUND BLACK FL ORANGE NON-REFLECTORIZED REFLECTORIZED

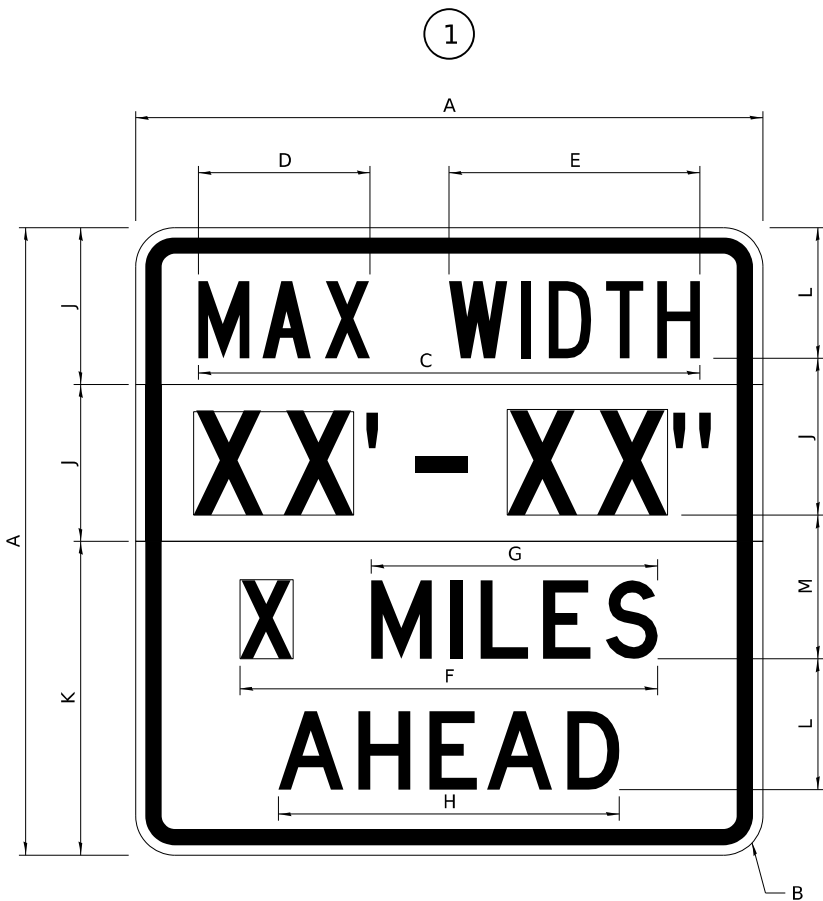
SIGN SIZE	DIMENSIONS	
	A	B
48 x 48	48.00	3.00

1 Illinois Standard signs W12-I102 and W12-I103 shall be used as described in the special provisions.

SIGN SIZE	SERIES BY LINE	MARGIN	BORDER
	1		
48 x 48	12C	0.750	1.250

Sign not to scale

ILLINOIS STANDARD W12-I103



COLOR LEGEND AND BORDER BACKGROUND (WIDTH) BLACK WHITE FL ORANGE NON-REFLECTORIZED REFLECTORIZED REFLECTORIZED

SIGN SIZE	DIMENSIONS											
	A	B	C	D	E	F	G	H	J	K	L	M
48 x 48	48.00	3.00	38.40	13.20	19.20	32.00	22.00	26.20	12.00	24.00	10.00	11.00

SIGN SIZE	SERIES BY LINE				MARGIN	BORDER
	1	2	3	4		
48 x 48	6C	8D	6D	6D	0.750	1.250

Sign not to scale

XX'-XX" WIDTH AND X MILES ARE VARIABLE TOP AND BOTTOM OF BACKGROUND WHITE

MODEL: Default
FILE NAME: C:\Users\jpush\OneDrive - QEI\OCDoc\Consult\Projects\2406_D2-Vac\var 210-017400-Work\WO-03410-CADD\Design\2684T99_SHT_District Details.dgn

	USER NAME	= jpush	DESIGNED	-	JRP	REVISED	-	3-02-16
			DRAWN	-	JRP	REVISED	-	
			CHECKED	-	JRP	REVISED	-	
	PLOT DATE	= 2/8/2025	DATE	-	03/25/2025	REVISED	-	

STATE OF ILLINOIS
DEPARTMENT OF TRANSPORTATION

DISTRICT 2 DETAILS
IL 26 OVER DRAINAGE DITCH

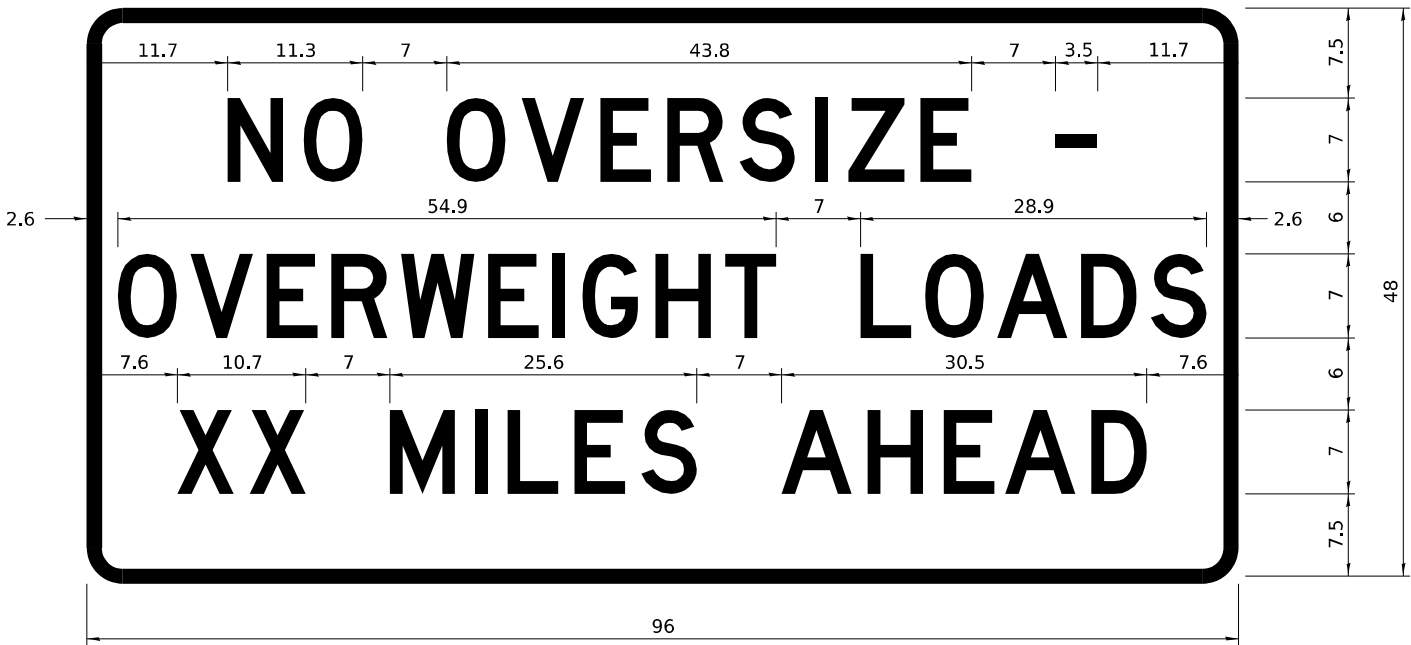
SCALE: N.T.S. SHEET 2 OF 9 SHEETS STA. TO STA.

F.A.P. RTE.	SECTION	COUNTY	TOTAL SHEETS	SHEET NO.
316	(101BR-3)BDR	STEPHENSON	29	22
CONTRACT NO. 64T99				
ILLINOIS FED. AID PROJECT				

WORK ZONE SIGN DETAILS

ROAD CLOSED TO OVERSIZED LOADS

STOP LINE SIGN FOR TEMPORARY SIGNALS



COLOR	LEGEND AND BORDER BACKGROUND	BLACK ORANGE	NON-REFLECTORIZED REFLECTORIZED
-------	------------------------------	--------------	---------------------------------

Permit Loads - Loads Over 13 Feet; 3.0" Radius, 1.3" Border;
[NO OVERSIZE -] D; [OVERWEIGHT LOADS] D 85% spacing; [XX MILES AHEAD] D;
Table of letter and object lefts.

N	O	O	V	E	R	S	I	Z	E	-
11.7	18.1	30.0	36.2	42.8	48.4	54.4	60.7	63.5	69.5	80.8

O	V	E	R	W	E	I	G	H	T	L	O	A	D	S
2.6	8.6	15.0	20.4	26.2	33.4	38.8	41.3	47.4	53.2	64.5	69.9	75.9	82.9	88.7

X	X	M	I	L	E	S	A	H	E	A	D
7.6	13.6	25.3	32.3	35.1	40.6	46.2	57.9	65.1	71.4	76.6	83.7

Sign not to scale

COLOR	LEGEND AND BORDER BACKGROUND	BLACK WHITE	NON-REFLECTORIZED REFLECTORIZED
-------	------------------------------	-------------	---------------------------------

SIGN SIZE	SERIES BY LINE		
	1	2	3
24 x 24	4C	4C	4C

Sign not to scale

GENERAL NOTES

All work to furnish and install these signs shall be included in the cost of the specified traffic control standards and shall not be paid separately.

All Illinois Standard signs shall conform to the latest edition of the "Illinois Standard Highway Signs Book" in effect on the date of invitation for bids.

Signs shall meet the applicable portions of Sections 701 and 720 of the Standard Specifications.

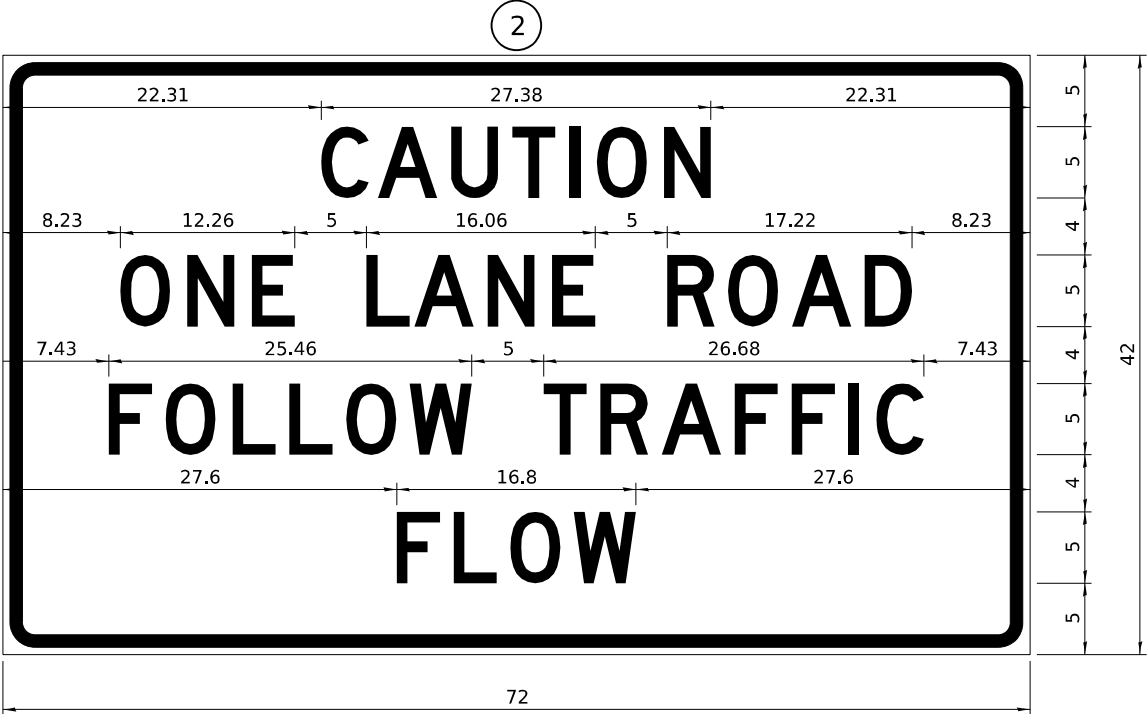
All dimensions are in inches unless otherwise noted.

MODEL: Default
FILE NAME: C:\Users\jpush\OneDrive - QEI\OCDO\Consult\Projects\2406_D2\Var\var 210-017400-Work\WO-03410-CADD\Design\2684T99_SHT_District Details.dgn

	USER NAME = jpush	DESIGNED - JRP	REVISED - 3-02-16	STATE OF ILLINOIS DEPARTMENT OF TRANSPORTATION	DISTRICT 2 DETAILS IL 26 OVER DRAINAGE DITCH			F.A.P. RTE.	SECTION	COUNTY	TOTAL SHEETS	SHEET NO.
		DRAWN - JRP	REVISED -					316	(101BR-3)BDR	STEPHENSON	29	23
		CHECKED - JRP	REVISED -		CONTRACT NO. 64T99							
	PLOT DATE = 2/8/2025	DATE - 03/25/2025	REVISED -		SCALE: N.T.S.	SHEET 3	OF 9	SHEETS	STA.	TO STA.		
								ILLINOIS FED. AID PROJECT				

ENTRANCE SIGN FOR USE
WITH TEMPORARY SIGNALS

WORK ZONE SIGN DETAILS



COLOR	LEGEND AND BORDER BACKGROUND	BLACK ORANGE	NON-REFLECTORIZED REFLECTORIZED
-------	------------------------------	--------------	---------------------------------

2.25" Radius, 0.88" Border, 0.50" Indent;
[CAUTION] D; [ONE LANE ROAD] D;
[FOLLOW TRAFFIC] D; [FLOW] D

2 This sign shall be installed at entrances located between the temporary signals as shown in the staging plans.

Table Of Widths And Spaces

22.31	C	0.62	A	0.94	U	0.94	T	0.94	I	1.17	O	1.17	N	3.36	22.31
-------	---	------	---	------	---	------	---	------	---	------	---	------	---	------	-------

8.23	O	1.17	N	1.18	E
------	---	------	---	------	---

5.00	L	0.31	A	0.94	N	1.17	E
------	---	------	---	------	---	------	---

5.00	R	0.93	O	0.94	A	0.93	D	8.23
------	---	------	---	------	---	------	---	------

7.43	F	0.94	O	1.17	L	0.94	L	0.94	O	0.94	W
------	---	------	---	------	---	------	---	------	---	------	---

5.00	T	0.94	R	0.94	A	0.93	F	0.94	F	0.94	I	1.18	C	7.43
------	---	------	---	------	---	------	---	------	---	------	---	------	---	------

27.60	F	0.94	L	0.94	O	0.93	W	27.60
-------	---	------	---	------	---	------	---	-------

Sign not to scale

GENERAL NOTES

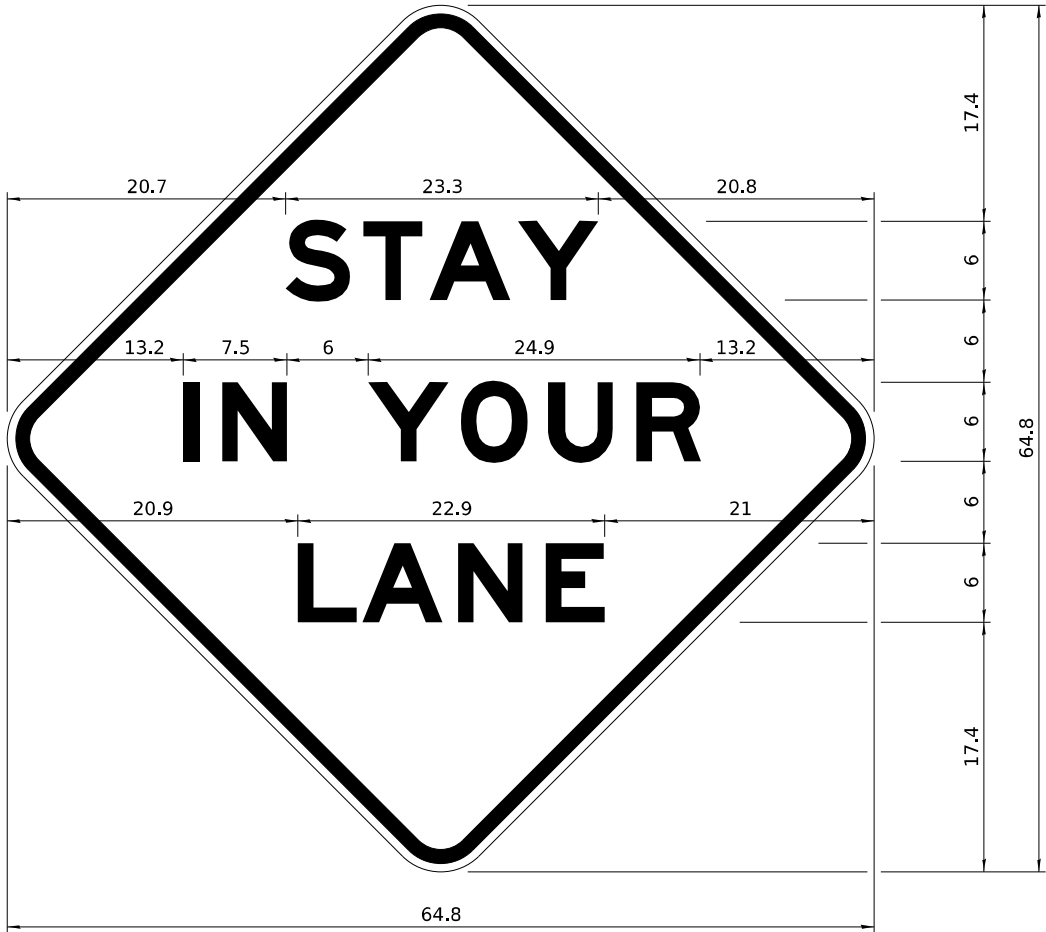
All work to furnish and install these signs shall be included in the cost of the specified traffic control standards and shall not be paid separately.

All Illinois Standard signs shall conform to the latest edition of the "Illinois Standard Highway Signs Book" in effect on the date of invitation for bids.

Signs shall meet the applicable portions of Sections 701 and 720 of the Standard Specifications.

All dimensions are in inches unless otherwise noted.

STAY IN YOUR LANE



COLOR	LEGEND AND BORDER BACKGROUND	BLACK ORANGE	NON-REFLECTORIZED REFLECTORIZED
-------	------------------------------	--------------	---------------------------------

48.0" across sides 3.8" Radius, 1.0" Border, 0.6" Indent;
"STAY" E Mod; "IN YOUR" E Mod; "LANE" E Mod;

Table of Letter and Object Lefts

S	T	A	Y
---	---	---	---

I	N	Y	O	U	R
---	---	---	---	---	---

L	A	N	E
---	---	---	---

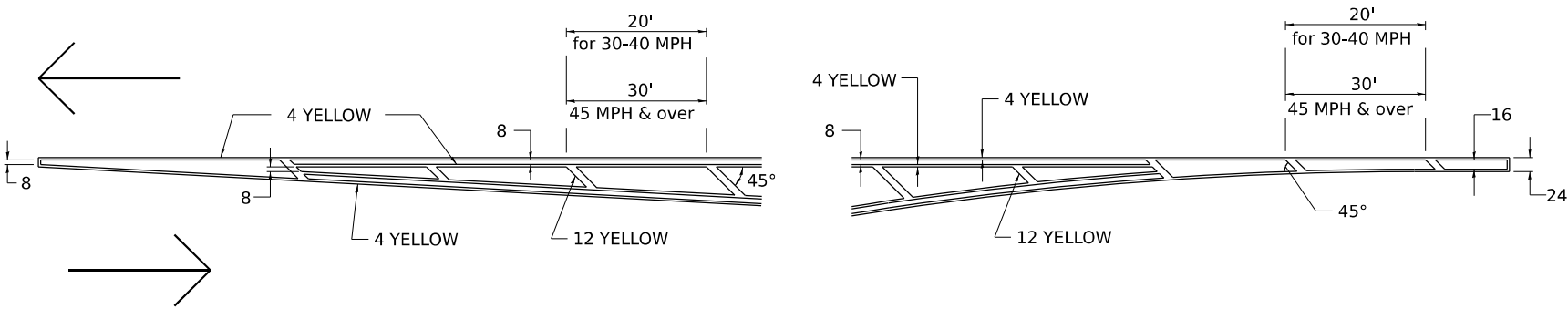
Sign not to scale

MODEL: Default
FILE NAME: C:\Users\jpush\OneDrive - QEI\OCDO\Consult\Projects\2406_D2\Var\Var 210-017400-Work\WO-03410-CADD\Design\2684T99_SHT_District Details.dgn

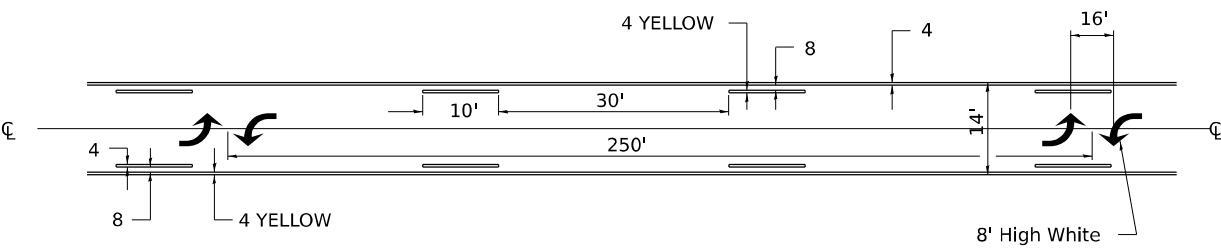
	USER NAME = jpush	DESIGNED - JRP	REVISED - 3-02-16	STATE OF ILLINOIS DEPARTMENT OF TRANSPORTATION	DISTRICT 2 DETAILS IL 26 OVER DRAINAGE DITCH			F.A.P. RTE.	SECTION	COUNTY	TOTAL SHEETS	SHEET NO.
		DRAWN - JRP	REVISED -					316	(101BR-3)BDR	STEPHENSON	29	24
		CHECKED - JRP	REVISED -					CONTRACT NO. 64T99				
	PLOT DATE = 2/8/2025	DATE - 03/25/2025	REVISED -		SCALE: N.T.S.	SHEET 4	OF 9 SHEETS	STA.	TO STA.	ILLINOIS FED. AID PROJECT		

TYPICAL PAVEMENT MARKINGS

TYPICAL PAVEMENT MARKING FOR FLUSH MEDIAN AT LEFT TURN LANE

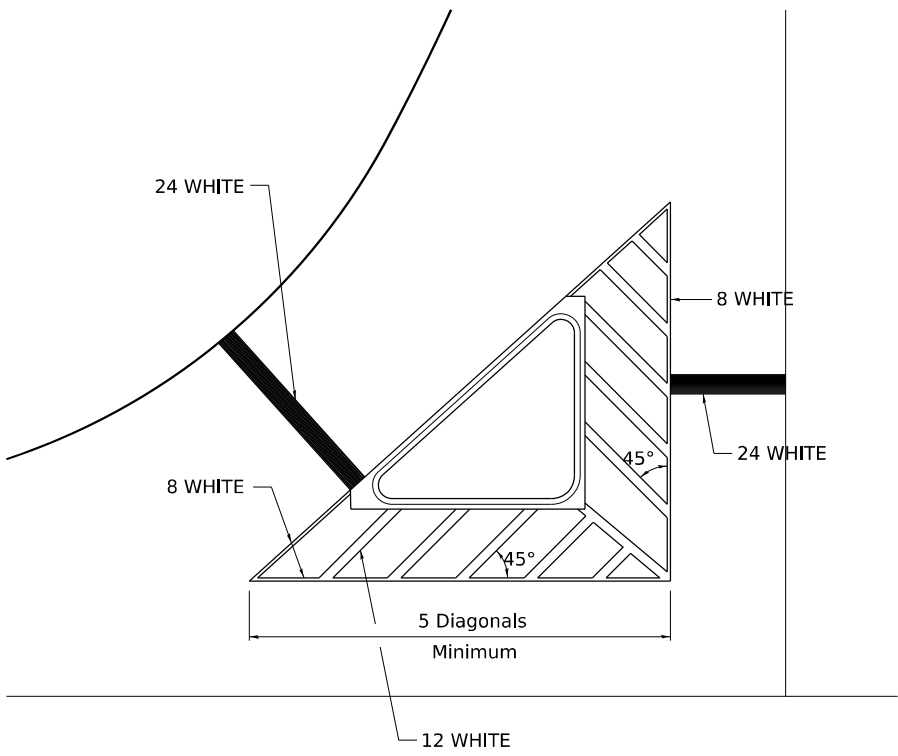


MEDIAN PAVEMENT MARKING



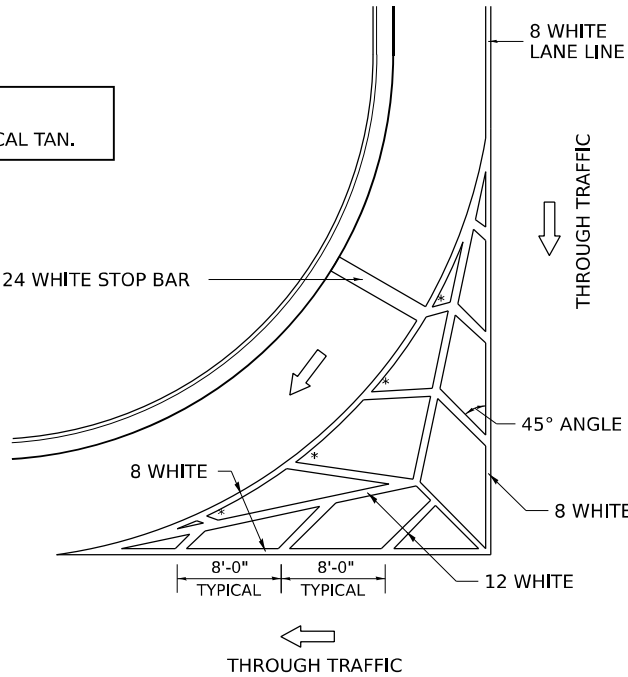
** ALL DIMENSIONS ARE IN INCHES UNLESS OTHERWISE NOTED.

TYPICAL ISLAND OFFSET SHOULDER WIDTH



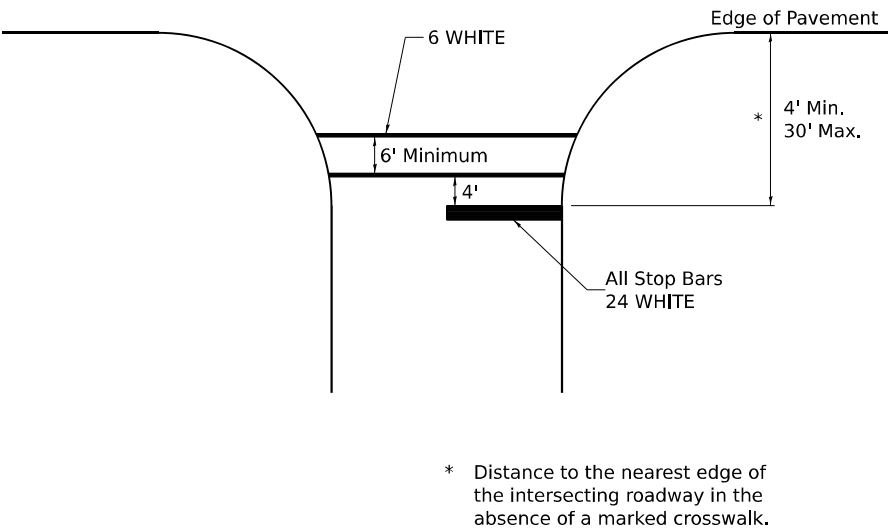
TYPICAL MARKING FOR PAINTED ISLANDS

NOTE:
* 45° TO LOCAL TAN.



STANDARD CROSSWALK MARKING

See Schedules for Locations



* Distance to the nearest edge of the intersecting roadway in the absence of a marked crosswalk.

MODEL: Default
FILE NAME: C:\Users\jpush\OneDrive - QEI\OCDO\Consult\Projects\2406_D2-Var\var 210-017400-Work\WO-03410-CADD\Design\2684T99_SHT_District Details.dgn

USER NAME	= jpush	DESIGNED -	JRP	REVISED -	6-27-14
		DRAWN -	JRP	REVISED -	3-05-12
		CHECKED -	JRP	REVISED -	
PLOT DATE	= 2/8/2025	DATE	= 03/25/2025	REVISED -	

STATE OF ILLINOIS
DEPARTMENT OF TRANSPORTATION

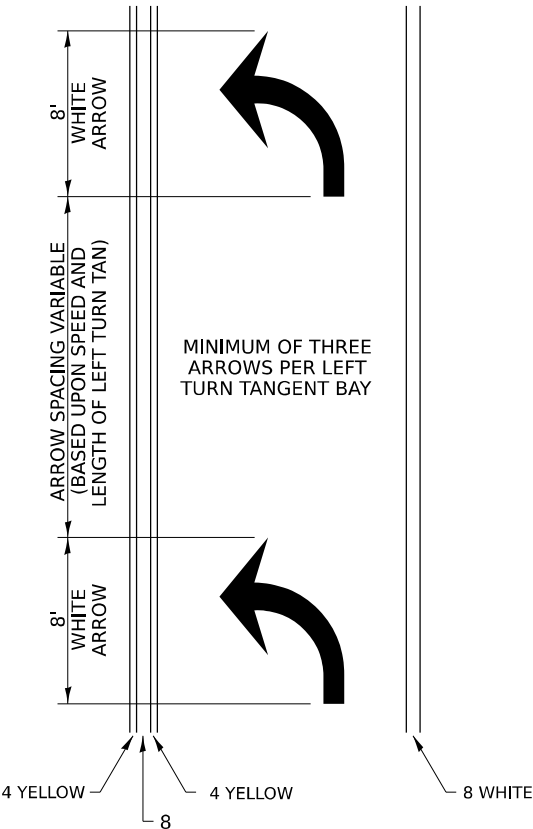
DISTRICT 2 DETAILS
IL 26 OVER DRAINAGE DITCH

SCALE: N.T.S. SHEET 5 OF 9 SHEETS STA. TO STA.

F.A.P. RTE.	SECTION	COUNTY	TOTAL SHEETS	SHEET NO.
316	(101BR-3)BDR	STEPHENSON	29	25
CONTRACT NO. 64T99				
ILLINOIS FED. AID PROJECT				

TYPICAL PAVEMENT MARKINGS

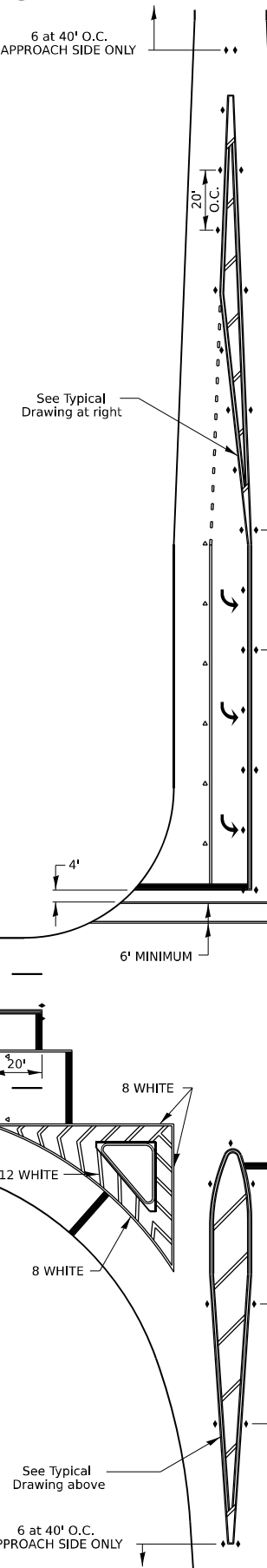
ARROW LAYOUT



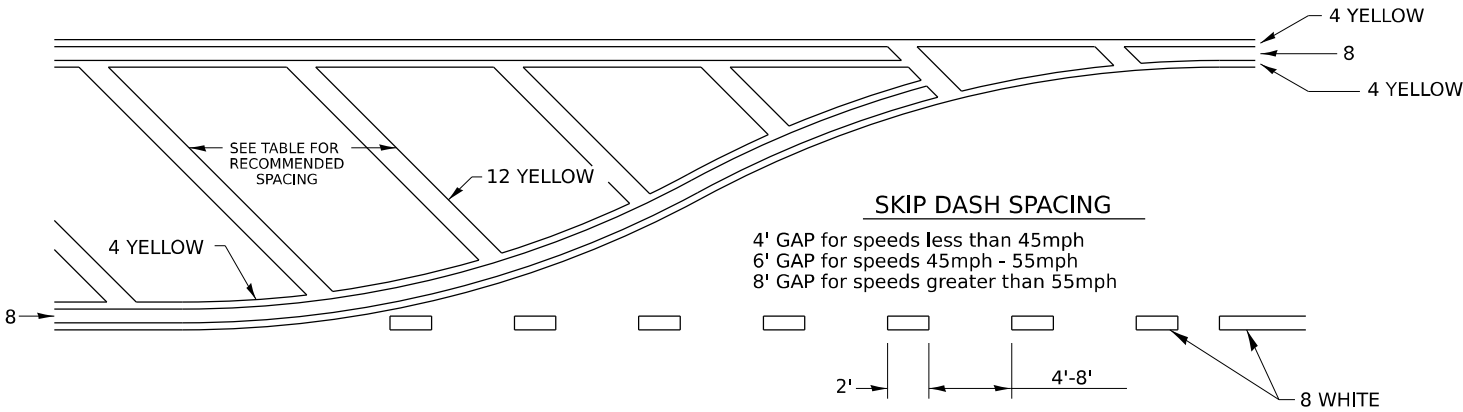
SYMBOLS

- ONE-WAY AMBER MARKER
- ONE-WAY CRYSTAL MARKER
- TWO-WAY AMBER MARKER

ALL DIMENSIONS ARE IN INCHES
UNLESS OTHERWISE NOTED.



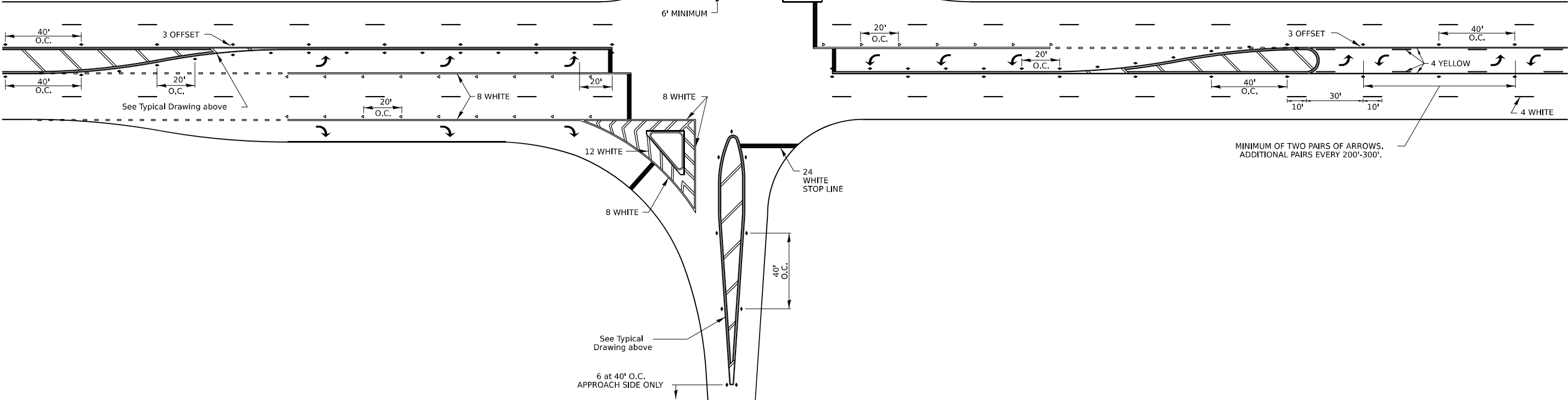
TYPICAL PAVEMENT MARKING FOR FLUSH MEDIAN



RECOMMENDED SPACING BETWEEN DIAGONALS (IN FEET)

Speed Limit Range	Continuous Median Area	Intersection Channelization	Objects (Islands)
less than 30MPH	50'	15'	10'
30-40MPH	75'	20'	15'
45MPH & over	75'	30'	20'

NOTE: if the spacing recommended in the Table does not permit at least five diagonal lines in the area being marked, the spacing from the next lowest speed range should be used. The recommended spacing is measured parallel to the pavement center line.



MODEL: Default
FILE NAME: C:\Users\jpush\OneDrive - QEI\QCDocs\Consult\Projects\2406_D2\Var\Var 210-017400-Work\WO-03410-CADD\Design\2684T99_SHT_District Details.dgn

USER NAME = jpush	DESIGNED - JRP	REVISED - 6-27-14
	DRAWN - JRP	REVISED - 3-05-12
	CHECKED - JRP	REVISED -
PLOT DATE = 2/8/2025	DATE - 03/25/2025	REVISED -

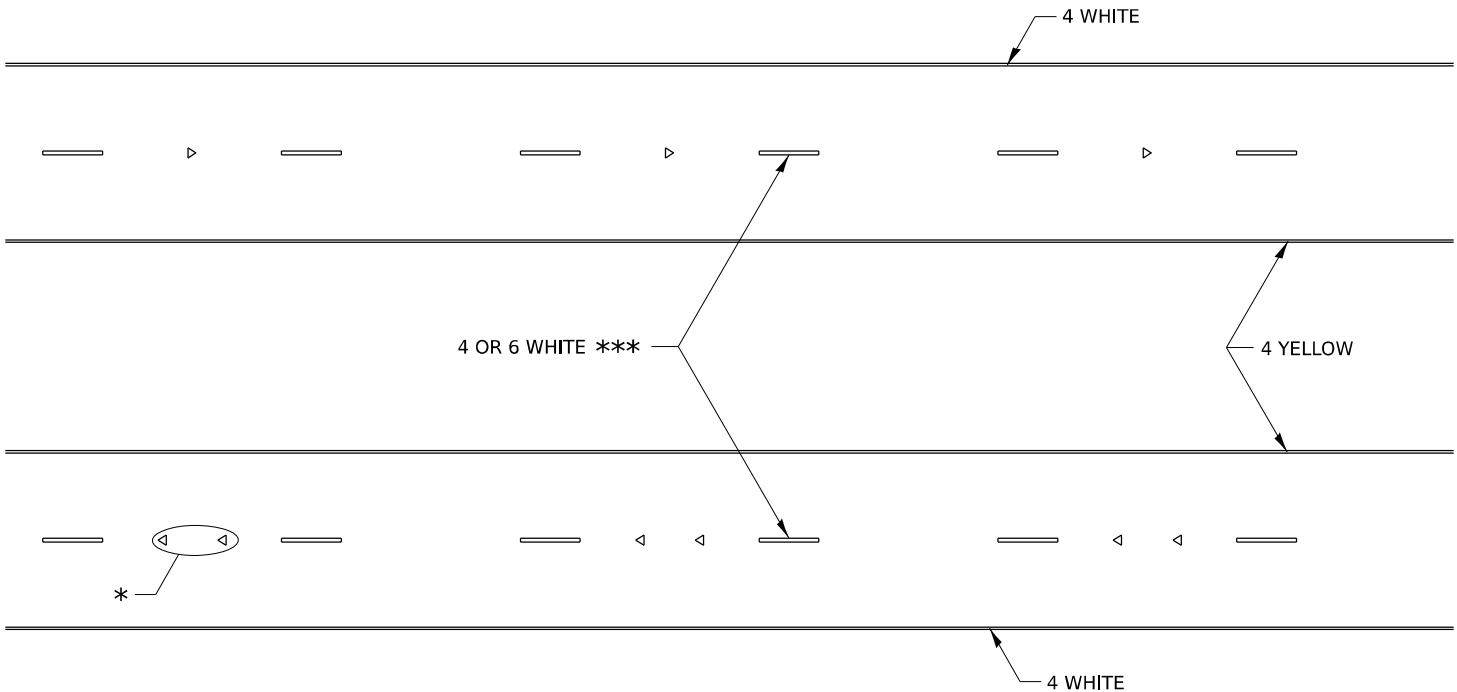
STATE OF ILLINOIS
DEPARTMENT OF TRANSPORTATION

DISTRICT 2 DETAILS
IL 26 OVER DRAINAGE DITCH

SCALE: N.T.S. SHEET 6 OF 9 SHEETS STA. TO STA.

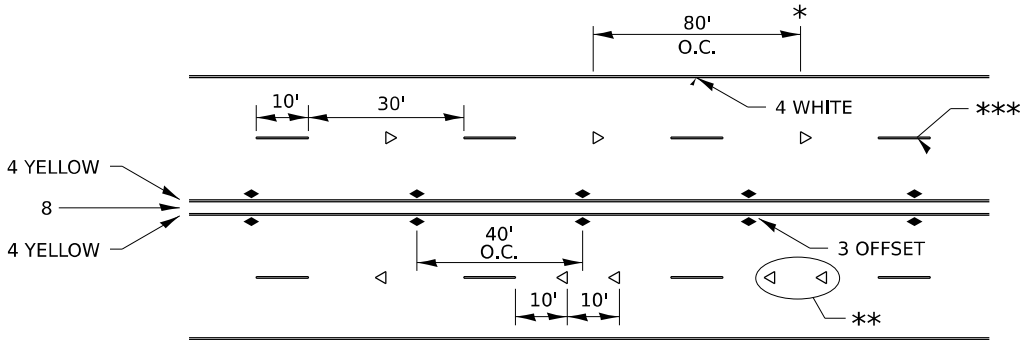
F.A.P. RTE.	SECTION	COUNTY	TOTAL SHEETS	SHEET NO.
316	(101BR-3)BDR	STEPHENSON	29	26
CONTRACT NO. 64T99				
ILLINOIS FED. AID PROJECT				

TYPICAL PAVEMENT MARKINGS



* SEE HIGHWAY STANDARD 781001 FOR SPACING DETAILS.
USE DOUBLE MARKERS WHEN ADT ≥ 20,000.

MULTI-LANE / DIVIDED



* REDUCE TO 40' O.C. ON CURVES WHERE ADVISORY SPEEDS ARE
10 MPH LOWER THAN POSTED SPEEDS.

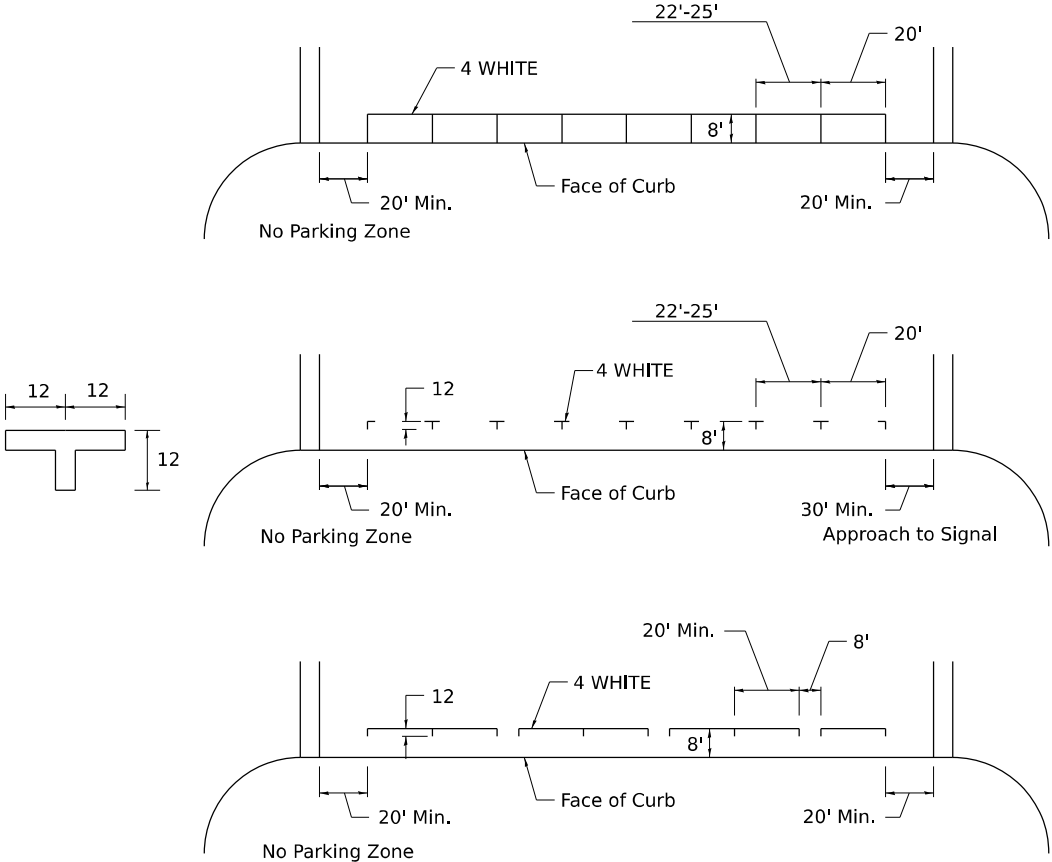
** USE DOUBLE MARKERS WHEN ADT ≥ 20,000

*** CENTERLINE SKIP DASH PAVEMENT MARKING SPEED LIMIT
LESS THAN 40 MPH USE 4" LINE, SPEED LIMIT 40 MPH AND
OVER USE 6" LINE.

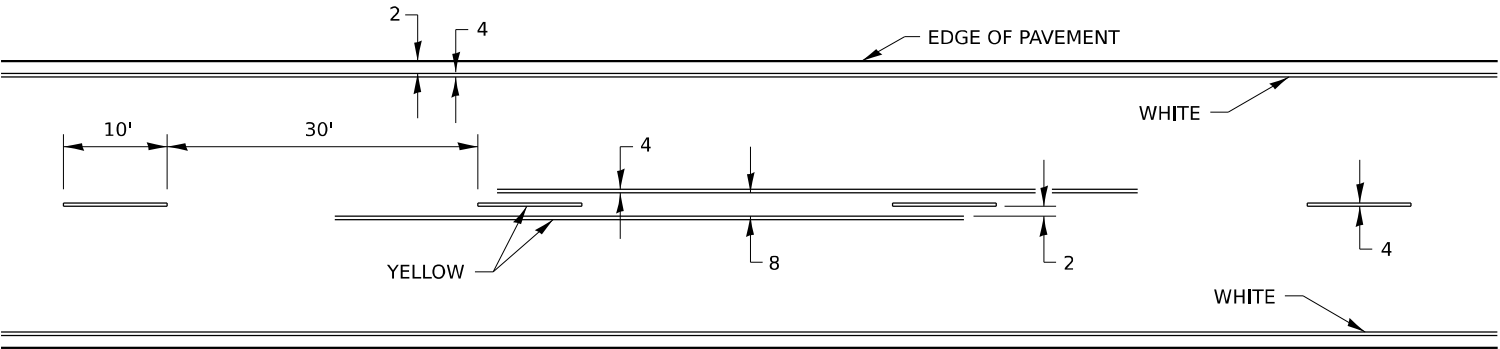
MULTI-LANE / UNDIVIDED & ONE WAY

(FOR MULTI-LANE UNDIVIDED HIGHWAYS USE THIS
DETAIL NOT HIGHWAY STANDARD 781001)

TYPICAL PARKING SPACING



TYPICAL PAVEMENT MARKING FOR TWO LANE SECTION – NO PASSING ZONES



MODEL: Default
FILE NAME: C:\Users\jpush\OneDrive - QEI\QCDocs\Consult\Projects\2406_D2-Vac\Var 210-017400-Work\WO-03410-CADD\Design\2684T99_SHT_District Details.dgn

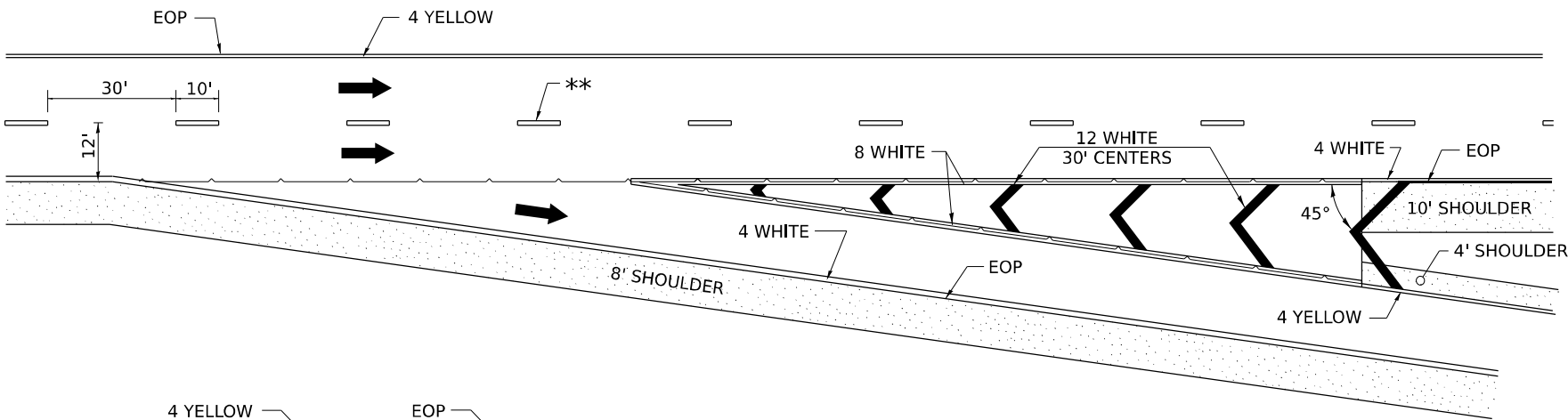
	USER NAME = jpush	DESIGNED - JRP	REVISED - 6-27-14	STATE OF ILLINOIS DEPARTMENT OF TRANSPORTATION	DISTRICT 2 DETAILS IL 26 OVER DRAINAGE DITCH				F.A.P. RTE.	SECTION	COUNTY	TOTAL SHEETS	SHEET NO.
		DRAWN - JRP	REVISED - 8-27-13						316	(101BR-3)BDR	STEPHENSON	29	27
		CHECKED - JRP	REVISED - 11-28-12						CONTRACT NO. 64T99				
	PLOT DATE = 2/8/2025	DATE - 03/25/2025	REVISED -		SCALE: N.T.S.	SHEET 7	OF 9 SHEETS	STA.	TO STA.	ILLINOIS FED. AID PROJECT			

TYPICAL PAVEMENT MARKINGS

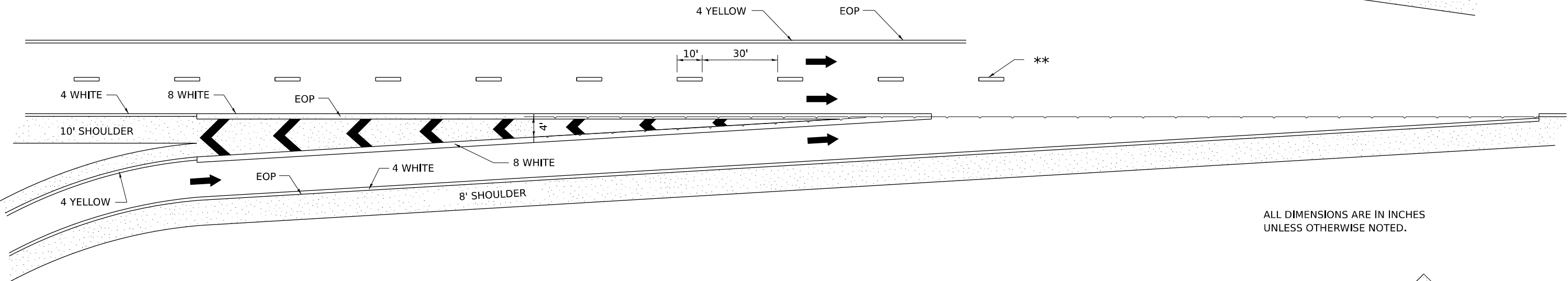
** 6" WHITE ON INTERSTATES, WHERE THE SPPD LIMIT IS 65 MPH, OR WHEN DIRECTED BY THE ENGINEER.
4" WIDE AT ALL OTHER LOCATIONS.

NOTE: GORE HATCHING PLACED ONLY WHEN SCHEDULED IN THE PLANS

EXIT RAMP

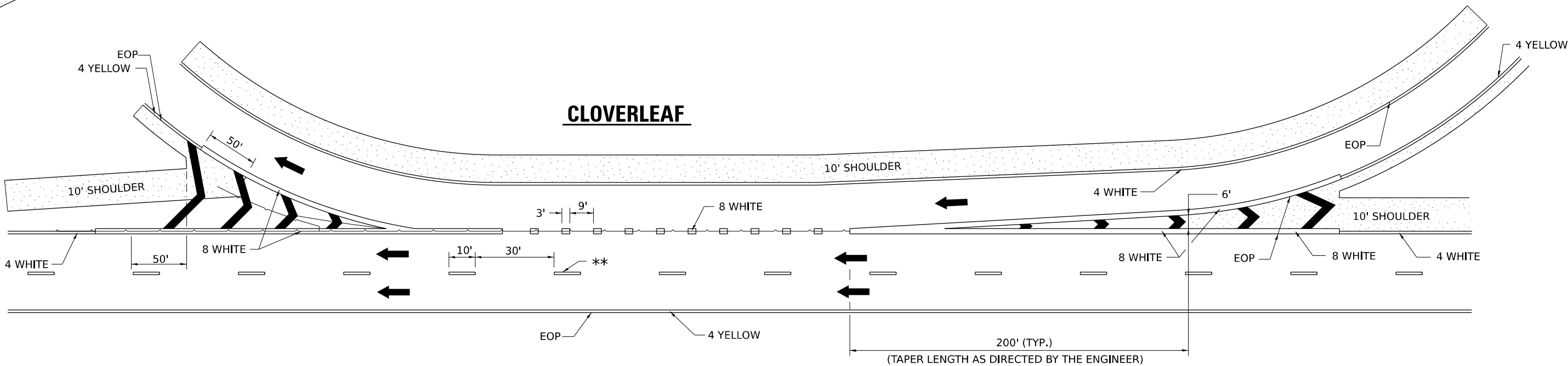


ENTRANCE RAMP



ALL DIMENSIONS ARE IN INCHES UNLESS OTHERWISE NOTED.

CLOVERLEAF



MODEL: Default
FILE NAME: C:\Users\jpush\OneDrive - QEI\OCDO\Consult\Projects\2406_D2\Var\Var 210-017400-Work\WO-03410-CADD\Design\2684T99_SHT_District Details.dgn

PLOT DATE = 2/8/2025	USER NAME = jpush	DESIGNED - JRP	REVISED - 9-15-23
		DRAWN - JRP	REVISED - 8-27-13
		CHECKED - JRP	REVISED - 10-18-11
	DATE - 03/25/2025	REVISED -	

STATE OF ILLINOIS
DEPARTMENT OF TRANSPORTATION

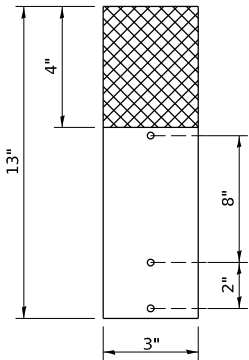
DISTRICT 2 DETAILS IL 26 OVER DRAINAGE DITCH			
SCALE: N.T.S.	SHEET 8	OF 9 SHEETS	STA. TO STA.

F.A.P. RTE. 316	SECTION (101BR-3)BDR	COUNTY STEPHENSON	TOTAL SHEETS 29	SHEET NO. 28
CONTRACT NO. 64T99				
ILLINOIS FED. AID PROJECT				

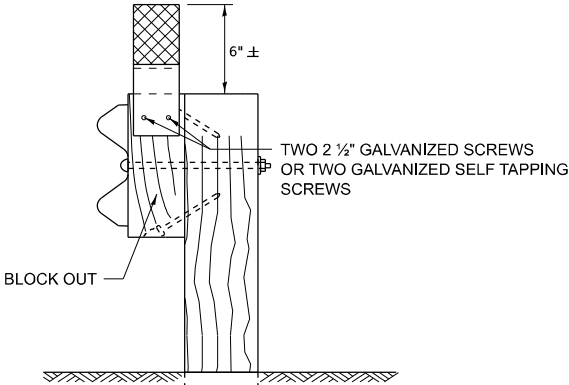
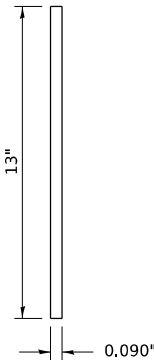
GUARDRAIL REFLECTORS, TYPE C (SPECIAL)

REFLECTORS FOR GUARDRAIL BLOCK OUT OR DELINEATOR POST

STRAIGHT
REFLECTOR / DELINEATOR



SIDE VIEW

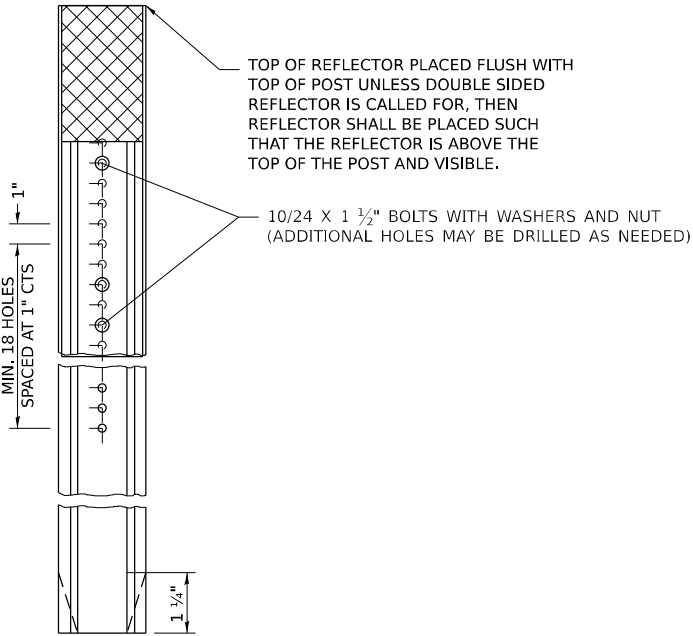


MOUNTED ON A GUARDRAIL BLOCK OUT

REFLECTORS SHALL BE MOUNTED DIRECTLY TO BLOCK OUTS.

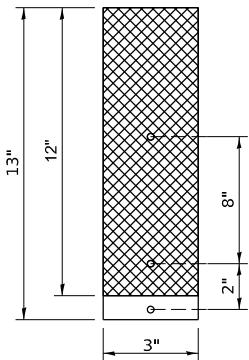
REFLECTORS MOUNTED ON WOODEN OR PLASTIC OR METAL BLOCK OUT SHALL BE MOUNTED USING TWO 2 1/2" GALVANIZED SCREWS WITH WASHERS OR TWO SELF TAPPING GALVANIZED SCREWS WITH WASHERS.

ADDITIONAL SHEETING MAY BE ADDED AS NEEDED FOR TURN AROUNDS AS SHOWN IN THE PLANS

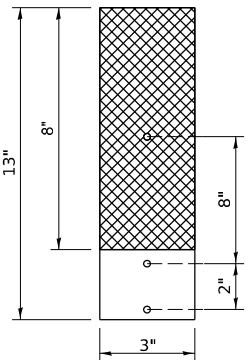


MOUNTED ON A DELINEATOR POST

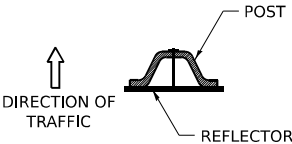
REPLACING
3 BUTTON
DELINEATOR



REPLACING
2 BUTTON
DELINEATOR



ADDITIONAL HOLES SHALL BE DRILLED IN THE REFLECTORS AS SHOWN ABOVE.



DELINEATORS SHALL BE INSTALLED ACCORDING TO STANDARD 635001 EXCEPT THAT THE POST SHALL BE ROTATED 180°. THE POST WILL HAVE THE WIDE SIDE FACING TRAFFIC AND THE REFLECTOR ATTACHECD AS SHOWN ABOVE.

NOTE:

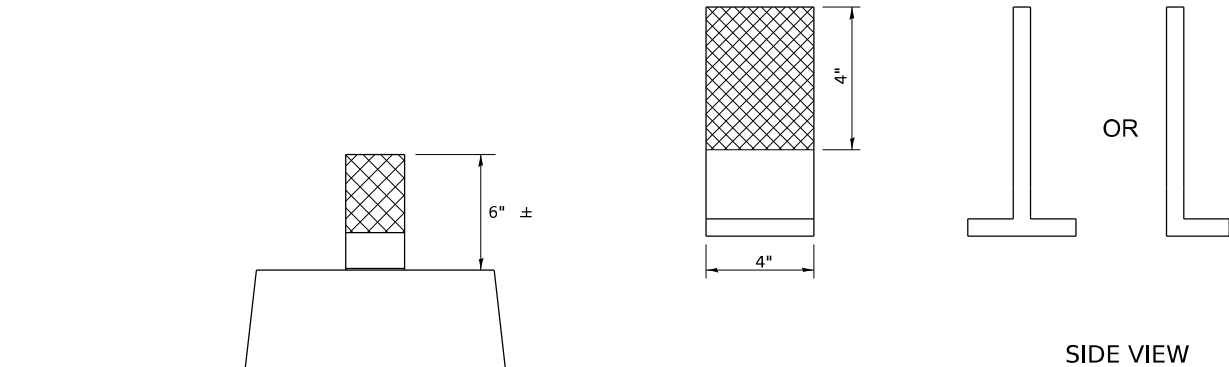
REFLECTORS SHALL BE PAID FOR AT THE CONTRACT UNIT PRICE PER EACH FOR GUARDRAIL REFLECTORS, TYPE C (SPECIAL), WHICH PRICE SHALL ALSO INCLUDE SCREWS, WASHERS OR AN APPROVED BONDING AGENT.

REFLECTORS INSTALLED ON TWO LANE ROADS SHALL BE DOUBLE SIDED AND BOTH SIDES SHALL BE CRYSTAL.

REFLECTORS INSTALLED ON CENTER BARRIER OR IN THE MEDIAN SHALL BE DOUBLE SIDED AND BOTH SIDES SHALL BE AMBER.

REFLECTORS INSTALLED ON DIVIDED HIGHWAYS ON THE OUTSIDE OF THE ROADWAY SHALL BE DOUBLE SIDED CRYSTAL.

SPACING FOR REFLECTORS SHALL BE ACCORDING TO STANDARD 782006 UNLESS OTHERWISE NOTED IN THE PLANS.



REFLECTORS MOUNTED ON BARRIER WALL

NOTE:

REFLECTORS SHALL BE PAID FOR AT THE CONTRACT UNIT PRICE PER EACH FOR GUARDRAIL REFLECTORS, TYPE C (SPECIAL), WHICH PRICE SHALL ALSO INCLUDE SCREWS, WASHERS OR AN APPROVED BONDING AGENT.

REFLECTORS INSTALLED ON TWO LANE ROADS SHALL BE DOUBLE SIDED AND BOTH SIDES SHALL BE CRYSTAL.

REFLECTORS INSTALLED ON CENTER BARRIER SHALL BE DOUBLE SIDE AND BOTH SIDES SHALL BE AMBER.

REFLECTORS INSTALLED ON DIVIDED HIGHWAYS ALONG THE OUSTIDE OF THE HIGHWAY SHALL BE DOUBLE SIDED CRYSTAL.

SPACING FOR REFLECTORS SHALL BE ACCORDING TO STANDARD 782006 UNLESS OTHERWISE NOTED IN THE PLANS.

MODEL: Default
FILE NAME: C:\Users\jpush\OneDrive - QEI\OC\Docs\Consult\Projects\2406_D2-Var\Var 210-017400-Work\WO-03410-CADD\Design\2684T99_SHT_District Details.dgn

	USER NAME	= jpush	DESIGNED	-	JRP	REVISED	-	3-07-24
			DRAWN	-	JRP	REVISED	-	4-27-23
			CHECKED	-	JRP	REVISED	-	6-21-21
	PLOT DATE	= 2/8/2025	DATE	-	03/25/2025	REVISED	-	

STATE OF ILLINOIS
DEPARTMENT OF TRANSPORTATION

DISTRICT 2 DETAILS
IL 26 OVER DRAINAGE DITCH

SCALE: N.T.S. SHEET 9 OF 9 SHEETS STA. TO STA.

F.A.P. RTE.	SECTION	COUNTY	TOTAL SHEETS	SHEET NO.
316	(101BR-3)BDR	STEPHENSON	29	29
CONTRACT NO. 64T99				
ILLINOIS FED. AID PROJECT				