



Illinois Department of Transportation

Office of Intermodal Project Implementation / Division of Aeronautics
1 Langhorne Bond Drive / Springfield, Illinois 62707-8415

June 4, 2025

SUBJECT: Chicago Executive Airport
Wheeling/Prospect Heights, Illinois
Cook County
Illinois Project Number: PWK-5161
SBG Project Number: 3-17-SBGP-TBD
Contract No. PA067
Item No. 05A, June 13, 2025 Letting
Addendum A

NOTICE TO PROSPECTIVE BIDDERS

Attached is an addendum to the plans or proposal. This addendum involves revised and/or added material.

Reason for Addendum:

To revise plans, special provisions, and schedule of prices.

To All Plan Holders:

See the following plan, special provisions, and schedule of prices changes.

Plan Changes:

1. Sheet 2 – Index to Sheets, Summary of Quantities and General Notes
 - a. Summary of Quantities table, Delete Item AR800004 Restrictor Plate – 1 Each; Revised AR705504 4" Perforated Underdrain – 80 Foot, AR705506 6" Perforated Underdrain – 1,205 Foot, Item AR705544 4" Non Perforated Underdrain – 45 Foot, and Add Item AR705546 6" Non Perforated Underdrain – 201 Foot
2. Sheet 3 – Site Plan and Project Control Plan (revised plan sheet not included)
 - a. Delete "Install Restrictor Plate (See Drainage and Miscellaneous Details-3 Sheet" at Runway 24 end
3. Sheet 23 – Replace Volume Control and Drainage Plan with Revised Volume Control and Drainage Plan
 - a. Revised underdrain routing and added 6" Non Perforated Underdrain
4. Sheet 24 – Replace Drainage and Miscellaneous Details – 1 with Revised Drainage and Miscellaneous Details – 1
 - a. Revised Modified Outlet Control Structure (Wall) Detail
5. Sheet 26 – Replace Drainage and Miscellaneous Details – 3 with Revised Drainage and Miscellaneous Details – 3
 - a. Revised and added underdrain inverts in storm sewer profile
 - b. Delete Install Restrictor Plate detail

Special Provisions Changes:

1. Page 45 – Item 705-2.5 Add "Underdrain within the volume control trench shall have a minimum of 2" aggregate bedding".
2. Page 46 – Item 705-5.1 Add Item AR705546 6" Non Perforated Underdrain – Per Foot.
3. Delete Page 49.

4. Pages 50 and 51 – Item 800164-1.1 second paragraph and Item 800164-5.1 first paragraph, Revise to read “The 4” perforated and non perforated underdrain and 6” perforated and non perforated underdrain shall be paid separately as stated in Section 705”.

Schedule of Prices Changes:

Delete: Item AR800004 Restrictor Plate – 1 Each.

Add: Item AR705546 6” Non Perforated Underdrain – 201 Foot.

Revise: Item AR705504 4” Perforated Underdrain – 80 Foot.

Revise: Item AR705506 6” Perforated Underdrain – 1,205 Foot.

Revise: Item AR705544 4” Non Perforated Underdrain – 45 Foot

Prime contractors must utilize the enclosed material when preparing their bid and must include any changes to the Schedule of Prices in their bid.

Questions on this addendum may be directed to Sheue Torng Lee of Crawford, Murphy & Tilly at 630.907.7079.

SUMMARY OF QUANTITIES

ITEM	DESCRIPTION	UNIT	FEDERAL/STATE/LOCAL		STATE/LOCAL	
			ESTIMATED QUANTITY	RECORD QUANTITY	ESTIMATED QUANTITY	RECORD QUANTITY
AR108108	1/C #8 SKV UG CABLE	FOOT	4210		0	
AR108960	REMOVE CABLE	FOOT	4270		0	
AR110202	2" PVC DUCT, DIRECT BURY	FOOT	3350		0	
AR110504	4-WAY CONCRETE ENCASED DUCT	FOOT	85		0	
AR110810	ELECTRICAL HANDHOLE	EACH	2		0	
AR110900	REMOVE DUCT	FOOT	260		0	
AR110909	REMOVE ELECTRICAL HANDHOLE	EACH	4		0	
AR110907	REMOVE ELECTRICAL MANHOLE	EACH	1		0	
AR125415	MITL-BASE MOUNTED	EACH	9		0	
AR125416	MITL-BASE MOUNTED-LED	EACH	22		0	
AR125443	TAXI GUIDANCE SIGN, 3 CHARACTER	EACH	2		0	
AR125444	TAXI GUIDANCE SIGN, 4 CHARACTER	EACH	2		0	
AR125445	TAXI GUIDANCE SIGN, 5 CHARACTER	EACH	2		0	
AR125447	TAXI GUIDANCE SIGN, 7 CHARACTER	EACH	1		0	
AR125625	HURL INPAVEMENT	EACH	1		0	
AR125902	REMOVE BASE MOUNTED LIGHT	EACH	24		0	
AR125903	REMOVE INPAVEMENT LIGHT	EACH	1		0	
AR125904	REMOVE TAXI GUIDANCE SIGN	EACH	4		0	
AR125911	REMOVE RUNWAY GUARD LIGHT	EACH	2		0	
AR150510	ENGINEER'S FIELD OFFICE	L SUM	1		0	
AR150520	MOBILIZATION	L SUM	1		0	
AR152410	UNCLASSIFIED EXCAVATION	CU YD	6130		0	
AR152540	SOIL STABILIZATION FABRIC	SQ YD	3300		0	
AR156510	SILT FENCE	FOOT	1730		0	
AR156520	INLET PROTECTION	EACH	6		0	
AR208515	POROUS GRANULAR EMBANKMENT	CU YD	1110		0	
AR209606	CRUSHED AGG. BASE COURSE - 6"	SQ YD	1750		0	
AR209614	CRUSHED AGG. BASE COURSE - 14"	SQ YD	1339		111	
AR401610	BITUMINOUS SURFACE COURSE	TON	170		0	
AR401900	REMOVE BITUMINOUS PAVEMENT	SQ YD	1800		0	
AR403610	BITUMINOUS BASE COURSE	TON	427		73	
AR501510	10" PCC PAVEMENT	SQ YD	1546		114	
AR501530	PCC TEST BATCH	EACH	1		0	
AR501900	REMOVE PCC PAVEMENT	SQ YD	2060		0	
AR603510	BITUMINOUS PRIME COAT	GALLON	450		0	
AR603510	BITUMINOUS TACK COAT	GALLON	210		0	
AR620520	PAVEMENT MARKING-WATERBORNE	SQ FT	3220		0	
AR620525	PAVEMENT MARKING-BLACK BORDER	SQ FT	3290		0	
AR620900	PAVEMENT MARKING REMOVAL	SQ FT	3250		0	
AR701512	12" RCP, CLASS IV	FOOT	32		0	
AR701518	18" RCP, CLASS IV	FOOT	404		0	
AR705504	4" PERFORATED UNDERDRAIN	FOOT	449 80		0	
AR705506	6" PERFORATED UNDERDRAIN	FOOT	446 1,205		0	
AR705544	4" NON PERFORATED UNDERDRAIN	FOOT	449 45		0	
AR705635	UNDERDRAIN COLLECTION STRUCTURE	EACH	1		0	
AR705900	REMOVE UNDERDRAIN	FOOT	1960		0	
AR705905	REMOVE COLLECTION STRUCTURE	EACH	5		0	
AR751411	INLET-TYPE A	EACH	1		0	
AR751540	MANHOLE 4"	EACH	1		0	
AR751550	MANHOLE 6"	EACH	1		0	
AR751903	REMOVE MANHOLE	EACH	1		0	
AR751943	ADJUST MANHOLE	EACH	1		0	
AR800004	REGISTRATION PLATE	SASH	1		0	
AR800009	PCC SPALL REPAIR	SQ FT	35		0	
AR800164	VOLUME CONTROL INSTALLATION	L SUM	1		0	
AR800308	EXPLORATORY EXCAVATION	EACH	5		0	
AR800816	L-824 RGL ELEVATED, BASE MOUNTED	EACH	2		0	
AR901510	SEEDING	ACRE	3.75		0	
AR905115	HEAVY-DUTY HYDRAULIC MULCH	ACRE	3.75		0	
AR705546	6" NON PERFORATED UNDERDRAIN	FOOT	201		0	

MUNICIPALITIES GENERAL NOTES

- THE CHICAGO EXECUTIVE AIRPORT IS A JOINT OWNERSHIP BY BOTH THE VILLAGE OF WHEELING AND CITY OF PROSPECT HEIGHTS. ALL WORK SHALL BE PERFORMED IN ACCORDANCE WITH VILLAGE AND CITY CODES, ORDINANCES AND STANDARDS AS APPLICABLE.
- ALL CONTRACTORS AND SUBCONTRACTORS SHALL BE REGISTERED WITH THE VILLAGE AND CITY PRIOR TO THE NOTICE TO PROCEED. ALL REGISTRATION FEES SHALL BE INCIDENTAL TO THE CONTRACT.
- THE CONTRACTOR SHALL WORK WITH THE AIRPORT AND ENGINEER TO SECURE THE REQUIRED VILLAGE AND CITY LOCAL CONSTRUCTION PERMITS PRIOR TO THE NOTICE TO PROCEED.
- THE CONTRACTOR SHALL COORDINATE WITH THE VILLAGE AND CITY AT THE WEEKLY PROGRESS MEETINGS AND SHALL NOTIFY THE CITY OF PROSPECT HEIGHTS (847.398.6700) AND THE VILLAGE OF WHEELING (847.459.2600) A MINIMUM OF 48 HOURS PRIOR TO ANY REQUIRED VILLAGE/CITY INSPECTIONS.
- ALL STORM SEWERS AND SANITARY SEWERS ON THE AIRPORT SITE ARE OWNED, OPERATED AND MAINTAINED BY THE CHICAGO EXECUTIVE AIRPORT UNLESS LABELED OTHERWISE.

INDEX TO SHEETS


- COVER SHEET
- INDEX TO SHEETS, SUMMARY OF QUANTITIES AND GENERAL NOTES
- SITE PLAN AND PROJECT CONTROL PLAN
- CONSTRUCTION SAFETY AND PHASING PLAN - 1
- CONSTRUCTION SAFETY AND PHASING PLAN - 2
- CONSTRUCTION SAFETY AND PHASING PLAN - 3A
- CONSTRUCTION SAFETY AND PHASING PLAN - 3B
- CONSTRUCTION SAFETY AND PHASING PLAN - 4A
- CONSTRUCTION SAFETY AND PHASING PLAN - 4B
- CONSTRUCTION SAFETY AND PHASING PLAN GENERAL NOTES AND DETAILS - 1
- CONSTRUCTION SAFETY AND PHASING PLAN GENERAL NOTES AND DETAILS - 2
- CONSTRUCTION SAFETY AND PHASING PLAN GENERAL NOTES AND DETAILS - 3
- STORM WATER POLLUTION PREVENTION PLAN
- STORM WATER POLLUTION PREVENTION PLAN GENERAL NOTES AND DETAILS - 1
- STORM WATER POLLUTION PREVENTION PLAN GENERAL NOTES AND DETAILS - 2
- EXISTING CONDITIONS / PROPOSED REMOVALS
- TYPICAL SECTIONS
- TAXIWAY K4 PLAN AND PROFILE
- PAVEMENT JOINTING PLAN
- PAVEMENT JOINTING DETAILS
- GRADING PLAN
- GRADING, SWPPP AND DRAINAGE PLAN FOR NORTHEAST QUADRANT COMPENSATORY STORAGE
- VOLUME CONTROL AND DRAINAGE PLAN
- DRAINAGE AND MISCELLANEOUS DETAILS - 1
- DRAINAGE AND MISCELLANEOUS DETAILS - 2
- DRAINAGE AND MISCELLANEOUS DETAILS - 3
- DRAINAGE AND MISCELLANEOUS DETAILS - 4
- PAVEMENT MARKING PLAN
- PAVEMENT MARKING DETAILS
- LIGHTING AND ELECTRICAL PLAN
- ELECTRICAL DETAILS - 1
- ELECTRICAL DETAILS - 2
- ELECTRICAL DETAILS - 3
- ELECTRICAL DETAILS - 4
- INDEX TO CROSS SECTIONS
- CROSS SECTIONS - 1
- CROSS SECTIONS - 2
- CROSS SECTIONS - 3
- CROSS SECTIONS - 4
- GEOTECHNICAL ENGINEERING INFORMATION
- MWRD GENERAL NOTES

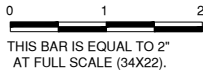
NOTES

- SPECIAL ATTENTION IS NECESSARY WHEN WORKING NEAR FAA POWER AND CONTROL CABLES. ANY FAA UTILITY THAT IS DAMAGED OR CUT DURING CONSTRUCTION SHALL BE REPAIRED IMMEDIATELY. **FAA REQUIRES THAT ANY DAMAGED CABLE BE REPLACED IN ITS ENTIRETY, FROM POWER/CONTROL SOURCE TO THE EQUIPMENT/SERVICE. SPLICES OF ANY KIND WILL NOT BE PERMITTED.** EXPOSURES OF ANY FAA CABLES MUST BE DONE BY HAND DIGGING OR HYDRO-EXCAVATION. NO ADDITIONAL COMPENSATION WILL BE MADE FOR LOCATING, REPLACEMENT OR REPAIR OF FAA FACILITIES OR CABLES BUT, SHALL BE INCIDENTAL TO THE CONTRACT.
- WHEN FAA CABLES ARE REQUIRED TO BE LOCATED, OR THE CONTRACTOR IS PLANNING ON WORKING ON OR AROUND FAA CABLES, CONDUITS OR EQUIPMENT, A 10 WORKING DAY ADVANCED NOTICE SHALL BE GIVEN TO THE FAA BEFORE ANY SUCH MARKINGS ARE REQUIRED. ONCE FAA MARKS THE CABLES, THE CONTRACTOR WILL BE REQUIRED TO SURVEY THE FAA UTILITIES SO THEY CAN BE REPLACED DURING CONSTRUCTION WITHOUT REMARKING BY THE FAA. THIS SHALL BE INCIDENTAL TO THE CONTRACT. THE FAA PERSONNEL ARE ONLY AVAILABLE FROM 9 AM TO 3 PM, MONDAY THROUGH FRIDAY WITH ADVANCED NOTICE.
- AT ALL TIMES THE CONTRACTOR SHALL PERFORM ALL MAINTENANCE WORK NECESSARY TO KEEP EACH NEWLY CONSTRUCTED PAVEMENT SECTION LAYER IN A SATISFACTORY CONDITION.
- THE CONTRACTOR SHALL BE RESPONSIBLE FOR ALL DAMAGE DONE BY HIS HAULING AND CONSTRUCTION EQUIPMENT. ANY WORK NECESSARY TO CORRECT DAMAGED WORK AND EXISTING PAVEMENT SHALL BE PERFORMED BY THE CONTRACTOR AND AT THE EXPENSE OF THE CONTRACTOR.
- THE CONTRACTOR SHALL TAKE THE NECESSARY PRECAUTIONS TO PROTECT THE PAVEMENT STRUCTURE AND SUBGRADE FROM DAMAGE, WHICH MAY INCLUDE BUT NOT BE LIMITED TO USE OF TRACKED EQUIPMENT, SHORT HAUL TRUCKS OR TRACKED PAVERS, AT NO ADDITIONAL COST TO THE CONTRACT.
- THE CONTRACTOR SHALL PERFORM WORK MEETING THE REQUIREMENTS AS SPECIFIED IN THE MWRD PERMIT SET.

IL. CONTRACT: **PA067**
IL. LETTING ITEM: **05A**
IL. PROJECT: **PWK-5161**
S.B.G. PROJECT: **3-17-SBGP-TBD**

REVISIONS

NUMBER	BY	DATE
	STL	05/14/25



CHICAGO EXECUTIVE AIRPORT
WHEELING/PROSPECT HEIGHTS, ILLINOIS
RECONFIGURE TAXIWAY E

INDEX TO SHEETS, SUMMARY OF QUANTITIES
AND GENERAL NOTES

© Copyright CMT, Inc.

CMT
CRAWFORD, MURPHY & TILLY, INC.
CONSULTING ENGINEERS
License No. 184-000613

CHICAGO EXECUTIVE AIRPORT

DESIGN BY: STL

DRAWN BY: JRO

CHECKED BY: DKP

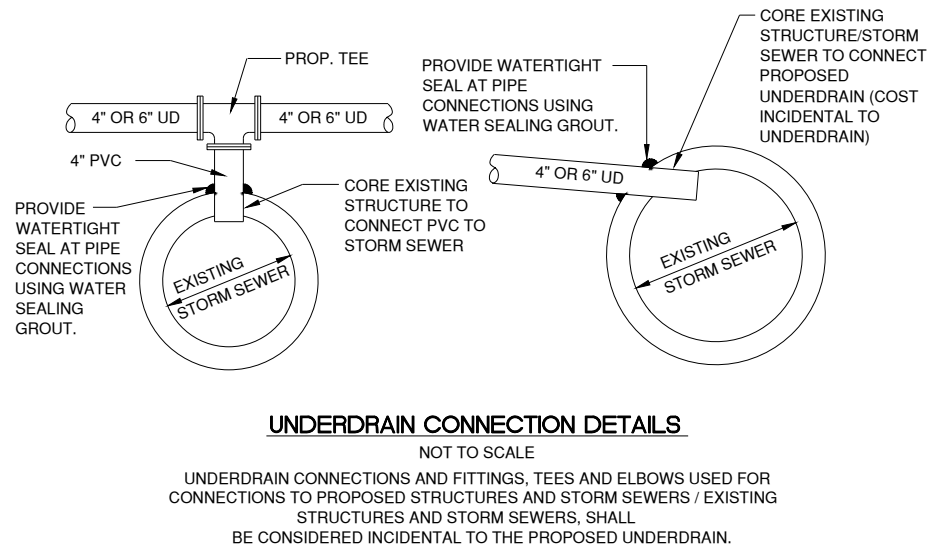
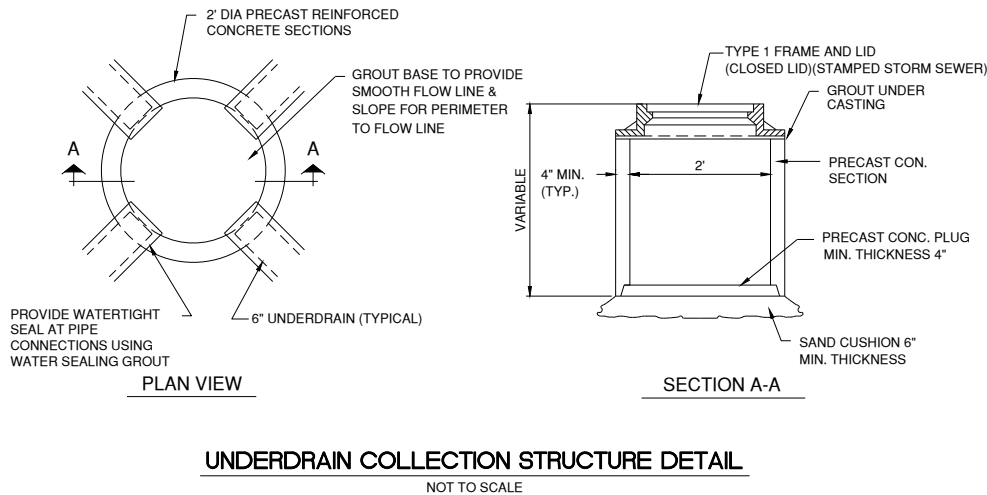
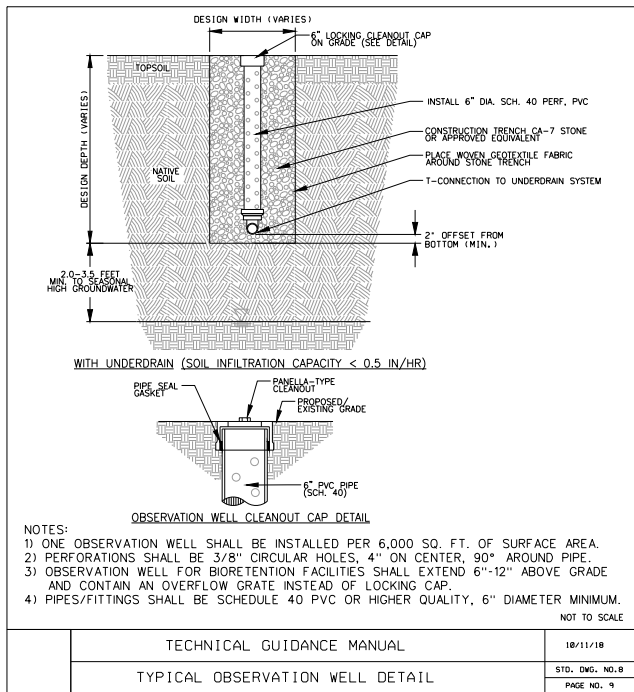
APPROVED BY: DKP

DATE: 04/18/2025

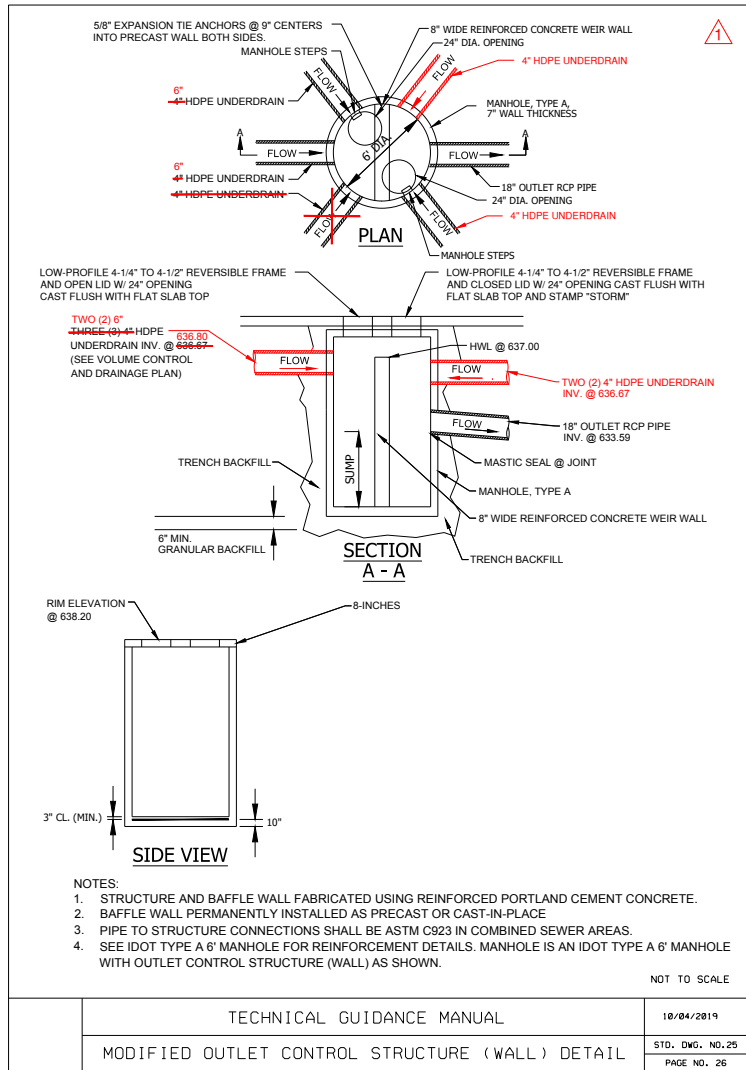
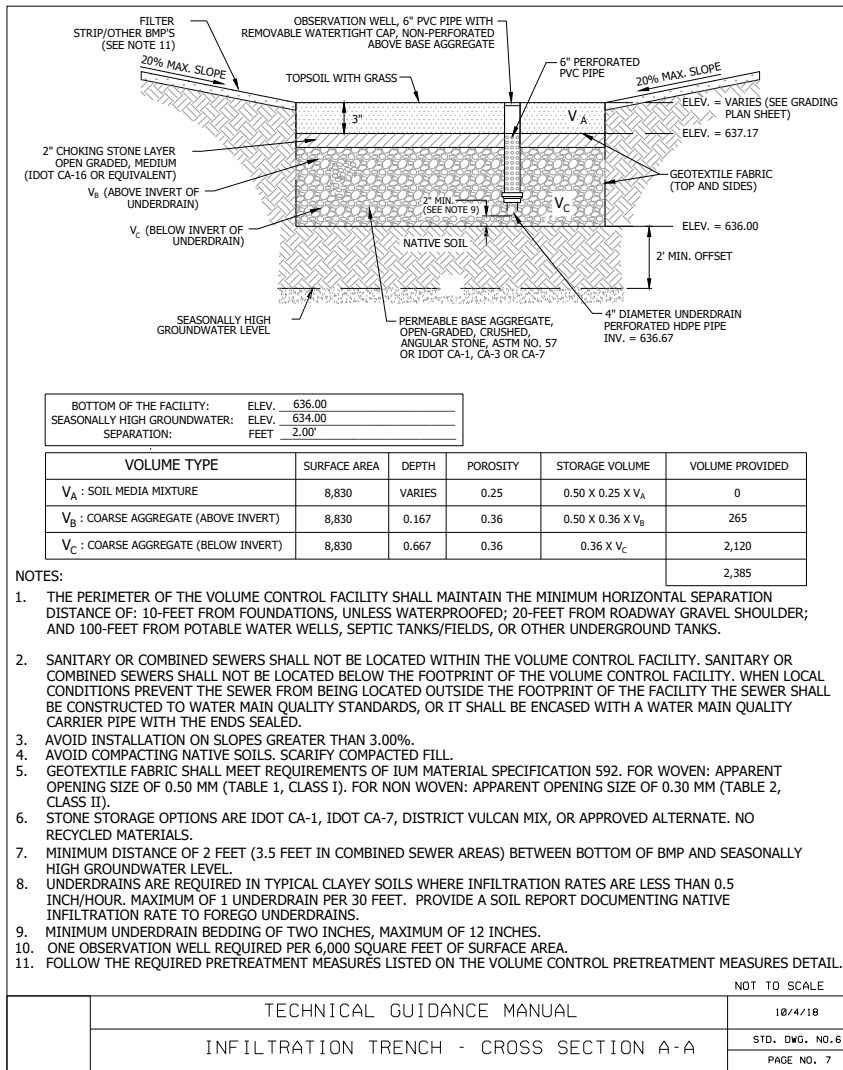
JOB No: 20092262.00

FINAL

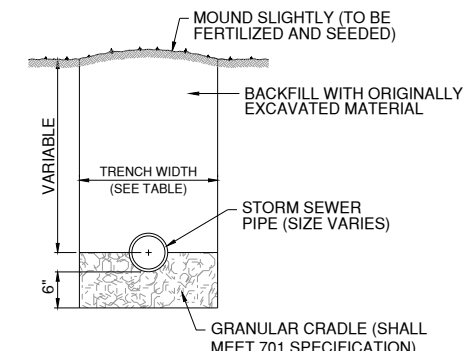
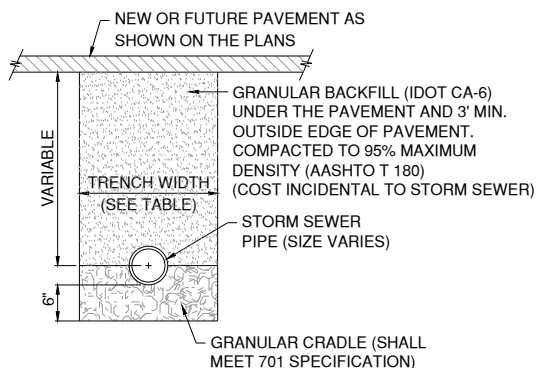
SHEET 2 OF 41 SHEETS



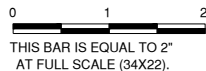
- ## STORM SEWER/UNDERDRAIN NOTES
1. CONTRACTOR SHALL FIELD VERIFY EXISTING STORM SEWER/UNDERDRAIN INVERTS BEFORE INSTALLING NEW PIPE, CONNECTIONS AND ORDERING MATERIALS.
 2. ALL UNDERDRAIN CONNECTIONS, CORING INTO STRUCTURES, CAPS, TEES, BENDS, STORM SEWER ETC. SHALL BE CONSIDERED INCIDENTAL TO THE COST OF THE UNDERDRAIN.
 3. UNDERDRAIN SLOPES FOLLOW EDGE OF PAVEMENT SLOPE UNLESS OTHERWISE NOTED.
 4. UNDERDRAIN CONFLICTS WITH EXISTING CONDITIONS SHALL BE RESOLVED AND COST SHALL BE INCIDENTAL TO UNDERDRAIN.
 5. CORING OF DRAINAGE STRUCTURE AND REMOVAL OF EXISTING STORM SEWER MANHOLE/INLET CONCRETE BENCHES TO FACILITATE CONNECTIONS OF PROPOSED STORM SEWER PIPE SHALL BE CONSIDERED INCIDENTAL TO THE COST OF THE PIPE.



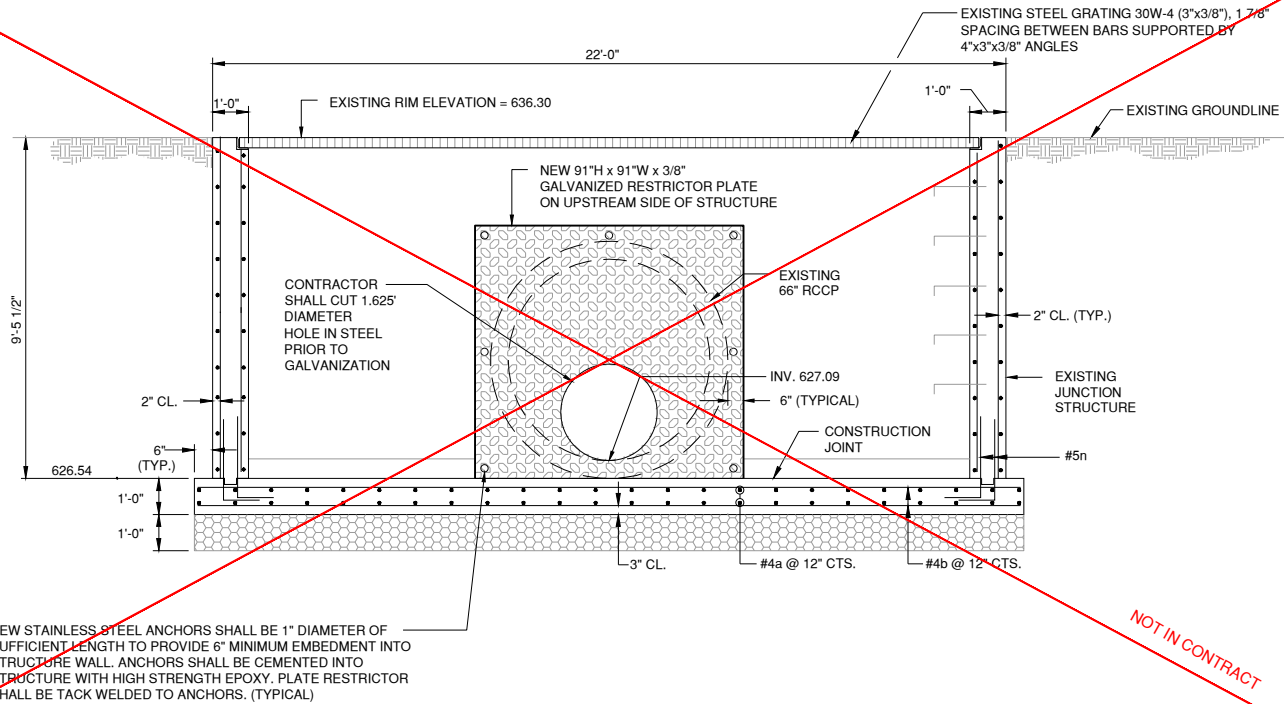
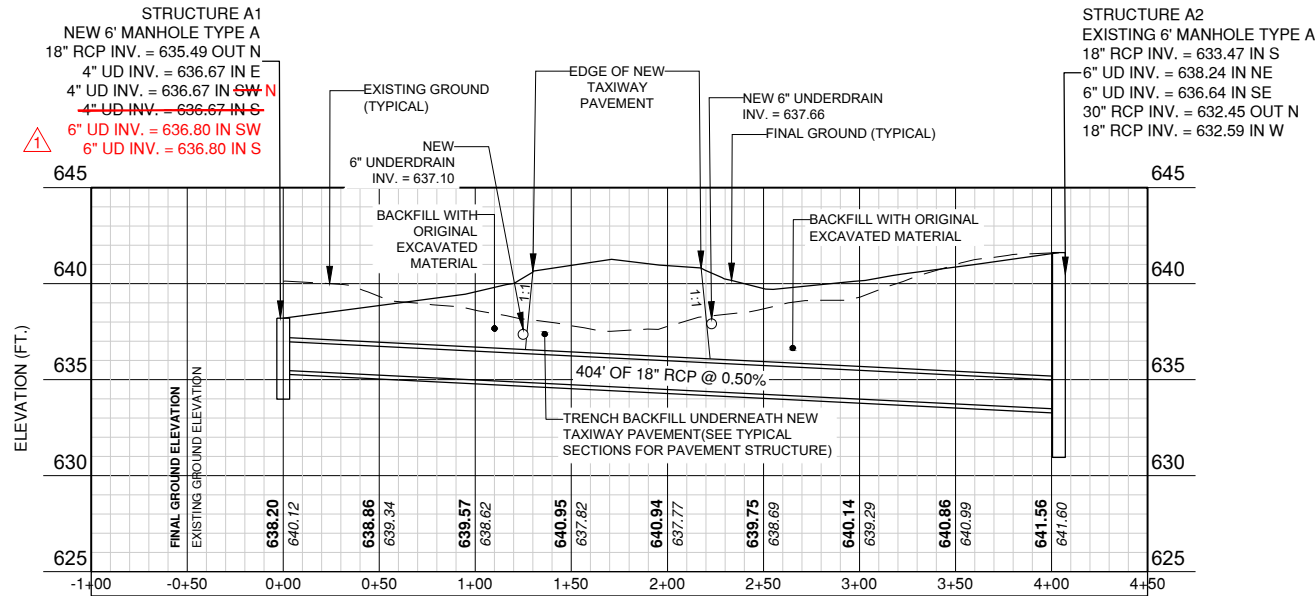
INSIDE DIAMETER OF STORM SEWER (INCHES)	MAXIMUM TRENCH WIDTH
6	3'-7"
8	3'-9"
12	4'-2"
15	4'-6"
18	4'-9"
21	5'-0"
24	5'-4"
27	5'-7"
30	5'-11"
36	6'-6"
42	7'-1"
48	7'-8"
54	8'-3"
60	8'-10"
66	9'-5"
72	10'-0"
78	10'-7"
84	11'-2"
90	11'-9"
96	12'-4"
102	12'-11"
108	13'-6"



REVISIONS		
NUMBER	BY	DATE
1	STL	05/14/25

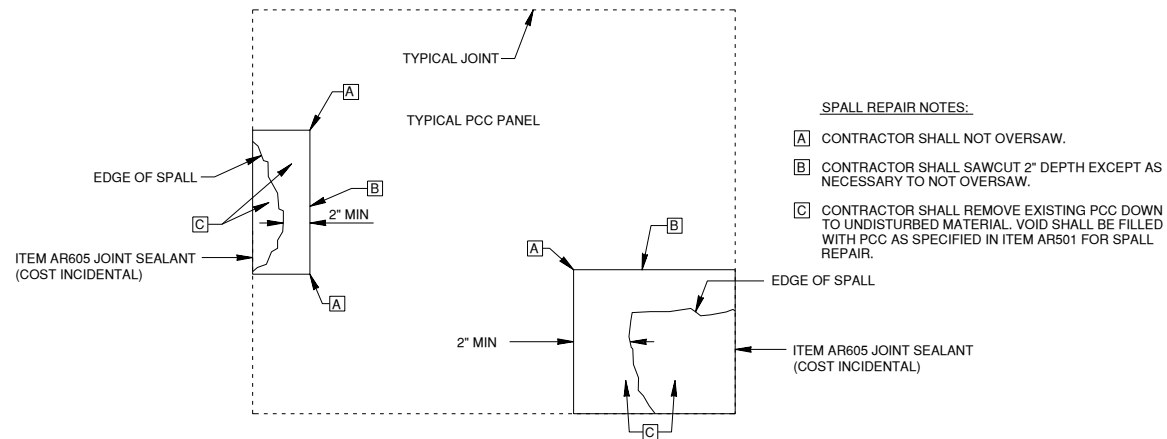


DESIGN BY:	STL
DRAWN BY:	JRO
CHECKED BY:	DKP
APPROVED BY:	DKP
DATE:	04/18/2025
JOB No:	20092262.00



INSTALL RESTRICTOR PLATE (AR800004)

NOT TO SCALE




PLAN VIEW SPALL REPAIR DETAIL (AR800009)

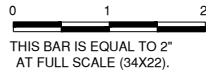
NOT TO SCALE

NOTE: SPALL REPAIR MATERIAL SHALL CONFORM TO THE REQUIREMENTS OF ASTM C881, TYPE III

IL CONTRACT: **PA067**
IL LETTING ITEM: **05A**
IL PROJECT: **PWK-5161**
S.B.G. PROJECT: **3-17-SBGP-TBD**

REVISIONS

NUMBER	BY	DATE
	STL	05/14/25



CHICAGO EXECUTIVE AIRPORT
WHEELING/PROSPECT HEIGHTS, ILLINOIS
RECONFIGURE TAXIWAY E

DRAINAGE AND MISCELLANEOUS DETAILS - 3

© Copyright CMT, Inc.



CRAMFORD, MURPHY & TILLY, INC.
CONSULTING ENGINEERS
License No. 184-000613



DESIGN BY: STL

DRAWN BY: JRO

CHECKED BY: DKP

APPROVED BY: DKP

DATE: 04/18/2025

JOB No: 20092262.00

FINAL

SHEET 26 OF 41 SHEETS

ITEM 705 – PIPE UNDERDRAINS FOR AIRPORTS

MATERIALS

705-2.1 GENERAL

DELETE: Paragraphs a and c.

705-2.2 PIPE

DELETE: Paragraphs a, c and d.

705-2.5 BACKFILL

DELETE: This entire Section and REPLACE with:

Porous backfill shall be free of clay, humus, or other objectionable matter, and shall also conform to particle size specified.

Porous backfill material shall conform to the requirements for IDOT CA-16 or CM-16.

Underdrain within the volume control trench shall have a minimum of 2" aggregate bedding.

CONSTRUCTION METHODS

705-3.2 EXCAVATION

Replace 4th paragraph with the following:

Excavated material not required or acceptable for backfill shall be disposed of by the Contractor off of Airport property or as directed by the Resident Engineer. No additional payment will be made for disposal of excess or unsuitable material. The excavation shall not be carried below the required depth; if this occurs, the trench shall be backfilled at the Contractor's expense with material approved by the Engineer and compacted to the density of the surrounding material.

705-3.4 LAYING AND INSTALLING PIPE

ADD:

Trenches shall be lined with the underdrain trench envelope prior to placing any backfill or underdrain. A 2-foot minimum overlap of material is required where breaks in the fabric occur. The underdrain trench envelope shall be folded over the backfilled trench and weighted down with 1" to 2" of porous backfill.

705-3.7 BACKFILL

DELETE: Paragraphs b and c.

ADD:

Costs associated with backfilling and compaction of bedding and porous backfill shall be considered incidental to the cost of the underdrain.

ADD: New Section:

705-3.11 UNDERDRAIN REMOVAL

This work shall consist of the removal of existing underdrain pipes of various types and sizes. Trenches resulting from underdrain removal shall be backfilled and compacted in accordance with Section 701-3.5. Pipe shall be disposed of off airport property.

METHOD OF MEASUREMENT

705-4.1

ADD:

The underdrain trench envelope, filter fabric, underdrain end caps, backfill and connections to new or existing drainage structures shall not be measured separately for payment but will be considered incidental to the proposed underdrain.

The underdrain removal to be paid for shall be the number of linear feet of underdrain satisfactorily removed and disposed of off airport property, measured along the centerline of the pipe from removal limits.

BASIS OF PAYMENT

705-5.1

Payment will be made under:

ITEM AR705504	4" PERFORATED UNDERDRAIN – PER FOOT.
ITEM AR705506	6" PERFORATED UNDERDRAIN – PER FOOT.
ITEM AR705544	4" NON PERFORATED UNDERDRAIN – PER FOOT.
ITEM AR705546	6" NON PERFORATED UNDERDRAIN – PER FOOT.
ITEM AR705900	REMOVE UNDERDRAIN – PER FOOT.

ITEM 800004 – RESTRICTOR PLATE

DESCRIPTION

800004-1.1

The Contractor shall provide all labor, materials, tools, and equipment necessary to furnish, install and complete the following, as shown in the drawings, herein specified, or otherwise required.

Work includes removal of the existing restrictor plate and installation of a restrictor plate in existing drainage structure as shown on Site Plan and Project Control Plan.

MATERIALS

800004-2.1

New restrictor plate shall be galvanized and installed on the upstream side of the structure. The plate shall have a hole with size as specified on the plans.

New stainless steel anchors shall be 1" diameter of sufficient length to provide embedment into existing drainage structure wall. New restrictor plate shall be tack welded to anchors.

CONSTRUCTION METHODS

800004-3.1

The Contractor shall install the new restrictor plate such the invert of orifice in the new plate matches the existing invert, at the invert elevation indicated on the plans.

METHOD OF MEASUREMENT

800164-4.1

Removal of existing restrictor plate shall not be measured separately for payment but shall be considered incidental to the new restrictor plate.

Connections to existing structure shall not be measured separately for payment but shall be considered incidental to the new restrictor plate.

Acceptance of the pay item occurs after installation of the restrictor plate as specified on the plans.

BASIS OF PAYMENT

800164-5.1

This price shall be full compensation for furnishing all materials and for all preparation and placing of the materials; removal of existing restrictor plate, installation of restrictor plate, furnishing and installation of such specials and connections to other structures to complete the item as shown on the plans; and for all labor equipment, tools and incidentals necessary to complete the item.

Payment will be made under:

ITEM AR800004 RESTRICTOR PLATE – PER EACH.

ITEM 800164 – VOLUME CONTROL INSTALLATION

DESCRIPTION

800164-1.1

The Contractor shall provide all labor, materials, tools, and equipment necessary to furnish, install and complete the following, as shown in the drawings, herein specified, or otherwise required.

The 4" perforated and non perforated underdrain and 6" perforated and non perforated underdrain shall be paid separately as stated in Section 705.

Work includes construction of Volume Control Facility as shown in the plans and per the Metropolitan Water Reclamation District of Greater Chicago – Watershed Management Ordinance Technical Guidance Manual.

MATERIALS

800164-2.1

Permeable base course aggregate shall be open-graded, crushed, angular stone and shall conform per ASTM NO. 57 or Illinois Department of Transportation CA-1, CA-3 or CA-7. Choking stone layer shall be open graded, medium and conform to Illinois Department of Transportation Standard Specifications CA-16 or equivalent.

Fine aggregate base or sand filter shall be Illinois Department of Transportation Standard Specifications FA-2.

Geotextile fabric shall meet requirements of IUM material specification 592. Apparent opening size for woven shall be 0.50 mm (Table 1, Class I). Apparent opening size for non-woven shall be 0.30 mm (Table 2, Class II).

Observation well shall be 6" diameter PVC, Schedule 40 perforated pipe with removable watertight cap, non-perforated above base aggregate. The observation well cap shall be of brass material or approved equal.

Topsoil fill shall be incorporated into the locations as shown on the plans or as directed by the Resident Engineer and compacted in accordance with Item 152.

CONSTRUCTION METHODS

800164-3.1 EXCAVATION

Excavation shall be in accordance with Item 152 Excavation and Embankment and as noted on the plans and details. The soils are suitable to be considered "Uncontaminated Soil" and are recommended as Clean Construction Demolition Debris.

800164-3.2 BASE COURSE AND FINE AGGREGATE

Base course and fine aggregate installation shall be in accordance with the IDOT Standard Specifications, Section 351 as herein modified.

METHOD OF MEASUREMENT

800164-4.1

Excavation, observation well, coarse aggregate, geotextile fabric, backfill and connections to new drainage structures and topsoiling shall not be measured separately for payment but will be considered incidental to the proposed volume control facility.

All excess material shall be stockpiled at the locations noted on the plans or as directed by the Engineer at no additional cost to the contract.

Acceptance of the pay item occurs after construction of the facility meeting the volume control requirements as specified on the plans.

BASIS OF PAYMENT

800164-5.1

The 4" perforated and non perforated underdrain and 6" perforated and non perforated underdrain shall be paid separately as stated in Section 705.

This price shall be full compensation for furnishing all materials and for all preparation, excavation, backfilling and placing of the materials; installation of observation well, furnishing and installation of such specials and connections to pipes and other structures and topsoiling as may be required to complete the item as shown on the plans; and for all labor equipment, tools and incidentals necessary to complete the item.

Payment will be made under:

ITEM AR800164 VOLUME CONTROL INSTALLATION – PER LUMP SUM.