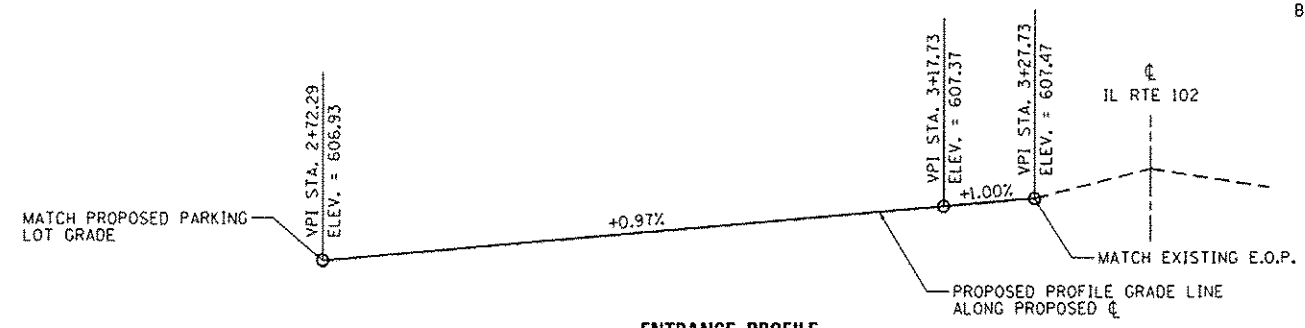
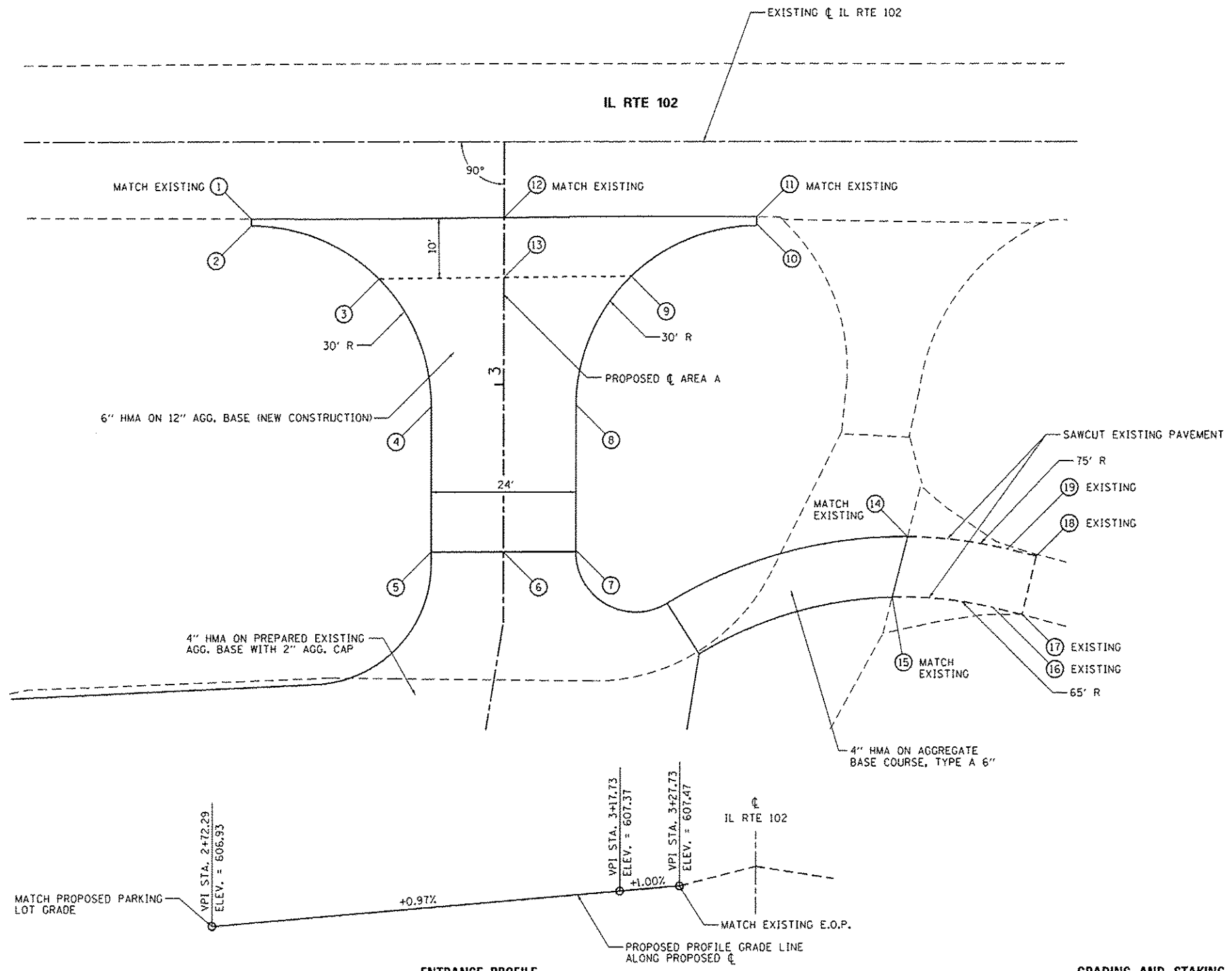
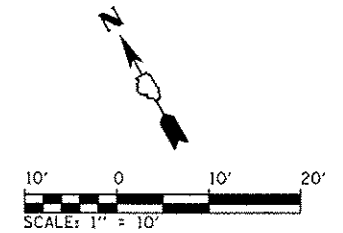


POINT NUMBER	STATION	OFFSET	ELEVATION
1	3+27.52	42.00' LT	607.24
2	3+26.36	42.00' LT	607.23
3	3+17.53	20.74' LT	607.22
4	2+96.36	12.00' LT	606.99
5	2+72.29	12.00' LT	606.75
6	2+72.29	CL	606.93
7	2+72.29	12.00' RT	606.75
8	2+96.36	12.00' RT	607.13
9	3+17.94	21.16' RT	607.52
10	3+26.36	42.00' RT	607.72
11	3+27.81	42.00' RT	607.73
12	3+27.73	CL	607.47
13	3+17.73	CL	607.37
14	2+74.80	67.23' RT	607.15
15	2+64.78	64.66' RT	607.18
16	2+63.03	81.48' RT	607.74
17	2+61.88	86.27' RT	607.90
18	2+71.61	88.60' RT	607.78
19	2+72.75	83.80' RT	607.64



GRADING AND STAKING PLAN

FILE NAME : L:\1007\1106610\10.15\Drawings\CADD_Sheets\46251-shl-AreaA-004-EntranceDetails001.dgn	USER NAME : Brad Do-nen	DESIGNED - MJJ	REVISED -	STATE OF ILLINOIS DEPARTMENT OF TRANSPORTATION	ENTRANCE DETAILS - AREA A KANKAKEE RIVER STATE PARK			F.A. RTE.	SECTION	COUNTY	TOTAL SHEETS	SHEET NO.
PLOT SCALE : 20.0000' / in.		DRAWN - RAH	REVISED -		SCALE: 1" = 10'	SHEET 4 OF 5 SHEETS	STA.	TO STA.	PARK ROADS	*	140	23
PLOT DATE : 4/6/2013		CHECKED - BJD	REVISED -						* WILL & KANKAKEE		CONTRACT NO. 46251	
		DATE - 3/29/2013	REVISED -						ILLINOIS FED. AID PROJECT			