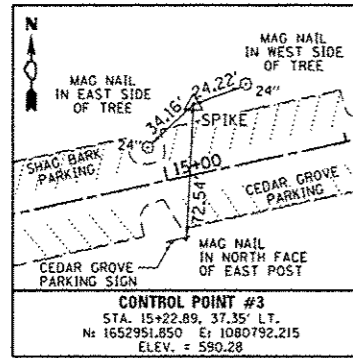
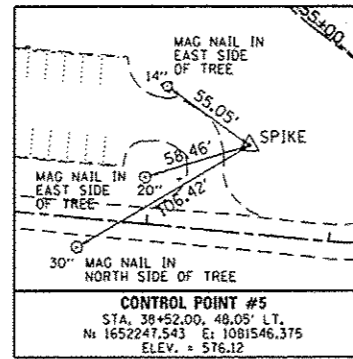
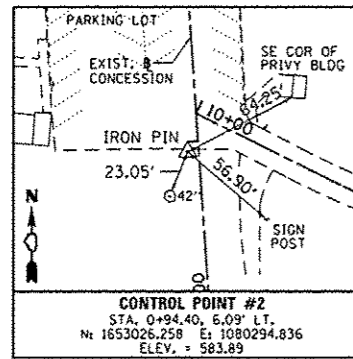
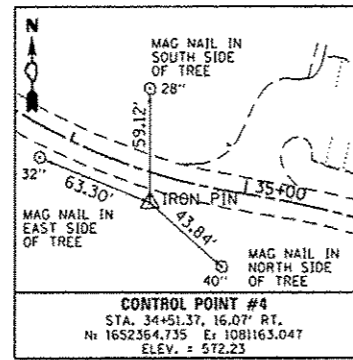
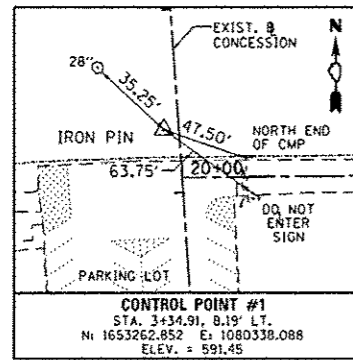


CONTROL POINTS



CURVE DATA

SHAG BARK & CEDAR GROVE

EXIST. ϕ SHAG BARK AND CEDAR GROVE
 CURVE-1 DATA
 PI STA. = 11+73.66
 Δ = 38° 39' 23" (LT)
 D = 23° 52' 24"
 R = 240.00'
 T = 84.18'
 L = 161.92'
 E = 14.33'
 P.C. STA. = 10+89.48
 P.T. STA. = 12+51.40

WEST PARK ROAD

EXIST. ϕ WEST PARK ROAD
 CURVE-1 DATA
 PI STA. = 23+51.38
 Δ = 1° 21' 51" (RT)
 D = 0° 11' 39"
 R = 29,515.00'
 T = 351.38'
 L = 702.72'
 E = 2.09'
 P.C. STA. = 20+00.00
 P.C.C. STA. = 27+02.72

EXIST. ϕ WEST PARK ROAD
 CURVE-6 DATA
 PI STA. = 33+57.17
 Δ = 52° 44' 18" (LT)
 D = 17° 37' 46"
 R = 325.00'
 T = 161.11'
 L = 299.15'
 E = 37.74'
 P.C.C. STA. = 31+96.05
 P.R.C. STA. = 34+95.20

EXIST. ϕ WEST PARK ROAD
 CURVE-2 DATA
 PI STA. = 27+38.89
 Δ = 91° 53' 31" (RT)
 D = 163° 42' 08"
 R = 35.00'
 T = 36.18'
 L = 56.13'
 E = 15.34'
 P.C.C. STA. = 27+02.72
 P.T. STA. = 27+58.85

EXIST. ϕ WEST PARK ROAD
 CURVE-7 DATA
 PI STA. = 35+58.36
 Δ = 12° 01' 04" (RT)
 D = 9° 32' 57"
 R = 600.00'
 T = 63.16'
 L = 125.85'
 E = 3.31'
 P.R.C. STA. = 34+95.20
 P.R.C. STA. = 36+21.05

EXIST. ϕ WEST PARK ROAD
 CURVE-3 DATA
 PI STA. = 28+74.04
 Δ = 14° 31' 22" (LT)
 D = 19° 05' 55"
 R = 300.00'
 T = 38.23'
 L = 76.04'
 E = 2.43'
 P.C. STA. = 28+35.81
 P.C.C. STA. = 29+11.85

EXIST. ϕ WEST PARK ROAD
 CURVE-8 DATA
 PI STA. = 36+73.43
 Δ = 15° 29' 43" (LT)
 D = 14° 52' 55"
 R = 385.00'
 T = 52.38'
 L = 104.12'
 E = 3.55'
 P.R.C. STA. = 36+21.05
 P.T. STA. = 37+25.17

EXIST. ϕ WEST PARK ROAD
 CURVE-4 DATA
 PI STA. = 29+55.51
 Δ = 1° 41' 34" (LT)
 D = 1° 56' 20"
 R = 2,955.00'
 T = 43.65'
 L = 87.30'
 E = 0.32'
 P.C.C. STA. = 29+11.85
 P.C.C. STA. = 29+99.15

EXIST. ϕ WEST PARK ROAD
 CURVE-9 DATA
 PI STA. = 39+60.10
 Δ = 63° 57' 39" (LT)
 D = 63° 39' 43"
 R = 90.00'
 T = 56.20'
 L = 100.47'
 E = 16.10'
 P.C. STA. = 39+03.90
 P.T. STA. = 40+04.37

EXIST. ϕ WEST PARK ROAD
 CURVE-5 DATA
 PI STA. = 30+98.14
 Δ = 14° 39' 04" (LT)
 D = 7° 26' 28"
 R = 770.00'
 T = 98.99'
 L = 196.90'
 E = 6.34'
 P.C.C. STA. = 29+99.15
 P.C.C. STA. = 31+96.05

COORDINATE DATA

CONCESSION

P.O.T. STA. 0+00.00
 N. : 1652932.402
 E. : 1080283.026

P.O.T. STA. 4+00.00
 N. : 1653325.236
 E. : 1080358.400

SHAG BARK & CEDAR GROVE

P.O.T. STA. 10+00.00
 N. : 1653045.510
 E. : 1080304.728

P.C. STA. 10+89.48
 N. : 1652986.460
 E. : 1080371.957

P.I. STA. 11+73.66
 N. : 1652930.908
 E. : 1080435.203

P.T. STA. 12+51.40
 N. : 1652927.035
 E. : 1080519.294

P.O.T. STA. 17+45.53
 N. : 1652904.295
 E. : 1081012.893

WEST PARK ROAD

P.C. STA. 20+00.00
 N. : 1653234.995
 E. : 1080341.085

P.C.C. STA. 31+96.05
 N. : 1652579.892
 E. : 1081025.472

P.I. STA. 23+51.38
 N. : 1653148.870
 E. : 1080681.742

P.I. STA. 33+57.17
 N. : 1652423.179
 E. : 1081062.870

P.C.C. STA. 27+02.72
 N. : 1653054.659
 E. : 1081020.252

P.R.C. STA. 34+95.20
 N. : 1652358.061
 E. : 1081210.238

P.I. STA. 27+38.89
 N. : 1653044.959
 E. : 1081055.103

P.I. STA. 35+58.36
 N. : 1652332.534
 E. : 1081268.007

P.T. STA. 27+58.85
 N. : 1653010.448
 E. : 1081044.258

P.R.C. STA. 36+21.05
 N. : 1652295.538
 E. : 1081319.195

P.C. STA. 28+35.81
 N. : 1652937.027
 E. : 1081021.187

P.I. STA. 36+73.43
 N. : 1652264.856
 E. : 1081361.648

P.I. STA. 28+74.04
 N. : 1652900.560
 E. : 1081009.728

P.T. STA. 37+25.17
 N. : 1652246.630
 E. : 1081410.754

P.C.C. STA. 29+11.85
 N. : 1652862.384
 E. : 1081007.779

P.C. STA. 39+03.90
 N. : 1652184.441
 E. : 1081578.315

P.I. STA. 29+55.51
 N. : 1652818.787
 E. : 1081005.554

P.I. STA. 39+60.10
 N. : 1652164.888
 E. : 1081630.999

P.C.C. STA. 29+99.16
 N. : 1652775.143
 E. : 1081004.618

P.T. STA. 40+04.37
 N. : 1652203.640
 E. : 1081671.695

P.I. STA. 30+98.14
 N. : 1652676.177
 E. : 1081002.494

FILE NAME : L:\1001\1186018\15\Draw\CA00_Sheets\146251-shg-WestParkRoad-002\Alignment.dgn	USER NAME : Brad Owen	DESIGNED - MJO	REVISED -	STATE OF ILLINOIS DEPARTMENT OF TRANSPORTATION	ALIGNMENTS CONCESSION, SHAG BARK, CEDAR GROVE AND WEST PARK ROAD KANKAKEE RIVER STATE PARK			F.A. RTE.	SECTION	COUNTY	TOTAL SHEETS	SHEET NO.
Default	PLOT SCALE : 100.0000' / in.	DRAWN - RAH	REVISED -		SCALE: N.T.S.	SHEET 2 OF 2 SHEETS	STA.	TO STA.	PARK ROADS	*	140	45
	PLOT DATE : 4/6/2013	CHECKED - BJO	REVISED -						* WILL & KANKAKEE		CONTRACT NO. 46251	
		DATE - 3/29/2013	REVISED -						ILLINOIS FED. AID PROJECT			