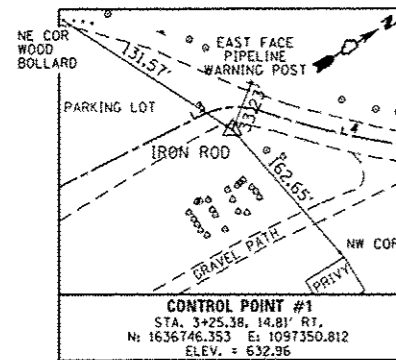
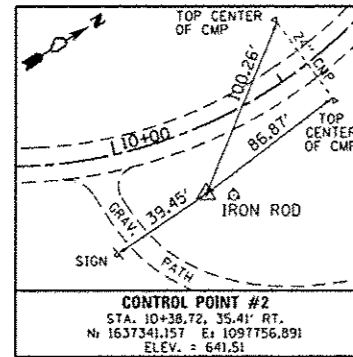


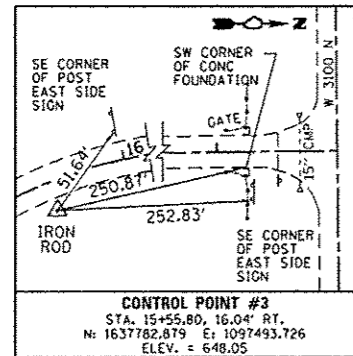
**CONTROL POINTS**



**CONTROL POINT #1**  
 STA. 3+25.38, 14.81' RT.  
 N: 1636746.353 E: 1097350.812  
 ELEV. = 632.96



**CONTROL POINT #2**  
 STA. 10+38.72, 35.41' RT.  
 N: 1637341.157 E: 1097756.891  
 ELEV. = 641.51



**CONTROL POINT #3**  
 STA. 15+55.80, 16.04' RT.  
 N: 1637782.879 E: 1097493.726  
 ELEV. = 648.05

**CURVE DATA**

EXIST.  $\phi$  DAVIS CREEK CURVE-1 DATA  
 PI STA. = 3+26.63  
 $\Delta = 45^\circ 12' 06''$  (RT)  
 $D = 114^\circ 35' 30''$   
 $R = 50.00'$   
 $T = 20.81'$   
 $L = 39.45'$   
 $E = 4.16'$   
 P.C. STA. = 3+05.82  
 P.R.C. STA. = 3+45.26

EXIST.  $\phi$  DAVIS CREEK CURVE-2 DATA  
 PI STA. = 4+31.21  
 $\Delta = 18^\circ 35' 41''$  (LT)  
 $D = 10^\circ 54' 49''$   
 $R = 525.00'$   
 $T = 85.95'$   
 $L = 170.38'$   
 $E = 6.99'$   
 P.R.C. STA. = 3+45.26  
 P.T. STA. = 5+15.65

EXIST.  $\phi$  DAVIS CREEK CURVE-3 DATA  
 PI STA. = 11+60.00  
 $\Delta = 79^\circ 11' 03''$  (LT)  
 $D = 21^\circ 37' 16''$   
 $R = 265.00'$   
 $T = 219.17'$   
 $L = 366.24'$   
 $E = 78.89'$   
 P.C. STA. = 9+40.83  
 P.T. STA. = 13+07.07

EXIST.  $\phi$  DAVIS CREEK CURVE-4 DATA  
 PI STA. = 14+50.72  
 $\Delta = 7^\circ 29' 53''$  (RT)  
 $D = 13^\circ 48' 22''$   
 $R = 415.00'$   
 $T = 27.19'$   
 $L = 54.31'$   
 $E = 0.89'$   
 P.C. STA. = 14+23.53  
 P.C.C. STA. = 14+77.84

EXIST.  $\phi$  DAVIS CREEK CURVE-5 DATA  
 PI STA. = 15+37.22  
 $\Delta = 26^\circ 43' 37''$  (RT)  
 $D = 22^\circ 55' 06''$   
 $R = 250.00'$   
 $T = 59.39'$   
 $L = 116.62'$   
 $E = 6.96'$   
 P.C.C. STA. = 14+77.84  
 P.C.C. STA. = 15+94.45

EXIST.  $\phi$  DAVIS CREEK CURVE-6 DATA  
 PI STA. = 16+46.32  
 $\Delta = 12^\circ 35' 42''$  (RT)  
 $D = 12^\circ 11' 26''$   
 $R = 470.00'$   
 $T = 51.87'$   
 $L = 103.32'$   
 $E = 2.85'$   
 P.C.C. STA. = 15+94.45  
 P.T. STA. = 16+97.77

**COORDINATE DATA**

P.O.T. STA. 0+00.00  
 N. : 1636430.098  
 E. : 1097303.891

P.C. STA. 3+05.82  
 N. : 1636734.604  
 E. : 1097332.175

P.I. STA. 3+26.63  
 N. : 1636755.329  
 E. : 1097334.100

P.R.C. STA. 3+45.26  
 N. : 1636768.566  
 E. : 1097350.163

P.I. STA. 4+31.21  
 N. : 1636823.225  
 E. : 1097416.489

P.T. STA. 5+15.65  
 N. : 1636896.180  
 E. : 1097461.924

P.C. STA. 9+40.83  
 N. : 1637257.098  
 E. : 1097686.695

P.I. STA. 11+60.00  
 N. : 1637443.136  
 E. : 1097802.556

P.T. STA. 13+07.07  
 N. : 1637591.848  
 E. : 1097641.564

P.C. STA. 14+23.53  
 N. : 1637670.868  
 E. : 1097556.019

P.I. STA. 14+50.72  
 N. : 1637689.320  
 E. : 1097536.043

P.C.C. STA. 14+77.84  
 N. : 1637710.221  
 E. : 1097518.646

P.I. STA. 15+37.22  
 N. : 1637755.867  
 E. : 1097480.652

P.C.C. STA. 15+94.45  
 N. : 1637813.724  
 E. : 1097467.247

P.I. STA. 16+46.32  
 N. : 1637864.253  
 E. : 1097455.539

P.T. STA. 16+97.77  
 N. : 1637916.119  
 E. : 1097455.131

P.O.T. STA. 18+65.64  
 N. : 1638083.983  
 E. : 1097453.811

FILE NAME : L:\ID01\1186G18\W0_15\Drawings\CADD_Sheets\046251-sht-DavisCreek-882\Alignment.dgn	USER NAME : Brad Downen	DESIGNED - MJO	REVISED -	<b>STATE OF ILLINOIS DEPARTMENT OF TRANSPORTATION</b>	<b>ALIGNMENT - DAVIS CREEK CAMPGROUND KANKAKEE RIVER STATE PARK</b>	F.A. RTE.	SECTION	COUNTY	TOTAL SHEETS	SHEET NO.	
Default	PLOT SCALE : 100.0000 / 1 in.	DRAWN - RAH	REVISED -			SCALE: N.T.S.	SHEET 2 OF 7 SHEETS	STA.	TO STA.	140	86
	PLOT DATE : 4/6/2013	CHECKED - BJD	REVISED -					* WILL & KANKAKEE		CONTRACT NO. 46251	
		DATE - 3/29/2013	REVISED -					ILLINOIS FED. AID PROJECT			