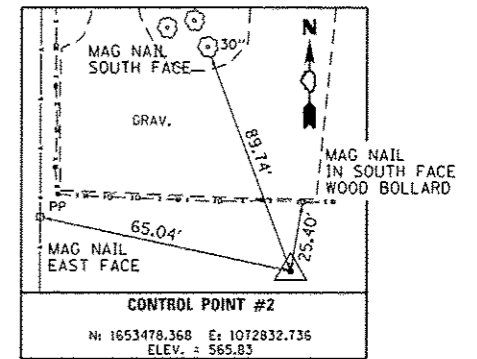
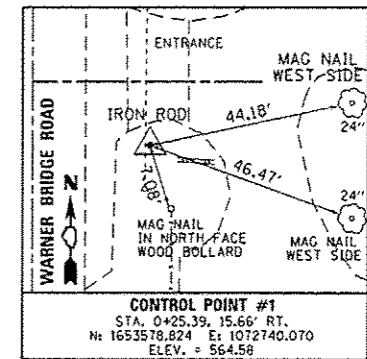
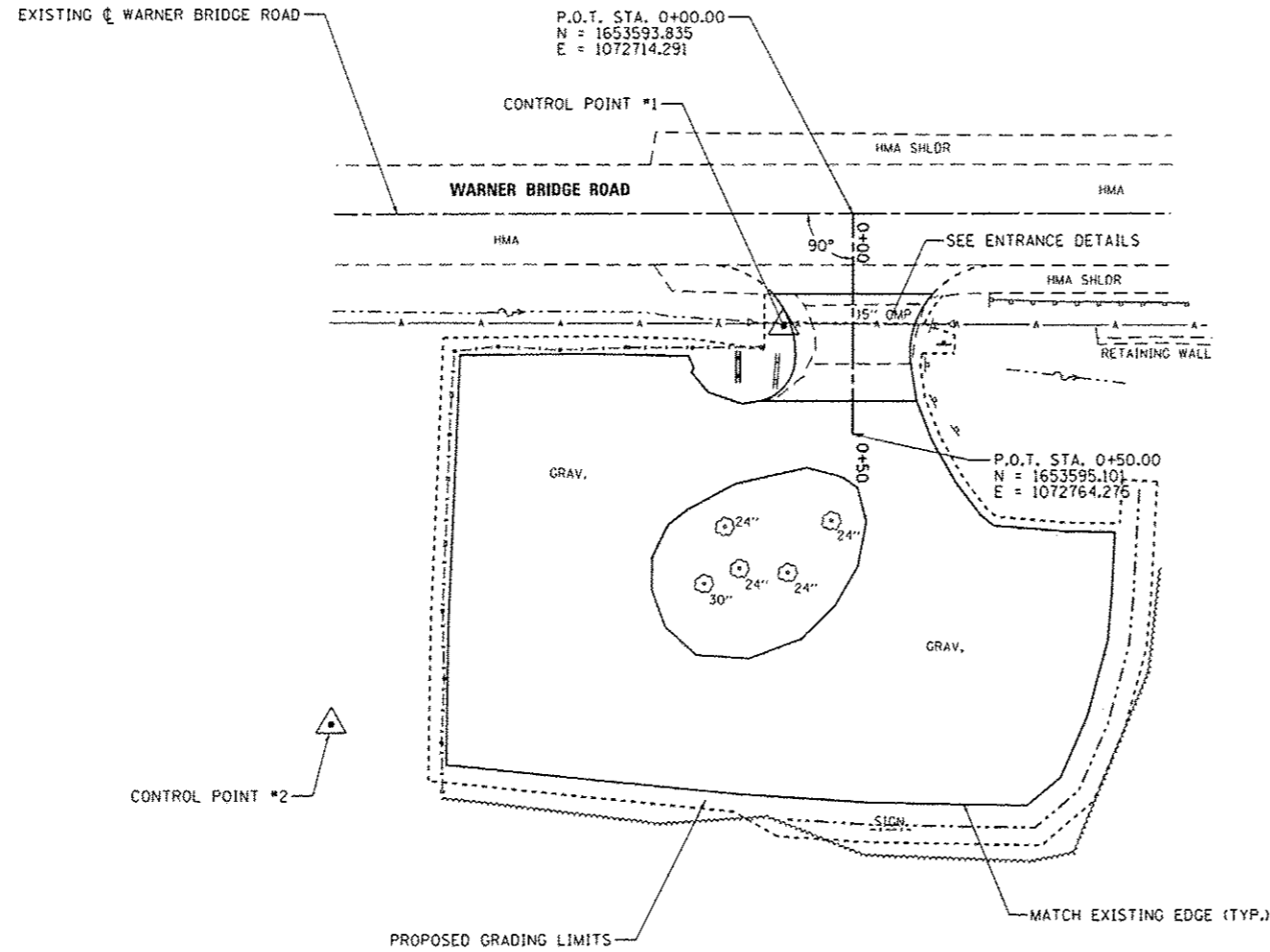
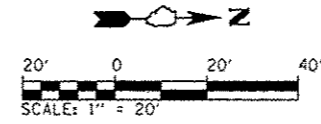


BILL OF MATERIALS - FISHING ACCESS SOUTH

ITEM	UNIT	TOTAL
EARTH EXCAVATION	CU YD	39
FURNISHED EXCAVATION	CU YD	4
TOPSOIL FURNISH AND PLACE, 4"	SO YD	224
GRADING AND SHAPING DITCHES	FOOT	140
AGGREGATE BASE COURSE, TYPE A 12"	SO YD	84
PREPARATION OF BASE	SO YD	1,219
AGGREGATE SURFACE COURSE, TYPE A	TON	232.2
AGGREGATE SURFACE COURSE, TYPE A 4"	SO YD	1,283
HOT-MIX ASPHALT BINDER COURSE, IL 19.0, N50	TON	19.3
HOT-MIX ASPHALT SURFACE COURSE, MIX "C", N50	TON	7.9
PAVEMENT REMOVAL	SO YD	44
AGGREGATE WEDGE SHOULDER, TYPE B	TON	5.7
SIGN PANEL - TYPE 1	SO FT	7
WOOD SIGN SUPPORT	FOOT	41
PAINT PAVEMENT MARKING - LINE 24"	FOOT	14
PIPE CULVERTS TO BE CLEANED 15"	FOOT	47
SIGN PANEL - TYPE 1 (SPECIAL)	SO FT	15
REMOVE SIGN COMPLETE	EACH	1
BITUMINOUS MATERIALS (PRIME COAT)	POUND	201



FILE NAME : L:\1001\1186618\WG_15\Draw\CADD_Sheets\46251-sht-fishingAccessSouth-0015.rvt	USER NAME : Brad Downen	DESIGNED - MJO	REVISED -	STATE OF ILLINOIS DEPARTMENT OF TRANSPORTATION	SITE PLAN - FISHING ACCESS SOUTH KANKAKEE RIVER STATE PARK	F.A. RTE.	SECTION	COUNTY	TOTAL SHEETS	SHEET NO.
Default	PLLOT SCALE : 40.0000' / in.	CHECKED - BJD	REVISED -			PARK ROADS	•	140	103	
Default	PLLOT DATE : 4/6/2013	DATE - 3/29/2013	REVISED -			• WILL & KANKAKEE		CONTRACT NO. 46251		
						ILLINOIS FED. AID PROJECT				