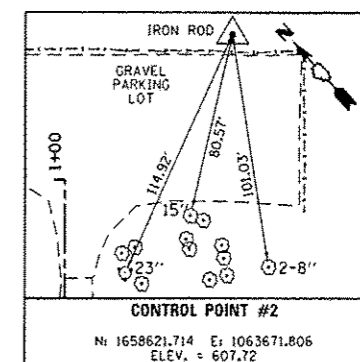
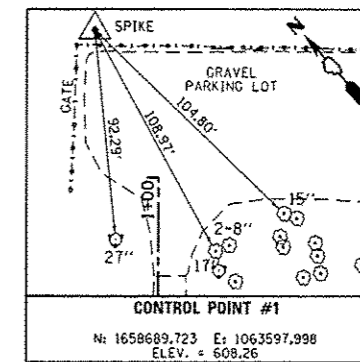
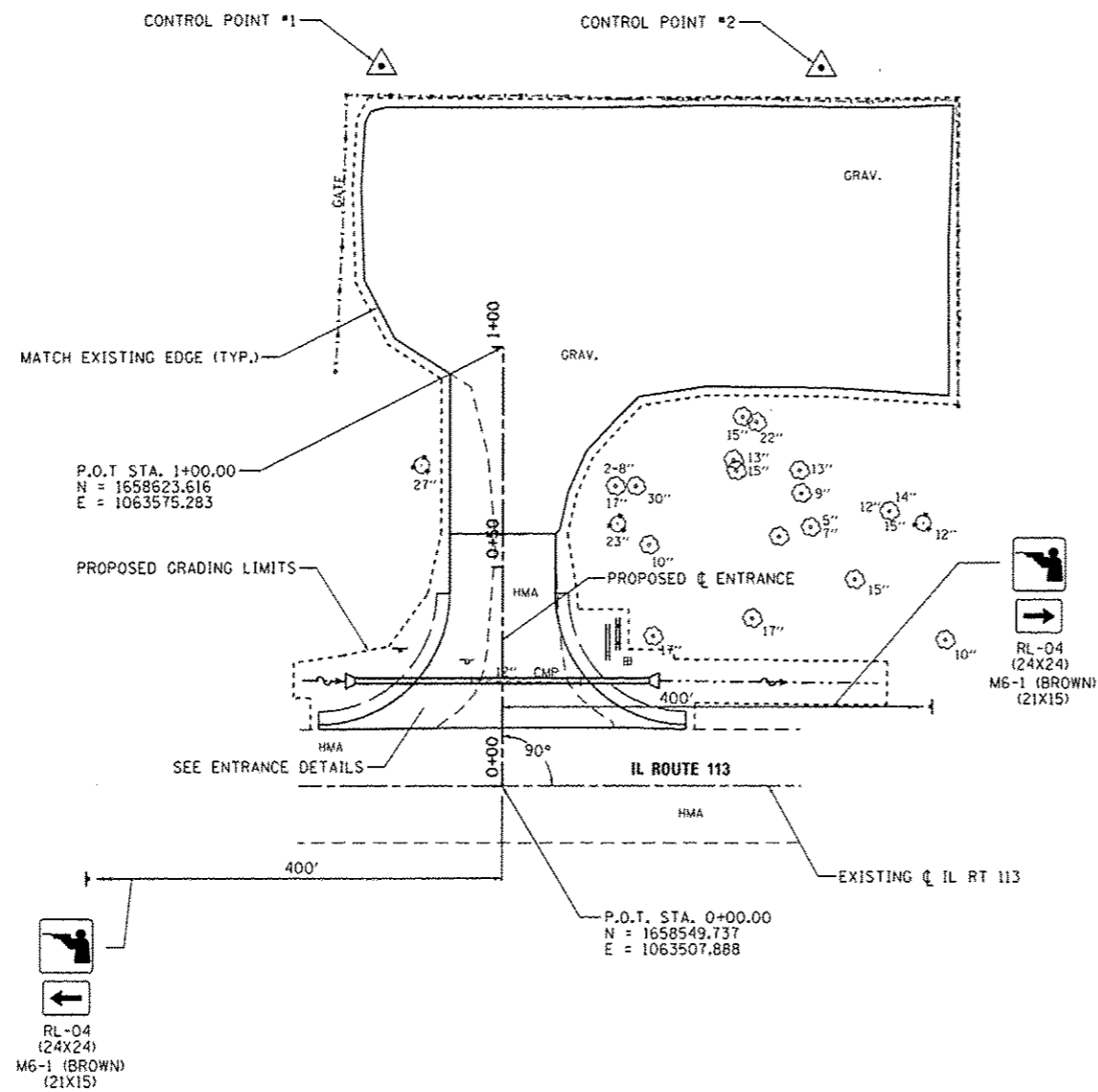
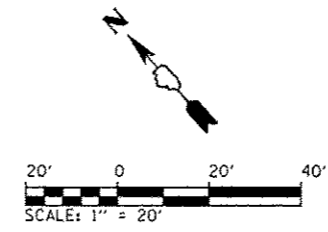


**BILL OF MATERIALS - AREA 8**

ITEM	UNIT	TOTAL
TREE REMOVAL (OVER 15 UNITS DIAMETER)	UNIT	17
EARTH EXCAVATION	CU YD	75
FURNISHED EXCAVATION	SO YD	16
TRENCH BACKFILL	CU YD	4.8
TOPSOIL FURNISH AND PLACE, 4"	SO YD	66
GRADING AND SHAPING DITCHES	FOOT	60
AGGREGATE BASE COURSE, TYPE A 8"	SO YD	35
AGGREGATE BASE COURSE, TYPE A 12"	SO YD	181
PREPARATION OF BASE	SO YD	1,017
AGGREGATE SURFACE COURSE, TYPE A 4"	SO YD	1,110
HOT-MIX ASPHALT BINDER COURSE, IL 19.0, N50	TON	41.4
HOT-MIX ASPHALT SURFACE COURSE, MIX "C", N50	TON	17.1
PAVEMENT REMOVAL	SO YD	93
AGGREGATE WEDGE SHOULDER, TYPE B	TON	16.3
PIPE CULVERT REMOVAL	FOOT	25
PIPE CULVERTS, CLASS D, TYPE 1 15"	FOOT	68
END SECTIONS 15"	EACH	2
SIGN PANEL - TYPE 1	SO FT	19
WOOD SIGN SUPPORT	FOOT	74
PAINT PAVEMENT MARKING - LINE 24"	FOOT	16
SIGN PANEL - TYPE 1 (SPECIAL)	SO FT	12
REMOVE SIGN COMPLETE	EACH	2
BITUMINOUS MATERIALS (PRIME COAT)	POUND	431



FILE NAME :	USER NAME : Brad Downen	DESIGNED - MJO	REVISED -	<b>STATE OF ILLINOIS DEPARTMENT OF TRANSPORTATION</b>	<b>SITE PLAN - AREA 8 KANKAKEE RIVER STATE PARK</b>	F.A. RTE.	SECTION	COUNTY	TOTAL SHEETS	SHEET NO.
L:\1001\106610\WD_1510\CAADD_Sheets\106251\site\area8-0815\sitePlan.dgn	DRAWN - RAM	REVISED -	PARK ROADS			*	140	114		
Default	CHECKED - BJD	REVISED -	* WILL & KANKAKEE			CONTRACT NO. 46251				
PLDT SCALE : 40,0000 ' / in.	DATE - 3/29/2013	REVISED -	ILLINOIS FED. AID PROJECT							
PLDT DATE : 4/6/2013				SCALE: 1" = 20'	SHEET 1 OF 2 SHEETS	STA. TO STA.				