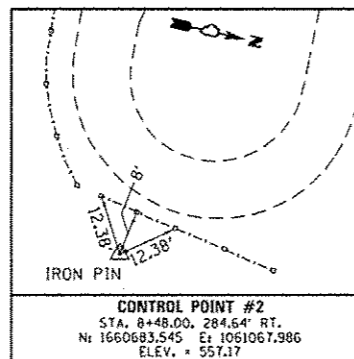
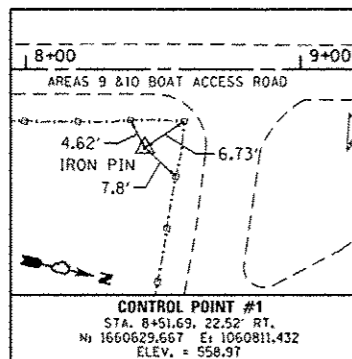


CONTROL POINT



CURVE DATA

EXIST. ϕ AREA 9 & 10 BOAT ACCESS ROAD CURVE-1 DATA
 PI STA. = 0+66.24
 $\Delta = 25^\circ 55' 25''$ (LT)
 $D = 28^\circ 38' 52''$
 $R = 200.00'$
 $T = 46.03'$
 $L = 90.49'$
 $E = 5.23'$
 P.C. STA. = 0+20.20
 P.T. STA. = 1+10.69

COORDINATE DATA

P.O.T. STA. 0+00.00
 N. : 1659792.384
 E. : 1060946.840

 P.C. STA. 0+20.20
 N. : 1659812.049
 E. : 1060951.473

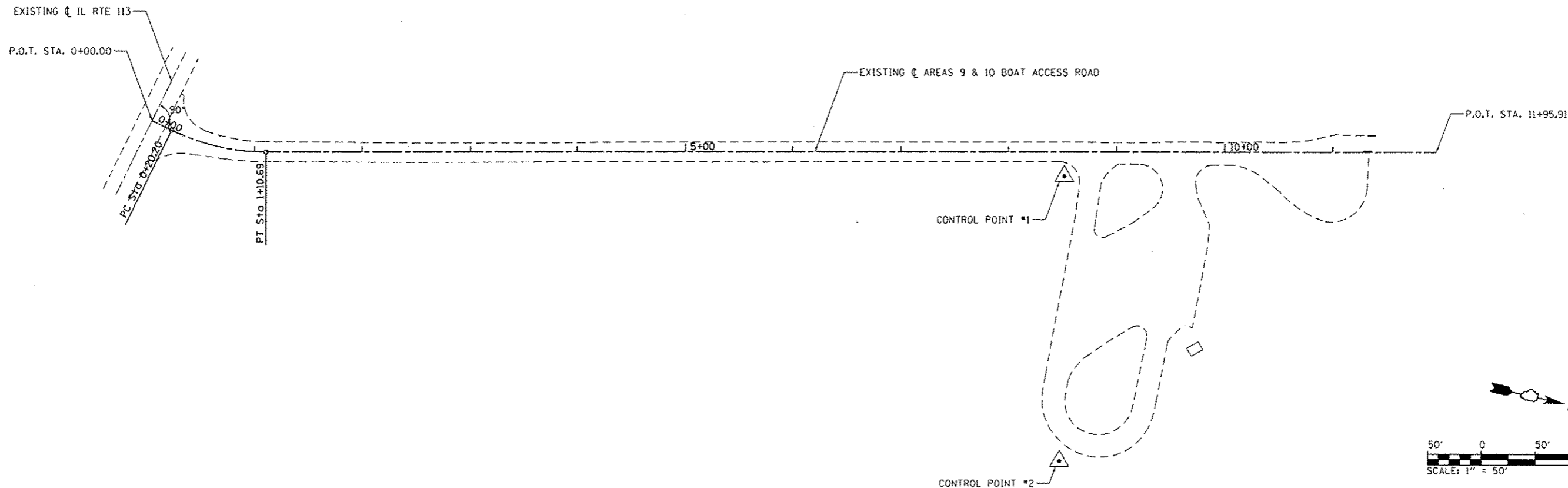
 P.I. STA. 0+66.24
 N. : 1659856.855
 E. : 1060962.030

 P.T. STA. 1+10.69
 N. : 1659901.768
 E. : 1060951.937

 P.O.T. STA. 11+95.91
 N. : 1660960.572
 E. : 1060713.990

**BILL OF MATERIALS -
 AREAS 9 & 10 BOAT ACCESS ROAD**

ITEM	UNIT	TOTAL
TREE REMOVAL (6 TO 15 UNITS DIAMETER)	UNIT	10
LEVELING BINDER (MACHINE METHOD), N50	TON	53.9
HOT-MIX ASPHALT SURFACE REMOVAL - BUTT JOINT	SO YD	184
HOT-MIX ASPHALT SURFACE COURSE, MIX "C", N50	TON	602.2
PORTLAND CEMENT CONCRETE SIDEWALK 4 INCH	SO FT	69
SIDEWALK REMOVAL	SO FT	69
AGGREGATE WEDGE SHOULDER, TYPE B	TON	47.0
SIGN PANEL - TYPE 1	SO FT	39
WOOD SIGN SUPPORT	FOOT	149
PAINT PAVEMENT MARKING - LETTERS AND SYMBOLS	SO FT	46
PAINT PAVEMENT MARKING - LINE 4"	FOOT	1,486
PAINT PAVEMENT MARKING - LINE 24"	FOOT	15
REMOVE EXISTING GATE	EACH	1
REMOVE EXISTING PARKING BLOCKS	EACH	19
PRECAST CONCRETE PARKING BLOCK	EACH	23
TUBULAR STEEL GATE	EACH	1
PIPE CULVERTS TO BE CLEANED 15"	FOOT	74
SIGN PANEL - TYPE 1 (SPECIAL)	SO FT	12
REMOVE SIGN COMPLETE	EACH	2
BITUMINOUS MATERIALS (PRIME COAT)	POUND	2,591



FILE NAME :	USER NAME : Brad Downen	DESIGNED - MJO	REVISED -	STATE OF ILLINOIS DEPARTMENT OF TRANSPORTATION	ALIGNMENT AND BILL OF MATERIALS AREA 9-10 BOAT ACCESS ROAD KANKAKEE RIVER STATE PARK	F.A. RTE.	SECTION	COUNTY	TOTAL SHEETS	SHEET NO.
L:\1007\1186618\10.15\0-CA00_Sheets\46251-shr-Area9-10BoatAccessDrive-001A1.dwg	BR&WN - RAH	REVISED -				PARK ROADS		140	118	
Default	PLOT SCALE : 100.0000' / in.	CHECKED - BJD	REVISED -			* WILL & KANKAKEE		CONTRACT NO. 46251		
	PLOT DATE : 4/6/2013	DATE - 3/29/2013	REVISED -			ILLINOIS FED. AID PROJECT				