

PROP. C EAST ENTRANCE DR.
 CURVE-1 DATA
 PI STA. = 10+92.49
 N = 816863.911, E = 999839.348
 $\Delta = 5^\circ 10' 24''$ (RT)
 D = 14' 19' 26"
 R = 400.00'
 T = 18.07'
 L = 36.12'
 E = 0.41'
 P.C. STA = 10+74.42
 N = 816864.222, E = 999857.416
 P.T. STA = 11+10.53
 N = 816865.231, E = 999821.326

PROP. C EAST ENTRANCE DR.
 CURVE-2 DATA
 PI STA. = 13+10.94
 N = 816879.071, E = 999621.458
 $\Delta = 7^\circ 39' 13''$ (LT)
 D = 14' 19' 26"
 R = 400.00'
 T = 26.76'
 L = 53.43'
 E = 0.89'
 P.C. STA = 12+84.18
 N = 816877.916, E = 999648.142
 P.T. STA = 13+37.61
 N = 816878.254, E = 999594.751

PROP. C EAST ENTRANCE DR.
 CURVE-3 DATA
 PI STA. = 16+38.99
 N = 816860.042, E = 999293.920
 $\Delta = 22^\circ 52' 06''$ (RT)
 D = 10' 25' 03"
 R = 550.00'
 T = 111.24'
 L = 219.52'
 E = 11.14'
 P.C. STA = 15+27.75
 N = 816866.764, E = 999404.957
 P.T. STA = 17+47.27
 N = 816896.999, E = 999188.998

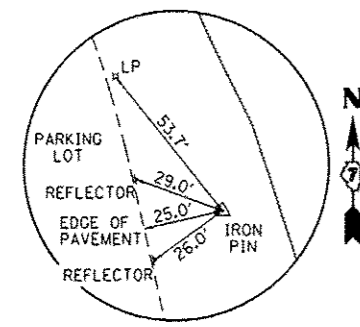
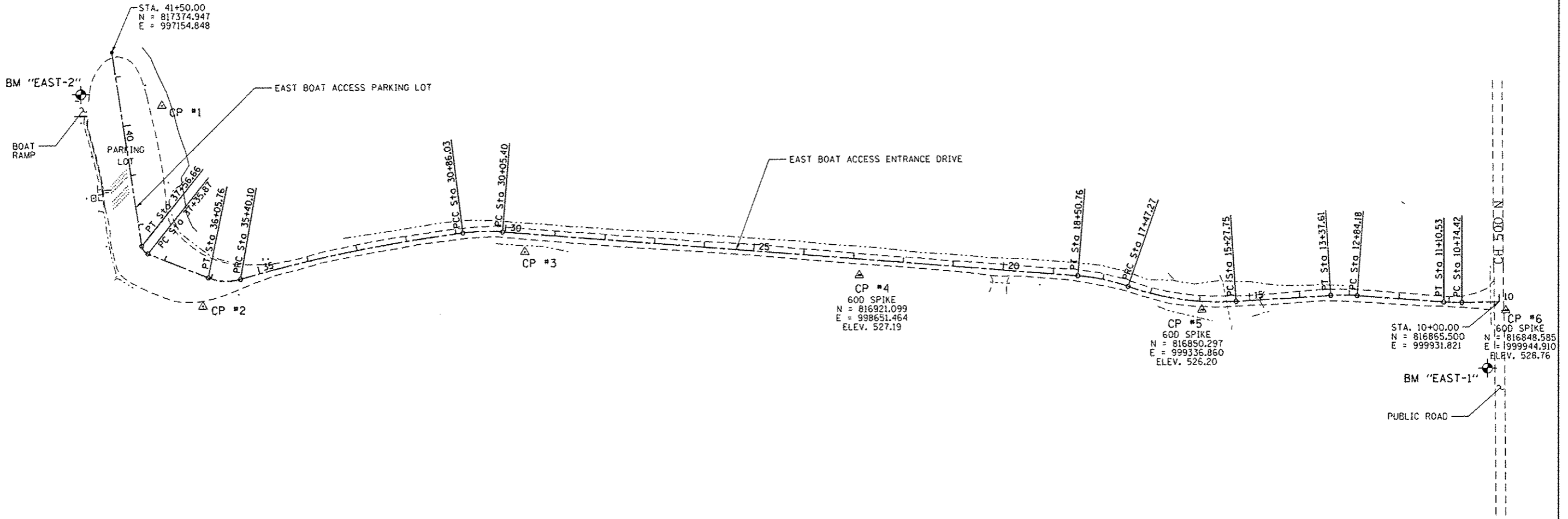
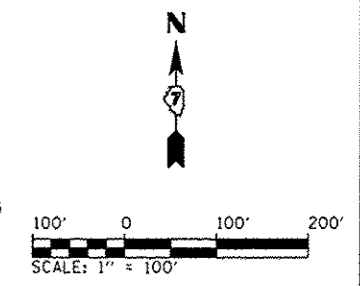
PROP. C EAST ENTRANCE DR.
 CURVE-4 DATA
 PI STA. = 17+99.30
 N = 816914.285, E = 999139.923
 $\Delta = 14^\circ 49' 22''$ (LT)
 D = 14' 19' 26"
 R = 400.00'
 T = 52.03'
 L = 103.48'
 E = 3.37'
 P.C. STA = 17+47.27
 N = 816896.999, E = 999188.998
 P.T. STA = 18+50.76
 N = 816918.441, E = 999088.056

PROP. C EAST ENTRANCE DR.
 CURVE-5 DATA
 PI STA. = 30+45.85
 N = 817014.173, E = 997893.323
 $\Delta = 11^\circ 33' 03''$ (LT)
 D = 14' 19' 26"
 R = 400.00'
 T = 40.46'
 L = 80.64'
 E = 2.04'
 P.C. STA = 30+05.40
 N = 817010.665, E = 997937.105
 P.T. STA = 30+86.03
 N = 817008.987, E = 997856.619

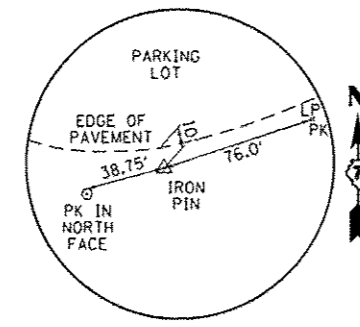
PROP. C EAST ENTRANCE DR.
 CURVE-6 DATA
 PI STA. = 33+13.53
 N = 816981.383, E = 997630.810
 $\Delta = 8^\circ 54' 57''$ (LT)
 D = 1' 57' 49"
 R = 2,918.00'
 T = 227.49'
 L = 454.07'
 E = 8.85'
 P.C. STA = 30+86.03
 N = 817008.987, E = 997856.619
 P.T. STA = 35+40.10
 N = 816919.115, E = 997412.002

PROP. C EAST ENTRANCE DR.
 CURVE-7 DATA
 PI STA. = 35+74.16
 N = 816909.793, E = 997379.241
 $\Delta = 37^\circ 37' 08''$ (RT)
 D = 57' 17' 45"
 R = 100.00'
 T = 34.06'
 L = 65.66'
 E = 5.64'
 P.C. STA = 35+40.10
 N = 816919.115, E = 997412.002
 P.T. STA = 36+05.76
 N = 816922.405, E = 997347.602

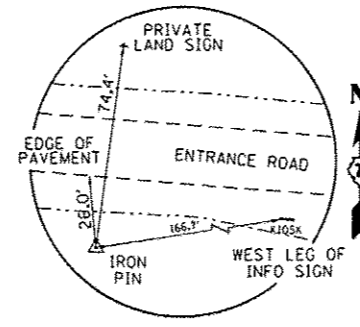
PROP. C EAST ENTRANCE DR.
 CURVE-8 DATA
 PI STA. = 37+47.31
 N = 816974.822, E = 997216.107
 $\Delta = 59^\circ 33' 42''$ (RT)
 D = 286' 28' 44"
 R = 20.00'
 T = 11.45'
 L = 20.79'
 E = 3.04'
 P.C. STA = 37+35.87
 N = 816970.582, E = 997226.743
 P.T. STA = 37+56.66
 N = 816986.134, E = 997214.379



CONTROL POINT #1
 N: 817267.548
 E: 997255.348
 ELEV. = 513.19



CONTROL POINT #2
 N: 816865.236
 E: 997336.530
 ELEV. = 522.31



CONTROL POINT #3
 N: 816970.360
 E: 997981.686
 ELEV. = 527.19

BENCHMARKS:
 BM "EAST-1"
 COTTON SPINDLE EAST FACE PP,
 FIRST POLE SOUTH OF
 EAST SIDE ACCESS ENTRANCE
 ELEV. = 529.03
 BM "EAST-2"
 COTTON SPINDLE EAST FACE LP,
 LP JUST NORTH OF BOAT RAMP
 ELEV. = 513.19

FILE NAME:	USER NAME: Brian Bond	DESIGNED: BMB	REVISED:	STATE OF ILLINOIS DEPARTMENT OF TRANSPORTATION	SITE PLAN - EAST BOAT ACCESS AREA NEWTON LAKE STATE FISH AND WILDLIFE AREA				F.A. R.T.E.	SECTION	COUNTY	TOTAL SHEETS	SHEET NO.
L:\1001\1186618\10\13\00-1\CADD\Sheets\046255_SitePlan - Cost.dgn	DRAWN: RAH	CHECKED: JMM	REVISED:		N/A	PARKS ROADS	JASPER	66	43				
Default	PLOT SCALE: 200.0000' / in.	DATE: 3/29/2013	REVISED:		SCALE: AS NOTED SHEET OF SHEETS STA. TO STA.				CONTRACT NO. 46255				
	PLOT DATE: 3/29/2013	DATE: 3/29/2013	REVISED:		ILLINOIS FED. AID PROJECT								