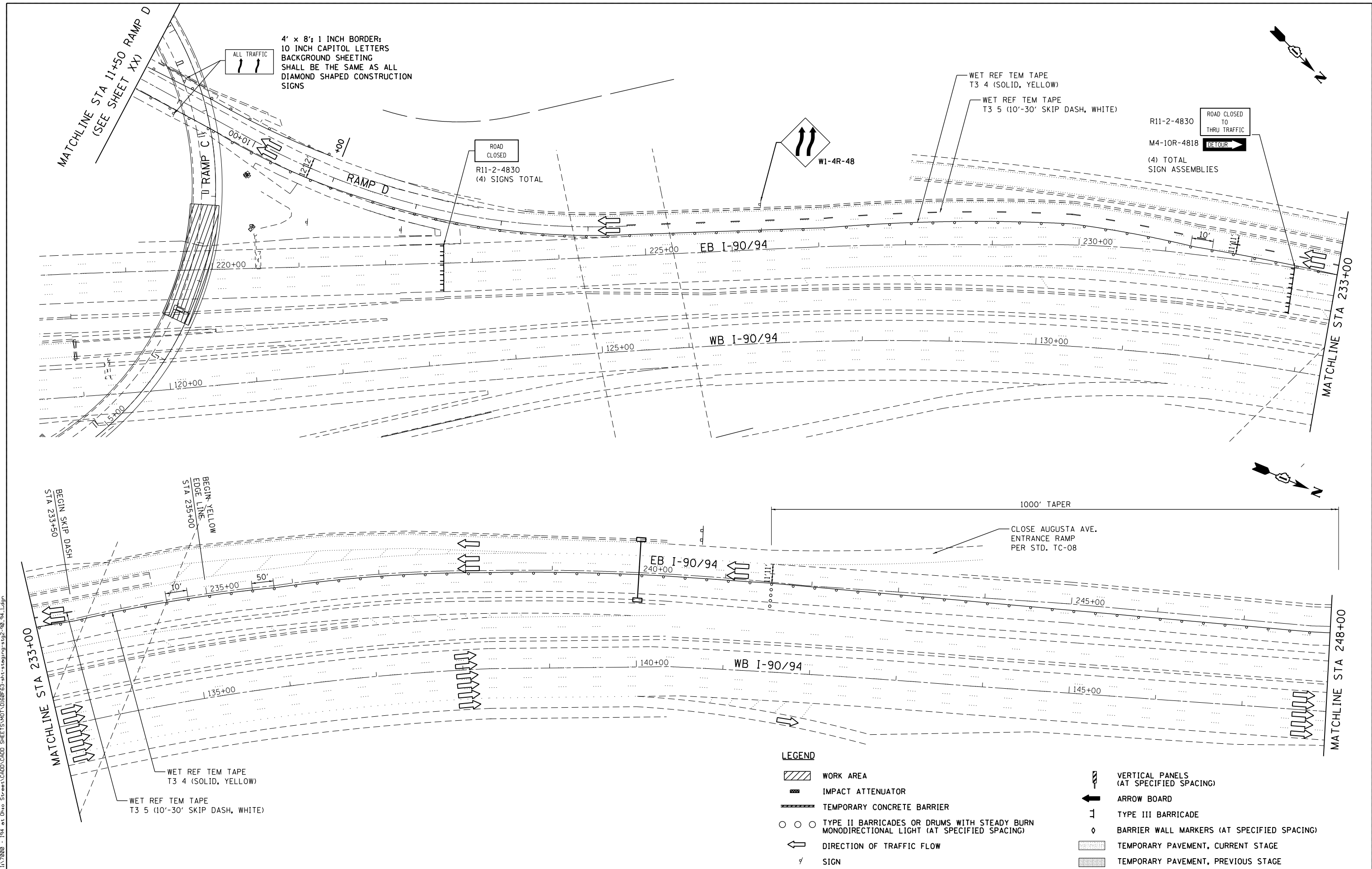


FILE NAME = I:\7000 - 194 at Ohio Street\CADD\CADD_SHEETS\MOT\DI60F63-ht-staging-194-94.dgn



4' x 8' 1 INCH BORDER;
10 INCH CAPITAL LETTERS
BACKGROUND SHEETING
SHALL BE THE SAME AS ALL
DIAMOND SHAPED CONSTRUCTION
SIGNS



ROAD
CLOSED
R11-2-4830
(4) SIGNS TOTAL



WET REF TEM TAPE
T3 4 (SOLID, YELLOW)
WET REF TEM TAPE
T3 5 (10'-30' SKIP DASH, WHITE)

R11-2-4830
ROAD CLOSED
THRU TRAFFIC
M4-10R-4818
DETOUR
(4) TOTAL
SIGN ASSEMBLIES

LEGEND

- WORK AREA
- IMPACT ATTENUATOR
- TEMPORARY CONCRETE BARRIER
- TYPE II BARRICADES OR DRUMS WITH STEADY BURN MONODIRECTIONAL LIGHT (AT SPECIFIED SPACING)
- DIRECTION OF TRAFFIC FLOW
- SIGN
- VERTICAL PANELS (AT SPECIFIED SPACING)
- ARROW BOARD
- TYPE III BARRICADE
- BARRIER WALL MARKERS (AT SPECIFIED SPACING)
- TEMPORARY PAVEMENT, CURRENT STAGE
- TEMPORARY PAVEMENT, PREVIOUS STAGE

COLLINS ENGINEERS

USER NAME = r9e11
PLOT SCALE = 100.000000' / in.
PLOT DATE = 3/25/2013

DESIGNED -	REVISED -
DRAWN -	REVISED -
CHECKED -	REVISED -
DATE -	REVISED -

**STATE OF ILLINOIS
DEPARTMENT OF TRANSPORTATION**

**STAGING AND TRAFFIC CONTROL
I-90/94 STAGE II
SUBSTAGE A**

SCALE: SHEET NO. OF SHEETS STA. TO STA.

F.A.I. RTE.	SECTION	COUNTY	TOTAL SHEETS	SHEET NO.
90/94	0303-474HB-R	COOK	368	84

CONTRACT NO. 60F63
FED. ROAD DIST. NO. 1 ILLINOIS FED. AID PROJECT