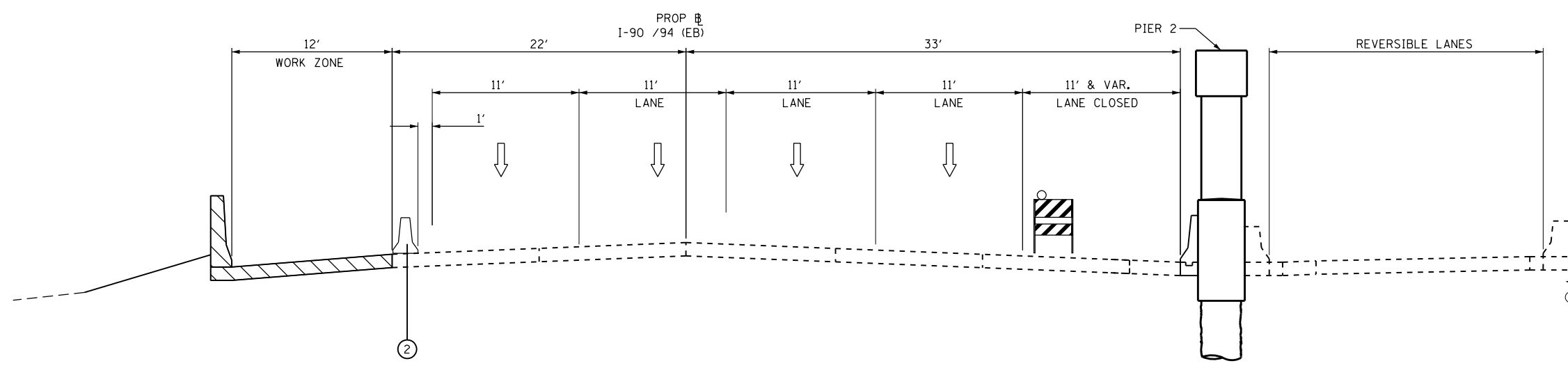


TYPICAL SECTION - SUBSTAGE IIIC
I-90/ 94 (KENNEDY EXPRESSWAY)
WESTBOUND LANES



TYPICAL SECTION - SUBSTAGE IIIC
I-90/ 94 (KENNEDY EXPRESSWAY)
EASTBOUND LANES

PROPOSED LEGEND:

- ① MOVEABLE TRAFFIC BARRIER
- ② TEMPORARY CONCRETE BARRIER
- ③ WET REFLECTIVE TEMPORARY TAPE TYPE III - LINE 5" WHITE (10' DASH, 30' SKIP)

FILE NAME = \\collinsengr.com\1\adate\1\Posanden\DDCS\7000 - I94 at Ohio Street\CADD\SHEETS\MOT\DI60F63-ph-tt-staging-tp-stag3-90-94.dgn



USER NAME = rge11	DESIGNED -	REVISED -
PLOT SCALE = 10.0000' / in.	DRAWN -	REVISED -
PLOT DATE = 3/25/2013	CHECKED -	REVISED -
	DATE -	REVISED -

STATE OF ILLINOIS
DEPARTMENT OF TRANSPORTATION

STAGING AND TRAFFIC CONTROL
I-90/94 TYPICAL SECTIONS
STAGE III

SCALE: SHEET NO. OF SHEETS STA. TO STA.

F.A.I. RTE.	SECTION	COUNTY	TOTAL SHEETS	SHEET NO.
90/94	0303-474HB-R	COOK	368	98
CONTRACT NO. 60F63				
FED. ROAD DIST. NO. 1 ILLINOIS FED. AID PROJECT				