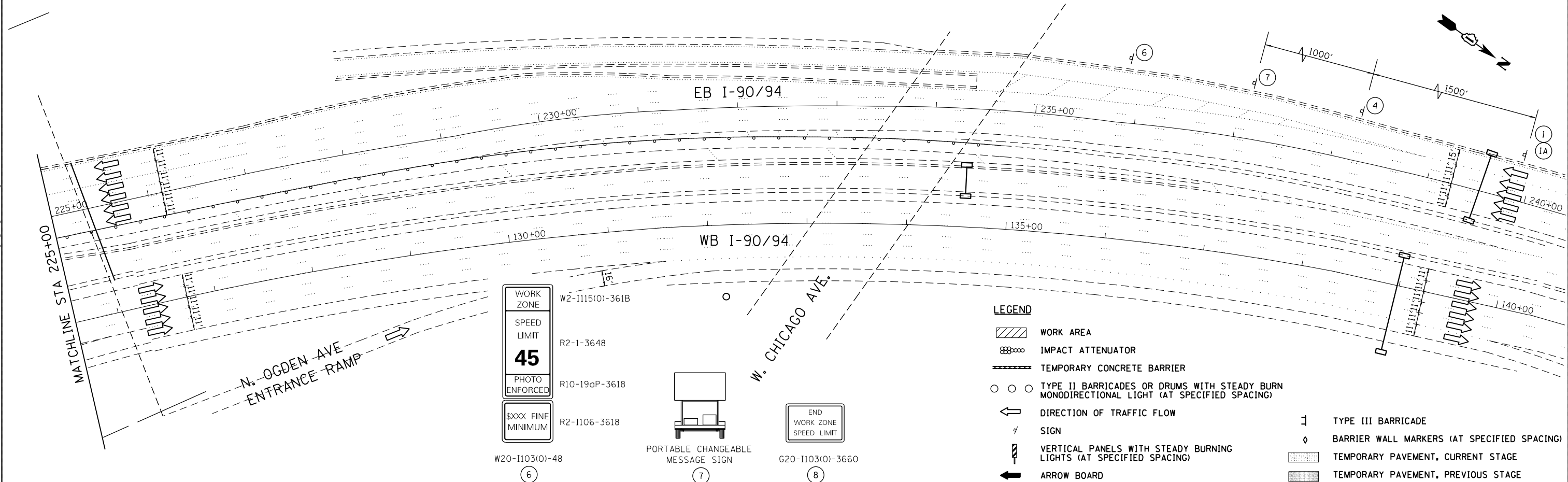


- NOTES:
- SEE SPECIAL PROVISIONS FOR BARRIER WALL DELINEATION REQUIREMENTS.
  - SEE SPECIAL PROVISIONS FOR WORK RESTRICTIONS. MOVEABLE BARRIER TO BE RELOCATED TO LOCATION SHOWN IN TYPICAL SECTIONS (SUBSTAGE IIIB) DURING HOURS WHEN WORK IS NOT ALLOWED.



FILE NAME = I:\7000 - 194 at Ohio Street\CADD\CADD\_SHEETS\MOT\160663-hst-staging-sig3-90\_94.dgn

**COLLINS ENGINEERS**

USER NAME = r9e11	DESIGNED -	REVISED -
PLOT SCALE = 100.000000' / in.	DRAWN -	REVISED -
PLOT DATE = 3/25/2013	CHECKED -	REVISED -
	DATE -	REVISED -

**STATE OF ILLINOIS  
DEPARTMENT OF TRANSPORTATION**

SCALE:	SHEET NO. OF SHEETS	STA. TO STA.
--------	---------------------	--------------

**STAGING AND TRAFFIC CONTROL  
I-90/94 (KENNEDY EXPRESSWAY)  
STAGE III - SUBSTAGE A**

F.A.I. RTE.	SECTION	COUNTY	TOTAL SHEETS	SHEET NO.
90/94	0303-474HB-R	COOK	368	104
CONTRACT NO. 60F63				
FED. ROAD DIST. NO. 1 ILLINOIS FED. AID PROJECT				