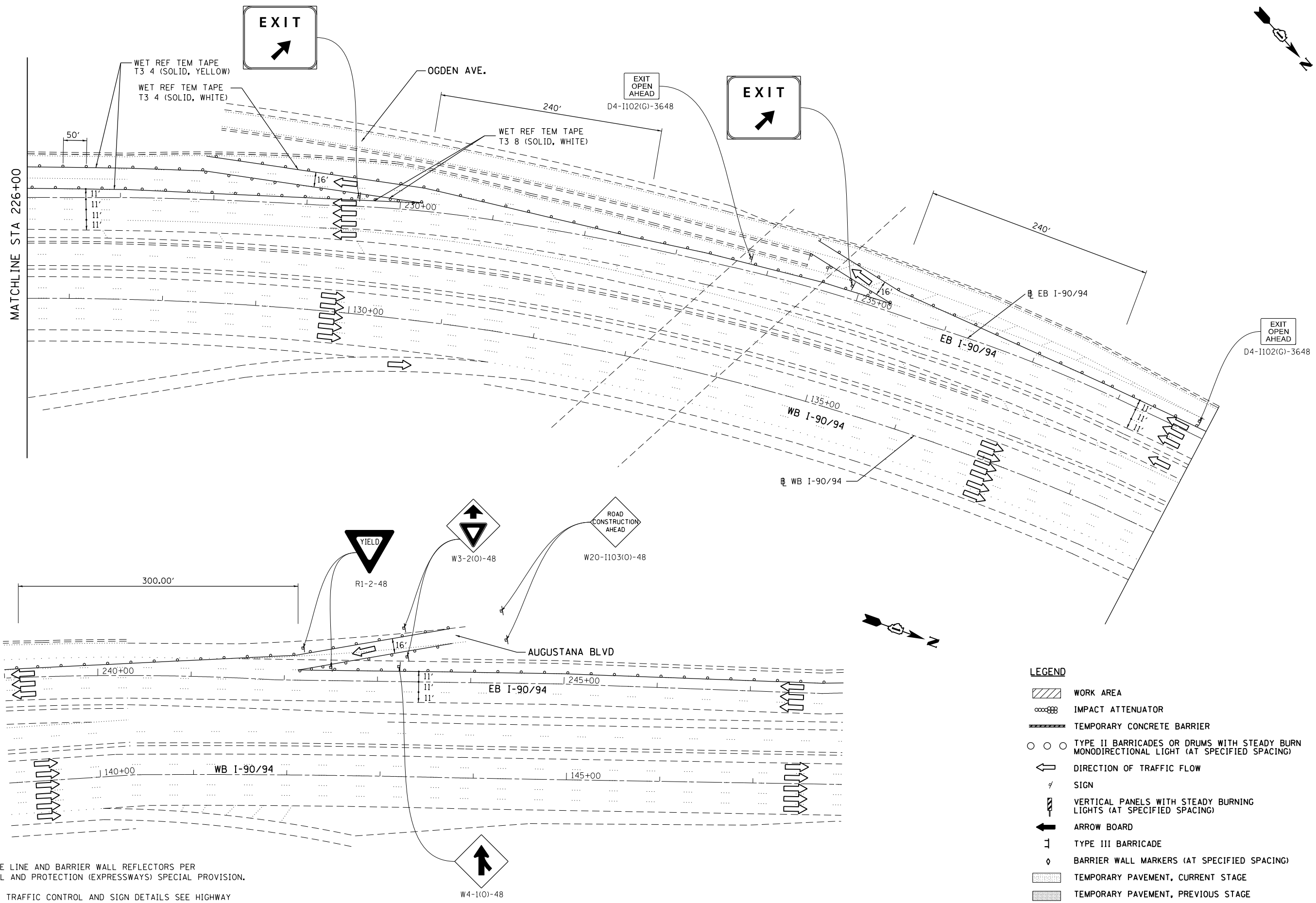


FILE NAME = I:\7000 - 194 at Ohio Street\CADD\CADD_SHEETS\MOT\1160663-ht-staging-194-RampD_20.dgn



- NOTES:
1. INSTALL 6" EDGE LINE AND BARRIER WALL REFLECTORS PER TRAFFIC CONTROL AND PROTECTION (EXPRESSWAYS) SPECIAL PROVISION.
 2. FOR ADDITIONAL TRAFFIC CONTROL AND SIGN DETAILS SEE HIGHWAY STANDARDS 701400, 701401, & 701411.

LEGEND

- WORK AREA
- IMPACT ATTENUATOR
- TEMPORARY CONCRETE BARRIER
- TYPE II BARRICADES OR DRUMS WITH STEADY BURN MONODIRECTIONAL LIGHT (AT SPECIFIED SPACING)
- DIRECTION OF TRAFFIC FLOW
- SIGN
- VERTICAL PANELS WITH STEADY BURNING LIGHTS (AT SPECIFIED SPACING)
- ARROW BOARD
- TYPE III BARRICADE
- BARRIER WALL MARKERS (AT SPECIFIED SPACING)
- TEMPORARY PAVEMENT, CURRENT STAGE
- TEMPORARY PAVEMENT, PREVIOUS STAGE

COLLINS ENGINEERS

USER NAME = rge11	DESIGNED -	REVISED -
PLOT SCALE = 100.000' / in.	DRAWN -	REVISED -
PLOT DATE = 3/25/2013	CHECKED -	REVISED -
	DATE -	REVISED -

**STATE OF ILLINOIS
DEPARTMENT OF TRANSPORTATION**

**STAGING AND TRAFFIC CONTROL
I-90/94
STAGE III - SUBSTAGE C**

SCALE:	SHEET NO.	OF	SHEETS	STA.	TO	STA.
--------	-----------	----	--------	------	----	------

F.A.I. RE.	SECTION	COUNTY	TOTAL SHEETS	SHEET NO.
90/94	0303-474HB-R	COOK	368	106
CONTRACT NO. 60F63				
FED. ROAD DIST. NO. 1 ILLINOIS FED. AID PROJECT				