
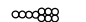



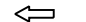
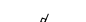



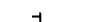

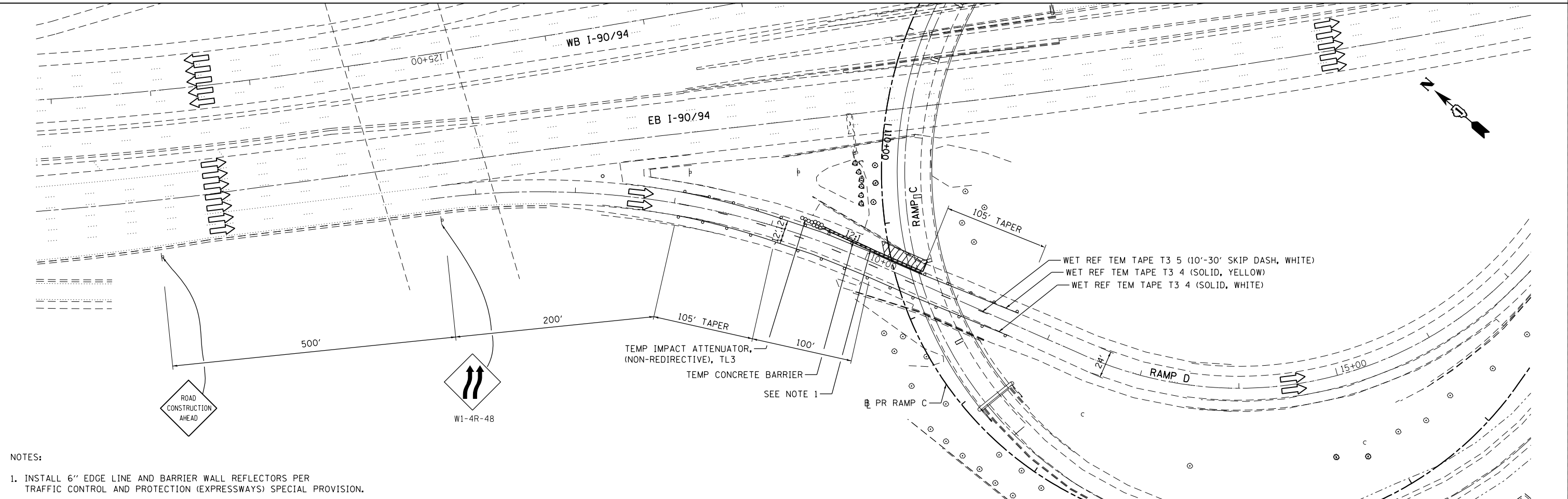
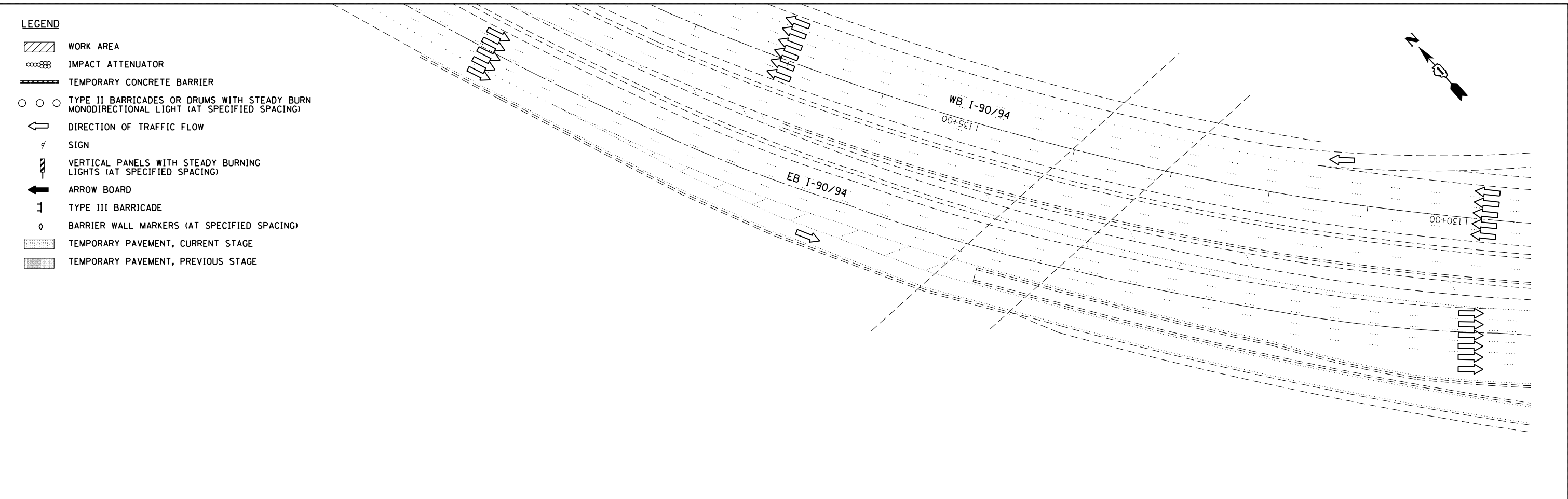


LEGEND

-  WORK AREA
-  IMPACT ATTENUATOR
-  TEMPORARY CONCRETE BARRIER
-  TYPE II BARRICADES OR DRUMS WITH STEADY BURN MONODIRECTIONAL LIGHT (AT SPECIFIED SPACING)
-  DIRECTION OF TRAFFIC FLOW
-  SIGN
-  VERTICAL PANELS WITH STEADY BURNING LIGHTS (AT SPECIFIED SPACING)
-  ARROW BOARD
-  TYPE III BARRICADE
-  BARRIER WALL MARKERS (AT SPECIFIED SPACING)
-  TEMPORARY PAVEMENT, CURRENT STAGE
-  TEMPORARY PAVEMENT, PREVIOUS STAGE

FILE NAME = I:\7000 - 194 at Ohio Street\CADD\CADD_SHEETS\MOT\160663-ht-staging-13-RampD_2.dgn



- NOTES:**
1. INSTALL 6" EDGE LINE AND BARRIER WALL REFLECTORS PER TRAFFIC CONTROL AND PROTECTION (EXPRESSWAYS) SPECIAL PROVISION.

COLLINS ENGINEERS

USER NAME = rge11	DESIGNED -	REVISED -
PLOT SCALE = 100.000' / in.	DRAWN -	REVISED -
PLOT DATE = 3/25/2013	CHECKED -	REVISED -
	DATE -	REVISED -

**STATE OF ILLINOIS
DEPARTMENT OF TRANSPORTATION**

**STAGING AND TRAFFIC CONTROL
RAMP D STAGE III
SUBSTAGE A**

SCALE: SHEET NO. OF SHEETS STA. TO STA.

F.A.I. RTE. 90/94	SECTION 0303-474HB-R	COUNTY COOK	TOTAL SHEETS 368	SHEET NO. 114
CONTRACT NO. 60F63				
FED. ROAD DIST. NO. 1 ILLINOIS FED. AID PROJECT				