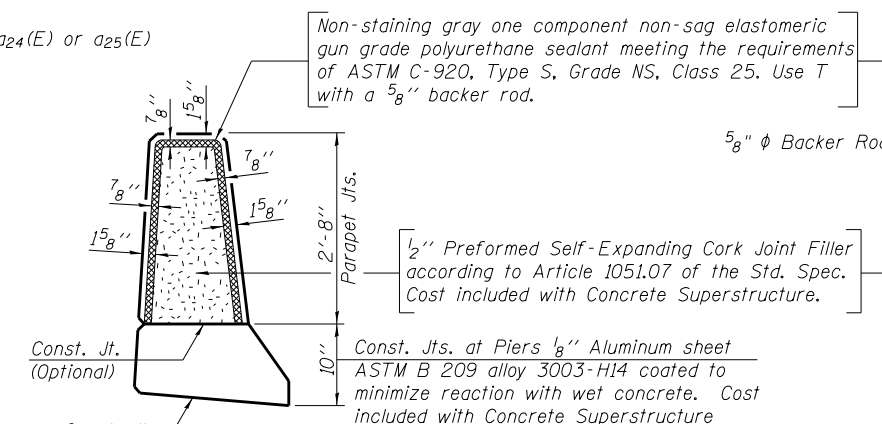
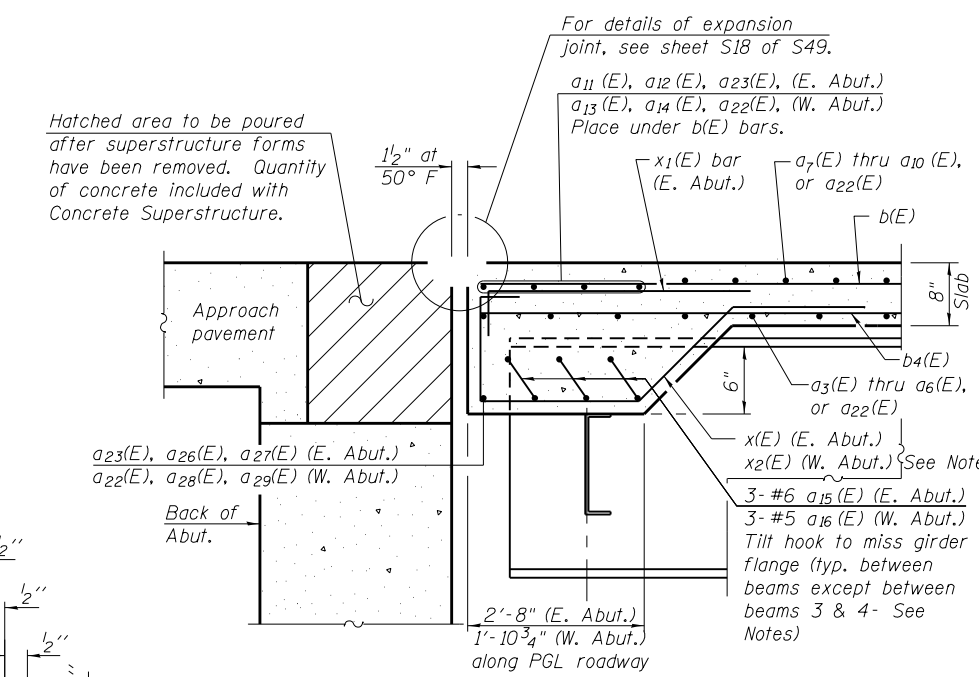


SECTION THRU PARAPET

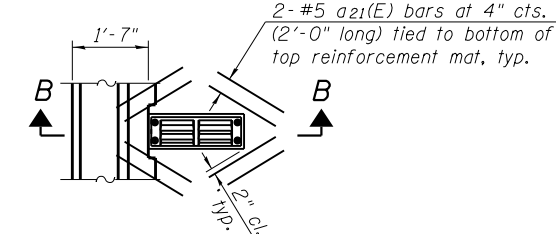


PARAPET JOINT DETAILS



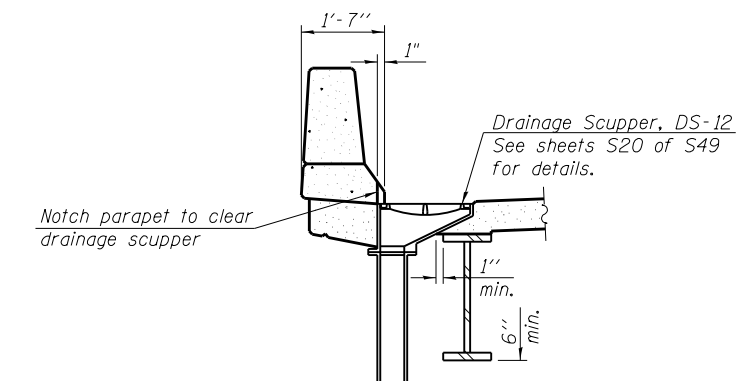
SECTION A-A

Notes:
 For location of Section A-A see Sheet S14 of S49.
 See sheet S19 of S49 for drainage details.
 For Bottom rebar between beams 3 & 4 use:
 3-#6 a17(E) bars and 3-Bar Splicers (E) for #6 a17(E) bars (Stage I) to 3-#6 a23(E) bars and 3-Mechanical Splicers (E) for #6 a23(E) bars (Closure Pour) to 3-#6 a18(E) (Stage III) at the East Abutment, 3-#5 a19(E) and 3-Bar Splicers (E) for #5 a19(E) bars (Stage I) to 3-#5 a22(E) bars and 3-Mechanical Splicers (E) (Closure Pour) for #5 a22(E) bars to 3-#5 a20(E) (Stage III) at the West Abutment. Tilt hooks to miss girder flange.
 5-#5 x(E) or x2(E) bars, typ. between beams except 6 bars between Beams 3 & 4 (2 Stage I, 2 Stage III, 2 Closure Pour).



PLAN

Note:
 Cut longitudinal reinforcement to clear drainage scupper.



SECTION B-B

COLLINS ENGINEERS
 133 N. Rocker Dr.
 Suite 900
 Chicago, IL 60646
 Tel: (312) 704-9300
 Fax: (312) 704-9320
 www.collinsengr.com
 ILLINOIS PROFESSIONAL DESIGN FIRM LICENSE NO. 184-000993

USER NAME =	DESIGNED - MAH	REVISED
	CHECKED - LDB	REVISED
PLOT SCALE =	DRAWN - DR	REVISED
PLOT DATE =	CHECKED - JMH	REVISED

**STATE OF ILLINOIS
 DEPARTMENT OF TRANSPORTATION**

**SUPERSTRUCTURE DETAILS
 STRUCTURE NO. 016-1322**

F.A.P. RTE.	SECTION	COUNTY	TOTAL SHEETS	SHEET NO.
0383	0303-474HB-R	COOK	368	208
CONTRACT NO. 60F63				
ILLINOIS FED. AID PROJECT				

SHEET NO. S16 OF S49 SHEETS