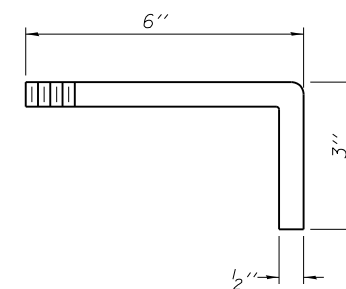
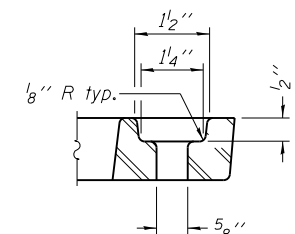
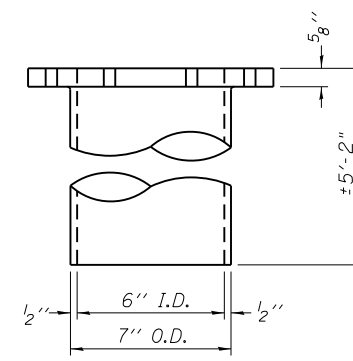
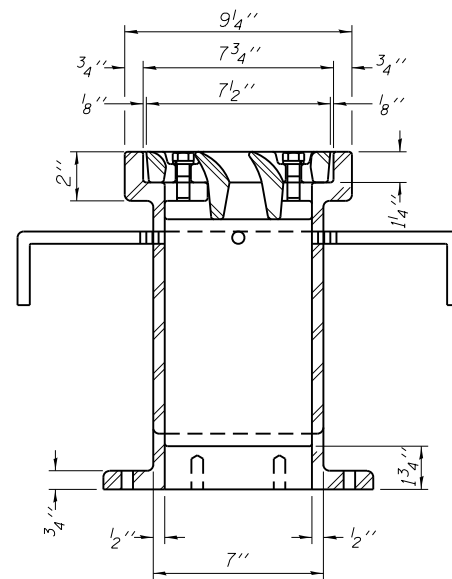
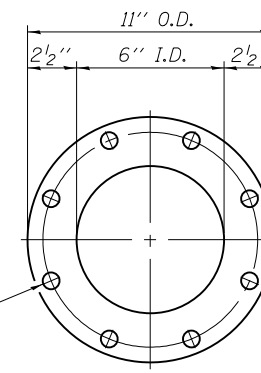


See sheet S16 of S49 for scupper location relative to parapet.



Drill and tap 8 holes for 1/2"-13 bolts on a 9 1/2" φ bolt circle. (2 blind holes are 1/4" deep, 6 thru holes)



BILL OF MATERIAL

| ITEM | UNIT | QUANTITY |
|-------------------------|------|----------|
| Drainage Scupper, DS-12 | Each | 1 |

DS-12

7-1-10

COLLINS ENGINEERS
133 N. Wacker Dr.
Suite 900
Chicago, IL 60606
Tel: (312) 704-3300
Fax: (312) 704-9320
www.collinsengr.com
ILLINOIS PROFESSIONAL DESIGN FIRM LICENSE NO. 184-000993

| | | |
|--------------|----------------|---------|
| USER NAME = | DESIGNED - MAH | REVISED |
| PLOT SCALE = | CHECKED - LDB | REVISED |
| PLOT DATE = | DRAWN - DR | REVISED |
| | CHECKED - JMH | REVISED |

STATE OF ILLINOIS
DEPARTMENT OF TRANSPORTATION

DRAINAGE SCUPPER, DS-12
STRUCTURE NO. 016-1322

SHEET NO. S20 OF S49 SHEETS

| F.A.P. RTE. | SECTION | COUNTY | TOTAL SHEETS | SHEET NO. |
|---------------------------|--------------|--------|--------------|-----------|
| 0383 | 0303-474HB-R | COOK | 368 | 212 |
| CONTRACT NO. 60F63 | | | | |
| ILLINOIS FED. AID PROJECT | | | | |