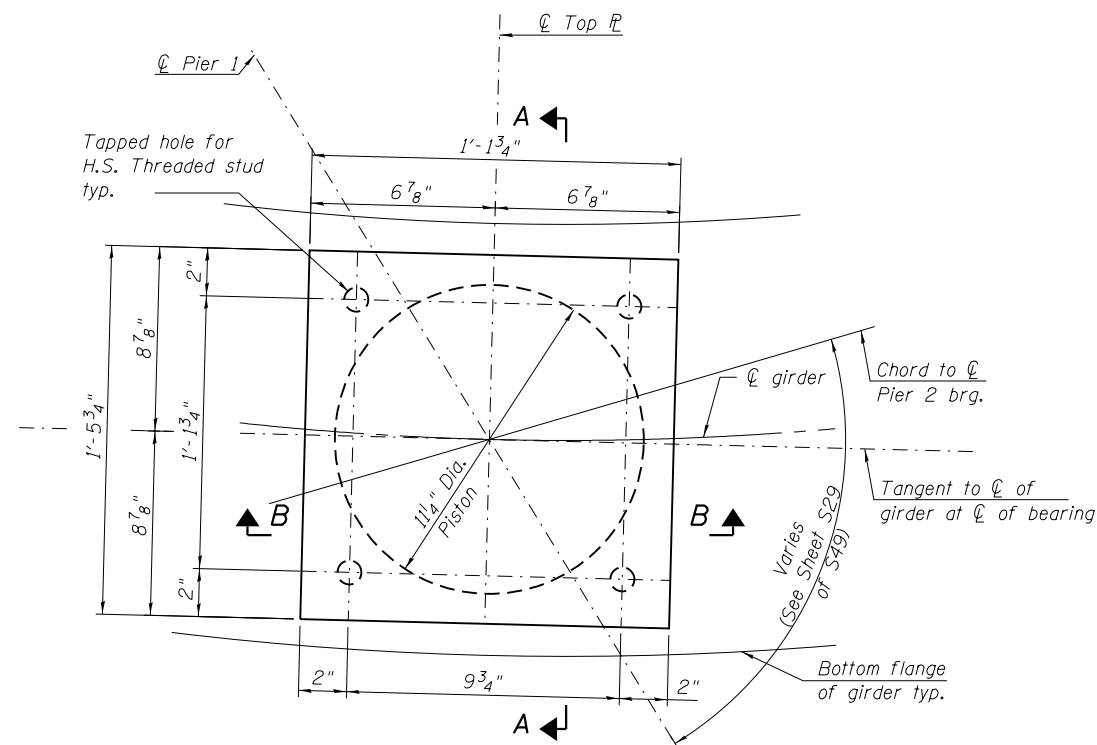
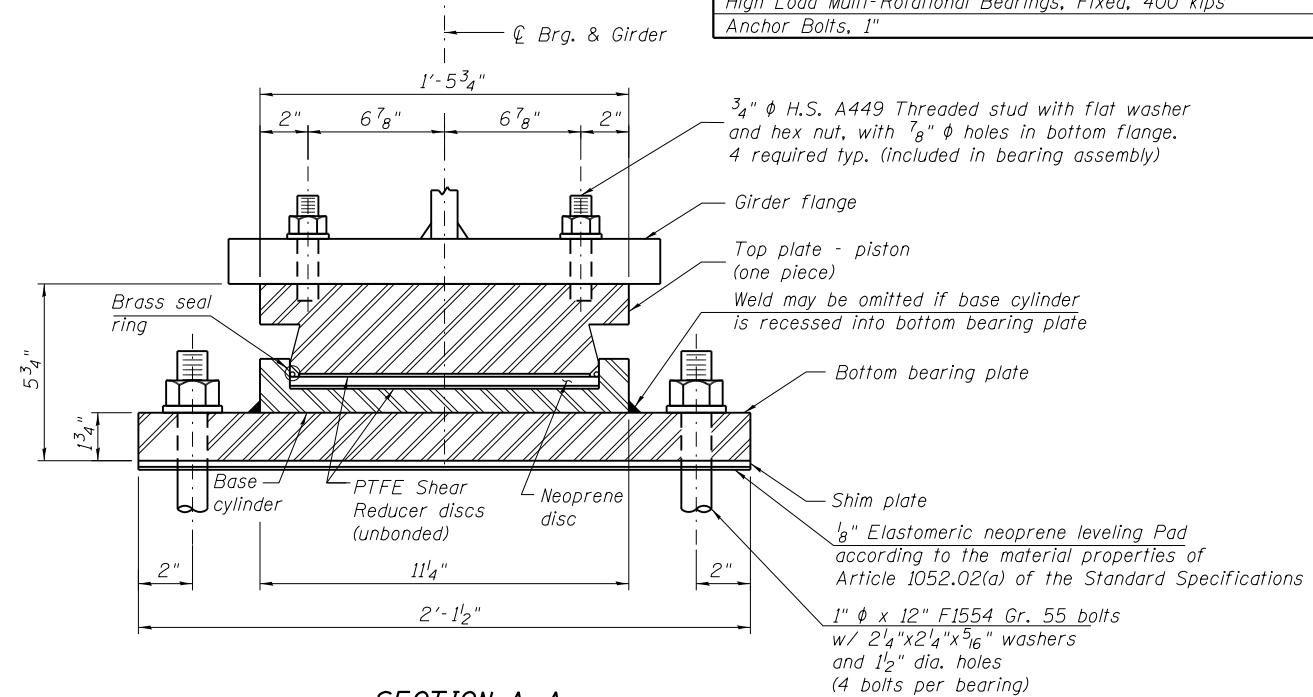


BILL OF MATERIAL

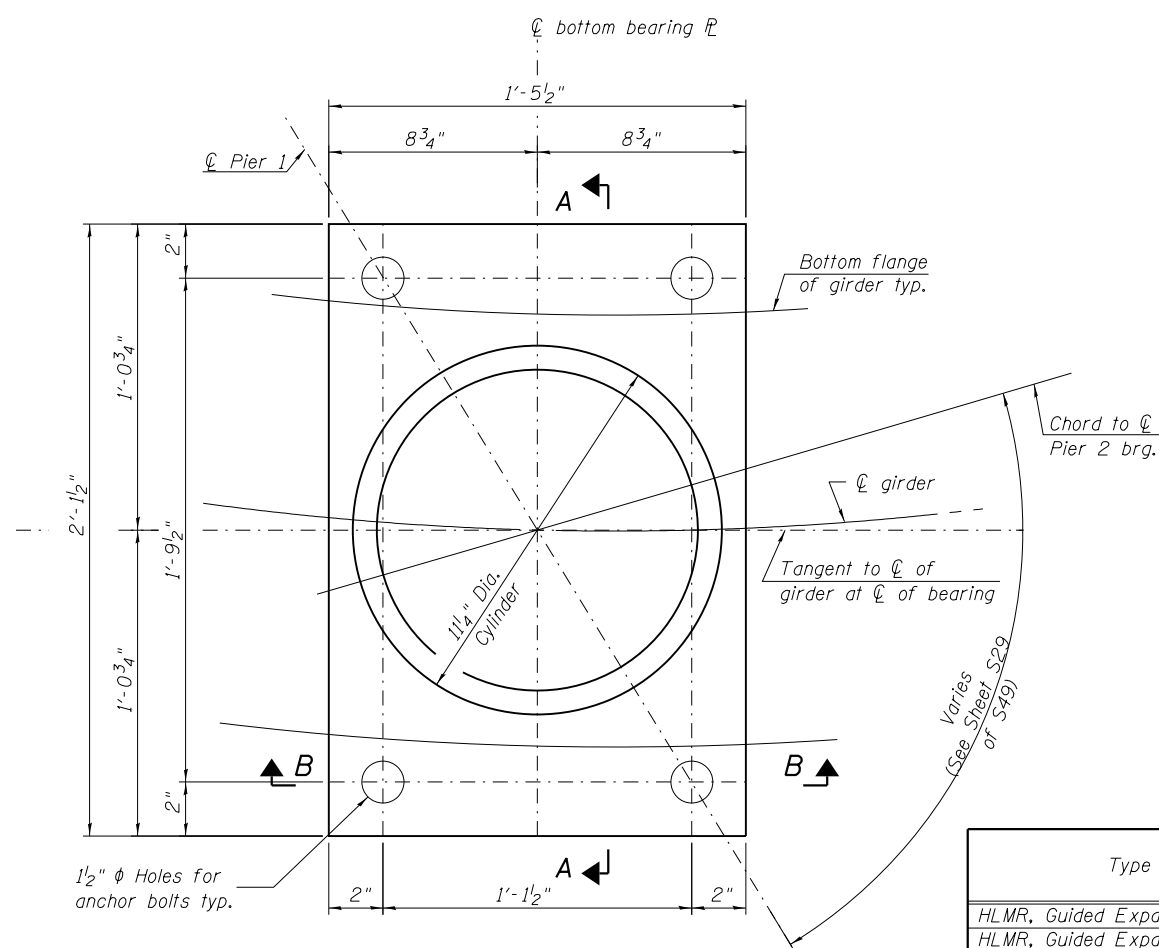
Item	Unit	Total
High Load Multi-Rotational Bearings, Fixed, 400 kips	Each	7
Anchor Bolts, 1"	Each	28



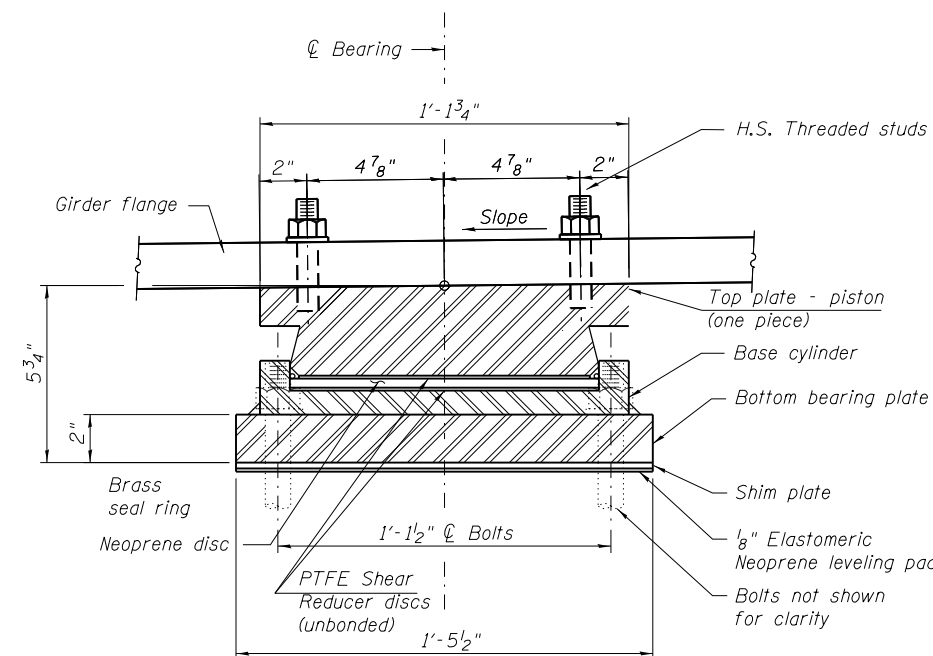
TOP BEARING PLATE AND PISTON PLAN



SECTION A-A



BOTTOM BEARING PLATE AND BASE CYLINDER PLAN



**SECTION B-B
(Pier 1, Looking South)**

For Notes, See Sheet S30 of S49.

BEARING SCHEDULE

Type	Location	Vertical Design Load (kips)	Lateral Design Load (kips)	Maximum Factored Ultimate Design Rotation (radians)	Girders	Total Required Movement (in)	D	Lt	a	Wt	b	Lb	c	Wb	d	H	Tt	Tb
HLMR, Guided Expansion, 150K	W. Abut.	142	28	0.02	1-7	0.87	7 1/2"	1'-1 1/2"	2"	1'-3"	2"	1'-0"	2"	1'-11"	2"	5"	1 1/2"	1 3/4"
HLMR, Guided Expansion, 250K	E. Abut.	202	40	0.02	1-7	0.40	9 1/2"	1'-1 1/2"	2"	1'-3"	2"	1'-0"	2"	1'-11"	2"	5 1/2"	1 1/2"	2"
HLMR, Guided Expansion, 250K	Pier 2	226	45	0.02	1-7	0.62	9 1/2"	1'-1 1/2"	2"	1'-3"	2"	1'-0"	2"	1'-11"	2"	5 1/2"	1 1/2"	2"
HLMR, Fixed, 400K	Pier 1	339	68	0.02	1-7	0.00	-	-	-	-	-	-	-	-	-	-	-	-