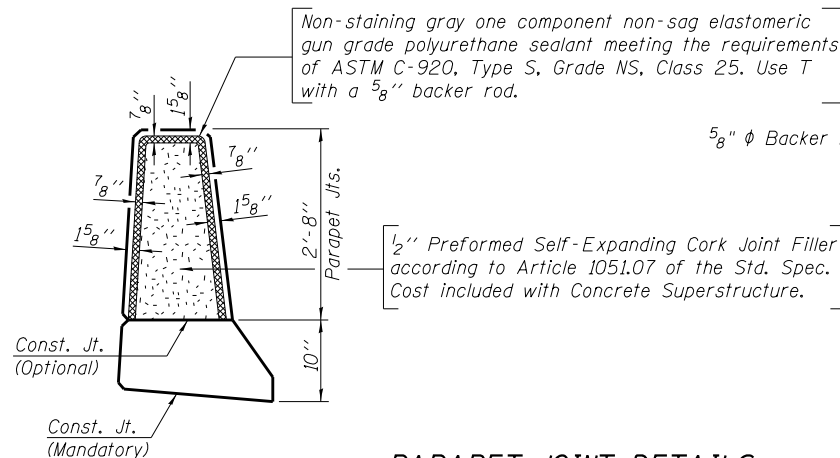
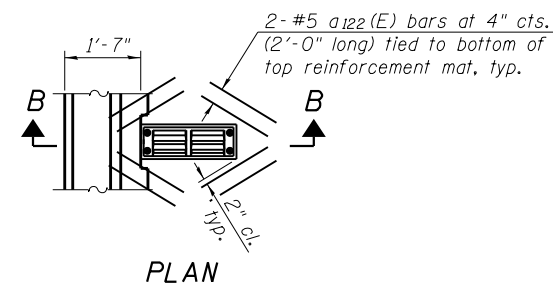


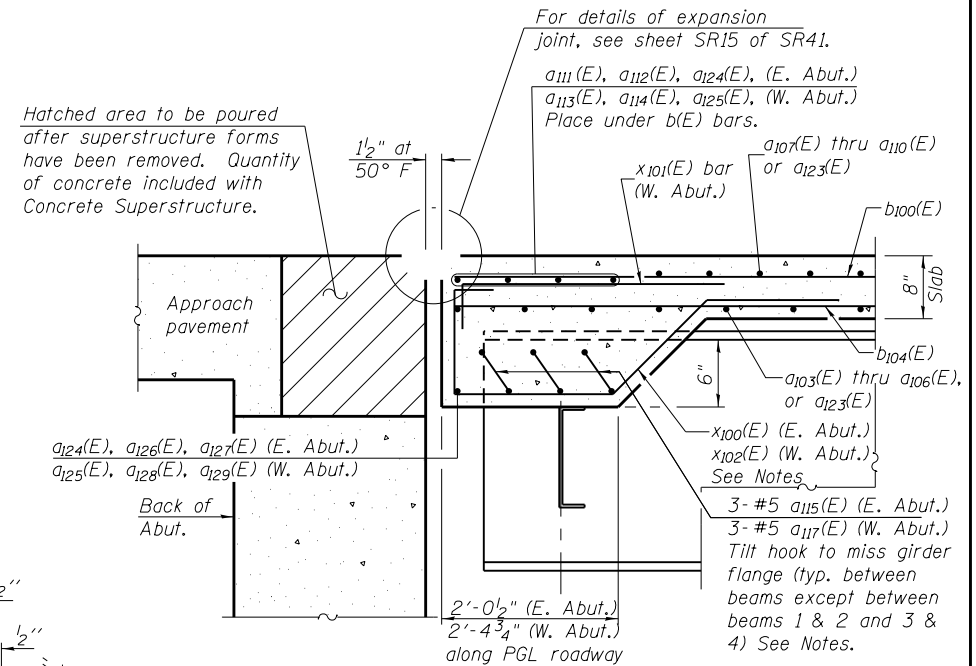
SECTION THRU PARAPET



PARAPET JOINT DETAILS

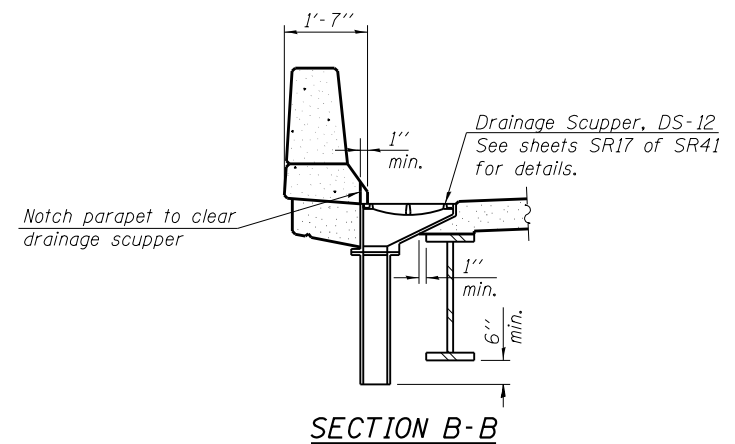


Note:
Cut longitudinal reinforcement to clear drainage scupper.



SECTION A-A

Notes:
For location of Section A-A see Sheet SR11 of SR41.
See sheet SR16 of SR41 for drainage details.
For Bottom rebar between beams 1 & 2 use:
3-#5 a116(E) at the East Abutment, 3-#5 a118(E) at the West Abutment.
For Bottom rebar between beams 3 & 4 use:
3-#6 a119(E) bars and 3-Bar Splicers (E) for #6 a119(E) bars (Stage I) to 3-#6 a124(E) bars and 3-Mechanical Splicers (E) for #6 a124(E) bars (Closure Pour) to 3-#6 a120(E) (Stage III) at the East Abutment,
3-#5 a121(E) and 3-Bar Splicers (E) for #5 a121(E) bars (Stage I) to 3-#5 a125(E) bars and 3-Mechanical Splicers (E) (Closure Pour) for #5 a125(E) bars to 3-#5 a120(E) (Stage III) at the West Abutment. Tilt hooks to miss girder flange.
5-#5 x100(E) or x102(E) bars, typ. between beams except 6 bars between Beams 1 & 2 and 6 bars between Beams 3 & 4 (2 Stage I, 2 Stage III, 2 Closure Pour).



SECTION B-B

USER NAME =	DESIGNED - AMS	REVISED
	CHECKED - LDB	REVISED
PLOT SCALE =	DRAWN - DR	REVISED
PLOT DATE =	CHECKED - JMH	REVISED

F.A.P. RTE.	SECTION	COUNTY	TOTAL SHEETS	SHEET NO.
0383	0303-474HB-R	COOK	368	254
CONTRACT NO. 60F63				
ILLINOIS FED. AID PROJECT				