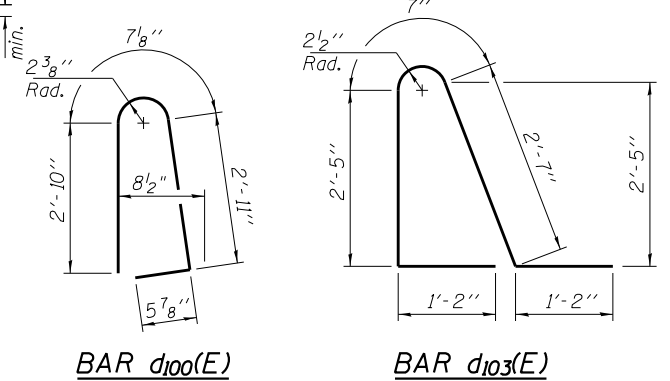
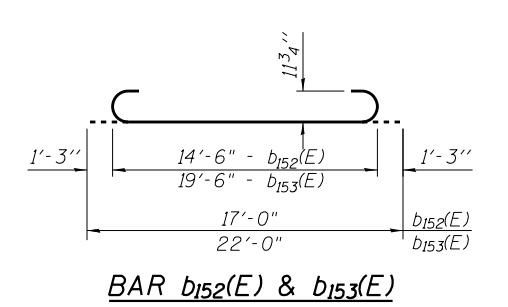
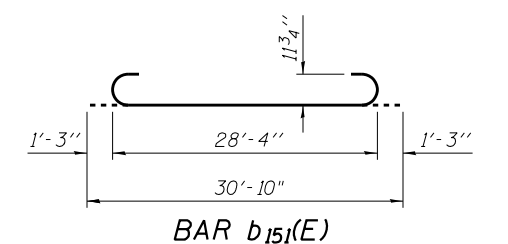
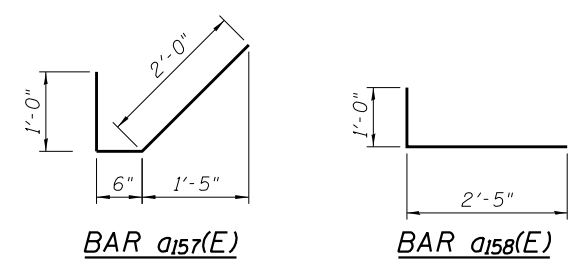


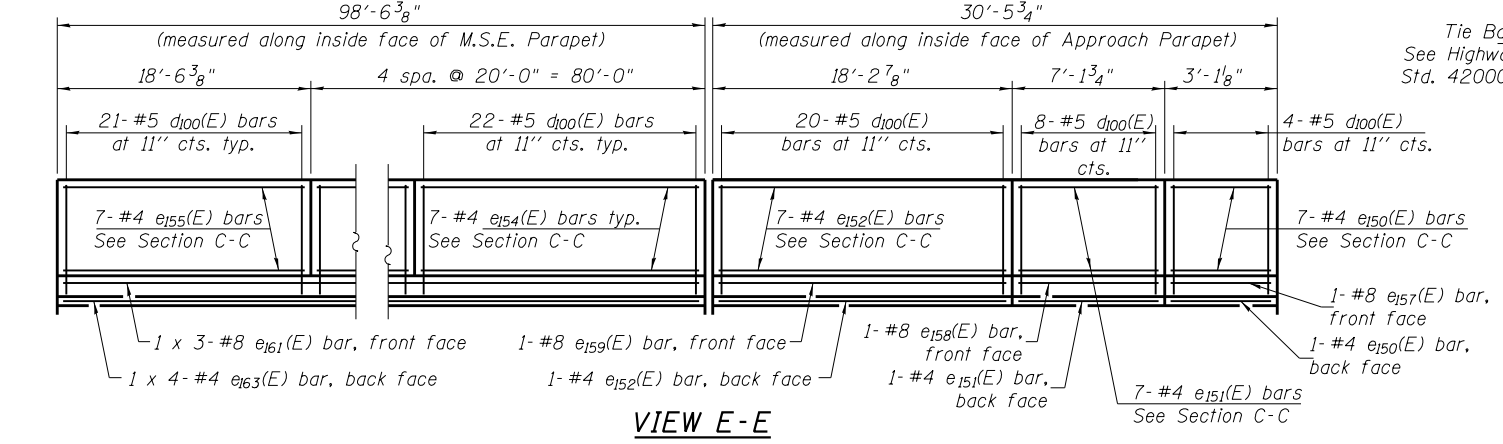
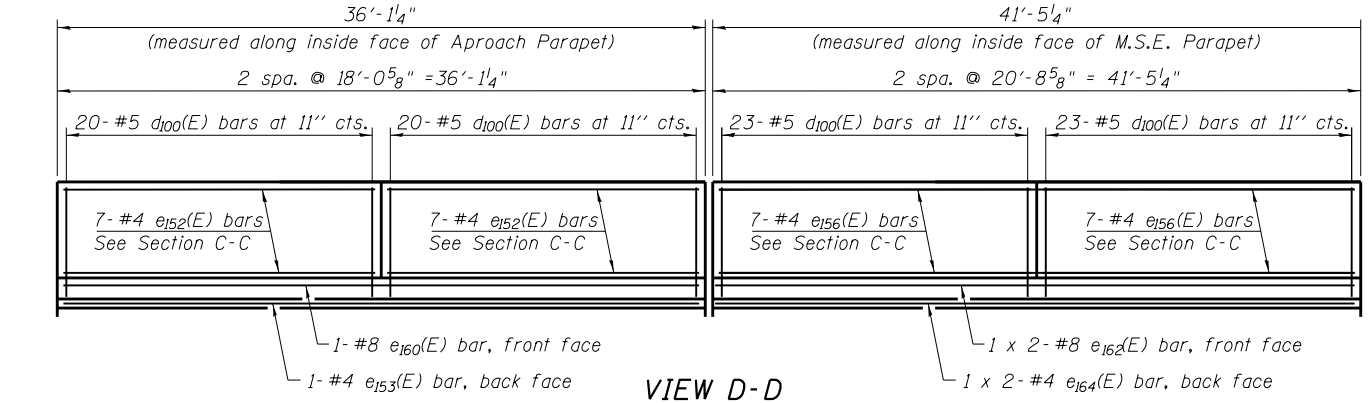
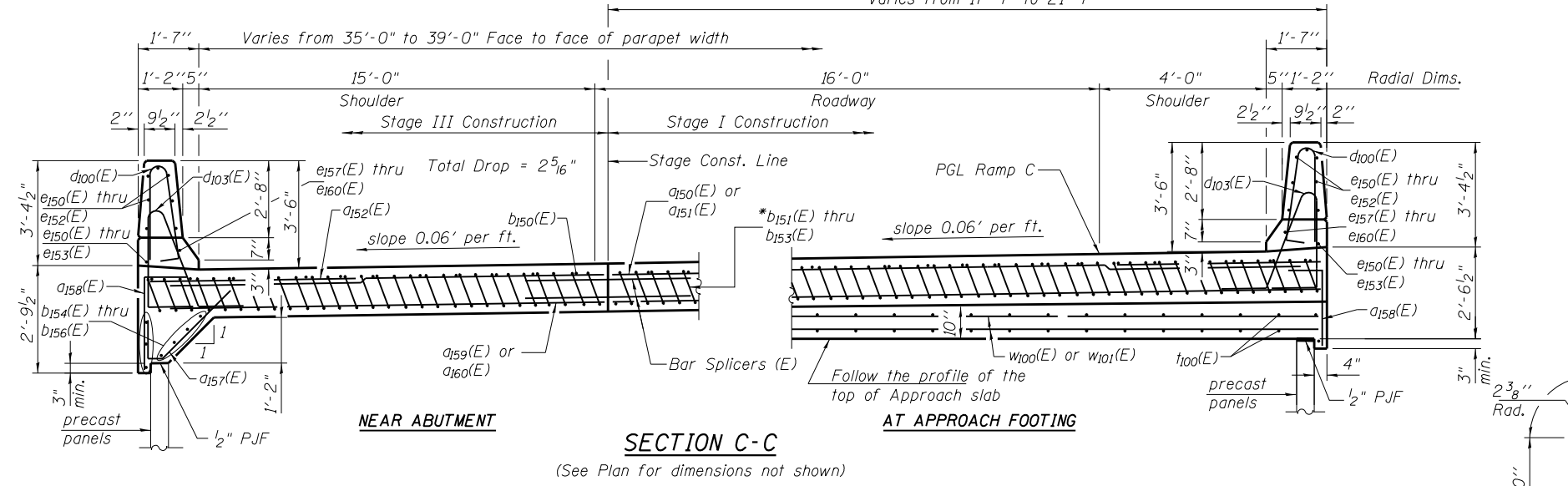
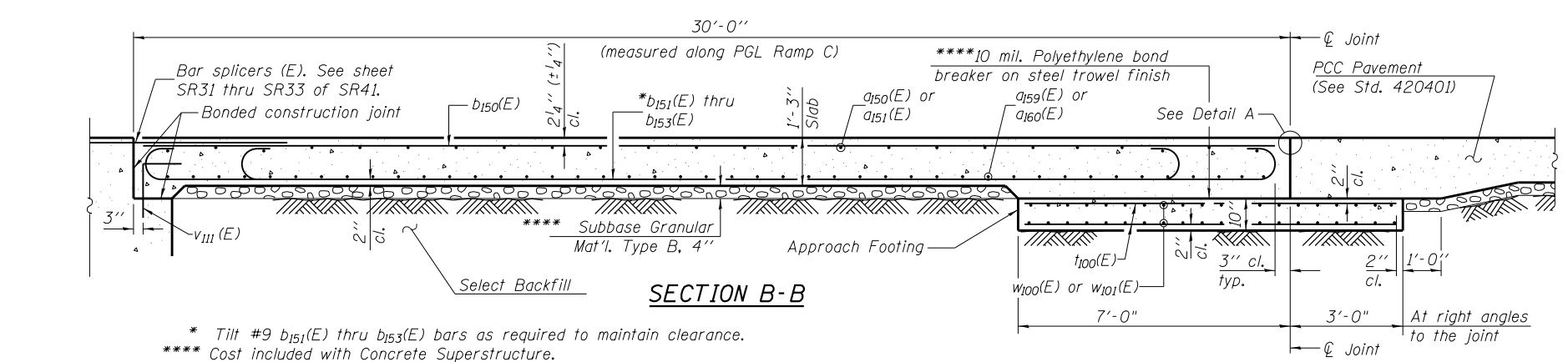
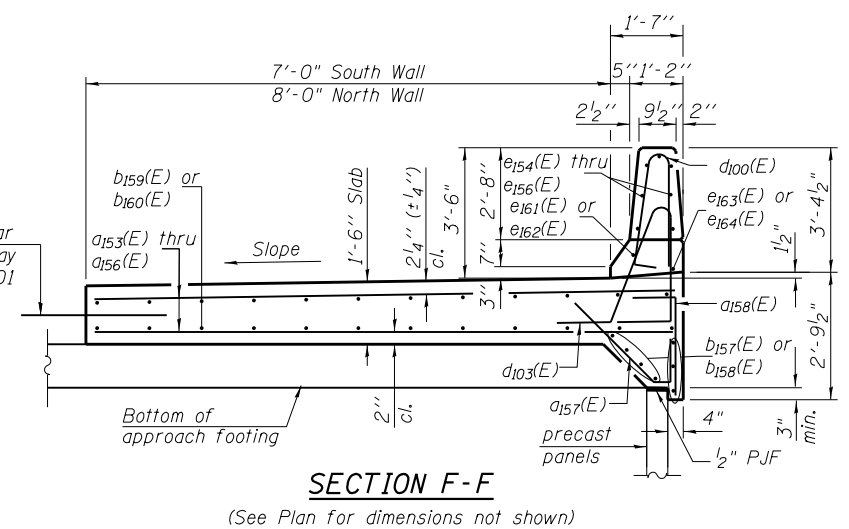
**WEST APPROACH  
BILL OF MATERIAL**

Bar	No.	Size	Length	Shape
a150(E)	25	#4	32'-8"	
a151(E)	25	#4	34'-5"	
a152(E)	48	#6	6'-6"	
a153(E)	89	#6	9'-3"	
a154(E)	12	#6	10'-5"	
a155(E)	40	#6	8'-3"	
a156(E)	14	#6	9'-5"	
a157(E)	256	#4	3'-6"	✓
a158(E)	303	#4	3'-5"	✓
a159(E)	46	#5	32'-8"	
a160(E)	46	#5	34'-5"	
b150(E)	38	#4	30'-9"	
b151(E)	92	#9	30'-10"	
b152(E)	14	#9	17'-0"	
b153(E)	7	#9	22'-0"	
b154(E)	7	#4	7'-10"	
b155(E)	7	#4	17'-0"	
b156(E)	14	#4	19'-10"	
b157(E)	28	#4	27'-2"	
b158(E)	14	#4	22'-1"	
b159(E)	88	#5	27'-8"	
b160(E)	40	#5	22'-5"	
d100(E)	227	#5	6'-10"	
d103(E)	227	#5	7'-11"	
e150(E)	8	#4	2'-10"	
e151(E)	8	#4	6'-10"	
e152(E)	22	#4	17'-11"	
e153(E)	1	#4	35'-10"	
e154(E)	28	#4	19'-9"	
e155(E)	7	#4	18'-3"	
e156(E)	14	#4	20'-5"	
e157(E)	1	#8	2'-10"	
e158(E)	1	#8	6'-10"	
e159(E)	1	#8	17'-11"	
e160(E)	1	#8	35'-10"	
e161(E)	3	#8	36'-4"	
e162(E)	2	#8	23'-4"	
e163(E)	4	#4	26'-2"	
e164(E)	2	#4	21'-9"	
t100(E)	92	#4	14'-3"	
w100(E)	40	#5	31'-7"	
w101(E)	40	#5	35'-2"	
Concrete Superstructure		Cu. Yd.	170.4	
Concrete Structures		Cu. Yd.	20.9	
Bridge Deck Grooving		Sq. Yd.	127	
Protective Coat		Sq. Yd.	648	
Reinforcement Bars, Epoxy Coated		Pound	33,320	

\*\*\*\*\* Bend Reinforcement to fit in Field.  
 Notes:  
 Approach slab and parapet concrete shall be paid for as Concrete Superstructure.  
 Approach footing concrete shall be paid for as Concrete Structures.  
 Reinforcement shall be paid for as Reinforcement Bars, Epoxy Coated.  
 Cost of excavation for approach footing included with Concrete Structures.  
 Protective Coat shall be applied to the to the approach slab, the anchorage slabs, and the inside and top faces of the parapets.  
 The approach footing maximum applied service bearing pressure (Qmax) = 2.0 ksf.  
 For parapet joint details, see sheet SR13 of SR41.  
 For v<sub>III</sub>(E) bar details, see sheets SR31 thru SR33 of SR41.  
 For Select Backfill, see sheet SR32 of SR41.  
 See sheet SR36 of SR41 for Detail A.  
 For Bar Splicer details, see sheet SR38 of SR41.



**MINIMUM BAR LAP**  
 (Parapet)  
 #4 bar = 2'-0"  
 #8 bar = 5'-2"



**COLLINS ENGINEERS**  
 133 N. Rocker Dr.  
 Suite 900  
 Chicago, IL 60646  
 Phone: (312) 704-3300  
 Fax: (312) 704-9320  
 www.collinsengr.com  
 ILLINOIS PROFESSIONAL DESIGN FIRM LICENSE NO. 184-000993

USER NAME =	DESIGNED - AMS	REVISED
PLOT SCALE =	CHECKED - LDB	REVISED
PLOT DATE	DRAWN - DR	REVISED
	CHECKED - JMH	REVISED

**STATE OF ILLINOIS  
DEPARTMENT OF TRANSPORTATION**

**WEST BRIDGE APPROACH SLAB DETAILS  
STRUCTURE NO. 016-1323**

F.A.P. RTE.	SECTION	COUNTY	TOTAL SHEETS	SHEET NO.
0383	0303-474HB-R	COOK	368	278
CONTRACT NO. 60F63			ILLINOIS FED. AID PROJECT	