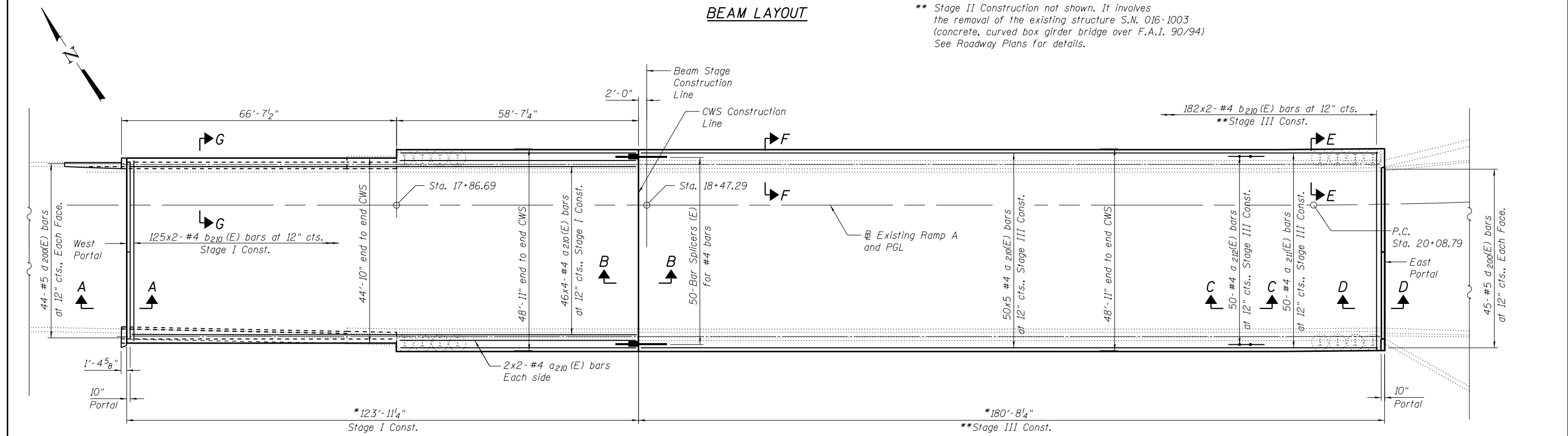


BEAM LAYOUT

* Dimensions may vary depending on beam tolerances, maximum dimensions shown
 ** Stage II Construction not shown. It involves the removal of the existing structure S.N. 016-1003 (concrete, curved box girder bridge over F.A.I. 90/94) See Roadway Plans for details.



CONCRETE WEARING SURFACE PLAN

MINIMUM BAR LAP
 #4 bar = 2'-7"

Notes:
 See sheet ST10 for Section A-A, B-B, C-C and D-D.
 See sheet ST12 for Bill of Material.
 See sheet ST12 for section E-E, F-F and G-G.