

1. Place form brace system on completed reinforcement level; back from the finished fabric face a distance of $\frac{1}{3}$ to $\frac{1}{2}$ the geotextile reinforcement spacing.

2. Position fabric so that the required geotextile re-embedment length extends over the top of the form brace and the design reinforcement width is placed with no slack against the previous level.

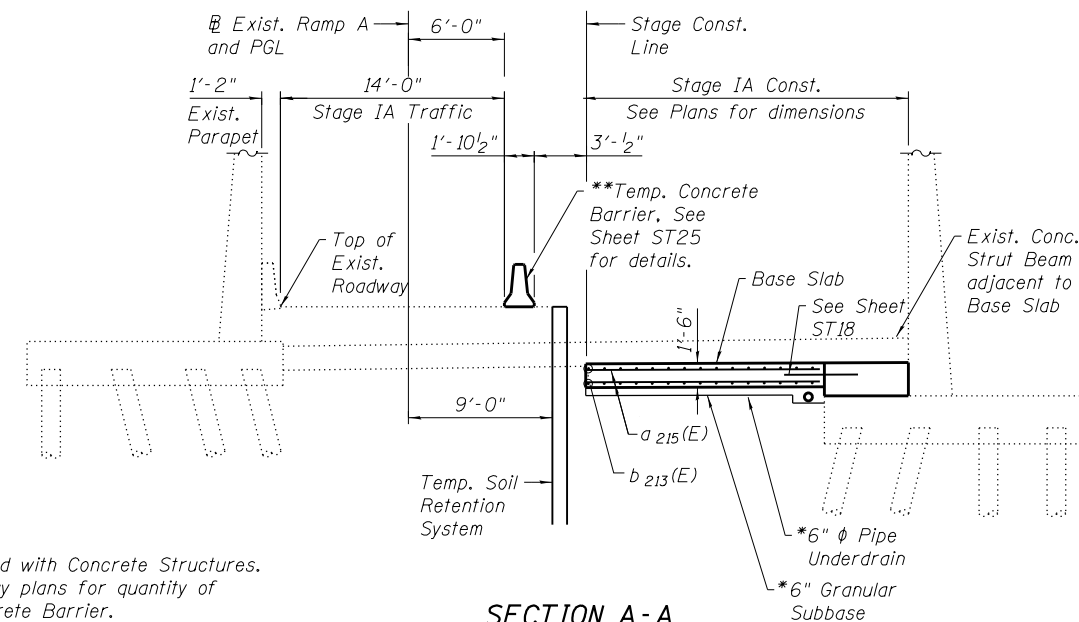
3. Compact select fill material in lifts to final lift height, create ($\pm 3''$) depression in zone where re-embedment length will be located and place additional height of compacted select fill against form brace.

4. Fold geotextile re-embedment length back over form brace into zone where depression was made in select fill and place additional select fill ($\pm 3''$) to embed geotextile and bring to final lift height.

5. Pull form brace outward allowing geotextile face to slightly readjust to form tight round face level with plan reinforcement spacing.

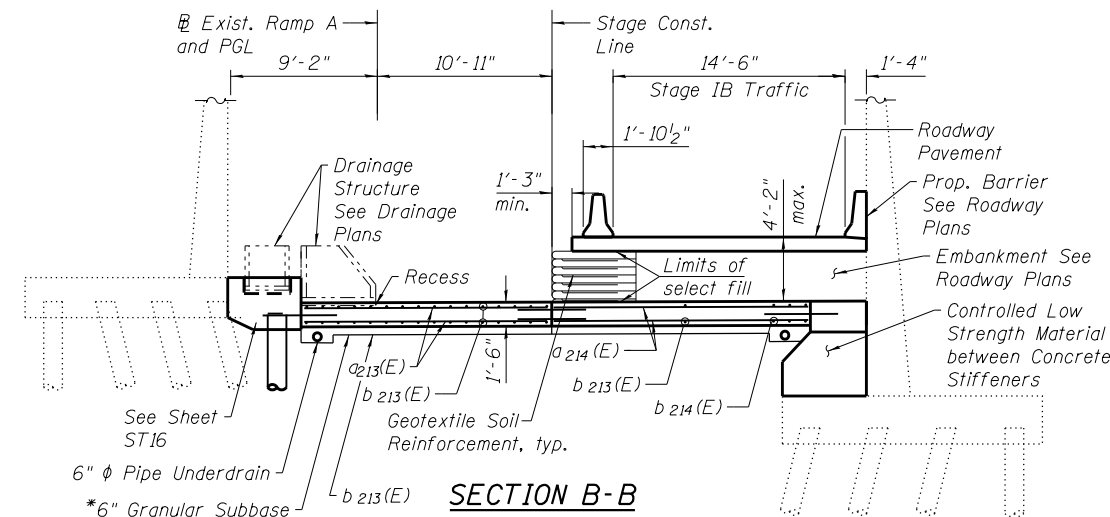
TEMPORARY GEOTEXTILE WALL CONSTRUCTION SEQUENCE

Notes:
The geotextile soil reinforcement shall have a minimum allowable tensile strength (T min.) of 200 lb./in. as determined by the procedure described in the Special Provision. The computations supporting the determination of (T min.) shall be submitted to the engineer for approval.
For Geotextile Retaining Wall location see Sheet ST21.

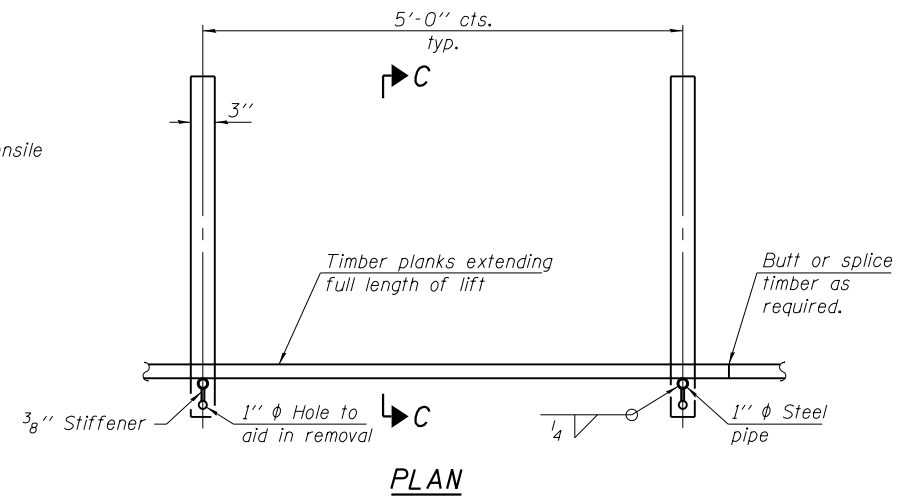


SECTION A-A
Showing Stage IA Construction
See Sheet ST21 for location.

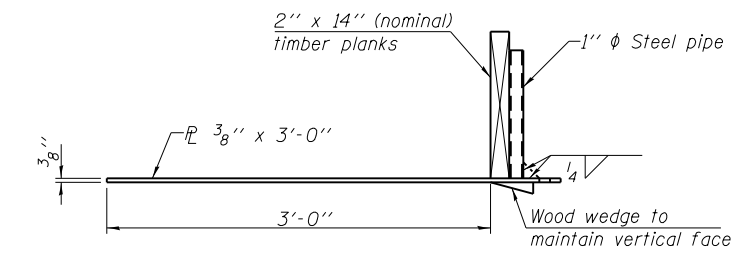
* Cost included with Concrete Structures.
** See Roadway plans for quantity of Temp. Concrete Barrier.



SECTION B-B
Showing Stage IB Construction
See Sheet ST21 for location.



PLAN



SECTION C-C

TEMPORARY GEOTEXTILE FORM BRACE DETAIL

Note:
This is a suggested detail, the Contractor is responsible for the design of the form brace system to be used.

USER NAME =	DESIGNED - EKM	REVISED
	CHECKED - LDB	REVISED
PLOT SCALE =	DRAWN - PRH	REVISED
PLOT DATE =	CHECKED - EKM	REVISED

F.A.I. RTE. 90/94	SECTION 0303-474HB-R	COUNTY COOK	TOTAL SHEETS 368	SHEET NO. 304
CONTRACT NO. 60F63				ILLINOIS FED. AID PROJECT