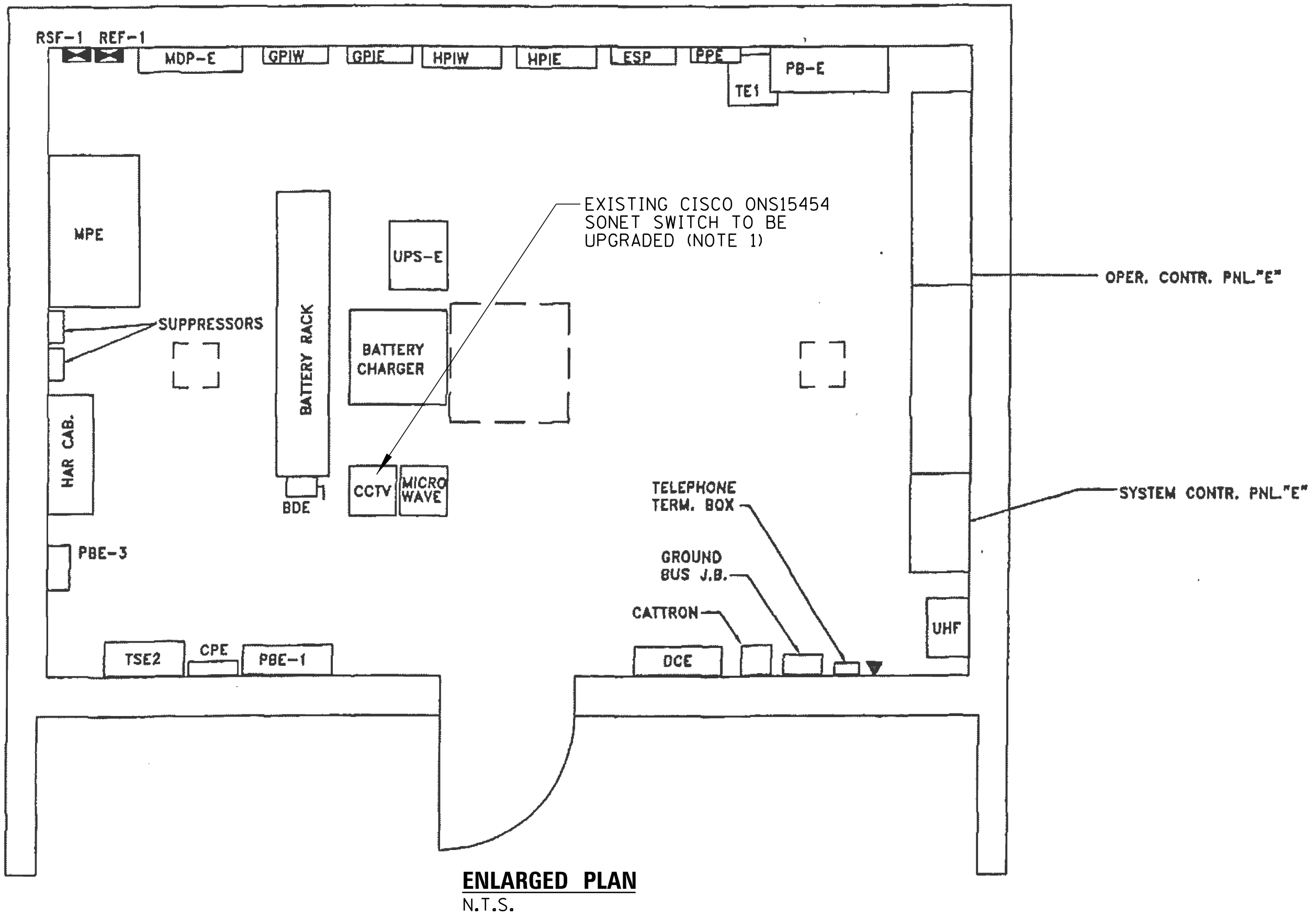
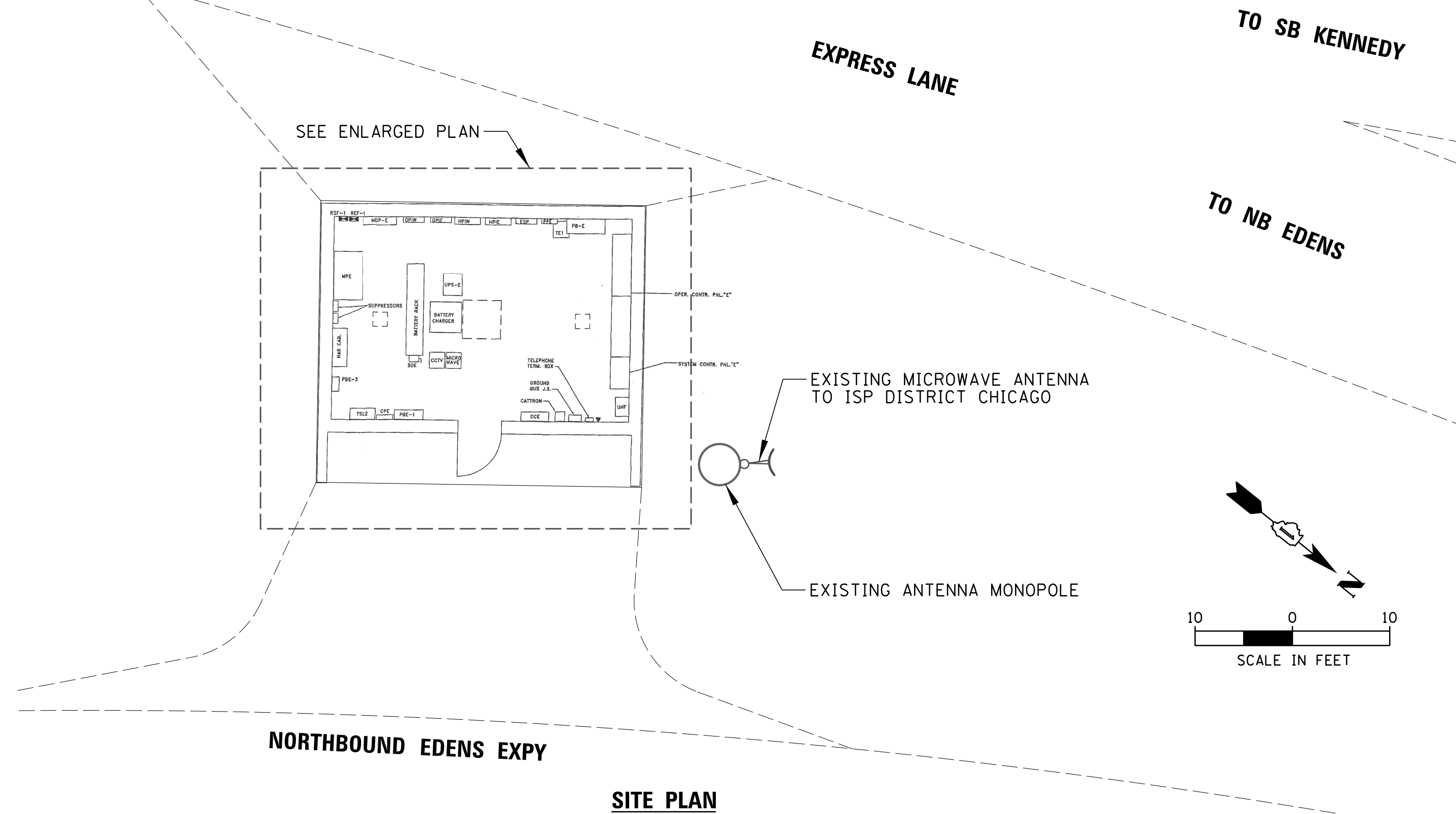
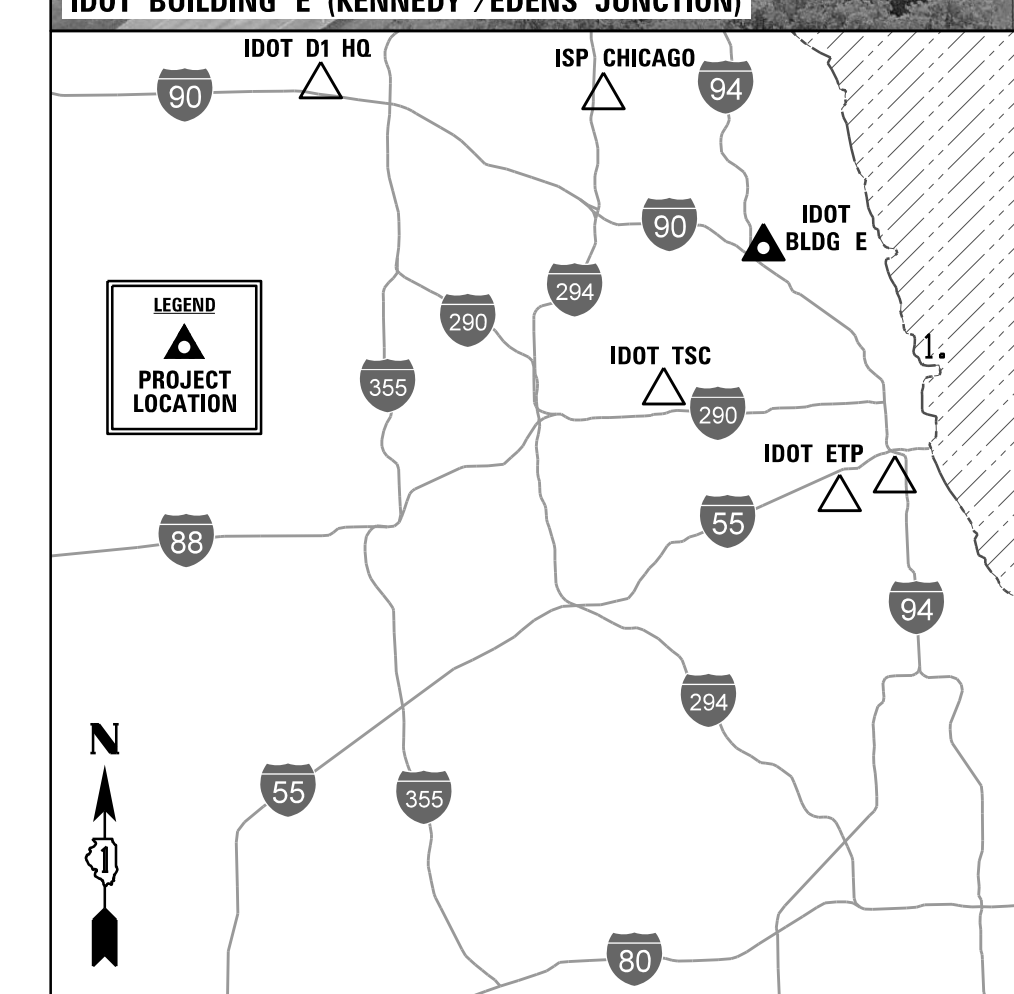


SCOPE OF WORK

1. AT IDOT BUILDING E, THE CONTRACTOR SHALL COORDINATE, FURNISH, AND INSTALL ALL REQUIRED EQUIPMENT TO COMPLETE THE EXISTING SONET NODE. THE SONET NODE SHALL BE UPGRADED TO AUTOMATIC PATH SWITCHOVER FROM MICROWAVE (PRIMARY MODE) TO FIBER AND VICE VERSA WHEN ACTIVE PATH EXPERIENCES AN OUTAGE. SEE SPECIAL PROVISION FOR DETAILS.



IDOT BUILDING E (KENNEDY / EDENS)



CHRISTOPHER B. BURKE ENGINEERING, LTD.
 9575 W. Higgins Road, Suite 600
 Rosemont, Illinois 60018
 (847) 823-0500

FILE NAME =	USER NAME =	DESIGNED	REVISED
N:\Idot\090122\Mech\090122.07.IDOTBE.PLN	odericco	AJD	-
		DRAWN	REVISED
		KWB	-
		CHECKED	REVISED
		JPC	-
		DATE	REVISED
		3/21/2013	-

STATE OF ILLINOIS
 DEPARTMENT OF TRANSPORTATION

ITS CENTER-TO-CENTER INTEGRATION PROJECT
 IDOT BUILDING E (KENNEDY / EDENS)

F.A. RTE.	SECTION	COUNTY	TOTAL SHEETS	SHEET NO.
	2009-0871	COOK	20	7
CONTRACT NO. 60134				
ILLINOIS FED. AID PROJECT				

SCALE: AS SHOWN SHEET NO. OF SHEETS STA. TO STA.