

F.A.P. RTE.	SECTION	COUNTY	TOTAL SHEETS	SHEET NO.
303	134-N-1	LAKE	62	1
FED. ROAD DIST. NO. 1	ILLINOIS	CONTRACT NO. 60L28	D-91-664-10 #62+3=65	

**STATE OF ILLINOIS**  
**DEPARTMENT OF TRANSPORTATION**  
**DIVISION OF HIGHWAYS**  
**PROPOSED**  
**HIGHWAY PLANS**  
**F.A.P. 303: IL ROUTE 173**  
**SECTION: 134-N-1**  
**AT TIFFANY ROAD**  
**PROJECT NO.: HSIP-0303(055)**  
**INTERSECTION RECONSTRUCTION**  
**LAKE COUNTY**  
**C-91-664-10**

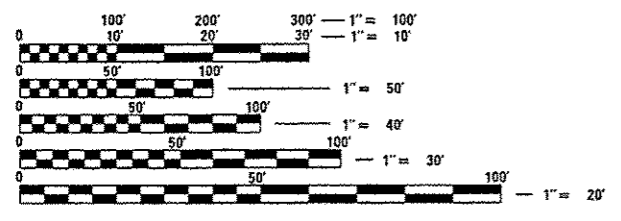
FOR INDEX OF SHEETS, SEE SHEET NO. 2

IMPROVEMENT LOCATED WITHIN THE VILLAGE OF ANTIOCH

**TRAFFIC DATA**  
**IL ROUTE 173**  
**2009 ADT=14,100**  
**POSTED SPEED LIMIT=40 MPH**  
**DESIGN SPEED LIMIT=45 MPH**  
**TIFFANY ROAD**  
**2009 ADT=7,200**  
**POSTED SPEED LIMIT=35 MPH**  
**DESIGN SPEED LIMIT=35 MPH**

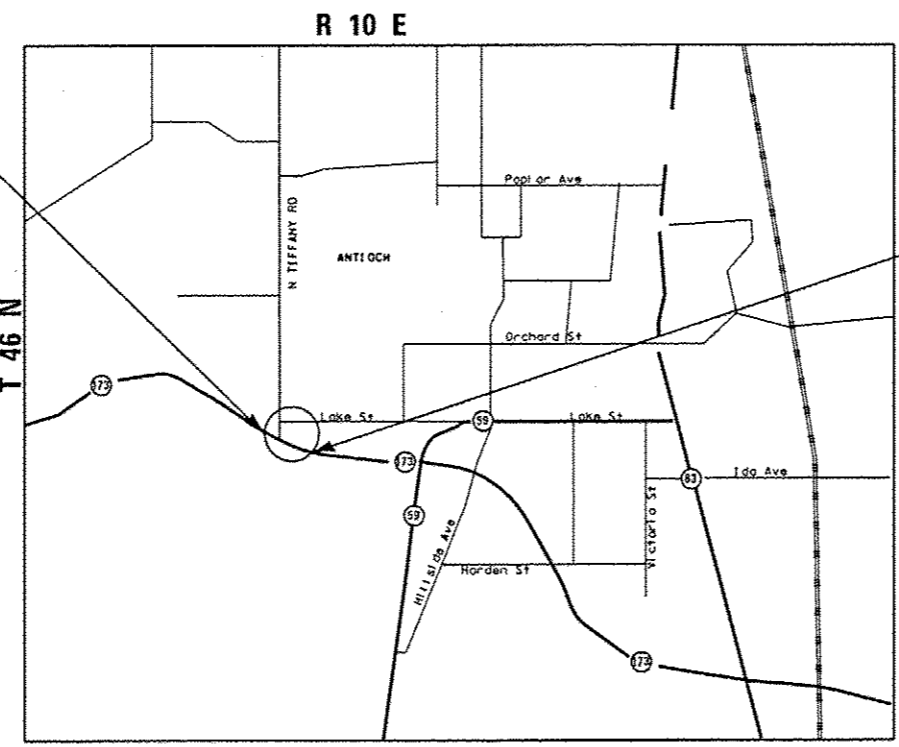
BEGIN PROJECT  
 IL ROUTE 173  
 STA. 999 + 08

END PROJECT  
 IL ROUTE 173  
 STA. 1009 + 09



FULL SIZE PLANS HAVE BEEN PREPARED USING STANDARD ENGINEERING SCALES. REDUCED SIZED PLANS WILL NOT CONFORM TO STANDARD SCALES. IN MAKING MEASUREMENTS ON REDUCED PLANS, THE ABOVE SCALES MAY BE USED.

J.U.L.I.E.  
 JOINT UTILITY LOCATION INFORMATION FOR EXCAVATION  
 1-800-892-0123  
 OR 811



**LOCATION MAP**  
 SCALE: NTS

**ANTIOCH TOWNSHIP**  
**GROSS LENGTH OF PROJECT = 1001 FT = 0.19 MILE**  
**NET LENGTH OF PROJECT = 1001 FT = 0.19 MILE**



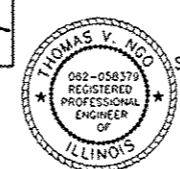
LOCATION OF SECTION INDICATED THUS: —■—

STATE OF ILLINOIS  
 DEPARTMENT OF TRANSPORTATION  
 DIVISION OF HIGHWAYS

SUBMITTED February 1, 2013  
*John D. Baranzelli*  
 DEPUTY DIRECTOR OF HIGHWAYS, REGION ENGINEER

March 22, 2013  
*John D. Baranzelli* P.E.  
 acting ENGINEER OF DESIGN AND ENVIRONMENT

March 22, 2013  
*Omer Osman* P.E.  
 DIRECTOR OF HIGHWAYS, CHIEF ENGINEER



Signed *Thomas V. Ngo*  
 Thomas V. Ngo, P.E. II Lic. No. 062-058379  
 Expires 11-30-2013  
 Date 2/1/2013  
 For Roadway Drawings



Signed *Jillyn K. O'Shea*  
 Jillyn K. O'Shea, P.E. II Lic. No. 062-054974  
 Expires 11-30-2013  
 Date Feb. 1, 2013  
 For Drainage Drawings

200 22ND Street, Suite 216, Lombard, IL 60148  
 630.706.0110 voice, 630.839.2566 fax  
 www.mps-il.com

**MILLENNIA PROFESSIONAL SERVICES**

PROJECT MANAGER: ROBERT BORO (847) 705-4237  
 PROJECT ENGINEER: MICHELLE AQUINO (847) 705-4241

CONTRACT NO. 60L28

**PRINTED BY THE AUTHORITY OF THE STATE OF ILLINOIS**