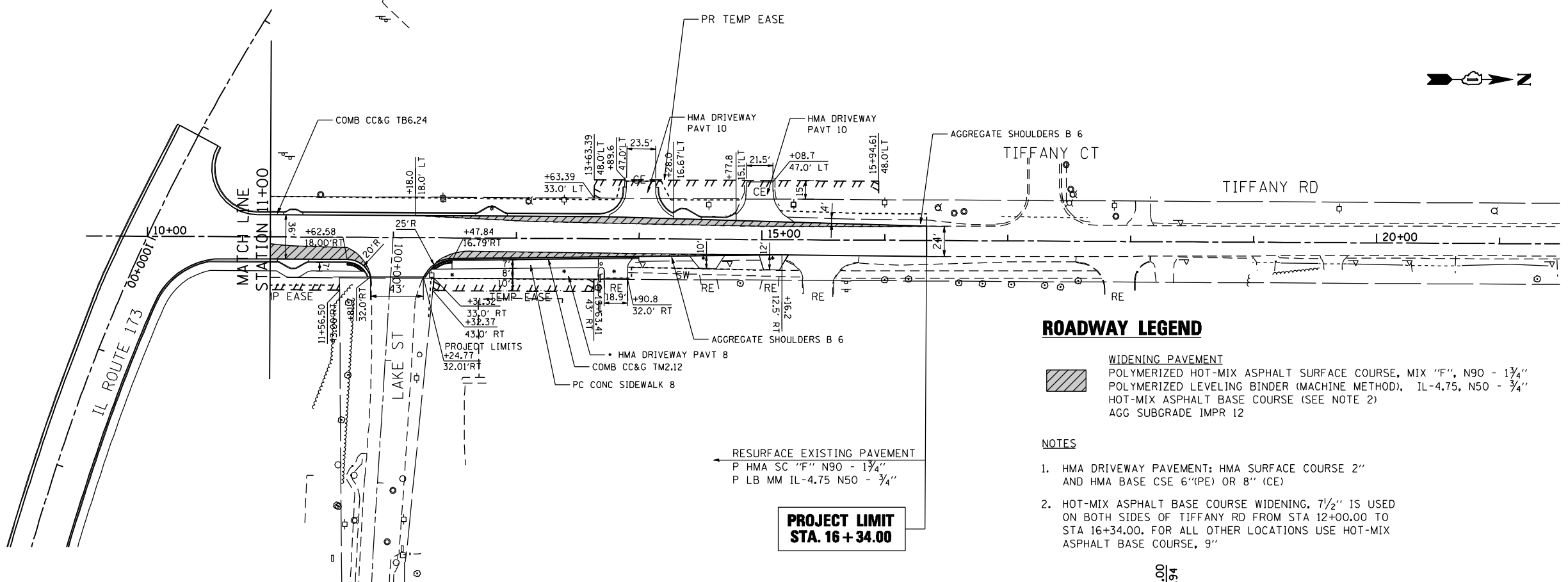


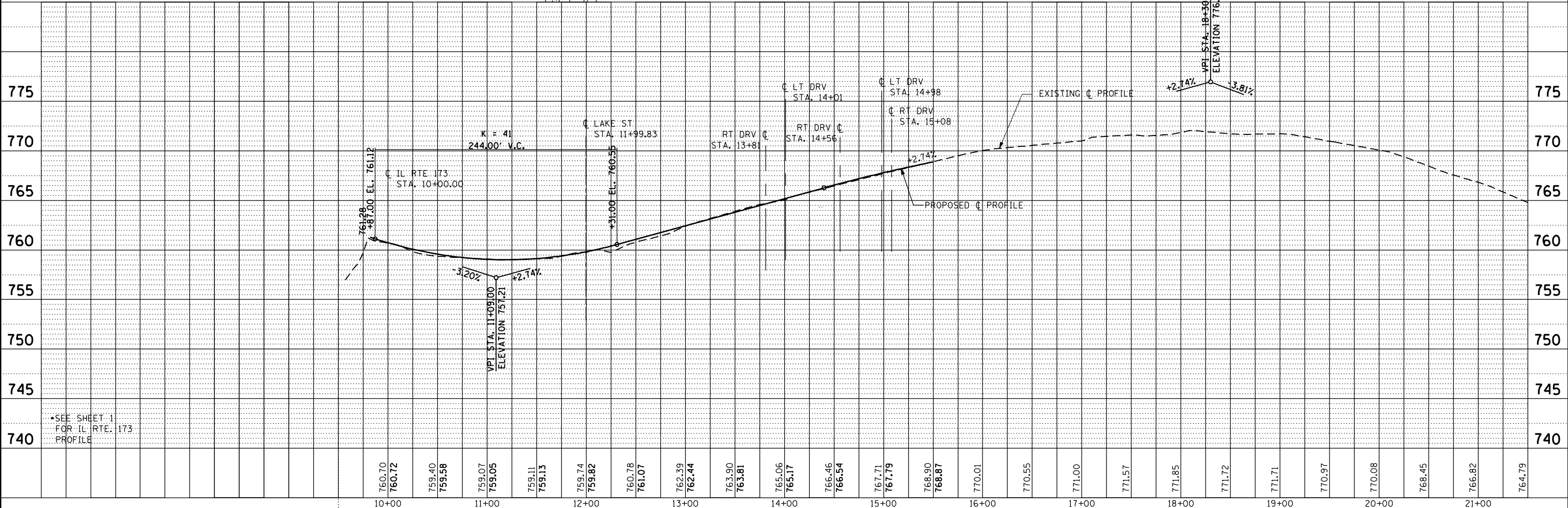
PLAN	SURVEYED	DATE
	PLOTTED	BY
	GRADES CHECKED	
	NOTE BOOK NO.	
	CADD FILE NAME	

PROFILE	SURVEYED	DATE
	PLOTTED	BY
	GRADES CHECKED	
	NOTE BOOK NO.	
	CADD FILE NAME	

FILE NAME = P:\2011\ME11007\_Ver-Var-Plan\CADD\W003\_IL173.ctb  
 PLOT SCALE = 1/8"=1'-0"  
 USER NAME = Millennium Professional Services



- ROADWAY LEGEND**
- WIDENING PAVEMENT
  - POLYMERIZED HOT-MIX ASPHALT SURFACE COURSE, MIX "F", N90 - 1 3/4"
  - POLYMERIZED LEVELING BINDER (MACHINE METHOD), IL-4.75, N50 - 3/4"
  - HOT-MIX ASPHALT BASE COURSE (SEE NOTE 2)
  - AGG SUBGRADE IMPR 12
- NOTES**
1. HMA DRIVEWAY PAVEMENT: HMA SURFACE COURSE 2" AND HMA BASE CSE 6"(PE) OR 8" (CE)
  2. HOT-MIX ASPHALT BASE COURSE WIDENING, 7 1/2" IS USED ON BOTH SIDES OF TIFFANY RD FROM STA 12+00.00 TO STA 16+34.00. FOR ALL OTHER LOCATIONS USE HOT-MIX ASPHALT BASE COURSE, 9"



DESIGNED	CJD	REVISED	-
DRAWN	CJD	REVISED	-
CHECKED	TVN	REVISED	-
DATE	2/4/2013	REVISED	-

10+00	760.70	760.72	759.40	759.58	759.07	759.05	759.11	759.13	759.74	759.82	760.78	761.07	762.39	762.44	763.90	763.81	765.06	765.17	766.46	766.54	767.71	767.79	768.90	768.87	770.01	770.55	771.00	771.57	771.85	771.72	771.71	770.97	770.08	768.45	766.82	764.79
-------	--------	--------	--------	--------	--------	--------	--------	--------	--------	--------	--------	--------	--------	--------	--------	--------	--------	--------	--------	--------	--------	--------	--------	--------	--------	--------	--------	--------	--------	--------	--------	--------	--------	--------	--------	--------

**STATE OF ILLINOIS  
DEPARTMENT OF TRANSPORTATION**

**IL ROUTE 173  
AT TIFFANY ROAD**

**PLAN & PROFILE  
TIFFANY ROAD**

SCALE: 1"=50'    SHEET NO. 1 OF 1 SHEETS    STA. 10+00.00 TO STA. 16+34.00

F.A.P. RTE.	SECTION	COUNTY	TOTAL SHEETS	SHEET NO.
303	134-N-1	LAKE	62	16
CONTRACT NO. 60L28				



**MILLENNIA PROFESSIONAL SERVICES**  
 200 22ND Street, Suite 216, Lombard, IL 60148  
 630.785.8110 voice, 630.839.2566 fax  
 WWW.MPS-IL.COM