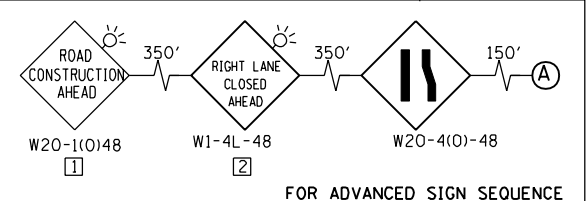
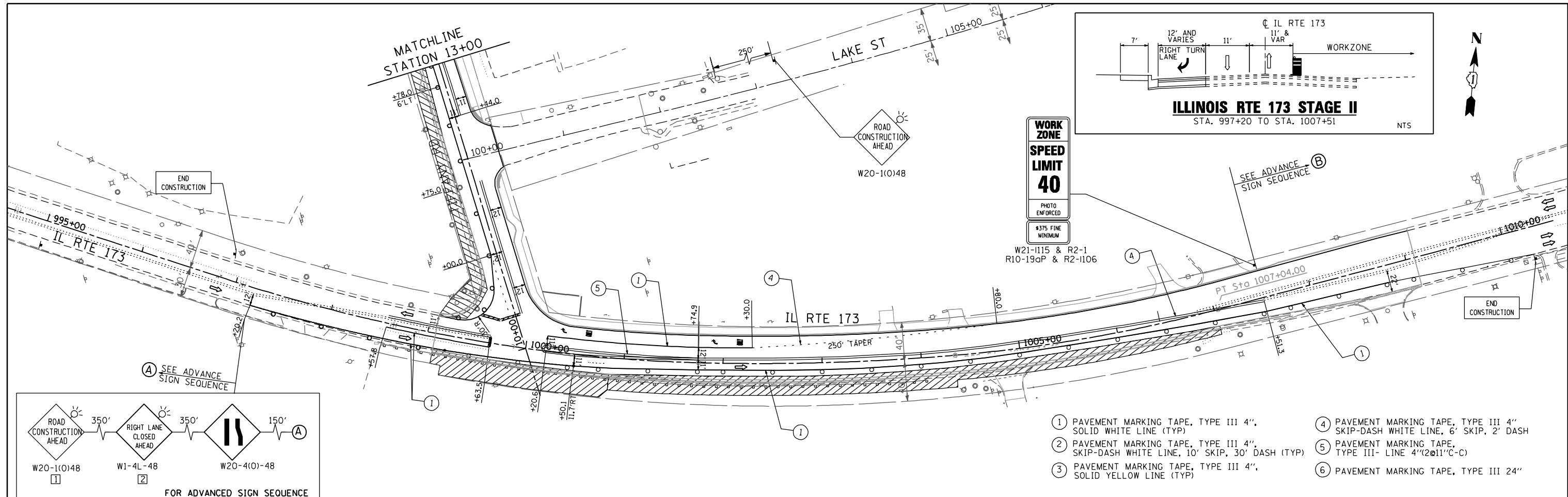
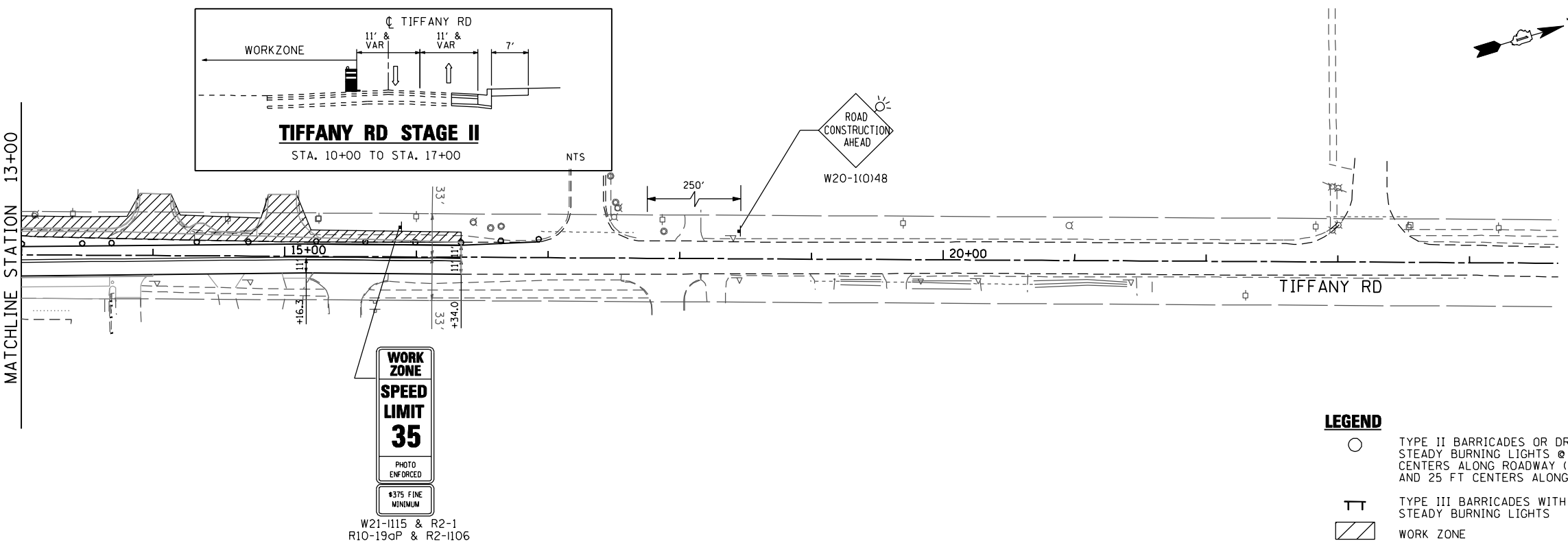


FILE NAME : P:\2011\ME11007\_Var\Var-Ph1\CA000\W003\_IL173.et.Tiff\_Rd\Shvs\DI60L28-shs-Stg21\_IL173.dgn  
 USER NAME : Millennium Professional Services



- ① PAVEMENT MARKING TAPE, TYPE III 4", SOLID WHITE LINE (TYP)
- ② PAVEMENT MARKING TAPE, TYPE III 4", SKIP-DASH WHITE LINE, 10' SKIP, 30' DASH (TYP)
- ③ PAVEMENT MARKING TAPE, TYPE III 4", SOLID YELLOW LINE (TYP)
- ④ PAVEMENT MARKING TAPE, TYPE III 4" SKIP-DASH WHITE LINE, 6' SKIP, 2' DASH
- ⑤ PAVEMENT MARKING TAPE, TYPE III- LINE 4"(2@11"C-C)
- ⑥ PAVEMENT MARKING TAPE, TYPE III 24"



- LEGEND**
- TYPE II BARRICADES OR DRUMS WITH STEADY BURNING LIGHTS @ 50 FT CENTERS ALONG ROADWAY (TANGENT) AND 25 FT CENTERS ALONG TAPERS.
  - TT TYPE III BARRICADES WITH STEADY BURNING LIGHTS
  - ▨ WORK ZONE
  - ➡ ARROW BOARD
  - † SIGN

**MILLENNIA PROFESSIONAL SERVICES**  
 200 22ND Street, Suite 216, Lombard, IL 60148  
 630.705.0110 voice, 630.839.3566 fax  
 www.mps-il.com

DESIGNED -	CJD	REVISED -	
DRAWN -	CJD	REVISED -	
CHECKED -	TVN	REVISED -	
DATE -	2/6/2013	REVISED -	

**STATE OF ILLINOIS**  
**DEPARTMENT OF TRANSPORTATION**

**IL ROUTE 173**  
**AT TIFFANY ROAD**

**SUGGESTED STAGES CONSTRUCTION & TRAFFIC CONTROL PLAN**  
**STAGE II**

F.A.P. RTE.	SECTION	COUNTY	TOTAL SHEETS	SHEET NO.
303	134-N-1	LAKE	62	19
CONTRACT NO. 60L28				

STG21