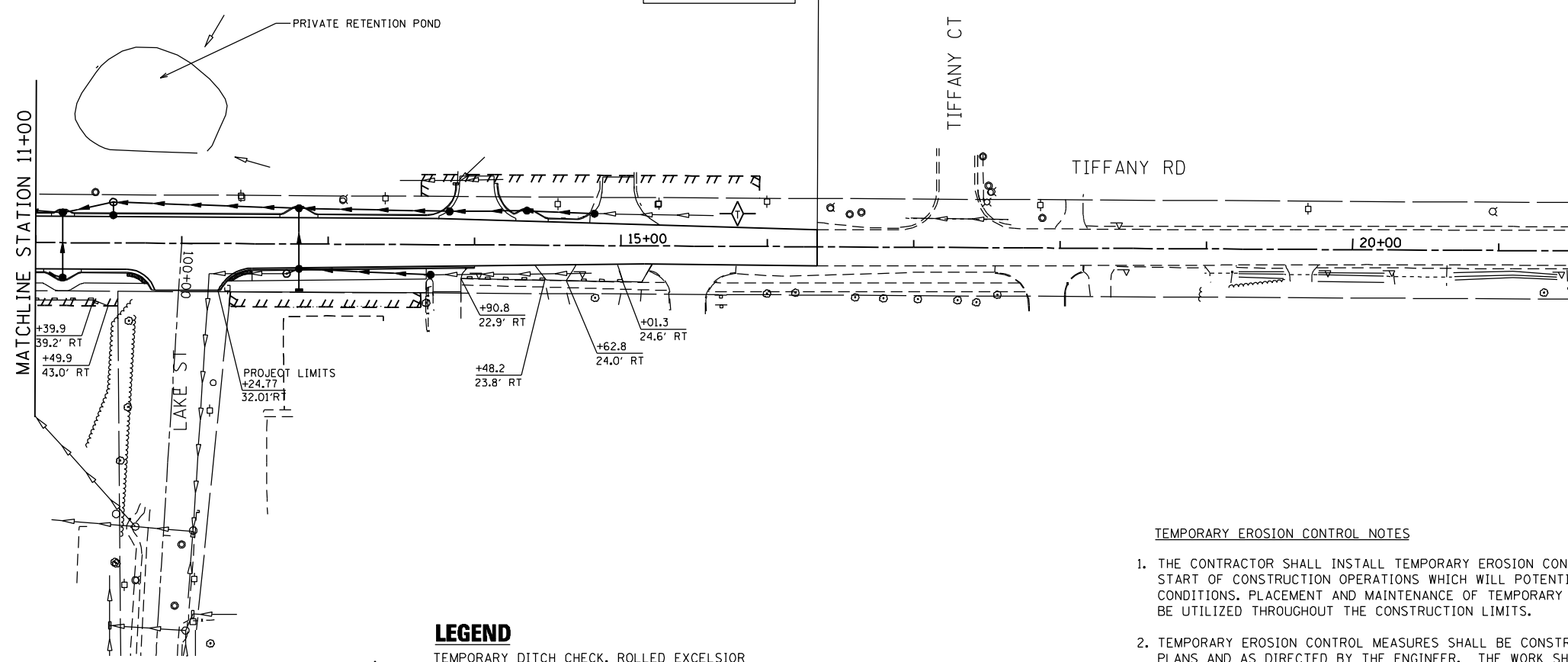





**PROJECT LIMIT  
STA. 16 + 34.00**



**LEGEND**

-  TEMPORARY DITCH CHECK, ROLLED EXCELSIOR SPACED 150' (TYP), UNLESS NOTED OTHERWISE ON THE PLANS (SEE STD 280001)
-  PERIMETER EROSION BARRIER (SEE STD 280001)
-  INLET AND PIPE PROTECTION (SEE NOTE 7)

TEMPORARY EROSION CONTROL NOTES

1. THE CONTRACTOR SHALL INSTALL TEMPORARY EROSION CONTROL MEASURES PRIOR THE START OF CONSTRUCTION OPERATIONS WHICH WILL POTENTIALLY CREATE ERODIBLE CONDITIONS. PLACEMENT AND MAINTENANCE OF TEMPORARY EROSION CONTROL SYSTEMS WILL BE UTILIZED THROUGHOUT THE CONSTRUCTION LIMITS.
2. TEMPORARY EROSION CONTROL MEASURES SHALL BE CONSTRUCTED AS SHOWN ON THE PLANS AND AS DIRECTED BY THE ENGINEER. THE WORK SHALL BE COMPLETED IN ACCORDANCE WITH SECTION 280-TEMPORARY EROSION CONTROL OF THE STANDARD SPECIFICATIONS, CONTRACT SPECIAL PROVISIONS AND THE STORM WATER POLLUTION PREVENTION PLAN (SWPPP)
3. THE CONTRACTOR SHALL PERFORM ALL WORK AS DIRECTED BY THE ENGINEER AND AS SHOWN IN HIGHWAY STANDARD 280001.
4. WEEKLY SITE INSPECTIONS AND APPROPRIATE MAINTENANCE OF ALL EROSION CONTROL MEASURES/DEVICES SHALL BE CONDUCTED AND DOCUMENTED AT ALL TIMES DURING CONSTRUCTION AND ESPECIALLY PRIOR TO, DURING, AND AFTER RAINFALL 0.5 INCHES OR GREATER IN A 24 HOUR PERIOD, OR EQUIVALENT SNOWFALL. THE CONTRACTOR SHALL IMMEDIATELY PLACE AND MAINTAIN TEMPORARY EROSION CONTROL SEEDING AT ALL ERODIBLE/BARE AREAS IN ACCORDANCE WITH SECTION 280 OF THE STANDARD SPECIFICATIONS.
5. THE CONTRACTOR SHALL PLACE PERIMETER EROSION BARRIER AROUND ALL EARTH STOCKPILES.
6. EROSION CONTROL MEASURES PLACED DURING STAGE 1 AND STAGE 2 SHALL REMAIN IN PLACE AND MAINTAINED UNTIL NO LONGER REQUIRED.
7. INLET FILTERS SHALL BE PLACED AT ALL INLETS WITHIN PROJECT LIMITS DURING CONSTRUCTION.
8. THE CONTRACTOR SHALL PREPARE DEWATERING PLANS TO BE REVIEWED AND ACCEPTED BY IDOT'S RE PRIOR TO CONTRACTOR CONDUCTING ANY DEWATERING WORK. LACK OF AN ACCEPTED PLAN OR FAILURE TO COMPLY WITH IT WILL RESULT IN AN ESC DEFICIENCY DEDUCTION.
9. THE CONTRACTOR SHALL PREPARE A PLAN FOR MAINTAINING A STABILIZED FLOW LINE DURING STORM SEWER COSTRUCTION, TO BE REVIEWED AND ACCEPTED BY IDOT'S RE PRIOR TO CONTRACTOR CONDUCTING ANY STORM WORK. LACK OF AN ACCEPTED PLAN OR FAILURE TO COMPLY WITH IT WILL RESULT IN AN ESC DEFICIENCY DEDUCTION.

FILE NAME : P:\2011\ME11007\_VerVar-Phl\CADD\W003\_IL173.et.Tiff\_Rd\Shs\DI60L28-sht-eros.Tiff.dgn  
 USER : ME110000  
 MILLENNIA PROFESSIONAL SERVICES



200 22ND Street, Suite 216, Lombard, IL 60148  
 630.705.0110 voice, 630.839.3566 fax  
 www.mps-il.com  
**MILLENNIA PROFESSIONAL SERVICES**

DESIGNED -	CJD	REVISED -	
DRAWN -	CJD	REVISED -	
CHECKED -	TVN	REVISED -	
DATE -	2/4/2013	REVISED -	

**STATE OF ILLINOIS  
DEPARTMENT OF TRANSPORTATION**

**IL ROUTE 173  
AT TIFFANY ROAD**  
 SCALE: 1"=50' SHEET NO. 2 OF 2 SHEETS

**EROSION AND SEDIMENT  
CONTROL PLAN  
TIFFANY ROAD**  
 STA. 11+00.00 TO STA. 16+34.00

F.A.P. RTE.	SECTION	COUNTY	TOTAL SHEETS	SHEET NO.
303	134-N-1	LAKE	62	21
FED. ROAD DIST. NO. 1 ILLINOIS FED. AID PROJECT			CONTRACT NO. 60L28	

P:\2011\ME11007\_VerVar-Phl\CADD\W003\_IL173.et.Tiff\_Rd\Shs\DI60L28-sht-eros.Tiff.dgn