

INDEX OF SHEETS

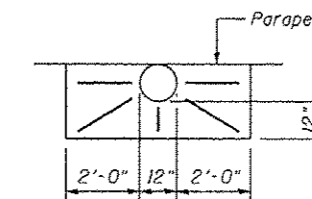
- S1. General Plan and Elevation
- S2. General Notes, Bill of Materials and Index of Sheets
- S3. Stage Construction Details
- S4. Bridge Deck Repair
- S5. East and West Abutment Repairs
- S6. Pier 1 Repairs
- S7. Pier 2 Repairs
- S8. Pier 3 Repairs
- S9. Structural Steel Repairs
- S10. Expansion Joint Repairs
- S11. Expansion Joint Details
- S12. Preformed Joint Strip Seal
- S13. Bar Splicer Assembly and Mechanical Splicer Details
- S14. Bearing Details
- S15. Slope Wall Details

GENERAL NOTES:

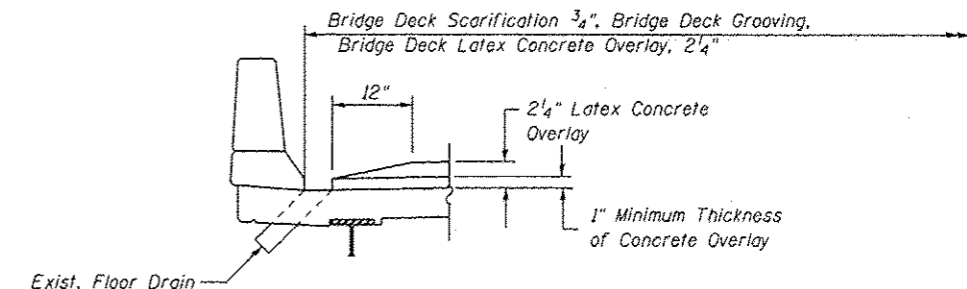
1. Reinforcement bars designated (E) shall be epoxy coated.
2. Plan dimensions and details relative to existing plans are subject to nominal construction variations. The Contractor shall field verify existing dimensions and details affecting new construction and make necessary approved adjustments prior to construction or ordering of materials. Such variations shall not be cause for additional compensation for a change in scope of the work, however, the Contractor will be paid for the quantity actually furnished at the unit price bid for the work.
3. The Contractor shall exercise care during removal of existing joints to ensure that the slab, beams, and diaphragms' integrity will not be detrimentally impacted. The Contractor shall repair any damage(s) to the slab, beams, and diaphragms caused by his operation as directed by the Engineer at no additional cost to the Department.
4. Cost for removal and disposal of existing expansion joints shall be included in the pay item "Concrete Removal."
5. The removal and reattachment of guardrail, hand rail, steel railings, traffic barrier terminal, etc. required for repair work (e.g. transverse joint replacement) shall be included in the contract unit price of the work item being performed.
6. Staged construction shall be utilized to maintain traffic during construction.
7. All structural steel shall conform to AASHTO Classification M-270 Gr. 36, unless otherwise noted.
8. The existing structural steel coating contains lead. The Contractor shall take appropriate precautions to deal with the presence of lead in this project.
9. Existing structural steel that will be in contact with new structural steel shall be cleaned and painted prior to erection as required by the Special Provision "Cleaning and Painting Contact Surface Areas of Existing Steel Structures".
10. All new structural steel shall be shop painted with the inorganic zinc rich primer per AASHTO M300, Type I. Cost included with Structural Steel Repair.
11. Joint openings shall be adjusted according to Article 520.04 of the Std. Specs. when the deck is poured at an ambient temperature other than 50° F.
12. Protective Coat shall be applied to the top and inside faces of the bridge deck parapets and the transverse joint reconstruction areas.
13. Fasteners shall be AASHTO M164 Type I, mechanically galvanized bolts. Bolts 3/4" dia., holes 13/16" dia., unless otherwise noted.

TOTAL BILL OF MATERIAL

| ITEM DESCRIPTION | UNIT | QUANTITY |
|--|---------|----------|
| Bituminous Materials (Prime Coat) | Gallon | 47 |
| Aggregate (Prime Coat) | Ton | 1 |
| Hot-Mix Asphalt Surface Course, Mix "D", N70 | Ton | 39 |
| Protective Coat | Sq. Yd. | 272 |
| Concrete Removal | Cu. Yd. | 20.3 |
| Slope Wall Removal | Sq. Yd. | 452 |
| Protective Shield | Sq. Yd. | 567 |
| Concrete Superstructure | Cu. Yd. | 21.9 |
| Bridge Deck Grooving | Sq. Yd. | 1,030 |
| Furnishing and Erecting Structural Steel | Pound | 1,530 |
| Reinforcement Bars, Epoxy Coated | Pound | 2,240 |
| Bar Splicers | Each | 24 |
| Slope Wall 4" | Sq. Yd. | 452 |
| Preformed Joint Strip Seal | Foot | 116.0 |
| Elastomeric Bearing Assembly, Type II | Each | 12 |
| Anchor Bolts, 1" | Each | 48 |
| Controlled Low Strength Material (CLSM) | Cu. Yd. | 6.0 |
| Type C Inlet Box, Standard 609006 | Each | 1 |
| Type D Inlet Box, Standard 609006 | Each | 1 |
| Inlet Boxes to be Adjusted (Special) | Each | 2 |
| Remove Inlet Box | Each | 2 |
| Approach Slab Repairs (Full Depth) | Sq. Yd. | 1 |
| Approach Slab Repairs (Partial Depth) | Sq. Yd. | 3 |
| Jack and Remove Existing Bearings | Each | 12 |
| Structural Steel Repair | Pound | 430 |
| Bridge Deck Latex Concrete Overlay, 2 1/4" | Sq. Yd. | 1,063 |
| Bridge Deck Scarification, 3/4" | Sq. Yd. | 1,063 |
| Structural Repair of Concrete (Depth Equal to or Less Than 5") | Sq. Ft. | 294 |
| Structural Repair of Concrete (Depth Greater Than 5") | Sq. Ft. | 28 |
| Temporary Shoring and Cribbing | Each | 2 |
| Porous Granular Embankment | Cu. Yd. | 20 |
| Protection and Maintenance of Underpass Luminaires | L. Sum | 1 |
| Clean Bridge Scuppers and Downspouts | Each | 9 |



PLAN-DETAIL OF CONCRETE OVERLAY AT SCUPPER



CONCRETE OVERLAY AT FLOOR DRAIN