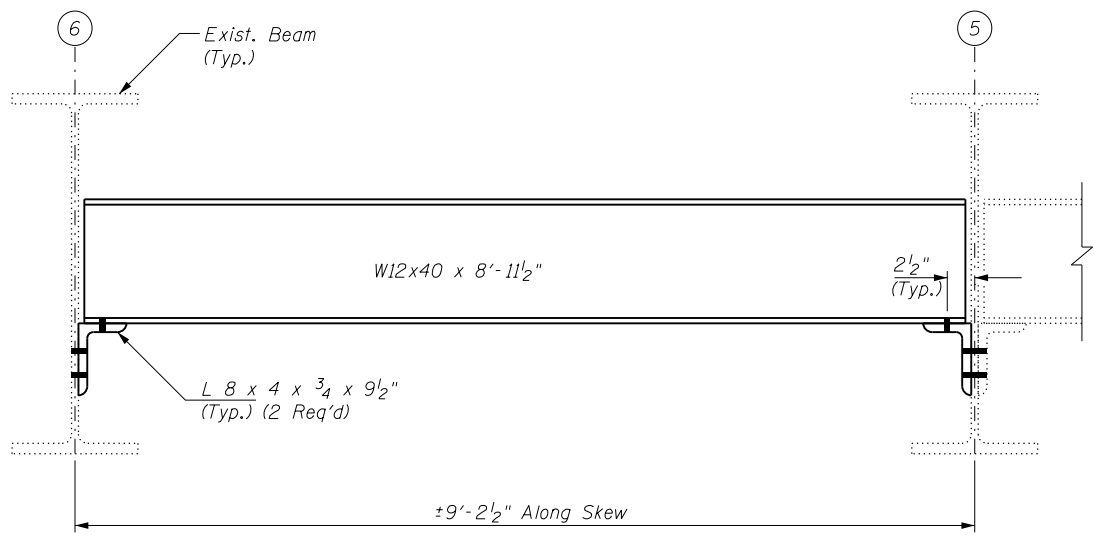
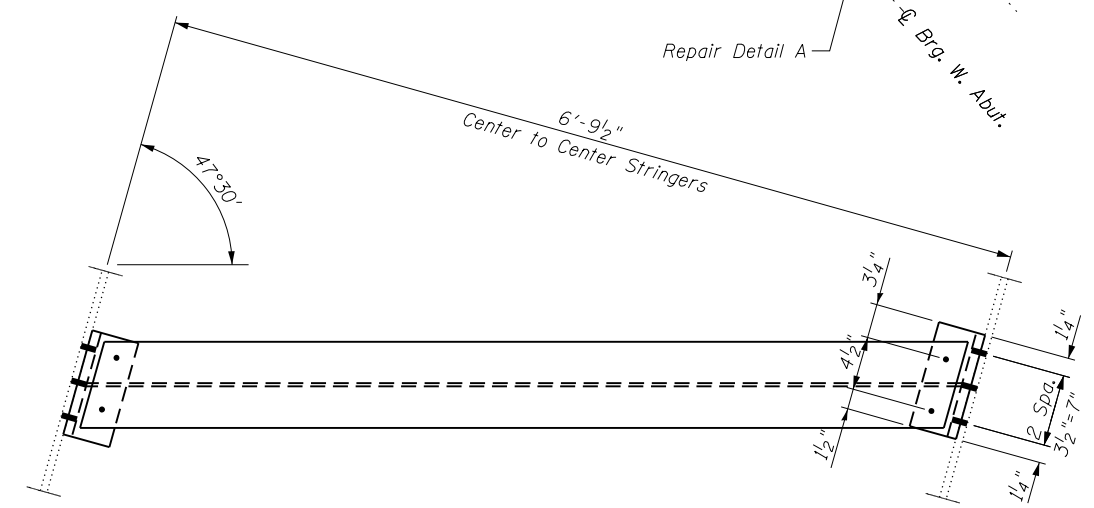
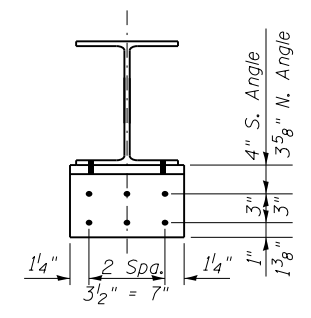


FRAMING PLAN



REPAIR DETAIL A



Note:
Prior to ordering any material, the Contractor shall verify in the field all existing bolt hole dimensions in existing beam.

BILL OF MATERIAL

ITEM	UNIT	QUANTITY
Structural Steel Repair	Pound	430

Notes:

- Field drill holes in new diaphragms.
- Cost of removal and disposal of existing diaphragms shall be included with Structural Steel Repair.
- Lighting conduits are located along each abutment. The Contractor is responsible for protection, support, re-hanging, etc. of all conduits for the duration of the project. Cost included in the pay item "Protection and Maintenance of Existing Underpass Luminaires." The Contractor will be required to repair any damage done to the conduit to the satisfaction of the Engineer. No splicing will be allowed to any cable damage resulting from this work, instead the Contractor will be required to repair the entire span of any damaged cable at no additional cost to the Department.