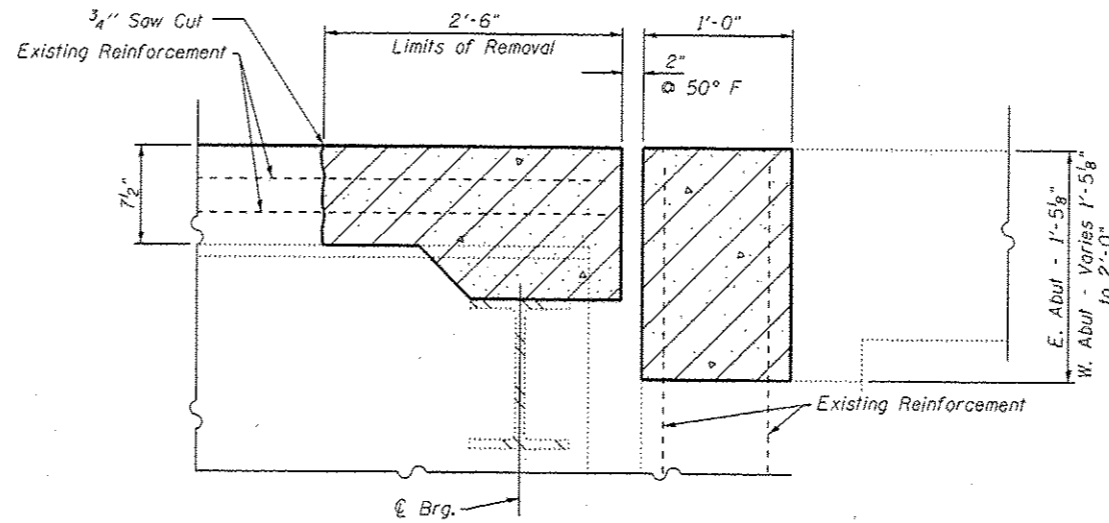
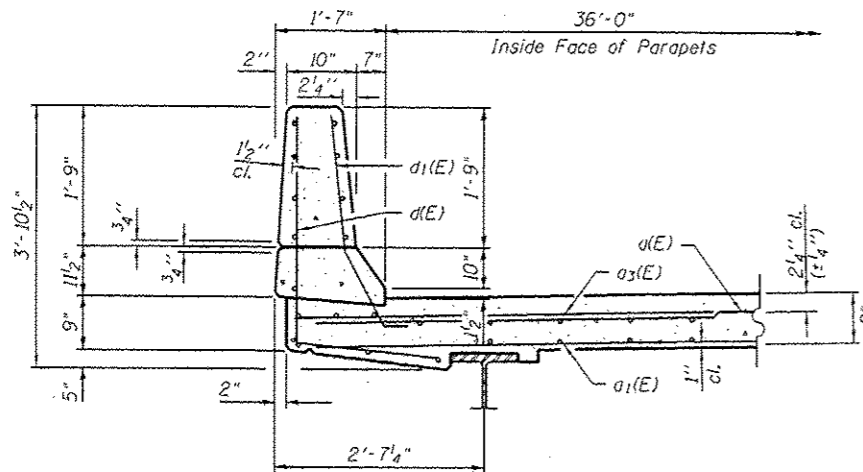


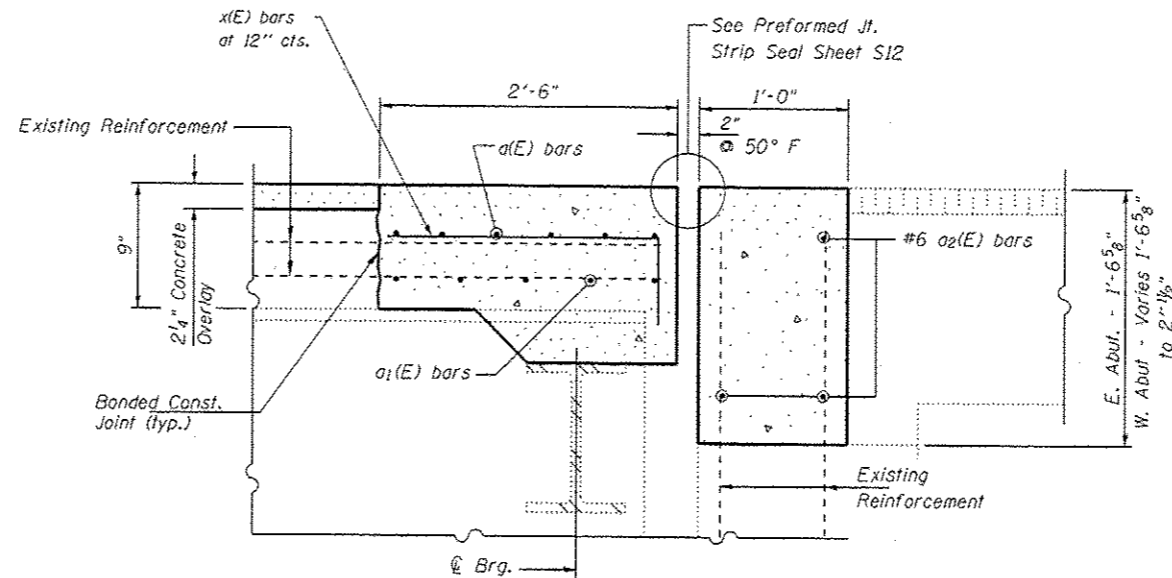
SECTION A-A



SECTION B-B



SECTION C-C



SECTION D-D

Notes:

1. Existing reinforcement bars extending into the concrete removal area shall be cleaned straightened and incorporated into the new construction. Any reinforcement bars damaged during concrete removal shall be replaced with an approved bar splicer or anchorage system. Cost included with Concrete Removal.
2. Existing reinforcement bars in the concrete removal area parallel to the expansion joints shall be removed.
3. Removal and disposal of the existing expansion joints will not be paid for separately, but shall be included with the cost of Concrete Removal.
4. If existing name plate falls within the limits of Concrete Removal, it shall be removed and reinstalled in its original location in accordance with IDOT Std. 515001. Cost included with Concrete Removal.
5. The Contractor shall exercise extreme care with the existing conduits in sections of the parapet to be removed and to protect and support the conduit. The Contractor will be required to repair any damage done to the conduit to the satisfaction of the Engineer. No splicing will be allowed to any cable damage resulting from this work, instead the Contractor will be required to repair the entire span of any damaged cable at no additional cost to the Department.
6. Work this sheet with Sheets S10, S12, & S13.

FILE NAME *	USER NAME *	DESIGNED - JMS	REVISED -	STATE OF ILLINOIS DEPARTMENT OF TRANSPORTATION	EXPANSION JOINT DETAILS STRUCTURE NO. 022-0090	F.A.U. RTE.	SECTION	COUNTY	TOTAL SHEETS	SHEET NO.	
		CHECKED - JMH	REVISED -			290	22-3HB-1	DUPAGE	37	26	
		DRAWN - DR	REVISED -			CONTRACT NO. 60M97					
		CHECKED - JMH	REVISED -			SHEET NO. S11 OF S15 SHEETS					
						[ILLINOIS] FED. AID PROJECT					