

F.A.I. RTE.	SECTION	COUNTY	TOTAL SHEETS	SHEET NO.
290	2010-156-RS	DUPAGE	16	1
		ILLINOIS	CONTRACT NO. 60N68	

STATE OF ILLINOIS
DEPARTMENT OF TRANSPORTATION

DIVISION OF HIGHWAYS

**PROPOSED
HIGHWAY PLANS**

F.A.I. ROUTE 290: I-290 FRONTAGE RD. (LAKE ST.)
MICHIGAN ST. TO 0.6 MI. E. OF EMROY AVE.
SECTION: 2010-156-RS
RESURFACING (3P)
DUPAGE COUNTY

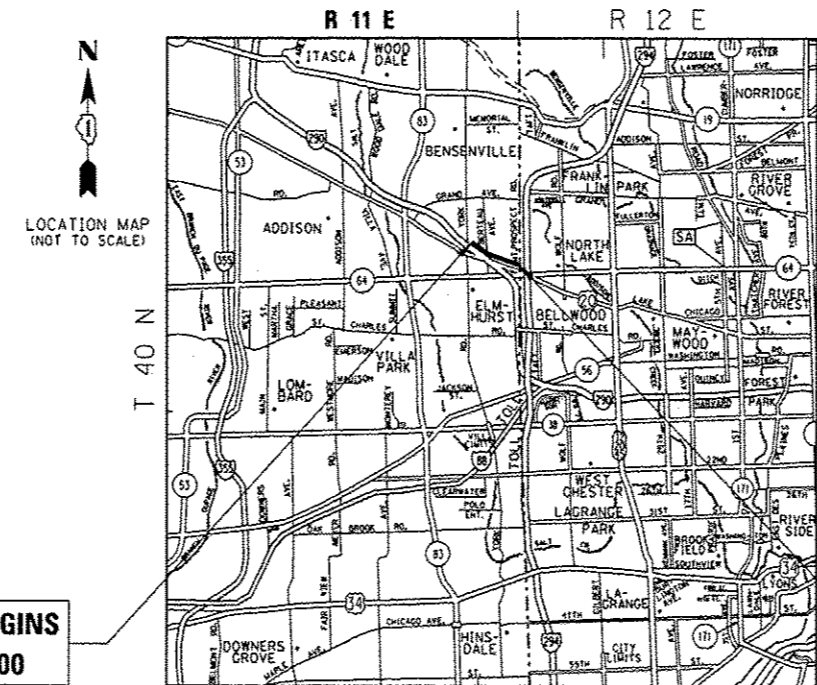
FOR INDEX OF SHEETS, SEE SHEET NO. 2

THIS PROJECT IS LOCATED
IN CITY OF ELMHURST

D-91-338-11



C-91-338-11



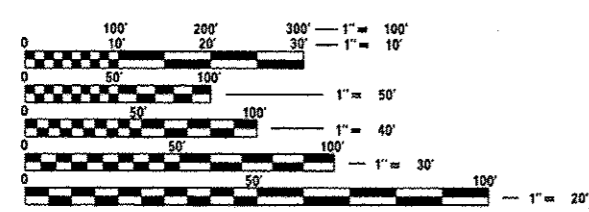
PROJECT BEGINS
STA. 10 + 00

PROJECT ENDS
STA. 66 + 46

OMISSION AT EMROY AVE.
STA. 34 + 94 TO STA. 36 + 35

ADDISON TOWNSHIP DUPAGE CO. LEYDEN TWP. COOK CO.

TRAFFIC DATA:
2005 ADT = 13300
SPEED LIMIT MICHIGAN ST. TO EMROY AVE. = 25 MPH
SPEED LIMIT EMROY AVE. TO 0.6 MI. E. OF EMROY AVE. = 35 MPH



FULL SIZE PLANS HAVE BEEN PREPARED USING STANDARD ENGINEERING SCALES. REDUCED SIZED PLANS WILL NOT CONFORM TO STANDARD SCALES. IN MAKING MEASUREMENTS ON REDUCED PLANS, THE ABOVE SCALES MAY BE USED.

J.U.L.I.E.
JOINT UTILITY LOCATION INFORMATION FOR EXCAVATION
1-800-892-0123
OR 811

PROJECT ENGINEER: DAN WILGREEN / (847) 705-4240
PROJECT MANAGER: KEN ENG / (847) 705-4247

CONTRACT NO. 60N68

GROSS LENGTH = 5646 FT. = 1.07 MILES
NET LENGTH = 5505 FT. = 1.04 MILES

STATE OF ILLINOIS
DEPARTMENT OF TRANSPORTATION
DIVISION OF HIGHWAYS

SUBMITTED *December 12 2012*

John Fortman
DEPUTY DIRECTOR OF HIGHWAYS, REGION ENGINEER

May 10 2013
John D. Baramelli
actg. ENGINEER OF DESIGN AND ENVIRONMENT

May 10 2013
Osman Osman
DIRECTOR OF HIGHWAYS, CHIEF ENGINEER

PRINTED BY THE AUTHORITY
OF THE STATE OF ILLINOIS