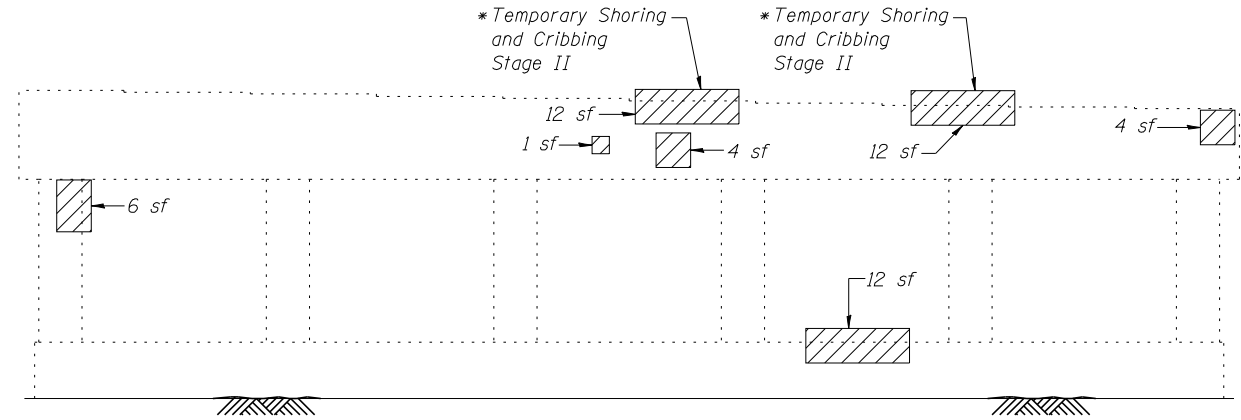
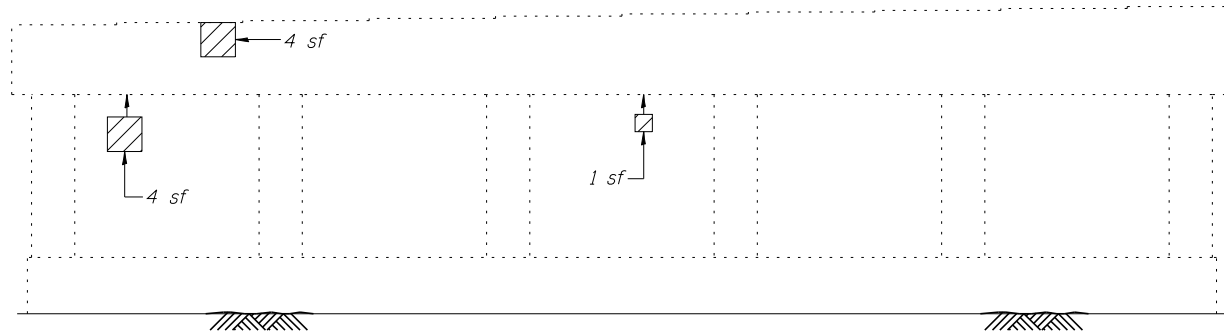


PIER 1
(Looking North)

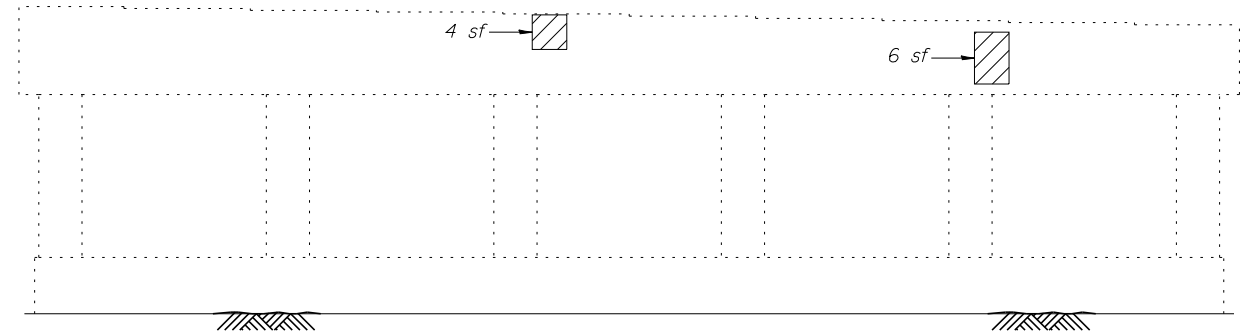
* Repair required underneath bearing. This work shall be performed prior to deck repairs. Once the concrete has attained the required strength and the curing period is complete, the new bearing shall be installed and the cribbing shall be removed.



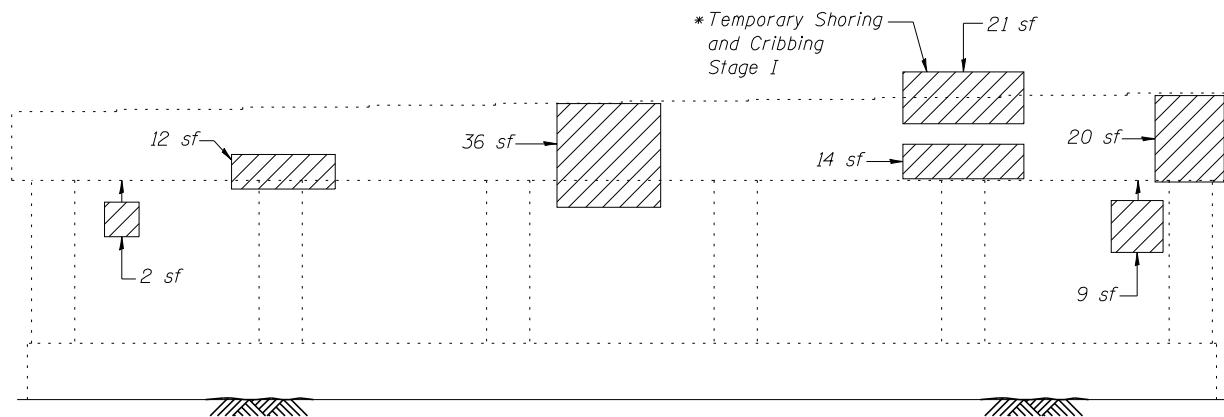
PIER 1
(Looking South)



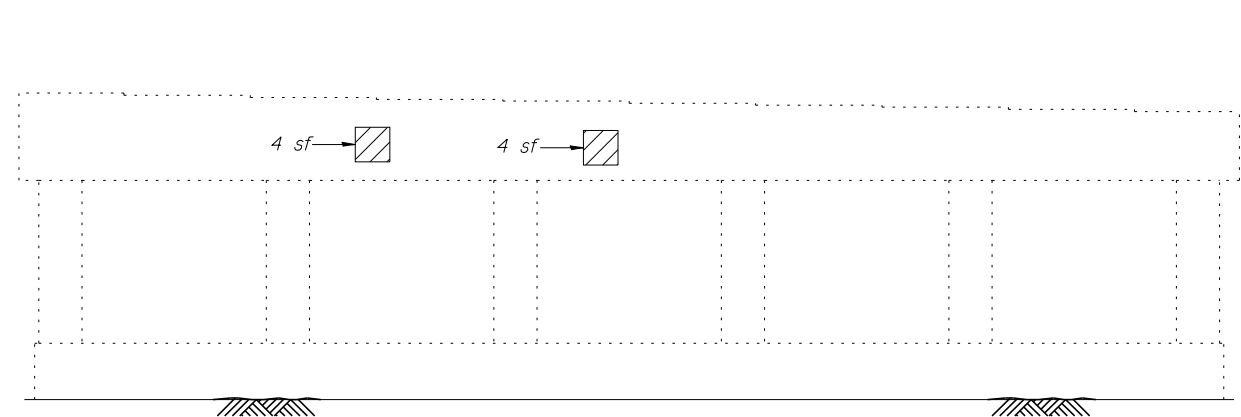
PIER 2
(Looking North)



PIER 2
(Looking South)



PIER 3
(Looking North)



PIER 3
(Looking South)

LEGEND

Structural Repair of Concrete
(Depth Equal to or Less Than 5 Inches)

sf Square Feet

Note:

Repair of the existing piers shall include but may not be limited to the areas shown. The actual areas to be repaired will be determined by the Engineer at the time of construction.

PIERS 1 & 3 BEAM REACTIONS

(From Spans 2 & 3)

Dead Load = 41 k
LL+Imp = 76 k
Total = 117 k
Min. Jack Capacity = 60 tons

BILL OF MATERIAL

Item	Unit	Total
Structural Repair of Concrete (Depth Equal to or Less Than 5 Inches)	Sq. Ft.	259
Temporary Shoring and Cribbing	Each	3